



# Optimum Glazing Configurations for Visual Performance in Algerian Classrooms under Mediterranean Climate

Mesloub Abdelhakim,<sup>\*a</sup> Yaik-Wah Lim,<sup>a,b</sup> Mohd Zin Kandar<sup>a</sup>

<sup>a</sup>Faculty of Built Environment and Surveying, Universiti Teknologi Malaysia (UTM), Johor, Malaysia

<sup>b</sup>Centre for the Study of Built Environment in the Malay World (KALAM), Institute for Smart Infrastructures and Innovative Construction, UTM, Johor, Malaysia

## Article info

### Article history:

Received 4 February 2019

Revised 20 March 2019

Accepted 27 March 2019

Published online 10 April 2019

### Keywords:

Daylighting

Bilateral lighting

Glazing

Useful daylight illuminance

## Abstract

Daylight quality and quantity in Algerian schools show serious problems in ensuring visual comfort of students and teachers. Some problems are due to window design, which leads to excessive amount of sunlight penetration into the classrooms. The consequences are glare and heat gain. This study investigates the effective glazing pattern for classroom to achieve optimum daylight performance and visual comfort in Algerian classrooms. Field measurements of typical classrooms were carried out in a selected school in Algeria during solstice summer (under clear sky condition) and solstice winter (under overcast sky condition). The data of outdoor daylight illuminance were used to validate Integrated Environment Solution Virtual Environment (IESVE) daylight simulation. This study used three different glazing types, namely, clear, tint and reflective glass with different glazing proportions, subsequently, seven patterns of glazing window design were used for an extensive simulation exercise. The results of the investigation from the site measurements show that the work plane illuminance was found to be beyond the range of 300 lux to 500 lux, which exceeded recommended value, except for the south-east orientation with clerestory typology, which were recorded at 2.98% of daylight factor, in contrast the daylight uniformity in tested classrooms is appropriate. Furthermore, the simulation revealed that combination of 75% clear glass and 25% reflective glass with 30% wall-to-window ratio has achieved 41.41% during winter and 47.82% during summer of Useful daylight illuminance. The use of different glazing configurations shows a significant improvement on daylight distribution and the reduction of glare comparing to the reference model. However, such improvement in the quality and quantity of daylighting was inadequate which arises the need of further enhancement.

© 2019 The Author(s). Published by solarlits.com. This is an open access article under the CC BY license (<http://creativecommons.org/licenses/by/4.0/>).

## 1. Introduction

The study of the comfort in architecture, building conditions, and environmental needs of the society has become paramount [1]. This arises the need of proper environmental monitoring and in-depth analysis of building performance that influence societal wellbeing. The current state of schools in Algeria is such that there is an urgent need for building new schools to meet the needs of increasing school standards in accordance with the times. However, few of these schools meet the minimum norms based on design criteria for conducive learning thus there is a need for urgent improvements to remedy the many problems constantly suffered by school children. These problems are caused by poor visual environmental for learning conditions through a large

amount of daylight penetration inside the classroom that causes glare and non-uniform daylight [2].

Visual comfort is the main determinant of lighting requirements. Good lighting will provide a suitable intensity and direction of illumination on the task area, appropriate colour rendering, and the absence of discomfort [3]. In addition, it provides a satisfying variety of lighting quality and intensity [4]. Hence, the relationship between lighting levels and visual comfort is generally strong, in order to achieve high visual performance [5]. The activities carried out by students in the classroom differ, therefore, the lighting condition in the classroom should suit the activities practiced by the students [6].

The performance of daylight in classrooms requires many daylight metrics for assessment. The illuminance-based metric is commonly used to measure daylight provision [7]. Thus, it can be defined as the amount of light reaching the surface or at a specific point in a work plane within a specific point in time, normally

\*Corresponding author.

[h.mesloub@yahoo.com](mailto:h.mesloub@yahoo.com) (M. Abdelhakim)

[lywah@utm.my](mailto:lywah@utm.my) (Y.-W. Lim)

[mzin@utm.my](mailto:mzin@utm.my) (M. Z. Kandar)

expressed in lux ( $\text{lm}/\text{m}^2$ ) [8]. The average daylight factor (DF) represents the architectural quality of buildings and is one of the most widely used simulation outputs. The DF is a common method that determines the availability of daylight in a room [9,10]. The DF is expressed as a percentage and is defined as the ratio of interior illuminance on a horizontal surface  $E(\text{int})$  to the exterior illuminance on a horizontal surface  $E(\text{ext})$  under standard CIE overcast sky conditions,

By definition, DF should be calculated only under the CIE overcast sky condition. This is critical for the understanding of the final simulation results. In contrast, The Sunlight illuminance ratio (SIR) is the interior illumination on a horizontal surface over the exterior illumination on a horizontal surface in a clear sky condition [11]. Furthermore, a far more realistic account regarding true daylighting conditions is provided by dynamic daylight metrics when compared with the highly idealised DF method. Reinhart & Wienold in (2011) had written a review on the recent dynamic daylight metric advances (climate-based), and remarked that the most commonly used approach was Useful Daylight Illuminance (UDI) [12,13].

UDI is regarded to be a complex metric and provides more information regarding to the situation of space. Meanwhile, it is appropriate for assessing the daylighting quality of architectural spaces [14]. In addition, it is a correlation with glare probability, which had seemed to be sufficiently robust [15]. UDI is defined as the fraction of the time in a year when the indoor horizontal daylight illuminance at a given point falls within a given range [16]; it provides lower and upper threshold, which varies across different researchers depending on their interpretation and the purpose of study. Thus, should the daylight illuminance be very low (i.e. below a minimum), it may not be helpful for visual task as well as the perception around the visual environment. As opposed to this, should the daylight illuminance be excessively high (i.e. above a maximum), it may offer visual and thermal discomfort. UDI referred here are those that fall within the range of maximum and minimum thresholds [17]. At present, UDI does not have internationally agreed design values. In fact, their recent introduction has not allowed sufficient experimental activity to be carried out to correlate their values with the response of occupants in schools [18]; therefore, the useful Daylight thresholds used in this study is based on international standard (AFE) of illuminance task in classrooms. The UDI scheme is applied by determining the occurrences of daylight illuminances that:

- Are within the range defined as useful (i.e. 300-500 lux)
- Fall short of the useful range (i.e. less than 300 lux)
- Exceed the useful range (i.e. greater than 500 lux).

To achieve the desired daylight and view in any building design, prompt attention is given to the building orientation, position of windows, size of windows and glazing type [19]. Modern window design transcends beyond provision of simple windows with visible transmittance into more complex division [20]. The first division handles daylight glazing by deflecting direct light beams incident into the building through light shelves, reflective blinds, or other reflective surfaces. These glazing are placed high in the wall or ceiling. The second division glazing is at the lower part of the wall level for occupants of the space to enjoy the outdoor view. These divisions can be improved by addition of glazing to mitigate glare and solar heat gain [21,22]. The vast amount of glazing types in the market affords the architect multiple options in

specifications for window glazing. The factors for the specifications includes window orientation, thermal and acoustic characteristics, main functions of the window in introduction of daylight and provision of adequate views to the occupants [23]; however, this study focuses on the available glazing in the Algerian construction market and the frequency of usage within the school construction typologies [6].

Several studies on the quality and quantity of daylighting have been conducted to provide the needed visual comfort for learners in school buildings [24-27]. This is hinged on several factors such as student performance [28,29]; and appropriate design through different approach such as shading devices [30,31]; windows design that allow the use of natural sun light for illuminating the classrooms [32,33]. However, only few research focus on optimization of daylighting quantity and quality through glazing configurations of bilateral and clerestory window typology, therefore, this research aims (1) to generate significant information to serve as a platform for daylighting requirements for classroom building design, and (2) to determines the optimum glazing pattern to maximise daylight, and occupant comfort.

## 2. Methods and materials

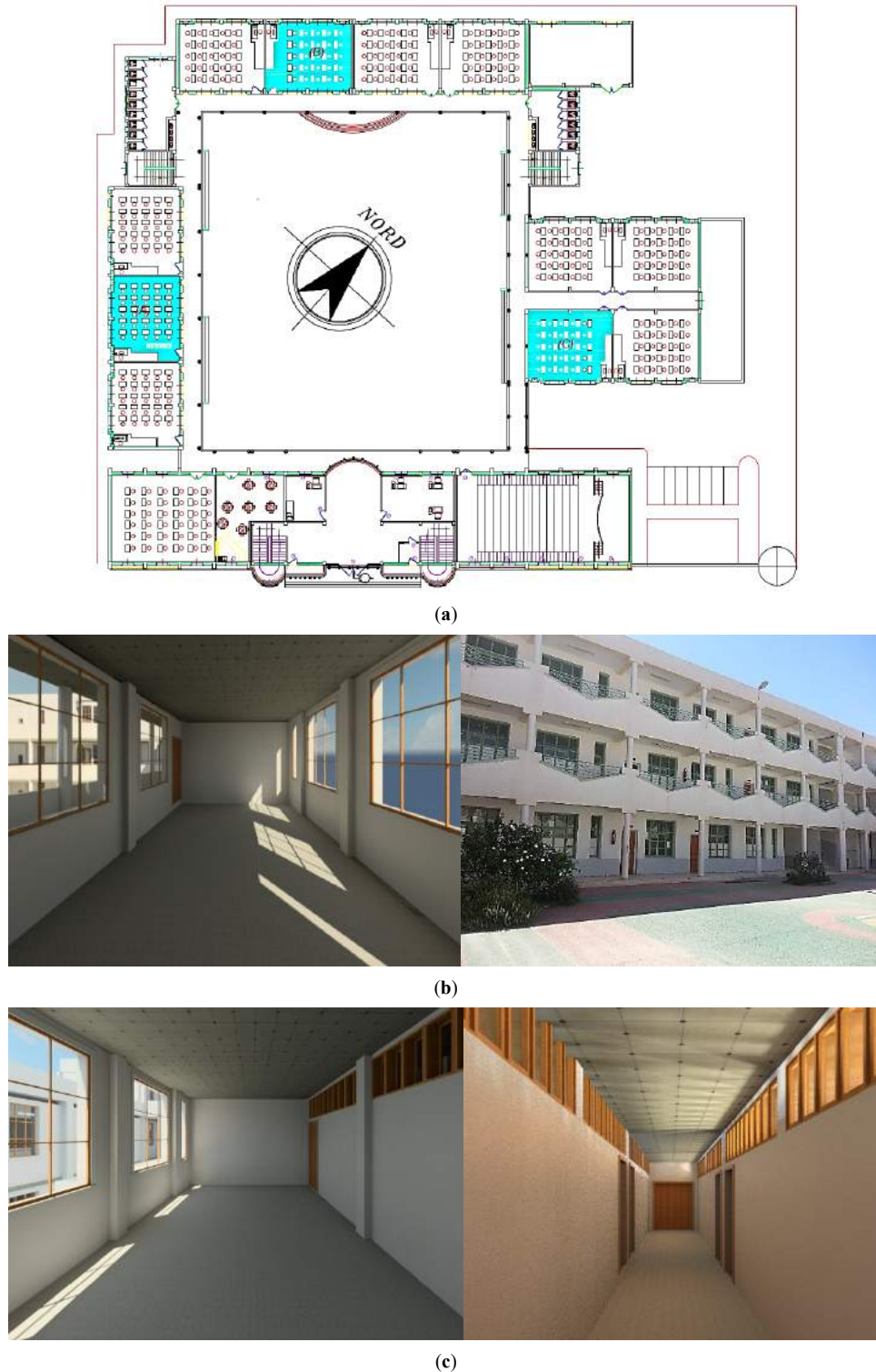
The methodology used in this study is a combination of two methods. The first is site visit and experimental measurement in a selected Algerian school as case study, followed by computer daylight simulation experiments using work plan illuminance, DF and dynamic daylighting illuminance metrics through Integrated Environment Solution Virtual Environment (IESVE) software. A typical classroom, which was derived from a typical Algerian public school, was modeled for a simulation exercise. The measurements of illuminance levels and DF were performed by using three light meters (HOBO Pendant Temperature/Light Data Logger), as shown in Fig. 1, in critical periods (summer and winter season).

### 2.1. Experiment setting

The schools chosen for conducting this experiment are located in Algeria, where the Mediterranean climate is characterized by cold winters as well as hot and dry summers. Extreme temperatures range from 1.7C in January that is considered the coldest month to



Fig. 1. Data-logger and three light meters used in the experiment.



**Fig. 2.** (a) The location and orientations of classrooms tested, (b) bilateral typology with overhang, and (c) clerestory typology without overhang.

34.5C in July, which is the warmest month in the year. This experiment conducted for two typologies: (1) a linear configuration with simple distribution (Bilateral lighting mode), and the linear configuration with double distribution (clerestory lighting mode), which are representing the common school's typology. The classrooms are usually occupied from 8:00 h. to 11:00 h. in the morning and from 13:00 h. to 17:00 h. in the afternoon, illuminated on two opposite sides (bilateral clerestory

lighting) through a window size of 30% wall-to-window ratio (WWR). The external facades of three tested classrooms facing to north, south, and west orientations, as shown in the Fig. 2. Referring to the type of glass used in this school, the predominantly used in most schools is single clear glass 3mm with U-value of 5.25 W/m<sup>2</sup>K, and visible transmittance 92%.

Series of daylighting measurements were performed both inside and outside of the classrooms in order to measure the illuminance.

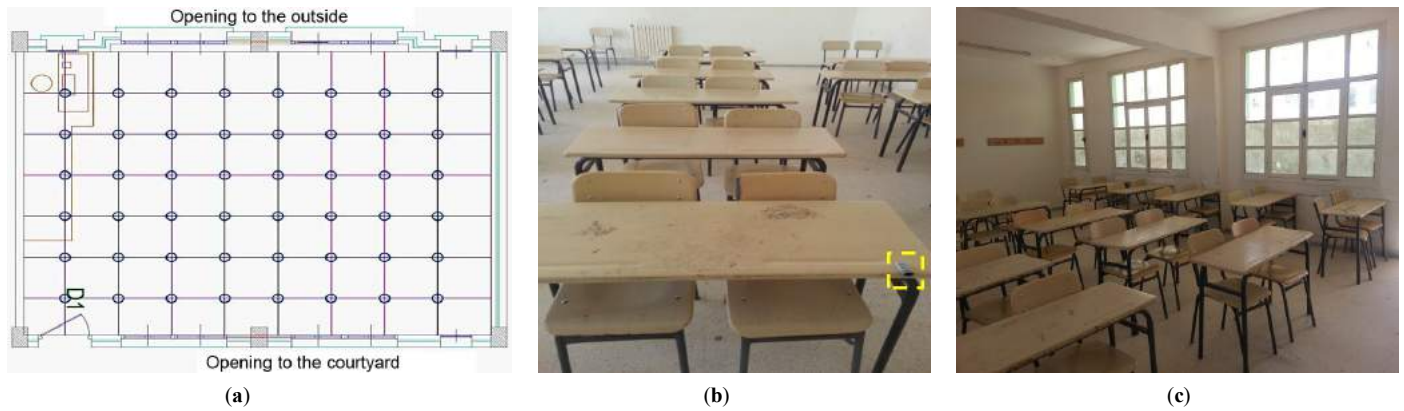


Fig. 3. (a) Grids of measurements, (b) arrangement for the experiment within classroom, and (c) visible coating of window.

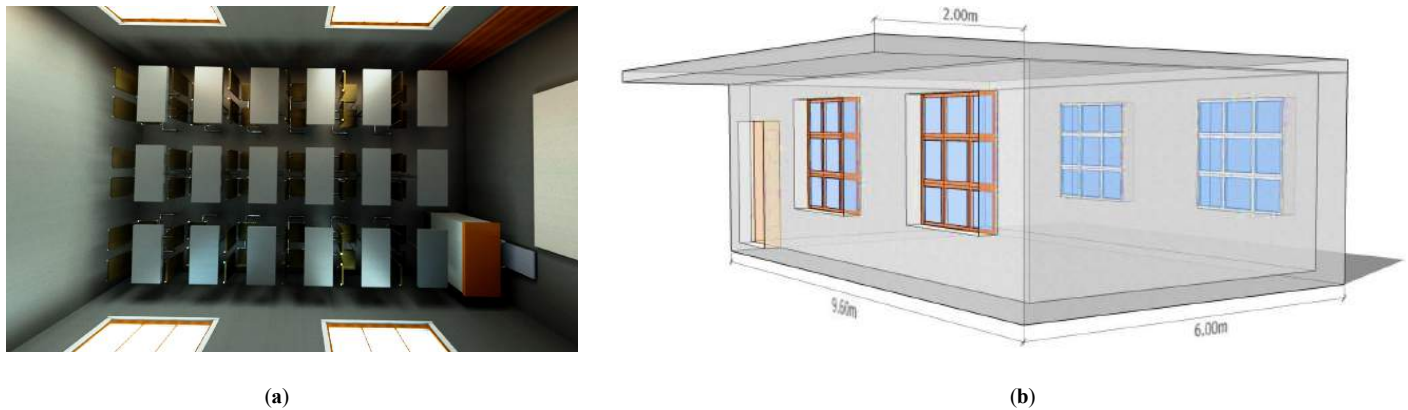


Fig. 4. (a) and (b) Geometric 3D Model typology of Typical Classroom (bilateral lighting mode) used in simulation.

Outside the classroom, an external sensor was placed for each measurement, thus obtaining the external illuminance ( $E_e$ ) for each analysis while measuring work plane illuminance (WPI) inside the classroom ( $E_i$ ) by a number of grid points depend on the position of each classroom at work plane height of 75cm above floor. These measurements were performed within a critical period in summer (22 July) and winter season (22 December), at 9:00 h. in the morning and 14:00 h. in the afternoon. The choice of measurement points (grids) inside the classrooms followed the grids plotted according to the (disposition) arrangement of work planes (tables) and side openings [34] (Fig. 3). The minimum number of points in the prototype classroom in Algeria was 48 points. For accurate results, the distances between measurement point grids were made to be 1 m [34]. It is important to remember that the goal of this part of the research was too evaluate the daylight quantity thus student attendance was not necessary.

After completing these measurements, the internal WPI values were transcribed into a tabular form which contains the average illumination of each column, the overall average illuminance of the classroom, and the uniformity index ( $I_u$ ) of interior daylight; which is the the ratio between the minimum illumination to the maximum illumination should be no less than 0.5 above the WorkPlane based on NBN L13-001 code and international guideline [35]. All these variables were calculated by using Microsoft Excel. For quantitative analysis, we conducted a comparison of the resulting values of measurements with lighting standard recommendations [36].

## 2.2. Empirical validation of Radiance-IES through field measurement

The tools of daylighting simulation have been increasingly applied to determine daylight conditions in many studies. Most of these tools employ CIE sky models for simulation. Nevertheless, the applicability and accuracy of these tools for a typical Algerian climatic condition need validation as the climatic conditions varies with the software coming from other countries that are not in same climatic region as that of Algeria, which is a Mediterranean climate. This study validated IESVE software result with outdoor illuminance measured under real sky conditions. All measurements were conducted in Algeria under clear and overcast sky conditions and outdoor illuminance data extracted from the middle of each month (October, November, and December in winter, and July in summer) were compared with IESVE values. Means Bias Error (MBE) and coefficient of determination used for validation.

## 2.3. Simulation procedure

### 2.3.1. Location, orientation, surrounding and sky condition

Algeria is located at 36.4°N 3.02°E and possesses an average elevation of 186 meters. The location provides lots of daylight throughout the year due to its latitude and longitude coordinates. Therefore, it is preferable to utilise daylight in the buildings during daylight hours, which is available in abundance and free. The daylight performances can be affected by the surrounding environment of the site [37]. However, in this research, the reflection from the surrounding environment was ignored. In

**Table 1.** Glazing configuration size and position used in simulation

Orientation and Time	Glazing type	Glazing size simulations			
		S1	S2	S3	S4
No panel	-	S1	S2	S3	S4
North-South At 9:00 h. and 14:00 h.	Clear glass (G1)	100%			
	Clear glass (G1)+	25%	50%	75%	25%
	Tint glass (G2)	75%	50%	25%	75%
	Clear glass (G1) +	25%	50%	75%	25%
	Reflection glass (G3)	75%	50%	25%	75%
North-South At 9:00 h. and 14:00 h.	Clear glass (G1)	100%			
	Clear glass (G1)+	25%	50%	75%	25%
	Tint glass (G2)	75%	50%	25%	75%
	Clear glass (G1) +	25%	50%	75%	25%
	Reflection glass (G3)	75%	50%	25%	75%
<b>Configurations of glazing</b>					
Pattern 1 Clear glass 100%	Pattern A1 Tint glass 75% Clear glass 25%	Pattern A2 Tint glass 50% Clear glass 50%		Pattern A3 Tint glass 25% Clear glass 75%	
	Pattern B1 Reflective glass 75% Clear glass 25%	Pattern B2 Reflective glass 50% Clear glass 50%		Pattern B3 Reflective glass 25% Clear glass 75%	

**Table 2.** Summary of Performance Indicator Criteria for Daylight Simulation Experiment (AFE, PROMOTELEC).

Analysis	Criteria	Performance Indicator
Quantitative and qualitative	DF	<1% - Dark area, 1-2% - Fair area, 2-4% - Good area, 4-7% - Too bright area, > 7% - Too bright with thermal discomfort
	WPI	Recommended WPI 300-500 lux
	UDI	Fall short and need artificial lighting <300 lux Within the range of UDI (300 lux to 500 lux) Exceed the UDI value 500 lux
	Uniformity of daylight	The ratio of minimum to maximum illumination must be greater than 0.5

Algeria, as in most European countries, the fully overcast sky has been selected as standard design sky to which DF is employed in daylighting design as it represents minimum daylight condition. However, the overcast sky is representing the least favorable lighting condition in many regions [38]. Weather stations provide indices of total cloudiness (duration of sunshine (hours) and global solar radiation in (Wh/m<sup>2</sup>), but they do not measure illuminances. For this reason the various existing global daylight availability across the country have not been defined on the basis of actual measurements.

### 2.3.2. Basic Geometric Model

The geometry of the classrooms is determined by the Algerian Guideline of Schools Buildings (Classification Techicums of Local and Functional Standards). The classroom area for 36 students was defined for this study as 57.6 m<sup>2</sup>, measuring 9.6 m long and 6.0 m wide in addition to a covered corridor for students up to 2.0 m wide, which is considered an overhang with bilateral lighting mode (Fig. 4). The finishing materials of the classroom were selected among the materials that are generally used in Algerian public schools:

- Floor: stone coverings, reflection coefficient 25%
- Walls: cream paint reflection coefficient 70%
- Ceiling: white paint, reflection coefficient 80%

- Ground coverings: concrete, reflection coefficient 30%

It is assumed that there is no building in the vicinity that could obstruct direct light from entering the windows.

### 2.3.3. Windows properties

The design considerations for windows in classrooms require examining climate and solar conditions which are affected by the location and building type. Therefore, several design variables can strongly influence the impact of windows on visual performance and the learning environment. The daylighting system adopted in Algerian public schools is bilateral lighting which means the openings exist on two perpendicular walls. Therefore, the opening of the windows will be designed on both walls; square shaped windows are commonly and widely used in Algerian public schools. Window sizes were modelled with a fenestration inclusive of window frame with WWR of 30% as constant, in accordance with Algerian guideline recommendations.

### 2.3.4. Glazing configurations

Table 1 shows the glazing configurations applied for this study (simulation), ratios of glazing type used were: 25%, 50%, 75%, and 100%. To balance daylight admission with glare and solar heat gain control as well as providing uniform light distribution, modern daylight design suggests that glazing is separated into

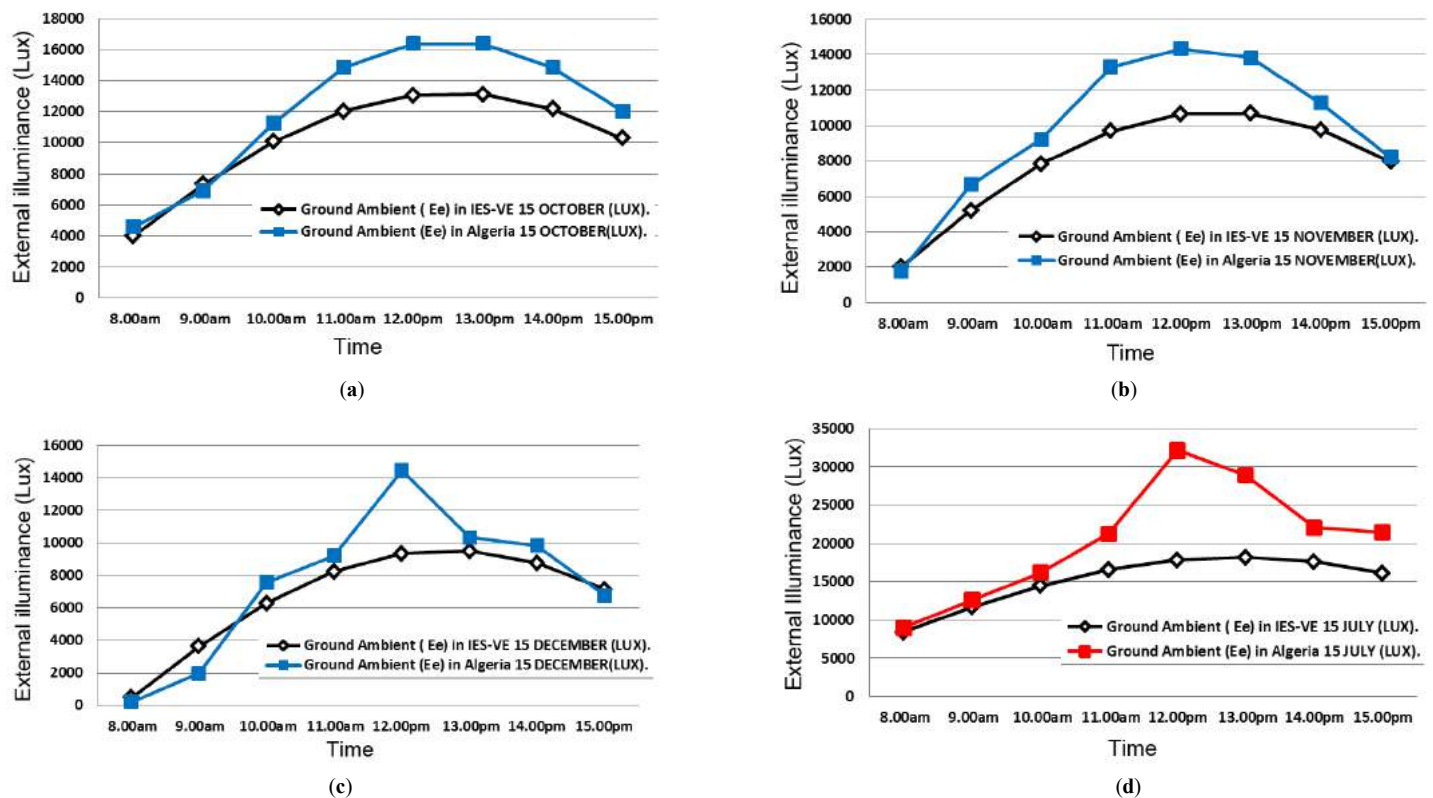


Fig. 5. Comparison between IESVE outdoor illuminance simulation and field measurement of outdoor illuminance on 15 (a) October, (b) November, (c) December, and (d) July.

glazing for daylighting and glazing for views [39,40]. For the use of bilateral lighting, reflective and tinted glasses are applied in the top part of windows in order to moderate the penetration of high angle sunlight [41] and to prevent the direct sunlight that causes glare, especially in summer. The clear glass is also applied in the lower part to maximise the view. In this study, seven patterns of glazing configurations were simulated through both axis (North-South and East-West) at 9:00 h. and 14:00 h., however the view glazing part was constantly using clear glass.

To study the potential of daylight utilisation, the DF, SIR, and the WPI were considered the most appropriate factors for indicating the quantity of daylight admitted-in and the effectiveness of the illumination on the system in both overcast and clear sky conditions, in addition to uniformity of daylight inside classrooms to achieve visual comfort. Due to the unique convergence of a similar climate between Algeria and France, it draws the need to build the results of this study with the stipulations of the French guidelines. The regulation of daylighting in schools is different from one country to another. However, The French Association of Lighting and Community (A.F.E) provides recommendations and regulations for school buildings [35], thus the performance indicator of French Standard (A.F.E) was selected, as shown in Table 2.

Furthermore, the Isolux diagrams present the spread and penetration of daylight inside the classroom with contour lines in order to show better graphical understanding for each windows configuration. However, the optimum glazing design identified based on; (1) the average illuminance distribution and DF (2) The maximum percentage of  $UDI_{300-500 \text{ lux}}$  with minimum percentage of  $UDI_{>500 \text{ lux}}$ .

### 3. Results and discussion

#### 3.1. Validation of results

Figure 5 shows the comparison between IESVE outdoor illuminance and Algerian outdoor illuminance measurements in the months that represent critical period (15th of July, October, November, and December). The results were simulated and cross-examined to denote a better comprehension of the prevailing conditions in the Mediterranean. From this study, the Mean Bias Error (MBE) and coefficient of determination ( $R^2$ ) indicators employed for validation stage. The measured outdoor illuminance under the skies of Algeria was somewhat higher when compared to the simulated data; it had almost steady fluctuations of less than 18 klx under CIE standard sky and 35klx under sunny sky. The highest outdoor illuminance was captured on midday between the periods of 11:00 h. to 13:00 h. Based on MBE indicator, the largest difference plotted in December and July on midday by 35%, 39.7% respectively. However, the daily average of the calculated MBE is less than 18%, which is consider within acceptable range [42]. The coefficient of determination  $R^2$  shows a high consistency under CEI sky condition, it is percentage ranging from (88% to 97%), the lowest value is calculated in July with 83.5%. Therefore, the outdoor illuminance is reliable during the experiment.

#### 3.2. Experimental results

From the measurements at summer solstice, it is clearly observed that there is excessive illuminance reaching towards 6689 lux in the classrooms facing south-north axis (bilateral lighting) that often leads to visual discomfort due to the saturation of light and even glare where close to the openings in all classroom directions. Moreover, the presence of sunlight patches and shadows are

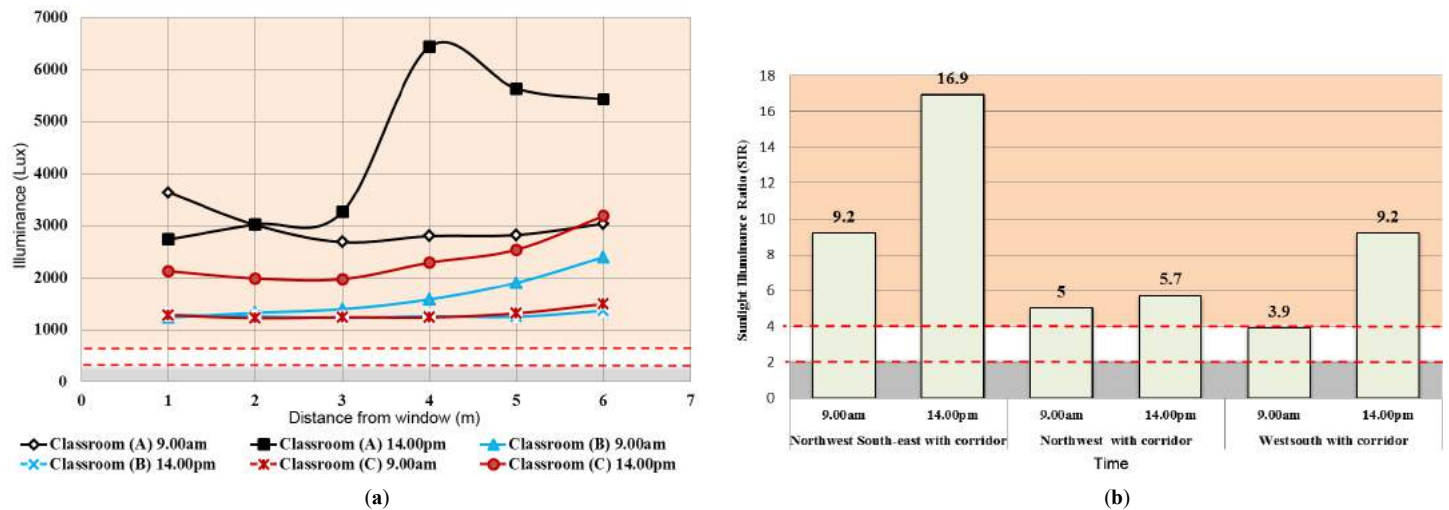


Fig. 6. Summary of distribution of (a) average daylight illuminance and (b) SIR of the classrooms tested at summer season.

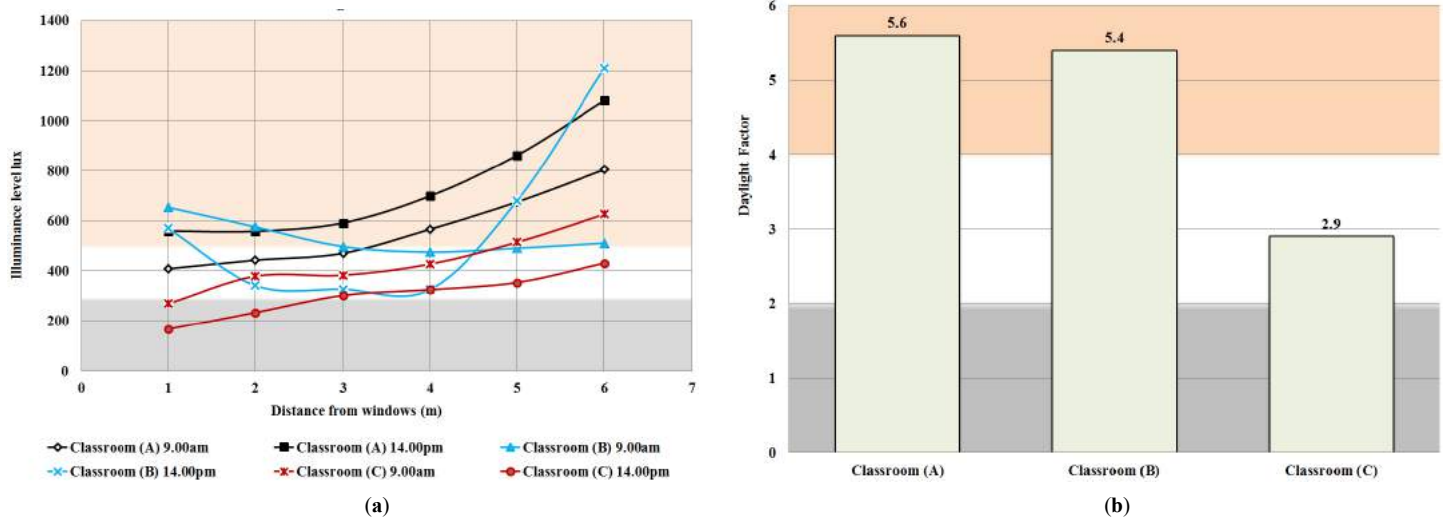


Fig. 7. Summary of distribution of (a) average daylight illuminance and (b) average daylight factor on the tested classrooms at winter season.

projected on the floor, walls, and tables. These sunlight patches evolved and changed position during the day and during different seasons of the year according to the angle of incidence of solar radiation. Direct sunlight is a source of visual discomfort and intensive heat, as expressed by teachers and students during the site visit. It is important to note those adjustments by occupants to achieve visual and thermal comfort, such as the manipulation of the curtains, moving the student to another table that is more comfortable and the incessant movement of teachers from one side of the room to another. In addition, visible coating on the bottom half of the windows on both sides of the classrooms were used to reduce the effect of glare.

In both classrooms, the distribution of daylight illuminance diminished slightly with increasing distance from external windows, until the middle of the classrooms and then rose up again until it reached the corridor window. However, the illuminance value near the corridor window was less than the external window side because of the existence of an external shading device, which could provide significant improvement in the indoor daylight quantity and quality. The classrooms (B, C) facing the east orientation due to the position of the sun in the morning allowed access to more illuminance, but the classroom (B) received less

illuminance due to the presence of the overhang. Conversely, the classroom (A) oriented to the south-east façade recorded an excessive illuminance reaching towards 7000 lux due to penetration of direct light. For all classrooms (A, B and C), a seating position near the windows did not respond to the international standard (A.F.E) and was considered uncomfortable for visual performance due to the direct penetration of sunlight on work plane inside the classrooms. Once reviewing the daylight uniformity with a clear sky, it could be seen that all the classrooms achieved uniformity greater than 0.5, except the classroom A at 14:00 h. generated low uniformity of 0.42 because the greatest contrast corresponds to 14:00 h. between both sides of windows, as shown in Appendix A.

The percentage of SIR throughout classrooms exceeded the reference value of 4%, which presented the risk of discomfort due to the saturation and the penetration of illuminance (Fig. 6). The exception was the classroom (C) oriented to the east-west with overhang, which had an SIR value of 3.96 due to the sun position and the protection from direct sunlight by means of an overhang on the east. The main reason behind these large amounts of daylight in both summer and winter solstice was the direct sunlight penetration through large windows (WWR more than 40%). In the

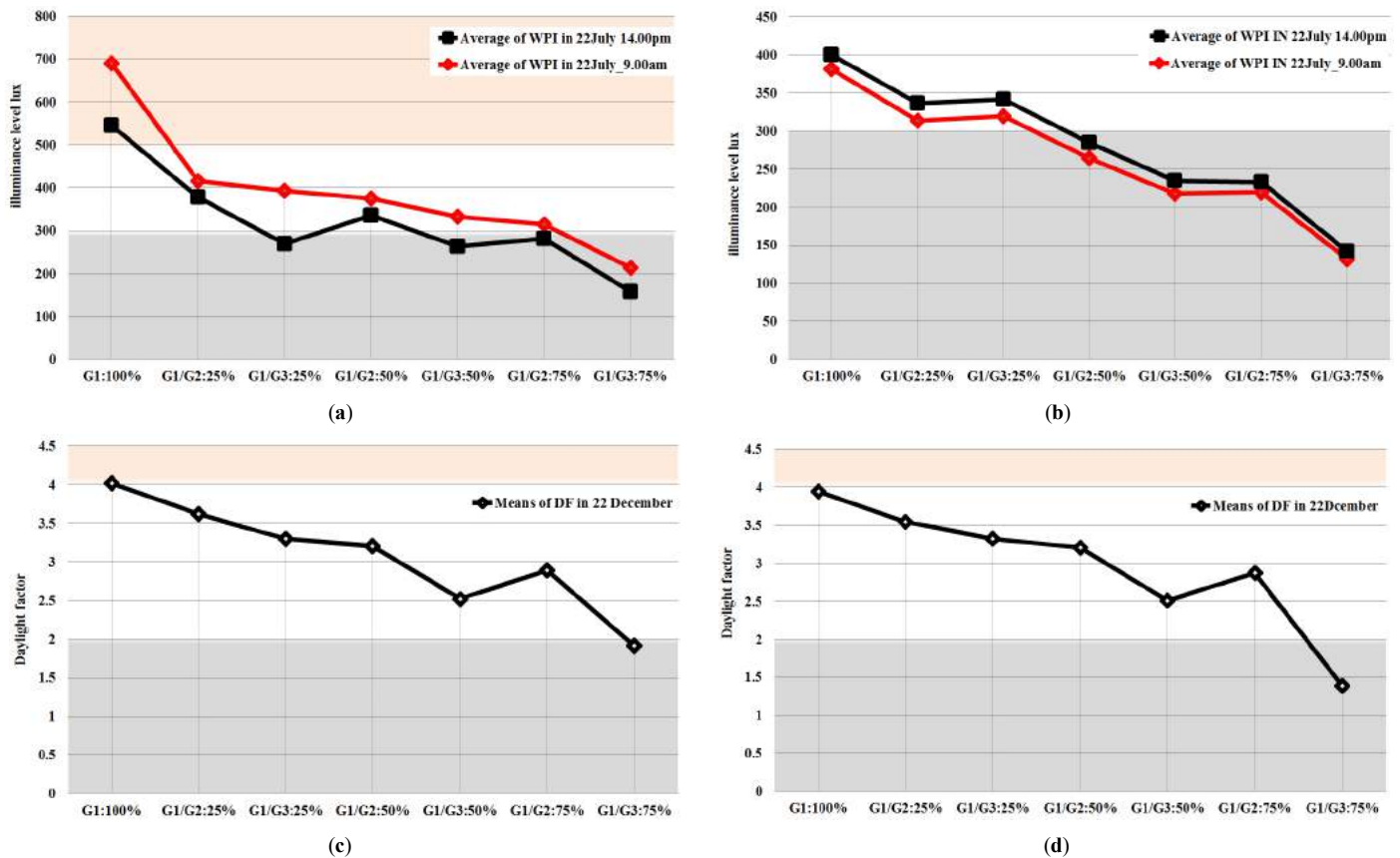


Fig. 8. Illuminance and daylight factor for glazing patterns in summer: (a) West-East and (b) North-South orientation and winter (c) North-South and (d) West-East with overhang season for classrooms.

Table 3. Useful daylight area for windows design by changing glazing size (threshold) in classrooms facing North-South and East-West orientations in summer and winter.

Range of Illuminance	< 300 lux		300-500 lux		> 500 lux	
	N-S	E-W	N-S	E-W	N-S	E-W
Orientation	N-S	E-W	N-S	E-W	N-S	E-W
Clear Glass G1 100% 9:00 h. (reference model)	31.3	35.1	39.9	46.2	28.8	18.7
Clear Glass G1 100% 14:00 h. (reference model)	23.2	52.6	21.0	35.2	55.8	12.2
Tint glass + Clear glass G1+G2:25% 9:00 h.	32.8	27.3	42.5	43.8	25.2	28.9
Tint glass + Clear glass G1+G2:25% 14:00 h.	24.8	63.2	27.9	17.5	47.3	19.7
Tint glass + Clear glass G1+G2:50% 9:00 h.	37.3	30.1	42.3	48.3	20.4	21.7
Tint glass + Clear glass G1+G2:50% 14:00 h.	27.1	72.1	33.7	19.3	39.3	8.6
Tint glass + Clear glass G1+G2:75% 9:00 h.am	55.5	38.6	26.5	54.0	18.1	7.5
Tint glass + Clear glass G1+G2:75% 14:00 h.pm	29.1	82.1	39.0	10.4	32.0	7.5
Reflection glass + Clear glass G1 + G3:25% 9:00 h.	36.3	39.7	42.5	47.8	21.2	12.5
Reflection glass + Clear glass G1 + G3:25% 14:00 h.	26.5	69.6	32.6	21.0	40.9	9.4
Reflection glass + Clear glass G1 + G3:50% 9:00 h.	59.3	58.7	25.8	33.8	14.8	7.5
Reflection glass + Clear glass G1 + G3:50% 14:00 h.	31.6	83.4	40.5	9.9	27.9	6.7
Reflection glass + Clear glass G1 + G3:75% 9:00 h.	72.5	83.0	16.1	13.5	11.4	3.5
Reflection glass + Clear glass G1 + G3:75% 14:00 h.	54.3	89.9	25.9	6.1	19.8	10.5

winter, the illuminance level is around 700 lux, while in summer it reached up to 3000 lux. Furthermore, the usage of clear glazing with visible light transmittance (VLT) as high as 92% supplied the classrooms with large amount of sunlight.

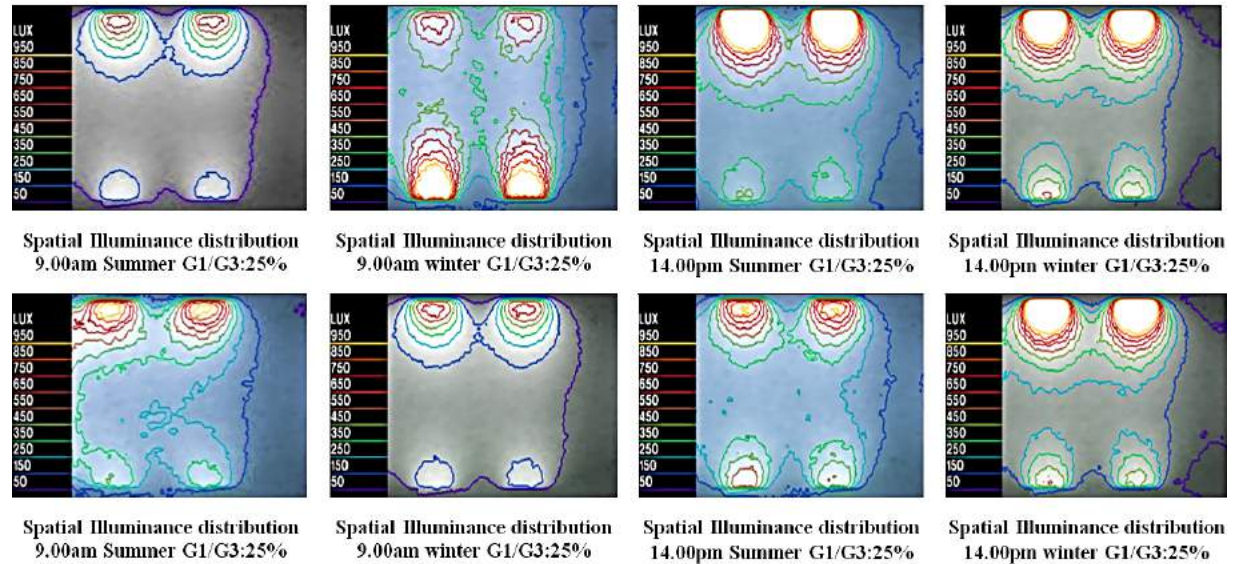
As shown in Fig. 7, in winter for classrooms A and B, the illuminance level on the seating position near the external window (Column 6) were high and did not respond to the international

standard (A.F.E). Thus, they are considered uncomfortable for visual performance, except the classroom C which had almost achieved the required of illuminance level. On the other hand, the illuminance near to corridor windows (Column 1) was lower than the other side because of the presence of an overhang that reduced the quantity of daylight and improved the illuminance conditions within the classroom [33]. The DF was considered the most



**Table 4.** Distribution of DF for windows design by changing glazing size (threshold) in classrooms facing north-south and east-west orientations in summer and winter.

Range of DF	< DF 2%		DF 2-4%		DF 4-7%		> DF 7%
	N-S	E-W	N-S	E-W	N-S	E-W	N-S
Orientation	N-S	E-W	N-S	E-W	N-S	E-W	N-S
Clear Glass G1 100% 9:00 h. (reference model)	29.4	29.4	38.3	38.3	20.0	20.0	12.4
Clear Glass G1 100% 14:00 h. (reference model)	31.0	31.2	40.3	39.9	13.7	17.9	11.0
Tint glass + Clear glass G1+G2:25% 9:00 h	33.7	33.7	42.5	42.3	14.5	14.8	9.2
Tint glass + Clear glass G1+G2:25% 14:00 h	41.1	41.7	38.6	38.2	12.4	12.2	8.0
Tint glass + Clear glass G1+G2:50% 9:00 h	32.9	33.3	42.0	41.4	14.8	15.2	10.1
Tint glass + Clear glass G1+G2:50% 14:00 h	54.2	53.8	28.9	29.4	9.7	9.6	7.2
Reflection glass + Clear glass G1 + G3:75% 14:00 h	69.3	69.2	17.7	17.9	7.6	7.5	5.4

**Fig. 9.** Isolux contour of the optimum glazing pattern in both summer and winter for daylighting distribution at different times of the day based on simulation of typical model Algerian classroom

appropriate factor for indicating the quantity of light admitted. The effectiveness of the illumination on the system in an overcast sky (winter), as shown in Figure 7, the means of DF of each classroom tested on our measurements exceeded the reference value of 4%, which presented a risk of discomfort due to the saturation of illuminance. However, the classroom used bilateral clerestory typology oriented to the south-east obtains the better result among these classrooms; the uniformity in winter under an overcast sky achieved greater than 0.5. This means the bilateral typology achieved the optimal level of uniformity in addition to clerestory bilateral typology.

As a result, although the daylight in subtropical zones such as Algeria is sufficient to achieve the required illumination conditions in classrooms, it was not optimally exploited. Numerous causes behind these excessively high amounts of daylight include using large windows, in addition to the usage of clear glazing on windows in a subtropical climate, which is quite difficult to manage throughout the whole year, particularly in summer.

### 3.3. Simulation results

The pattern A1 is the most unfavorable for north-south orientation because the average illuminance level was in the lowest values in winter in the morning period, which reached 131.5 lux through using 75% of reflective glass on daylight

glazing Pattern B1. Figure 8 also showed an increase in the illuminance value in the afternoon period compared with morning period. Nevertheless, three window patterns obtained the range suggested by the AFE guideline which are the patterns 1, B1 and B2; clear glass G1:100% yielded 381.28–400.21 lux while clear with tinted glass Pattern A3 recorded 313.75–336.66 lux due to the use of a substantial percentage of clear glass (not less than 75%) on the North orientation. However, the pattern A2 achieved 284.4 lux. The other patterns are below the recommended value because of using reflective glass with a percentage higher than 50%.

In winter season, it can be seen that both pattern 1 and pattern B1 did not respond to the guideline parameter. They were either too bright by using G1:100, or too dark by means of pattern B1. On the other hand, the maximum average illuminance of classrooms faced to east-west orientation was reached by the pattern 1 which reached 689.77 lux in the morning. The average illuminance was inconsistent in the morning and afternoon in solstice summer and winter. The average illuminance for each pattern in the morning was higher than the same pattern in the afternoon. The east-west oriented classroom benefits from the morning sun but the solar radiation is then difficult to be controlled because the sun is at low angle at the horizon. In cases when there was no overcast sky during the winter months, the sunlight was not as strong but penetrated farther into the classroom than in summer when the sun was high in the sky. On the other hand, at

summer solstice, the east orientation presented a higher solar exposure than the south orientation, therefore, there is a real risk of glare, and the sun can induce significant overheating.

In order to select the optimum glazing windows configuration, Table 3 show the highest percentage of UDI for these glazing configurations which have north-south facing orientation in both solstice seasons. Patterns A3 and B2 are similar and achieved the highest percentage among other patterns. The pattern B3 recorded 42.00% - 41.54% in winter and 42.48% and 32.63% in summer in the morning and afternoon respectively. In addition, the pattern A2 recorded 42.54% - 42.55% in winter and 42.31 - 33.67% in summer. However, the view glazing of the pattern B3 offers a view to the outdoors better than the pattern A2. Therefore, the optimum glazing option for a north orientation is (G1+G3:25%).

Using reflective glass within classrooms provides an excessive percentage of fair and dark area < 300 lux in summer. According to Table 3, in terms of glazing size the tinted glazing configurations, G1+G2 had the highest percentage of useful area of illuminance by using the pattern A2 in solstice winter and summer facing East-West. In overall, the usable area has an upward trend in fair area (DF < 2%) from 31.22% to 41.74% in winter and 31.22% to 41.74% in summer by increasing the percentage of tinted glass from 25% to 75%. The percentage of the bright area (DF > 4%) declined correspondingly by the augmentation of tinted glass from 25% to 75%, and rising dramatically to the peak percentage 17.91% of too bright area and 11.01% of thermal and glare area in winter and 28.94% in summer respectively, by using the pattern in the morning.

In winter, under an overcast sky condition with changing glazing size from 25% to 75%, the useful daylight area had irregularity (respectively, 42.25% - 38.15% reduction) which means by increasing clear glazing size each of defined area does not increase with the same proportion. In summer, under clear sky conditions, the Table 4 indicates good area increased steadily by raising the percentage of tinted glass from 43.76% to 53.95% in the morning. However, the percentage of useful daylight area was inconsistent (19.27% - 10.40% reduction) due to the diminishing bright area and rising of fair area by increasing percentage of tinted glass. The percentages of usable fair area in the afternoon period were much higher than the morning period. The difference in percentage reached more than 40%. This means it was too difficult to control the day lit area within the classrooms facing the East-west axis at summer season during the day by using glazing system. However, the effectiveness of the overhang on the south orientation is obvious on the isolux contour images (Fig. 9); the bottom side of the image represents the northern side, and the upper side represent the southern part that enclosed by an overhang (shading device).

#### 4. Conclusions

In summary, the investigation of different glazing configurations shows a significant improvement in the quality of daylighting within classrooms under a Mediterranean climate that reached up to 20% on the North-South axis and approximately 10% on the East-West axis. The usage of glazing strategy is not enough to achieve the best quality and quantity of daylighting. Consequently, there is a need for enhancement with shading devices to have a better classroom environment in Algeria. A careful design of window sizes and glazing patterns strategies should be included in

the design guideline for Algerian climate to maximize daylight. This is due to the reduction of UDI > 500 lux up to 19.27% to 10.40% for tinted glass achieved in the experiment carried out, which indicated a significant reduction on visual discomfort. In conclusion, the results from the research have suggested design recommendations for public school and recommendations for classroom windows design:

1. As revealed in this study, the WWR more than 40% does not ensure the adequate levels of lighting because, in most of the studied cases, we obtained too much light, i.e. illuminances “too high” throughout the year. Because of this, this study concludes that it is necessary to include more variables to ensure better lighting conditions for the students.
2. A 30% WWR should be used for all public schools, which are in line with the Algerian guideline recommendations.
3. The optimum window glazing pattern facing to north and east orientations that achieved the highest percentage of useful daylight area within the classroom is Pattern B3 (G1+G3:25%), thus it is recommended to be used for classroom design guideline in Algeria public schools.
4. A bilateral typology for public school should be used to achieve an adequate daylight uniformity > 0.5, and optimal distribution.
5. The recommended orientation for bilateral typology classroom in Algeria public school is South-East axis. Furthermore, north-south axis should provide by external shading device.

#### Acknowledgment

This research was financed by Professor Mesloub Said Department Mathematics King Saud University, College of Sciences P. O. Box 2455; Riyadh 11451 Saudi Arabia.

#### Contributions

M. Abdelhakim conceived the study, performed all measurements and simulations, interpreted the results, and wrote the manuscript. M. Z. Kandar supervised with help each stage of the project in terms of data collection, analysis and interpretation. Y.-W. Lim provided constructive advice to shape the final manuscript.

#### Appendix A

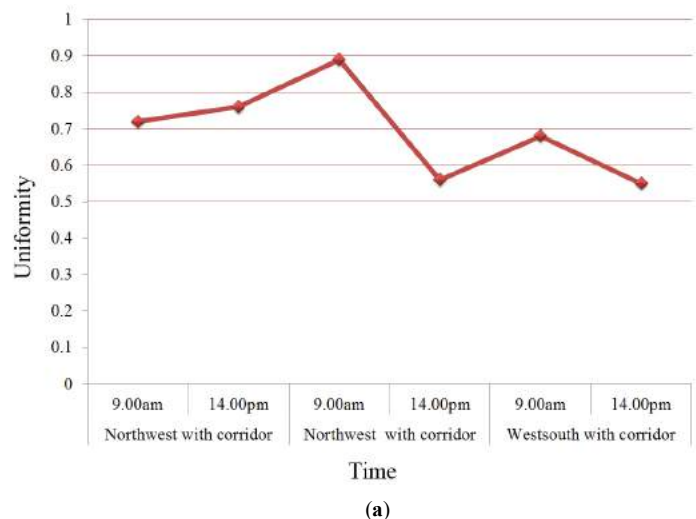




Fig. A1. The uniformity of daylight in both typology (bilateral and clerestory lighting) in different orientations at solstice (a) summer and (b) winter.

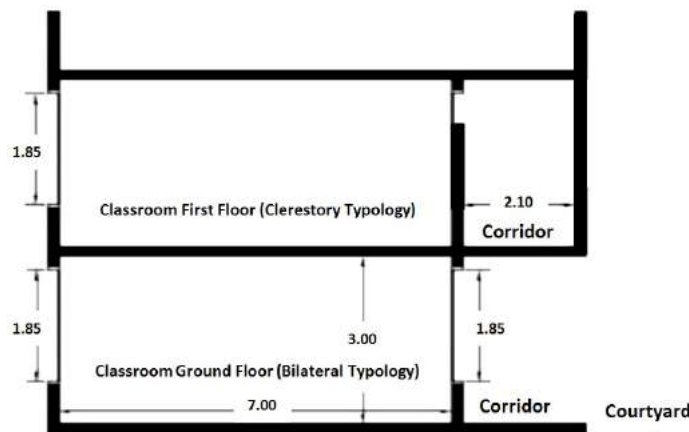


Fig. A2. Section of tested classrooms used in the experiment for measurements.

## References

[1] P.O. Akadiri, E.A. Chinyio, and P.O. Olomolaiye, Design of a sustainable building: A conceptual framework for implementing sustainability in the building sector, *Buildings* 2 (2012) 126-152.

[2] D. Rouag-Saffidine, Daylight: a Recurrent Source of Conflict in Learning Enclosures under Clear Skies. Adjunct proceedings experiencing light 2009: pp. 29.

[3] P.R. Boyce, Human factors in lighting. 2014: Crc Press.

[4] P. Andersen, R. Foldbjerg, Daylight, Energy and Indoor Climate Basic Book. Editorial team: Daylight Energy and Indoor Climate (DEIC), VELUX A/S, 2012, pp.18.

[5] A.I. Dounis and C. Caraiscos, Advanced control systems engineering for energy and comfort management in a building environment—A review. *Renewable and Sustainable Energy Reviews*, 13(2009) 1246-1261.

[6] M. Abdelhakeem, D.Y. Aminu, and M.Z. Kandar, Investigating use of daylight in a typical algerian public classroom typology. *Jurnal Teknologi*, 77 (2015) 21-30.

[7] J.L. Hensen, R. Lamberts, Building performance simulation for design and operation, 2012, Routledge.

[8] D. Andersen, R. Foldbjerg, Daylight, Energy and Indoor Climate—Basic Book. Editorial team: Daylight Energy and Indoor Climate (DEIC), VELUX A/S, 2012.

[9] D.H. Li, A review of daylight illuminance determinations and energy implications. *Applied Energy* 87(2010) 2109-2118.

[10] S.M. Mousavi, T.H. Khan, and Y.-W. Lim, Impact of Furniture Layout on Indoor Daylighting Performance in Existing Residential Buildings in Malaysia, *Journal of Daylighting* 5 (2018) 1-13.

[11] J.T. Kim and G. Kim, Overview and new developments in optical daylighting systems for building a healthy indoor environment. *Building and Environment*, 45(2010) 256-269.

[12] C.F. Reinhart and J. Wienold, The daylighting dashboard—A simulation-based design analysis for daylit spaces, *Building and environment* 46(2011) 386-396.

[13] L. Bellia, F. Fragliasso, and A. Pedace, Evaluation of Daylight Availability for Energy Savings, *Journal of Daylighting* 2 (2015) 12-20.

[14] F. Cantin, M.C. Dubois, Daylighting metrics based on illuminance, distribution, glare and directivity. *Lighting Research & Technology* 43(2011) 291-307.

[15] J. Mardaljevic, et al. Daylighting metrics: is there a relation between useful daylight illuminance and daylight glare probability, in Proceedings of the building simulation and optimization conference (BSO12), Loughborough, UK. 2012.

[16] V. Costanzo, et al., Static and dynamic strategies for improving daylight use in side-lit classrooms: A case study, Proceedings of the BSA, 2017.

[17] A. Nabil, J. Mardaljevic, Useful daylight illuminances: A replacement for daylight factors. *Energy and buildings*, 38 (2006) 905-913.

[18] V. Costanzo, G. Evola, and L. Marletta, A review of daylighting strategies in schools: state of the art and expected future trends, *Buildings* 7 (2017) 41.

[19] R.A. Mangkuto, M. Rohmah, and A.D. Asri, Design optimisation for window size, orientation, and wall reflectance with regard to various daylight metrics and lighting energy demand: A case study of buildings in the tropics, *Applied energy* 164 (2016) 211-219.

[20] N. Petermann, Research Tool Dissemination to Increase Energy Efficient Fenestration Product Penetration -The Efficient Windows Collaborative Tools for Schools-, in Final Technical Report Prepared for the U.S. Department of Energy by the Alliance to Save Energy 2011, Regents of the University of Minnesota, Twin Cities Campus, Center of Sustainable Building Research, USA, 2011.

[21] H. Hellinga, Daylight and view: the influence of windows on the visual quality of indoor spaces, 2013, TU Delft, Delft University of Technology.

[22] J. Carmody, et al., Window System for High-Performance Buildings, 2004, W. W. Norton & Company.

[23] N.T. Al-Ashwal, A.S. Hassan, The Impact Of Daylighting -Artificial Lighting Integration on Building Occupant's Health and Performance . *International Journal Transaction Journal of Engineering Management & Applied Sciences & Technologies* 9 (2018) 97-105.

[24] V. De Giuli, O. Da Pos, and M. De Carli, Indoor environmental quality and pupil perception in Italian primary schools, *Building and Environment* 56 (2012) 335-345.

[25] E.L. Krüger, A.L. Dorigo, Daylighting analysis in a public school in Curitiba, Brazil. *Renewable Energy* 33 (2008) 1695-1702.

[26] P. Ricciardi, C. Buratti, Environmental quality of university classrooms: Subjective and objective evaluation of the thermal, acoustic, and lighting comfort conditions, *Building and Environment*, 127 (2018) 23-36.

[27] R. Syaheeza, et al. Secondary school classrooms daylighting evaluation in Negeri Sembilan, Malaysia. in IOP Conference Series: Materials Science and Engineering. 2018. IOP Publishing.

[28] A. Gilavand, M. Gilavand, and S. Gilavand, Investigating the impact of lighting educational spaces on learning and academic achievement of elementary students, *International Journal of Pediatrics* 4 (2016) 1819-1828.

[29] A. Demir, A. Konan, Impact of daylighting on student and teacher performance. *Journal of Educational and Instructional Studies in the World* 3 (2013) 7.

[30] A. Meresi, Evaluating daylight performance of light shelves combined with external blinds in south-facing classrooms in Athens, Greece, *Energy and Buildings* 116 (2016) 190-205.

[31] M.H. Moazzeni, Z. Ghiabaklou, Investigating the influence of light shelf geometry parameters on daylight performance and visual comfort, a case study of educational space in Tehran, Iran, *Buildings*, 6 (2016) 26.

[32] P. Tregenza, M. Wilson, Daylighting: architecture and lighting design. 2013: Routledge.

[33] C.K. Tanner, Effects of school design on student outcomes, *Journal of Educational Administration* 47 (2009) 381-399.

[34] M.C. Ho, et al., Optimal sun-shading design for enhanced daylight illumination of subtropical classrooms, *Energy and buildings* 40 (2008) 1844-1855.

[35] A.D. Mathalamuthu, et al., Illuminance Uniformity Using Public Works Department (PWD) Standard Design for Public Schools Classroom Design

- in Malaysia, *Journal of Advanced Research in Fluid Mechanics and Thermal Sciences* 52 (2018) 205-214.
- [36] AFE Association française, *Relatives recommendations of daylighting in schools*. 1998, Paris (52 Bd Malesherbes, 75008): Society d'éd. Lux.
- [37] Y.W. Lim, M.H. Ahmad, and D.R. Ossen, Empirical validation of daylight simulation tool with physical model measurement, *American Journal of Applied Sciences* 7 (2010) 1426.
- [38] N. Zemmouri, *Achieving Environmental Security: Ecosystem Services and Human Welfare*, 2010, Department of architecture, University of Biskra, Algeria.
- [39] G. Menzies, J. Wherrett, *Windows in the workplace: examining issues of environmental sustainability and occupant comfort in the selection of multi-glazed windows*, *Energy and Buildings* 37 (2005) 623-630.
- [40] D.S. David Hansen, *National Best Practices -Manual For Building High Performance Schools-* D.o. Energy, Editor, Department of Energy, U.S., 2007.
- [41] J. Mardaljevic, B. Painter, and R. Waskett, *Neutral daylight illumination with variable transmission glass: Theory and validation*, *Lighting Research & Technology* 48 (2015) 267–285.
- [42] C. Reinhart and P.-F. Breton, *Experimental validation of Autodesk 3ds Max Design 2009 and DAYSIM 3.0.*, Eleventh International IBPSA Conference, 2009, Glasgow, Scotland.