

**SUBARNEPIBENING ANDNSP  
M GORPHICILNNO SSENNOY**

CHAI BENG CHUNG

A thesis submitted in fulfillment of the requirement for the award of  
Master of Science (Hydrography)

Faculty of Geoinformation Science and Engineering  
Universiti Teknologi Malaysia

SEPTEMBER 2006

## ABSTRACT

Major advances have been achieved in recent years in submarine pipeline routing and inspection. Various tools and techniques are used to ensure the maximum safety of the submarine pipelines. The resulting consequence of these tools and techniques is the ever increasing data volumes, with the management and subsequent analysis of the data becoming more and more of an issue. The objective of this study is to implement the capabilities of Geographical Information System (GIS) to assemble various submarine pipeline related datasets into a common, compelling, efficient, user-friendly and interesting visualization system. In this study, GIS is used as the Spatial Decision Support System (SDSS), to provide appropriate information for efficient decision-making in submarine pipeline routing and inspection activities. A review of the literature concerning submarine pipeline routing and inspection technologies as well as GIS applications for both operations has been made for a better understanding to the existing problem faced by the industry. With the proper conceptual, logical and physical model design, an integration system has been developed to assemble, manipulate and analyze various submarine pipeline related datasets into a geodatabase. Sequentially, numerous Least Cost Paths (LCPs) have been determined to identify the most preferred route from SpringField platform to AutumnField platform, while considering the myriad of complex spatial interactions according to the diversified routing criteria. The best routing is then prudently analysed based on these LCPs with several geoprocessing analysis. Meanwhile, this study has integrated Digital Video System (DVS) datasets into ArcGIS-ArcMap environment to simultaneously record multiple channels of inspection video into a geodatabase and replay them synchronously according to its geographic features. Finally, some recommendations for future studies are made to enhance the quality of this study as well as to minimize the risk of offshore industries.

## ABSTRAK

Pembangunan dalam kerja perancangan dan pemeriksaan laluan saluran paip dasar laut semakin pesat kebelakangan ini. Pelbagai teknik dan peralatan digunakan bagi menjamin keselamatan yang maksimum bagi laluan saluran paip dasar laut tersebut. Ini telah meningkatkan jumlah data dan menimbulkan isu ke atas pengurusan analisis yang berturutan. Objektif utama bagi kajian ini ialah bagi mengimplimentasi keupayaan Sistem Maklumat Geografi (GIS) untuk mengumpul pelbagai data berkenaan saluran paip dasar laut ke dalam dataset yang bersesuaian, efisien, mesra pengguna dan mempunyai sistem visualisasi yang menarik. Dalam kajian ini, GIS bertindak selaku *Spatial Decision Support System (SDSS)* yang berfungsi untuk menyediakan maklumat bagi membantu membuat keputusan yang lebih efisien dalam aktiviti perancangan dan pemeriksaan laluan saluran paip dasar laut. Kajian literatur berkenaan aplikasi GIS dan teknologi dalam perancangan dan pemeriksaan laluan saluran paip dasar laut dilakukan bagi mendapatkan pemahaman yang lebih mendalam berkenaan masalah yang dihadapi dalam industri ini. Satu sistem integrasi yang berdasarkan model konseptual, logikal dan fizikal telah dibangunkan bagi mengumpul, memanipulasi dan menganalisis pelbagai dataset berkenaan saluran paip dasar laut di dalam satu *geodatabase*. Ini diikuti dengan penentuan beberapa *Least Cost Paths (LCPs)* bagi mengenal pasti laluan yang bersesuaian dari pelantar SpringField ke pelantar AutumnField dengan mengambil kira kepelbagaian interaksi spatial yang kompleks berdasarkan beberapa kriteria laluan. Laluan LCP yang terbaik ditentukan melalui beberapa analisis *geoprocessing*. Dalam masa yang sama, pengintegrasian set data *Digital Video System (DVS)* kedalam ArcGIS-ArcMap secara langsung merekodkan video pemeriksaan yang berbilang saluran ke dalam satu *geodatabase* dan memainkannya semula serentak berdasarkan rupa bentuk geografik. Akhir sekali, beberapa cadangan kajian pada masa hadapan dibuat untuk mempertingkatkan kualiti kajian ini serta meminimakan risiko bagi industri lepas pantai.

## TABLE OF CONTENTS

CHAPTER	TITLE	PAGE
	<b>TITLE PAGE</b>	i
	<b>DECLARATION</b>	ii
	<b>DEDICATION</b>	iii
	<b>ACKNOWLEDGEMENTS</b>	iv
	<b>ABSTRACT</b>	v
	<b>ABSTRAK</b>	vi
	<b>TABLE OF CONTENTS</b>	vii
	<b>LIST OF TABLES</b>	xi
	<b>LIST OF FIGURES</b>	xiii
	<b>LIST OF NOTATION</b>	xvi
	<b>LIST OF ACRONYMS</b>	xix
	<b>LIST OF APPENDIXES</b>	xxii
<b>1</b>	<b>INTRODUCTION</b>	1
	1.1 Background	1
	1.2 Problem Statement	5
	1.3 Research Purpose	7
	1.4 Research Objectives	7
	1.5 Research Scopes	8
	1.6 Overview of Research Methodology	12
	1.7 The Benefit of this Study	13
	1.8 Related Works	15

1.8.1	Standard Revision of Submarine Pipeline	15
1.8.2	Computational Fluid Dynamics Solutions	17
1.8.3	Enhancement of Structural Stability	18
1.8.4	Spatial Decision Support System	19
1.9	Summary	21
<b>2</b>	<b>SUBMARINE PIPELINE ROUTING DESIGN</b>	<b>22</b>
2.1	Introduction	22
2.2	Submarine Pipeline Routing Evaluation	23
2.3	Hydrodynamic Forces	27
2.4	Vortex-Induced Oscillations	31
2.5	Pipeline-Soil Stability Analysis	33
2.5.1	Settlement and Flotation	33
2.5.2	Soil Strength Deterioration	34
2.5.3	Effect of Large Soil Movements	35
2.6	Effect of Seabed Irregularities	37
2.7	Scour and Erosion	41
2.8	GIS for Pipeline Routing Evaluation	44
2.8.1	Discrete Cost Map (DCM)	46
2.8.2	Accumulated Cost Map (ACM)	47
2.8.3	Optimal Route (OR)	48
2.8.4	Optimal Corridor (OC)	49
2.9	Summary	50
<b>3</b>	<b>SUBMARINE PIPELINE INSPECTION TECHNOLOGY</b>	<b>51</b>
3.1	Introduction	51
3.2	The Need of Pipeline Inspection Survey	52
3.3	Internal Pipeline Inspection (IPI)	55
3.4	External Pipeline Inspection (EPI)	58
3.4.1	Multibeam Technology	58
3.4.2	Side Scan Sonar (SSS)	63

	3.4.3	Remotely Operated Vehicle (ROV)	65
	2.9	Pipeline Protection Methods	68
	2.10	GIS in Pipeline Inspection	70
	2.10.1	IPI with GIS	70
	2.10.2	EPI with GIS	73
	2.11	Summary	74
<b>4</b>		<b>RESEARCH METHODOLOGY</b>	<b>76</b>
	4.1	Introduction	76
	4.2	Phase I – Preliminary Works	77
	4.3	Phase II – System Design	78
	4.3.1	Conceptual Design	80
	4.3.2	Logical Design	83
	4.3.3	Physical Design	84
	4.4	Phase III – System Development	86
	4.4.1	Format Conversion	87
	4.4.2	Map Digitizing & Editing	88
	4.4.3	Geodatabase Development	92
	4.4.4	Programming	93
	4.4.5	System Customization	94
	4.5	Phase IV – System Evaluation	95
	4.6	Phase V – Research Documentation	95
	4.7	Summary	96
<b>5</b>		<b>RESULT AND ANALYSIS</b>	<b>97</b>
	5.1	Introduction	97
	5.2	GIS in Submarine Pipeline Routing	98
	5.2.1	LCP Selection	99
	5.2.1.1	DCM Analysis	100
	5.2.1.2	ACM Analysis	107
	5.2.1.3	Shortest Path Analysis	114
	5.2.2	Hydrodynamic Analysis	117

5.2.3	LCP Finalization	123
5.2.4	Subsurface Modelling	132
5.3	GIS in Submarine Pipeline Inspection	134
5.4	Summary	140
<b>6</b>	<b>CONCLUSION AND RECOMMENDATIONS</b>	<b>141</b>
6.1	Conclusion	141
6.2	Recommendations	143
	<b>BIBLIOGRAPHY</b>	<b>148</b>
	<b>APPENDIX</b>	<b>161</b>

## LIST OF TABLES

<b>TABLE NO.</b>	<b>TITLE</b>	<b>PAGE</b>
1.1	Hardware and software	8
1.2	Available datasets	10
2.1	Types of submarine pipelines	23
2.2	Constraints involved in pipeline design	24
2.3	Special considerations for pipeline installation in unstable areas	25
2.4	Linear (Airy) wave characteristics	30
3.1	Major needs of submarine pipeline inspection	53
3.2	Pipeline inspection and monitoring methods	55
3.3	Technologies used in intelligent PIGs	57
3.4	Protection method of submarine pipeline	68
4.1	Spatial E-R model symbology	81
4.2	Basic elements of logical data model	83
4.3	Map georeferencing accuracies	89
4.4	Comparison of spatial interpolation methods	90
5.1	Hazards constraint & its requirements	101
5.2	Discrete cost map classifications – Basic considerations	102
5.3	Discrete cost map classifications – Oceanographic considerations	103
5.4	Discrete cost map classifications – Hydrodynamic considerations	103
5.5	Weighting rate of LCP cost models	109
5.6	Length of LCP	114
5.7	Result of Exploratory Spatial Data Analysis (ESDA)	119
5.8	LCP evaluation – Boundary intersection	125



5.9	LCP evaluation – Profile irregularities	126
5.10	LCP evaluation – Installation depth limits	127
5.11	LCP evaluation – Soil properties	128
5.12	LCP evaluation – Obstruction crossing	129
5.13	LCP evaluation – Coral crossing	129
5.14	LCP evaluation – Pockmark crossing	130
5.15	LCP Finalization	131
5.16	Telemetry contents in VideoDRS	137
5.17	Results of Pipeline Inspection	139

## LIST OF FIGURES

FIGURE NO.	TITLE	PAGE
1.1	Submarine pipeline development in Gulf of Mexico (1999-2003)	2
1.2	Petroleum transportation costs	2
1.3	'Bath tub" failure curve and extending pipelines' lives	3
1.4	Study area	9
1.5	Overview of research methodology	12
2.1	Flow diagram of pipeline routing and weight design	26
2.2	Hydrodynamic forces on pipe	27
2.3	Definitions of linear wave parameters	28
2.4	Flow diagram of hydrodynamic forces computation	29
2.5	Vortex-induced oscillations	31
2.6	Flow diagram of vortex-induced oscillations computation	32
2.7	Storm-induced bottom pressures	34
2.8	Flow diagram of maximum dimensionless stress computation	37
2.9	Pipe configurations due to low depression	38
2.10	Stresses due to low depressions	39
2.11	Pipe configuration due to elevated obstructions	40
2.12	Stresses due to elevated obstructions	41
2.13	Modes of grain transport	42
2.14	Current velocity for sediment transport	43
2.15	Concept of LCP analysis	44
2.16	Methodology of LCP analysis	45
2.17	Discrete Cost Map (DCM)	46

2.18	Accumulated Cost Map (ACM)	47
2.19	Optimal Route (OR)	48
2.20	Optimal Corridor (OC)	49
3.1	Pigs	56
3.2	Multibeam survey for EPI operation	59
3.3	EPI for exposed pipes	60
3.4	EPI of burial pipe	61
3.5	EPI of free-spanning pipe	61
3.6	Pipe DTM generated from echoes measurement	62
3.7	Typical SSS configurations and its result	64
3.8	ROV surveying	65
3.9	Common configuration of a ROV	66
3.10	Video Tracking Systems (VTS)	67
3.11	Some results of the pipeline edge extraction algorithm on different real situations	67
3.12	Protection methods of submarine pipeline	69
3.13	Tracking pig with GIS	71
3.14	IPI application with MapObjects	72
3.17	GIS Applications for EPI	73
3.18	EPI with VideoDRS	74
4.1	Flow diagram of preliminary works	77
4.2	Flow diagram of system design	79
4.3	Conceptual Model	82
4.4	Implementation of physical design	84
4.5	ArcToolbox migration wizards	85
4.6	Flow diagram of system development	86
4.7	Methodology of format conversion	87
4.8	Methodology of map digitizing & editing	88
4.9	Oceanographic maps for January 1960	91
4.10	Methodology of geodatabase development	92
4.11	Programming flow	93
4.12	Flow diagram of system customization	94
5.1	LCP methodology	99
5.2	Procedures of source and cost datasets creation	100

5.3	Methodology of discrete cost map creation	104
5.4	Basic considerations for DCM	105
5.5	Special consideration of reclassifications	106
5.6	Model of straight-line distance	107
5.7	Concept of cost maps accumulation	108
5.8	Accumulated cost maps (Model A – F)	111
5.9	Accumulated cost maps (Model G – L)	112
5.10	Concept of direction raster coding	113
5.11	Least cost path (Model A-F)	115
5.12	Least cost path (Model G - L)	116
5.13	Methodology of hydrodynamic analysis	117
5.14	Interfaces of wave calculator & hydrodynamic calculator	118
5.15	Wave characteristic maps- Part I	120
5.16	Wave characteristic maps- Part II	121
5.17	Hydrodynamic maps	122
5.18	LCP errors	123
5.19	Methodology of LCP evaluation	124
5.20	Methodology of subsurface modelling in RockWorks2004	132
5.21	Map of soil types	133
5.22	Screenshot of VideoRDS	136
5.23	Telemetry Display with VideoDRS	137
5.24	General flow of VideoDRS operation	138

## LIST OF NOTATIONS

$\phi$	-	Grain size
$\theta$	-	Wave characteristics constant value, $(2\pi t)/T$
$\Theta$	-	Slope of seabed
$\eta$	-	Wave profile
$\rho$	-	Density of fluid, 2 slug/ft <sup>3</sup> for sea water
$\delta$	-	Obstruction elevation
$\rho_s g$	-	Weight density of steel (490/32.2)
$\xi$	-	Water particle displacement (Horizontal)
$\zeta$	-	Water particle displacement (Vertical)
$\mu$	-	Coefficient of soil friction
$\beta$	-	Dimensionless tension
$\sigma_c$	-	Characteristic stress
$\sigma_m$	-	Maximum dimensionless stress
$a_x$	-	Water particle accelerations (Horizontal)
$a_z$	-	Water particle accelerations (Vertical)
$A_T$	-	Axial tension
$C$	-	Wave Celerity
$C_s$	-	Remolded cohesive shear strength
$C_D$	-	Hydrodynamic drag coefficient
$C_q$	-	Group velocity
$C_L$	-	Hydrodynamic lift coefficient
$C_M$	-	Hydrodynamic inertia or mass coefficient
$d$	-	Water depth
$du$	-	horizontal water particle acceleration over pipe
$D$	-	Pipe outside diameter

$D_i$	-	Pipe internal diameter
$D/W_t$	-	Pipe-diameter/wall thickness ratio
$E$	-	Elastic modulus
$EI$	-	Pipe stiffness
$f_n$	-	Natural frequency of the pipe span
$f_s$	-	Vortex-shedding frequency
$F_D$	-	Combined drag force
$F_i$	-	Inertia force
$F_L$	-	Combined lift force
$F_r.$	-	Friction resistance force between the pipe and the seabed
$g$	-	Constant value of gravity
$H$	-	Significant wave height
$H_o$	-	Deepwater wave height
$L$	-	Wave Length
$L_c$	-	Characteristic length
$L_o$	-	Deepwater wave length
$L_s$	-	Span Length
$M$		Combined mass of the pipe and added mass around the pipe per unit length of pipe
$M_a$	-	Pipe unit mass
$M_D$	-	Displaced mass
$N$	-	Normal force
$p$	-	Subsurface pressure
$Re$	-	Reynolds number
$S$	-	Strouhal number
$SG$	-	Specific gravity
$SG_1$	-	Lower range of pipe specific gravity
$SG_2$	-	Upper range of pipe specific gravity
$SG_C$	-	Specific gravity (during construction)
$SG_o$	-	Specified gravity (during operation)
$SG_{float}$	-	Specified gravity (to float the pipeline)
$SG_{sink}$	-	Specified gravity (to sink the pipeline)
$t$	-	Time (0 second is used for severe oceanographic condition)
$T$	-	Average wave period

$u$	-	Water particle velocity (Horizontal)
$U$	-	Flow velocity in boundary layer
$U_e$	-	Effective horizontal water-particle velocity over pipe height
$U_o$	-	Measured/calculated horizontal particle velocity at height $y_o$ ,
$\nu$	-	Kinematics viscosity of the fluid about $1.0 \times 10^5$ ft <sup>2</sup> /sec for sea water
$V$	-	Flow velocity
$w$	-	Water particle velocity (Vertical)
$W$	-	Submerged weight of the pipe and the weight of the contents
$W_a$	-	Pipe unit weight in air
$WT$	-	Pipe wall thickness
$z$	-	computational oceanographic height

**LIST OF ACRONYMS**

2D	-	Two Dimensional
3D	-	Three Dimensional
ACM	-	Accumulative Cost Map
AIM	-	Asset Integrity Management
ANSI	-	American National Standard Code
API	-	American Petroleum Institute
ASCE	-	American Society of Civil Engineers
ASCII	-	Amsterdam Subversive Center for Information Interchange
ASE	-	Average Standard Error
ASME	-	American Standard for Mechanical Engineering
AUV	-	Autonomous Underwater Vehicle
BS	-	British Standard
CAD	-	Computer-Aided Design
CASE	-	Computer-Aided Software Engineering
CWD	-	Cost-Weighted Distance
CEOM	-	Centro Oceanologico Mediterraneo
CFD	-	Computational Fluid Dynamics
CIC	-	Cloud-In-Cell
COLOS	-	Conceptual of Learning Sciences
CP	-	Communication Plan
DBF	-	Dbase File
DBMS	-	Database Management System
DCM	-	Discrete Cost Map
DGPS	-	Differential Global Positioning System
DHSS	-	Dual Head Scanner Sonar
DNV	-	Det Norske Veritas
DTM	-	Digital Terrain Model



DVS	-	Digital Video System
E-R	-	Entity-Relationship
EPI	-	External Pipeline Inspection
ESDA	-	Exploratory Spatial Data Analysis
ESRI	-	Environmental Science Research Institute
GA	-	Geostatistical Analyst
GB	-	Gigabyte
GEOPIG	-	Geometry Pig
GIS	-	Geographic Information System
GPS	-	Global Positioning System
GUI	-	Graphic User Interface
HCA	-	High Consequence Area
HRTO	-	Hydrographic Research and Training Office
IBP		Instituto Brasileiro de Petróleo e Gás / Brazilian Petroleum and Gas Institute
IEEE	-	Institute of Electrical and Electronics Engineers
IHOCE	-	International Hydrographic & Oceanographic Conference & Exhibition
ILI	-	In-Line Inspection
IMP	-	Integrity Management Plan
IPI	-	Internal Pipeline Inspection
LCP	-	Least Cost Path
LES	-	Large Eddy Simulations
LOOP	-	Louisiana Offshore Oil Port
LSD	-	Limit States Design
MB	-	Megabyte
MCP	-	Management of Change Plan
MSC	-	Meteorological Service of Canada
OC	-	Optimal Corridor
OCM	-	Optimal Corridor Map
OMAE	-	Offshore Mechanics and Arctic Engineering
OR	-	Optimal Route
OSIF	-	Offshore Soil Investigation Forum
PDF	-	Portable Document Format

PETRONAS	-	Petroleum National Berhad
PKT	-	Packet format
PP	-	Performance Plan
PSI	-	Pounds per Square Inch
PTS	-	Petronas Technical Standard
PTTC	-	Petroleum Technology Transfer Council
PWG	-	Pipeline Working Group
QCP	-	Quality Control Plan
RAM	-	Random Access Memory
RANS	-	Reynolds Averaged Navier-Stokes
RMS	-	Root Mean Square
ROV	-	Remotely Operated Vehicle
SDSS	-	Spatial Decision Support System
SIGSA	-	Sistemas De Informacion Geographica, S.A.
SMYS	-	Specified Minimum Yield Strength
SPIM	-	Submarine Pipeline Integrity Management
SSS	-	Side Scan Sonar
SWL	-	Still Water Level
TIF	-	Tag Image File
TV	-	Television
TXT	-	Text File Format
ULCD	-	Ultrasonic Crack Detection
UML	-	Unified Modeling Language
USBL	-	Underwater Short Base Line
USGS	-	United State Geological Survey
VBA	-	Visual Basic for Application
VHS	-	Virtual High Storage
VTS	-	Video Tracking System
XLS	-	Microsoft Excel Workbook (Microsoft Excel 2002)

**LIST OF APPENDICES**

<b>APPENDIX</b>	<b>TITLE</b>	<b>PAGE</b>
A	3D Maps of Least Cost Path	161
B	Stratigraphic Maps	162

## **CHAPTER 1**

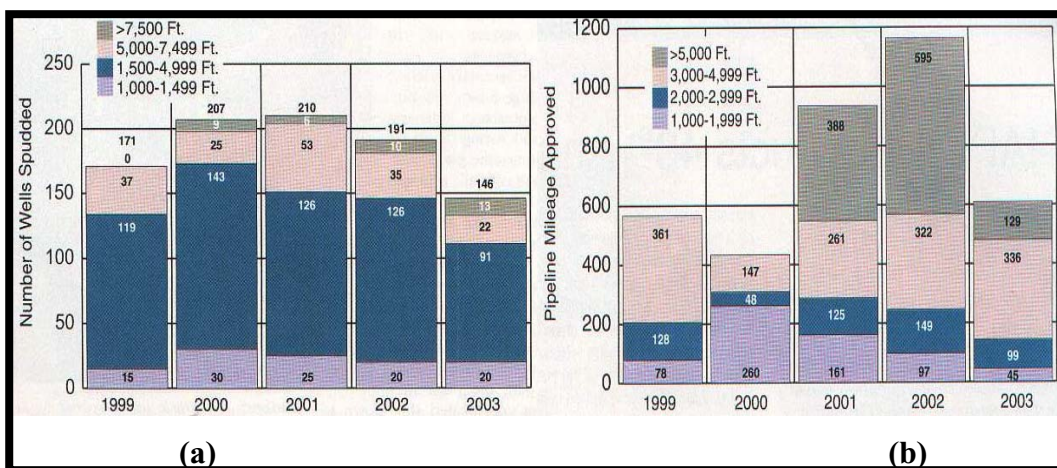
### **INTRODUCTION**

#### **1.1 Background**

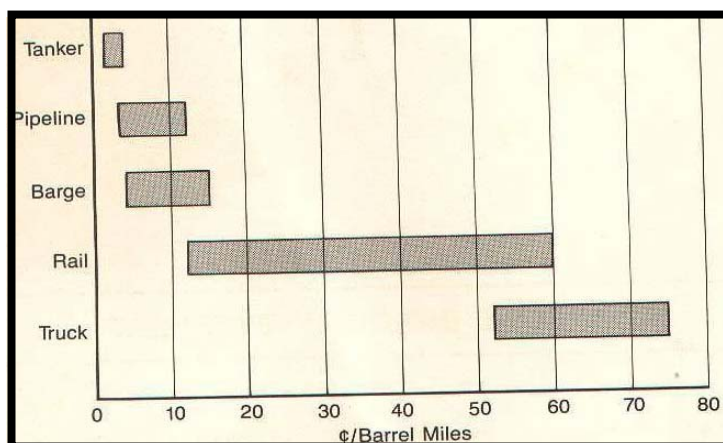
In recent times, man's inexorable demand of petroleum products has intensified the search for oil and gas in regions of the world which hitherto were unexplored. This has led to the development of petroleum resources in offshore areas which are especially harsh due to deep water and/or the severity of prevailing climatic conditions imposed by high winds, stormy seas and low temperatures as described in Figure 1.1a. In many cases, submarine pipeline is the preferable solution for oil and gas industry to transport the crude, either from offshore platforms to onshore terminals as shown in Figure 1.1b.

The investigations that were carried out by Oynes (2004), Robertson, et al (2004), and Kennedy (1984) proved that, oil and gas pipeline systems are remarkable for its efficiency and low transportation cost as shown in Figure 1.2. Networks of interlinking pipelines have also materialised in several offshore regions to enhance the development of marginal fields and mitigate some of the risks arising from the possible failure of singular pipelines (Mare, 1985). Evidence suggests that the pace of recent developments will continue as onshore reserves of oil and gas

diminish, with the result that submarine pipelines will become extremely important to the arteries in an increasingly energy-hungry world (Oynes, 2004; Robertson, et al, 2004; and Mare, 1985).



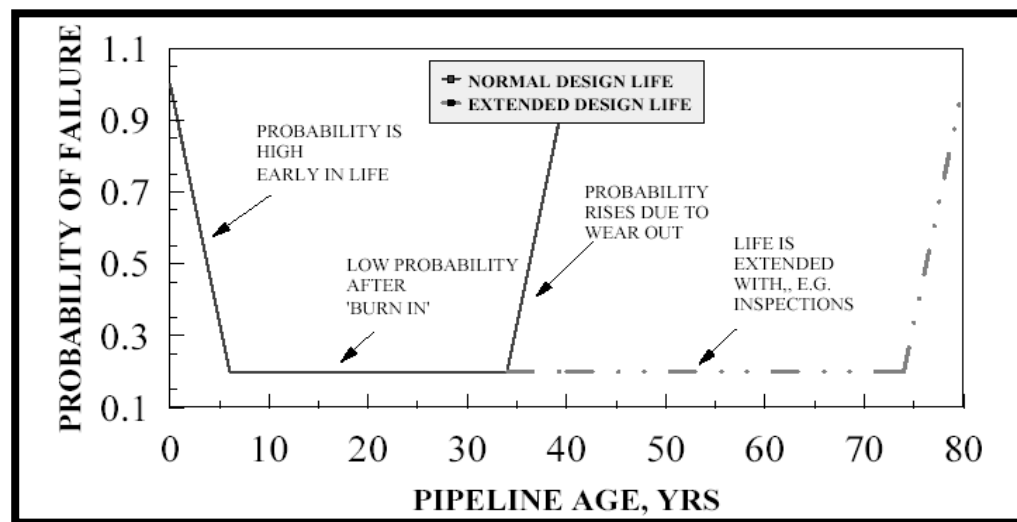
**Figure 1.1:** Submarine pipeline development in Gulf of Mexico (1999-2003): (a) Deepwater exploratory and development wells drilled subdivided by water depth; and (b) Deepwater pipeline mileage approved 1999-2003, subdivided by water depth (source: Oynes, C., 2004)



**Figure 1.2:** Petroleum transportation costs  
Source: Kennedy, J. L., 1984

In general, the growth of deepwater exploration is particularly significant to the pipeline market (Robertson, et al., 2004) due to (a) deepwater means longer lengths of product because not only is the distance from the seabed to the surface greater, but the project site also tends to be farther from shore, so export lines need to be longer; and (b) the technical challenges presented by deepwater conditions means that pipeline design, manufacture, installation and operation become more troublesome and more expensive, making deepwater a high-risk, high value market.

At present, various techniques of submarine pipeline routing design have been established as to ensure the maximum safety to the pipeline. In general, submarine pipeline routing design requires careful examinations on hydrodynamic stability analysis (installation and operating lifetime), soils liquefaction analysis (safe range of pipe specific gravity), soil movements analysis (loads imposed on pipeline), pipe buckling analysis, thermal load / flexibility analysis, pipe lay analysis, route selection, profile extraction and so forth.



**Figure 1.3:** 'Bath tub' failure curve and extending pipelines' lives

*Source: Penspen Integrity, Inc., 1998*

Meanwhile, an investigation that was carried out by Jones and Hopkins (2002) shows that engineering plant follow a 'bath tub' type failure probability curve shown in Figure 1.3. This curve shows that during a structure's design life the highest failure probability is when the structure is new, or when it is old. This curve applies to automobiles, aircraft, etc., and pipeline engineers will agree with this result; pipelines have high failure rates early in life (e.g., hydrostatic testing) and later in life (due to corrosion) (Jones and Hopkins, 2002; Biagiotti and Guy, 2003). An adequate parameters design and inspection of a pipeline will help to extend the low probability portion of Figure 1.3 to 80 or even 100 years old.

Geographic Information System (GIS), is a computer-based system that is capable of assembling, storing, manipulating, and displaying geographically referenced information. GISs provide analytical capabilities that can greatly help in submarine pipeline design and inspection purposes. The benefits of such analysis will be appreciated by the pipeline engineers, who can now concentrate on analysing his results as opposed to spending time compiling the results. This study deals primarily with assembly of various datasets into a common, compelling, efficient, user-friendly and interesting visualization GIS system for submarine pipeline routing design and inspection purposes.

This chapter outlines the key notes of this study including research problems statement, purpose, objectives, scope as well as the benefits of this study, The following Chapter (*see Chapter 2*) provides an overview of hazardous conditions and basic criteria of submarine pipeline routing design, such as hydrodynamic forces, pipe-soil stability, etc. Chapter 3 illustrates the needs as well as the current technologies of submarine pipeline inspection (e.g., SSS, ROV and so forth). The methodology of this study is presented in Chapter 4. The capabilities of GIS technology in submarine pipeline routing design are evaluated in Chapter 5, section 5.2 and Chapter 5, section 5.3 analyzed the implementation of GIS in submarine pipeline inspection purposes. The conclusion and recommendations for future works are presented in Chapter 6.

## 1.2 Problem Statement

Routing design of a submarine pipeline is a complicated business because of all the parameters that must be prudently considered. Large numbers of effort have been made to ensure the maximum safety and improve the longevity of the pipeline operating lifetime (*the summary of relevant researches are available in section 1.8*). For a successful submarine pipeline design operation, various techniques and tools are used. As a result, diverse datasets are obtained, such as oceanographic data, bathymetry data, magnetometer, soil sample, sub-bottom profiler and so forth.

Additionally, various datasets are obtained from submarine pipeline inspection surveys (*the detail description is available in Chapter 3*). The Internal Pipeline Inspection (IPI) data consists of attributes such as corrosion areas of the internal pipeline wall, related to the distance from nearest pipe weld (given the geographical locations of the pipe weld / field joints, absolute positions can then be derived for the internal corrosion area). The External Pipeline Inspection (EPI) data consists of attributes, such as debris on the seabed, whose geographical position is known either via interpolation of Side Scan Sonar (SSS) imagery or Remotely Operated Vehicle (ROV) positioning fixing (Riemersma, 2000).

Generally speaking, more data will produce better analysis results. However, most of these datasets are deposited into files and databases where they sit in their separate and unique formats. Hence, the information in these datasets often go un-visualized, un-interpreted and hence do not effectively contribute to the scientific understanding or help pipeline engineers in submarine inspection or routing design operation. Obviously, it is meaningless if the industry managed to survey or collect the required datasets in high precision, but could not efficiently manipulate or manage these datasets for maximum usage.



To overcome this problem, the conventional Database Management Systems (DBMS) are not practical as most of these datasets are not geographically referenced. Traditionally, the pipeline engineers will take time to analyse these datasets for decision making from several separated systems where these datasets are stored in. Evidently, this is inefficient to the industry and even worse is that analysis results may not be accurate as the required information are not integrated.

As the solution for efficient decision-making, oil and gas industries are recently seeking for the information system which is capable in:

- Assembling, storing, manipulating, displaying and analysing the industrial datasets. In this case, the system must be able to manipulate all the required datasets for submarine pipeline routing and inspection activities.
- Able (or at least able to be customised) to integrate with other hardware or systems in order to be upgraded for onboard processing or fulfil the future requirements.
- Comprise various analytical functions that would meet the engineers' needs in their daily operation. In this case, the system must be able to identify the High Consequence Areas (HCAs) to a submarine pipeline, and define the most appropriate path for the pipeline to be installed.
- Security protection to ensure the reliability of the system as well as the confidentiality of the datasets.

### **1.3 Research Purpose**

Seas and oceans contain a spaghetti-like labyrinth of submarine pipes and cables that criss-cross the seafloor, providing fuel and communications throughout the world. The condition and welfare of these pipelines remain the responsibility of the pipeline's asset owner. Usually, they will evaluate or design the pipeline route away from all the harmful hazards and minimize the hydrodynamic forces to these pipelines. Besides that, these pipelines are carefully inspected, in order to improve its longevity as well as to minimize its impact to the environment.

For the convenience of the pipeline engineers, this study aims to implement the GIS capabilities into submarine pipeline routing and inspection activities, that is to assemble various datasets into a common, compelling, efficient, user-friendly and interesting visualization system, with the aim of providing appropriate information to pipeline engineers for efficient decision-making.

### **1.4 Research Objectives**

The objectives of this study are:

- To integrate the related datasets for submarine pipeline design and inspection purposes into a geodatabase system.
- To integrate the DVS (Digital Video System) dataset into ArcGIS-ArcMap environment for efficient pipeline inspection analysis.
- To customize a proper graphic interface for the conveniences of end user.

## 1.5 Research Scope

This study focuses mainly in the implementation of GIS technology as a Spatial Decision Support System (SDSS) for submarine pipeline routing design and inspection purposes. The basic criteria in submarine pipeline routing design and inspection activities would be taken into account in this project. However, this study is limited as follows:

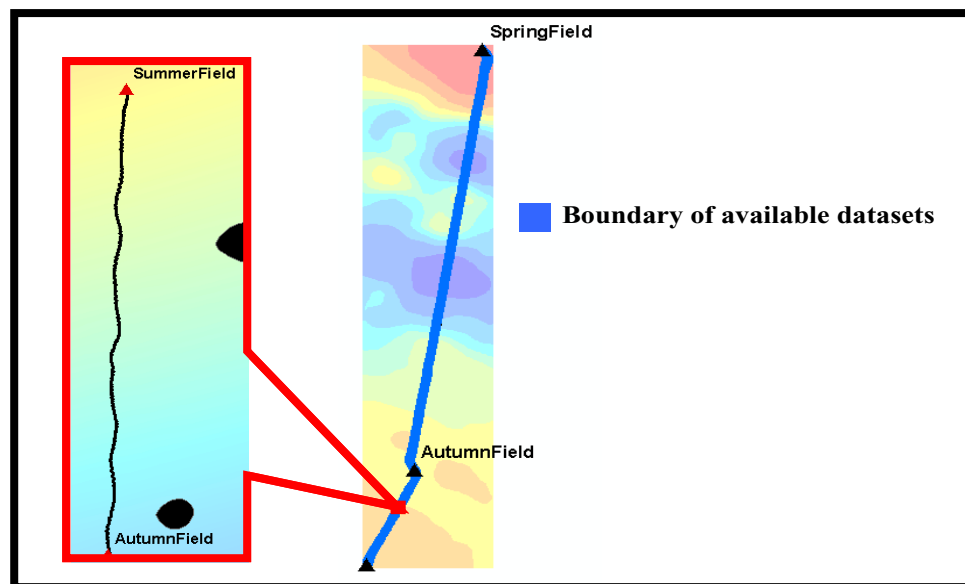
- **Hardware, software and extension**, the hardware and software that had been used to achieve the objectives of this study are listed in Table 1.1. Thus, this study has been proceeded based on the available functionality of these hardware and software.

**Table 1.1:** Hardware and software

Hardware		Operating System	
▶ Intel Pentium III		▶ Window XP	
▶ 128 Mb RAM			
Software			
▶ NETmc 3Head Player Tool	▶ ArcGIS-ArcInfo 8.3	▶ RockWorks 2004	
▶ Abode Acrobat Professional 6.0	▶ Microsoft Excel 2003		
Extension			
▶ VideoDRS	▶ 3D Analyst	▶ Geostatistical Analyst	
▶ Spatial Analyst			

- **Types of pipeline**, there are four general classifications of submarine pipelines as outlined in Table 2.1 (*see Chapter 2, section 2.2*). But, this study focuses only in the routing design of gathering lines (interfiled lines). The criteria of routing design for other types of submarine pipeline (e.g., flowlines / intrafield lines and loading lines) are excluded from this study.

- Study area**, this study attempts to analyse a new proposed pipeline from SpringField platform to AutumnField platform and to inspect the existing pipeline between SummerField platform and WinterField platform (Figure 1.4), based on the available datasets provided by the data suppliers. In other words, the routing design criteria, environmental constraints and available datasets for other offshore platforms would be excluded from this study. However, all the details (e.g., name of the platforms, pipelines) of this selected area has been edited from this report due to the datasets confidentiality (as stated in the agreement that attached in this report).



**Figure 1.4:** Study area

- Data**, this study is limited to some datasets as listed in Table 1.2. Petroliam National Berhad (PETRONAS) agreed to release 3 pipeline survey reports, which consist the datasets of bathymetry survey, Side-Scan Sonar (SSS), sub-bottom profiler and so forth. Besides that, MAPIX Technologies Ltd supplies the DVS files and the relevant software. And, Dr. Sofia Caires from the Meteorological Service of Canada (MSC) provides the requested monthly oceanographic datasets from year 1960 to 2000. This study has been carried out based on these datasets and other datasets are neglected from the study due to the data inaccessibility.

**Table 1.2:** Available datasets

<b>Item</b>	<b>Data</b>	<b>Source</b>	<b>Year/ Period</b>	<b>Acquisition</b>	<b>Accuracy</b>
1	Bathymetry Dataset		1996	Atlas Deso 20 Dual Frequency Echo Sounder System	overall accumulative accuracy is $\pm 0.55$ metres*
2	SSS Imageries		1996	EG&G 260 Image Correcting SSS system, complete with an EG&G 272TD dual frequency (100 and 500 kHz)	approx 5m in size and 15m in position*
3	Sub-Bottom Profiler Dataset		1996	Geopulse Surface-Towed Profiling System	0.2 m- 0.6m*
4	Soil & Gravity sampling		1996	Benthos-type Gravity Corer	$\pm 1$ cm with maximum distance for two consecutive locations not exceeding 5km*
5	Oceanographic Dataset	MSC	1960-2001		$\pm 10$ cm §
6	ROV/DVS Survey Datasets	MAPIX Technologies Ltd	1999		

Note:

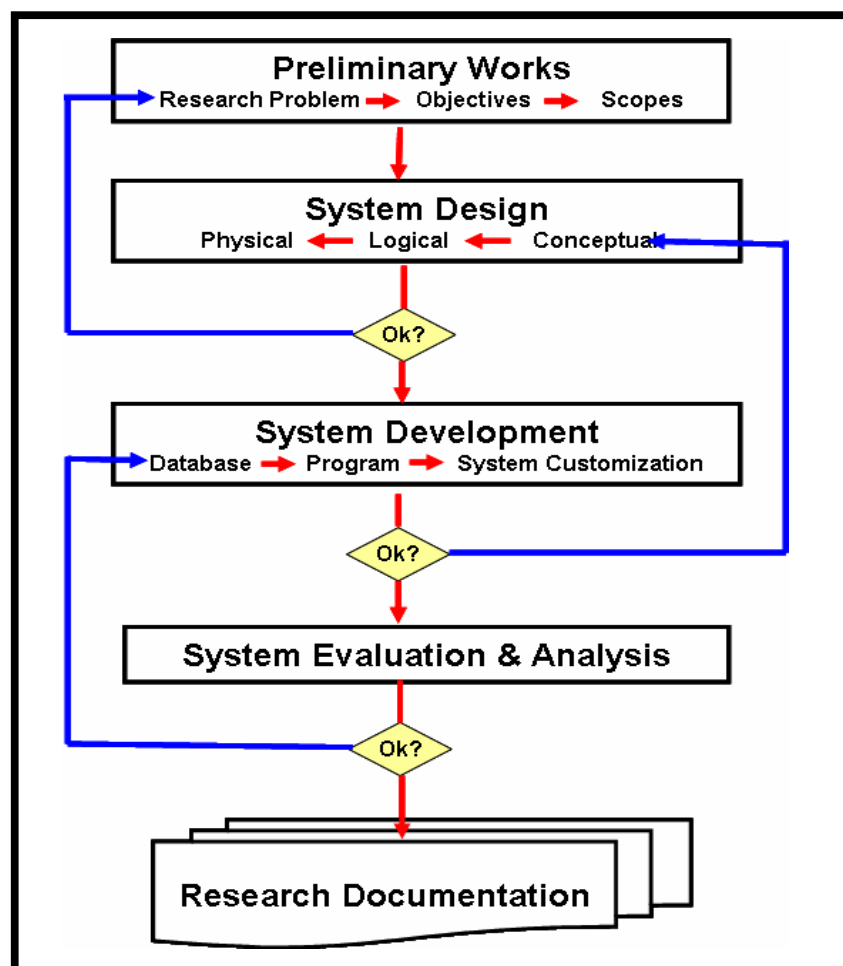
\* summary from pipeline survey report

§ personal interview with the relevant parties

- **Routing design constraints**, although there are several constraints (*as outlined in Chapter 2, section 2.2*) that must be considered for a successful submarine pipeline routing design, this study focuses mainly in the environmental constraints involved in submarine pipeline routing. Other design constraints like the methods of construction; operation and maintenance are excluded from this study.
  
- **Assumption**, due to the data inaccessibility, some assumptions have been made in this study:
  - ⇒ the size of purpose pipeline (from Springfield platform to AutumnField platform) is assumed consistent with 1m diameter and 5cm thickness.
  
  - ⇒ the average direction of wave is assumed normal or parallel to the proposed pipeline axis.
  
  - ⇒ the velocity and acceleration terms are typically evaluated at 1m above the seabed based on standard wave theories as described in Table 2.4 (Mousselli, 1981). Hence, a boundary layer is then assumed from 1m above the seabed to the seabed where the velocity terms vanish during the hydrodynamic analysis in this study.
  
  - ⇒ the G-Value, fill percent and soil density must be assigned with numeric values for each soil types in RockWorks2004 to identify each soil types in lithology models. However, these values are unsure in this study. Thus, the recommended setting has been used to assign all the fill percent as 100%, all soil density as 1 and G-Value of '1' for the uppermost class of soil and increment the integer by '1' for each next soil type (RockWare, Inc., 2004).

## 1.6 Overview of Research methodology

Generally, the methodology of this study can be divided into five phases as shown in Figure 1.5. The first part would cover the preliminary works such as assessment of the research problem, research objectives, research scopes identification as stated previously in sections 1.2, 1.3, 1.4 and 1.5. Besides that, the literature review of the relevant studies would be carried out at the earliest stage of this study to ensure the practicalities of this study (*see section 1.8 or Chapter 2 & 3 for detail description*).



**Figure 1.5:** Overview of research methodology

The second step of this study accounts for system design (*for more detail, see Chapter 4, section 4.3*) which consists the conceptual design, logical design and physical design of the system. The system development would be carried out with the selected tools as soon as the design plans are completed in the third phase (*see Chapter 4, section 4.4*). The fourth part of this study focuses mainly on system evaluation and result, that include the application of pipeline routing with spatial analysis (*see Chapter 5, section 5.2*); and simultaneously access multiple channels of pipeline inspection video in ArcGIS-ArcMap (*see Chapter 5, section 5.3*) according to its geographic features. Eventually, the research documentations are compiled in the fifth phase for future reference.

### **1.7 The Benefit of this Study**

GIS is explicitly designed to assemble, manipulate and analyse geographically referenced information, as the support system for decision-making. The following are potential benefits that can be expected upon implementing GIS technology into submarine pipeline routing and inspection purposes:

- Measurable increases in productivity during the creation, maintenance, and seeking/verifying of geographic-related information. A GIS automates routine, repetitive tasks, leaving more time for pipeline engineer to focus on analysis and problem solving.



- Centralized database to provide a single source of pipeline related information. Centralization will enable faster retrieval and selective modification of information and provide more consistent operations, including standardization, since all users will have access to the same current data.
- Improved responsiveness to inquiries through increased information accuracy, improved response time, and ability to quickly analyze larger volumes of data.
- Capability to produce specialty maps at any desired scale to improve emergency preparedness and accelerate work processes (e.g., processing of permits).
- More effective analysis of geographic-related data that greatly enhance and expedite management's decision-making capabilities (e.g., assisted planning of optimal routes)

## **1.8 Related Works**

In order to improve the works of submarine pipeline routing design and inspection, various researches had been carried out around the world, which can mainly be categorized as below:

### **1.8.1 Standard Revisions of Submarine Pipeline**

Several regulations or standards had been published and widely implemented to ensure the maximum safety to submarine pipeline. For example, American Petroleum Institute (API) Recommended Practice 111, 2<sup>nd</sup> Edition Nov.93 and British Standard (BS) BS8010: Part 3 1993 Section 4 had been published refers specifically to submarine pipeline routing selection. Det Norske Veritas (DNV) 1996, Page 18, Section 3 and DNV Classification Notes – No. 30.4 refer specifically to soil investigation for pipelines. Meanwhile, API RP5L emphasizes the material aspect than pipeline design guideline against environmental loading (Mousselli, 1981; Mare, 1985; and Karal, 1987).

Over the years, these standards or regulations had been widely used as guidance for design, materials, fabrication, installation and operation of submarine pipeline. However, the pipeline industry has in recent years experienced a growing focus on cost reduction, resulting in innovative design approaches and optimized construction methods in increasingly deeper and rougher waters (Pradnyana, et al, 2000). Hence, these regulations or standards may no longer be applicable and revision must be carried out.

To do so, the Pipelines Working Group (PWG) of the Offshore Soil Investigation Forum (OSIF) has been established. The forum is an informal grouping of oil company geotechnical departments, geotechnical drilling vessel operators, geotechnical contractors and consultants, that has been meeting annually since 1983, to exchange experience and ideas; standardize the procedures, equipment; and continuously improve all aspects of offshore soil investigations.

Besides that, Roberts (2004), reviews some of the major legislative and regulatory changes concerning the integrity of transmission pipelines located in High Consequence Areas (HCAs). Sylvester (2004), review the elements of an Integrity Management Program in American Standard for Mechanical Engineering (ASME) B31.8S, which includes Integrity Management Plan (IMP), Performance Plan (PP), Communication Plan (CP), Management of Change Plan (MCP), and Quality Control Plan (QCP). Meanwhile, Penspen Integrity (1998), studied the possibility of the Limit States Design (LSD) used to design a pipeline above 80% Specified Minimum Yield Strength (SMYS).

From the existing pipeline design, Pradnyana, et al (2000) tried to do recalculation using DNV 1981, DNV 1996, DNV 1999, and DNV 1999 (revision). Recalculation has been done by optimizing wall thickness (where internal pressure is kept constant), and optimizing internal pressure (where wall thickness is constant). According to Pradnyana, et al (2000), the results show that the pipeline wall thickness can be reduced by using DNV 1996, DNV 1999 and DNV 1999 (revision), and the most reduction in wall thickness was found when DNV 1999 (revision) is used. And the ultimate internal pressure can be raised by using DNV 1996, DNV 1999 and DNV 1999 (revision).

### 1.8.2 Computational Fluid Dynamics (CFD) Solutions

In the most severe case, the scour hole and resultant forces on the structure may cause failure. In other cases, pipelines, rubble-mound structures, or submerged mines may be enveloped by the scour hole and eventually buried (Summer, et al., 2001). For this reason, the hydraulic and ocean engineers had shown significant interest in predicting the scour of sediment around bridge piers and submarine pipelines.

A number of investigations had been carried out to analyse the scour around the vertical structures, such as steady current investigation by Laursen (1963); Lim & Cheng (1998); and Melville & Chiew (1999); wave investigation (Summer, et al., 1992); wave and current investigation (Summer and Fredsøe, 2001); field investigation include Bayram and Larson (2000). Besides that, investigation of the scour for the horizontal objects has primarily occurred in the last three decades (Kjeldsen, et al., 1973, and Mao 1986).

In the year 1988, the Cloud-In-Cell (CIC) model had been used by Summer et al, (1988) to simulate laboratory observations of the cylinder wake. Followed by that, the efforts to model the pipeline scour process have ranged from potential flow theory (Li and Cheng, 1999) to more complicated turbulence closure models with the Reynolds Averaged Navier-Stokes (RANS) equations (Van Beek and Wind, 1990).

More recently, Li and Cheng (2001) solved the RANS equations with a Large Eddy Simulations (LES) turbulence scheme. Besides that, Brørs (1999) utilizes a non-hydrostatic finite element scheme to solve the RANS equations with a  $k-\epsilon$  turbulence closure scheme. The morphologic evolution is accomplished with a finite difference bedload transport model. However, the velocity variations downstream of the cylinder

were slightly under-predicted. The morphology module was evaluated with Mao's (1986) scour experiments. Overall agreement between the laboratory data and the model for both the shape and depth of the scour hole is good, although the simulated equilibrium depth was less than the final depth reached in the laboratory (Smith, 2004).

### **1.8.3 Enhancement of Structural Stability**

As pipeline installations moved into deep water, the problems of pipeline collapse caused by the increased hydrostatic pressure became significant. Pipe collapse depends on many factors, including the pipe-diameter/wall thickness ratio ( $D/W_t$ ), stress-strain properties, initial ovalization (out of roundness), hydrostatic pressure, and bending moment in the pipe (Mousselli, 1981).

To overcome these problems, new methods, tools and equipments are being developed to enhance the structure of submarine pipeline. Dawans, et al, (1986) had carefully evaluated the design and materials considerations for high pressure flexible flowlines.

Meanwhile, various methods are introduced to protect the pipeline from hazardous conditions (*see Chapter 3, section 3.5*), this include concrete coating (Bergan & Mollestad, 1981; and Palmer, 1985); grouting (COLOS, 1983), sandbags, jack-ups, gravel dumping (Melegari & Bressan, 1990) and etc (*see Chapter 3, section 3.5 for detail description of these protection methods*).

Furthermore, several continuous or non-continuous techniques for internal corrosion monitoring has been implemented, such as coupons, iron counts, ultrasonic radiographic calliper, magnetic pigs, electrochemical noise, polarisation resistance and so forth (*see King & Geary, 1985, for a complete summary of internal corrosion monitoring techniques*).

Besides that, numbers of advance equipment and technology are developed and; directly or indirectly contribute to the stability of submarine pipeline. For example, jet barge, fluidizing equipment to trench a pipeline (Mousselli, 1981); and submarine pipeline inspection with Side Scan Sonar (Cheah, 2003; Kamaruddin; 2003; Petillot, et al, 2002 and Rainbow, et al, 1985), ROV/AUV (Thabeth, 2004; Kamaruddin; 2003; Mahmud & Chai 2003a; Petillot, et al, 2002 ), pig (Elmer, 2004; Horton, 2004; Olson, et al, 2004; Agthoven, 2003; and Beuker & Brown, 2003); FluoroTrack sensor (Thabeth, 2004); and some other Ultrasonic Crack Detection (ULCD) tools (Meade and Uzelac, 2004).

#### **1.8.4 Spatial Decision Support System (SDSS)**

Routing design of submarine pipeline is a complicated business because of all the parameters that must be considered. To analyse the optimal route of submarine pipeline, not only the pipeline scour process (*see section 1.8.2*) has to be simulated, various criteria, regulations or standards must also be achieved (*see section 1.8.1 and Chapter 5, section 5.2*). Furthermore, new methods, tools and equipments are being developed to enhance the structure of submarine pipeline to oppose the severe conditions in ocean environment (*as described in section 1.8.*). However, in certain cases these are not flexible and cost-effective.

For these reasons, pipeline engineers seek for the solution which is capable to consider all the routing constraints into a systems analysis. Since, most of these constraints are geographically related, GIS has taken place as the Spatial Decision Support System (SDSS) with its distinct spatial analytical capabilities. Various GIS applications had been developed for routing design, such as defining a consensus method for finding preferred routing (McCoy & Johnston, 2001); identifying the most preferred route for power line (Berry, 1996); analyse the shortest and safest voyage (Chai, 2002); finding an alternative access road to the new school site (McCoy and Johnston, 2001); designate the optimal route for submarine cable routing (Joseph & Hussong, 2005; and Osborne & Abbott, 2000); determine the alternative pipe routes (Berry, et al, 2004; Wong, 2004; LoPresti & Miller, 2004, and Yusof & Baban, 2004).

Data integration is a critical process in an Integrity Management Plan (IMP). It will still take several years to have a fully implemented pipeline integrity process. GIS technology has already proven itself as a key-element to successfully manage the data necessary for a pipeline integrity management program (Palmer, 2004; and Mahmud & Chai, 2003b), such as wave modelling (Yaakob, 2003); internal inspection with PIGs (*Porter & Parsons, 2000*; and Czyz, et al, 2000); sonar scanned images (Rasmussen, 1998) and external video tracking system (Rasmussen, 1998).

The focus of this study is on the fourth, that is to implement the true GIS capabilities in submarine pipeline routing design and inspection purposes. To do so, it requires (1) to gather various datasets regarding pipeline routing design & inspection; (2) assembling, storing & manipulating these datasets in a geodatabase system; (3) analyse the optimal pipeline route by taking into account the hazardous conditions (*see Chapter 2, section 2.8*); (4) perform a georeference DVS for submarine pipeline inspection in ArcGIS-ArcMap environment; and (5) customizing a common, compelling, efficient, user-friendly interface for the convenience of end users.

## **1.9 Summary**

Submarine pipelines play an important role in offshore hydrocarbon transportation. In order to ensure the smoothness of offshore exploration activities and the stability of marine biology, a large number of efforts have been made to study the issues which are relevant to submarine pipelines, particularly in its routing design and inspection techniques.

The objective of this study is to implement the GIS capabilities into submarine pipeline routing and inspection activities. This study aims to assemble various datasets into a common, compelling, efficient, user-friendly and interesting visualization system to provide the appropriate information for efficient decision-making to pipeline engineers.



## BIBLIOGRAPHY

- Abbott, M. B., Bryndum, M. B. and Colquhoun, R. S. (1985). Pipeline Lay-Stress Analysis. In: Mare, R. F. dela, (1985). Advances in Offshore Oil and Gas Pipeline Technology. Gulf Publishing Company, United Kingdom. Pp15-28.
- Agthoven, R. V. (2003). Inspection of unpiggable pipeline and risers, experiences, history and the future of cable-operated ultrasonic pigging. In: Conference of Pipeline Inspection and Integrity management for Oil an Gas. Aberdeen, Scotland, September 22-23, 2003.
- Atkins Planning (1979). The Market for underwater inspection of offshore installations in the next ten years. Report UR13, CIRIA Underwater Engineering Group, London.
- Bayram, A. and Larson, M. (2000). Analysis of scour around a group of vertical piles in the field. Journal of Waterway Port and Coastal Engineering. September/October 2000, Issue 5, 126(4):215-220.
- Bea, R. G.(1985). Geotechnical Considerations in Submarine Pipeline Design. In: Mare, R. F. dela, (1985). Advances in Offshore Oil and Gas Pipeline Technology. Gulf Publishing Company, United Kingdom. Pp1-15.
- Bergan, P. G. and Mollestad, E. (1981). Impact-response behaviour of Offshore Pipelines. In: *Proceedings Thirteenth Annual Offshore technology Conference, 9-16 March. Houston*, Paper OTC 4065.
- Berry, J. K. (2003). Traditional Approaches can't Characterize Overland Flow. GeoWorld. November 2003, Vol.16 (11): 20-21.

- Berry, J. K., King, M. D. and Lopez, C. (2004). Online paper entitled: “*A Web-Based Application for Identifying and Evaluating Alternative Pipeline Routes and Corridors*” The specified format is available at [www.innovativegis.com/basis/Present/GITA\\_Oil&Gas\\_04/](http://www.innovativegis.com/basis/Present/GITA_Oil&Gas_04/)
- Berry, J. K. (1996). *Map Analysis*. USA: BASIS Press. The specified format is available at <http://www.innovativegis.com/basis/MapAnalysis/Default.htm>
- Beuker, T. and Brown, B. (2003). Axial Flaw Detector Pig Design Improves Pipeline Integrity. *Pipeline & Gas Journal*. December 2003. 230(12):12-19.
- Biagiotti, S. F. and Guy, P. P. (2003). *Software and Inspection Advances in Pipeline Integrity Assessment*. Bass Trigon. United Kingdom.
- BJ Services Company. (2005). Online source: <http://www.bjservices.com>
- Bobbit, D. E. and Clemence, S. P. (1987). Helical Anchors: Application and Design Criteria. Proceeding 9<sup>th</sup> Southeast Asia Geotechnical Conference. Bangkok, Thailand, Vol. 1. pp. 105-120.
- Booth, B. (2000). *Using ArcGIS™ 3D Analyst*. USA:ESRI.
- Bouazza, A. and Finlay, T. W. (1990). Behavior of Anchor Reinforcement in Offshore Pipeline. In: Ellinas, C. P. (1985). *Advances in Subsea Pipeline Engineering and Technology*. Kluwer Academic Publishers. The Netherlands. Pg. 67-78.
- Brøns, B. (1999). Numerical modelling of flow and scour at pipelines. *Journal of Hydraulic Engineering*. May 1999, Issue 5. 125(5):511-523.
- Chai Beng Chung (2002). *GIS Application for Safe Vessel Navigation*. Universiti Teknologi Malaysia, Johor, Malaysia: Bsc Thesis.

- Chapman, P., Stevens, P., Wills, D. and Brookes, G. (1999). Visualizing Underwater Environments Using Multifrequency Sonar. *IEEE Computer Graphics and Applications*. Sept/Oct 1999, 19(5): 61-65.
- Cheah, S. H. (2003). Sonar Application and Interpretation. In: Offshore Surveying Awareness Seminar 2003 (OSAS 2003). Federal Hotel, Kuala Lumpur, Malaysia. 24&25 April 2003.
- Chopakatla, S. C. (2003). *A CFD Model for Wave Transformations and breaking in surf Zone*. The Ohio State University, Columbus, Ohio, USA: MSc Thesis.
- COLOS (Conceptual Learning of Society) (1983). Fabric Formworks and Grouting Offshore. Catalog and Operation Manual. Aberdeen.
- Colquhoun, R. S. and Thygesen, J. E. (1985). Pipeline Safety Analysis. In: de la Mare, R. F. *Advance in Offshore Oil & Gas Pipeline Technology*. Texas: Gulf Publishing Company. 175-196.
- Corbishley, T. J. and Luynenburg, R. W. (1985). Pipeline Span Detection, Assesment and Correction. In: de la Mare, R. F. *Advance in Offshore Oil & Gas Pipeline Technology*. Texas: Gulf Publishing Company. 143-152.
- Czyz, J. A., Pettigrew, C., Pino, H. and Gomez, R. (2000). Multi-Pipeline Grographical Information System Based on High Accuracy Inertial Surveys. In: Proceedings of IPC (International Pipeline Conference) 2000. ASME Paper No. IPC00-138. Calgary, October.
- Darbaghi, S. (1998). *Pipeline Integrity Management*. Houston, US: Petroleum Technology Transfer Council (PTTC).
- Dawans, F. A., Jarrin, J., Lefevre, T. O. and Pelisson, M. (1986). Improved Thermoplastic materials for Offshore Flexible Pipes. Offshore Technology Conference (OTC), May 1986. Huston, USA.

- Durand Y. and Stankoff A. (1978). Inspection of Buried Pipelines by Submersibles – Pipe Tracking and Pipe Logging Instrumentation. Proceedings 10<sup>th</sup> Annual Offshore Technology Conference, Huston, Vol I, Pg 207-216.
- Elmasri, A. R. & Navathe, S. (2000). Fundamentals of database systems. Addison-Wesley. New York.
- Elmer, R. (2004). Low-Mileage Line Benefits from Smart Pigging. Pipeline & Gas Journal. December 2003. 230(12):20-23.
- Evans, P. (2004). The Dawn of the Digital Age: How Digital Visual System Lower Costs and Improve Efficiency. Hydro INTERNATIONAL. September 2004, Vol. 8 (7), Pg, 6-9.
- Foresti, G. L. and Gentili S. (2000). A Vision Based System for Object Detection in Underwater Image. International Journal of Pattern Recognition and Artificial Intelligence, Vol 14(2):163-188.
- Glasgow, J., French, S., Zwick, P., Kramer, L., Richardson, S. and Berry, J. K.(2004). Online paper entitled: “A Consensus Method Finds Preferred Routing” The Specified format is available at :  
<http://www.geoplace.com/gw/2004/0404/0404pwr.asp>
- Gravesen, H. (1985). A Case in Pipeline Design. In: Mare, R. F. dela, (1985). Advances in Offshore Oil and Gas Pipeline Technology. Gulf Publishing Company, United Kingdom. Pp 227-262.
- Hansen, J. (1961). The Ultimate Resistance of Rigid Piles Against Transversal Forces. Danish Geotechnical Institute. Denmark.
- Hiltscher, G., Muhlthaler, W. and Smits, J. (2003). Industrial Pigging Technology: Fundamentals, Components, Applications. WILEY-VCH Verlag GmbH & Co. KGaA, Weinheim, German.

- Horton, S. L. (2004). Operators, Service Providers Need be Ready for ‘Guerrilla Warfare’. *Pipeline & Gas Journal*. January 2003. 231(1):40-43.
- Huseby, R. B. and Gundersen, H. R. (2005). Online article entitled: “Image Analysis of Pipelines”. The specified format is available at <http://www2.nr.no/enbis/papers/rimini-huseby.pdf>
- Hydro INTERNATIONAL (2004). Product Survey on Digital Video System. *Hydro INTERNATIONAL*. July/August 2004. Vol. 8 (6): 39-41.
- Jensen, J. J. and Pedersen, P. T. (1985). The Buckling of Submarine Pipelines. In: Mare, R. F. dela, (1985). *Advances in Offshore Oil and Gas Pipeline Technology*. Gulf Publishing Company, United Kingdom. Pp41-60
- Johnston, K., Ver Hoef, J. M., Krivoruchko, K. And Lucas, N. (2001). *Using ArcGIS Geostatistical Analyst*. USA: ESRI.
- Jones, D. G. and Hopkins, P. (2004). Pipeline Internal Inspection – What A Pipeline Operator Needs To Know. *The Sixth European And Middle Eastern Pipeline Rehabilitation And Maintenance Seminar And Exhibition*. 9-11 October. United Kingdom: Advanced Book Exchange Inc., 1-30.
- Joseph, D. and Hussong, D. M. (2005). GIS Analysis Tools in Submarine Cable Planning. *Hydro INTERNATIONAL*. January/February 2005. Vol. 9 (1): 6-9.
- Kamaruddin, S. (2003). Survey Requirements & Planning for Oil and Gas Industry. In: *Offshore Surveying Awareness Seminar 2003 (OSAS 2003)*. Federal Hotel, Kuala Lumpur, Malaysia. 24&25 April 2003.
- Karal K., (1987). Offshore Pipelines. In: Mazurkiewics, B. K., (1987). *Offshore Platforms and Pipelines: Selected Contributions*. Trans Tech Publications, Germany. Pg. 299-348.

- Kennedy, J. L. (1984). Oil and Gas Pipeline Fundamentals. PennWell Books. Tulsa, Oklahoma.
- King, R. A. and Geary, D. (1985). Controlling the Internal Corrosion of Subsea Pipelines. In: de la Mare, R. F. *Advance in Offshore Oil & Gas Pipeline Technology*. Texas: Gulf Publishing Company. 107-116.
- Kjeldsen, S. P., Gjørsvik, O., Bringaker, K. G., and Jacobsen, J. (1973). Local scour near offshore pipelines. In Proceedings 2<sup>nd</sup> International Conference. Port and Ocean Engineering under Arctic Conditions, Reykjavik, Iceland. Pp.308-331.
- Kokkinowrachos, K. (1987). Hydrodynamic Analysis of Offshore Fixed Platform. In: Mazurkiewics, B. K. (1987) *Offshore Platforms and Pipelines*. Trans Tech Publications, Germany. Pp 35-82.
- Laluna, R., Gravili, D. And Lino, G. (2004). Online poster entitle: "ARCHEOEGADI: A GIS for Marine Archaeological Survey in the Egadi Islands". The specified format is available: <http://www.conisma.it/incontro-conisma-aiol/poster/1-ialuna-et-al-poster-archeologia.pdf>
- Laursen, E. M. (1963). An Analysis of relief bridge scour. *Journal of Hydraulic Engineering Division*. March 1963. 89(3):93-118.
- Li, F. and Cheng, L. (1999). Numerical model for local scour under offshore pipelines. *Journal of Hydraulic Engineering*. April 1999, 125(4):400-406.
- Li, F. and Cheng, L. (2001). Prediction of lee-wake scouring of pipelines in currents. *Journal of Hydraulic Engineering*. March/April 2001, 127(2):106-112.
- Lim, S. Y. and Cheng, N. S. (1998). Prediction of live-bed scour at bridge abutments. *Journal of Hydraulic Engineering*. June 1998 , 124(6):635-638.

- LoPresti, F. and Miller, B. I. (2004). Online paper entitled: “*Finding the Best Path for a Pipeline: Interactive Route-Planning on NYU Web*” The specified format is available at [www.nyu.edu/its/pubs/connect/archives/96summer/loprestipipeline.html](http://www.nyu.edu/its/pubs/connect/archives/96summer/loprestipipeline.html).
- Mahmud, M. R. and Chai, B. C. (2003a). The Need for Precision in Mapping the Seabed. In: IHOCE’03 (International Hydrographic & Oceanographic Conference & Exhibition 2003). PWTC (Putra World Trade Centre), Kuala Lumpur, Malaysia. 8-10 July 2003.
- Mahmud, M. R and Chai, B. C. (2003b). The Benefit of GIS for the Offshore Engineering. In: Ali, S. J. S., *Proceedings of International Symposium & Exhibition on Geoinformation 2003 (ISG03)*. 350.
- Mao, Y. (1986). *The Interaction between a Pipeline and an Erodible Bed*. Technical University of Denmark, Denmark: PhD Thesis.
- Mare, R. F. dela, (1985). *Advances in Offshore Oil and Gas Pipeline Technology*. Gulf Publishing Company, United Kingdom.
- Marti, J. (1976). *Lateral Loads Exerted on Offshore Piles by Subbottom Movements*. Texas A&M University: Ph.D Thesis.
- Mazurkiewicz, B. K. (1987) Offshore Platforms-General. In: Mazurkiewicz, B. K. (1987) *Offshore Platforms and Pipelines*. Trans Tech Publications, Germany. Pp 1-34.
- Mazurkiewicz, B. K. and Topolnicki, M. (1987). Gravity Platform Behavior and Dowel Forces During Installation on the Sea Bottom. In: Mazurkiewicz, B. K. (1987) *Offshore Platforms and Pipelines*. Trans Tech Publications, Germany. Pp 217-298.
- McCoy, J. and Johnston, K. (2001). *Using ArcGIS™ Spatial Analyst*. USA: ESRI.

- Meade, R. and Uzelac, N. (2004). Ultrasonic Tool Inspect Long Seam of ERW Pipeline. *Pipeline & Gas Journal*. August 2004. 231(8):48-52.
- Melegari, J. E. and Bressan, G. (1990). Hazards and Protection Concepts for Deepwater Pipelines – The Environmental actors. In: Ellinas, C. P. *Advance in Subsea Pipeline Engineering and Technology*. The Netherlands: Kluwer Academic Publishers. 321-354.
- Melville, B. W. and Chiew, Y. M. (1999). Time scale for local scour at bridge piers. *Journal of Hydraulic Engineering*. January 1999, 125(1):59-65.
- Messervy, P. (1977). Pipeline location and exposure, inspection anchorages, saddles, coatings and connections. *Proceedings Research & Maintenance 77 Conference – Planning for the future- Below Water Line Aspects*, Brighton, Pp. 105-109.
- Milne, P. H. (1980). *Underwater Engineering Survey*. Gulf Publishing Company. London, United Kingdom.
- Mousselli, A. H. (1981). *Offshore Pipeline Design, Analysis and Methods*. PennWell Books. USA.
- Muhlbauer, W. K. (2004). *Pipeline Risk Management: Ideas, Techniques, and Resources 3rd Edition*. PennWell Corp. USA.
- Nielsen, R. and Gravesen, H., (1985). 3D Wave Theory Applied to Pipeline Spanning Problems. In: de la Mare, R. F. *Advance in Offshore Oil & Gas Pipeline Technology*. Texas: Gulf Publishing Company. 129-142.
- Olson, M., Pollard, C., Hughes, B. and Putman, B. (2004). Advancing ILI Technology Assesses Mechanical Damage. *Pipeline & Gas Journal*. October 2004. 231(10):21-26.



- Osborne, A., and Abboot, V., (2000) A GIS for Cable Routing. *The Hydrographic Journal*. January 2000. 103 (1). The specified format is available at <http://www.hydrographicsociety.org/Articles/journal/2002/103-1.htm>
- Oynes, C. (2004). Deepwater Expansion Continues in Gulf of Mexico. *Pipeline & Gas Journal*. June 2004. 231(6):58-59.
- Palmer, A. C. (1985). Concrete Coatings for Submarine Pipelines. In: de la Mare, R. F. *Advance in Offshore Oil & Gas Pipeline Technology*. Texas: Gulf Publishing Company. 87-106.
- Palmer, J. (2004). GIS Plays Critical Role in Data Management & Pipeline Integrity. *Pipeline & Gas Journal*. February 2004. 231(2):33-35.
- Penspen Integrity, Inc. (1998). Can Limit States Design be Used to Design a Pipeline Above 80% SMYS? OMAE. Penspen Integrity Virtual Library. United Kingdom.
- Petillot, Y. R., Reed, S. R. and Bell J. M. (2002). Real Time AUV Pipeline Detection and Tracking Using Side Scan Sonar and Multi-Beam Echo-sounder. *IEEE*. October 2002. 13(10):1234-1239.
- Pettersen, P, Bjørnsen, T. and Myklestad, O. T. (1990). Deepwater Tie-in. In: Ellinas, C. P. (1985). *Advances in Subsea Pipeline Engineering and Technology*. Kluwer Academic Publishers. The Nertherlands. Pg. 355-372.
- Pigs Unlimited, Inc. (2005). Online source: <http://www.pigsunlimited.com>
- Porter, T. R. and Parsons, J. (2000). Online paper entitled: "Pipeline Safety: Inspection, Mapping & Visualization Methods". The specified format is available at: [http://www.gisdevelopment.net/proceedings/gita/oil\\_gas2000/papers/parsons.html](http://www.gisdevelopment.net/proceedings/gita/oil_gas2000/papers/parsons.html)

- Pradnyana, G., Surahman, A. and Saputro, A. (2000). Comparison of Some Standards for Submarine Pipeline. In: Proceedings of the Sixth AEESEAP Triennial Conference. Kuta, Bali, Indonesia. August 23-25, 2000.
- PWG (Pipeline Working Group). (1999). Guidance Notes on Geotechnical Investigation for Marine Pipelines. OSIF (Offshore Soil Investigation Forum).
- Rainbow, M. W., McKenzie, I. and Wijesinghe, N. S. (1985). Recent Developments in Pipeline Inspection Using Side-Scan Sonar. In: de la Mare, R. F. *Advance in Offshore Oil & Gas Pipeline Technology*. Texas: Gulf Publishing Company. 153-160.
- Rasmussen, G. J. (1998). The Integrated ROV Survey Solution. *Hydro INTERNATIONAL*. May/June 1998, 2(4): 43 –45.
- Richards, D. M. (1990). The Effect of Imperfection Shape on Upheaval Buckling Behaviour. In: Ellinas, C. P. (1985). *Advances in Subsea Pipeline Engineering and Technology*. Kluwer Academic Publishers. The Netherlands. Pg. 55-66.
- Richardson, J. E. and Panchang, V. G. (1998). Three-dimensional simulation of scour-inducing flow at bridge piers. *Journal of Hydraulic Engineering*. May 1998 , 124(5):530-540.
- Riemersma, G. (2000). Beyond the Paper Chart. *Hydro INTERNATIONAL*. Jan/Feb 2000, 2(4): 7-9.
- Roberts, E. (2004). Pipeline Regulation Laws, Regulations in Flux. *Pipeline & Gas Journal*. May 2004. 231(5):24.
- Robertson, S., Westwood, J. and Westwood, D. (2004). Offshore Pipeline: A \$54 Billion Market. *Pipeline & Gas Journal*. April 2004. 231(4):50-52.

- RockWare, Inc. (2004). User Manual of RockWorks2004. Colorado, USA: RockWare, Inc.
- SEATREK Org., (2005). Online article entitle: SEATREK Distance Learning, Mission: See Deep. The specified format is available at [www.seatrek.org/curriculum/rov.pdf](http://www.seatrek.org/curriculum/rov.pdf)
- Shaner, J. and Wrightsell, J. (2000). Editing in ArcMap. USA: ESRI.
- Smith, H.D. (2004). *Modelling the Flow and Scour Around an Immovable Cylinder*. The Ohio State University, Columbus, Ohio, USA: Msc Thesis.
- SSP&T Ltd., (2005). Digital Video Surveyor. Gelendzhik, Russia: SSP&T Ltd.
- Stephens, G. F. and Ginnard, A. J. (1985). Riser Design. In: Mare, R. F. dela, (1985). *Advances in Offshore Oil and Gas Pipeline Technology*. Gulf Publishing Company, United Kingdom. Pp 263-280.
- Strømme, R. (1985). Controlling the External Corrosion of Subsea Pipelines Using Cathodic Protection. In: de la Mare, R. F. *Advance in Offshore Oil & Gas Pipeline Technology*. Texas: Gulf Publishing Company. 117-128.
- Summer, B. M. and Fredsøe, J. (2001). Scour around pile in combined waves and current. *Journal of Hydraulic Engineering*. May 2001, 127(5):403-411.
- Summer, B. M., Fredsøe, J., and Christiansen, N. (1992). Scour around vertical pile in waves. *Journal of Waterway Port and Coastal Engineering*. January 1992, 118(1):15-31.
- Summer, B. M., Jensen, H. R., Mao, Y. and Fredsøe, J. (1988). Effect of lee-wake on scour below pipelines in current. *Journal of Waterway Port and Coastal Engineering*. May 1988, 114(5):599-614.

- Sumer, B. M., Truelsen, C., Sichmann, T. and Fredsøe, J. (2001). Onset of scour below pipelines and self-burial. *Coastal Engineering Journal*. December 2001, 42(4):313-335.
- Sylvester, T. (2004). Objective Outsider Helps Meet Integrity Management Regulations. *Pipeline & Gas Journal*. September 2004. 231(9):69-71.
- Thabeth, K. (2004). Lighting the Way. *Offshore Engineer*. September 2004. 29(9): 49-52.
- Van Beek, F. A. and Wind, H. G. (1990). Numerical modelling of erosion and sedimentation around offshore pipelines. *Coastal Engineering Journal*, June 1990, 14(2):107-128.
- Veisze, P. (2005). Online article entitled : “Airborne Digital Imaging for Spill Prevention & Response”. The specified format available at:  
<http://www.dfg.ca.gov/ospr/misc/etworkshop/powerpoint/PVeise.pdf>
- Williams, K. A. J. (1990). Hazard Assessment and Pipeline Design. In: Ellinas, C. P. *Advance in Subsea Pipeline Engineering and Technology*. The Netherlands: Kluwer Academic Publishers. 263-280.
- Wong, P. Y. (2004). *Development of Hydrographic Database for Offshore Pipeline Installation*. Universiti Teknologi Malaysia, Johor, Malaysia: Bsc Thesis.
- Yaakob, O. (2003). Wave Data Collection and Modelling for Engineering Applications. In: IHOCE’03 (International Hydrographic & Oceanographic Conference & Exhibition 2003). PWTC (Putra World Trade Centre), Kuala Lumpur, Malaysia. 8-10 July 2003
- Yusof, K. W. and Baban, S., (2004). Online paper entitled: “*Least-cost Pipelines Path to the Langkawi Island, Malaysia*” The specified format is available at  
[www.gisdevelopment.net/application/Utility/others/mi04053.htm](http://www.gisdevelopment.net/application/Utility/others/mi04053.htm).

Zeiler, M.(1999).Modeling Our World: The ESRI Guide to Geodatabase Design. ESRI. USA.

Zorica, N. B. and Jeffrey, K.P. (1999). Understanding Interorganizational GIS Activities: A Conceptual Framework. URISA Journal. Spring 1999. Vol. 11 (1):53-64.