

MEDICAL IMAGE CLASSIFICATION AND SYMPTOMS DETECTION  
USING NEURO FUZZY

MOHD ARIFFANAN BIN MOHD BASRI

A project report submitted in partial fulfillment of the  
requirements for the award of the degree of  
Master of Engineering (Electrical – Mechatronics and Automatic Control)

Faculty of Electrical Engineering  
Universiti Teknologi Malaysia

NOVEMBER 2008

## **ABSTRACT**

The conventional method in medicine for brain MR images classification and tumor detection is by human inspection. Operator-assisted classification methods are impractical for large amounts of data and are also non-reproducible. MR images also always contain a noise caused by operator performance which can lead to serious inaccuracies classification. The use of artificial intelligent techniques, for instance, neural networks, fuzzy logic, neuro fuzzy have shown great potential in this field. Hence, in this project the neuro fuzzy system or ANFIS was applied for classification and detection purposes. Decision making was performed in two stages: feature extraction using the principal component analysis (PCA) and the ANFIS trained with the backpropagation gradient descent method in combination with the least squares method. The performance of the ANFIS classifier was evaluated in terms of training performance and classification accuracies and the results confirmed that the proposed ANFIS classifier has potential in detecting the tumors.

## ABSTRAK

Teknik konvensional di dalam perubatan untuk pengelasan dan pengesanan barah untuk imej magnetik resonan otak adalah dilakukan secara pemeriksaan manual. Teknik pengelasan yang dibantu oleh operator adalah tidak praktikal untuk jumlah data yang besar dan juga tidak dapat dihasilkan. Imej magnetic resonan juga lazimnya mengandungi hingar yang berpunca daripada mutu kerja operator yang mana boleh menjurus kepada ketidaktepatan pengelasan yang serius. Penggunaan teknik kecerdikan buatan contohnya, neural network, fuzzy logic dan juga neuro fuzzy telah menunjukkan potensi yang besar di dalam bidang ini. Oleh yang demikian, di dalam projek ini sistem neuro fuzzy atau juga dikenali sebagai ANFIS telah diaplikasikan untuk tujuan pengelasan dan pengesanan. Pengambilan keputusan telah dilakukan secara dua peringkat: pengekstrakan sifat menggunakan prinsip analisis komponen dan ANFIS terlatih dengan penggabungan teknik '*backpropagation gradient descent*' dan juga '*least squares*'. Prestasi pengkelas ANFIS berkenaan dengan prestasi latihan dan ketepatan pengelasan telah diuji dan hasilnya telah menunjukkan bahawa pengkelas ANFIS yang dicadangkan mempunyai potensi untuk mengesan barah.

## TABLE OF CONTENTS

CHAPTER	TITLE	PAGE
	<b>DECLARATION</b>	ii
	<b>DEDICATION</b>	iii
	<b>ACKNOWLEDGMENTS</b>	iv
	<b>ABSTRACT</b>	v
	<b>ABSTRAK</b>	vi
	<b>TABLE OF CONTENTS</b>	vii
	<b>LIST OF TABLES</b>	x
	<b>LIST OF FIGURES</b>	xi
	<b>LIST OF ABBREVIATIONS</b>	xiii
	<b>LIST OF SYMBOLS</b>	xiv
	<b>LIST OF APPENDICES</b>	xv
<b>1</b>	<b>INTRODUCTION</b>	1
	1.1 Project Background	1
	1.2 Magnetic Resonance Imaging	2
	1.3 Problem Statement	5
	1.4 Objectives	5
	1.5 Scope of Work and Methodology	6
	1.6 Thesis Outline	7
<b>2</b>	<b>LITERATURE REVIEW</b>	8
	2.1 Related Works	8
	2.2 Artificial Neural Networks	11
	2.2.1 Learning from Biology	11
	2.2.2 Generic Model of Neural Network	13

2.2.3	Bias and Threshold	14
2.2.4	Activation Functions	15
2.2.5	Network	15
2.2.6	Learning Phase	16
2.3	Fuzzy Logic Systems	17
2.3.1	Advantages of Fuzzy Logic	18
2.3.2	Disadvantages of Fuzzy Logic	19
2.3.3	Fuzzy Sets	20
2.3.4	Membership functions	21
2.3.5	Components of a fuzzy system	21
2.3.6	Fuzzy Logic Graphical User Interface (GUI)	24
2.4	Principal Component Analysis (PCA)	25
<b>3</b>	<b>RESEARCH METHODOLOGY</b>	27
3.1	Methodology	27
3.2	Proposed Method	27
3.3	Transformation of Image to Data Form	28
3.4	Pixels Labeling	30
3.5	Region of Interest Extraction	31
3.6	Feature Extraction using Principal Component Analysis (PCA)	32
3.7	Data Modeling	34
3.8	System developing	37
3.8.1	Data Management and Preparation	37
3.8.2	Data Mining	38
3.8.3	Input Phase	38
3.8.4	FIS Phase	39
3.8.5	ANFIS modeling phase	40
3.8.6	Output phase	42

<b>4</b>	<b>NEURO FUZZY MODELING AND SOFTWARE IMPLEMENTATION</b>	<b>43</b>
4.1	Neuro Fuzzy Model	43
4.2	Adaptive neuro fuzzy inference system (ANFIS)	44
4.2.1	ANFIS Architecture	45
4.2.2	Learning algorithm of ANFIS	49
4.2.3	ANFIS Classifier	51
4.3	ANFIS editor GUI	52
4.4	FIS Editor	53
4.5	Membership Functions Editor	54
4.6	Rule Editor	55
4.7	Rule Viewer	56
4.8	ANFIS Model Structure	57
4.9	Modeling Data through ANFIS	58
4.10	Model Validation (Checking and Testing Data)	60
<b>5</b>	<b>RESULTS AND DISCUSSIONS</b>	<b>62</b>
5.1	Result	62
5.2	Performance Analysis	64
5.3	Noise Consideration	66
5.4	Comparisons of Result	70
<b>6</b>	<b>CONCLUSIONS AND FUTURE WORKS</b>	<b>72</b>
6.1	Conclusions	72
6.2	Future Works	74
	<b>REFERENCES</b>	<b>77</b>
	Appendices A-K	80 - 99

## **CHAPTER 1**

### **INTRODUCTION**

#### **1.1 Project Background**

Automated classification and detection of tumors in different medical images demands high accuracy since it deals with human life. Also, computer assistance is highly sought in medical institutions due to the fact that it could improve the results of humans in such a domain where the false negative cases must be at a very low rate. It has been proven that double reading of medical images could lead to better tumor detection. But the cost incurred in double reading is very high, therefore good software to assist humans in medical institutions is of great interest nowadays.

Different approaches that can produce medical images must be studied. Also, the technique that produces those images is very important in order to know what to apply to a certain medical image in order to get better results. A lot of methods have been proposed in the literature for CT (Computed Tomography), such as scans, different types of X-rays, MRI images and other radiological techniques. With all this effort done in the research field, there is still a lot of place for improvements and the medical image processing is a domain in continuous expansion. Why is this domain in continuous expansion and without a good accepted method? This is due to the fact that in such an important domain, the accuracy must be very high and the false negative rate must be low. The problem is that it is not very easy to obtain such results. The idea is to reduce human error as much as possible by assisting

physicians and radiologists with some software that could lead to better results. This is important since it involve saving human lives.

In this project the automated classification of brain magnetic resonance images by using some prior knowledge like pixel intensity and some anatomical features is proposed. Since currently there are no widely accepted methods, therefore automatic and reliable methods for tumor detection are of great need and interest. The application of neuro fuzzy systems in the classification and detection of data for MR images problems are not fully utilized yet. These include the clustering and classification techniques especially for MR images problems with huge scale of data which consumes time and energy if done manually. Thus, fully understanding the detection, classification or clustering techniques is essential to the developments of neuro fuzzy systems particularly in medical-related problems. Furthermore, fuzzy set theory plays an important role in dealing with uncertainty when making decisions in medical applications [1]. Neuro fuzzy systems are fuzzy systems which use ANNs theory in order to determine their properties (fuzzy sets and fuzzy rules) by processing data samples. A specific approach in neuro fuzzy development is the adaptive neuro fuzzy inference system (ANFIS), which has shown significant results in modelling nonlinear functions. The ANFIS learns features in the data set and adjusts the system parameters according to a given error criterion [2]. Successful implementations of ANFIS in biomedical engineering have been reported, for classification [3] and data analysis [4].

## **1.2 Magnetic Resonance Imaging**

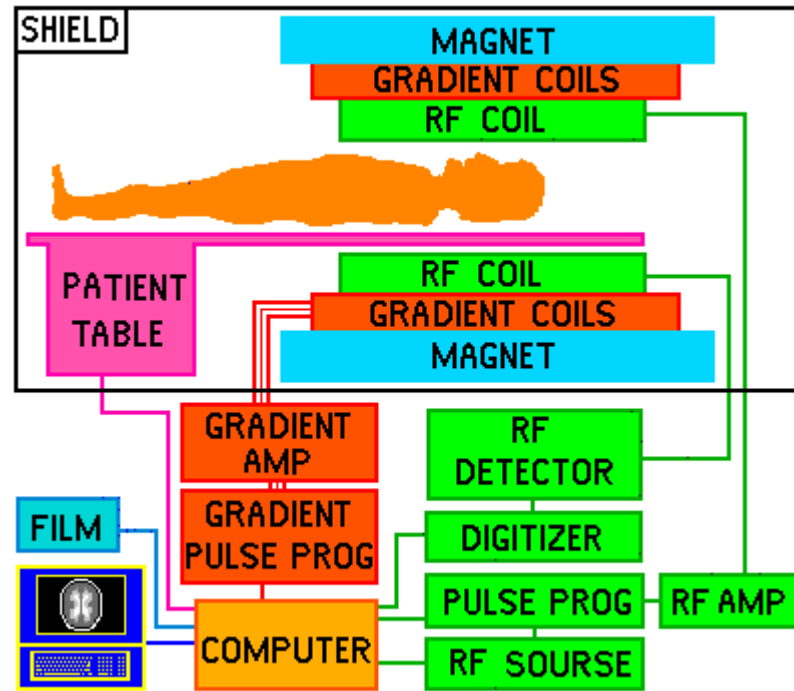
Magnetic resonance imaging (MRI) is a procedure used to produce high resolution images of the inside of the body, including the brain. MRI is a type of *nuclear magnetic resonance* (NMR), which is used by chemists to study the properties of molecules. The technique is called magnetic resonance imaging rather than nuclear magnetic resonance imaging because of the public's negative associations with the word *nuclear* in the late 1970's. MRI, like other imaging techniques such as CAT and PET, is primarily a tomography imaging technique



("tomo" means slice). This means that it produces an image in a thin slice through the body. This form of imaging is, in some respects, very much like a real anatomical slice through the body. In fact, to the untrained eye, an MRI image may be indistinguishable from a slice taken from a post-mortem body. However, unlike a post-mortem slice, the MRI is formed by an MRI camera or scanner and the slices are composed of groups of picture elements or *pixels* displayed on a computer monitor. In MRI the subject or patient is placed inside the scanner which is made up of a moveable bed-like structure and a large hollow tube. The tube contains a thick coil of wire that generates a very intense magnetic field (between 1.5 and 4 Tesla) which is strong enough to accelerate a paper clip to near lethal velocities across the distance of a small room. In order to generate a magnetic field of this strength the coil is cooled to near absolute zero with liquid helium. This very strong magnetic field is then used to align the hydrogen nuclei of the tissue to be imaged. Also placed near the tissue to be imaged is another coil of wire called an RF coil (RF because it generates/reads radio frequency fields). The RF coil is used to both change the energy state of the hydrogen nuclei and to record the RF output of these perturbations. The latter are the raw data of an MRI which are recorded by the computer, transformed and then displayed [5]. Figure 1.1 shows a picture of an MRI machine and Figure 1.2 shows the schematic of an MRI machine.

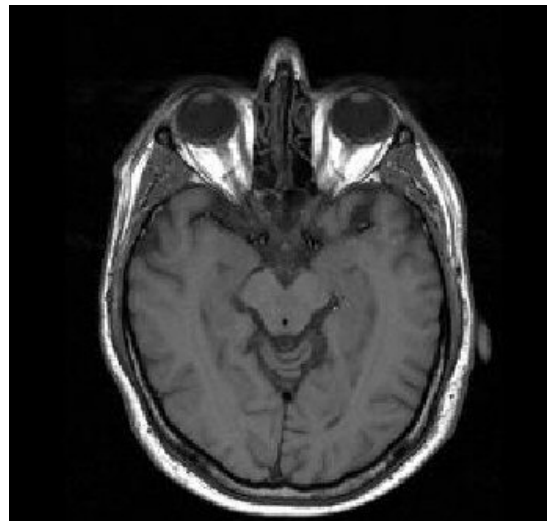


**Figure 1.1:** MRI machine



**Figure 1.2:** Schematic diagram of MRI machine

In MRI, water molecules give off radio signals which are converted into high resolution images that look like a picture shown in figure 1.3.



**Figure 1.3:** Brain MRI

### **1.3 Problem Statement**

The conventional method in medicine for brain MR images classification and tumor detection is human inspection. Operator-assisted classification methods are impractical for large amounts of data and are also non-reproducible. MR images also always contain a noise caused by operator performance which can lead to serious inaccuracies classification. The MR images data is by nature, a huge, complex and cognitive process. Accurate diagnosis of MR images data is not an easy task and is always time consuming. In some extreme scenario, diagnosis with wrong result and delay in delivery of a correct diagnosis decision could occur due to the complexity and cognitive process of which it is involved.

The use of artificial intelligent techniques for instance, neural networks, fuzzy logic, neuro fuzzy has shown great potential in this field. With the involvement of soft computing, the pattern matching, classification and detection of algorithms which have direct applications in many medical problems have become much easier to be implemented and diagnosed.

Hence, this project tries to find out how the neuro fuzzy system or the hybrid combination of neural network and fuzzy logic techniques can be applied in the classification and detection purposes, particularly on the medical field.

### **1.4 Objectives**

The main objective of this project is to propose an efficient classification technique for magnetic resonance (MR) images using neuro fuzzy. Hence, the study on the fundamental theory of neuro fuzzy system have to be done. This includes the neuro fuzzy architecture and the adaptation algorithm for the neuro fuzzy structure itself. The neuro fuzzy models hereby refer to the ANFIS (Adaptive Neuro Fuzzy Inference System). Besides, a sample medical image will be tested on the model to observe the classification and detection performance and subsequently optimization

of the chosen technique will be carried out. As the ultimate goal of this project, hopefully an automated system that provides high accuracy of brain medical images classification and symptoms detection that probably can replace the current human visual inspection methods is achieved.

## 1.5 Scope of Work and Methodology

The scope of the project is as follows:-

- i. Convert the brain medical images into a form of data using MATLAB.
- ii. Process the brain medical images using PCA.
- iii. Develop the neuro fuzzy algorithm for classification using MATLAB.
- iv. The neuro fuzzy model considered hereby refers to ANFIS (Adaptive Neuro Fuzzy Inference System).
- v. Deal only with the same size of the brain medical images slice.
- vi. Distinguish between normal and abnormal of the brain medical images.
- vii. Extract the region of abnormal tissues using image processing tool in MATLAB.
- viii. Training, testing and tuning or optimization parameters.
- ix. Analyzing the neuro fuzzy model performance accuracy.

The methodologies of project are as follows:

- i. Involves the neuro fuzzy model coding, simulation, adaptation and training of the neuron using the MATLAB.
- ii. This project starts with converting the brain medical images into a form of data using MATLAB.
- iii. The brain medical images also have to be pre-processed using PCA to reduce the dimensionality of the data.
- iv. Classify the abnormal brain medical images based on the region of abnormal tissues using neuro fuzzy.

- v. Then, this proposed technique will be coded in MATLAB and subsequently to be trained and tested with the brain medical images data.
- vi. Finally, optimize the performance of the proposed technique.

## **1.6 Thesis Outline**

This thesis is organized as follows. In Chapter 1, some overview including the background, problem statement, objectives, scope of work and methodology are presented. Some literature reviews, related works and also theories regarding this project are included in Chapter 2. Chapter 3 contains a research methodology of the proposed method, the extraction of a region of interest, transformation of image into a form of data and also data and ANFIS modelling. The neuro fuzzy architecture and software development and implementation for classification are discussed in Chapter 4. Chapter 5 presents the result from the simulation and discusses the performance analysis. Lastly, the conclusion of this project and some recommendations for future work are discussed in Chapter 6.

## REFERENCES

1. L.I. Kuncheva, F. Steimann, "Fuzzy diagnosis," *Artificial Intelligence in Medicine*, vol. 16, pp. 121-128, 1999.
2. J.-S.R. Jang, "ANFIS: Adaptive-network-based fuzzy inference system," *IEEE Transactions on Systems, Man, and Cybernetics*, vol. 23(3), pp. 665-685, 1993.
3. S.Y. Belal, A.F.G. Taktak, A.J. Nevill, S.A. Spencer, D. Roden, S. Bevan, "Automatic detection of distorted plethysmogram pulses in neonates and paediatric patients using an adaptive-network-based fuzzy inference system," *Artificial Intelligence in Medicine*, vol. 24, pp. 149-165, 2002.
4. I. Virant-Klun, J. Virant, "Fuzzy logic alternative for analysis in the biomedical sciences," *Computers and Biomedical Research*, vol. 32, pp. 305-321, 1999.
5. Joseph P. Hornak, *The Basics of MRI*, 1996-2008.
6. Kasabov, N.: *Foundations of Neural Networks, Fuzzy Systems and Knowledge Engineering*. MIT Press, Cambridge, 1996.
7. Rami J. Oweis and Muna J. Sunna', "A Combined Neuro Fuzzy Approach for Classifying Image Pixels in Medical Applications". *Journal of Electrical Engineering*, Vol.56, No.5-6, 2005.
8. N.Benamrane, A. Aribi, L.Kraoula, "Fuzzy Neural Networks and Genetic Algorithms for Medical Images Interpretation". *IEEE Proceedings of the Geometric Modeling and Imaging*, 2006.
9. Ramiro Castellanos and Sunanda Mitra, "Segmentation of magnetic resonance images using a neuro-fuzzy algorithm". *IEEE Symposium on Computer-Based Medical Systems*, 2000.

10. Chin-Ming Hong et al, "A Novel and Efficient Neuro-Fuzzy Classifier for Medical Diagnosis". IEEE International Joint Conference on Neural Networks, 2006.
11. F.M.Frattale Mascioli, G.Martinelli, A constructive approach to neuro-fuzzy networks, *Signal Processing*, 64 : 347-358, 1998.
12. J.-S.R., Jang, Input selection for ANFIS learning, *Fuzzy Systems. Proceedings of the Fifth IEEE International Conference*, V012: 1493 -1499, 1996.
13. Panella, M.; Rizzi, A.; Mascioli, F.M.F.; Martinelli, G., ANFIS synthesis by hyperplane clustering, *IFSA World Congress and 20th NAFIPS International Conference*, vol.1: 340 -345, 2001.
14. J.S. R. Jang, C.-T. Sun, and E. Mizutani , *Neuro- Fuzzy and Soft Computing*, New Jersey: Prentice Hall, USA, p. 239-240, 1997.
15. S.L.Chiu, Fuzzy model identification based on cluster estimation, *Journal of Intelligent and Fuzzy Systems*, 2 (3): 267-278, 1994.
16. Jang JSR, Sun C T and Muzutani E, *Neuro-Fuzzy and Soft Computing-A computational approach to learning and machine intelligence*. Pearson Education Inc, 2007.
17. K. I. Diamantaras and S. Y. Kung, "Principal Component Neural Networks: Theory and Applications", John Wiley & Sons,Inc., 1996.
18. Myoung Soo Park; Jin Hee Na; Jin Young Choi, "PCA-based feature extraction using class information", *IEEE International Conference on Systems, Man and Cybernetics*, pp.341-345, 2005.
19. Han Witjes et al. Multispectral magnetic resonance image analysis using principal component and linear discriminant analysis. *Journal of Magnetic Resonance Imaging*, 17:261–269, 2003.
20. Lukas L. et al. Brain tumor classification based on long echo proton MRS signals. *Artificial Intelligence in Medicine*, 31:73–89, 2004.
21. Cagnoni, Coppini, Rucci, Caramella,Valli, Neural Network Segmentation of Magnetic Resonance Spin Echo Images of the Brain. *Journal of Biomedical Engineering*, V 15, pp.355-362. 1993.
22. Meneganti, Saviello y Tagliaferri, Fuzzy Neural Network for Classification and Detection of Anomalies. *IEEE Transactions on Neural Networks*,Vol.9, no 5 September 1998.

23. Valli, Poli, Cagnoni and Coppini, Neural Networks and Prior Knowledge Help the Segmentation of Medical Images. *Journal of Computing and Information Technology*, Vol.6 No. 2. 1998.
24. M. Morrison and Y. Attikiouzel, "A probabilistic neural network based image segmentation network for magnetic resonance images," *Proc. Conf. Neural Nets.*, vol. 3, pp. 60-65, Baltimore, 1992.
25. L. O. Hall, et al, "A comparison of neural network and fuzzy clustering techniques in segmenting magnetic resonance images of the brain," *IEEE Trans. Neural Nets.*, Vol. 3, pp. 672-682, 1992.
26. N. Benamrane and al., "A Hybrid Fuzzy Neural Networks for the Detection of Tumors in Medical Images", *American Journal of Applied Sciences*, 2(4), p. 892-896, 2005.
27. R. P. Li, M. Mukaidono and I. B. Turksen, "A fuzzy neural network for pattern classification and feature selection," *Fuzzy Sets Sys.*, vol. 130, pp. 101-108, 2002.
28. Rafael. C. Gonzalez, Richard. E. Woods, *Digital Image Processing*, Addison Wesley, Massachusetts, 1999.
29. Anil Jain., *Fundamentals of Digital Image Processing*, Prentice Hall. 1989.
30. Nauck, D., Klawonn, F., and Kruse, R., *Foundations of Neuro-Fuzzy Systems*. Wiley, Chichester, England, 1997.
31. Paul Suetens, *Fundamentals of Medical Imaging*, Cambridge University Press, London, 2002.
32. User manual, Fuzzy toolbox, Mathworks Inc.
33. Math works worldwide, Matlab Home, Image Processing Toolbox, Image Processing, analysis and algorithm development: <http://www.mathworks.com/products/image>.