



Review Paper

Structure Formation in Anode and Its Effect on the Performance of Micro-Tubular SOFC: A Brief Review

Siti Munira Jamil ^{1,2}, Siti Halimah Ahmad ^{1,2}, Mazlinda Ab Rahman ^{1,2}, Mohd Hafiz Dzarfan Othman ^{1,2,*}, Mukhlis A Rahman ¹, Juhana Jaafar ¹, Ahmad Fauzi Ismail ¹

¹ Advanced membrane Technology Research Centre, Universiti Teknologi Malaysia, 81310 UTM JB, Johor, Malaysia

² Renewable Energy Research Group, Department of Energy Engineering, Faculty of Chemical and Energy Engineering, Universiti Teknologi Malaysia, 81310 UTM JB, Johor, Malaysia

Article info

Received 2018-03-26
Revised 2018-06-30
Accepted 2018-08-08
Available online 2018-08-08

Keywords

MT-SOFC
Sponge-like
Finger-like
Microstructure
Extrusion

Highlights

- There is limited information on the structure of anode and its effect to the cell performance.
- Pore formation in anode and its effect to the MT-SOFC performance has been reviewed.
- Finger-like voids affected the anode's mechanical strength, permeation and conductivity.
- Pore formation in anode become a key parameter in producing high performance MT-SOFC.

Abstract

Anode-supported micro-tubular solid oxide fuel cell (SOFC) offers many advantages over the electrolyte and cathode-supported configurations in terms of simplicity, reliability, and efficiency. In such design, the anode substrates should possess a highly porous structure, provide active sites reaction as well as serving good mechanical strength. This structure is desired to provide enough fuel, which in turn increases the reaction rate and reduces the concentration polarisation. Hence, pore formation in anode become a key parameter in producing high performance micro-tubular SOFC. This review is mainly focusing on the fabrication of anode substrate for micro-tubular SOFC, the types of pores in anode structure and its effect to the cell performance.

© 2019 MPRL. All rights reserved.

Contents

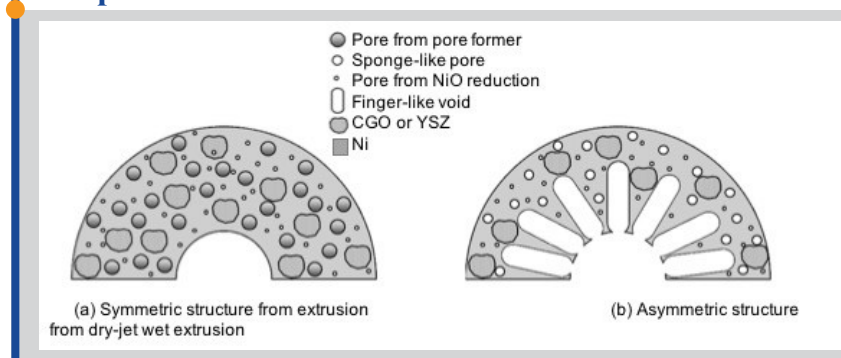
1. Introduction	197
2. Characteristics of an Efficient Anode Substrate for MT-SOFC.....	198
3. Fabrication Technique of Anode-Supported MT-SOFC.....	198
4. Pores in Anode Prepared by Phase Inversion.....	199
5. Effect of pores to the fuel cell performance.....	200
6. Conclusion and Future Direction.....	200
References.....	200

1. Introduction

Recently, development in solid oxide fuel cells (SOFCs) are mainly focusing on the structures, designs, materials, and fabrication techniques of the components (i.e. anode, electrolyte, cathode, and interconnects) in order to meet the requirement of power production and boost the SOFCs performance in an economic way. There are two common structural designs; planar or

tubular SOFCs, depending on its shape and structure. The tubular design has been introduced by extrusion method in order to prevent the thermal shock problem facing by conventional planar design. Since the power density is inversely proportional to the tubular cell diameter, Singhal and Kendall [1] had initiated an effort by introducing a smaller cell diameter known as micro-

Graphical abstract



* Corresponding author at: Phone: +607-5536373; fax: +607-5535925
E-mail address: hafiz@petroleum.utm.my (M.H.D. Othman)

DOI: 10.22079/JMSR.2018.83592.1187

tubular SOFCs (MT-SOFCs). The development of this advanced cell design promotes an excellent thermal stability during rapid heat cycling, quick start-up capability, high power output density, low capital cost and portable characteristics compared to the conventional planar and tubular SOFCs [2].

In early 1990s to late 2000s, first generation of MT-SOFC developed was designed in an electrolyte-supported SOFC system with YSZ electrolyte tubes up to 5 mm in diameter. Thick electrolyte layer was first developed to serve as support layer of the cell. Indeed, support layer responsible to provide mechanical strength to the entire cell for deposition of the remaining cell layers [3]. Other promising designs include electrode-supported SOFC which uses thick anode or cathode as the supporting layer. Table 1 shows the comparison of different configurations in MT-SOFC. Anode-supported MT-SOFC [4-104] is more favourable than other type of configurations; electrolyte-supported [80,105-114] and cathode-supported [2,115-120] since it allows the deposition of thin electrolyte layer, which results to the reduction in ohmic loss and consequently, enhance cell's power density [35,83,121]. Besides, it offers many other advantages in terms of simplicity, reliability, and efficiency.

The anode will particularly serves as a "backbone" to support for the whole micro-tubular cell which gives mechanical support for the thin electrolyte and cathode layer [122]. Therefore, it is crucial to fully understand the structural properties of the anode substrates because these structural properties (i.e. particle size, porosity, pore-size distribution and composition of phases) determine the performances of SOFC system [4,11,50,123-127]. For instance, the performances represent its mechanical strength, gas permeability, tortuosity, electrical conductivity, and power-generating characteristic [128]. Therefore, this review focuses mainly on the fabrication of anode tube as a substrate layer for MT-SOFC, types of pore structure in the anode and how the pores could affect the performance of anode-supported SOFC.

2. Characteristics of an Efficient Anode Substrate for MT-SOFC

Besides acting as the mechanical support for SOFCs cell (in anode-supported case), anode tube primarily serves as a catalyst to provide active

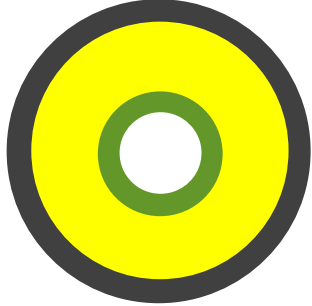


sites reaction or known as triple-phase boundaries (TPB) regions for the electrochemical oxidation of fuels. The electrochemical active sites in anode are responsible to produce numbers of ionic and electronic conduction paths besides create diffusion path for fuels and by-products (i.e. water and carbon dioxide) to reach and leave the site reactions, simultaneously [128]. Consequently, the anode substrates should possess a highly porous structure and retain its porosity after sintering. However, excessive porosity may degrade its mechanical strength [53] and its availability to provide the active TPB areas [125].

Metallic-anode material such as nickel (Ni) is commonly used as the main material for anode due to its excellent catalytic activity towards reforming and oxidation reaction [49,67,76,121-122,124,129-139]. Indeed, nickel is relatively low cost, excellent chemical stability, and high electronic conductivity. For the fabrication of anode tube as a substrate, nickel oxide (NiO) is commonly used instead of Ni, due to ease of processing and high availability, in which the sintered NiO tube will be reduced to Ni under hydrogen environment later. To date, ceramic-metallic material known as cermet is widely used as it satisfies most of the general requirements for SOFC anode. NiO is blended with electrolyte materials such as yttria-stabilized zirconia (YSZ) or cerium gadolinium oxide (CGO) in the dope suspension as the addition of electrolyte materials would extend the active zones for anode reaction, prevent the Ni from aggregation, reduce the thermal expansion coefficient mismatch and produce effective adhesion with electrolyte layer [140].

3. Fabrication Technique of Anode-Supported MT-SOFC

The quality of the anode supported cell mainly depends on its fabrication technique since the macrostructure, thickness and compound uniformity could be tailored during the fabrication process. Recently, an article that reviewed the most common and recent fabrication technique for MT-SOFCs named plastic mass ram extrusion and dry-jet wet extrusion has been published [141]. There are a number of similarities as well as dissimilarities between these two methods.

Table 1
Comparison of different configurations in MT-SOFCs.

MT-SOFCs Configuration	Electrode-Supported SOFCs		
	Electrolyte-supported SOFCs	Anode-supported SOFCs	Cathode-supported SOFCs
Schematic images of different MT-SOFCs configuration			
Advantages	<p>Thick electrolyte</p> <ul style="list-style-type: none"> High mechanical robustness due to dense structures and good stability for RedOx (Reduced and Oxidation Atmosphere) cycles [142] Gas-diffusible due thin electrodes layer [143] 	<p>Thick anode</p> <ul style="list-style-type: none"> Low operating temperature (about 750 °C) and ohmic resistance due thin electrolyte layer [142] High the electrical output due to low ohmic resistance [142] Low materials cost since nickel (Ni) or nickel oxide (NiO) is relatively cheaper than electrolyte and cathode materials Easy to fabricate 	<p>Thick cathode</p> <ul style="list-style-type: none"> Good stability under RedOx condition and low carbon deposition due thin anode [144]
Disadvantages	<ul style="list-style-type: none"> High ohmic losses resulting from thick electrolyte layer [142] 	<ul style="list-style-type: none"> Low mechanical reliability due to porous structures and low RedOx stability [143] 	<ul style="list-style-type: none"> Limited study and research based on cathode-supported Induce chemical reaction between cathode and electrolyte at high sintering temperature [145] High polarisation resistance [145]

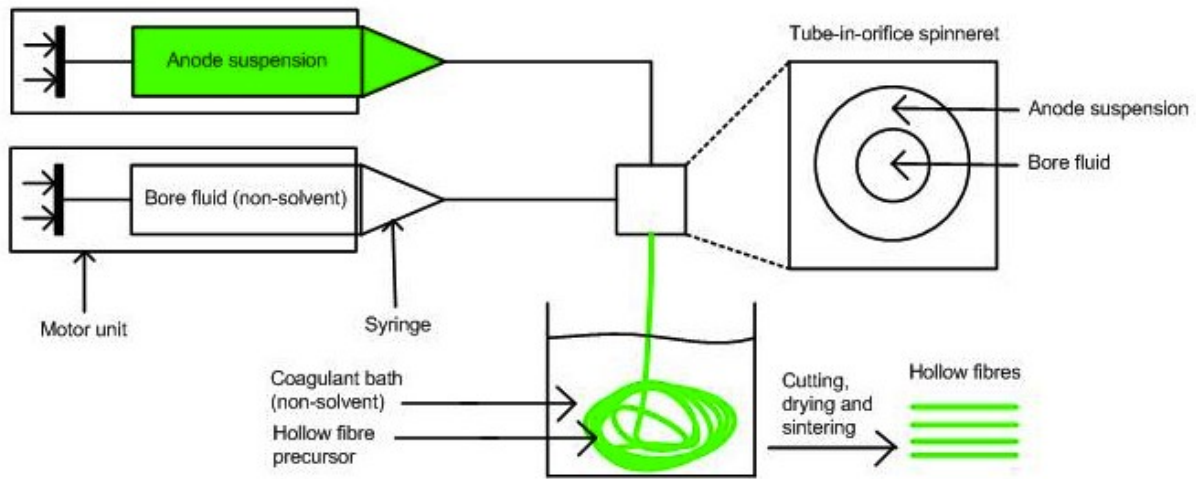


Fig. 1. Schematic diagram of hollow fibre fabrication via dry-jet wet extrusion.

In the ram extrusion method, a viscous paste is formed by mixing the anode materials (NiO and YSZ) prior to being transformed to support tubes using a customized die. Before proceeding to the sintering step, the support tubes are dried and cut to the 30 cm length. In contrast, the suspension of dry-jet wet extrusion method is in liquid form and the solidification of the hollow fibre occurs via phase inversion process initiated by the solvent/non-solvent exchange. Whereas in ram extrusion method, the tubes are dried immediately after extrusion before the sintering process.

The dry-jet wet extrusion is slightly more complex than that of the ram extrusion since it involves a non-solvent as coagulant. The system set-up is illustrated in Figure 1. The anode suspension is firstly prepared using anode materials (e.g. NiO and YZS), organic solvent (e.g. N-methylpyrrolidone) and polymer binder (e.g. polyethersulfone). The hollow fibre precursor formed after the internal coagulant passing through the spinneret centres. Subsequently, the solidification process via solvent/non-solvent exchange where the process called as phase-inversion [146]. Lastly, the hollow fibre is dried and cut to 30 cm before being sintered and reduced.

4. Pores in Anode Prepared by Phase Inversion

Distinctive fabrication methods would result in diverse anode structures [128]. For instance, mass ram extrusion method usually generates a symmetrical structure [34] whereas dry-jet wet extrusion technique commonly creates an asymmetric structure of anode tubes [83], as illustrated in Figure 2. Symmetric and asymmetric structures determine the

homogeneous and heterogeneous morphology, respectively.

Microscopic pores that formed after NiO reduction to Ni is uniformly circulated in the anode regions which eventually improve the fuel and gas transportation in the layer [7]. Thus, several researchers had incorporated degradable pore-forming agent such as graphite [53,128] starch [125] and poly methyl methacrylate beads (PMMA) [7,52] into the anode suspension in order to induce the macro-size pore in anode substrate during the sintering process.

On the other hand, the formation of asymmetric structure through phase-inversion comprises of finger-like and sponge-like regions as shown in Figure 2 (b). The resultant structures enhances the gas diffusion as well as the flow of fuel and reaction products [83]. If the structural formation is one of the restraints of ram extrusion, the ability of dry-jet wet extrusion on generating preferred morphology can be realized by simple adjustment on additive loading in the suspension, air gap, or flow rate of internal coagulant [83,104].

Figure 3 shows the effect of ethanol loading in the dope suspension as the fabrication parameters on anode asymmetric structure [55], where characterized by the finger-like voids length. The sample name written in the SEM images was based on how much ethanol was added into the suspension. For example, E-0 represents 0 wt.% of ethanol while E-15 was for 15 wt.% of ethanol. As can be seen, addition of ethanol (from 0 to 20 wt.%) in anode inner suspension had resulted to the reduction in the finger-like voids length from 85 to 50% of anode thickness. This can be explained by the rise in the suspension viscosity when ethanol content is increased, which then will accelerate the precipitation rate during phase inversion process and thus resulting in shorter finger-like voids.

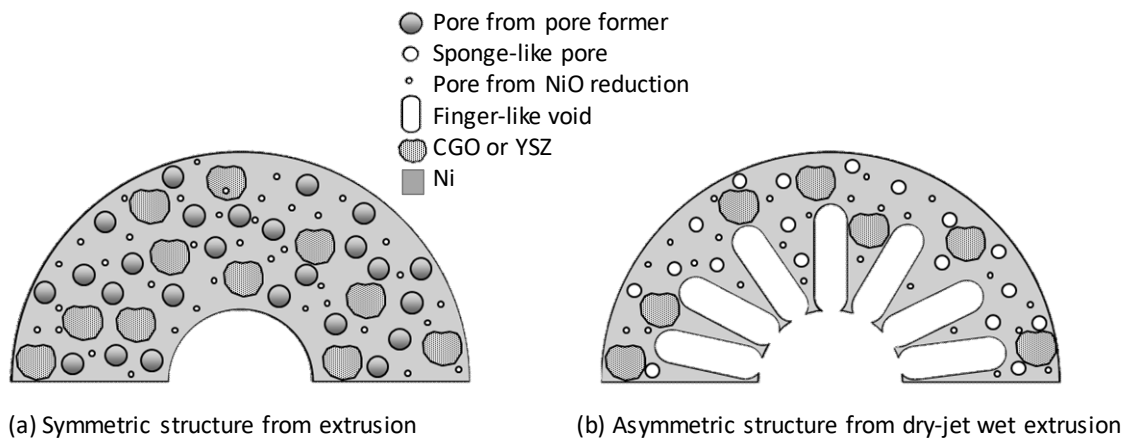


Fig. 2. Schematic diagrams of different structures of MT-SOFCs; (a) Symmetric structure from ram extrusion and, (b) Asymmetric structure from dry-jet wet extrusion [147].

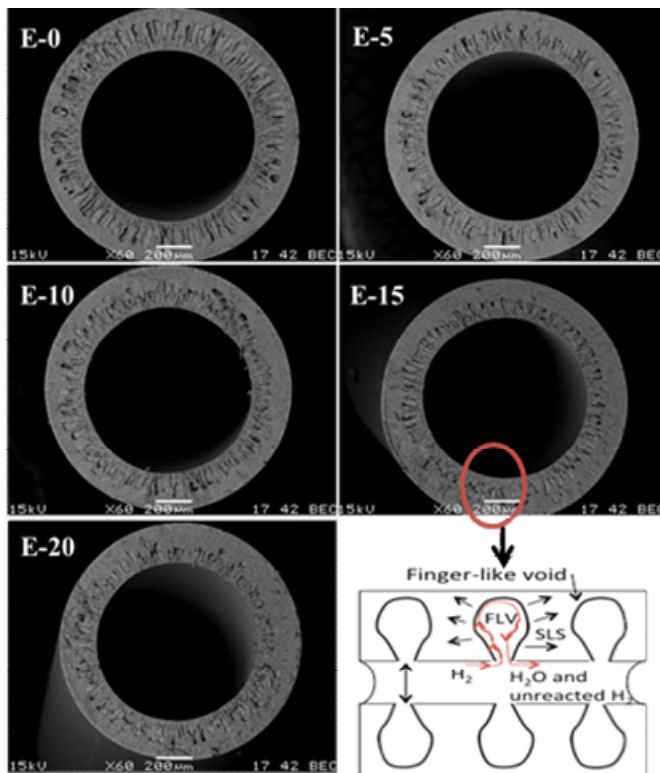


Fig. 3. SEM images of cross section of Ni-CGO anode with different anode structure [55].

The macrostructures of the hollow fibre such as the finger-like void length and the anode thickness are normally controlled during the dope preparation and extrusion process. On the contrary, the microstructure of anode can be tailored during high temperature sintering process. The particles rearrangements during sintering will lead the particles bind together and induces pore channels along the grain boundaries. Then, the pores remain shrinking besides some of them pinch off and isolated at the grain boundaries as the temperature rises. Thus, some of sponge-like pore become smaller and probably eliminated during the sintering process depends on the temperature applied for the sintering. However, macrovoids as finger-like structure are still retained during sintering [148].

After sintering, the reduction of nickel oxide (NiO) phases to Ni phases is performed and this process further promotes the micropores formation due to the removal of oxygen atoms from the NiO crystal structure [149]. Therefore, it can be concluded that three types of pore is expected to form in the anode substrate prepared by the dry-jet wet extrusion technique, which are (a) finger-like voids, (b) sponge-like pores that survived from the sintering process and (c) the pores that created during the reduction of NiO [76].

5. Effect of pores to the fuel cell performance

Finger-like voids and sponge-like regions plays an important role to the anode support. In general, finger-like voids provide less resistance route for the fuel gas and products transportation, while the sponge-like structure provides a large number of TPB for the electrochemical reactions [126] and also give the major support to the hollow fibre [7].

In terms of fuel cell performance, it has been proven that the larger entrance pore size at the finger-like voids in the anode regions together with longer finger-like voids would reduce the fuel gas diffusion resistance into the finger-like voids zone [55]. It can be clearly seen in Figure 4 that the anode structure affected the maximum power density of the fabricated cells. The maximum power density increases with the increases of finger-like void lengths. The highest value was recorded at 2.32 Wcm^{-2} for the cell with 70% finger-like voids lengths (E-5). However, at about 85% finger-like voids thickness (E-20), the number of TPB region and anode conductivity are significantly reduced which eventually impairs the overall cell performance.

The improvement in the power density by the extension of finger-like length can be explained by the micro-view illustration as shown in Figure 3. Micro-channels provided by the finger-like voids structure in anode region

helps to improve the fuel mixing and diffusion in the anode TPB region. Bigger finger-like voids entrance pore is commonly results from longer finger-like voids which gives excellent fuel gas diffusion into the finger-like voids region [104]. Moreover, vortex-flow inside the macro-voids induced by the conical shape of finger-like voids as proposed by Rahman et al. [150] [151]. Hence, the existence of longer voids could improve fuel mixing and subsequently offers better and greater uniform fuel gas distribution throughout the TPB in sponge-like region.

6. Conclusion and Future Direction

According to the interpretations, the anode structure was found to be greatly influenced by the fabrication methods. The anode support prepared by ram extrusion commonly gives symmetric structure while dry-jet wet extrusion technique typically induces the formation of the asymmetric structure which consists of finger-like voids and sponge-like region. Finger-like voids provide a less resistance route for fuel gas and the products transportation whereas sponge-like structure offers a large number of TPB for electrochemical reactions as well as mechanical strength to the hollow fibre. Moreover, dry-jet wet extrusion technique allows adjustments on extrusion parameters which eventually produce controlled structures in anode. Despite the fact that the anode hollow fibre with longer finger-like voids length and high porosity structure give higher gas permeation, it can strongly reduce the substrate's mechanical strength, destroying the TPB areas and ultimately affects the overall performance. Thus, the anode structure is one of the key parameter that has to be considered in order to fabricate a high performance cell.

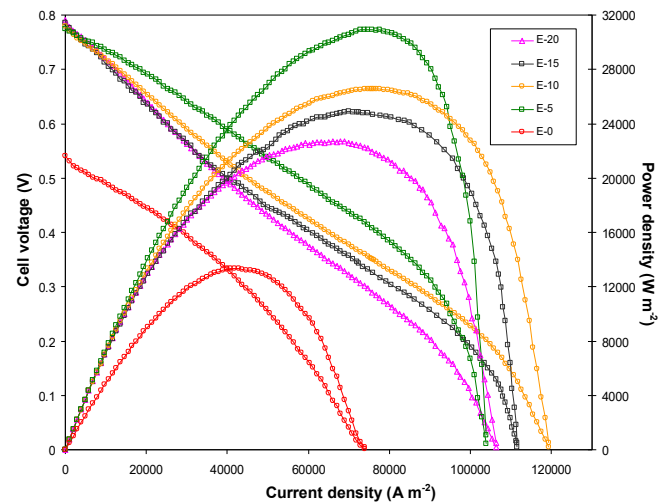


Fig. 4. MT-SOFCs performance with different anode structures [55].

References

- [1] S.C. Singhal, K. Kendall, High Temperature Solid Oxide Fuel Cells, Elsevier Advanced Technology, UK, 2003.
- [2] X. Meng, X. Gong, N. Yang, X. Tan, Y. Yin, Z.-F. Ma, Fabrication of Y2O3-stabilized-ZrO2(YSZ)/La0.8Sr0.2MnO3- α -YSZ dual-layer hollow fibers for the cathode-supported micro-tubular solid oxide fuel cells by a co-spinning/co-sintering technique, J. Power Sources. 237 (2013) 277-284. doi:10.1016/j.jpowsour.2013.03.026.
- [3] C.C. Wei, O.Y. Chen, Y. Liu, K. Li, Ceramic asymmetric hollow fibre membranes—One step fabrication process, J. Memb. Sci. 320 (2008) 191-197. doi:10.1016/j.memsci.2008.04.003.
- [4] N. Droushiotis, U. Doraswami, K. Kanawka, G.H. Kelsall, K. Li, Characterization of NiO-yttria stabilised zirconia (YSZ) hollow fibres for use as SOFC anodes, Solid State Ionics. 180 (2009) 1091-1099. doi:10.1016/j.ssi.2009.04.004.
- [5] N.M. Sammes, Y. Du, Fabrication and Characterization of Tubular Solid Oxide Fuel Cells, Int. J. Appl. Ceram. Technol. 4 (2007) 89-102. doi:10.1111/j.1744-7402.2007.02127.x.
- [6] Y. Liu, M. Mori, Y. Funahashi, Y. Fujishiro, A. Hirano, Development of micro-tubular SOFCs with an improved performance via nano-Ag impregnation for intermediate temperature operation, Electrochem. Commun. 9 (2007) 1918-1923. doi:10.1016/j.elecom.2007.05.003.

- [7] M.H.D. Othman, Z. Wu, N. Droushiotis, G.H. Kelsall, K. Li, K. Kanawka, U. Doraswami, Morphological studies of macrostructure of Ni-CGO anode hollow fibres for intermediate temperature solid oxide fuel cells, *J. Memb. Sci.* 360 (2010) 410–417. doi:<http://dx.doi.org/10.1016/j.memsci.2010.05.040>.
- [8] F. a. Yu, C.C. Wu, T.H. Yeh, J.S. Cherng, Effects of layer thickness on the performance of micro-tubular solid oxide fuel cells made by sequential aqueous electrophoretic deposition, *Int. J. Hydrogen Energy.* (2015) 5–9. doi:[10.1016/j.ijhydene.2015.05.191](https://doi.org/10.1016/j.ijhydene.2015.05.191).
- [9] X.Z. Zhang, Y.Q. Wang, J. Zhang, Q.B. Chang, Y.H. Jiang, J.E. Zhou, Investigation of Cobalt-Free Cathode Material $\text{Ba}_{0.5}\text{Sr}_{0.5}\text{Fe}_{0.8}\text{Cu}_{0.2}\text{O}_{3-\delta}$ for Micro-Tubular SOFC with Asymmetric Structure Anode, *Key Eng. Mater.* 519 (2012) 36–40. doi:[10.4028/www.scientific.net/KEM.519.36](https://doi.org/10.4028/www.scientific.net/KEM.519.36).
- [10] T. Li, Z. Wu, K. Li, Single-step fabrication and characterisations of triple-layer ceramic hollow fibres for micro-tubular solid oxide fuel cells (SOFCs), *J. Memb. Sci.* 449 (2014) 1–8. doi:[10.1016/j.memsci.2013.08.009](https://doi.org/10.1016/j.memsci.2013.08.009).
- [11] H. Sumi, D. Kennouche, K. Yakal-kremiski, T. Suzuki, S.A. Barnett, D.J. Miller, T. Yamaguchi, K. Hamamoto, Y. Fujishiro, Electrochemical and microstructural properties of Ni-(Y2O3)0.08(ZrO2)0.92-(Ce0.9Gd0.1)O1.95 anode-supported microtubular solid oxide fuel cells, *Solid State Ionics.* 285 (2016) 227–233. doi:[10.1016/j.ssi.2015.07.005](https://doi.org/10.1016/j.ssi.2015.07.005).
- [12] S.H. Ahmad, S.M. Jamil, M.H.D. Othman, M.A. Rahman, J. Jaafar, A.F. Ismail, Co-extruded dual-layer hollow fiber with different electrolyte structure for a high temperature micro-tubular solid oxide fuel cell, *Int. J. Hydrogen Energy.* (2016) 1–9. doi:[10.1016/j.ijhydene.2016.06.044](https://doi.org/10.1016/j.ijhydene.2016.06.044).
- [13] T. Suzuki, T. Yamaguchi, Y. Fujishiro, M. Awano, Fabrication and characterization of micro tubular SOFCs for operation in the intermediate temperature, *J. Power Sources.* 160 (2006) 73–77. doi:[10.1016/j.jpowsour.2006.01.037](https://doi.org/10.1016/j.jpowsour.2006.01.037).
- [14] T. Suzuki, K. Hamamoto, T. Yamaguchi, F. Fujishiro, Performance and Energy Efficiency of a Single Microtubular Anode Supported Cell, *Electrochem. Soc.* (2011).
- [15] U. Doraswami, N. Droushiotis, G.H. Kelsall, Modelling effects of current distributions on performance of micro-tubular hollow fibre solid oxide fuel cells, *Electrochim. Acta.* 55 (2010) 3766–3778. doi:[10.1016/j.electacta.2010.01.080](https://doi.org/10.1016/j.electacta.2010.01.080).
- [16] H. Sumi, T. Yamaguchi, K. Hamamoto, T. Suzuki, Y. Fujishiro, Effects of Anode Microstructure on Mechanical and Electrochemical Properties for Anode-Supported Microtubular Solid Oxide Fuel Cells, *J. Am. Ceram. Soc.* 96 (2013) 3584–3588. doi:[10.1111/jace.12603](https://doi.org/10.1111/jace.12603).
- [17] C. Yang, C. Ren, L. Yu, C. Jin, High performance intermediate temperature micro-tubular SOFCs with $\text{Ba}_{0.9}\text{Co}_{0.7}\text{Fe}_{0.2}\text{Nb}_{0.1}\text{O}_{3-\delta}$ as cathode, *Int. J. Hydrogen Energy.* 38 (2013) 15348–15353. doi:[10.1016/j.ijhydene.2013.09.080](https://doi.org/10.1016/j.ijhydene.2013.09.080).
- [18] Ö. Aydın, T. Koshiyama, H. Nakajima, T. Kitahara, In-situ diagnosis and assessment of longitudinal current variation by electrode-segmentation method in anode-supported microtubular solid oxide fuel cells, *J. Power Sources.* 279 (2015) 218–223. doi:[10.1016/j.jpowsour.2014.12.156](https://doi.org/10.1016/j.jpowsour.2014.12.156).
- [19] T. Suzuki, T. Yamaguchi, H. Sumi, K. Hamamoto, Y. Fujishiro, Microtubular solid-oxide fuel cells for low-temperature operation, *Mat. Res. Bull.* 39 (2014) 805–809. doi:[10.1557/mrs.2014.172](https://doi.org/10.1557/mrs.2014.172).
- [20] N. Droushiotis, A. Torabi, M.H.D. Othman, T.H. Etsell, G.H. Kelsall, Effects of lanthanum strontium cobalt ferrite (LSCF) cathode properties on hollow fibre micro-tubular SOFC performances, *J. Appl. Electrochem.* 42 (2012) 517–526. doi:[10.1007/s10800-012-0429-x](https://doi.org/10.1007/s10800-012-0429-x).
- [21] F.D. Grande, A. Thursfield, K. Kanawka, N. Droushiotis, U. Doraswami, K. Li, G. Kelsall, I.S. Metcalfe, Microstructure and performance of novel Ni anode for hollow fibre solid oxide fuel cells, *Solid State Ionics.* 180 (2009) 800–804. doi:[10.1016/j.ssi.2008.12.038](https://doi.org/10.1016/j.ssi.2008.12.038).
- [22] D. Zhou, S. Peng, Y. Wei, Z. Li, H. Wang, Novel asymmetric anode-supported hollow fiber solid oxide fuel cell, *J. Alloys Compd.* 523 (2012) 134–138. doi:[10.1016/j.jallcom.2012.01.120](https://doi.org/10.1016/j.jallcom.2012.01.120).
- [23] T. Suzuki, Y. Takahashi, K. Hamamoto, T. Yamaguchi, Y. Fujishiro, Low temperature processed composite cathodes for Solid-oxide fuel Cells, *Int. J. Hydrogen Energy.* 36 (2011) 10998–11003. doi:[10.1016/j.ijhydene.2011.05.155](https://doi.org/10.1016/j.ijhydene.2011.05.155).
- [24] M.A. Laguna-bercero, A.R. Hanifi, T.H. Etsell, P. Sarkar, Microtubular solid oxide fuel cells with lanthanum strontium manganite infiltrated cathodes, *Int. J. Hydrogen Energy.* 40 (2015) 5469–5474. doi:[10.1016/j.ijhydene.2015.01.060](https://doi.org/10.1016/j.ijhydene.2015.01.060).
- [25] N. Akhtar, S.P. Decent, D. Loghin, K. Kendall, Mixed-reactant, micro-tubular solid oxide fuel cells: An experimental study, *J. Power Sources.* 193 (2009) 39–48. doi:[10.1016/j.jpowsour.2009.01.032](https://doi.org/10.1016/j.jpowsour.2009.01.032).
- [26] L. Zhao, X. Zhang, B. He, B. Liu, C. Xia, Micro-tubular solid oxide fuel cells with graded anodes fabricated with a phase inversion method, *J. Power Sources.* 196 (2011) 962–967. doi:[10.1016/j.jpowsour.2010.08.074](https://doi.org/10.1016/j.jpowsour.2010.08.074).
- [27] J.-J. Sun, Y.-H. Koh, W.-Y. Choi, H.-E. Kim, Fabrication and Characterization of Thin and Dense Electrolyte-Coated Anode Tube Using Thermoplastic Coextrusion, *J. Am. Ceram. Soc.* 89 (2006) 1713–1716. doi:[10.1111/j.1551-2916.2006.00918.x](https://doi.org/10.1111/j.1551-2916.2006.00918.x).
- [28] N. Droushiotis, M.H.D. Othman, U. Doraswami, Z. Wu, G. Kelsall, K. Li, Novel co-extruded electrolyte-anode hollow fibres for solid oxide fuel cells, *Electrochem. Commun.* 11 (2009) 1799–1802. doi:[10.1016/j.elecom.2009.07.022](https://doi.org/10.1016/j.elecom.2009.07.022).
- [29] N. Droushiotis, U. Doraswami, G.H. Kelsall, K. Li, Micro-tubular solid oxide fuel cells fabricated from hollow fibres, *J. Appl. Electrochem.* 41 (2011) 1005–1012. doi:[10.1007/s10800-011-0334-8](https://doi.org/10.1007/s10800-011-0334-8).
- [30] J. Li, Z. Lin, Effects of electrode composition on the electrochemical performance and mechanical property of micro-tubular solid oxide fuel cell, *Int. J. Hydrogen Energy.* 37 (2012) 12925–12940. doi:[10.1016/j.ijhydene.2012.05.075](https://doi.org/10.1016/j.ijhydene.2012.05.075).
- [31] C.M. Dikwal, W. Bujalski, K. Kendall, Characterization of the electrochemical performance of micro-tubular SOFC in partial reduction and oxidation conditions, *J. Power Sources.* 181 (2008) 267–273. doi:[10.1016/j.jpowsour.2007.11.052](https://doi.org/10.1016/j.jpowsour.2007.11.052).
- [32] K. V Galloway, N.M. Sammes, Performance Degradation of Microtubular SOFCs Operating in the Intermediate-Temperature Range, *J. Electrochem. Soc.* 156 (2009) B526–B531.
- [33] H. Sumi, T. Yamaguchi, K. Hamamoto, T. Suzuki, Y. Fujishiro, T. Matsui, K. Eguchi, AC impedance characteristics for anode-supported microtubular solid oxide fuel cells, *Electrochim. Acta.* 67 (2012) 159–165. doi:[10.1016/j.electacta.2012.02.021](https://doi.org/10.1016/j.electacta.2012.02.021).
- [34] T. Suzuki, Y. Funahashi, T. Yamaguchi, Y. Fujishiro, M. Awano, Effect of anode microstructure on the performance of micro tubular SOFCs, *Solid State Ionics.* 180 (2009) 546–549. doi:[10.1016/j.ssi.2008.09.023](https://doi.org/10.1016/j.ssi.2008.09.023).
- [35] M.H.D. Othman, N.N. Droushiotis, Z. Wu, K. Kanawka, G. Kelsall, K. Li, Electrolyte thickness control and its effect on electrolyte/anode dual-layer hollow fibres for micro-tubular solid oxide fuel cells, *J. Memb. Sci.* 365 (2010) 382–388. doi:[10.1016/j.memsci.2010.09.036](https://doi.org/10.1016/j.memsci.2010.09.036).
- [36] S. Peng, D. Zhou, Y. Wei, Z. Li, H. Wang, A novel U-shaped anode-supported hollow fiber solid oxide fuel cell with considerable thermal cycling performance and stability, *J. Memb. Sci.* 417–418 (2012) 80–86. doi:[10.1016/j.memsci.2012.06.016](https://doi.org/10.1016/j.memsci.2012.06.016).
- [37] S. Hashimoto, H. Nishino, Y. Liu, K. Asano, M. Mori, Y. Funahashi, Y. Fujishiro, The electrochemical cell temperature estimation of micro-tubular SOFCs during the power generation, *J. Power Sources.* 181 (2008) 244–250. doi:[10.1016/j.jpowsour.2007.12.104](https://doi.org/10.1016/j.jpowsour.2007.12.104).
- [38] R. Campana, R.I. Merino, a. Larrea, I. Villarreal, V.M. Orera, Fabrication, electrochemical characterization and thermal cycling of anode supported microtubular solid oxide fuel cells, *J. Power Sources.* 192 (2009) 120–125. doi:[10.1016/j.jpowsour.2008.12.107](https://doi.org/10.1016/j.jpowsour.2008.12.107).
- [39] T. Liu, Y. Wang, C. Ren, S. Fang, Y. Mao, F. Chen, Novel light-weight, high-performance anode-supported microtubular solid oxide fuel cells with an active anode functional layer, *J. Power Sources.* 293 (2015) 852–858. doi:[10.1016/j.jpowsour.2015.06.018](https://doi.org/10.1016/j.jpowsour.2015.06.018).
- [40] M.J. López-Robledo, M.A. Laguna-Bercero, J. Silva, V.M. Orera, A. Larrea, Electrochemical performance of intermediate temperature micro-tubular solid oxide fuel cells using porous ceria barrier layers, *Ceram. Int.* 41 (2015) 7651–7660. doi:[10.1016/j.ceramint.2015.02.093](https://doi.org/10.1016/j.ceramint.2015.02.093).
- [41] T. Yamaguchi, T. Suzuki, S. Shimizu, Y. Fujishiro, M. Awano, Examination of wet coating and co-sintering technologies for micro-SOFCs fabrication, *J. Memb. Sci.* 300 (2007) 45–50. doi:[10.1016/j.memsci.2007.05.002](https://doi.org/10.1016/j.memsci.2007.05.002).
- [42] T. Yamaguchi, K. V. Galloway, J. Yoon, N.M. Sammes, Electrochemical characterizations of microtubular solid oxide fuel cells under a long-term testing at intermediate temperature operation, *J. Power Sources.* 196 (2011) 2627–2630. doi:[10.1016/j.jpowsour.2010.11.061](https://doi.org/10.1016/j.jpowsour.2010.11.061).
- [43] C. Yang, C. Jin, F. Chen, Micro-tubular solid oxide fuel cells fabricated by phase-inversion method, *Electrochem. Commun.* 12 (2010) 657–660. doi:[10.1016/j.elecom.2010.02.024](https://doi.org/10.1016/j.elecom.2010.02.024).
- [44] X. Meng, X. Gong, N. Yang, Y. Yin, X. Tan, Carbon-resistant Ni-YSZ / Cu e CeO 2 -YSZ dual-layer hollow fiber anode for micro tubular solid oxide fuel cell, *Int. J. Hydrogen Energy.* 39 (2014) 3879–3886. doi:[10.1016/j.ijhydene.2013.12.168](https://doi.org/10.1016/j.ijhydene.2013.12.168).
- [45] X. Meng, X. Gong, Y. Yin, N. Yang, X. Tan, Z.-F. Ma, Effect of the co-spun anode functional layer on the performance of the direct-methane microtubular solid oxide fuel cells, *J. Power Sources.* 247 (2014) 587–593. doi:[10.1016/j.jpowsour.2013.08.133](https://doi.org/10.1016/j.jpowsour.2013.08.133).
- [46] C. Jin, C. Yang, F. Chen, Effects on microstructure of NiO-YSZ anode support fabricated by phase-inversion method, *J. Memb. Sci.* 363 (2010) 250–255. doi:[10.1016/j.memsci.2010.07.044](https://doi.org/10.1016/j.memsci.2010.07.044).
- [47] N. Yang, X. Tan, Z. Ma, A. Thursfield, Fabrication and Characterization of Ce 0.8 Sm 0.2 O 1.9 Microtubular Dual-Structured Electrolyte Membranes for Application in Solid Oxide Fuel Cell Technology, *J. Am. Ceram. Soc.* 92 (2009) 2544–2550. doi:[10.1111/j.1551-2916.2009.03267.x](https://doi.org/10.1111/j.1551-2916.2009.03267.x).
- [48] X. Zhang, B. Lin, Y. Ling, Y. Dong, G. Meng, X. Liu, An anode-supported hollow fiber solid oxide fuel cell with $(\text{Pr}_{0.5}\text{Nd}_{0.5})_{0.7}\text{Sr}_{0.3}\text{MnO}_{3-\delta}$ -YSZ composite cathode, *J. Alloys Compd.* 497 (2010) 386–389. doi:[10.1016/j.jallcom.2010.03.084](https://doi.org/10.1016/j.jallcom.2010.03.084).
- [49] B. Liang, T. Suzuki, K. Hamamoto, T. Yamaguchi, Y. Fujishiro, M. Awano, B.J. Ingram, J.D. Cater, Effect of the adding ferrum in nickel/GDC anode-supported solid-oxide fuel cell in the intermediate temperature, *Int. J. Hydrogen Energy.* 36 (2011) 10975–10980. doi:[10.1016/j.ijhydene.2011.05.142](https://doi.org/10.1016/j.ijhydene.2011.05.142).
- [50] C. Ren, T. Liu, P. Maturavongsadit, J.A. Luckanagul, F. Chen, Effect of PEG additive on anode microstructure and cell performance of anode-supported MT-SOFCs fabricated by phase inversion method, *J. Power Sources.* 279 (2015) 774–780. doi:[10.1016/j.jpowsour.2014.12.140](https://doi.org/10.1016/j.jpowsour.2014.12.140).
- [51] C. Jin, J. Liu, L. Li, Y. Bai, Electrochemical properties analysis of tubular NiO-YSZ anode-supported SOFCs fabricated by the phase-inversion method, *J. Memb. Sci.* 341 (2009) 233–237. doi:[10.1016/j.memsci.2009.06.012](https://doi.org/10.1016/j.memsci.2009.06.012).
- [52] M. Torrell, A. Morata, P. Kayser, M. Kendall, K. Kendall, A. Tarancon, Performance and long term degradation of 7 W micro-tubular solid oxide fuel cells for portable applications, *J. Power Sources.* 285 (2015) 439–448. doi:[10.1016/j.jpowsour.2015.03.030](https://doi.org/10.1016/j.jpowsour.2015.03.030).

- [53] A. Sarikaya, V. Petrovsky, F. Dogan, Effect of the anode microstructure on the enhanced performance of solid oxide fuel cells, *Int. J. Hydrogen Energy*. 37 (2012) 11370–11377. doi:10.1016/j.ijhydene.2012.05.007.
- [54] N. Akhtar, K. Kendall, Silver modified cathode for a micro-tubular, single-chamber solid oxide fuel cell, *Int. J. Hydrogen Energy*. 36 (2011) 773–778. doi:10.1016/j.ijhydene.2010.10.043.
- [55] M.H.D. Othman, N. Droushiotis, Z. Wu, G. Kelsall, K. Li, Dual-layer hollow fibres with different anode structures for micro-tubular solid oxide fuel cells, *J. Power Sources*. 205 (2012) 272–280. doi:http://dx.doi.org/10.1016/j.jpowsour.2012.01.002.
- [56] M. Casarin, V.M. Sglavo, Effect of the Current Collector on Performance of Anode-Supported Microtubular Solid Oxide Fuel Cells, *J. Fuel Cell Sci. Technol.* 12 (2015) 031005. doi:10.1115/1.4029875.
- [57] B.R. Roy, N.M. Sammes, T. Suzuki, Y. Funahashi, M. Awano, Mechanical properties of micro-tubular solid oxide fuel cell anodes, *J. Power Sources*. 188 (2009) 220–224. doi:10.1016/j.jpowsour.2008.11.076.
- [58] M.H.D. Othman*, S.M. Jamil, M.A. Rahman, J. Jaafar, A.F. Ismail, Electrolyte Hollow Fiber as Support via Phase-Inversion-Based Extrusion/Sintering Technique for Micro Tubular Solid Oxide Fuel Cell, in: M.R. Cesário, D.A. de Maced (Eds.), *Front. Ceram. Sci. Vol 1 (Functional Mater. Solid Oxide Fuel Cells Process. Microstruct. Performance)*, Bentham Science Publishers, Sharjah, UAE., 2017: pp. 107–131.
- [59] S.L. Zhang, C.-X. Li, C.-J. Li, G.-J. Yang, Microstructure and Properties of Porous Ni₅₀Cr₅₀-Al₂O₃ Cermet Support for Solid Oxide Fuel Cells, *J. Therm. Spray Technol.* 22 (2012) 158–165. doi:10.1007/s11666-012-9868-5.
- [60] T. Suzuki, T. Yamaguchi, K. Hamamoto, Y. Fujishiro, M. Awano, N.M. Sammes, A functional layer for direct use of hydrocarbon fuel in low temperature solid-oxide fuel cells, *Energy Environ. Sci.* 4 (2011) 940. doi:10.1039/c0ee00231c.
- [61] T. Li, Z. Wu, K. Li, High-efficiency, nickel-ceramic composite anode current collector for micro-tubular solid oxide fuel cells, *J. Power Sources*. 280 (2015) 446–452. doi:10.1016/j.jpowsour.2015.01.130.
- [62] T. Suzuki, Y. Funahashi, T. Yamaguchi, Y. Fujishiro, M. Awano, Development of Fabrication/Integration Technology for Micro Tubular SOFCs, Elsevier Inc., 2009. doi:10.1016/B978-0-12-374713-6.00004-4.
- [63] B. Liang, T. Suzuki, K. Hamamoto, T. Yamaguchi, Y. Fujishiro, M. Awano, B.J. Ingram, J.D. Cater, Investigation of shrinkage behavior of Ni-Fe bimetallic anode tube support and the densification of electrolyte using co-sintering temperature, *J. Power Sources*. 196 (2011) 9124–9129. doi:10.1016/j.jpowsour.2011.05.039.
- [64] J. Xiao, W. Sun, Z. Tao, Z. Zhu, W. Liu, Fabrication and Electrochemical Characterization of Anode-Supported Microtubular Solid Oxide Fuel Cells Based on Ce 0.8 Sm 0.2 O 2-δ Electrolytes, *Int. J. Appl. Ceram. Technol.* 9 (2012) 1064–1070. doi:10.1111/j.1744-7402.2011.02737.x.
- [65] J. Ding, J. Liu, W. Yuan, Y. Zhang, Slip casting combined with colloidal spray coating in fabrication of tubular anode-supported solid oxide fuel cells, *J. Eur. Ceram. Soc.* 28 (2008) 3113–3117. doi:10.1016/j.jeurceramsoc.2008.05.033.
- [66] J.S. Cheng, C.C. Wu, F. a. Yu, T.H. Yeh, Anode morphology and performance of micro-tubular solid oxide fuel cells made by aqueous electrophoretic deposition, *J. Power Sources*. 232 (2013) 353–356. doi:10.1016/j.jpowsour.2013.01.069.
- [67] B. He, Y. Ling, J. Xu, L. Zhao, J. Cheng, Effect of nickel impregnated hollow fiber anode for micro tubular solid oxide fuel cells, *J. Power Sources*. 258 (2014) 391–394. doi:10.1016/j.jpowsour.2014.02.059.
- [68] T. Li, Z. Wu, K. Li, Co-extrusion of electrolyte/anode functional layer/anode triple-layer ceramic hollow fibres for micro-tubular solid oxide fuel cells-electrochemical performance study, *J. Power Sources*. 273 (2015) 999–1005. doi:10.1016/j.memsci.2013.08.009.
- [69] N. Droushiotis, M.H.D. Othman, U. Doraswami, K. Li, G. Kelsall, Co-Extrusion / Phase Inversion / Co-Sintering for Fabrication of Hollow Fiber Solid Oxide Fuel Cells, *ECS Trans.* 25 (2009) 665–672. doi:10.1149/1.3205580.
- [70] C. Yang, W. Li, S. Zhang, L. Bi, R. Peng, C. Chen, W. Liu, Fabrication and characterization of an anode-supported hollow fiber SOFC, *J. Power Sources*. 187 (2009) 90–92. doi:10.1016/j.jpowsour.2008.10.069.
- [71] T. Suzuki, Y. Funahashi, Z. Hasan, T. Yamaguchi, Y. Fujishiro, M. Awano, Fabrication of needle-type micro SOFCs for micro power devices, *Electrochem. Commun.* 10 (2008) 1563–1566. doi:10.1016/j.elecom.2008.08.016.
- [72] F. Calise, G. Restuccia, N.M. Sammes, Experimental analysis of performance degradation of micro-tubular solid oxide fuel cells fed by different fuel mixtures, *J. Power Sources*. 196 (2011) 301–312. doi:10.1016/j.jpowsour.2010.06.010.
- [73] Y.-W. Sin, K. Galloway, B. Roy, N.M. Sammes, J.-H. Song, T. Suzuki, M. Awano, The properties and performance of micro-tubular (less than 2.0mm O.D.) anode supported solid oxide fuel cell (SOFC), *Int. J. Hydrogen Energy*. 36 (2011) 1882–1889. doi:10.1016/j.ijhydene.2009.12.167.
- [74] S.M. Jamil, M.H.D. Othman, M.A. Rahman, J. Jaafar, M.A. Mohamed, M.Z.M. Yusop, A.F. Ismail, M. Tanemura, Dual-layer hollow fiber MT-SOFC using lithium doped CGO electrolyte fabricated via phase-inversion technique, *Solid State Ionics*. 304 (2017) 113–125. doi:10.1016/j.ssi.2017.03.031.
- [75] P. Sarkar, L. Yamarte, H. Rho, L. Johanson, Anode-Supported Tubular Micro-Solid Oxide Fuel Cell, *Int. J. Appl. Ceram. Technol.* 4 (2007) 103–108. doi:10.1111/j.1744-7402.2007.02129.x.
- [76] M.H.D. Othman, Z. Wu, N. Droushiotis, G. Kelsall, K. Li, Morphological studies of macrostructure of Ni-CGO anode hollow fibres for intermediate temperature solid oxide fuel cells, *J. Memb. Sci.* 360 (2010) 410–417. doi:doi:10.1016/j.memsci.2010.05.040.
- [77] N.-T. Yang, X. Tan, X.-X. Meng, Y. Yin, Z.-F. Ma, Fabrication of anode supported micro tubular SOFCs by dip-coating process on NiO/YSZ hollow fibers, *ECS Trans.* 25 (2009) 881–888.
- [78] T. Suzuki, Y. Funahashi, T. Yamaguchi, Y. Fujishiro, M. Awano, Performance of the micro-SOFC module using submillimeter tubular cells, *J. Electrochem. Soc.* 156 (2009) B318–B321.
- [79] T. Suzuki, Y. Funahashi, T. Yamaguchi, Y. Fujishiro, M. Awano, Anode-supported micro tubular SOFCs for advanced ceramic reactor system, *J. Power Sources*. 171 (2007) 92–95. doi:10.1016/j.jpowsour.2007.01.003.
- [80] N. Droushiotis, F.D. Grande, M.H.D. Othman, K. Kanawka, U. Doraswami, I. Metcalfe, K. Li, G. Kelsall, Comparison Between Anode-Supported and Electrolyte-Supported Ni-CGO-LSCF Micro-tubular Solid Oxide Fuel Cells, *Fuel Cells*. 14 (2014) 200–211. doi:10.1002/fuce.201300024.
- [81] X. Zhang, B. Lin, Y. Ling, Y. Dong, G. Meng, X. Liu, L. Zhao, An anode-supported micro-tubular solid oxide fuel cell with redox stable composite cathode, *Int. J. Hydrogen Energy*. 35 (2010) 8654–8662. doi:10.1016/j.ijhydene.2010.05.122.
- [82] D. Cui, M. Cheng, Thermal stress modeling of anode supported micro-tubular solid oxide fuel cell, *J. Power Sources*. 192 (2009) 400–407. doi:10.1016/j.jpowsour.2009.03.046.
- [83] M.H.D. Othman, N. Droushiotis, Z. Wu, G. Kelsall, K. Li, High-Performance, Anode-Supported, Microtubular SOFC Prepared from Single-Step-Fabricated, Dual-Layer Hollow Fibers, *Adv. Mater.* 23 (2011) 2480–2483. doi:http://dx.doi.org/10.1016/j.jpowsour.2011.02.006.
- [84] T. Suzuki, Y. Funahashi, T. Yamaguchi, Y. Fujishiro, M. Awano, New Stack Design of Micro-tubular SOFCs for Portable Power Sources, *Fuel Cells*. 8 (2008) 381–384. doi:10.1002/fuce.200800047.
- [85] S. Zhen, W. Sun, G. Tang, D. Rooney, K. Sun, X. Ma, Fabrication and evaluation of NiO / Y 2 O 3 -stabilized-ZrO 2 hollow fibers for anode-supported micro-tubular solid oxide fuel cells, *Ceram. Int.* 42 (2016) 8559–8564. doi:10.1016/j.ceramint.2016.02.083.
- [86] T. Suzuki, M.H. Zahir, T. Yamaguchi, Y. Fujishiro, M. Awano, N.N.M. Sammes, Fabrication of micro-tubular solid oxide fuel cells with a single-grain-thick yttria stabilized zirconia electrolyte, *J. Power Sources*. 195 (2010) 7825–7828. doi:10.1016/j.jpowsour.2009.11.149.
- [87] J.S. Cheng, M.Y. Ho, T.H. Yeh, W.H. Chen, Anode-supported micro-tubular SOFCs made by aqueous electrophoretic deposition, *Ceram. Int.* 38 (2012) S477–S480. doi:10.1016/j.ceramint.2011.05.057.
- [88] F. Zhao, C. Jin, C. Yang, S. Wang, F. Chen, Fabrication and characterization of anode-supported micro-tubular solid oxide fuel cell based on BaZr_{0.1}Ce_{0.7}Y_{0.1}Yb_{0.1}O_{3-δ} electrolyte, *J. Power Sources*. 196 (2011) 688–691. doi:10.1016/j.jpowsour.2010.07.058.
- [89] M. Morales, M.E. Navarro, X.G. Capdevila, J.J. Roa, M. Segarra, Processing of graded anode-supported micro-tubular SOFCs based on samaria-doped ceria via gel-casting and spray-coating, *Ceram. Int.* 38 (2012) 3713–3722. doi:10.1016/j.ceramint.2012.01.015.
- [90] S.M. Jamil, M.H.D. Othman, M.A. Rahman, J. Jaafar, A.F. Ismail, Anode supported micro-tubular SOFC fabricated with mixed particle size electrolyte via phase-inversion technique, *Int. J. Hydrogen Energy*. 42 (2017) 9188–9201. doi:10.1016/j.ijhydene.2016.05.016.
- [91] C. Ren, S. Wang, T. Liu, Y. Lin, F. Chen, Fabrication of micro-tubular solid oxide fuel cells using sulfur-free polymer binder via a phase inversion method, *J. Power Sources*. 290 (2015) 1–7. doi:10.1016/j.jpowsour.2015.04.057.
- [92] C. Ren, Fabrication and characterization of anode-supported micro-tubular solid oxide fuel cell by phase inversion method, University of South Carolina, 2015.
- [93] T. Yamaguchi, N. Sammes, Anode performance control of micro-tubular SOFC via wet coating method, *Int. J. Hydrogen Energy*. 36 (2011) 7656–7660. doi:10.1016/j.ijhydene.2011.03.125.
- [94] A. Mat, M. Canavar, B. Timurkutluk, Y. Kaplan, Investigation of micro-tube solid oxide fuel cell fabrication using extrusion method, *Int. J. Hydrogen Energy*. 41 (2016) 10037–10043. doi:10.1016/j.ijhydene.2015.12.203.
- [95] N.M. Sammes, Y. Du, R. Bove, Design and fabrication of a 100W anode supported micro-tubular SOFC stack, *J. Power Sources*. 145 (2005) 428–434. doi:10.1016/j.jpowsour.2005.01.079.
- [96] T. Suzuki, Y. Funahashi, T. Yamaguchi, Y. Fujishiro, M. Awano, Fabrication and characterization of micro tubular SOFCs for advanced ceramic reactors, *J. Alloys Compd.* 451 (2008) 632–635. doi:10.1016/j.jallcom.2007.04.149.
- [97] W. Sun, Z. Wang, J. Qiao, K. Sun, Enhancing Anode-Supported Micro-Tubular Solid Oxide Fuel Cell Performance by Adding Anode Functional Layer, (n.d.) 2014.
- [98] M.H.D. Othman, Z. Wu, N. Droushiotis, U. Doraswami, G. Kelsall, K. Li, Single-step fabrication and characterisations of electrolyte/anode dual-layer hollow fibres for micro-tubular solid oxide fuel cells, *J. Memb. Sci.* 351 (2010) 196–204. doi:10.1016/j.memsci.2010.01.050.
- [99] S. Lee, T. Lim, R. Song, D. Shin, S. Dong, Development of a 700W anode-supported micro-tubular SOFC stack for APU applications, *Int. J. Hydrogen Energy*. 33 (2008) 2330–2336. doi:10.1016/j.ijhydene.2008.02.034.
- [100] W. Sun, N. Zhang, Y. Mao, K. Sun, Facile one-step fabrication of dual-pore anode for planar solid oxide fuel cell by the phase inversion, *Electrochem. Commun.* 22 (2012) 41–44. doi:10.1016/j.elecom.2012.05.026.
- [101] M.H.D. Othman, N. Droushiotis, Z. Wu, G. Kelsall, K. Li, Novel fabrication technique of hollow fibre support for micro-tubular solid oxide fuel cells, *J. Power*

- Sources. 196 (2011) 5035–5044. doi:<http://dx.doi.org/10.1016/j.jpowsour.2011.02.006>.
- [102] C. Yang, C. Jin, M. Liu, F. Chen, Intermediate temperature micro-tubular SOFCs with enhanced performance and thermal stability, *Electrochem. Commun.* 34 (2013) 231–234. doi:[10.1016/j.elecom.2013.06.015](https://doi.org/10.1016/j.elecom.2013.06.015).
- [103] C. Chen, M. Liu, L. Yang, M. Liu, Anode-supported micro-tubular SOFCs fabricated by a phase-inversion and dip-coating process, *Int. J. Hydrogen Energy*. 36 (2011) 5604–5610. doi:[10.1016/j.ijhydene.2011.02.016](https://doi.org/10.1016/j.ijhydene.2011.02.016).
- [104] Y.Q. Xu, L.L. Wang, Q.W. Zhang, Effect of Thermal Load on Mechanical Properties of Ni/YSZ Anode Support Micro Tubular Solid Oxide Fuel Cell, *Adv. Mater. Res.* 295–297 (2011) 2037–2040. doi:[10.4028/www.scientific.net/AMR.295-297.2037](https://doi.org/10.4028/www.scientific.net/AMR.295-297.2037).
- [105] K. Zheng, A. Gorzkowska-Sobaś, K. Świerczek, Evaluation of Ln₂CuO₄ (Ln: La, Pr, Nd) oxides as cathode materials for IT-SOFCs, *Mater. Res. Bull.* 47 (2012) 4089–4095. doi:[10.1016/j.materresbull.2012.08.072](https://doi.org/10.1016/j.materresbull.2012.08.072).
- [106] X. Xi, A. Kondo, T. Kozawa, M. Naito, LSCF–GDC composite particles for solid oxide fuel cells cathodes prepared by facile mechanical method, *Adv. Powder Technol.* 27 (2016) 646–651. doi:[10.1016/j.apt.2016.02.022](https://doi.org/10.1016/j.apt.2016.02.022).
- [107] H. Wang, X. Liu, H. Bi, S. Yu, F. Han, J. Sun, L. Zhu, Effects of NiO on the conductivity of Ce_{0.85}Sm_{0.15}O_{1.925} and on electrochemical properties of the cathode / electrolyte interface, *J. Power Sources*. 320 (2016) 86–93. doi:[10.1016/j.jpowsour.2016.04.074](https://doi.org/10.1016/j.jpowsour.2016.04.074).
- [108] M. Meng, B. Meng, X. Tan, N. Yang, Z.-F. Ma, Synthesis and properties of Ba_{0.5}Sr_{0.5}(Co_{0.6}Zr_{0.2})Fe_{0.2}O_{3-δ} perovskite cathode material for intermediate temperature solid-oxide fuel cells, *Mater. Res. Bull.* 44 (2009) 1293–1297. doi:[10.1016/j.materresbull.2008.12.015](https://doi.org/10.1016/j.materresbull.2008.12.015).
- [109] B. Huang, X. Zhu, H. Nie, Y. Niu, Y. Li, N. Cheng, Comparison of the electrochemical properties of impregnated and functionally gradient LaNi_{0.6}Fe_{0.4}O₃–Gd_{0.2}Ce_{0.8}O₂ composite cathodes for Solid Oxide Fuel Cell, *J. Power Sources*. 235 (2013) 20–28. doi:[10.1016/j.jpowsour.2013.02.010](https://doi.org/10.1016/j.jpowsour.2013.02.010).
- [110] T. Van Gestel, D. Sebold, H.P. Buchkremer, Processing of 8YSZ and CGO thin film electrolyte layers for intermediate- and low-temperature SOFCs, *J. Eur. Ceram. Soc.* 35 (2015) 1505–1515. doi:[10.1016/j.jeurceramsoc.2014.11.017](https://doi.org/10.1016/j.jeurceramsoc.2014.11.017).
- [111] S. Lee, H.S. Song, S.H. Hyun, J. Kim, J. Moon, Interlayer-free nanostructured La_{0.58}Sr_{0.4}Co_{0.2}Fe_{0.8}O_{3-δ} cathode on scandium stabilized zirconia electrolyte for intermediate-temperature solid oxide fuel cells, *J. Power Sources*. 187 (2009) 74–79. doi:[10.1016/j.jpowsour.2008.10.101](https://doi.org/10.1016/j.jpowsour.2008.10.101).
- [112] A. Torabi, T.H. Etsell, P. Sarkar, Dip coating fabrication process for micro-tubular SOFCs, *Solid State Ionics*. 192 (2011) 372–375. doi:[10.1016/j.ssi.2010.09.050](https://doi.org/10.1016/j.ssi.2010.09.050).
- [113] K. Kanawka, F.D. Grande, Z. Wu, A. Thursfield, D. Ivey, I. Metcalfe, G. Kelsall, K. Li, Microstructure and Performance Investigation of a Solid Oxide Fuel Cells Based on Highly Asymmetric YSZ Microtubular Electrolytes, *Ind. Eng. Chem. Res.* 49 (2010) 6062–6068. doi:[10.1021/ie1002558](https://doi.org/10.1021/ie1002558).
- [114] Q.X. Fu, F. Tietz, D. Stöver, La_{0.4}Sr_{0.6}Ti_{1-x}Mn_xO_{3-δ} Perovskites as Anode Materials for Solid Oxide Fuel Cells, *J. Electrochem. Soc.* 153 (2006) D74–D83. doi:[10.1149/1.2170585](https://doi.org/10.1149/1.2170585).
- [115] T. Yamaguchi, S. Shimizu, T. Suzuki, Y. Fujishiro, M. Awano, Fabrication and characterization of high performance cathode supported small-scale SOFC for intermediate temperature operation, *Electrochem. Commun.* 10 (2008) 1381–1383. doi:[10.1016/j.elecom.2008.07.013](https://doi.org/10.1016/j.elecom.2008.07.013).
- [116] T. Yamaguchi, S. Shimizu, T. Suzuki, Y. Fujishiro, M. Awano, Fabrication and evaluation of a novel cathode-supported honeycomb SOFC stack, *Mater. Lett.* 63 (2009) 2577–2580. doi:[10.1016/j.matlet.2009.09.009](https://doi.org/10.1016/j.matlet.2009.09.009).
- [117] K. Huang, S.C. Singhal, Cathode-supported tubular solid oxide fuel cell technology: A critical review, *J. Power Sources*. 237 (2013) 84–97. doi:[10.1016/j.jpowsour.2013.03.001](https://doi.org/10.1016/j.jpowsour.2013.03.001).
- [118] T. Yamaguchi, S. Shimizu, T. Suzuki, Y. Fujishiro, M. Awano, Fabrication and evaluation of cathode-supported small scale SOFCs, *Mater. Lett.* 62 (2008) 1518–1520. doi:[10.1016/j.matlet.2007.09.037](https://doi.org/10.1016/j.matlet.2007.09.037).
- [119] Y. Liu, S.-I. Hashimoto, H. Nishino, K. Takei, M. Mori, T. Suzuki, Y. Funahashi, Fabrication and characterization of micro-tubular cathode-supported SOFC for intermediate temperature operation, *J. Power Sources*. 174 (2007) 95–102. doi:[10.1016/j.jpowsour.2007.08.101](https://doi.org/10.1016/j.jpowsour.2007.08.101).
- [120] X. Meng, N. Yang, X. Gong, Y. Yin, Z.-F. Ma, X. Tan, Z. Shao, S. Liu, Novel cathode-supported hollow fibers for light weight micro-tubular solid oxide fuel cells with an active cathode functional layer, *J. Mater. Chem. A*. 3 (2015) 1017–1022. doi:[10.1039/C4TA04635H](https://doi.org/10.1039/C4TA04635H).
- [121] T. Suzuki, B. Liang, T. Yamaguchi, H. Sumi, K. Hamamoto, Y. Fujishiro, N.M. Sammes, Performance of Ni-based Anode-Supported SOFCs with Doped Ceria Electrolyte at Low Temperatures Between 294 and 542°C, *Int. J. Appl. Ceram. Technol.* 12 (2015) 358–362. doi:[10.1111/ijac.12163](https://doi.org/10.1111/ijac.12163).
- [122] S. Primdahl, B.F. Sørensen, M. Mogensen, Effect of Nickel Oxide/Yttria-Stabilized Zirconia Anode Precursor Sintering Temperature on the Properties of Solid Oxide Fuel Cells, *J. Am. Ceram. Soc.* 83 (2004) 489–494. doi:[10.1111/j.1151-2916.2000.tb01222.x](https://doi.org/10.1111/j.1151-2916.2000.tb01222.x).
- [123] T. Kawashima, S. Miyoshi, Y. Shibuta, S. Yamaguchi, Particle size dependence of polarization of Ni/YSZ cermet anodes for solid oxide fuel cells, *J. Power Sources*. 234 (2013) 147–153. doi:[10.1016/j.jpowsour.2013.01.125](https://doi.org/10.1016/j.jpowsour.2013.01.125).
- [124] Y.-G. Choi, J.-Y. Park, H. Song, H.-R. Kim, J.-W. Son, J.-H. Lee, H.-J. Je, B.-K. Kim, H.-W. Lee, K.J. Yoon, Microstructure–polarization relations in nickel/gadolinia-doped ceria anode for intermediate-temperature solid oxide fuel cells, *Ceram. Int.* 39 (2013) 4713–4718. doi:[10.1016/j.ceramint.2012.11.020](https://doi.org/10.1016/j.ceramint.2012.11.020).
- [125] J.J. Haslam, A.-Q. Pham, B.W. Chung, J.F. DiCarlo, R.S. Glass, Effects of the Use of Pore Formers on Performance of an Anode Supported Solid Oxide Fuel Cell, *J. Am. Ceram. Soc.* 88 (2005) 513–518. doi:[10.1111/j.1551-2916.2005.00097.x](https://doi.org/10.1111/j.1551-2916.2005.00097.x).
- [126] U. Doraswami, P. Shearing, N. Droushiotis, K. Li, N.P. Brandon, G.H. Kelsall, Modelling the effects of measured anode triple-phase boundary densities on the performance of micro-tubular hollow fiber SOFCs, *Solid State Ionics*. 192 (2011) 494–500. doi:[10.1016/j.ssi.2009.10.013](https://doi.org/10.1016/j.ssi.2009.10.013).
- [127] T. Suzuki, T. Yamaguchi, H. Sumi, K. Hamamoto, Y. Fujishiro, Low temperature operable micro-tubular SOFCs using Gd doped ceria electrolyte and Ni based anode, John Wiley & Sons, Inc., Hoboken, NJ, USA, 2015. doi:[10.1002/9781119040637.ch10](https://doi.org/10.1002/9781119040637.ch10).
- [128] J. Lee, The impact of anode microstructure on the power generating characteristics of SOFC, *Solid State Ionics*. 158 (2003) 225–232. doi:[10.1016/S0167-2738\(02\)00915-3](https://doi.org/10.1016/S0167-2738(02)00915-3).
- [129] H. Sumi, T. Yamaguchi, K. Hamamoto, T. Suzuki, Y. Fujishiro, Electrochemical analysis for anode-supported microtubular solid oxide fuel cells in partial reducing and oxidizing conditions, *Solid State Ionics*. 262 (2014) 407–410. doi:[10.1016/j.ssi.2014.01.012](https://doi.org/10.1016/j.ssi.2014.01.012).
- [130] J.-H. Song, S.-I. Park, J.-H. Lee, H.-S. Kim, Fabrication characteristics of an anode-supported thin-film electrolyte fabricated by the tape casting method for IT-SOFC, *J. Mater. Process. Technol.* 198 (2008) 414–418. doi:[10.1016/j.jmatprotec.2007.07.030](https://doi.org/10.1016/j.jmatprotec.2007.07.030).
- [131] Y.Q. Xu, L.L. Wang, Q.W. Zhang, Residual Stress and Thermal Stress in Ni/YSZ Anode Support Micro-Tubular Solid Oxide Fuel Cell, *Adv. Mater. Res.* 347–353 (2011) 3228–3231. doi:[10.4028/www.scientific.net/AMR.347-353.3228](https://doi.org/10.4028/www.scientific.net/AMR.347-353.3228).
- [132] W. Guo, J. Liu, The effect of nickel oxide microstructure on the performance of Ni–YSZ anode-supported SOFCs, *Solid State Ionics*. 179 (2008) 1516–1520. doi:[10.1016/j.ssi.2008.01.027](https://doi.org/10.1016/j.ssi.2008.01.027).
- [133] X. Meng, N. Yang, B. Meng, X. Tan, Y. Yin, Z.-F. Ma, J. Sunarso, Microstructure tailoring of the nickel–yttria stabilized zirconia (Ni–YSZ) cermet hollow fibres, *Ceram. Int.* 38 (2012) 6327–6334. doi:[10.1016/j.ceramint.2012.05.002](https://doi.org/10.1016/j.ceramint.2012.05.002).
- [134] T. Suzuki, Z. Hasan, Y. Funahashi, T. Yamaguchi, Y. Fujishiro, M. Awano, Impact of anode microstructure on solid oxide fuel cells., *Science*. 325 (2009) 852–5. doi:[10.1126/science.1176404](https://doi.org/10.1126/science.1176404).
- [135] N. Yang, X. Tan, Z. Ma, A phase inversion/sintering process to fabricate nickel/yttria-stabilized zirconia hollow fibers as the anode support for micro-tubular solid oxide fuel cells, *J. Power Sources*. 183 (2008) 14–19. doi:[10.1016/j.jpowsour.2008.05.006](https://doi.org/10.1016/j.jpowsour.2008.05.006).
- [136] Y. Guan, X. Dong, L. Zhang, G. Liu, Z. Liang, S. Chen, L. Chen, X. Zhang, Y. Xiong, H. Wang, Y. Tian, Effects of nickel oxide impurities on the microstructure and electrical properties of a nickel e yttria-stabilized zirconia anode, *Int. J. Hydrogen Energy*. (2016) 1–11. doi:[10.1016/j.ijhydene.2016.04.105](https://doi.org/10.1016/j.ijhydene.2016.04.105).
- [137] X. Wu, Y. Tian, J. Zhang, W. Zuo, X. Kong, J. Wang, K. Sun, X. Zhou, Enhanced electrochemical performance and carbon anti-coking ability of solid oxide fuel cells with silver modified nickel-yttrium stabilized zirconia anode by electroless plating, *J. Power Sources*. 301 (2016). doi:[10.1016/j.jpowsour.2015.10.006](https://doi.org/10.1016/j.jpowsour.2015.10.006).
- [138] V. Gil, C. Moure, J. Tartaj, Sinterability, microstructures and electrical properties of Ni/Gd-doped ceria cermets used as anode materials for SOFCs, *J. Eur. Ceram. Soc.* 27 (2007) 4205–4209. doi:[10.1016/j.jeurceramsoc.2007.02.119](https://doi.org/10.1016/j.jeurceramsoc.2007.02.119).
- [139] U.P. Muecke, K. Akiba, A. Infortuna, T. Salkus, N. V. Stus, L.J. Gauckler, Electrochemical performance of nanocrystalline nickel/gadolinia-doped ceria thin film anodes for solid oxide fuel cells, *Solid State Ionics*. 178 (2008) 1762–1768. doi:[10.1016/j.ssi.2007.10.002](https://doi.org/10.1016/j.ssi.2007.10.002).
- [140] J.H. Jang, J.H. Ryu, S.M. Oh, Microstructure of Ni/YSZ cermets according to particle size of precursor powders and their anodic performances in SOFC, *Ionics (Kiel)*. 6 (2000) 86–91. doi:[10.1007/BF02375551](https://doi.org/10.1007/BF02375551).
- [141] S.M. Jamil, M.H.D. Othman, M.A. Rahman, J. Jaafar, A.F. Ismail, K. Li, Recent fabrication techniques for micro-tubular solid oxide fuel cell support: A review, *J. Eur. Ceram. Soc.* 35 (2015) 1–22. doi:[10.1016/j.jeurceramsoc.2014.08.034](https://doi.org/10.1016/j.jeurceramsoc.2014.08.034).
- [142] H.P. Buchkremer, U. Diekmann, L.G.J. De Haart, H. Kabs, U. Stimming, D. Stöver, Advances in the anode supported planar SOFC technology, in: *Proc. 5th Inter. Symp. SOFC. Aachen, Ger., 1997: pp. 160–170*.
- [143] Y. Mizutani, Planar solid oxide fuel cells: from materials to systems, in: S. Kakaç, A. Pramuanjaroenkij, L. Vasiliev (Eds.), *Mini-Micro Fuel Cells*, 2008.
- [144] S. Zhang, L. Bi, L. Zhang, C. Yang, H. Wang, W. Liu, Fabrication of cathode supported solid oxide fuel cell by multi-layer tape casting and co-firing method, *Int. J. Hydrogen Energy*. 34 (2009) 7789–7794. doi:[10.1016/j.ijhydene.2009.07.081](https://doi.org/10.1016/j.ijhydene.2009.07.081).
- [145] M. Liu, D. Dong, F. Zhao, J. Gao, D. Ding, X. Liu, G. Meng, High-performance cathode-supported SOFCs prepared by a single-step co-firing process, *J. Power Sources*. 182 (2008) 585–588. doi:[10.1016/j.jpowsour.2008.04.039](https://doi.org/10.1016/j.jpowsour.2008.04.039).
- [146] K. Li, Ceramic Membranes for Separation and Reaction, John Wiley & Sons Ltd, England, 2007.
- [147] M.H.D. Othman, High performance micro-tubular solid oxide fuel cell, Imperial College, 2011. <http://ethos.bl.uk/OrderDetails.do?uin=uk.bl.ethos.555892> (accessed June 6, 2013).
- [148] B.F.K. Kingsbury, K. Li, A morphological study of ceramic hollow fibre membranes, *J. Memb. Sci.* 328 (2009) 134–140. doi:[10.1016/j.memsci.2008.11.050](https://doi.org/10.1016/j.memsci.2008.11.050).
- [149] X. Wang, F.H. Wang, Studies of Half-Cell for Anode Supported SOFC after Reduction, *Adv. Mater. Res.* 287–290 (2011) 2511–2515. doi:[10.4028/www.scientific.net/AMR.287-290.2511](https://doi.org/10.4028/www.scientific.net/AMR.287-290.2511).

- [150] M.A. Rahman, F.R. García-García, M.D.I. Hatim, B.F.K. Kingsbury, K. Li, Development of a catalytic hollow fibre membrane micro-reactor for high purity H₂ production, *J. Memb. Sci.* 368 (2011) 116–123. doi:10.1016/j.memsci.2010.11.025.
- [151] M.B.A. Rahman, Catalytic hollow fibre membrane micro-reactors for energy applications, Imperial College London, 2011.