

BUSINESS INTELLIGENCE FRAMEWORK USING ANT COLONY  
OPTIMIZATION FOR FEATURE SELECTION IN HIGHER EDUCATION  
INSTITUTION

SHAMINI RAJA KUMARAN

A thesis submitted in fulfilment of the  
requirements for the award of the degree of  
Master of Philosophy

Faculty of Computing  
Universiti Teknologi Malaysia

MARCH 2017

## ACKNOWLEDGEMENT

Foremost, I would like to express my sincere gratitude to my supervisor, Assoc Prof Dr Mohd Shahizan bin Othman for spending his time instructing me how to write a paper, how to search for literature review and how to collect data. I am also grateful to Mrs Lizawati Mi Yusuf for spending time to read this thesis and providing useful suggestions about this thesis.

Special thanks are given to School of Graduate Studies (SPS) and staff of Department of Information Technology (IT) and Research and Scholarship Department, SPS. In addition, I have to acknowledge Puan Anisah Jamilah and experts for their assistance in many aspects. I am also grateful to Ministry of Higher Education for providing me scholarship and Research University Grant (RUG), Universiti Teknologi Malaysia (UTM) under the Vote No. 02G87 for providing the funds for this project.

Last but not least the importance, I owe more than gratitude to my family members which include my parents and I would like to dedicate this especially to them. Nevertheless, thanks to my beloved ones as well for giving me support and encouragement throughout the research period. Without their boost and support, this accomplishment would have been impossible for me. Thank you for everyone.

## ABSTRACT

Recently, business intelligence (BI) has become an important tool for effective decision-making. BI is a mathematical framework to gain information and knowledge through the process of extracting, transforming, managing, and analyzing data. The demand for accurate knowledge in higher education sector needs a correct technique to extract the exact information for decision-making. However, current BI frameworks and systems lack the ability to transform data into information, and these caused users not to able to fully utilize the BI outcome. This research developed a BI framework for the higher education that is able to explore, analyse and visualize the relevant data into information for use by the top management. This framework identifies the best set of attributes and evaluates the performance of the model with the help of 27 input features. In this case study, the framework used Ant Colony Optimization (ACO) technique mainly to identify the best set of attributes, and the performance was validated using Support Vector Machine (SVM). The framework consists of four layers which are data source, data integration, analytic, and access. Each layer contributes to decision making in terms of processing data, selection of significant features and data visualization. In this study, 46,658 input data were processed for identification of Graduate on Time (GOT) decision in the context of higher education referred as Masters and Doctor of Philosophy (PhD) postgraduates who completed their study within a specified period. The performance evaluation of the data achieved accuracies of 86.44% for PhD and 96.2% for Master's. Based on the findings, the results showed that the BI dashboard as an output from the framework is capable of providing a good decision-making tool for education management.

## ABSTRAK

Dewasa ini, kecerdasan perniagaan (BI) telah menjadi alat yang penting untuk membuat keputusan yang berkesan. BI ialah rangka kerja matematik untuk mendapatkan maklumat dan pengetahuan melalui proses pengekstrakan, transformasi, pengurusan, dan penganalisan data. Permintaan terhadap pengetahuan yang sebenar dalam sektor pendidikan tinggi memerlukan teknik yang betul bagi mengekstrak maklumat yang tepat untuk membuat keputusan. Walau bagaimanapun, rangka kerja dan sistem BI semasa kurang kemampuan untuk mentransformasikan data kepada maklumat, dan ini menyebabkan pengguna tidak dapat menggunakan sepenuhnya dapatan BI. Kajian ini telah membangunkan rangka kerja BI untuk sektor pendidikan tinggi yang mampu menjelajah, menganalisis, dan menggambarkan data yang relevan kepada maklumat untuk kegunaan pengurusan atasan. Rangka kerja ini telah mengenal pasti set atribut terbaik dan menilai prestasi model dengan bantuan 27 atribut. Dalam kajian kes ini, rangka kerja BI ini menggunakan teknik Pengoptimuman Koloni Semut (ACO) bertujuan untuk mengenal pasti set atribut terbaik, dan prestasinya disahkan menggunakan Mesin Vektor Sokongan (SVM). Rangka kerja ini terdiri daripada empat lapisan iaitu sumber data, integrasi data, analisis dan akses. Setiap lapisan menyumbang kepada proses membuat keputusan dari segi pemprosesan data, pemilihan ciri-ciri penting dan visualisasi data. Dalam kajian ini, 46,658 data input telah diproses untuk mengenal pasti keputusan graduan dalam tempoh yang ditetapkan (GOT). Dalam konteks pendidikan tinggi, GOT merujuk kepada pelajar Sarjana dan Doktor Falsafah (PhD) yang berjaya menamatkan pengajiannya dalam tempoh yang ditetapkan. Penilaian prestasi bagi data menunjukkan ketepatan yang dicapai ialah 86.44% untuk PhD dan 96.2% bagi Sarjana. Berdasarkan dapatan ini, keputusan menunjukkan bahawa papan pemuka BI merupakan output daripada rangka kerja yang mampu menyediakan alat membuat keputusan yang baik untuk pengurusan pendidikan.

## TABLE OF CONTENTS

CHAPTER	TITLE	PAGE
	DECLARATION	ii
	DEDICATION	iii
	ACKNOWLEDGEMENT	iv
	ABSTRACT	v
	ABSTRAK	vi
	TABLE OF CONTENTS	vii
	LIST OF TABLES	xi
	LIST OF FIGURES	xiii
	LIST OF ABBREVIATIONS	xvi
	LIST OF SYMBOLS	xvii
<b>1</b>	<b>INTRODUCTION</b>	<b>1</b>
	1.1 Introduction	1
	1.2 Problem Background	2
	1.3 Problem Statement	6
	1.4 Research Objectives	7
	1.5 Scope and Limitations	8
	1.6 Significance of the Study	8
	1.7 Thesis Structure	9
	1.8 Summary	11
<b>2</b>	<b>LITERATURE REVIEW</b>	<b>12</b>
	2.1 Introduction	12
	2.2 Higher Education Sector	12
	2.3 Business Intelligence	13

2.3.1	Business Intelligence Concept	14
2.3.2	Business Intelligence Process	16
2.3.3	Benefits and Hindrances in Business Intelligence	18
2.4	Need of Business Intelligence in Higher Education	20
2.5	Business Intelligence in Higher Education	21
2.5.1	Business Intelligence Frameworks based on Higher Education	22
2.5.2	Comparison of Business Intelligence Frameworks in Higher Education	25
2.5.3	Layers in Business Intelligence Framework	29
2.5.4	Comparison between Research Studies	30
2.5.5	Constraints in Business Intelligence Framework Flow	31
2.6	Feature Selection for Decision Making	33
2.7	Feature Selection for Classification	34
2.7.1	Optimization Techniques for Feature Selection	34
2.7.2	Metaheuristic Algorithm based Feature Selection in Business Intelligence	36
2.7.3	Ant Colony Optimization	39
2.8	Commercial Business Intelligence Products	42
2.9	Summary	42
<b>3</b>	<b>RESEARCH METHODOLOGY</b>	<b>43</b>
3.1	Introduction	43
3.2	Research Framework	43
3.3	Research Concept	44
3.4	Planning and Preparation	46
3.5	Development of Business Intelligence Framework	48
3.5.1	Data Source Layer	49
3.5.2	Data Integration Layer	51
3.5.3	Analytic Layer	58
3.5.4	Access Layer	65
3.6	Validation	69
3.7	Verification	74

3.8	Hardware and Software Requirements	76
3.9	Summary	76
<b>4</b>	<b>ANALYSIS AND RESULT OF ANT COLONY OPTIMIZATION</b>	<b>77</b>
4.1	Introduction	77
4.2	Requirement Gathering	77
4.3	Analysis and Results from the Layers of Business Intelligence Framework	78
4.3.1	Data Source and Data Integration Layer	79
4.3.2	Analytic Layer	82
4.3.2.1	Ant Colony Optimization based Feature Selection on PhD Dataset	84
4.3.2.2	Ant Colony Optimization based Feature Selection on Masters Dataset	85
4.3.3	Analysis of Significant Features in Analytic Layer	87
4.3.3.1	Analysis of Significant Features for PhD Data	87
4.3.3.2	Analysis of Significant Features for Masters Data	88
4.3.3.3	Summary Analysis of Graduate on Time Classification	89
4.3.4	Comparative Analysis between Ant Colony Optimization based Feature Selection Without Ant Colony Optimization based Feature Selection	90
4.3.5	Access Layer	92
4.4	Validation and Verification	97
4.5	Summary	98
<b>5</b>	<b>CONCLUSION</b>	<b>99</b>
5.1	Research Summary	99
5.2	Research Contributions	100
5.3	Research Limitations	101
5.4	Future Work Recommendations	102

5.5 Summary	102
<b>REFERENCES</b>	103
Appendices A – E	111- 146



## LIST OF TABLES

<b>TABLE NO.</b>	<b>TITLE</b>	<b>PAGE</b>
2.1	BI framework components in higher education based on researchers	23
2.2	Existing BI frameworks in education sector	24
2.3	Comparison between researches	31
2.4	Application of meta-heuristic algorithm in BI	37
2.5	Comparison on different meta-heuristic techniques for feature selection	38
2.6	Commercial BI products	42
3.1	Requirement gathering process	46
3.2	University measurement of graduate on time	47
3.3	Descriptions of tables for ETL process	52
3.4	Features descriptions of Ph.D. and Masters datasets	56
3.5	Description of features	57
3.6	Parameter settings of ACO	63
3.7	Accuracy breakdown of SVM and other classifiers in education sector	71
3.8	Section B of survey form questionnaires	75
4.1	Analysis from interview	78
4.2	Database cleaning	79

4.3	Retrieved PhD and Masters data	79
4.4	Total data stored in data warehouse by mode	80
4.5	Graduate data extracted from data marts	82
4.6	Accuracy comparison among SVM functions	83
4.7	SVM classification accuracy with all features for PhD dataset	83
4.8	SVM classification accuracy with all features for Masters dataset	83
4.9	ACO based feature selection searching process on PhD dataset	85
4.10	ACO based feature selection searching process on Masters dataset	86
4.11	Significant features and accuracy based on PhD dataset	88
4.12	ACO based feature selection and SVM accuracy result	88
4.13	Summary analysis of GOT classification	89
4.14	Percentage of reduction for PhD and Masters datasets	90
4.15	Performance measurement results	91
4.16	Interview session information	97
4.17	Experts profile and feedback	98

## LIST OF FIGURES

<b>FIGURE NO.</b>	<b>TITLE</b>	<b>PAGE</b>
1.1	Problematic area in decision making in higher education department	4
1.2	Bottleneck in the transition of knowledge to decisions	5
2.1	Priority of data and analysis in higher education institution	13
2.2	Evolution of data	14
2.3	Concept of business intelligence	15
2.4	Business intelligence process model	17
2.5	Transition process	17
2.6	Typical flow of business intelligence architectire	18
2.7	Dependencies between process, people, and technology	20
2.8	BI solution-South African Education	25
2.9	BI design model	26
2.10	BI in educational landscape	27
2.11	BI conceptual framework	28
2.12	Five layered business intelligence architecture	29
2.13	Constraints in business intelligence flow	32
2.14	Optimization techniques embedding inflow of business intelligence	33

2.15	Taxonomy of oprimization problems	35
2.16	Ant colony optimization movement	39
2.17	Ant colony optimization algorithm	40
3.1	Overview of research framework	44
3.2	Research study based on problem scenario	45
3.3	Business intelligence framework	48
3.4	Data source identification	49
3.5	Process in data source layer	50
3.6	Database query script for extracting data	50
3.7	Extract, transform and load process and staging area	51
3.8	Query on <code>res_stagingarea</code>	52
3.9	Query on <code>res_dw</code>	53
3.10	Query on <code>INSERT</code>	53
3.11	Data warehouse schema	54
3.12	Process of creating data mart	55
3.13	Query script for data mart display	55
3.14	Ant colony optimization based feature selection process	60
3.15	Ant colony optimization algorithm pseudo code	60
3.16	Ant colony optimization algorithm steps	61
3.17	ACO based feature selection psedu code adapted on case study	62
3.18	Ant colony optimization class	64
3.19	Method in ant colony optimization	65
3.20	Sample manual decision making	66
3.21	Process flow in access layer	67

3.22	Developing Version 1 and 2 of dashboard	68
3.23	Flow chart of overall business intelligence dashboard	69
3.24	Example of classification via SVM classifier where $C=1$	70
3.25	Split datasets into 5-fold cross validation	72
3.26	Overview of classification process using SVM	73
4.1	Total retrieved data	80
4.2	Stored data in data warehouse	81
4.3	Extracted total data in 2014 by mode	82
4.4	Performance measurements of PhD data	91
4.5	Performance measurements of Masters data	92
4.6	PhD analysis with citizenship features	93
4.7	PhD analysis with scholarship and number of semester features	94
4.8	PhD analysis with CGPA and number of publication features	94
4.9	PhD analysis with study mode features	95
4.10	Masters analysis with citizenship features	95
4.11	Master analysis with discipline and number of semesters features	96
4.12	Master analysis with study mode, publication, gender and number of activities features	97

## LIST OF ABBREVIATIONS

BI	-	Business intelligence
SPS	-	School of Graduate Studies
UTM	-	Universiti Teknologi Malaysia
ACO	-	Ant colony optimization
SVM	-	Support Vector Machine
IT	-	Information technology
PSO	-	Particle swarm optimization
GA	-	Genetic algorithm
RBF	-	Radial basis function
DT	-	Decision trees
NV	-	Naïve bayes
NB	-	Network bayesian
NN	-	Neural network
CGPA	-	Cumulative grade point average

**LIST OF SYMBOLS**

$C$	-	Cost
$\gamma$	-	Gamma
$p$	-	Evaporation rate
$N$	-	Number of ants
$TN$	-	True negative
$TP$	-	True positive
$FP$	-	False positive
$FN$	-	False negative

**LIST OF APPENDIX**

<b>APPENDIX</b>	<b>TITLE</b>	<b>PAGE</b>
A	Requirement gathering process	111
B	Questionnaire survey of business intelligence dashboard	118
C	SVM classification of PhD and Masters datasets	122
D	Fitness values of PhD and Masters datasets	130
E	Experts questionnaire survey	137



## CHAPTER 1

### INTRODUCTION

#### 1.1 Introduction

Business intelligence (BI) is a process of extracting, transforming, managing, and analyzing data by making a mathematical framework gain information and knowledge (Fitriana and Djatna, 2011). BI allows the incorporation of various ideas, methods, and components to accommodate users in any sector with actionable information. In order to be competitive among higher education sectors, the emphasis of BI lies in making ad hoc decisions to guarantee the quality of education that is being provided.

Corresponding with today's quality of education, academic institutions are being forced to gather, evaluate and harness their data to make effective decisions (Baepler and Murdoch, 2010). Most education sectors are facing challenges in processing and analyzing the data as the data are scattered at various departments (Xu *et al.*, 2007). As a result, this research proposes a BI framework using with Ant Colony Optimization (ACO) based feature selection and Support Vector Machine (SVM).

The current BI frameworks and systems lack in terms of transforming data into information, and this causes users not able to fully utilize the BI outcome (Zulkefli *et al.*, 2015). It is an undeniable factor that the demand for accurate knowledge requires a good technique to extract the exact information for accurate decision-making. Hence, using ACO in BI is very recent among the research and it is believed that this algorithm is diversified to solve a wider perspective of problems

and can be reduced to search for good paths (Krishnaraj and Vinothkumar, 2014). Feature selection is applied to the BI framework, in order to identify the best set of attributes and evaluates the performance of the model with the help of input features. Support Vector Machine (SVM) has been chosen as the classifier to validate the algorithm in BI framework. These methods are integrated into the BI framework, in order, to explore, analysis and visualize the relevant data into information. The upcoming section gives the description of the existing problems that cause the emerging of this research.

## 1.2 Problem Background

The market growth toward the application of business intelligence (BI) has seen a positive impact in organizations and provide deeper insights of data (Gartner, 2016). The forecast of BI spending which is recently released showed an increase to 5.2% from 2015 to 2016 hitting \$16.9 billion (Gartner, 2016). According to IDG Enterprise (2016), a recent survey of Chief Information Officer (CIO), 231 respondents who indicated they are the Information Technology (IT) executives revealed that 50% increase in usage of BI and analytics compared to last 12 months. Therefore, it can be seen that BI adoption is common in developed countries, in contrast, the reports of deployment of BI in developing countries such as in Malaysia has been scarce (Ong *et al.*, 2011).

In Malaysia, there is a lack of evidence of deployment of BI, especially in higher education sector. In order to globalize the higher education market in Malaysia, Malaysia higher education system must attentive in opening new markets and utilize intelligence systems (Grapragasem *et al.*, 2014). Malaysian higher education system should reap full benefits from the BI to be competitive and lead to effective decision-making. This is to ensure Malaysian higher education institutions present high accuracy of decision-making.

Accordance to Malaysia Education Blueprint, Higher Education 2015-2025 (2015), universities in Malaysia is experiencing a dramatic change over which is triggered by the disruptive emerging trend of technologies. The bodies in universities

such as faculties, schools, libraries and student bodies are under maximised pressure to increase the level of effectiveness and productivity on decision-making. This research proposes the improvement of decision-making in the case study of Graduate On Time (GOT). This case study entails on Graduate On Time (GOT) under the context of higher education refers to students who completed their study within specified duration as stated by one of the interviewees under this research.

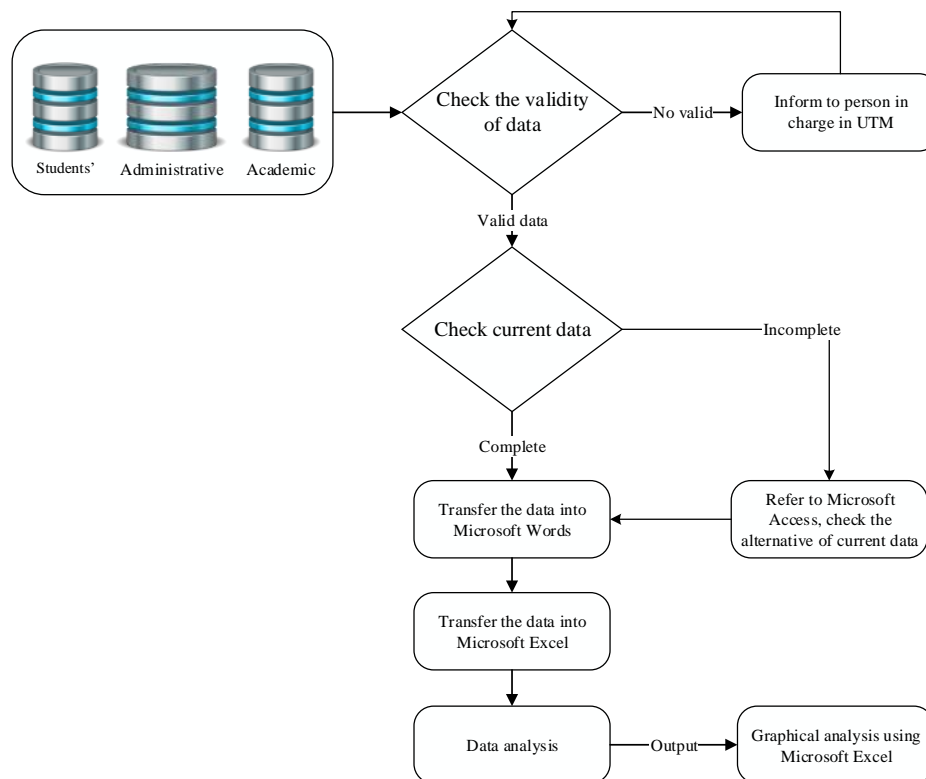
This case study under this research will unlock the improvement of decision-making around the abilities of postgraduates who completed their study within the duration allocated. This directly impacts the decision-making, by making the information are more easily accessible to all levels of managements. The ability to understand the features that contribute a postgraduate to attain the GOT status and availability of the data based on the significant features allow the university to direct the right information to right people at a correct time.

Generally, higher education institutions operate in a rapidly changing business environment requires a decision-making framework as a kick-start for the institution. Focusing on academic institutions, a number of higher education institutions are failing to be effective in terms of students' success rate, graduate on time rates, enrolment targets, and staff retentions (Piedade and Santos, 2010). Nevertheless, universities are obliged to play the main role to monitor and understand the performances and elicit the factors that react in postgraduate enrolment and tuition, finance, scholarship, staffing, and asset management (Beckett and McComb, 2012; Mutanga, 2015). Therefore, higher education institutions have defects that initially affect the quality of decision-making and its academic analytical processes. As stated by Prem and Karnan (2014), there are no consistent enterprise-wide BI methodologies as such it proves that there is analyst using Microsoft Excel and Spreadsheets functions. This inconsistency allows the inability of users to gain decisions from data.

Based on the interviews conducted in this research, the task force team has highlighted that “The analysis of a large amount of data consumes a lot of time, subsequently delaying the decision-making process of the department. The delay in the decision-making leads to the delay of decision-making and forces the use of

intuition and experience of staff.” It is common for higher education staffs to deal with huge amounts of students’ data with numerous features detail. The problem here is, how to handle huge amounts of students’ data using BI with numerous features detail which affect the performance of management in terms of accuracy in decisions. Liu *et al.* (2011) have stated by performing the pre-processing process with all dataset features are less encouraging with a total accuracy of 75.9%, while, using proposed feature selection technique, 80.2% accuracy will be improved.

Nevertheless, the other problems highlighted by the scope and case study of this research is the decision makers use manual data visualization using Microsoft Excel and PDF file. Figure 1.1 illustrates the problem are that emerge this research that causes the time of consumption in the decision-making process.

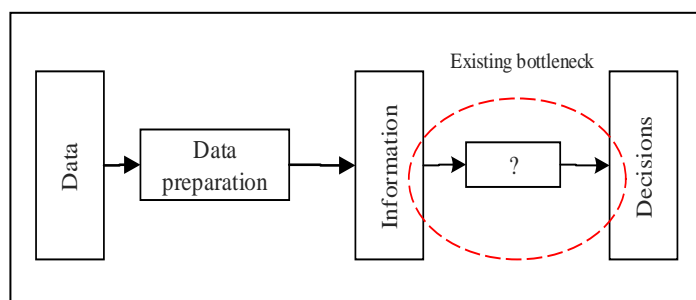


**Figure 1.1** Problematic area in decision-making in higher education department

The problematic area leads to the data lack analytical and failed to facilitate all level of administration in the departments as stated by the BI task force during the interview on 7<sup>th</sup> January 2016. The real scenario of manual data visualization is the staff in-charge will extract the data from the databases and will pass it to the research officer in Excel format. This research officer will use extracted data and conduct manual visualization using Microsoft Excel without the knowledge of specific user requirement and give PDF file with to the top management who requires it for decision-making.

Hence, this research addresses these shortcomings by incorporating meta-heuristic algorithm and data mining for decision-making purposes so that BI system for higher education can be robust towards the shifting needs of the academic sector. Thus, this research proposed to develop a BI framework in order to assist the decision makers to full use of their information, in the sense, the transformation of data into decisions.

Current BI frameworks in the higher education sector have neglected the modeling of some important underlying processes that may affect the data. This research has discussed on eight frameworks on higher education based BI frameworks in upcoming Chapter 2. Based on the eight frameworks, it is able to summarize that there is an existing gap between data and decisions. Nenortaite and Butleris (2009) has a perspective that existing business intelligence frameworks still have limitations and focused on three main constraints, namely, data collection, data transformation and visualization of knowledge. Figure 1.2 illustrates the summarization of the research gap between information and decisions in this research.



**Figure 1.2** Bottleneck in the transition of knowledge to decisions

Although the importance of closing the gap linking information and decisions has been identified and steps have been proposed, the frameworks that have been produced to model the process flow for decision-making for higher education sector still has its gaps. As a result, management is still unable to possess a complete view of the information via dashboards for decision-making. As stated by Guster *et al.* (2014), toward gaining a good outcome of decision-making, the business intelligence shall invest in the transformation of data to decisions.

Thus, to extract decisions from the datasets before injected into data visualization for decision-making in business intelligence, an optimization technique which is meta-heuristic algorithm has to be incorporated for better decision-making. The important function of a BI framework is to give suitable decisions. The idea of carrying out optimization techniques will assist BI in achieving the single version truth of decisions. Hence, this depicts that proper meta-heuristic algorithm is required to produce accurate decisions to higher education.

In this research, ACO based feature selection is incorporated into the framework in order to provide accurate decision-making. As supported by Anusha and Nallaperumal (2015), ACO as a metaheuristic algorithm creates efficient and accurate decision-making as it assists in transforming raw data into actionable information. Feature selection plays a huge necessity of choosing significant and informative features in order to improve the quality of decision-making (Pudil and Somol, 2008). BI allows descriptive modelling approach whereby by incorporating ACO based feature selection in BI framework, it allows to evaluate the performance of the case study with the help of input attributes (Anusha and Nallaperumal, 2015). Hence, the problem background leads into next section, problem statement.

### **1.3 Problem Statement**

To invest the knowledge into decisions, it fully depends on two main factors which are extracting the knowledge from the data and visualizing the knowledge into the dashboard. So, business intelligence (BI) has the capability to visualize data, however, the limitation is the users who unable to gain decision from the data.

Therefore, implementation of a meta-heuristic algorithm based feature selection in business intelligence framework is a way to select the informative and potential features for decision-making.

Nevertheless, the main problem that has been highlighted in problem background is anticipated to be solved via these research questions. The main research question is, “*How to develop a BI framework to handle decision-making problem for higher education?*”

From the main research, the following questions are addressed:

- i) What are the existing BI frameworks aspects of meta-heuristic algorithm and feature selection that have been implemented in the higher education sector?
- ii) How to develop a business intelligence framework for higher education integrating with a meta-heuristic algorithm for feature selection?

#### **1.4 Research Objectives**

The main aim of the research is, “*To develop a business intelligence (BI) framework using ACO algorithm with feature selection to handle decision-making in higher education sector*”. To accomplish the aim, the research objectives are specified as follows:

- i) To evaluate the existing BI frameworks to support decision-making in higher education.
- ii) To develop a business intelligence framework for higher education using Ant Colony Optimization (ACO) based feature selection.

## 1.5 Scope

The scopes of research are as follows:

- i) The output of business intelligence in support management decision-making at School of Graduate Studies (SPS), Universiti Teknologi Malaysia (UTM).
- ii) BI framework implemented on Postgraduate by Research Mode comprising PhD and Masters students from the enrolment year 2010 till the year 2013, with the total data of 46,658.
- iii) Using ACO based feature selection to select significant features from the Graduate On Time (GOT) case study through the layers in BI framework.
- iv) Apply SVM classifier to validate the data respective to the GOT case study BI framework.

## 1.6 Significance of the Study

This research indeed will be significant as it endeavors to build a BI framework with the meta-heuristic algorithm, as for this research, the implementation of ACO algorithm to be used by top management, staff and end users to assist them in decision-making. Accordance to this research, the outcome of this research will be significant and benefits higher education institutions. The first contribution of this thesis is the BI framework using the ACO algorithm based feature selection. This is to identify the best set of attributes and evaluates the performance of the model with the help of input attributes. The other significant are as follow:

- i) Theoretical
  - a) Provides a clear understanding of business intelligence, data mining methods, meta-heuristic algorithms based on feature selection focuses on higher education within the context of research-based postgraduates.
  - b) Provides a clear description flow of BI framework and the existence of bottleneck in transforming information to decisions.
  - c) Provides a new BI framework using ACO based feature selection algorithm.



- ii) Higher education top management, staff and BI end-user  
Provide a clear BI framework using ACO algorithm based feature selection. This allows portraying sensible decision through selected features via the GOT case study. Users are able to monitor and elicit the factors that react among postgraduate students without the usage of intuition-feel.
  
- iii) Researchers  
There has been little research on business intelligence for higher education. Hence, this study contributes new knowledge for business intelligence by using ACO algorithm based feature selection and validate using SVM classifier in the BI framework for attribute selection before visualizing the decisions in the dashboard. This research can be beneficial for those researchers whom would like to expand the expertise in business intelligence field for any sector not specifically higher education.

## **1.7 Thesis Structure**

This thesis is organized into six chapters where Chapter 1 for introduction, Chapter 2 is the section of literature review, Chapter 3 discusses the research design and methodology of this research and Chapter 4 is the detail explanation in developing the business intelligence (BI) framework integrating with ACO algorithm based feature selection for the purpose of attribute selection. While Chapter 5 is to measure and validate the implementation of ACO algorithm in integrating into BI framework based on the criteria of attribute selection. Chapter 6 is the conclusion, recommendation and future works under this research. The content of the chapters is briefly illustrated as the following:

- i) Chapter 1  
This chapter introduces the problem background of this research, research objectives, research questions, scope and limitations, the significance of the study and the structure of the thesis.

ii) Chapter 2

Chapter 2 discusses the fundamental and theories of this research study which are derived from the previous work. The terms such as business intelligence, meta-heuristic algorithm, ACO algorithm, feature selection, existing BI frameworks under the context of higher education and the case study of previous work are discussed in this chapter.

iii) Chapter 3

Chapter 3 is the chapter that is focused on the flow of research and it discusses the research design and methodology. Chapter 3 also devoted in giving the detailed mapping between the research problems, phases of the research, chapters involved, research activities and the objectives. This chapter also contributes toward the explanation on the development of the BI framework using ACO based feature selection for GOT case study. The strategic and systematic step of developing the BI framework for higher education is one of the contributions of this research.

iv) Chapter 4

Chapter 4 under this research focuses on the case study of this research, implementing the feature selection using ACO to prove that ACO algorithm through performance analysis. The final outcome from the developed framework is discussed and also described the details of validation steps and method for attribute selection in BI framework using ACO algorithm. This chapter shows the analysis factors of layers proposed in the framework and incorporation of ACO algorithm based feature selection. This is to address the accuracy level and its contribution toward BI framework in producing a better decision-making in higher education. This chapter also discusses the verification process by the expertise in business intelligence for approving the importance selected features through the visualization in BI framework.

v) Chapter 5

This chapter covers the conclusion, recommendations and future works of the conducted research. This chapter devoted giving a very clear understanding

about the goal of this research which has been successfully achieved in thesis and also the limitations. The future works is presented as well to give a wide opportunity in the field of business intelligence (BI).

## **1.8 Summary**

This chapter has introduced the BI in general and its usage and importance in supporting the decision-making in sectors especially higher education sector. The following sections on the problem background, a case study has been explained the scenario and problems faced by management in the higher education sector that are related in achieving good decision-making. This led into research objectives and significance of the research study has also been provided to strengthen the research. This study attempted to propose a BI framework incorporated with Ant Colony Optimization (ACO) algorithm based feature selection to identify the best set of features and evaluates the performance using the dashboard with the help of input attributes for accurate decision-making.

## REFERENCES

- Ali, S.I., and Shahzad, W. (2012). A Feature Subset Selection Method based on Conditional Mutual Information and Ant Colony Optimization. *International Journal of Computer Applications*, 60 (11), 5–10.
- Anusha, R. and Nallaperumal, K. (2015). Novel Metaheuristic Algorithm for Decision Making. *International Journal of Trend in Research and Development*, 2(2), 1-4.
- Azar, D. and Vybihal, J. (2011). An Ant Colony Optimization Algorithm To Improve Software Quality Prediction Models: Case of Class Stability. *Information and Software Technology*, 53(4), 388–393.
- Baepler, P. and Murdoch, C. J. (2010). Academic analytics and data mining in higher education. *International Journal for the Scholarship of Teaching and Learning*, 4(2), 1-11.
- Beckett.T. and McComb, B.E. (2012). Increase Enrollment, Retention and Student Success: Best Practices for Information Delivery and Strategic Alignment. *New York: Information Builders*, 1-34.
- Bichsel, J. (2012). Analytics in higher education: Benefits, barriers, progress, and recommendations. *EDUCAUSE Center for Applied Research*, 1-33.
- Blum, C. (2005). Ant colony optimization: Introduction and recent trends. *Physics of Life Reviews*, 2(4), 353–373.
- Catak, F. (2015). Genetic Algorithm based Feature Selection in High Dimensional Text Dataset Classification. *WSEAS Transactions on Information Science and Applications*, 12, 290-296.
- Chang, C. C. and Lin, C. J. (2011). LIBSVM: A Library for Support Vector Machines. *ACM Transactions on Intelligent Systems and Technology (TIST)*,2(3), 1-27.
- Chaudhuri, S., Dayal, U. and Narasayya, V. (2011). An overview of business intelligence technology. *Communications of the ACM*, 54(8), 88-98.

- Cortes, C. and Vapnik, V. (1995). Support-vector networks. *Machine learning*, 20(3), 273-297.
- Cortez, P. and Silva, A. M. G. (2008). Using data mining to predict secondary school student performance, 1-8.
- Dallaki, H., Lari, K. B., Hamzeh, A., Hashemi, S. and Sami, A. (2015). Scaling up the hybrid Particle Swarm Optimization algorithm for nominal data-sets. *Intelligent Data Analysis*, 19(4), 825-844.
- Desale, S., Rasool, A. Andhale, S. and Rane, P. (2015). Heuristic and Meta-Heuristic Algorithms and Their Relevance to the Real World: A Survey. *International Journal of Computer Engineering in Research Trends*, 2(5), 296–304.
- Dobratz, M.C. (2004). The Life Closure Scale: Additional psychometric testing of a tool to measure psychological adaptation in death and dying. *Research in Nursing & Health*, 27, 52–62.
- Duan, Y., Cao, G., One, V. and Woolley, M. (2013). Intelligent Student Engagement Management-Appling Business Intelligence in Higher Education. *Proceeding of International Conference on Information and Social Science (ISS 2013)*, 12–20.
- Fitriana, R., Eriyatno, T. D. and Djatna, T. (2011). Progress in Business Intelligence System research: A literature Review. *International Journal of Basic and Applied Sciences IJBAS-IJENS*, 11(03), 1-11.
- Gandhi, K. R., Uma, S. M., & Karnan, M. (2012). A Hybrid Meta Heuristic Algorithm for Discovering Classification Rule in Data Mining. *IJCSNS*, 12(4), 116-122.
- Gartner, (2016). Gartner Says Worldwide Business Intelligence and Analytics Market to Reach \$16.9 Billion in 2016 [Online] Available at: [www.gartner.com/newsroom/id/3198917](http://www.gartner.com/newsroom/id/3198917) [Accessed: 20 March 2016]
- Gaspar, P., Carbonell, J. and Oliveira, J. L. (2012). On the parameter optimization of Support Vector Machines for binary classification. *Journal of Integrative Bioinformatics*, 9(3), 1-11.
- Grapragasem, S., Krishnan, A. and Mansor, A. N. (2014). Current trends in Malaysian Higher Education and the Effect on Education Policy and Practice: An Overview. *International Journal of Higher Education*, 3(1), 85-93.

- Guster, D., Robinson, D., Brown, C. G. and Rice, E. P. (2014). Advanced Application Of Business Intelligence In Higher Education : Predictive Edictive Modeling. *Journal of Information Technology Management*, XXV(1), 54–78.
- Hočevár, B. and Jaklič, J. (2010). Assessing benefits of business intelligence systems—a case study. *Management: Journal of Contemporary Management Issues*, 13(2), 87-119.
- IDG Enterprise (2016). CIO Tech Poll: Tech Priorities 2016 [Online]. Available at: [www.idgenterprise.com/resource/research/cio-tech-poll-tech-priorities-2016](http://www.idgenterprise.com/resource/research/cio-tech-poll-tech-priorities-2016) [Accessed: January 2016]
- Joint Information Systems Committee (2011). Available at: <https://www.jisc.ac.uk/guides/understanding-key-issues-for-mergers-in-further-and-higher-education> [Accessed: December 2015]
- Jusoh, J. A., Endot, N., Hamid, N. A., Bongsu, R. H. R. and Muda, R. (2012). Conceptual framework of business intelligence analysis in academic environment using Birt. In *The International Conference on Informatics and Applications (ICIA2012) The Society of Digital Information and Wireless Communication*, 390-396.
- Kabir, M. and Murase, K. (2012). Expert Systems with Applications a New Hybrid Ant Colony Optimization Algorithm for Feature Selection. *Expert Systems With Applications*, 39(3), 3747–3763.
- Kanan, H. R., Faez, K. and Taheri, S. M. (2007). Feature Selection Using Ant Colony Optimization (ACO): A New Method and Comparative Study in the Application of Face Recognition System. *Advances in Data Mining. Theoretical Aspects and Applications Lecture Notes in Computer Science*, 63-76.
- Kleesuwán, S., Mitatha, S., Yupapin, P. P. and Piyatamrong, B. (2010). Business Intelligence in Thailand's Higher Educational Resources Management. *Procedia - Social and Behavioral Sciences*, 2(1), 84–87.
- Krishnaraj, N. and Vinothkumar, M. R. (2014). Business Intelligence: Decision making through Soft Computing Algorithms. *International Journal of Trend in Research and Development*, 2(2), 1-4.
- Li, C. H., Lin, C. T., Kuo, B. C. and Chu, H. S. (2010). An automatic method for selecting the parameter of the RBF kernel function to support vector machines. In *Geoscience and Remote Sensing Symposium (IGARSS) International*, 836-839.

- Liang, Z., Sun, J., Lin, Q., Du, Z., Chen, J. and Ming, Z. (2015). A novel multiple rule sets data classification algorithm based on ant colony algorithm. *Applied Soft Computing*, 38, 1000–1011.
- Liu, Y., Wang, G., Chen, H., Dong, H., Zhue, X. and Wang, S. (2011). An improved particle swarm optimization for feature selection. *Journal of Bionic Engineering*, 8 (2), 191-200.
- Lönnqvist, A. and Pirttimäki, V. (2006). The Measurement of Business Intelligence. *Information systems management*, 23(1), 32-40.
- Loyola, P., Román, P. E. and Velásquez, J. D. (2012). Predicting Web User Behavior Using Learning-Based Ant Colony Optimization. *Engineering Applications of Artificial Intelligence*, 25(5), 889-897.
- Madewell, C.D. (2014). Advantages and Disadvantages of Implementing Business Intelligence. Available at: <https://www.linkedin.com/pulse/advantages-disadvantages-implementing-business-charles-d-madewell>. [Accessed: December 2016]
- Mafarja, M. and Eleyan, D. (2013). Ant Colony Optimization Based Feature Selection in Rough Set Theory. *International Journal of Computer Science and Electronics Engineering (IJCSEE) Volume*, 1(2), 244-247
- Malaysia Education Blueprint 2015-2025, Higher Education: Executive Summary (2015), 1-40.
- Maria, R. (2007). Strategic Intelligence With BI Competency Center. *Data Management*, 2(1), 66–78.
- McKerlich, R. C., Ives, C. and McGreal, R. (2013). Measuring use and creation of open educational resources in higher education. *The International Review of Research in Open and Distributed Learning*, 14(4), 1-14.
- Mutanga, A. (2015). A Context-Based Business Intelligence Solution for South African Higher Education. *Journal of Industrial and Intelligent Information*, 3(2), 119-125.
- Nenortaite and Butleris, R. (2009). Improving Business Rules Management Through the Application of Adaptive Business Intelligence Technique. *Jurnal Technology*, 38(1), 21–28.
- Ng, A. (2012). Machine Learning. Available at: <http://openclassroom.stanford.edu/MainFolder/CoursePage.php?course=Machin eLearning>. [Accessed: December 2015]

- Njuru, J. (2012). The Strategic Value of Business Intelligence Systems : A Case Study of GSM companies in Kenya. *Strathmore University*, 1-67.
- Nyalungu, V. (2011). The Application of a Business Intelligence Tool for Strategic Planning in a Higher Education Institution: A Case Study of the University of The Witwatersrand. *The Journal for Transdisciplinary Research in Southern Africa*, 7(1), 1-20.
- Obeidat, M., North, S., North, M. and Rattanak, V. (2014). Business Intelligence Domain and Beyond. *Universal Journal of Industrial and Business Management*, 2(6), 127-134.
- Olszak, C. M. and Ziemba, E. (2007). Approach to building and implementing business intelligence systems. *Interdisciplinary Journal of Information, Knowledge, and Management*, 2(1), 135-148.
- Ong, I. L., Siew, P. H. and Wong, S. F. (2011). Understanding business intelligence adoption and its values: some examples from Malaysian companies. *Symposium on Information and Computer Sciences (ICS 2011)*, 47-50.
- Paireekreng, W., Jitkongchuen, D., Sukpongthai, W., and Suwannakoot, R. (2016). Improving Soft Computing Performance with Ant Colony Optimization for Multiclass Classification: The Application for Learning Style Classification. *International Conference on Intelligent Systems, Modelling and Simulation*, 7, 101-105.
- Pant, P. (2009). Business Intelligence: How to build successful BI strategy. *Deloitte Development LLC*, 1-19.
- Piedade, M. B. and Santos, M. Y. (2010). Business intelligence in higher education: Enhancing the teaching-learning process with a SRM system. *Information Systems and Technologies (CISTI), 2010 5th Iberian Conference*, 1-5.
- Prasad, Y., Biswas, K. K. and Jain, C. (2010). SVM Classifier Based Feature Selection Using GA, ACO and PSO for SIRNA Design. *Advances in Swarm Intelligence*, 6146, 307–314.
- Prem, M. J. and Karnan, M. (2014). Business Intelligence–Hybrid Metaheuristics Techniques. *International Journal of Business Intelligence Research*, 5(1), 64–70.
- Prem, M. J. and Karnan, M. (2013). Business Intelligence: Optimization techniques for Decision Making, *International Journal of Business Intelligence Research*, 2(8), 1081–1092.



- Pudil, P. and Somol, P. (2008). Identifying the Most Informative Variables for Decision-Making Problems- A Survey of Recent Approaches and Accompanying Problems. *Acta Oeconomica Pragensia*, 2008, 4, 37-55.
- Ramanigopal, C.S., Palaniappan, G., Mani, A. (2012). Business Intelligence for Competence in Consumer Packaged Good Industry. *International Journal of Marketing and Technology*, 2012, 2(5), 84- 105.
- Ranjan, J. (2009). Business Intelligence: Concepts, Components, Techniques and Benefits. *Journal of Theoretical and Applied Information Technology*, 9(1), 60-70.
- Samanta, B. and Nataraj, C. (2009). Application of particle swarm optimization and proximal support vector machines for fault detection. *Swarm Intelligence*, 3(4), 303-325.
- Samuel, A. B. and John A. A. (2014). Business Intelligence for Higher Education in Nigeria: Towards Making Academic Data a Productive Advantage. *Transition from Observation to Knowledge to Intelligence*, 1-13.
- Sandhu, M. K., Kaur, A. and Kaur, R. (2014). Data Warehouse Schemas. *International Journal of Innovative Research in Advanced Engineering*, 2(4), 47-51.
- Sangar, A. B. and Iahad, N. B. A. (2013). Critical Factors that Affect the Success of Business Intelligence Systems (BIS) Implementation in an Organization. *Intelligence*, 12, 14-16.
- Sembaring, S., Zarlis, M., Hartama, D., Ramliana, S. and Wani, E. (2011). Prediction of student academic performance by an application of data mining techniques. *International Conference on Management and Artificial Intelligence IPEDR*, 6, 110-114.
- Shardlow, M. (2016). An analysis of feature selection techniques. *The University of Manchester*, 1-17.
- Sherman, R. (2014). Business Intelligence GuideBook: From Data Integration to Analytics. *Elsevier*, 3-19.
- Shiau, W. L., Hsu, P. Y. and Wang, J. Z. (2009). Development of measures to assess the ERP adoption of small and medium enterprises. *Journal of Enterprise Information Management*, 22(1/2), 99-118.
- Singh, R., Kumar, H. and Singla, R. K. (2014). TOPSIS based Multi-Criteria Decision Making of Feature Selection Techniques for Network Traffic Dataset,

- International Journal of Engineering and Technology*, 5, 4598-4604.
- Singla, K. Jain, and S. K. Sharma, (2012). The beta generalized Weibull distribution: Properties and applications, *Reliability. Eng. Sys. Safety*, 102, 5-15
- Sobecki, J. and Tomczak, J. M. (2010). Student courses recommendation using ant colony optimization. In *Asian Conference on Intelligent Information and Database Systems*, 5991, 124-133.
- Socha, K. and Dorigo, M. (2008). Ant colony optimization for continuous domains. *European journal of operational research*, 185(3), 1155-1173.
- Sonkamble, B. A. and Doye, D. D. (2011). A novel linear-polynomial kernel to construct support vector machines for speech recognition. *Journal of Computer Science*, 7(7), 991-996.
- Stützle, T., López-Ibáñez, M., Pellegrini, P., Maur, M., De Oca, M. M., Birattari, M. and Dorigo, M. (2010). Parameter Adaptation in Ant Colony Optimization. *Springer Berlin Heidelberg*, 191-215.
- Sujitparapitaya, S., Shirani, A. and Roldan, M. (2012). Business Intelligence Adoption in Academic Administration: An Empirical Investigation. *Issues in Information Systems*, 13(2), 112-122.
- Sun, M., Chen, J., Zhang, Y., & Shi, S. (2012). A new method of feature selection for flow classification. *Physics Procedia*, 24(1), 1729-1736.
- Teixeira, M. R. and Misaghi, M. (2013). Business Intelligence in an Educational Landscape. *The Fifth International Conference on Advances in Database, Knowledge, and Data Applications (DBKDA 2013)*, 242–245.
- Thai-Nghe, N., Busche, A. and Schmidt-Thieme, L. (2009, November). Improving academic performance prediction by dealing with class imbalance. In *2009 Ninth International Conference on Intelligent Systems Design and Applications*, 878-883.
- Trif, S. (2011). Using Genetic Algorithms in Secured Business Intelligence Mobile Applications. *Informatica Economica*, 15(1), 69-78.
- Vizgaitytė, G. and Skyrius, R. (2012). Business Intelligence In The Process Of Decision Making Changes And Trends. *Ekonomika*, 91(3), 147–157.
- Wang, J. and Kourik, J. L. (2015). Data Warehouse Snowflake Design and Performance Considerations in Business Analytics. *Journal of Advances in Information Technology Vol*, 6(4), 1-5.

- Wang, X., Yang, J., Teng, X., Xia, W. and Jensen, R. (2007). Feature Selection Based On Rough Sets And Particle Swarm Optimization. *Pattern Recognition Letters*, 28(4), 459-471.
- Wei, X. (2014). Parameters Analysis for Basic Ant Colony Optimization Algorithm in TSP. *International Journal of U-and E-Service, Science and Technology*, 7(4), 159–170.
- Wu, C., Tzeng, G., Goo, Y. and Fang, W. (2007). A real-Valued Genetic Algorithm to Optimize The Parameters of Support Vector Machine for Predicting Bankruptcy. *Expert Systems with Applications*, 32(2), 397-408.
- Xingzhu, W. (2015). ACO and SVM Selection Feature Weighting of Network Intrusion Detection Method. *International Journal of Security and Its Application*, 9(4), 1-12.
- Xu, L., Zeng, L., Shi, Z., He, Q. and Wang, M. (2007, October). Research on Business Intelligence in enterprise computing environment. In *2007 IEEE International Conference on Systems, Man and Cybernetics*, 3270-3275.
- Yin, R. K. (1994). Case study research. Design and methods. *Thousand Oakz: Sage*, 1-181.
- Zhu, W., Zeng, N. and Wang, N. (2010). Specificity, Accuracy, Associated Confidence Interval and ROC Analysis with Practical SAS Implementations. *NESUG 2010 Health Care and Life Sciences*, 1-9.
- Zhuo, L., Zheng, J., Li, X., Wang, F., Ai, B. and Qian, J. (2008). A genetic algorithm based wrapper feature selection method for classification of hyperspectral images using support vector machine. In *Geoinformatics 2008 and Joint Conference on GIS and Built Environment: Classification of Remote Sensing Images*, 71471, 1-9.
- Zulkefli, N. A., Miskon, S., Hashim, H., Alias, R. A., Abdullah, N. S., Ali, N. M. and Maarof, M. A. (2015). A Business Intelligence Framework For Higher Education Institutions. *Journal of Engineering and Applied Sciences ARPN*, 10(23), 18070–18077.