

RADIATION DOSES, CANCER RISKS AND OPTIMIZATION PROCESS OF
ROUTINE COMPUTED TOMOGRAPHY (CT) EXAMINATIONS IN JOHOR

MUHAMMAD KHALIS BIN ABDUL KARIM

A thesis submitted in fulfilment of the
requirements for the award of the degree of
Doctor of Philosophy (Physics)

Faculty of Science
Universiti Teknologi Malaysia

MARCH 2017

DEDICATION

To my beloved parents & wife...

ACKNOWLEDGEMENT

In the name of Allah, the Most Gracious, the most Merciful. All the praises and thanks be to Allah.

First and foremost, I would like to thank my advisor, Assistant Prof. Dr Suhairul bin Hashim. I am extraordinarily fortunate to have Dr. Suhairul as my advisor, mentor and friend. Suhairul has endlessly encouraging, patient and supportive with me throughout my graduate education and I have no doubt that he will continue to serve as a mentor and guide through my future endeavours.

I would also like to thank all of the ‘radiation’ staff in Department of Diagnostic Imaging of public hospital in Johor especially Hospital Sultanah Aminah and Hospital Permai. My special thanks exclusively to Head Radiologist of Johor state, Dr Hjh Khatijah binti Abu Bakar for preparing me with the knowledge to undertake this research. Working with the Computed Tomography team and the QA group was truly enriching experience. The clinical teams truly have a diverse knowledge base and collaborative mind-set that was an invaluable asset to my research works. I would especially like to extend my sincere gratitude to Izwan Che Pi and Diyana Shariff for their unwavering support, encouragement and guidance.

I am grateful to my research group in UTM, co-authors and friends: Nur Ashiqin, Ang Wee Chin, Nasuha, Afiq, Omeje Maxwell, Mhareb, Yahaya, Hayder, Ali Aqeel, Akhmal and many more. And the trainees in the lab who endured endless hours of analysing organ dose on behalf of my research; Afiq Radzwan, Kamarul, Azhar and Hafiz. I would also like to thank Prof Dr David Bradley and Dr Akmal Sabaruddin, as my imaging mentor and lead me to finish my final stage of the research. My deepest thanks to Medical Physics group in Agensi Nuklear Malaysia, Mr Bazli, Mrs Norizza, Miss Asmaliza and Mrs Yati for guiding me throughout the process of calibrating TLDs.

And lastly, I would like to thank my family for their steadfast belief that despite their incomprehension about what I do, which is to change the world. I am indebted to my parents and parents-in law, Abdul Karim, Roshayati and Roaini for their tenacious encouragement. I am grateful to my wife, Nurul Farehah for always supporting me, for being always taking care of our childrens; Faris, Harith, Hasif and Umair and for continuously asking me to complete my research quickly. I am eternally grateful for their love and encouragement throughout my life. And for all my dearie siblings, Khairul Anuar, Nor Suhaila, and Zulkhairi, I know they would have been proud of their big brother. Thank you for the endless support.

ABSTRACT

The concerns towards radiation-induced cancer from Computed Tomography (CT) examinations have led to the encouragement of CT dose monitoring and further optimization of the scanning parameters. Therefore, in this study, radiation dose from CT scan and its related risks to the patients from current CT practice were analysed. In the first stage, this thesis started the discussion on the level of current knowledge among radiology personnel towards CT radiation risk and its optimization. There is no significant difference of the current knowledge of CT optimization between the two professions of interest herein, the medical and the allied health groups. A CT dose survey was conducted in 8 CT facilities for a 6-month period, encompassing data for 1024 patients with various CT examinations that included regions of the abdomen, brain and thorax. CT-EXPO (Version 2.3.1, Germany) software was used to validate the dose information such as CT Dose Index (CTDI) and dose-length product (DLP). The proposed Diagnostic Reference Levels (DRLs) were indicated by rounding off the third quartiles (Q3s) of whole dose distributions for weighted CTDI (CTDI_w) (in mGy), volume CTDI (CTDI_{vol}) (in mGy) and DLP (in mGy.cm) and their values were; 16, 17, and 650 respectively for CT abdomen; 70, 70, and 1030 respectively for CT Brain and 15, 16, and 670 respectively for CT thorax. In the second stage, the cancer risks of the CT examinations were estimated and the calculation was based on International Commission on Radiation Protection (ICRP) Publication 103 Report and Biological Effects of Ionizing Radiation (BEIR) VII Report. Based on BEIR VII recommendation, the study discovered that the lifetime attributable risks (LARs) of 100,000 populations who underwent abdominal CT examinations for stomach cancer were 2.3 for male and 1.0 for female; while for colon cancer the LARs were 2.3 for male and 0.7 for female. The effectiveness of optimization of CT parameters and application of shielding in routine CT procedures were evaluated. Of 7 protocols (P1 – P7), the k factors were constant for all protocols and decreased by ~8% compared to the universal k factor. It is of interest that k factors from CT-EXPO were found to vary between 0.010 for protocol P5 and 0.015 for protocol P3 due to inconsistency in tube potential and pitch factor. The application of breast shielding to routine CT thorax protocols reduced by 14% the breast's equivalent dose. Hence, this study supports the importance of initiating protection and optimization processes of routine CT examinations in order to offer safer imaging practices.

ABSTRAK

Kebimbangan terhadap kanser teraruh sinaran daripada pemeriksaan tomografi berkomputer (CT) mengarahkan kepada penggalakan pemantauan dos CT dan pengoptimuman parameter imbasan. Oleh itu, dalam kajian ini, dos sinaran daripada imbasan CT dan risiko yang berkaitan kepada pesakit daripada amalan CT semasa telah dianalisis. Pada peringkat pertama, tesis ini memulakan perbincangan mengenai tahap pengetahuan dan kesedaran di kalangan kakitangan radiologi terhadap risiko sinaran CT dan pengoptimumannya. Tidak ada perbezaan yang signifikan mengenai pengetahuan semasa bagi pengoptimuman CT antara dua profesion yang berkaitan, perubahan dan kesihatan bersekutu. Kajian dos CT telah dijalankan di 8 kemudahan CT untuk tempoh 6 bulan, merangkumi data bagi 1024 pesakit dengan pelbagai pemeriksaan CT yang termasuk kawasan abdomen, kepala dan toraks. Perisian CT-EXPO (Versi 2.3.1, Jerman) telah digunakan untuk kesahan maklumat dos seperti indeks dos CT (CTDI) dan hasil darab panjang dos (DLP). Aras Rujukan Diagnostik (DRLs) yang dicadangkan telah ditunjukkan dengan membundarkan kuartil ketiga (Q3) taburan dos keseluruhan bagi pemberat CTDI (CTDI_w) (dalam mGy), isipadu CTDI (CTDI_{vol}) (dalam mGy) dan DLP (dalam mGy.cm) dan nilainya; masing-masing ialah 16, 17, dan 650 untuk CT abdomen; masing-masing ialah 70, 70, dan 1030 untuk CT otak dan masing-masing ialah 15, 16, dan 670 untuk CT toraks. Di peringkat kedua kajian, anggaran dan kiraan risiko kanser daripada pemeriksaan CT berdasarkan kepada Laporan Suruhanjaya Antarabangsa Perlindungan Sinaran (ICRP) Penerbitan 103 dan Laporan Kesan Biologi Sinaran Mengion (BEIR) ke-VII. Berdasarkan cadangan oleh BEIR-VII, kajian ini merangkumi risiko agihan jangkahayat (LARs) 100,000 populasi yang menjalani pemeriksaan CT abdomen untuk kanser perut ialah 2.3 bagi lelaki dan 1.0 bagi perempuan; sementara LARs bagi kanser kolon ialah 2.3 bagi lelaki dan 0.7 bagi perempuan. Keberkesanan pengoptimuman parameter CT dan aplikasi alat pelindung dalam prosedur CT rutin dinilai. Daripada 7 protokol (P1 - P7), faktor k adalah malar untuk semua protokol dan berkurang ~ 8% berbanding dengan faktor k semesta. Didapati kesemua faktor k daripada CT-EXPO berubah antara 0.010 bagi protocol P5 dan 0.015 bagi protocol P3 disebabkan oleh ketidakmalaran dalam keupayaan tiub dan faktor jarak. Aplikasi pelindung payudara kepada protokol CT toraks rutin berkurang kepada 14% dos setara payudara. Oleh itu, kajian ini menyokong kepentingan memulakan perlindungan dan proses pengoptimuman dalam pemeriksaan CT rutin untuk menawarkan amalan pengimejan yang lebih selamat.

TABLE OF CONTENTS

CHAPTER	TITLE	PAGE
	DECLARATION	v
	DEDICATION	vi
	ACKNOWLEDGEMENT	vii
	ABSTRACT	viii
	ABSTRAK	ix
	TABLE OF CONTENTS	x
	LIST OF TABLES	xv
	LIST OF FIGURES	xviii
	LIST OF ABBREVIATIONS	xxiii
	LIST OF APPENDICES	xxv
1	INTRODUCTION	1
	1.1 Overview	1
	1.2 Background of study	3
	1.3 Problem statement and motivation	8
	1.4 Research Objectives	10
	1.5 Scope of study	10
	1.6 Thesis outlines	11
2	LITERATURE REVIEW	12
	2.1 Introduction	12
	2.2 The Fundamental physics	12
	2.2.1 Production of X-rays	13
	2.2.2 Photon-Matter interaction	18
	2.2.2.1 Rayleigh scattering	20

2.2.2.2	Compton scattering	20
2.2.2.3	Photoelectric absorption	22
2.2.2.4	Pair production	23
2.2.2.5	Photon interaction in CT imaging	24
2.2.3	X-ray detection in CT	27
2.3	Principles of CT technology	29
2.3.1	Generations of CT scanner	33
2.3.1.1	First generation	34
2.3.1.2	Second generation	34
2.3.1.3	Third generation	35
2.3.1.4	Fourth generation	36
2.3.2	Modes of acquisition	36
2.3.2.1	Axial data acquisition	37
2.3.2.2	Helical data acquisition	38
2.4	Application of CT	38
2.5	Current dosimetry in CT	40
2.5.1	Computed Tomography Dose Index-100 (CTDI ₁₀₀) and Weighted CTDI (CTDI _w)	41
2.5.2	Volume CTDI (CTDI _{vol})	43
2.5.3	Dose-length Product (DLP) and Effective dose (E)	44
2.6	Factors that influence CT exposure	44
2.6.1	Equipment-related factors	45
2.6.1.1	Beam filtration	45
2.6.1.2	Bow-tie filter	46
2.6.1.3	Beam Collimation	46
2.6.1.4	Detector configuration	47
2.6.2	Application-related factors	49
2.6.2.1	Brooks Formula	49
2.6.2.2	Tube Current – Time Product	50
2.6.2.3	Tube Potential	50
2.6.2.4	Reconstructed CT slice thickness	51
2.6.3	Clinical CT considerations	52
2.7	CT optimization techniques	53
2.7.1	Automatic Tube Current Modulation (ATCM)	53

2.7.2	Optimal Tube Potential	55
2.8	CT Image Quality	56
2.9	Computational Anthropomorphic Phantom	57
2.9.1	XCAT hybrid phantoms	58
2.9.2	ICRP 110 phantoms	59
2.9.3	ImPACT stylized phantom	59
2.9.4	CT-EXPO stylized phantom	60
2.10	CT dose survey	60
2.10.1	Diagnostic Reference Levels (DRLs)	61
2.10.2	Tissue weighting factor	64
2.10.3	Effective dose based DLP method	65
2.10.4	Organ doses measurement	66
2.11	Radiation risk	68
2.11.1	Risk models for radiation-induced cancer	69
2.11.2	Review of radiation risks estimation	71
3	METHODOLOGY	74
3.1	Introduction	74
3.2	CT scanner	75
3.2.1	SIEMENS (SOMATOM Definition AS+)	76
3.2.2	SIEMENS (SOMATOM EMOTION)	77
3.3	Patient's Dosimetry Calculator (CT-EXPO)	78
3.3.1	Modules of CT-EXPO	80
3.3.2	Calculation module: Step by step	81
3.4	Survey study	82
3.4.2	CT Dose Survey	85
3.4.3	Characterization of CT scanner	86
3.4.4	Validating CTDI	88
3.4.5	Data integrity and statistical option	89
3.5	Cancer risk estimation	90
3.5.1	Cancer risk estimation based ICRP method	91
3.5.2	Cancer risk estimation based on patient's weight (CT abdomen)	92
3.5.3	Estimating LAR of CT abdomen examinations	94

3.5.4	BEIR VII risk coefficient (Third-order polynomial) method	96
3.6	CT Optimization study	97
3.6.1	Alderson-RANDO® anthropomorphic phantom	98
3.6.2	Dosimeter for measurement - TLD-100	100
3.6.3	Modification of CT thorax protocols	101
3.6.4	Phantom organ dose measurements	103
3.6.5	GMctdospp for dose simulation	105
4	RADIATION DOSE FROM CURRENT CT PRACTICE	107
4.1	Introduction	107
4.2	Radiology personnel survey	108
4.2.1	Demography of subjects	108
4.2.2	Awareness and knowledge of CT dose	110
4.2.3	Knowledge on current CT technology	112
4.2.4	Conclusion of the survey	114
4.3	CT Dose survey: An overview	115
4.3.1	Sample size	116
4.3.2	Patient characteristics	119
4.3.3	Scan parameters	120
4.3.4	Dose output	124
4.4	Assessing Diagnostic Reference Levels (DRLs)	126
4.4.1	Dose distribution	126
4.4.2	Proposing local DRL values	130
5	CANCER RISKS ESTIMATION IN CT	134
5.1	Introduction	134
5.2	Cancer risk estimation based ICRP method	135
5.2.1	Organ doses measurement	137
5.2.2	Risk assessment based on type of examinations	139
5.3	The lifetime attributable risk (LAR) of CT abdomen	142
5.4	Radiation risks from CTU examination	145
5.4.1	Patient characteristics and dose information	146
5.4.2	Cancer risk assessment	148

6	EMERGING DOSE OPTIMIZATION PROCESS IN CT	153
6.1	Overview	153
6.2	Evaluation of specific k coefficient	153
6.2.1	Organ doses measurement from TLD-100 and CT-EXPO	154
6.2.2	Effective dose based on ICRP 103, CT-EXPO and DLP method	156
6.2.3	Comparison with GMctdospp calculation	158
6.2.4	Outcome of the results	159
6.3	Breast dose optimization during CT thorax examination	161
6.3.1	Breast absorbed dose	161
6.3.2	Effectiveness of the optimization process	164
6.3.3	Assessment of Image Quality	165
6.3.4	Summary of the finding	167
7	CONCLUSIONS AND SUGGESTIONS	168
7.1	Conclusions	168
7.2	Suggestions	172
7.2.1	Size-specific dose estimates	172
7.2.2	Low dose simulation for optimization techniques	173
7.2.3	Iterative reconstruction algorithm	174
	REFERENCES	175

LIST OF TABLES

TABLE NO.	TITLE	PAGE
2.1	History of the progression of CT scans technology	32
2.2	Brief history on the developments of CT dosimetry	41
2.3	Current DRLs of Europe, Germany, UK, Malaysia and etc. based on latest national dose survey.	63
2.4	The comparison of tissue weighting factor from ICRP 106 and ICRP 103 publication.	64
2.5	Conversion of the k factors for adults and children of various ages based on the region of CT examinations.	66
2.6	Variation of techniques used by researchers in measuring the organs' effective dose.	67
2.7	Selected CT risk modeling studies providing cancer risk estimation from CT examinations.	73
3.1	Details of facilities, manufacturer, brands and configurations of detector and installation year used in the five hospitals	75
3.2	Technical specification of SOMATOM Definition AS+ scanner	77
3.3	Technical specification of the SOMATOM Emotion 16 scanner	78
3.4	The description of the toolbar function	81
3.5	Sample of the questions in the questionnaire survey form	84
3.6	Details of the hospital used for cancer risk estimation based on ICRP recommendation.	91
3.7	Cancer risk coefficient based on BEIR VII report	97

3.8	Routine and modified CT thorax acquisition parameters use in this study divided into 5 type including use with and without ATCM function.	103
4.1	The demographic information obtained from the questionnaire.	109
4.2	Mean score value of radiation awareness among respondents	111
4.3	Mean score in percentage concerning knowledge of dose in CXR equivalent for particular procedures	111
4.4	Percentage of correct answers by respondents regarding ATCM system	112
4.5	Percentage of correct answers by respondents regarding pitch factor	113
4.6	Mean score for all correct responses on knowledge of CT technology.	113
4.7	The number of the sample based on the region of examinations and research site.	117
4.8	The distribution of samples based on sex and ethnic of patients	118
4.9	Mean value of the patient characteristics in this survey	120
4.10	Mean value of computed tomography acquisition parameters for different hospitals and examinations	122
4.11	Mean computed tomography dose exposure for different hospitals and type of examinations	125
4.12	Proposed DRLs based on third quartile value of this work.	132
4.13	A comparison between a proposed DRLs in this study with National DRLs in 2013 and other DRLs.	133
5.1	Selected CT parameters and radiation dose information	136
5.2	Estimation of organ cancer risk according to the type of examinations	141
5.3	Data on patient characteristics of the 60 subjects included in this study.	142
5.4	Statistical analysis of patient dose information	143
5.5	LAR of stomach and colon based on gender and age.	144

5.6	The demographic of patient characteristics in this work	147
5.7	Statistical information on CT scan radiation dose	148
6.1	Organ equivalent dose from TLD measurement	157
6.2	A statistical comparison of effective dose from different protocols and method used.	158
6.3	A comparison between direct measurement values with GMctdospp simulation values	159
6.4	Mean absorbed dose and related ratio based on the position of the breast.	163
6.5	Analysis on measured radiation dose and outlook for the effectiveness of dose reduction	164
6.6	Analysis on the image quality of ROI (breast) to outlook the image noise	168

LIST OF FIGURES

FIGURE NO.	TITLE	PAGE
1.1	CT images of a neck. The upper right side is axial images of CT neck and it is followed by coronal images in lower right side. On the left upper side is a 3D image and below on the left side is a sagittal image of CT neck (Workstation images).	2
1.2	G.F Hounsfield with his first commercial CT scanner, EMI Mark I (Buzug <i>et al.</i> , 2009).	3
1.3	The number of CT scans examinations performed in the US (Smith-Bindman <i>et al.</i> , 2009)	4
1.4	Effective dose values from radiological examinations were based on the type of examinations, modality used and region of scanning (Hayton <i>et al.</i> , 2013).	5
1.5	Patients suffering from epilation due to CT brain perfusion examinations (New York Times Magazine, 2009)	6
1.6	The LNT model uses for estimate risk from low dose exposure (National Academy of Sciences, 2006)	7
1.7	The schematic diagram of thesis problem statement	9
2.1	An example of CT spectrum of a tungsten anode at acceleration voltages in the range of $U_a = 80 - 140$ kV. The anode angle is 10° with 2 mm thickness of aluminium filtration has been applied. The intensity versus wavelength plot displays the characteristics line as well as the continuous <i>bremsstrahlung</i> . As illustrated, a: indicates <i>bremsstrahlung</i> while b. characteristic emission. It has been observed that CT spectrum may also influence organ absorbed dose in patients (Buzug, 2008).	17
2.2	The theory of monochromatic X-ray attenuation. The photons are running through an object of thickness $\Delta\eta$ with a constant attenuation coefficient, μ . Equal parts of the absorbing medium attenuate equal fractions of the radiation.	19

2.3	Mass attenuation coefficient for different materials including bone and soft tissues versus the incident radiation energy. For absorption processes above the K-shell, the curve shows a fine line structure (Berger <i>et al.</i> , 1998)	23
2.4	Principles of photon-matter interaction. The Rayleigh and Compton scattering characteristic are illustrated as are the photoelectric and pair production absorption processes (Buzug, 2008).	25
2.5	Mass attenuation coefficient, μ/p , versus incident photon energy for lead (left) and water (right). As observed, the diagnostic energy range of CT, $E = 50 \text{ keV} - 140 \text{ keV}$, the photoelectric absorption is dominant for the lead while Compton scattering is dominant for water (Berger <i>et al.</i> , 1998).	26
2.6	Compton scattering becomes dominant in CT systems. Fig.a. schematic shown that the patient becomes a source of radiation himself. Fig.b and Fig.c, so-called scatter diagrams of a CT scan. Dose to the organs outside of the scan range of examination is largely from this interaction. Radiation protection to carers for paediatric must be planned on the basis of scattering diagrams.	26
2.7	Mass attenuation coefficient for the photon-interaction principles in materials detection. Photoelectric absorption is more than one magnitude higher than scattering processes in xenon(Xe) and the gadolinium oxysulphide ($\text{Gd}_2\text{O}_2\text{S}$) ceramic. The quantum efficiency of the ceramic material is superior due to the mass attenuation coefficient for photoelectric absorption in $\text{Gd}_2\text{O}_2\text{S}$ higher than xenon. In addition the density of the solid detector also higher than the density of xenon (Berger <i>et al.</i> , 1998).	28
2.8	Sample of the CT detector that enabling up to $256 \times 0.5 \text{ mm}$ collimation.	29
2.9	Technical principle of conventional x-ray tomography.	30
2.10	Conventional kidney tomogram of an adult males (Medscape, 2010)	31
2.11	The first arrangement of CT. The axial slice through the patient is swept out by the pencil-width X-ray beam with the x-ray tube linked perpendicularly to the detector, both moving across subjects in linear translation and repeated at many angles. The thickness of beam is equivalent to slice thickness (Goldman, 2007).	33

2.12	The second generation scanners were translate/rotate systems, similar to the first generation..	35
2.13	Configuration of third generation CT scanner	36
2.14	Standard CTDI phantom. Most CTDI phantoms have similar design and length but with different diameter of 32 cm and 16 cm, representing body and head respectively (ICRU, 2012).	43
2.15	An example of a fixed tube current modulation during CT scan examination.	54
2.16	An example of a CT thorax ATCM function, consisting of both x-y and z-axis modulation of the tube current.	54
2.17	From left is XCAT male and female reference phantom, followed by ICRP male and female reference phantom (Golem and Laura). CT-Impact used half hermaphrodite phantom and following on the right side are Adam and Eve, CT Expo stylized reference phantom (Zhang <i>et al.</i> , 2012).	58
2.18	Age-time patterns in radiation-induced cancer risk for solid cancer incidence. Curves are sex-averaged estimates of the risk at 1 Sv for people at age 10 (solid line), age 20 (dashed line) and age 30 and above (dotted lines).	70
2.19	Age-time patterns in radiation-induced cancer risk for solid cancer mortality. Curves are sex-averaged estimates of the risk at 1 Sv for people at age 10 (solid line), age 20 (dashed line) and age 30 and above (dotted lines).	71
3.1	The SOMATOM Definition AS+ scanner capable of employing a configuration of 128 detectors although built-up only with the 64 set of the detector.	76
3.2	Phantom of ADAM and EVE. The phantom was used as the main reference for CT-EXPO in determining organ dose.	79
3.3	The first interface menu of CT-EXPO after starting the software. Noting that, there are four main modules available that can be chosen for CT dosimetry calculation.	80
3.4	Navigation toolbar: mostly useful for changing features during calculation.	81
3.5	Schematic procedure of calculations module	82
3.6	Unfors XI, a multifunction meter was used to measure radiation output.	87

3.7	A brief setup on measuring CT air kerma by using adapted multifunction meter.	88
3.8	Box-Whisker plot showing difference range of quartile value.	90
3.9	Mathematical stylized phantom of ADAM and EVE, shaded region show the range of scanning during CTU examination.	94
3.10	The cancer incidence risk of stomach and colon cancer for Malaysian population based on registry report of 2007.	96
3.11	A Rando phantom was setup first before use for study.	99
3.12	Mid-lung axial images of Alderson phantom. Small holes that fill the TLD were distributed over the phantom.	99
3.13	Encapsulated TLD was numbered before use for direct measurement	101
3.14	A bismuth breast shielding (AttenuRad®) was put on the top of the breast. This applies in protocols P6 and P7 of this study.	102
3.15	DICOM images showing holes for TLD placement in slab 23	104
3.16	Both breasts were divided into 4 quadrants where initiated with the superior aspect of the lateral breast. Each quadrant was named as R/L quadrants (Egg RQ1 = right quadrant 1)	104
3.17	The framework of GMctdospp; simulations are controlled by the HTCondor server that manages the user code and EGSnrc environment (Schmidt <i>et al.</i> , 2015).	105
3.18	GMctdospp interface compatibility with GUI from DicomRT struct format	106
4.1	Bar-chart graph showing the number of samples based on specific age group and region of examinations.	118
4.2	Boxplot showing the distribution of CTDI _w (mGy) for four main regions of examinations in this study.	127
4.3	Boxplot showing the distribution of CTDI _{vol} (mGy) for four main regions of examinations in this study.	128
4.4	Boxplot showing the distribution of DLP (mGy.cm) for four main regions of examinations in this study.	129

4.5	Boxplot showing the distribution of E (mSv) for four main regions of examinations in this study.	130
5.1	The distributions of the equivalent dose to the relevant organs for CT brain examination	138
5.2	The distributions of the equivalent dose to the relevant organs for CT thorax examination	138
5.3	The distributions of the equivalent dose to the relevant organs for CT abdomen examination	139
5.4	The distribution of estimated organ dose values among subjects	143
5.5	Distribution of cancer risk per 100,000 population based on age.	145
5.6	Scatter plot graph of cancer risk per 100 000 population based on gender and age	149
5.7	Scatter plot graph of cancer risk per 100 000 population based on organ site	150
5.8	Distribution of cancer risk per 100 000 population based on gender.	151
5.9	Distribution of cancer risk per 100 000 population based on organ-specific dose	152
6.1	Organ absorbed dose measured using CT-EXPO and TLD	155
6.2	Total cumulative effective dose of 5 optimization protocols	157
6.3	Mean breast absorbed dose obtained for selected parameters	162
6.4	Region of interest (ROI) of ~100 mm x 10 mm in circle form was specified on lung, breast, and heart.	168

LIST OF ABBREVIATIONS

AAPM	-	American Association of Physicist in Medicine
AEC	-	Automatic Exposure Control
ATCM	-	Automatic Tube Current Modulation
BEIR	-	Biological Effects of Ionizing Radiation
BMI	-	Body-Mass Index
BSS	-	Basic Safety Standard
CME	-	Continuous Medical Education
CNR	-	Contrast-to-Noise Ratio
CT	-	Computed Tomography
CTDI	-	CT Dose Index
CTDI-100	-	CT Dose Index from 100 mm
CTDI _w	-	Weighted CTDI
CTDI _{vol}	-	Volume CTDI
CTU	-	CT Urography
CXR	-	Chest X-ray
DLP	-	Dose-Length Product
DDREF	-	Dose and Dose-Rate Effectiveness Factor
EAR	-	Excess Absolute Risk
ERR	-	Excess Relative Risk
FWHM	-	Full-Width at Half-Maximum
GUI	-	Graphical User Interface
HPA	-	Health Protection Agency, United Kingdom
ICRP	-	International Commission on Radiation Protection
IVU	-	Intravenous-Urography
IAEA	-	International Atomic Energy Agency
LAR	-	Lifetime Attributable Risk
LNT	-	Linear Non-Threshold model

LSS	-	Life Span Study
MC	-	Monte Carlo
MIRD	-	Medical Internal Radiation Dose
MSAD	-	Multiple Scan Average Dose
MSCT	-	Multi-Slice CT
NMRR	-	National Medical Research Registration
NURBS	-	Non-Uniform Rational B-Splines
OD	-	Optical Density
PET	-	Positron Emission Tomography
PMMA	-	Poly-Methyl Methacrylate
POSDE	-	Patient- and Organ- Specific Dose Estimation
PPM	-	Planned and Preventive Maintenance
Q3	-	Third quartiles
QA	-	Quality Assurance
SNR	-	Signal-to-Noise Ratio
SSCT	-	Single-Slice CT
SSDL	-	Secondary Standard Dosimetry Laboratory
TF	-	Table-Feed
TL	-	Thermo-Luminescence
TLD	-	TL dosimeter
UFC	-	Ultra-Fast Ceramic
UNSCEAR	-	United Nation Scientific Committee on Effects of Atomic Radiations
WHO	-	World Health Organization

LIST OF APPENDICES

APPENDIX	TITLE	PAGE
A	Approval letter from National Medical Research Registration (NMRR) board for conducting research in government hospital (ID: NMRR-14-606-20966)	191
B	Questionnaires form on radiation awareness and knowledge of CT optimization technique among radiology staff	192
C	CT protocols and dose calculation survey form	198
D	CT scanner quality control form	200
E	List of awards and publications	201

CHAPTER 1

INTRODUCTION

1.1 Overview

Since the discovery of X-rays by Wilhelm Conrad Roentgen in the year 1885, the field of medicine has been revolutionized and utilized by a medical field known as radiology. Radiology is one of the branches of medicine that uses various imaging techniques and modalities to produce high-quality images of human anatomy with the aim to provide an accurate diagnosis of diseases. Henceforth, a lot of imaging modalities use X-rays as the main emitting source due to its advantages in providing high contrast radiographic images, including the Computed Tomography (CT) scan.

CT is one of the most vital imaging modalities in radiology, capable of producing high contrast sectional images. The X-rays that transmit through the human body are detected by a detector in a circular motion along the x-y axis. Subsequently, computer processing of the raw data produced from the received detector using Rando transform algorithm, reproducing sectional images in the form of axial, sagittal-coronal and 3D images, as in Figure 1.1 and the details in Chapter 2. The sectional images allows the Radiologist to diagnose diseases accurately in a clinical situation better than 2D radiographic images of conventional X-ray machines (Goo, 2012; Lee *et al.*, 2004).

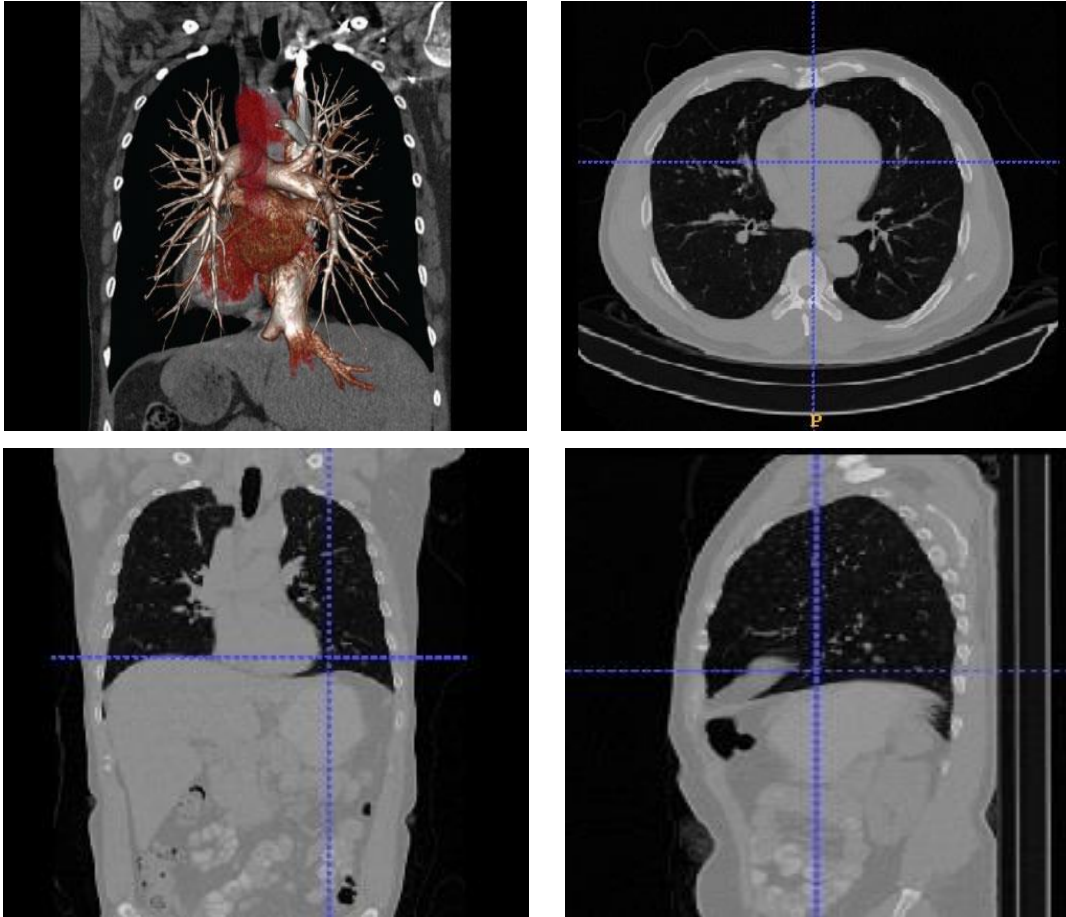


Figure 1.1 CT images of a thorax. The upper right side is axial images of CT thorax and it is followed by sagittal images in lower right side. On the left upper side is a 3D image of CT pulmonary and below on the left side is a coronal image of CT thorax (Workstation images).

Nowadays, CT has become a one of the recognized diagnostic imaging tools for radiological investigation since the inception of the CT scan EMI Mark I by Godfrey Hounsfield in 1972 (Jessen *et al.* 1999; Tsapaki *et al.* 2010; Rehani 2012; Kalender 2014; Hounsfield 1976a). Unlike film-cassettes techniques, which use a larger but passive detector, CT has minimized the unnecessary amount of scattered radiation by allowing sequential irradiation slabs of tissue and collimation of the detector. Furthermore, in the year 1988, a slip-ring technology was introduced that made a continuous rotation of the gantry and detectors possible (Kalender *et al.*, 2008). Thus, during helical mode acquisition, the table is able to move continuously while the detectors are rotating and produce images by utilizing interpolation

techniques. This allows spiral CT capable in obtaining a larger volume of information in sub-second time, resulting in shorter breath hold and subsequently, minimizes motion artifacts. However, despite its benefits, the CT scan is considered as one of the most hazardous imaging modality as it contributes greater dose exposure.



Figure 1.2 G.F Hounsfield with his first commercial CT scanner, EMI Mark I (Buzug *et al.*, 2009).

1.2 Background of study

The advancement of CT technology and requisite for better image quality lead to the geometry of the CT systems becoming much more complex and with the employment of more detectors (Fuchs *et al.*, 2000). Therefore, the dosimetry in CT has become a challenging task for many researchers with the addition of the increasing demand for individual dose tracking in medical imaging (Fearon *et al.*, 2011).

In the year 2001, the International Commission on Radiological Protection (ICRP) raised concern that with increased use of CT there was a possibility that the

radiation dose from CT examinations was high. A 2006 United States (US) radiation dose survey categorized CT exams as the largest source of medical exposure in the USA (National Academy of Sciences, 2006). This trend is due to the advantages of CT modality in providing the high diagnostic value of images with faster and accurate diagnosis which steered to a number of unjustified request for CT examinations by physicians. With increase in public concern, many agencies introduced monitoring processes also establishing Diagnostic Reference Levels (DRLs). As expected, the multinational surveys show that with radiation doses from CT exceeding reference levels this could increase the risk of cancer (radiation-induced cancer) (Brenner, 2012; Hall and Brenner, 2008; Feng *et al.*, 2010; Swanson, 2012).

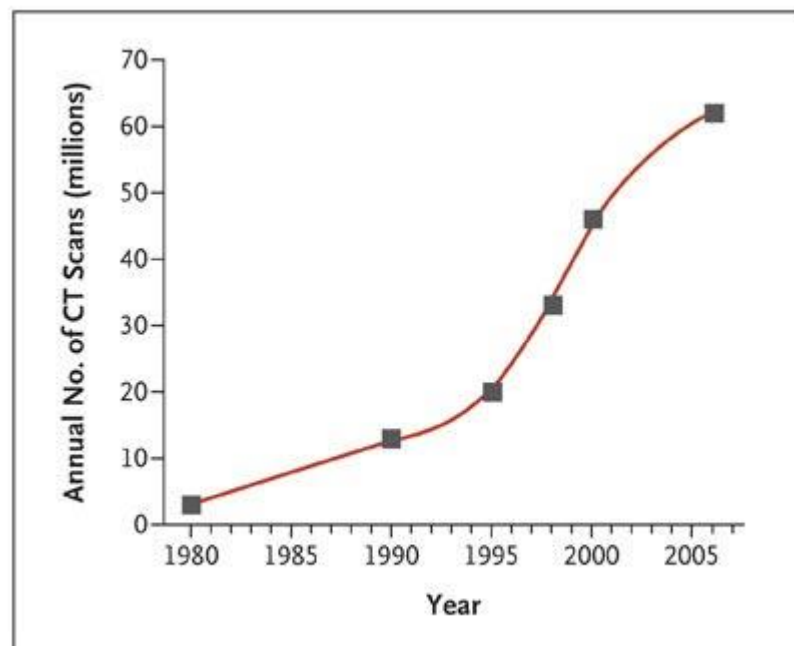


Figure 1.3 The number of CT scans examinations performed in the US (Smith-Bindman *et al.*, 2009)

In 2003, a survey conducted in the UK by Health Protection Agency (HPA) indicated that the total effective population radiation dose to be 47% even though it only represented 9% of all x-ray examinations done in the country (Jones and Shrimpton, 1991; Shrimpton *et al.*, 2006). According to Naumann *et al.* (2014), the risk of radiation is greater for pediatric patients as they receive higher absorbed dose

compared to an adult even using the same scan parameters (Naumann *et al.*, 2014; Rehani *et al.*, 2012). As illustrated in Figure 1.4, the radiation dose to patients varies based on the type or region of examinations, the abdominal CT investigations have the highest effective dose values (Sokolovskaya and Shinde, 2016; Pantos *et al.*, 2011; Sabarudin *et al.*, 2015)

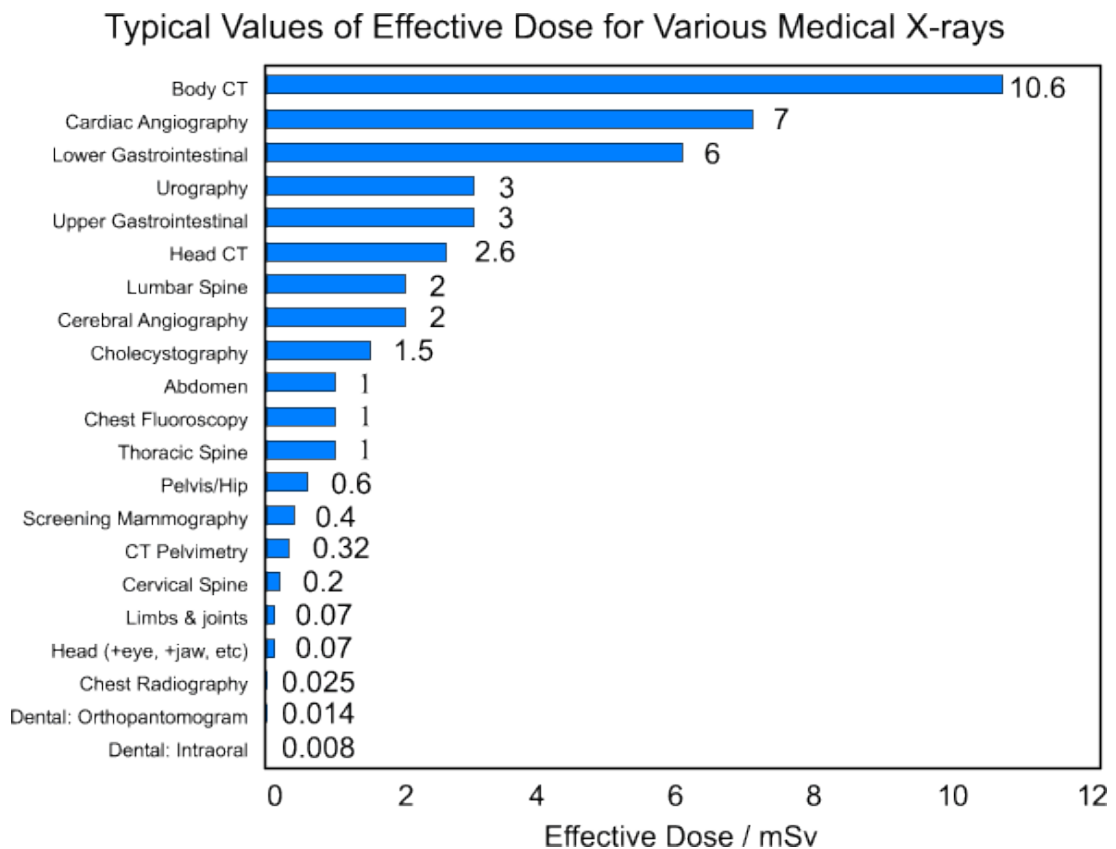


Figure 1.4 Effective dose values from radiological examinations were based on the type of examinations, modality used and region of scanning (Australian Radiation Protection, 2013).

As a result of the increased utilization of CT and increasing radiation dose to the population, CT optimization techniques have become a major focus of the medical research community. Furthermore, much research has focused on finding the most accurate means of dosimetry, patient-specific, although current existing dosimetry for CT system are still usable worldwide (Edyvean, 2013; Fearon *et al.*, 2011; Jessen *et al.*, 1999; Tsalafoutas *et al.*, 2012). This includes the use of the Monte Carlo (MC) simulation method such as anthropomorphic mathematical

simulation as well as the use of direct methods using small dosimeters, for instance thermoluminescence dosimeters (TLD).

Generally, the biological risk associated with the exposures of individual or populations to ionizing radiation can be categorized into two effects; deterministic and stochastic effects (Alpen, 1998). Deterministic effects are the acute outcomes of the absorbed dose when exceeding a certain threshold (> 1 Gy). The doses received from CT examinations typically are much lower compared to dose threshold, ranging from 10 – 50 mGy. The dose delivered from CT to a specific anatomical region is sometimes repeated up to three phases depending on the clinical needs (Kalender, 2014). As consequences, effects such as hair loss, skin injuries and erythema have been reported, especially from CT brain perfusion studies as shown in Figure 1.5.



Figure 1.5 Patients suffering from epilation due to CT brain perfusion examinations (New York Times Magazine, 2009)

Stochastic effects of radiation describe the potential chronic risks of radiation exposure. Generally, the typical doses from radiological examinations do not cause immediate cell death, but the ionization process could result in DNA strand breaks. The DNA strand breaks are commonly caused by the interaction of DNA hydroxyl with the ionized atoms and become hydroxyl radicals. These DNA breaks are usually repaired by cellular repair mechanism or the cell is into apoptosis. In the case of incorrect repair of DNA, cell proliferation continues despite genetic mutation and led to carcinogenesis effects.

Normally, the risk from radiation has been defined by using the linear non-threshold model (LNT), based on epidemiological studies including data from 1945 atomic bomb survivors (Figure 1.6) (National Academy of Sciences, 2006). Although the LNT models at low dose have been questioned for accuracy, many researchers show great interest in estimating cancer risk from CT examinations as radiation dose from CT is quite high and potentially more hazardous compared to other modalities. The various techniques of calculation and new applications have been introduced in order to demonstrate an overview of cancer risk from CT. Concerning the above matter, it is necessary to properly assess and monitor radiation dose from CT examinations, in particular, estimating the patient- and organ- specific dose (POSDE) and risk.

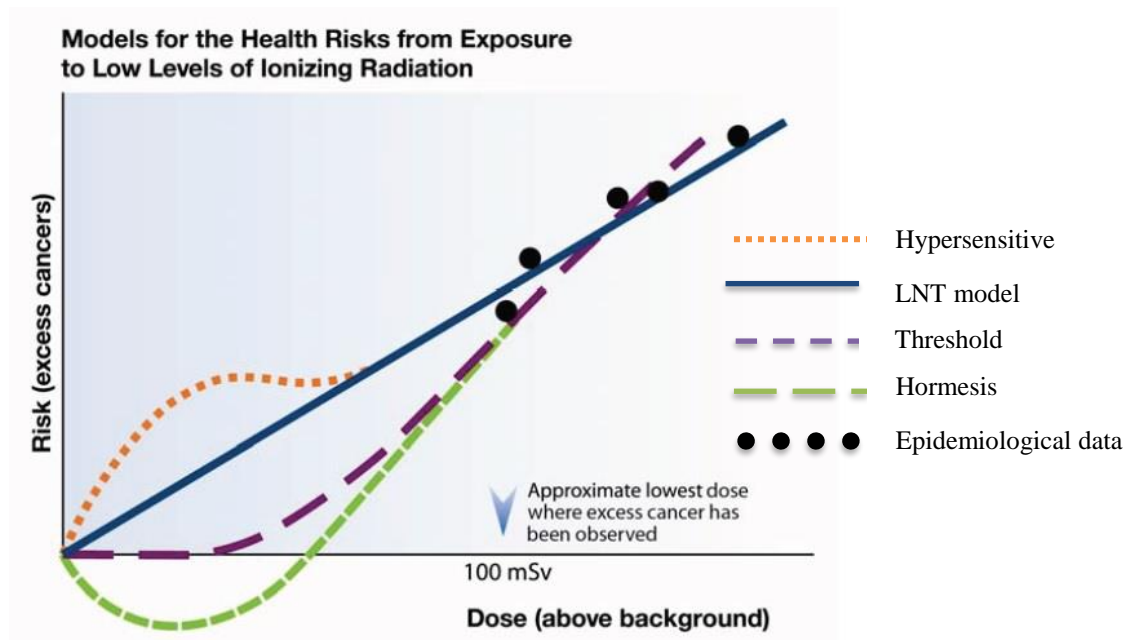


Figure 1.6 The LNT model uses for estimate risk from low dose exposure (Canadian Nuclear Safety Commission, 2013)

1.3 Problem statement and motivation

A number of studies have related that exposure from CT scans is responsible for increasing the risk of cancer (Brenner and Hall, 2007; Berrington de Gonzalez *et al.*, 2009). Brenner predicted radiation-related risks in a population by using the data from survivors of the atomic bombs dropped on Japan in 1945, where the average effective dose is around 20 mSv (Brenner and Hall, 2007; Naumann *et al.*, 2014).

As conclusion, they have established finding that the dangers of malignant neoplastic disease are greater for paediatrics than adults as paediatric patients are more radio-sensitive to radiation and have a longer lifespan to get cancer. Furthermore, Berrington *et al.* reported that 29,000 of future cancers could be linked to CT scans performed in the USA in 2007 (Berrington *et al.*, 2009). Consequently, this has alarmed responsible agencies such as the ICRP, United Nation Scientific Committee on Effects of Atomic Radiations (UNSCEAR), American Association of Physicist in Medicine (AAPM), the International Atomic Energy Agency (IAEA) and have alerted the public that the radiation risk from CT may possibly be harmful and dangerous (Rehani, 2012; AAPM Task Group 23, 2008; UNSCEAR, 2010; Balonov and Shrimpton, 2012).

The primary goal of this study is to measure radiation dose from routine CT examinations and to introduce accurate CT dosimetry that matches to Malaysian clinical practice. It is also essential to estimate the risk to Malaysian populations that have undergone CT examinations since there are several issues related to the inaccuracy of standard CT dosimetry that need to be addressed. Figure 1.7 shows schematically the problem statement of the current study. In general, the present study is intended to provide information on the issues of current dosimetry in CT technology. The data obtained from the study forms part of the review of the present situation of CT dosimetry and its related health risks. In future, this thesis could also be used as a supplementary document in support of baseline information on the recent situation of CT dosimetry in Malaysia.

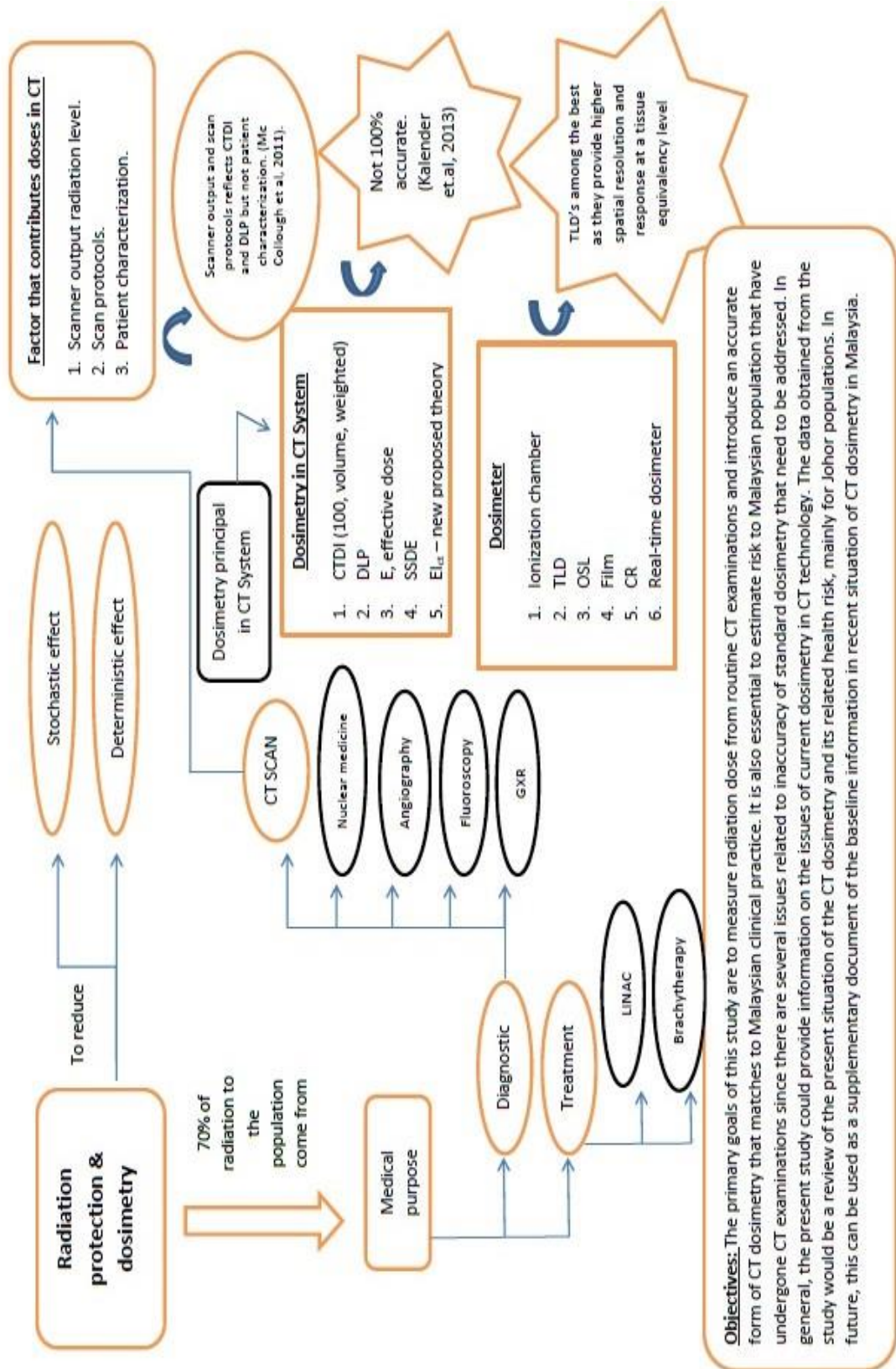


Figure 1.7 The schematic diagram of thesis problem statement

1.4 Research Objectives

The objectives of this study are:

- 1) To assess knowledge and awareness of radiology personnel towards optimization techniques and radiation risk of CT examinations.
- 2) To evaluate the standard acquisition protocols and radiation dose exposure received by the patient from current CT practice, finally establishing local DRLs.
- 3) To measure the radiation risk from CT scan cohort studies using a variety of calculation methods.
- 4) To investigate organ absorbed dose and CT optimization techniques on an adult anthropomorphic phantom.
- 5) To introduce a method for the determination of patient- and organ- specific dose (POSDE) by using Monte Carlo simulation method.

1.5 Scope of study

The scope of the study involves determination of the accuracy of organ radiation dose measurement from CT examinations and the evaluation of related radiation risk. To achieve this, the study was divided into three parts;

- 1) Part I: The data was obtained from the survey method and cross-validated with standard mathematical stylized phantom measurements. Local DRLs were established and radiology personnel awareness relationship was evaluated.

- 2) Part II: Various methods of calculation based on ICRP and BEIR VII were used to estimate patient organ dose and radiation risk. The risk calculation was made on the whole perspective and then narrowed down to specific clinical CT examinations.
- 3) Part III: Direct measurements were used to estimate patient organ dose by inserting dosimeters such as TLDs into a physical anthropomorphic phantom. Further, steps for optimization techniques of current CT practice were introduced.

1.6 Thesis outlines

This thesis gives a comprehensive overview of CT practice in Johor state including dose exposure evaluation, organ absorbed dose assessment, radiation risk among the population, steps for optimization and the introduction of novel applicable method for evaluating individual specific dose. The basics of the dosimetry and estimation of risk is undoubtedly mathematics. However, the beauty of computed tomography cannot be understood without a basic knowledge of X-ray physics and signal processing. With respect to the title of this thesis, it is structured to provide understanding in current CT practice.

In Chapter 2, the fundamentals of CT dosimetry, the milestones and current research in CT dosimetry and its related risks are briefly explained. In Chapter 3, the materials and method used are discussed briefly. In Chapter 4, Chapter 5 and Chapter 6 the results and discussion will be presented on; the establishment of DRLs, radiation risk measurement, and optimization process, respectively. Furthermore, the conclusion of the thesis will be provided in Chapter 7.

REFERENCES

- AAPM Task Group 23. (2008). *AAPM Report No. 96 - The Measurement, Reporting and Management of Radiation Dose in CT*. Virginia. AAPM.
- Abuhaimed, A., Martin, C. J., Sankaralingam, M., & Gentle, D. J. (2015). A Monte Carlo investigation of cumulative dose measurements for cone beam computed tomography (CBCT) dosimetry. *Physics in Medicine and Biology*, 60(4), 1519–1542.
- Agarwal, A. (2014). *Simulation Studies of Recombination Kinetics and Spin Dynamics in Radiation Chemistry*. Springer Science & Business.
- Alpen, E. L. (1997). *Radiation biophysics*. Academic Press.
- Alzimami, K., Sulieman, A., Omer, E., Suliman, I. I., & Alsafi, K. (2013). Effective dose estimation during conventional and CT urography. *Radiation Physics and Chemistry*, 104, 154–157.
- Angel, E. (2009). *Estimating Radiation Dose to Organs of Patients Undergoing Conventional and Novel Multidetector CT Exams Using Monte Carlo Simulations*. Doctorate dissertation, University of California.
- Australian Radiation Protection agency, (2013). Typical values of effective dose for various medical X-rays. ARPANSA; Australia.
- Balonov, M. I., & Shrimpton, P. C. (2012). Effective dose and risks from medical X-ray procedures. *Annals of the ICRP*, 41(3-4), 129–41.
- Beister, M., Kolditz, D., & Kalender, W. A. (2012). Iterative reconstruction methods in X-ray CT. *Physica Medica*. 28(2), 94–108.
- Bernier, M.-O., Journy, N., Baysson, H., Jacob, S., & Laurier, D. (2014). Potential cancer risk associated with CT scans: Review of epidemiological studies and ongoing studies. *Progress in Nuclear Energy*.
- Berrington de Gonzalez, A., Berg, C. D., Visvanathan, K., & Robson, M. (2009). Estimated risk of radiation-induced breast cancer from mammographic screening for young BRCA mutation carriers. *Journal of the National Cancer*

Institute, 101(3), 205–9.

- Blumenthal, G. R., & Gould, R. J. (1970). Bremsstrahlung, synchrotron radiation, and Compton scattering of high-energy electrons traversing dilute gases. *Reviews of Modern Physics*, 42(2), 237.
- Bogdanich, W. A. (2009). Radiation overdoses point up dangers of CT scans. *The New York Times*, p. 15.
- Brady, S., Yoshizumi, T., Toncheva, G., & Frush, D. (2010). Implementation of radiochromic film dosimetry protocol for volumetric dose assessments to various organs during diagnostic CT procedures. *Medical Physics*, 37(9), 4782.
- Brenner, D. J., & Elliston, C. D. (2004). Estimated radiation risks potentially associated with full-body ct screening 1. *Radiology*, 232(3), 735-738.
- Brenner, D. J., & Hall, E. J. (2012). Cancer risks from CT scans: now we have data, what next?. *Radiology*, 265(2), 330-331.
- Brenner, D. J., & Hall, E. J. (2007). Computed tomography--an increasing source of radiation exposure. *The New England Journal of Medicine*, 357, 2277–2284.
- Brix, G., Lechel, U., Veit, R., Truckenbrodt, R., Stamm, G., Copenrath, E.M., Griebel, J. and Nagel, H.D. (2004). Assessment of a theoretical formalism for dose estimation in CT: an anthropomorphic phantom study. *European Radiology*, 14(7), 1275–84.
- Brix, G., Nagel, H. D., Stamm, G., Veit, R., Lechel, U., Griebel, J., & Galanski, M. (2003). Radiation exposure in multi-slice versus single-slice spiral CT: results of a nationwide survey. *European Radiology*, 13(8), 1979–91.
- Brooks, R. A. (1977). A quantitative theory of the Hounsfield unit and its application to dual energy scanning. *Journal of computer assisted tomography*, 1(4), 487-493.
- Brooks, R. A., & Di Chiro, G. (1975). Theory of image reconstruction in computed tomography. *Radiology*, 117(3 Partt 1), 561–72.
- Brunt, A. M., Lupton, S., Thorley, K., Pearce, L., & Handley, J. (2016). Comparison of CT-volumed supraclavicular fossa radiotherapy planning and conventional simulator-planned defined by bony landmarks for early breast cancer. *Reports of Practical Oncology & Radiotherapy*, 21(3), 219–224.
- Burrage, J. W., & Causer, D. A. (2006). Comparison of scatter doses from a multislice and a single slice CT scanner. *Australasian Physics & Engineering Sciences in Medicine*, 29(3), 257–259.

- Butker, E. K., Loo, L. D., & Salter, B. J. (2003). Quality assurance for computed-tomography simulators and the computed- tomography-simulation process : Report of the AAPM Radiation Therapy Committee Task Group No . 66, (66), 2762–2792.
- Buzug, T. M. (2008). *Computed tomography: from photon statistics to modern cone-beam CT*. Springer Science & Business Media.
- Canadian Nuclear Safety Commission. (2013). CNSC Online-Canadian Nuclear Safety Commission.
- Chang, Y.-L., Lee, C.-M., Hsiao, W.-T., Hsu, F.-Y., Kuo, M.-J., & Chiu, J.-H. (2010). Dose evaluation of multi-slice CT for different parameters in chest examinations using TLD method. *Radiation Measurements*, 45(3-6), 701–703.
- Chen, W., Kolditz, D., Beister, M., Bohle, R., & Kalender, W. a. (2012). Fast on-site Monte Carlo tool for dose calculations in CT applications. *Medical Physics*, 39(6), 2985–96.
- Christner, J. A, Kofler, J. M., & McCollough, C. H. (2010). Estimating effective dose for CT using dose-length product compared with using organ doses: consequences of adopting International Commission on Radiological Protection publication 103 or dual-energy scanning. *AJR. American Journal of Roentgenology*, 194(4), 881–9.
- European Commission. (1997). European Guidelines on Quality Criteria For Computed Tomography. *EUR 16262 EN*.
- Gross, C.J., Ginter, T.N., Shapira, D., Milner, W.T., McConnell, J.W., James, A.N., Johnson, J.W., Mas, J., Mantica, P.F., Auble, R.L. and Das, J.J. (2000). Performance of the recoil mass spectrometer and its detector systems at the holifield radioactive ion beam facility. *Nuclear Instruments and Methods in Physics Research Section A: Accelerators, Spectrometers, Detectors and Associated Equipment*, 450(1), 12-29.
- Deak, P. D., Langner, O., Lell, M., & Kalender, W. A. (2009). Effects of Adaptive Section Collimation on Patient Radiation Dose in Multisection Spiral CT 1. *Radiology*, 252(1), 140–147.
- Deak, P. D., Smal, Y., & Kalender, W. A. (2010). Multisection CT Protocols: Sex- and Age-specific Conversion Factors Used to Determine Effective Dose from Dose-Length Product. *Radiology*, 257(1), 158–166.
- DeMarco, J. J., Cagnon, C. H., Cody, D. D., Stevens, D. M., McCollough, C. H.,

- O'Daniel, J., & McNitt-Gray, M. F. (2005). A Monte Carlo based method to estimate radiation dose from multidetector CT (MDCT): cylindrical and anthropomorphic phantoms. *Physics in Medicine and Biology*, *50*(17), 3989–4004.
- DeWerd, L. A., & Kissick, M. (2014). The Phantoms of Medical and Health Physics. *The Phantoms of Medical and Health Physics: Devices for Research and Development, Biological and Medical Physics, Biomedical Engineering*. (1st ed.). Springer Science+ Business Media New York.
- Duan, X., Wang, J., Yu, L., Leng, S., & McCollough, C. H. (2011). CT scanner x-ray spectrum estimation from transmission measurements. *Medical Physics*, *38*(2), 993.
- Ebara, K., Takashima, S., Jiang, B., Numasaki, H., Fujino, M., Tomita, Y., ... Higashiyama, M. (2015). Pleural invasion by peripheral lung cancer: prediction with three-dimensional CT. *Academic Radiology*, *22*(3), 310–9.
- Edyvean, S. (2003). *Effect of ROI Size on Image Noise*. Unpublish note, ImpACT team, United Kingdom.
- Edyvean, S. (2013). CT equipment and performance issues: radiation protection 162. *Radiation Protection Dosimetry*, *153*(2), 190–6.
- Eller, A., Wuest, W., Scharf, M., Brand, M., Achenbach, S., Uder, M., & Lell, M. M. (2013). Attenuation-based automatic kilovolt (kV)-selection in computed tomography of the chest: effects on radiation exposure and image quality. *European Journal of Radiology*, *82*(12), 2386–91.
- Fearon, T., Xie, H., Cheng, J. Y., Ning, H., Zhuge, Y., & Miller, R. W. (2011). Patient-specific CT dosimetry calculation: a feasibility study. *Journal of Applied Clinical Medical Physics / American College of Medical Physics*, *12*(4), 3589.
- Ferreira, C. C., Vieira, J. W., & Maia, A. F. (2009). The influence of calculated CT X-ray spectra on organ absorbed dose to a human phantom. *Nuclear Instruments and Methods in Physics Research Section B: Beam Interactions with Materials and Atoms*, *267*(20), 3447–3455.
- Fessler, J. (2009). *X-ray imaging : noise and SNR*. Image reconstruction: Algorithms and analysis. Elsevier.
- Foley, S. J., Evanoff, M. G., & Rainford, L. A. (2013). A questionnaire survey reviewing radiologists' and clinical specialist radiographers' knowledge of CT

- exposure parameters. *Insights into Imaging*, 4(5), 637–46.
- Friberg, E. G., Almen, A., Einarsson, G., Järvinen, H., Leitz, W., Waltenburg, H., & Bly, R. (2008). Doses from pediatric CT examinations and level of optimization of the scan protocols in the Nordic countries. In *Proceedings of the 15th Nordic Society for Radiation Protection (NSFS) conference* (pp. 26-30).
- Fuchs, T., Kachelriess, M., & Kalender, W. A. (2000). Technical advances in multi-slice spiral CT. *European Journal of Radiology*, 36(2), 69–73.
- Funama, Y., Taguchi, K., Utsunomiya, D., Oda, S., Murasaki, H., Yamashita, Y., & Awai, K. (2012). Dose profiles for lung and breast regions at prospective and retrospective CT coronary angiography using optically stimulated luminescence dosimeters on a 64-detector CT scanner. *Physica Medica*, 28(1), 76–82.
- Galanski, M., Nagel, H. D., & Stamm, G. (2005). Paediatric CT exposure practice in the Federal Republic of Germany. *Results of a nation-wide survey in 6, 2006*.
- Ghavami, S.-M., Mesbahi, A., Pesianian, I., Shafae, A., & Aliparasti, M.-R. (2010). Normoxic polymer gel dosimetry using less toxic monomer of N-isopropyl acrylamide and X-ray computed tomography for radiation therapy applications. *Reports of Practical Oncology and Radiotherapy : Journal of Great Poland Cancer Center in Poznań/ 15(6)*, 172–5.
- Goldman, L. W. (2007). Principles of CT and CT technology Vol1. *Journal of Nuclear Medicine Technology*, 35(3), 115–28; quiz 129–30.
- Goldman, L. W. (2007). Principles of CT: radiation dose and image quality Vol2. *Journal of Nuclear Medicine Technology*, 35(4), 213–25; quiz 226–8.
- Gonzaga, N. B., Mourão, A. P., Magalhães, M. J., & da Silva, T. A. (2014). Organ equivalent doses of patients undergoing chest computed tomography: measurements with TL dosimeters in an anthropomorphic phantom. *Applied Radiation and Isotopes : Including Data, Instrumentation and Methods for Use in Agriculture, Industry and Medicine*, 83(1), 242–4.
- de González, A. B., Mahesh, M., Kim, K. P., Bhargavan, M., Lewis, R., Mettler, F., & Land, C. (2009). Projected cancer risks from computed tomographic scans performed in the United States in 2007. *Archives of internal medicine*, 169(22), 2071-2077.
- Goo, H. W. (2012). CT radiation dose optimization and estimation: an update for radiologists. *Korean journal of radiology*, 13(1), 1-11.
- Gu, J., Bednarz, B., Caracappa, P. F., & Xu, X. G. (2009). The development,

- validation and application of a multi-detector CT (MDCT) scanner model for assessing organ doses to the pregnant patient and the fetus using Monte Carlo simulations. *Physics in medicine and biology*, 54(9), 2699.
- Hall, E. J., & Brenner, D. J. (2008). Cancer risks from diagnostic radiology. *The British Journal of Radiology*, 81(965), 362–78.
- Hart, D., Hillier, M. C., & Wall, B. F. (2009). National reference doses for common radiographic, fluoroscopic and dental X-ray examinations in the UK. *The British Journal of Radiology*, 82(973), 1–12.
- Hayton, A., Wallace, A., Marks, P., Edmonds, K., Tingey, D., & Johnston, P. (2013). Australian diagnostic reference levels for multi detector computed tomography. *Australasian Physical and Engineering Sciences in Medicine*, 36(1), 19–26.
- Hill, B., Venning, A. J., & Baldock, C. (2008). Polymer gel dosimetry on a multislice computed tomography scanner: effect of changing parameters on CTDI. *Physica Medica* 24(3), 149–58.
- Holmberg, O., Malone, J., Rehani, M., McLean, D., & Czarwinski, R. (2010). Current issues and actions in radiation protection of patients. *European Journal of Radiology*, 76(1), 15–9.
- Hoppe, M. E., Gandhi, D., Stevens, G. M., Foley, W. D., & Schmidt, T. G. (2013). The effects of gantry tilt on breast dose and image noise in cardiac CT. *Medical Physics*, 40(12), 121905.
- Hounsfield, G. N. (1973). Computerized transverse axial scanning (tomography): Part 1. Description of system. *The British journal of radiology*, 46(552), 1016-1022.
- Hounsfield, G. N. (1976). Historical notes on computerized axial tomography. *Journal of the Canadian Association of Radiologists*, 27(3), 135.
- Hounsfield, G. N. (1977a). Method and apparatus for measuring and analyzing radiation transmitted at plural angles. *US Patent 4,052,619*.
- Hounsfield, G. N. (1977). The EMI scanner. *Proceedings of the Royal Society of London B: Biological Sciences*, 195(1119), 281-289.
- Hounsfield, G. N. (1982). Imaging systems. *US Patent 4,322,684*.
- Huda, W. (2013). A radiation exposure index for CT. *Radiation Protection Dosimetry*, 157(2), 172–80.
- Huda, W., Scalzetti, E. M., & Levin, G. (2000). Technique Factors and Image Quality as Functions of Patient Weight at Abdominal CT 1. *Radiology*, 217,

430–435.

- Huda, W., Sterzik, A., Tipnis, S., & Schoepf, U. J. (2010). Organ doses to adult patients for chest CT. *Medical Physics*, 37(2), 842–7.
- Hurwitz, L.M., Yoshizumi, T.T., Reiman, R.E., Paulson, E.K., Frush, D.P., Nguyen, G.T., Toncheva, G.I. and Goodman, P.C. (2006). Radiation dose to the female breast from 16-MDCT body protocols. *American Journal of Roentgenology*, 186(6), 1718–1722.
- IAEA. (2004). *IAEA-TECDOC 1423 - Optimization of the radiological protection of patients undergoing radiography, fluoroscopy and computed tomography*. Vienna; IAEA
- IAEA. (2012). *Quality Assurance Programme for Computed Tomography : Diagnostic and Therapy Applications*. Vienna, IAEA.
- ICRP. (1990). Recommendations of the International Commission on Radiological Protection. *ICRP Publication 60. Ann. ICRP 21 (1-3)*.
- ICRP. (1996). Radiological Protection and Safety in Medicine. ICRP Publication 73. *Ann. ICRP 26 (2)*. Oxford.
- ICRP. (2007a). Recommendations of the International Commission on Radiological Protection. *ICRP Publication 103. Ann. ICRP 37 (2-4)*.
- ICRU. (2012). ICRU Report No. 87. Radiation Dose and Image Quality Assessment in Computed Tomography. *Journal of the ICRU*, 12(87).
- Jessen, K. A., Shrimpton, P. C., Geleijns, J., Panzer, W., & Tosi, G. (1999). Dosimetry for optimisation of patient protection in computed tomography. *Applied Radiation and Isotopes : Including Data, Instrumentation and Methods for Use in Agriculture, Industry and Medicine*, 50(1), 165–72.
- Jibiri, N. N., & Adewale, A. A. (2014). Estimation of radiation dose to the lens of eyes of patients undergoing cranial computed tomography in a teaching Hospital in Osun state, Nigeria. *International Journal Of Radiation Research*, 12(1), 53-60.
- Johansson, B., Persson, E., Westman, G., & Persliden, J. (2003). Phantom study of radiation doses outside the target volume brachytherapy versus external radiotherapy of early breast cancer. *Radiotherapy and Oncology*, 69(1), 107–112.
- Shrimpton, P. C., Jones, D. G., Hillier, M. C., Wall, B. F., Le Heron, J. C., & Faulkner, K. (1991). Survey of CT practice in the UK: Part 1-3. *Chilton, NRPB-*

R248, NRPB-R249, NRPB-R250.

- Kalender, W. A. (2006). X-ray computed tomography. *Physics in medicine and biology*, 51(13), R29.
- Kalender, W. A. (2011). *Computed tomography: fundamentals, system technology, image quality, applications*. John Wiley & Sons.
- Kalender, W. A., Buchenau, S., Deak, P., Kellermeier, M., Langner, O., van Straten, M., ... & Wilharm, S. (2008). Technical approaches to the optimisation of CT. *Physica Medica*, 24(2), 71-79.
- Kalender, W. A. (2014). Dose in x-ray computed tomography. *Physics in Medicine and Biology*, 59, R129 – R150.
- Kalender, W. A., Wolf, H., & Suess, C. (1999). Dose reduction in CT by anatomically adapted tube current modulation. II. Phantom measurements. *Medical Physics*, 26(11), 2248–53.
- Kalender, W. A., Seissler, W., Klotz, E., & Vock, P. (1990). Spiral volumetric CT with single-breath-hold technique, continuous transport, and continuous scanner rotation. *Radiology*, 176(1), 181-183.
- Kalisher, L. (1978). An Improved Needle for Localization of Nonpalpable Breast Lesions 1. *Radiology*, 128(3), 815-817.
- Kalra, M. K. M., Maher, M. M., Toth, T. T. L., Schmidt, B., Westerman, B. L., Morgan, H. T., & Saini, S. (2004). Techniques and applications of automatic tube current modulation for CT. *Radiology*, 233(3), 649–57.
- Karim, M. K. A., Hashim, S., Bradley, D. ., Bakar, K. A., Haron, M. R., & Kayun, Z. (2016). Radiation doses from computed tomography practice in Johor Bahru, Malaysia. *Radiation Physics and Chemistry*, 121, 69–74.
- Kharuzhyk, S., Matskevich, S., Filjustin, E., Bogushevich, E. V., & Ugolkova, S. (2010). Survey of computed tomography doses and establishment of national diagnostic reference levels in the Republic of Belarus. *Radiation Protection Dosimetry*, 139(1), 367–370.
- Klein, O., & Nishina, Y. (1929). Über die Streuung von Strahlung durch freie Elektronen nach der neuen relativistischen Quantendynamik von Dirac. *Zeitschrift Für Physik*, 52(11-12), 853–868.
- Kramers, H. A. (1923). XCIII. On the theory of X-ray absorption and of the continuous X-ray spectrum. *Philosophical Magazine Series 6*, 46(275), 836–871.

- Krille, L., Hammer, G. P., Merzenich, H., & Zeeb, H. (2010). Systematic review on physician's knowledge about radiation doses and radiation risks of computed tomography. *European Journal of Radiology*, 76(1), 36–41.
- Kyriakou, Y., & Kalender, W. A. (2007). X-ray scatter data for flat-panel detector CT. *Physica Medica*, 23(1), 3-15.
- Landau, L. D., & Pomeranchuk, I. I. (1953). The limits of applicability of the theory of Bremsstrahlung by electrons and of the creation of pairs at large energies. In *Dokl. Akad. Nauk SSSR* (Vol. 92, p. 535).
- Laqmani, A., Regier, M., Veldhoen, S., Backhaus, A., Wassenberg, F., Sehner, S., Groth, M., Nagel, H.D., Adam, G. and Henes, F.O. (2014). Improved image quality and low radiation dose with hybrid iterative reconstruction with 80 kV CT pulmonary angiography. *European Journal of Radiology*, 83(10), 1962–9.
- Lee, C. I., Haims, A. H., Monico, E. P., Brink, J. A., & Forman, H. P. (2004). Diagnostic CT Scans: Assessment of Patient, Physician, and Radiologist Awareness of Radiation Dose and Possible Risks 1. *Radiology*, 231(2), 393-398.
- Lee, C., Lodwick, D., Hurtado, J., Pafundi, D., Williams, J. L., & Bolch, W. E. (2009). The UF family of reference hybrid phantoms for computational radiation dosimetry. *Physics in medicine and biology*, 55(2), 339.
- Lee, T.-Y., & Chhem, R. K. (2010). Impact of new technologies on dose reduction in CT. *European Journal of Radiology*, 76(1), 28–35.
- Lell, M.M., Hinkmann, F., Nkenke, E., Schmidt, B., Seidensticker, P., Kalender, W.A., Uder, M. and Achenbach, S (2010). Dual energy CTA of the supraaortic arteries: technical improvements with a novel dual source CT system. *European Journal of Radiology*, 76(2), e6–12.
- Lewis, M. (2005). Radiation dose issues in multi-slice CT scanning. *ImPACT technology update*, 3(1).
- Li, X., Samei, E., Segars, W. P., Sturgeon, G. M., Colsher, J. G., Toncheva, G., ... Frush, D. P. (2011). Patient-specific radiation dose and cancer risk estimation in CT: part II. Application to patients. *Medical Physics*, 38(1), 408–19.
- Li, X., Segars, W. P., & Samei, E. (2014). The impact on CT dose of the variability in tube current modulation technology: a theoretical investigation. *Physics in Medicine and Biology*, 59(16), 4525–48.
- Litmanovich, D., Tack, D., Lin, P. J. P., Boiselle, P. M., Raptopoulos, V., & Bankier,

- A. a. (2011). Female breast, lung, and pelvic organ radiation from dose-reduced 64-MDCT thoracic examination protocols: A phantom study. *American Journal of Roentgenology*, 197(4), 929–934. <http://doi.org/10.2214/AJR.10.6401>
- Ludlow, J. B., & Walker, C. (2013). Assessment of phantom dosimetry and image quality of i-CAT FLX cone-beam computed tomography. *American Journal of Orthodontics and Dentofacial Orthopedics*. 144(6), 802–17.
- Andrade, M. E. A., Borrás, C., Khoury, H. J., Dias, S. K., & Barros, V. S. M. (2012). Organ doses and risks of computed tomography examinations in Recife, Brazil. *Journal of Radiological Protection*, 32(3), 251.
- Berger, M.J., Hubbell, J.H., Seltzer, S.M., Chang, J., Coursey, J.S., Sukumar, R., Zucker, D.S. and Olsen, K. (1998). XCOM: photon cross sections database. *NIST Standard reference database*, 8(1), 3587-3597.
- McNitt-Gray, M. F., Cagnon, C. H., Solberg, T. D., & Chetty, I. (1999). Radiation dose in spiral CT: the relative effects of collimation and pitch. *Medical physics*, 26(3), 409-414.
- McVey, G., & Weatherburn, H. (2004). A study of scatter in diagnostic X-ray rooms. *The British Journal of Radiology*, 77(913), 28–38.
- Menzel, H.-G., Clement, C., & DeLuca, P. (2009). ICRP Publication 110. Realistic reference phantoms: an ICRP/ICRU joint effort. A report of adult reference computational phantoms. *Annals of the ICRP*, 39(2), 1–164.
- Ministry of Health Malaysia. (2013). *Guidelines in Malaysia Diagnostic Reference Levels in Medical Imaging (Radiology)*. Putrajaya.
- Ministry of Health Malaysia. (2013). *Malaysian Statistics On Medical Devices* (Vol. 27). Putrajaya.
- Mori, S., Ko, S., Ishii, T., & Nishizawa, K. (2009). Effective doses in four-dimensional computed tomography for lung radiotherapy planning. *Medical Dosimetry : Official Journal of the American Association of Medical Dosimetrists*, 34(1), 87–90.
- Muhogora, W. E., Nyanda, A. M., Ngoye, W. M., & Shao, D. (2006). Radiation doses to patients during selected CT procedures at four hospitals in Tanzania. *European Journal of Radiology*, 57, 461–467.
- Murphy, K.P., Crush, L., O'Neill, S.B., Foody, J., Breen, M., Brady, A., Kelly, P.J., Power, D.G., Sweeney, P., Bye, J. and O'Connor, O.J (2016). Feasibility of low-dose CT with model-based iterative image reconstruction in follow-up of

- patients with testicular cancer. *European Journal of Radiology Open*, 3, 38–45.
- Nagel, H. D. (2004). Radiation dose issues with MSCT. In *Multislice CT* (pp. 17-26). Springer Berlin Heidelberg.
- Nagel, H. D. (2007). CT Parameters that Influence the Radiation Dose. In D. Tack & P. Gevenois (1st Eds.), *Radiation Dose from Adult and Pediatric Multidetector Computed Tomography SE - 4* (pp. 51–79). Berlin: Springer Berlin Heidelberg.
- Nagel, H. D., & Huda, W. (2002). Radiation exposure in computed tomography. *Medical Physics*, 29(8), 1922-1922.
- National Academy of Sciences. (2006). *BEIR VII Health Risks from Exposure to Low Levels of Ionizing Radiation*. National Academic Press, New York.
- Naumann, D. N., Raven, D., Pallan, A., & Bowley, D. M. (2014). Radiation exposure during paediatric emergency CT: time we took notice? *Journal of Pediatric Surgery*, 49(2), 305–7.
- Nawfel, R. D., Judy, P. F., Schleipman, A. R., & Silverman, S. G. (2004). Patient radiation dose at CT urography and conventional urography. *Radiology*, 30(4), 343–344.
- O'Daniel, J. C., Stevens, D. M., & Cody, D. D. (2005). Reducing radiation exposure from survey CT scans. *AJR. American Journal of Roentgenology*, 185, 509–515.
- Oikarinen, H., Meriläinen, S., Pääkkö, E., Karttunen, A., Nieminen, M. T., & Tervonen, O. (2009). Unjustified CT examinations in young patients. *European Radiology*, 19(5), 1161–5.
- Olowookere, C. J., Obed, R. I., Babalola, I. A., & Bello, T. O. (2011). Radiography Patient dosimetry during chest , abdomen , skull and neck radiography in SW Nigeria. *Radiography*, 17(3), 245–249.
- Origgi, D., Vigorito, S., Villa, G., Bellomi, M., & Tosi, G. (2006). Survey of computed tomography techniques and absorbed dose in Italian hospitals: a comparison between two methods to estimate the dose-length product and the effective dose and to verify fulfilment of the diagnostic reference levels. *European Radiology*, 16(1), 227–37.
- Ornová, D., Šemnická, J., Spěvák, V., & Konček, O. (2011). Polymer gel dosimetry using computed tomography. *Nuclear Instruments and Methods in Physics Research Section A: Accelerators, Spectrometers, Detectors and Associated Equipment*, 652(1), 806–809.
- Pantos, I., Thalassinou, S., Argentos, S., Kelekis, N. L., Panayiotakis, G., &

- Efstathopoulos, E. P. (2011). Adult patient radiation doses from non-cardiac CT examinations: a review of published results. *The British Journal of Radiology*, 84(1000), 293–303.
- Parker, M. S., Chung, J. K., Fatouros, P. P., Hoots, J. a., Kelleher, N. M., & Benedict, S. H. (2006). Reduction of radiation dose to the female breast: Preliminary data with a custom-designed tungsten-antimony composite breast shield. *Journal of Applied Research*, 6(3), 230–239.
- Paul, J., Banckwitz, R., Krauss, B., Vogl, T. J., Maentele, W., & Bauer, R. W. (2012). Estimation and comparison of effective dose (E) in standard chest CT by organ dose measurements and dose-length-product methods and assessment of the influence of CT tube potential (energy dependency) on effective dose in a dual-source CT. *European Journal of Radiology*, 81(4), e507–12.
- Pauwels, R., Beinsberger, J., Collaert, B., Theodorakou, C., Rogers, J., Walker, A., Cockmartin, L., Bosmans, H., Jacobs, R., Bogaerts, R. and Horner, K. (2012). Effective dose range for dental cone beam computed tomography scanners. *European Journal of Radiology*, 81(2), 267–71.
- Payne, J. T. (2005). CT radiation dose and image quality. *Radiologic Clinics of North America*, 43(6), 953–62.
- Pierce, D. A., & Preston, D. L. (2000). Radiation-related cancer risks at low doses among atomic bomb survivors. *Radiation research*, 154(2), 178-186.
- Podberesky, D.J., Angel, E., Yoshizumi, T.T., Toncheva, G., Salisbury, S.R., Brody, A.S., Alsip, C., Barelli, A., Egelhoff, J.C., Anderson-Evans, C. and Nguyen, G.B. (2013). Comparison of radiation dose estimates and scan performance in pediatric high-resolution thoracic CT for volumetric 320-detector row, helical 64-detector row, and noncontiguous axial scan acquisitions. *Academic Radiology*, 20(9), 1152–61.
- Polacin, A., Kalender, W. A., & Marchal, G. (1992). Evaluation of section sensitivity profiles and image noise in spiral CT. *Radiology*, 185(1), 29-35.
- Preston, D.L., Ron, E., Tokuoka, S., Funamoto, S., Nishi, N., Soda, M., Mabuchi, K. and Kodama, K. (2007). Solid cancer incidence in atomic bomb survivors: 1958-1998. *Radiation research*, 168(1), 1-64.
- Rehani, M. M. (2012). ICRP and IAEA actions on radiation protection in computed tomography. *Annals of the ICRP*, 41(3-4), 154–60.
- Rehani, M.M., Ciraj-Bjelac, O., Al-Naemi, H.M., Al-Suwaidi, J.S., El-Nachef, L.,

- Khosravi, H.R., Kharita, M.H., Muthuvelu, P., Pallewatte, A.S., San Juan, B.C. and Shaaban, M. (2012). Radiation protection of patients in diagnostic and interventional radiology in Asian countries: impact of an IAEA project. *European Journal of Radiology*, 81(10), e982–9.
- Sabarudin, A., Mustafa, Z., Nassir, K. M., Hamid, H. A., & Sun, Z. (2015). Radiation dose reduction in thoracic and abdomen – pelvic CT using tube current modulation : a phantom study. *Journal of Applied Clinical Medical Physics*, 16(1), 319–328.
- Sabarudin, A., Sun, Z., & Ng, K.-H. (2012). A systematic review of radiation dose associated with different generations of multidetector CT coronary angiography. *Journal of Medical Imaging and Radiation Oncology*, 56(1), 5–17.
- Samei, E., Ranger, N. T., MacKenzie, A., Honey, I. D., Dobbins, J. T., & Ravin, C. E. (2008). Detector or System? Extending the Concept of Detective Quantum Efficiency to Characterize the Performance of Digital Radiographic Imaging Systems. *Radiology*, 249(3), 926–937.
- Schindera, S.T., Diedrichsen, L., Müller, H.C., Rusch, O., Marin, D., Schmidt, B., Raupach, R., Vock, P. and Szucs-Farkas, Z. (2011). Iterative Reconstruction Algorithm for Abdominal Multidetector CT at Different Tube Voltages: Assessment of Diagnostic Accuracy, Image Quality, and Radiation Dose in a Phantom Study. *Radiology*, 260(2), 454–462.
- Schindera, S.T., Tock, I., Marin, D., Nelson, R.C., Raupach, R., Hagemester, M., von Allmen, G., Vock, P. and Szucs-Farkas, Z. (2010). Effect of Beam Hardening on Arterial Enhancement in Thoracoabdominal CT Angiography with Increasing Patient Size: An in Vitro and in Vivo Study. *Radiology*, 256(2), 528–535.
- Schmidt, R., Wulff, J., & Zink, K. (2015). GMctdospp: Description and validation of a CT dose calculation system. *Medical Physics*, 42(7), 4260–70.
- Seidenbusch, M. C., Harder, D., Regulla, D. F., & Schneider, K. (2014). Conversion factors for determining organ doses received by paediatric patients in high-resolution single slice computed tomography with narrow collimation. *Zeitschrift Fur Medizinische Physik*, 24(2), 123–137.
- Seoung, Y. H. (2015). Evaluation of Radiation Dose Reduction during CT Scans Using Oxide Bismuth and Nano-Barium Sulfate Shields. *arXiv preprint arXiv:1503.03702*.

- Shepp, L. A., Hilal, S. K., & Schulz, R. A. (1979). The tuning fork artifact in computerized tomography. *Computer Graphics and Image Processing*, *10*(3), 246-255.
- Shope, T. B., Morgan, T. J., Showalter, C. K., Pentlow, K. S., Rothenberg, L. N., White, D. R., & Speller, R. D. (1982). Radiation dosimetry survey of computed tomography systems from ten manufacturers. *The British Journal of Radiology*, *55*(649), 60–9.
- Shrimpton, P. C., Hillier, M. C., Lewis, M. A., & Dunn, M. (2006). National survey of doses from CT in the UK: 2003. *The British Journal of Radiology*, *79*, 968–980.
- Siegel, C. (2005). Patient radiation dose at CT urography and conventional urography. *The Journal of Urology*, *173*(3), 923–4.
- Skrzyński, W. (2014). Measurement-based model of a wide-bore CT scanner for Monte Carlo dosimetric calculations with GMCTdospp software. *Physica Medica*. *30*(7), 816–821.
- Smith-Bindman, R., Lipson, J., Marcus, R., Kim, K.P., Mahesh, M., Gould, R., de González, A.B. and Miglioretti, D.L. (2009). Radiation dose associated with common computed tomography examinations and the associated lifetime attributable risk of cancer. *Archives of Internal Medicine*, *169*(22), 2078–86.
- Sokolovskaya, E., & Shinde, T. (2016). Comparison of utilization rate of CT scans of the abdomen and pelvis in patients with elevated BMI compared to patients with normal BMI presenting to the ER with gastrointestinal symptoms. *Radiography*, *22*(1), 21–24.
- Sookpeng, S., Martin, C. J., & Gentle, D. J. (2013). Comparison of different phantom designs for CT scanner automatic tube current modulation system tests. *Journal of Radiological Protection*. *33*(4), 735–61.
- Stamm, G., & Nagel, H. D. (2002). [CT-expo--a novel program for dose evaluation in CT]. *RöFo : Fortschritte Auf Dem Gebiete Der Röntgenstrahlen Und Der Nuklearmedizin*, *174*(12), 1570–6.
- Suess, C., & Chen, X. (2002). Dose optimization in pediatric CT: current technology and future innovations. *Pediatric radiology*, *32*(10), 729-734.
- Suliman, I. I., Abdalla, S. E., Ahmed, N. A., Galal, M. A., & Salih, I. (2011). Survey of computed tomography technique and radiation dose in Sudanese hospitals. *European Journal of Radiology*, *80*(3), e544–51.

- Szczykutowicz, T. P., & Mistretta, C. A. (2013). Design of a digital beam attenuation system for computed tomography: part I. System design and simulation framework. *Medical Physics*, *40*(2), 021905.
- Tabary, J., Marache-Francisco, S., Valette, S., Segars, W. P., & Lartizien, C. (2009). Realistic X-ray CT simulation of the XCAT phantom with SINDBAD. In *2009 IEEE Nuclear Science Symposium Conference Record (NSS/MIC)* (pp. 3980–3983).
- Tack, D. (2010). Radiation dose optimization in thoracic imaging. *Journal of the Belgian Society of Radiology*, *93*(1), 15–19.
- Tack, D., Kalra, M., & Gevenois, P. (2012). *Radiation Dose from Multidetector CT*. Berlin, Germany: Springer.
- Taylor, S., Van Muylem, A., Howarth, N., Gevenois, P. A., & Tack, D. (2016). CT dose survey in adults: what sample size for what precision?. *European radiology*, 1-9.
- Tian, X., Li, X., Segars, W. P., Frush, D. P., Paulson, E. K., & Samei, E. (2013). Dose coefficients in pediatric and adult abdominopelvic CT based on 100 patient models. *Physics in Medicine and Biology*, *58*(24), 8755–68.
- Tsai, Y. S. (1974). Pair production and bremsstrahlung of charged leptons. *Reviews of Modern Physics*, *46*(4), 815.
- Tsalafoutas, I. a, Georgolopoulou, P., & Abatzoglou, I. (2012). CT dosimetry considerations in non typical conditions: the effect of scan field of view and table height selection. *Physica Medica*, *28*(1), 83–90.
<http://doi.org/10.1016/j.ejmp.2011.03.002>
- Tsapaki, V., Rehani, M., & Saini, S. (2010). Radiation safety in abdominal computed tomography. *Seminars in Ultrasound, CT, and MR*, *31*(1), 29–38.
- UNSCEAR. (2010). Report of the United Nations Scientific Committee on the Effects of Atomic Radiation. *United Nations Assembly in 2011, New York*.
- Valentin, J. (2002a). Basic anatomical and physiological data for use in radiological protection: reference values. *Annals of the ICRP*, *32*(3-4), 1–277.
- Valentin, J. (2002b). Basic anatomical and physiological data for use in radiological protection: reference values. *Annals of the ICRP*, *32*(3-4), 1–277.
- Valentin, J. (2007). Managing Patient Dose in Multi-Detector Computed Tomography (MDCT). *Annals of the ICRP Publication 102*.
- van der Molen, A. J., & Geleijns, J. (2007). Overranging in Multisection CT:

- Quantification and Relative Contribution to Dose—Comparison of Four 16-Section CT Scanners. *Radiology*, 242(1), 208–216.
- Vañó, E., Cosset, J. M., & Rehani, M. M. (2012). Radiological protection in medicine: work of ICRP Committee 3. *Annals of the ICRP*, 41(3-4), 24–31.
- Verdun, F. R. (2008). CT radiation dose in children : a survey to establish age-based diagnostic reference levels in Switzerland. *European Radiology*, 18, 1980–1986.
- Leitz, W., Axelsson, B., & Szendrö, G. (1995). Computed tomography dose assessment—a practical approach. *Radiation Protection Dosimetry*, 57(1-4), 377-380.
- Wang, J., Duan, X., Christner, J. A., Leng, S., Yu, L., & McCollough, C. H. (2011). Radiation dose reduction to the breast in thoracic CT: comparison of bismuth shielding, organ-based tube current modulation, and use of a globally decreased tube current. *Medical Physics*, 38(11), 6084–92.
- Westra, S. J., Li, X., Gulati, K., Singh, S., Liu, B., Kalra, M. K., & Abbara, S. (2014). Entrance skin dosimetry and size-specific dose estimate from pediatric chest CTA. *Journal of Cardiovascular Computed Tomography*, 8(2), 97–107.
- www.impactscan.org. ImpACT. Retrieved from <http://www.scribd.com/doc/101314520/Manual-CT-7800TX#scribd>
- Xu, X. G. (2014). An exponential growth of computational phantom research in radiation protection, imaging, and radiotherapy: a review of the fifty-year history. *Physics in Medicine and Biology*, 59(18), R233–R302.
- Zainal Ariffin, O., & Nor Saleha, I. T. (2011). National cancer registry report 2007. *Malaysia: Ministry of Health*.
- Zhang, Y. (2012). CT Radiation Dosimetry Study Using Monte Carlo Simulation and Computational Anthropomorphic Phantoms. Doctorate dissertation, Duke University.