

Absolute homogeneity assessment of precipitation time series in an arid region of Pakistan

Kamal AHMED^{1,2*}, Shamsuddin SHAHID¹, Tarmizi ISMAIL¹, Nadeem NAWAZ² and Xiao-Jun WANG^{3,4}

¹ Faculty of Civil Engineering, Universiti Teknologi Malaysia (UTM), 81310 Johor Bahru, Malaysia

² Faculty of Water Resource Management, Lasbela University of Agriculture, Water and Marine Sciences, Uthal, Balochistan, Pakistan

³ State Key Laboratory of Hydrology-Water Resources and Hydraulic Engineering, Nanjing Hydraulic Research Institute, Nanjing, China, 210029

⁴ Research Center for Climate Change, Ministry of Water Resources, Nanjing, China, 210029

*Corresponding author; email: kamal_brc@hotmail.com

Received: October 5, 2016; accepted: May 22, 2018

RESUMEN

Las evaluaciones de homogeneidad se realizan por lo general mediante datos de precipitación total anual, que a menudo fallan en la detección de homogeneidad en la precipitación estacional. Más aún, es necesario valorar la homogeneidad utilizando varios métodos, ya que el desempeño del método para probar la homogeneidad depende de la distribución de los datos. Esto es particularmente importante en regiones áridas, donde la distribución de la precipitación anual y estacional a menudo no son normales. En este estudio se evaluó la homogeneidad de conjuntos de datos de precipitación mensual y anual de 14 estaciones meteorológicas ubicadas en la región árida de Paquistán, utilizando para ello las pruebas bayesiana, de Pettitt, de homogeneidad normal estándar (SNHT, por sus siglas en inglés), de desviación acumulativa, de proporcionalidad de von Neumann, de verosimilitud de proporciones de Worsley y *t* de Student a un nivel de confianza de 95%. Las series de precipitación se clasificaron en tres clases, a saber “útiles”, “dudosas” y “sospechosas”, con base en los resultados de diferentes pruebas de homogeneidad. Los resultados sugieren que las series de tiempo de precipitación para la mayoría de los meses en todas las estaciones son útiles. Las series de tiempo de precipitación resultan dudosas para junio en dos estaciones y para abril en una estación; también se sospecha que sean dudosas para noviembre en otra estación. Por otra parte, se encontró que las series anuales son útiles en 12 estaciones y sospechosas en otras dos. La comparación de diferentes pruebas de homogeneidad reveló que las pruebas SNHT y Worsley son más sensibles, en tanto que la prueba de desviación acumulativa es la menos sensible a los cambios en los datos de precipitación mensual. En el caso de la precipitación anual, se encontró que la prueba de von Neumann es más sensible en comparación con las otras.

ABSTRACT

Homogeneity evaluations are usually performed on the total annual precipitation data, which often fails to detect non-homogeneity in seasonal precipitation. Furthermore, it is required to assess homogeneity using multiple methods as the performance of homogeneity testing methods depend on the distribution of the data. This is particularly important for the arid region where distributions of seasonal and annual rainfall are often non-normal. The homogeneity of annual and monthly precipitation datasets of 14 meteorological stations located in the arid region of Pakistan was assessed in this study using the Pettitt's test, the standard normal homogeneity test (SNHT), the cumulative deviation test, the von Neumann's ratio test, the Bayesian test, the Worsley's likelihood ratio test, and Student's *t*-test at a 95% confidence level. The rainfall series were categorized into three classes, namely “useful”, “doubtful” and “suspect” based on the results of different homogeneity tests. Results suggest that rainfall time series for most of the months in all the stations are

useful. The rainfall time series are found doubtful for the month of June at two stations, for April at one station, and suspect for November at only one station. On the other hand, the annual series were found useful at 12 stations and suspect at two stations. Comparison of different homogeneity tests revealed that SNHT and Worsley's tests are the most sensitive, and cumulative deviation test is the least sensitive to changes in monthly precipitation data. In the case of annual series, the von Neumann's test was found most sensitive compared to other tests.

Keywords: Absolute homogeneity, precipitation, hypothesis test, arid region, Balochistan.

1. Introduction

Precipitation is the foremost component of the global hydrological cycle, which has enormous influence on the socioeconomic development of any region (Bates et al., 2008; Trenberth, 2011). Long-term homogeneous precipitation data are essential for the assessment of hydro-climatic conditions of a region (Beaulieu et al., 2009; Li-Juan and Zhong-Wei, 2012). In practice, various non-climatic factors cause inhomogeneity in observed data and result in unrealistic trends, jumps and shifts in time series (Costa and Soares, 2009; Morozova and Valente, 2012; Domonkos, 2014). The factors that cause non-homogeneity in rainfall time series include relocation of recording station, changes in instrumentation, changes in the surroundings, malfunctioning or inaccuracy of instrumental, and changes in observation or calculation procedures (Wijngaard et al., 2003; Auer et al., 2005; Menne et al., 2009; Domonkos, 2014). Since these non-climatic phenomena usually happen during the long-period of data collection, it is essential to test the homogeneity of recorded rainfall data series prior to their use in any hydro-meteorological studies (Firat et al., 2010; Santos and Frago, 2013).

Several methods have been developed and applied for the assessment of homogeneity in time series data (Peterson et al., 1998; Li-Juan and Zhong-Wei, 2012; Yozgatligil and Yazici, 2015); these are mainly divided into two groups, namely relative and absolute methods. Relative methods are more reliable and recommended as the test is conducted by correlating the test data series with the homogeneous data series of a neighboring station. On the other hand, when homogeneous data series is not available or if the correlation between test series and reference series suggest a weak association, absolute methods are preferred (Tayanç et al., 1998; Wijngaard et al., 2003; Tsidu, 2012). Therefore, the selection of absolute

tests depends on the availability of homogeneous data series as well as information about climatic or topographic conditions of a region.

Rainfall in arid regions is very erratic and sparse; therefore, it varies widely over a short distance. Furthermore, rainfall stations are usually sparsely located in most of the arid regions in the world due to less human settlements (Tatli, 2015). Hence, it is often hard to find homogeneous rainfall time series in the neighboring areas (Machiwal and Jha, 2008). For this reason, absolute methods are suggested for homogeneity tests in this kind of regions. In the present study, absolute methods are used to assess the homogeneity of rainfall time series recorded in an arid region.

Owing to the existence of various absolute tests, it is always difficult to identify the best method for a particular study area. The applicability of statistical methods highly depends on the properties of the target climatic variable and the temporal structure of the observational record (Domonkos, 2014). Therefore, it is always recommended to use multiple methods to verify the homogeneity in a time series. Among the absolute methods available to assess homogeneity, one or a combination of a few methods are most widely used and often suggested, namely the Pettitt's test (Pettitt, 1979), the standard normal homogeneity test (SNHT) (Alexandersson, 1986), the cumulative deviations test (Craddock, 1979), the von Neumann's ratio test (von Neumann, 1941), the Bayesian test (Chernoff and Zacks, 1964), the Worsley's likelihood ratio test (Worsley, 1979), and Student's *t*-test (Panofsky and Brier, 1958) at a 95% confidence level. In recent years, different combinations of these tests have been used to assess the homogeneity of rainfall data in different climatic regions (de Lima et al., 2010; Sahin and Cigizoglu, 2010; Toreti et al., 2011; Kang and Yusof, 2012; Reiter et al., 2012; Santos and Frago, 2013).

Che Ros et al. (2016) and Firat et al. (2010) reported that there could be several reasons for the inhomogeneity in data. Nevertheless, the choice of a method for detection of inhomogeneity can be a prime reason. It has been also reported that different tests often give contradictory result as their theoretical background are based on different assumptions. Additionally, the application of several methods does not guarantee the robustness of analysis; however, it gives more confidence in the selection of data. Therefore, several authors (e.g., Firat et al., 2010; Wijngaard et al., 2003) combined different methods for the detection of inhomogeneities and reported that the combination of several statistical tests can better detect the inhomogeneities and provide better decision on the selection or rejection of data series.

Guidelines for taking appropriate decisions based on the obtained results from different tests are still not available. An improper decision may include an inhomogeneous data series or exclude a homogeneous data series from the analysis, which in turn may cause inappropriate measures of hydrometeorological condition. In recent years, the approach proposed by Wijngaard et al. (2003) has been used to decide on data homogeneity based on the results of multiple homogeneity testing. Wijngaard et al. (2003) categorized the results of four tests into three classes, namely useful, doubtful and suspect depending on the number of tests that reject the null hypothesis of data homogeneity. The major drawback of this approach is that it only considers four methods to decide on the homogeneity of the dataset. Recently, many other methods have been found more reliable for homogeneity assessment. This emphasizes the need of using more than four methods and making decisions based on the obtained results.

The objective of the present study is to categorize the homogeneity of monthly and annual rainfall data series recorded in the arid region of Pakistan based on the results of the most widely used absolute homogeneity tests. The homogeneity of rainfall records from 14 meteorological stations for the time period 1961-2009 were assessed using the seven aforementioned tests, using the approach proposed by Wijngaard et al. (2003) to categorize the homogeneity of rainfall series based on the tests results. Finally, breaks in time series were also assessed to recognize changes

in non-homogeneous data. It is expected that the methodology presented in this study will provide insight for assessing homogeneity in a robust manner. The proposed approach can be replicated in any other climatic region for reliable assessment of data homogeneity.

The rest of this paper is structured as follows: Section 2 describes the general features and the climate of the study area, as well as the dataset used in the study; Section 3 describes the methodology used for homogeneity assessment; Section 4 discusses the results; finally, Section 5 gives the conclusions based on the obtained results.

2. Study area

The arid region of Pakistan is mostly located in the province of Balochistan, between 25°-32° N, 61° to 70.5° E. The location of Balochistan on the map of Pakistan is shown in Figure 1a. Physically, it is an extensive plateau of rough terrain divided into basins by ranges of sufficient heights and ruggedness. Geographically, it is divided into four distinct zones: upper highlands, lower highlands, plains, and deserts. The topography of the study area, shown in Figure 1b, reveals a large variation over a short distance. The high variability in topography strongly influences the climate. Mountains primarily dominate the terrain in the region. The climates of the province are hyper-arid, arid, and semi-arid as shown in Figure 2a. The rainfall in the region is scanty and unevenly distributed. The spatial distribution of mean annual rainfall in the study area is shown in Figure 2b. Rainfall in the area varies from 37 mm in the southwest desert to 397 mm in the northeast, and its amount varies over time and space in different seasons (Ahmed et al., 2014).

Monsoon winds and the western depression are the main sources of rainfall during summer and winter, respectively, in the area. About 58% of total rainfall in the area occurs during winter caused by western depression. On the other hand, 31% of the total rainfall occurs during monsoon. Winter rainfall (December to March) is caused by western depressions that originate in the Mediterranean Sea. On the other hand, monsoon winds bring moist air from the Bay of Bengal during the months of June to September (Hussain and Lee, 2014; Ahmed et al., 2017). The monsoon wind enters the area from

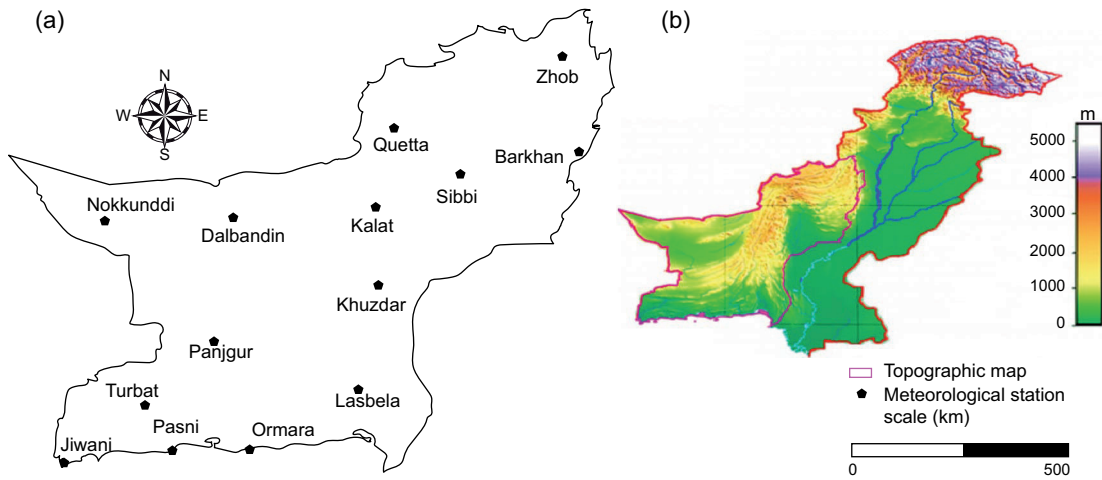


Fig. 1. (a) Location of rainfall stations in the province of Balochistan, Pakistan, and (b) topography of the area.

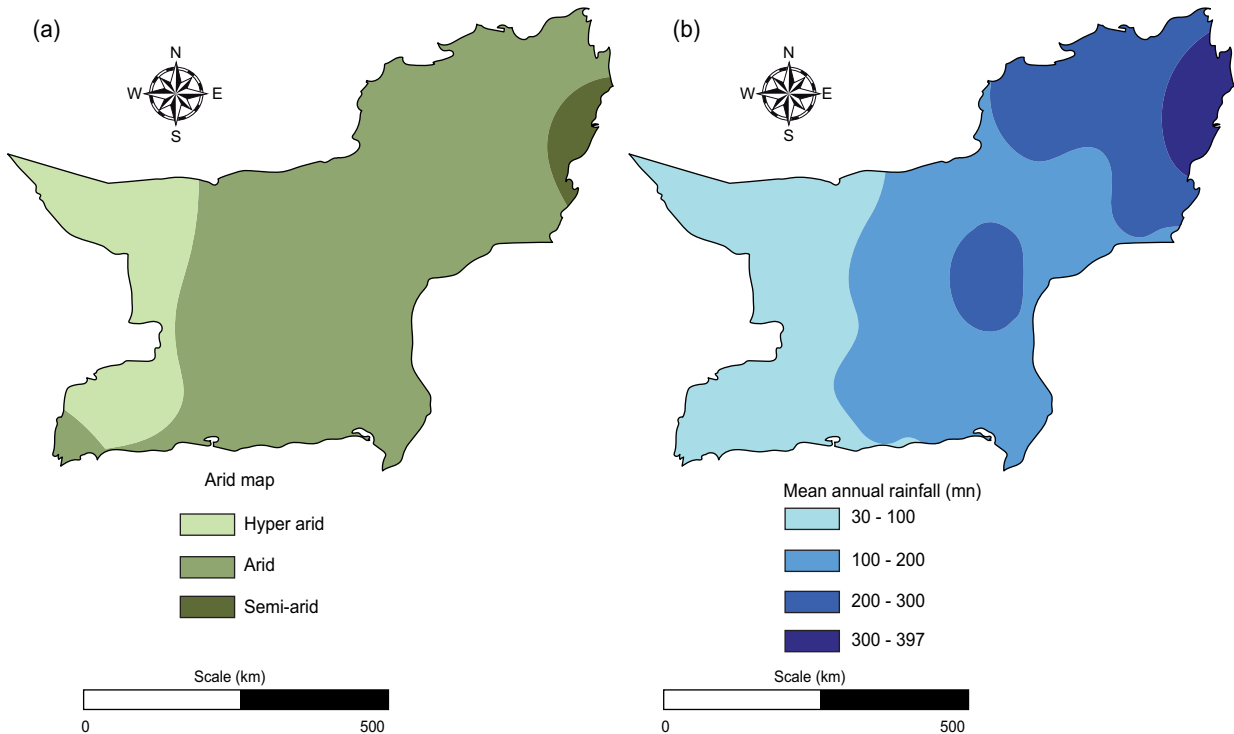


Fig. 2. (a) Aridity map, and (b) mean annual rainfall of the study area (adapted from Ahmed et al., 2014).

the southeast corner of the province; therefore, the southeastern part of the province receives more rainfall during the monsoon. As the monsoon progresses through the land, air moisture content reduces, and the amount of monsoon rainfall gradually decreases from the east to the west.

The major challenge of hydrological studies in the province is missing rainfall data, whose percentage in the study area was found to vary between 0 and 8.94% (Table I). The missing values were filled using the expectation-maximization (EM) method. The EM algorithm iteratively computes the maximum

Table I. Percentage of missing data at different stations during the period 1961–2009.

Station	Missing data (%)
Barkhan	1.22
Dalbandin	0.00
Jiwani	0.41
Kalat	8.94
Khuzdar	0.20
Lasbela	0.00
Nokkundi	0.81
Ormara	3.13
Panjugur	0.20
Pasni	7.93
Quetta	0.00
Sibbi	2.64
Turbat	2.44
Zhob	0.00

likelihood estimates to increase the relationship between the missing value and the unknown parameters of a data model. It computes the missing values using two main steps: conditional expectation (E-step) and maximization (M-step). The E-step attempts to create a function for the expectation of the log-likelihood, evaluated using the current estimate for the best-fit model parameters. The M-step computes parameters maximizing the expected log-likelihood found on the E-step. These parameter-estimates are then used to determine the distribution of the latent variables in the next E-step. The parameters are then re-estimated, and the process is repeated until convergence (Ng and McLachlan, 2004). A full description of the EM algorithm can be found in McLachlan and Krishnan (1997). EM has been widely used in recent years for computation of missing rainfall data (Firat et al., 2010; Tsidu 2012; Alamgir et al., 2015).

Climate change is expected to have a strong impact on Pakistan's precipitation. Climate projections indicate that average temperature in the country will rise 1.1 to 6.4 °C by the end of the current century (Syed et al., 2014). The arid region is considered the most vulnerable area of Pakistan to climate change. It has been projected that droughts and water scarcity will continuously increase in the area throughout the 21st century, which will severely affect the economy and livelihood of people if adaptation measures are not taken (Ahmed et al., 2015, 2016). It is necessary

to model and analyze meteorological variables (i.e., rainfall, temperature, evaporation, etc.) for the better understanding of climate and its changes. Thus, homogeneity assessment of rainfall data in the region is very urgent.

3. Methodology

The study was conducted in two broad steps. In the first step, the rainfall data collected from each station was arranged in time series (1961–2009). Later, a code was developed in the R program to separate monthly rainfall data from the rainfall time series. Each time series contains 49 values representing the rainfall of one month for the years 1961–2009. The tests were applied separately on each calendar month for each station (one station × seven tests × 12 months). Homogeneity was assessed at a 95% confidence level with null hypothesis (H_0 , data are homogeneous), and alternative hypothesis (H_a , data are non-homogeneous). In the second step, data were classified into three classes, namely A, B, and C according to the number of tests which accepted the null hypothesis. The methods used in this study are discussed below.

3.1. Homogeneity tests

3.1.1 Pettitt's test

The Pettitt's test (Pettitt, 1979) is a nonparametric test adapted from the rank-based Mann-Whitney test that allows identifying the point at which the shift occurs in a time series. The break is detected near the year m , when the estimated value (X_E) exceeds the critical value:

$$X_E = \max_{1 \leq d \leq n} |X_d| \quad (1)$$

Where X_d is the Mann-Whitney statistic and can be calculated as $X_d = 2 \sum_{i=1}^d r_i - d(n+1)$ $d = 1, 2, 3, 4, \dots, n$, n is the number of years, and r_i the rank of the i_{th} observation. The critical value of Pettitt's statistics at a 95% confidence level for number of data point ($n=49$) is 235.

3.1.2 Standard normal homogeneity test (SNHT)

The SNHT (Alexandersson, 1986) is a likelihood ratio test widely used to detect non-homogeneities in a time series. The test identifies the breaks at the

beginning and end of the time series. The test statistic is used to compare the mean of the first n observations with the mean of the remaining $(n - d)$ observations with n data points:

$$T_d = d z_1^{-2} + (n - d) z_2^{-2} \quad d=1, 2, 3, 4, \dots, n \quad (2)$$

where

$$\bar{z}_1 = \frac{1}{d} \sum_{i=1}^d (Y - \bar{Y}) / s \quad (3)$$

$$\bar{z}_2 = \frac{1}{n - d} \sum_{i=d+1}^n (Y - \bar{Y}) / s \quad (4)$$

where Y is the observed value, \bar{Y}_i is the mean and s is the standard deviation of the series. A high T_d value in a year d implies that a break occurred in that year. The SNHT statistic T_0 is defined as:

$$T_0 = \max_{1 \leq d \leq n} T(d) \quad (5)$$

The critical value of the SNHT statistics at a 95% confidence level is 8.45 for $n = 49$ (Alexandersson and Moberg, 1997).

3.1.3 Cumulative deviations test

The cumulative deviations test is based on the adjusted partial sums or cumulative deviations from the mean (Buishand, 1982):

$$S_k^* = \sum_{i=1}^k (x_i - \bar{x}), \quad k=1, 2, 3, 4, \dots, n \quad (6)$$

where S_k^* are the cumulative deviations, x_i is the observed value, \bar{x} is the sample mean, and n is the number of records in the time series. The rescaled adjusted partial sums (S_k^{**}) are obtained as:

$$S_k^{**} = \frac{S_k^*}{D_x}, \quad k=1, 2, 3, 4 \dots n \quad (7)$$

where the standard deviation D_x can be calculated as:

$$D_x = \frac{1}{n} \sum_{i=1}^n (x_i - \bar{x})^2 \quad (8)$$

The cumulative deviations test statistic (Q) is estimated as:

$$Q = \max_k |S_k^{**}|, \quad 0 \leq k \leq n. \quad (9)$$

The maximum value of Q indicates non-homogeneity. The critical value for the test at a 95% confidence level is 1.27 for $n = 49$.

3.1.4 Von Neumann's ratio test

The von Neumann ratio (Von Neumann, 1941) is a non-parametric test most widely used to detect non-homogeneity in time series. The test does not give any information about the point of break but provides an estimation of the overall level of non-homogeneity in the data. It can be defined as:

$$N = \frac{\sum_{i=1}^{n-1} (x_i - x_{i+1})^2}{\sum_{i=1}^n (x_i - \bar{x})^2} \quad (10)$$

where x_i is the observed value, and \bar{x} is the sample mean with sample size n . A series is considered homogeneous if the expected value is equal to 2 and non-homogeneous if it is below 2. If the sample has rapid variations in the mean, the N value may rise above 2 for $n = 49$ at a 95% confidence interval (Bingham and Nelson, 1981).

3.1.5 Bayesian test

The Bayesian test (Chernoff and Zacks, 1964; Gardner, 1969) statistic is estimated as:

$$A = \sum_{k=1}^{n-1} (Z_k^{**})^2, \quad k=1, 2, 3, 4, \dots, n \quad (11)$$

where A is the Bayesian test statistic, and Z_k^{**} are the weighted rescaled partial sums, which can be computed using the following equation:

$$Z_k^{**} = \frac{[\{k(n-k)\}^{-0.5} S_k^*]}{D_x} \quad (12)$$

where, S_k^* is given in Eq. (6) and D_x in Eq. (8).

A large value of the Bayesian test statistic (A) indicates the departure from the homogeneity (Buishand, 1982). The critical value of the Bayesian test statistic at a 95% confidence level is 3.48 for $n = 49$.

3.1.6 Worsley likelihood ratio

The Worsley likelihood ratio is a parametric method used to detect non-homogeneity. It is similar to the cumulative deviation test, except that weights in the Worsley likelihood ratio method depend on their position in the time series. It can be calculated using

the following equation:

$$Z_k^{**} = \frac{S_k^*}{D_x} \quad (13)$$

The Worsley likelihood ratio test statistic W is estimated as:

$$W = \frac{(n-2)^{0.5} V}{(1-V^2)^{0.5}} \quad (14)$$

where n is the number of observations, and V can be calculated as:

$$V = \max |Z_k^{**}| \quad (15)$$

A data series is considered to be homogeneous when the test statistics W is equal to 3.16 for $n = 49$ at a 95% confidence level. A negative value of W indicates that the later part of the record has a higher mean than the earlier part and vice versa.

3.1.7 Student's t -test

Student's t -test (Panofsky and Brier, 1958) is a parametric test used to check the null hypothesis of equal means in two periods of a series. The following equation is used to calculate the t values:

$$t = \frac{(\bar{x} - \bar{y})}{\sqrt{s \left(\frac{1}{n} + \frac{1}{m} \right)}} \quad (16)$$

where x and y are the mean in the first and second periods of the data series, m and n are the numbers of observations in the first and second periods of the data, and S is the standard deviation of the data. A data series is considered to be homogeneous when the test statistics t is higher than 1.96 for $n = 49$ at a 95% confidence level.

3.2 Evaluation of the tests

Based on the results obtained from various homogeneity tests, the data series were classified into three categories, namely A ("useful"), B ("doubtful") and C ("suspect") (Wijngaard et al., 2003). A data series is categorized as class A when it satisfies the null hypothesis of at least four out of seven homogeneity tests used in the study. A data series is categorized as class B when the null hypothesis of homogeneity is rejected in more than three out of seven tests. On the

other hand, when the null hypothesis of homogeneity is rejected in more than four out of seven tests, the data series is categorized as class C. Time series data of this category must be discarded.

4. Results

4.1 Homogeneity test results

4.1.1 Pettitt's test

The results obtained using Pettitt's test at different stations are presented in Figure 3a. A bold horizontal line in the figure is used to represent the critical value of the test statistics ($X_E = 235$) at a 95% confidence level. If the estimated test statistic is lower than the critical value, the null hypothesis of homogeneity cannot be rejected; therefore, the data series is considered as homogeneous. Figure 3a shows that Pettitt's test statistics estimated for the rainfall time series at Dalbandin, Jiwani, Khuzdar, Lasbela, Nokkundi, Panjgur, and Turbat stations are lower than the critical value in all months. Rainfall time series data recorded at stations in Barkhan, Kalat, Ormara, Pasni, Sibbi, and Zhob were found inhomogeneous for a few months as the estimated test statistics exceeded the critical value. Non-homogeneity was found to vary for different months at different stations. At the Kalat station, the rainfall time series was found to be inhomogeneous in six months. Non-homogeneity at Barkhan and Ormara was detected in four months, at Sibbi in three months, and at Quetta and Pasni in one month. It can also be noted that the rainfall time series in November was found homogeneous by Pettitt's test at all stations.

4.1.2 SNHT

Results of the SNHT are shown in Figure 3b. The critical value of this test at a 95% confidence level for the sample size used in the present study is 8.45; therefore, estimated test statistics for the data series higher than this value were considered inhomogeneous. Figure 3b shows non-homogeneity in rainfall time series in one or more months in every station. It was found that rainfall time series for the month of June are inhomogeneous in 10 stations, while the months of February, March and August were found homogeneous at all stations. The total number of inhomogeneous monthly rainfall time series at different stations detected by SNHT (29) was higher than those detected by Pettitt's test (21).

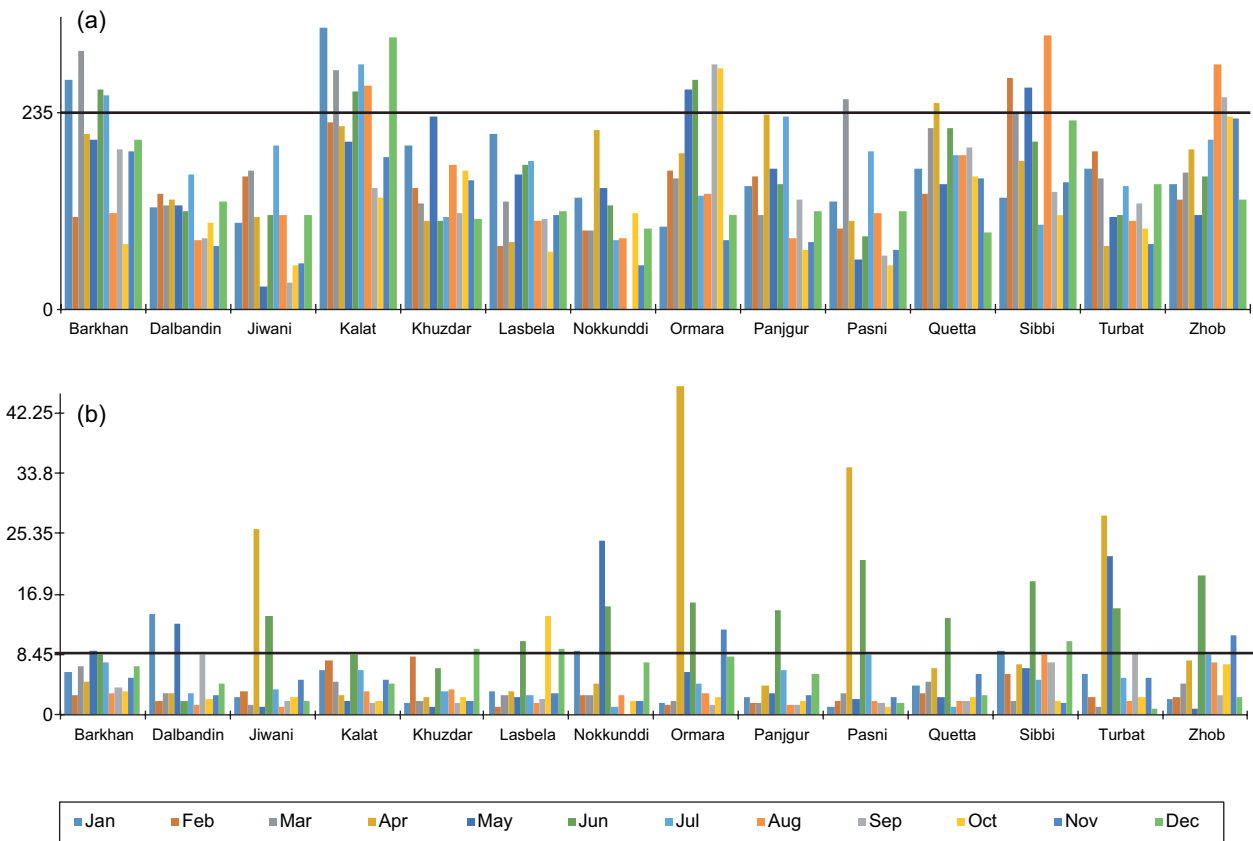


Fig. 3. Results of (a) Pettitt's test, and (b) standard normal homogeneity test (SNHT) for precipitation series of different months.

4.1.3 Cumulative deviation test

The results of the cumulative deviation test for monthly rainfall time series at each station are shown in Figure 4a. A bold horizontal line in the figure is used to represent the critical value of the test statistics (> 1.27) at a 95% confidence level. Estimated test statistics for the data series higher than this value were considered inhomogeneous. It can be seen that the test has identified homogeneous rainfall time series as most of the station for all months except Barkhan, Kalat, Sibbi, and Zhob. The Sibbi rainfall series was found inhomogeneous in the months of May and August, while the Zhob data were found inhomogeneous in August, October, and November. Data at Barkhan and Kalat were found inhomogeneous in June. The cumulative deviation test found homogeneous time series data in more stations compared to Pettitt's and SNHT tests.

4.1.4 Von Neumann's test

The obtained results using von Neumann's test are given in Figure 4b. Two threshold lines are shown in this figure. The threshold line at 1.54 was used to detect homogeneity in rainfall time series at a 95% confidence level. Estimated test statistics for the data series less than 1.54 were considered homogeneous. It can be seen from the figure that von Neumann's test detected homogeneous data in seven stations. Rainfall time series for a few months at Barkhan, Jiwani, Nokkundi, Ormara, Pasni, Sibbi, and Zhob were found inhomogeneous. At Barkhan station, non-homogeneity was detected in the rainfall time series of July and September, at Jiwani in February, at Nokkundi in May, at Ormara and Pasni in April, at Sibi in January and June, and at Zhob in June and November. Overall, rainfall time series of nine months at different stations were found inhomogeneous by von Neumann's test. Test statistics equal

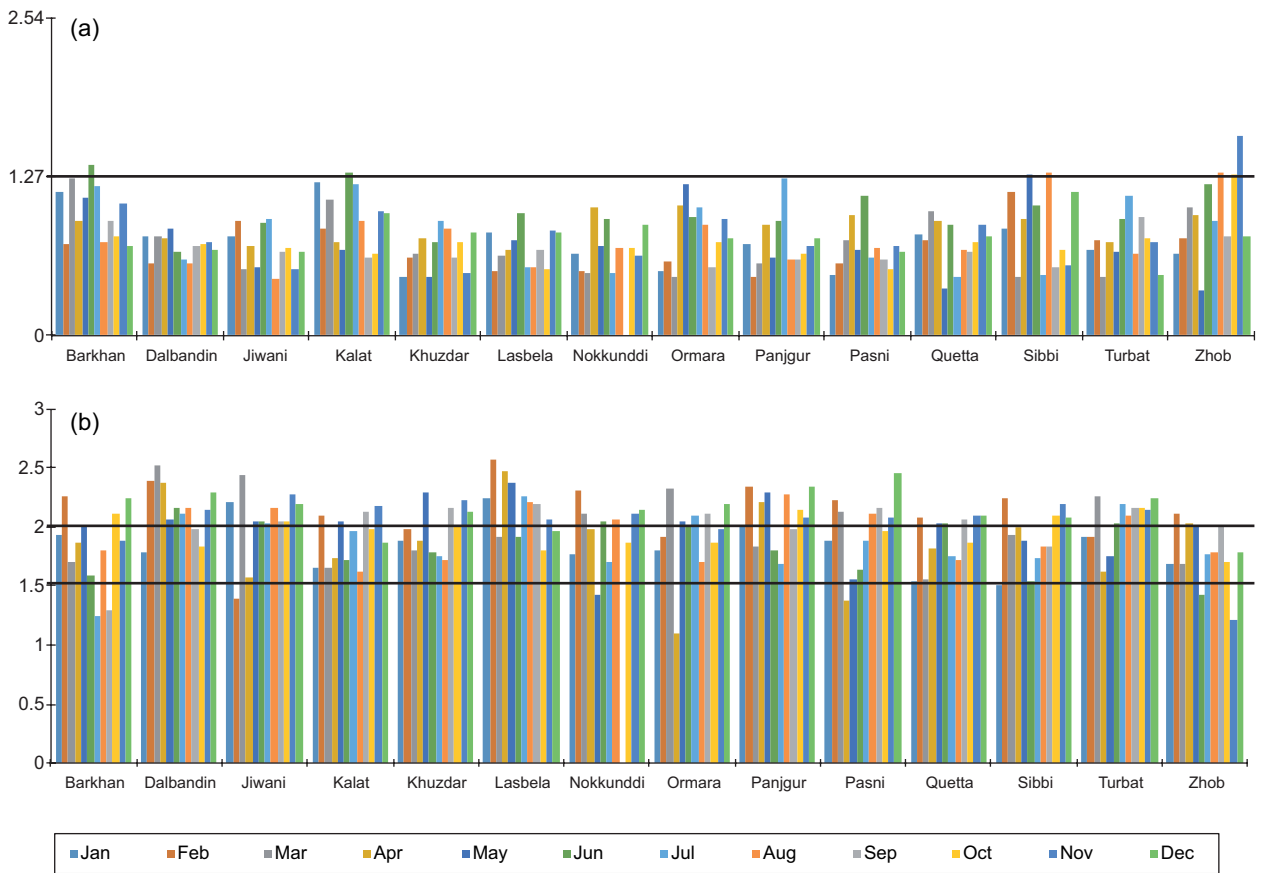


Fig. 4. Results of (a) cumulative deviation test, and (b) von Neumann’s test for precipitation series of different months.

to 2.0 indicate that there is a break in the series and above 2.0 that there is a rapid variation in the means of the series. The figure shows that this last feature is present in almost all stations during November, December, February, and May. On the other hand, rainfall time series in January and April was found homogeneous in most of the stations.

4.1.5 Bayesian test

The results from the Bayesian test of homogeneity are shown in Figure 5a. Bayesian test statistics higher than 2.48 suggest that there is a change in the mean of the series; therefore, the time series is inhomogeneous. It can be seen from the figure that the Bayesian test identified homogeneous rainfall time series for most of the months in almost all stations. Non-homogeneity was detected for the rainfall time series of June at Barkhan, Kalat, Pasni, Sibbi, and Zhob. The results are very similar to those obtained

using SNHT, which also detected non-homogeneity in June in most of the stations. On the other hand, rainfall series for March, July, September, and October were found homogenous at all stations. Overall, the Bayesian test detected non-homogeneity in 13 months at different stations.

4.1.6 Worsley’s likelihood ratio test

Results obtained using the Worsley’s likelihood ratio test are presented in Figure 5b. Statistics higher than 3.16 suggest there is a change in the mean of the series; therefore, the time series is inhomogeneous. Like the SNHT and Bayesian tests, Worsley’s likelihood ratio test detected non-homogeneity in rainfall time series for the June at most stations. Rainfall time series for all months at Kalat station were found homogeneous with this method. It also detected homogeneity in rainfall time series for February, March, July and August at all stations.

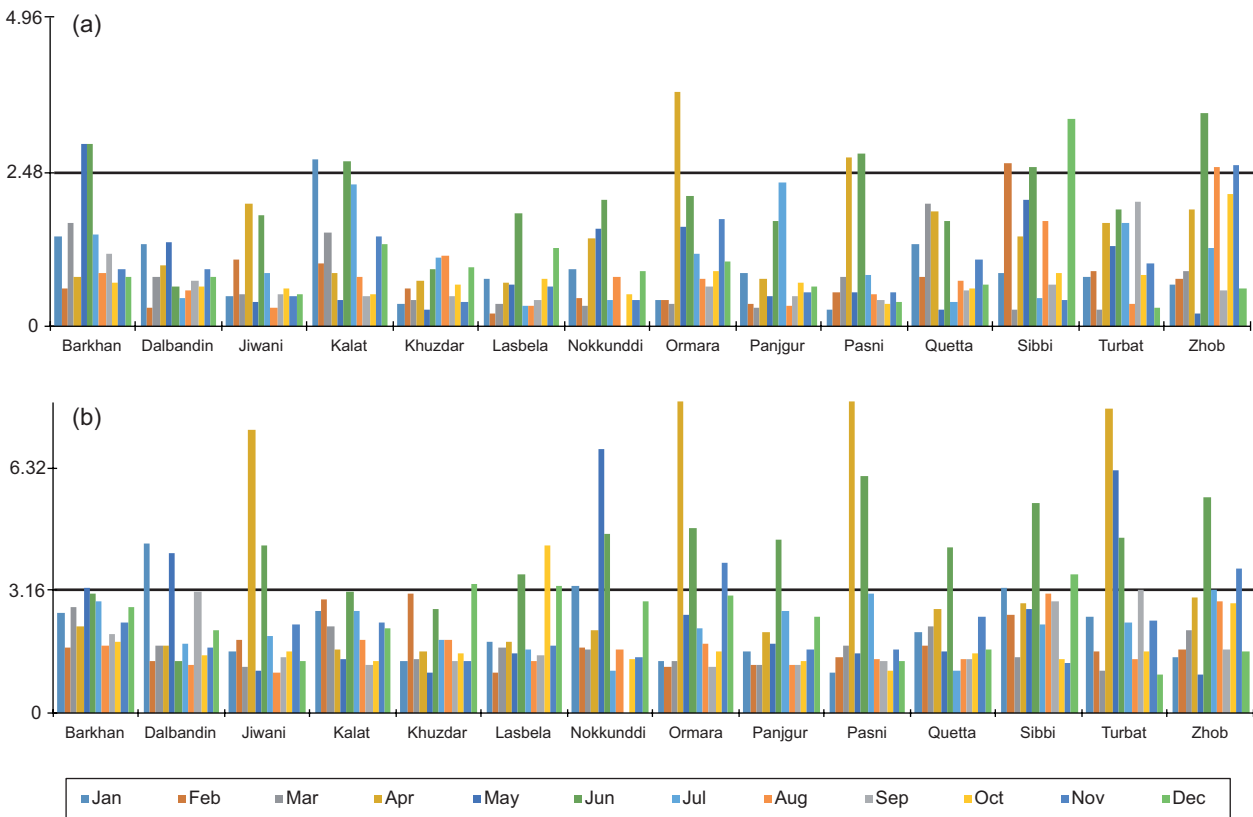


Fig. 5. Results of (a) Bayesian test, and (b) Worsley's likelihood ratio tests for precipitation series of different months.

4.1.7 Student's *t*-test

The results obtained using sequential Student's *t*-test (Machiwal et al., 2015) are given in Table II. Bold figures in the table represent the months whose mean has changed significantly at a certain point. It can be seen that most of the data are found homogeneous by Student's *t*-test. However, change in the mean was found in some months at Barkhan, Kalat, Ormara, Sibbi and Zhub. Compared to other tests, Student's *t*-test detected homogeneity in most of the time series. It detected non-homogeneity in three months at Kalat, and one month at Barkhan, Ormara, Sibbi, and Zhub.

4.2 Evaluation of homogeneity test results

Based on the results obtained using different tests, rainfall time series data were categorized into three groups, as shown in Table III. It can be seen that most of the months are classified into class A, which means that data series are useful. However, few months, such as April at Pasni, and June at Barkhan

and Sibbi, are classified as B, which means that those rainfall time series data are doubtful. November at Zhub is categorized into class C, which means that it is suspected. Overall, monthly rainfall time series data were found useful for hydro-meteorological studies in most of the months for almost all stations.

4.3 Detection of non-homogeneity in annual time series

The monthly observed rainfall data were converted to annual time series for detecting non-homogeneity in annual rainfall time series at a 95% confidence level. The annual rainfall time series of each station were tested separately. The obtained results are presented in Table IV. Bold characters in this table represent inhomogeneity of rainfall time series at the specific station.

Rainfall stations were classified into three classes based on the results of the statistical test. It can be seen that different test detected non-homogeneity in rainfall time series at different stations. Six out of

Table II. Results obtained with Student’s *t*-test for monthly rainfall series.

Station	Jan	Feb	Mar	Apr	May	Jun	Jul	Aug	Sep	Oct	Nov	Dec
Barkhan	-0.76	-0.16	-1.48	0.03	-1.64	-2.3	-0.04	-0.04	1.51	-0.89	-0.19	-0.16
Dalbandin	-0.85	0.29	-0.21	1.31	-0.55	0.11	-0.06	1	0.25	0.7	-1.34	-0.66
Jiwani	1.57	-0.23	-0.93	1.08	0.79	-0.92	1.21	0.71	1.08	-0.8	-0.16	-0.78
Kalat	-2.03	-1.23	-2.02	-0.54	-0.03	-1.77	-2.35	-0.34	1.24	0.05	-1.81	-1.46
Khuzdar	-0.15	-0.17	0.24	-1.08	0.24	-0.63	-1.72	0.29	-0.21	-0.25	0.32	0.2
Lasbela	0.22	-0.01	0.15	0.33	-1.39	-0.78	-0.21	0.14	0.28	0.36	-0.5	0.12
Nokkundi	0.52	-0.51	0.46	1.93	1.28	-1.03	0.52	1.32	-	1.58	-0.29	-0.48
Ormara	-0.22	0.76	0.68	1.04	-6.44	-0.72	1.31	1.73	0.01	0.88	1.34	-0.48
Panjgur	0.75	0.4	0.35	0.6	0.07	-0.72	1.6	0.49	0.02	-0.78	-0.81	0.15
Pasni	-0.3	0.84	0.45	1.09	-0.65	-1.1	0.39	1.37	-1.03	0.5	-0.79	1.01
Quetta	0.88	0.3	0.15	1.06	0.51	-0.78	0.09	0.67	-0.46	0.35	-0.58	-0.29
Sibbi	-0.89	-2.01	-0.32	0.76	-2.41	-0.94	-0.25	-1.52	1.6	-0.83	0.23	-1.69
Turbat	0.6	0.43	0.43	0.45	0.43	0.43	0.43	0.43	-0.77	0.43	0.43	0.43
Zhob	-0.38	-0.78	0.59	1.47	0.39	-1.33	0.85	1.89	-0.38	-1.74	-2.3	-1.07

Bold figures represent non-homogeneity in the corresponding month and station.

Table III. Classification of monthly rainfall time series data based on the results obtained using different homogeneity tests.

Station	Jan	Feb	Mar	Apr	May	Jun	Jul	Aug	Sep	Oct	Nov	Dec
Barkhan	A	A	A	A	A	B	A	A	A	A	A	A
Dalbandin	A	A	A	A	A	A	A	A	A	A	A	A
Jiwani	A	A	A	A	A	A	A	A	A	A	A	A
Kalat	A	A	A	A	A	A	A	A	A	A	A	A
Khuzdar	A	A	A	A	A	A	A	A	A	A	A	A
Lasbela	A	A	A	A	A	A	A	A	A	A	A	A
Nokkundi	A	A	A	A	A	A	A	A	-	A	A	A
Ormara	A	A	A	A	A	A	A	A	A	A	A	A
Panjgur	A	A	A	A	A	A	A	A	A	A	A	A
Pasni	A	A	A	B	A	A	A	A	A	A	A	A
Quetta	A	A	A	A	A	A	A	A	A	A	A	A
Sibbi	A	A	A	A	A	B	A	A	A	A	A	A
Turbat	A	A	A	A	A	A	A	A	A	A	A	A
Zhob	A	A	A	A	A	A	A	A	A	A	C	A

Bold letters represent non-homogeneity in the corresponding month and station.

14 stations were found inhomogeneous by von Neumann’s ratio test, while non-homogeneity was only detected at one station inhomogeneous by Student’s *t*-test. SNHT, cumulative deviation, and Bayesian tests detected non-homogeneity only at Barkhan and Kalat. Pettitt’s test revealed non-homogeneity at Barkhan, Kalat, and Khuzdar, while Worsley’s likelihood ratio test detected non-homogeneity in annual rainfall time series at Barkhan, Kalat and Nokkundi.

Inhomogeneous data for annual rainfall time series were only detected at Barkhan and Kalat

by almost all tests; therefore, they are classified as class C or suspected. Annual rainfall series at other stations were found homogeneous by most of the statistical tests, thus categorized as class A or useful for hydro-climatological studies.

4.4 Analysis of breaks in monthly and annual rainfall time series

Four tests (Pettitt’s, SNHT, cumulative deviation and Worsley’s likelihood ratio) provide information about the break point in a time series. Therefore, they

Table IV. Results of the homogeneity tests for annual rainfall time series.

Station	Pettitt's	SNHT	Cumulative deviation	Von Neumann's	Worley's	Bayesian	Student's t	Class
Barkhan	328	10.77	1.48	1.224	3.64	2.99	-1.01	C
Dalbandin	172	3.49	0.86	2.021	1.89	0.98	-0.51	A
Jiwani	180	3.9	0.85	2.15	2.02	0.64	0.4	A
Kalat	418	14.91	1.91	1.187	4.54	4.35	-2.9	C
Khuzdar	254	6.32	1.14	1.531	2.64	1.69	-1.07	A
Lasbela	93	2.37	0.57	2.375	1.55	0.43	-0.4	A
Nokkundi	148	9.02	0.91	1.919	3.25	0.96	0.52	A
Ormara	170	8.45	0.8	1.403	3.13	0.78	0.93	A
Panjgur	158	2.56	0.69	2.185	1.61	0.51	1.06	A
Pasni	103	2.18	0.65	1.769	1.48	0.51	1.3	A
Quetta	222	4.04	0.93	1.197	2.06	1.46	0.64	A
Sibbi	250	4.66	0.97	1.872	2.22	1.44	-1.73	A
Turbat	133	1.93	0.58	2.011	1.39	0.63	0.77	A
Zhob	140	4.09	0.87	1.46	2.07	0.45	-0.15	A

Bold figures represent non-homogeneity.

were used to detect break points in time series data classified as class B and C. The results obtained are given in Table V. Pettitt's test detected a change in 1987 at the Barkhan station, while the cumulative deviation test detected the change in 1992. SNHT and Worsley's tests also detected a change, but not at a 5% level of significance. Both tests also detected a change in rainfall time series at Sibbi in June 2006, and at Pasni in 1961. A break point in the rainfall time series of November at Zhob, which is the only month classified as class C, was detected in 1991 by SNHT, cumulative deviation, and Worsley's likelihood ratio tests.

The time series data were also analyzed to confirm the change in means before and after the break by using Pettitt's test and SNHT. As an example, changes in means at Barkhan and Zhob stations are shown in

Figure 6. It can be seen that the mean rainfall of June at Barkhan (Fig. 6a) changed from 27.73 to 55.21 mm in 1987. This means that the mean rainfall changed by 39.88% (31.48 mm) in that year. The change in 1987 was detected by Pettitt's test as a break point. The year 1987 is near the middle of the time series, which justifies the findings of other researchers (Wijngaard et al., 2003; Sahin and Cizioglu, 2010; Dhorde and Zarenistanak, 2013; Taxak et al., 2014) who determined that Pettitt's test is more sensitive to breaks in the middle of a series. A similar result was observed at Zhob station (Fig. 6b), where the mean rainfall in November increased from 3.59 to 30.75 mm (79.09%) in 1991, which was detected as a break point by Pettitt's test.

Four tests (Pettitt's, SNHT, cumulative deviation and Worsley's likelihood ratio) were also used to

Table V. Detected break years in monthly rainfall time series by various methods.

Station	Month	Pettitt's		SNHT		Cumulative		Worsley's	
		X_E	Change year	T_0	Change year	Q	Change year	W	Change year
Barkhan	Jun	262	1987	8.31	-	1.37	1992	3.10	-
Sibbi	Jun	201	-	18.84	2006	1.04	-	5.42	2006
Pasni	Apr	106	-	34.71	1961	0.96	-	10.68	1961
Zhob	Nov	229	-	11.07	1991	1.60	1991	3.70	1991

Bold figures represent non-homogeneity.

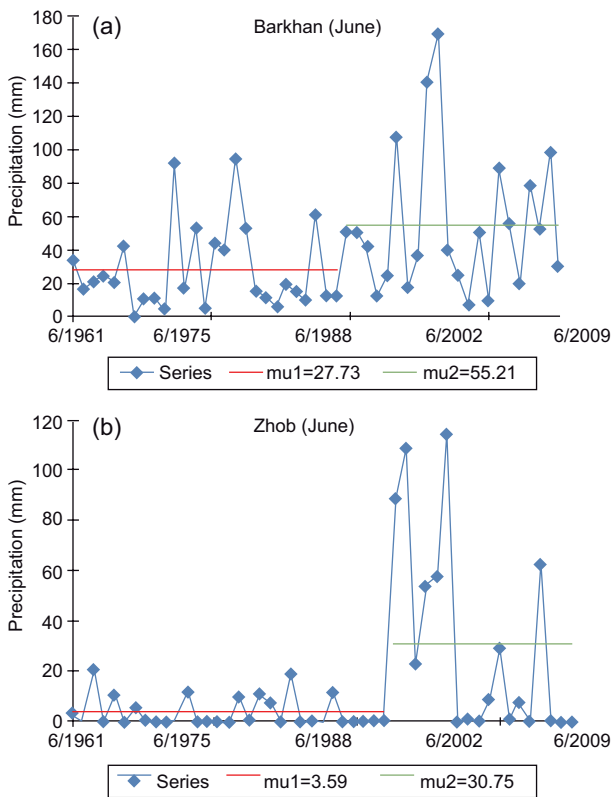


Fig. 6. Changes in mean rainfall in (a) June at Barkhan station and (b) November at Zhob station.

analyze mean changes in annual rainfall time series at Barkhan and Kalat, which were classified into class C. The obtained results are given in Table VI. It can be seen that all methods detected the changes in means in the same year for both stations, 1974 at Barkhan and 1981 in Kalat. The mean annual rainfall at Barkhan changed from 271.95 to 433.76 mm in 1974. On the other hand, the average annual rainfall at Kalat increased from 88.48 to 218.20 mm in 1981. These large changes were detected as non-climatic by most statistical tests; therefore, annual rainfall time series data at those stations were classified as suspect.

4.5 Comparison of tests

The results obtained from monthly and annual rainfall time series using different methods were compared (Fig. 7) to identify the method that detected more non-homogeneity in rainfall time series. It was found that SNHT and Worsley’s likelihood ratio test detected non-homogeneity in 29 monthly time series, while Student’s *t*-test only in seven time series. On the other hand, von Neumann’s test identified a maximum number of non-homogeneity in annual time series, while Student’s *t*-test detected the minimum. It is worth mentioning that there is consistency in the results of SNHT and Worsley’s likelihood ratio test in the detected homogeneity in monthly as well as annual time series data.

5. Conclusions

Homogeneity in monthly and annual rainfall time series over the period 1961-2009 at 14 meteorological stations located in the arid region of Pakistan was assessed in this study using seven popular statistical tests. The results reveal that rainfall time series for most of the months at almost all stations are homogeneous; therefore, they can be used for hydro-meteorological studies. The annual rainfall time series data at 12 out of 14 stations were found useful while two were found suspected. The obtained results were verified with different tests and the break points in non-homogeneous rainfall time series were detected. In addition to these tests, metadata of stations, if available, can be further used to verify the results. It is expected that the methodology presented in this paper will help climate and hydrology researchers to assess the homogeneity of rainfall time series in a robust way. It will help in using quality time series data with confidence in hydro-climatological studies. Furthermore, the methodology presented in this

Table VI. Detected break years in annual rainfall time series by various methods.

Station	Year of change Pettitt’s	Year of change SNHT	Year of change cumulative	Average before change (mm)	Average after change (mm)	Change (mm)
Barkhan	1974	1974	1974	271.95	433.76	161.81
Kalat	1981	1981	1981	88.48	218.20	129.72

paper can be used to detect non-homogeneous time series and the break point for the systematic correction of non-homogeneity.

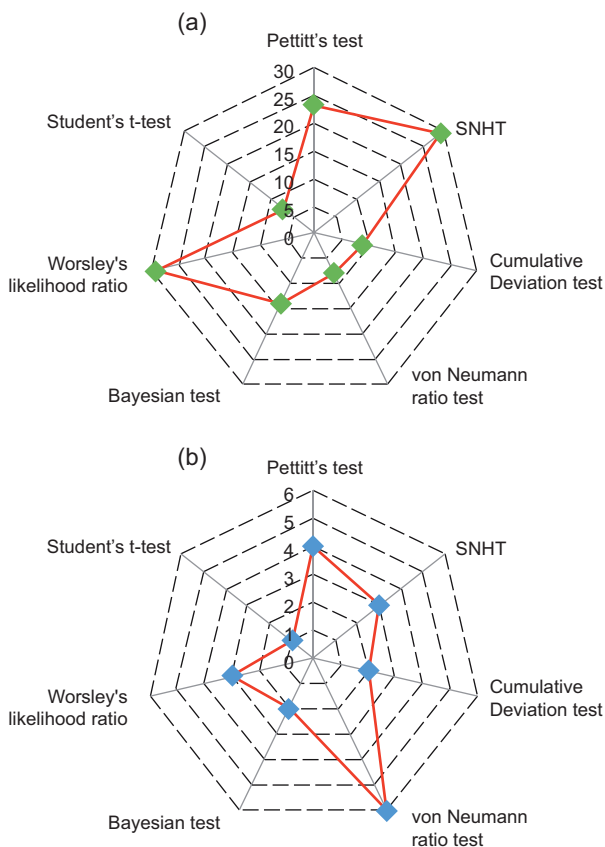


Fig. 7. Comparison of inhomogeneity detected by different methods in (a) monthly and (b) annual rainfall time series.

Acknowledgments

We are grateful to Universiti Teknologi Malaysia (UTM) for providing financial support for this research through the GUP grant No. Q.J130000.2522.13H07 and Q.J130000.21A2.04E10.

The research was also supported by key program granted by the National Key R&D Program of China (NO: 2017YFC0403506), Young Top-Notch Talent Support Program of National High-level Talents Special Support Plan.

References

- Ahmed K., Shahid S. and Harun S.B., 2014. Spatial interpolation of climatic variables in a predominantly arid region with complex topography. *Environ. Syst. Decis.* 34, 555-563.
DOI: 10.1007/s10669-014-9519-0
- Ahmed K., Shahid S., Haroon S.B. and Wang X.J., 2015. Multilayer perceptron neural network for downscaling rainfall in arid region. A case study of Baluchistan, Pakistan. *J. Earth Syst. Sci.* 124, 1325-1341.
DOI: 10.1007/s12040-015-0602-9
- Ahmed K., Shahid S., Harun S.B. and Wang X.J., 2016. Characterization of seasonal droughts in Balochistan Province, Pakistan. *Stoch. Environ. Res. Risk Assess.* 30, 747-762. DOI: 10.1007/s00477-015-1117-2
- Ahmed K., Shahid S., Chung E.S., Ismail T. and Wang X.J., 2017. Spatial distribution of secular trends in annual and seasonal precipitation over Pakistan. *Clim. Res.* 74, 95-107.
DOI: 10.3354/cr01489
- Alamgir M., Shahid S., Hazarika M.K., Nashrullah S., Harun S.B. and Shamsudin S., 2015. Analysis of meteorological drought pattern during different climatic and cropping seasons in Bangladesh. *J. Am. Water Resour. As.* 51, 794-806. DOI: 10.1111/jawr.12276
- Alexandersson H., 1986. A homogeneity test applied to precipitation data. *Int. J. Climatol* 6, 661-675.
DOI: 10.1002/joc.3370060607
- Alexandersson H. and Moberg A., 1997. Homogenization of Swedish temperature data. Part I: Homogeneity test for linear trends. *Int. J. Climatol.* 17, 25-34.
DOI: 10.1002/(SICI)1097-0088(199701)17:1<25::AID-JOC103>3.0.CO;2-J
- Auer I., Böhm R., Jurković A., Orlik A., Potzmann R., Schöner W., Ungersböck M., Brunetti M., Nanni T. and Maugeri M., 2005. A new instrumental precipitation dataset for the greater alpine region for the period 1800–2002. *Int. J. Climatol.* 25, 139-166.
DOI: 10.1002/joc.1135
- Bates B., Kundzewicz Z., Wu S. and Palutikof J., 2008. *Climate Change and Water. Technical Paper of the Intergovernmental Panel on Climate Change, IPCC Secretariat, Geneva, 210 pp.*
- Beaulieu C., Seidou O., Ouarda T.B. and Zhang X., 2009. Intercomparison of homogenization techniques for precipitation data continued: Comparison of two recent Bayesian change point models. *Water Resour. Res.* 45, W08410. DOI: 10.1029/2008WR007501

- Bingham C. and Nelson L.S., 1981. An approximation for the distribution of the von Neumann ratio. *Technometrics* 23, 285-288. DOI: 10.1080/00401706.1981.10487651
- Buishand T.A., 1982. Some methods for testing the homogeneity of rainfall records. *J. Hydrol.* 58, 11-27. DOI: 10.1016/0022-1694(82)90066-X
- Che Ros F., Tosaka H., Sidek L.M. and Basri H., 2016. Homogeneity and trends in long-term rainfall data, Kelantan River Basin, Malaysia. *Int. J. River Basin Manag.* 14, 151-163. DOI: 10.1080/15715124.2015.1105233
- Chernoff H. and Zacks S., 1964. Estimating the current mean of a normal distribution which is subjected to changes in time. *J. Am. Stat. Assoc.* 3, 999-1018. DOI: 10.1214/aoms/1177700517
- Costa A.C. and Soares A., 2009. Homogenization of climate data: review and new perspectives using geostatistics. *Math. Geosci.* 41, 291-305. DOI: 10.1007/s11004-008-9203-3
- Craddock J.M., 1979. Methods of comparing annual rainfall records for climatic purposes. *Weather* 34, 332-346. DOI: 10.1002/j.1477-8696.1979.tb03465.x
- De Lima M., Carvalho S. and De Lima J., 2010. Investigating annual and monthly trends in precipitation structure: an overview across Portugal. *Nat. Hazards Earth Syst. Sci.* 10, 2429-2440. DOI: 10.5194/nhess-10-2429-2010, 2010.
- Dhorde A.G. and Zarenistanak M., 2013. Three-way approach to test data homogeneity: An analysis of temperature and precipitation series over southwestern Islamic Republic of Iran. *J. Indian Geophys. Union* 17, 233-242.
- Domonkos P., 2014. Homogenization of precipitation time series with ACMANT. *Theor. Appl. Climatol.* 122, 303-314. DOI: 10.1007/s00704-014-1298-5
- Firat M., Dikbas F., Koç A.C. and Gungor M., 2010. Missing data analysis and homogeneity test for Turkish precipitation series. *Sadhana* 35, 707-720. DOI: 10.1007/s12046-010-0051-8
- Gardner L., 1969. On detecting changes in the mean of normal variates. *Ann. Math. Statist.* 40, 116-126. DOI: 10.1214/aoms/1177697808
- Hussain M.S. and Lee S., 2014. Long-term variability and changes of the precipitation regime in Pakistan. *Asia-Pacific J. Atmos. Sci.* 50, 271-282. DOI: 10.1007/s13143-014-0015-8
- Kang H.M. and Yusof F., 2012. Homogeneity tests on daily rainfall series. *Int. J. Contemp. Math. Sci.* 7, 9-22.
- Li-Juan C. and Zhong W.Y., 2012. Progress in research on homogenization of climate data. *Adv. Clim. Change Res.* 3, 59-67. DOI: 10.3724/SP.J.1248.2012.00059
- Machiwal D. and Jha M.K., 2008. Comparative evaluation of statistical tests for time series analysis: application to hydrological time series. *Hydrol. Sci. J.* 53, 353-366. DOI: 10.1623/hysj.53.2.353
- Machiwal D., Kumar S. and Dayal D., 2015. Characterizing rainfall of hot arid region by using time-series modeling and sustainability approaches. A case study from Gujarat, India. *Theor. Appl. Climatol.* 124, 593-607. DOI: 10.1007/s00704-015-1435-9
- McLachlan G. and Krishnan T., 2007. *The EM algorithm and extensions.* John Wiley and Sons, 304 pp. (Wiley Series in Probability and Statistics, 382). DOI: 10.1002/9780470191613
- Menne M.J., Williams C.N. and Vose R.S., 2009. The US Historical Climatology Network monthly temperature data, version 2. *Bull. Amer. Meteor. Soc.* 90, 993-1007. DOI: 10.1175/2008BAMS2613.1
- Morozova A. and Valente M., 2012. Homogenization of Portuguese long-term temperature data series: Lisbon, Coimbra and Porto. *Earth Syst. Sci. Data* 4, 187-213. DOI: 10.1594/PANGAEA.785377
- Ng S.K. and McLachlan G.J., 2004. Using the EM algorithm to train neural networks: misconceptions and a new algorithm for multiclass classification. *Neural Networks, IEEE Transactions on*, 15, 738-749.
- Panofsky H.A. and Brier G.W., 1958. *Some applications of statistics to meteorology,* Mineral Industries Extension Services, College of Mineral Industries, Pennsylvania State University.
- Peterson T.C., Easterling D.R., Karl T.R., Groisman P., Nicholls N., Plummer N., Torok S., Auer I., Boehm R., Gullett D., Vincent L., Heino R., Tuomenvirta H., Mestre O., Szentimrey T., Salinger J., Førland E.J., Hanssen-Bauer I., Alexandersson H., Jones P. and Parker D., 1998. Homogeneity adjustments of in situ atmospheric climate data: A review. *Int. J. Climatol.* 18, 1493-1517. DOI: 10.1002/(SICI)1097-0088(19981115)18:13<1493::AID-JOC329>3.0.CO;2-T
- Pettitt A., 1979. A non-parametric approach to the change-point problem. *J. Appl. Stat.* 28, 126-135. DOI: 10.2307/2346729
- Reiter A., Weidinger R. and Mauser W., 2012. Recent climate change at the upper Danube—A temporal and

- spatial analysis of temperature and precipitation time series. *Climatic Change* 111, 665-696. DOI: 10.1007/s10584-011-0173-y
- Sahin S. and Cigizoglu H.K., 2010. Homogeneity analysis of Turkish meteorological data set. *Hydrol. Sci.* 24, 981-992. DOI: 10.1002/hyp.7534
- Santos M. and Fragoso M., 2013. Precipitation variability in northern Portugal: Data homogeneity assessment and trends in extreme precipitation indices. *Atmos. Res.* 131, 34-45. DOI: 10.1016/j.atmosres.2013.04.008
- Syed F.S., Iqbal W., Syed A.B. and Rasul G., 2014. Uncertainties in the regional climate models simulations of South-Asian summer monsoon and climate change. *Clim. Dyn.* 42, 2079-2097. DOI: 10.1007/s00382-013-1963-x
- Tatli H., 2015. Downscaling standardized precipitation index via model output statistics. *Atmósfera* 28, 83-98. doi.org/10.1016/S0187-6236(15)30002-3
- Taxak A.K., Murumkar A.R. and Arya D.S., 2014. Long term spatial and temporal rainfall trends and homogeneity analysis in Wainganga basin, Central India. *Weather Clim. Extrem.* 4, 50-61. DOI: 10.1016/j.wace.2014.04.005
- Tayanç M., Dalfes H.N, Karaca M. and Yenigün O., 1998. A comparative assessment of different methods for detecting inhomogeneities in Turkish temperature data set. *Int. J. Climatol.* 18, 561-578. DOI: 10.1002/(sici)1097-0088(199804)18:5<561::aid-joc249>3.0.co;2-y
- Toreti A., Kuglitsch F.G., Xoplaki E., Della-Marta P.M., Aguilar E., Prohom M. and Luterbacher J., 2011. A note on the use of the standard normal homogeneity test to detect inhomogeneities in climatic time series. *Int. J. Climatol.* 31, 630-632. DOI: 10.1002/joc.2088
- Trenberth K.E., 2011. Changes in precipitation with climate change. *Clim. Res.* 47, 123. DOI: 10.3354/cr00953
- Tsidu G.M., 2012. High-resolution monthly rainfall database for Ethiopia: Homogenization, reconstruction, and gridding. *J. Climate* 25, 8422-8443. DOI: 10.1175/jcli-d-12-00027.1
- Von Neumann J., 1941. Distribution of the ratio of the mean square successive difference to the variance. *Ann. Math. Stat.* 12, 367-395. DOI: 10.1214/aoms/1177731677.
- Wijngaard J., Tank A.K. and Können G., 2003. Homogeneity of 20th century European daily temperature and precipitation series. *Int. J. Climatol.* 23, 679-692. DOI: 10.1002/joc.906
- Worsley K.J., 1979. On the likelihood ratio test for a shift in location of normal populations. *J. Am. Stat. Assoc.* 74, 365-367. DOI: 10.1080/01621459.1979.10482519
- Yozgatligil C. and Yazici C., 2015. Comparison of homogeneity tests for temperature using a simulation study. *Int. J. Climatol.* 36, 62-81. DOI: 10.1002/joc.4329