



Fuzzy Arithmetical Modeling of a Steam Turbine and a Boiler System

Wan Munirah Wan Mohamad^a, Tahir Ahmad^{a,b},
Niki Anis Ab Karim^{a,b} and Azmirul Ashaari^a

^a*Department of Mathematical Sciences, Faculty of Science, Universiti Teknologi Malaysia*

81310 UTM, Skudai, Johor, Malaysia

^b*Centre for Sustainable Nanomaterials, Ibnu Sina Institute for Scientific and Industrial Research, Universiti Teknologi Malaysia*

81310 UTM, Skudai, Johor, Malaysia

E-mail(*corresp.*): tahir@ibnusina.utm.my

Received April 27, 2017; revised December 18, 2017; accepted December 19, 2017

Abstract. The steam turbine and a boiler are important components of a power generation plant. Improved efficiency of a power plant leads to increase of energy production and less waste. In this paper, a model of the power plant as a multivariable system using fuzzy arithmetic which is based on the Transformation Method (TM) is presented. The analytical solution is used to evaluate the state space model. The TM is then used to quantify the influence of each parameter and their gain factors are calculated to allow estimation of relative measures of uncertainty. The method is applied to a boiler and a steam turbine systems for simulation, analysis and indication of TM's efficiency. The efficiency of TM is presented in this paper.

Keywords: fuzzy arithmetic, steam turbines, boiler.

AMS Subject Classification: 97F90.

1 Introduction

One of the most frequently-researched subjects in thermal energy is the power-generation plant. A combined-cycle power plant is a large-scale electrical power generation plant in which electricity is obtained from both gas and steam turbines. Energy is transferred in the form of heat or gaseous flow through each turbine to produce electricity [12]. Furthermore, additional electricity is produced using wasted heat which may be found in exhaust gases from turbines or other parts of the system. Effort is also taken to reduce losses of energy.

Copyright © 2018 The Author(s). Published by VGTU Press

This is an Open Access article distributed under the terms of the Creative Commons Attribution License (<http://creativecommons.org/licenses/by/4.0/>), which permits unrestricted use, distribution, and reproduction in any medium, provided the original author and source are credited.

A steam turbine has complex features in order to increase thermal efficiency [1, 11]. This complexity is also the reason why nonlinear analytical model has been developed to study transient dynamics of steam turbine. Such a model can be used for control, simulation and monitoring of the state of the system.

The furnace described in [12] is chosen for this research. A furnace is a thermal device in which water or air is heated and later circulated throughout the system [9]. The furnace is an important subsystem of a boiler in combined-cycle power plant. The system is usually in temperate countries with four seasons. The most common fuel sources for modern furnaces are coal, liquefied petroleum gas, and fuel oil.

Another component of a boiler discussed in this paper is the reheater. The reheater is an important component in a high-capacity power plant. Heat exchange occurs whereby temperature and pressure will be reduced before entering in low speed turbine [10]. The temperature drops in reheater due to pressure loss.

A boiler and a steam turbine system have complex features affecting thermal efficiency. In this regard, no mathematical model can precisely describe such a complicated process. Inaccuracy is inherent in the developed model due to uncertain parameters. The lack of accurate modeling causes many difficulties in deciding control strategies and a measure for model fitness is required for better overall performance.

Previous research by Izaz Ullah Khan [8] only describes the Inverse Feedback Fuzzy State Space Model (FFSSM) for the steam turbine model. The algorithm is used to maximize the power production with optimal input parameters. The inverse modeling approach was used to determine the optimal operating conditions. The method was used at the three stages of the steam turbine.

Graph was used in [7] to model the boiler system. The boiler system consists of subsystems such as furnace, superheater, drum, riser and reheater. These subsystems are represented as vertices and the interconnections between subsystems are associated with edges of the graph. Initially, the input-output variables for the subsystems are identified using a state space approach. It is used as an initial for the development of the fuzzy model of the system.

The transformation method is carried out to reduce the number of parameters. It is described in Section 2 below.

2 The transformation method (TM)

There are two types of TM: general and reduced forms. Both types are acceptable for simulation and analysis of systems with uncertain parameters. They can be used to evaluate and simulate static or dynamical systems with fuzzy-valued parameters. The equations for coefficients in general TM are proposed in [2, 3, 4, 5].

2.1 Simulation of a system with uncertain parameters: general transformation method

The system's uncertain parameters can be represented by fuzzy numbers \tilde{p}_i where $i = 1, 2, \dots, n$,

$$P_i = X_i^{(0)}, X_i^{(1)}, \dots, X_i^{(m)}, \quad X_i^{(j)} = [a_i^{(j)}, b_i^{(j)}] = \text{cut}_{\mu_j}(\tilde{p}_i), \quad a_i^{(j)} \leq b_i^{(j)},$$

$$i = 1, 2, \dots, n, \quad j = 0, 1, \dots, m.$$

A fuzzy parameterized model is expected to show non-monotonic behavior with respect to n , with $n > 1$. Only the intervals $X_i^{(j)}, i = 1, 2, \dots, n$ for $j = 0, 1, \dots, m-2$, are considered for the transformation scheme. The intervals are then transformed into arrays $\hat{X}_i^{(j)}$ in the form

$$\hat{X}_i^{(j)} = \underbrace{\left(\left(\gamma_{1,i}^{(j)}, \gamma_{2,i}^{(j)}, \dots, \gamma_{(m+1-j),i}^{(j)} \right), \dots, \left(\gamma_{1,i}^{(j)}, \gamma_{2,i}^{(j)}, \dots, \gamma_{(m+1-j),i}^{(j)} \right) \right)}_{(m+1-j)^{i-j}},$$

$$\gamma_{l,i}^{(j)} = \underbrace{\left(c_{l,i}^{(j)}, \dots, c_{l,i}^{(j)} \right)}_{(m+1-j)^{n-i} \text{ elements}}.$$

$$c_{l,i}^{(j)} = \begin{cases} 0, & a_i^{(j)} \text{ for } l = 1, j = 0, 1, \dots, m, \\ \frac{1}{2} \left(c_{l-1,i}^{(j+1)} + c_{l,i}^{(j+1)} \right), & \text{for } l = 2, 3, \dots, m-j, j = 0, 1, \dots, m-2, \\ 0, & b_i^{(j)} \text{ for } l = m-j+1, j = 0, 1, \dots, m, \end{cases}$$

The arithmetical expression of F is given in the form:

$$\tilde{q} = F(\tilde{p}_1, \tilde{p}_2, \dots, \tilde{p}_n).$$

The expression is evaluated separately for up to 2^n combinations using conventional arithmetic for crisp numbers. The result can be expressed in decomposed and transformed forms by the combination $\hat{Z}^{(j)}$ for $j = 0, 1, \dots, m$. The k -th element of ${}^k\hat{Z}^{(j)}$ of the array $\hat{Z}^{(j)}$ is given as

$${}^k\hat{Z}^{(j)} = F \left({}^k\hat{x}_1^{(j)}, {}^k\hat{x}_2^{(j)}, \dots, {}^k\hat{x}_n^{(j)} \right), \quad k = 1, 2, \dots, 2^n.$$

Finally, the fuzzy-valued \tilde{q} of the expression can be obtained in decomposed form

$$Z^{(j)} = [a^{(j)}, b^{(j)}], j = 0, 1, \dots, m$$

by transforming $\hat{Z}^{(j)}$ using the following recursive formulas:

$$a^{(j)} = \min_k(a^{(j+1)}, {}^k\hat{z}^{(j)}), \quad b^{(j)} = \max_k(b^{(j+1)}, {}^k\hat{z}^{(j)}), \quad j = 0, 1, \dots, m-1,$$

$$a^{(m)} = \min_k({}^k\hat{z}^{(m)}) = \max_k({}^k\hat{z}^{(m)}) = b^{(m)}.$$

2.2 Analysis of a system with uncertain parameters: general transformation method

The coefficients $\eta_i^{(j)}$, for $i = 1, 2, \dots, n$ and $j = 0, 1, \dots, m - 1$, are determined:

$$\eta_i^{(j)} = \frac{1}{(m - j + 1)^{n-1} (b_i^{(j)} - a_i^{(j)})} \sum_{k=1}^{(m-j+1)^{n-i}} \sum_{l=1}^{(m-j+1)^{i-1}} (s_2 \hat{z}^{(j)} - s_1 \hat{z}^{(j)}),$$

$$s_1(k, l) = k + (l - 1)(m - j + 1)^{n-i+1},$$

$$s_2(k, l) = k + [(m - j + 1)l - 1](m - j + 1)^{n-i}.$$

The values $a_i^{(j)}$ and $b_i^{(j)}$ denote the lower and upper bound of the interval $X_i^{(j)}$ and $k \hat{z}^{(j)}$ k -th are the elements of the array $\hat{Z}^{(j)}$. The coefficients $\eta_i^{(j)}$ are gain factors from uncertainty in the i -th parameter with respect to the uncertainty of output z with membership level μ_j . Mean gain factors $\eta_i^{(j)}$ are obtained such as:

$$\bar{\eta}_i = \frac{\sum_{j=1}^{m-1} \mu_j \eta_i^{(j)}}{\sum_{j=1}^{m-1} \mu_j}.$$

Finally, the degree of influence ρ_i is determined for $i = 1, 2, \dots, n$ using

$$\rho_i = \frac{\sum_{j=1}^{m-1} \mu_j \left| \eta_i^{(j)} (a_i^{(j)} + b_i^{(j)}) \right|}{\sum_{q=1}^n \sum_{j=1}^{m-1} \mu_j \left| \eta_q^{(j)} (a_q^{(j)} + b_q^{(j)}) \right|}, \quad \sum_{i=1}^n \rho_i = 1.$$

2.3 FAMOUS software

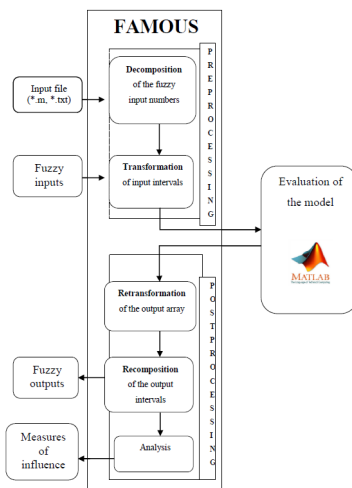


Figure 1. Structure of the software FAMOUS [6].

In this study, a software package by [6] called Fuzzy Arithmetical Modeling of Uncertain Systems (FAMOUS) (see Figure 1) is used to simulate and analyze the model of the boiler and steam turbine. FAMOUS is a toolbox that provides a framework to handle parametric uncertainties in systems analysis. It uses the transformation method in Section 2.1–2.2 to compute solutions for a given system.

3 Application to a Steam Turbine System

The equation (3.1) describes the state, and equation (3.2) describes the output of the steam turbine. The state variables of the steam turbine model are steam energy per unit volume (X_o'), outlet steam flow (w_{ou}') and steam density (ρ_{ou}'). The output variables are outlet steam density (p_{ou}), outlet steam temperature (T_{ou}) and mechanical power development (P) [12]. Thus, the state space equation is given as in [11]:

$$\begin{bmatrix} X_o' \\ w_{ou}' \\ \rho_{ou}' \end{bmatrix} = \begin{bmatrix} 0 & -h_o/v & 0 \\ -\frac{C}{h_o\tau_s} & 0 & 0 \\ 0 & 0 & -\frac{C}{rV} \end{bmatrix} \begin{bmatrix} X_o \\ w_{ou} \\ \rho_{ou} \end{bmatrix} + \begin{bmatrix} \frac{h_o}{v} & -\frac{w_{in}}{v} \cdot \frac{c_p}{R\rho_o} \cdot \frac{T_{in}}{T_{ou}} & \frac{w_{in}c_p}{v} \\ 1/\tau_s & 0 & 0 \\ 1/v & 0 & 0 \end{bmatrix} \begin{bmatrix} w_{in} \\ P_{in} \\ T_{in} \end{bmatrix}, \tag{3.1}$$

$$\begin{bmatrix} p_{ou} \\ T_{ou} \\ P \end{bmatrix} = \begin{bmatrix} rRT_o/h_o & 0 & 0 \\ \frac{\eta_\infty(\frac{\gamma-1}{\gamma})}{r} & 0 & \frac{(c_pT_{ou}-h_{ou})r}{rc_p\rho_o} \eta_\infty(\frac{\gamma-1}{\gamma}) \\ 0 & \eta_{c_p}T_o(r(\frac{R}{c_p})-1) & 0 \end{bmatrix} \begin{bmatrix} X_o \\ w_{ou} \\ \rho_{ou} \end{bmatrix}, \tag{3.2}$$

where

$$C = A\sqrt{2\eta_\infty m\rho_o \left(r^{(\frac{2}{m})} - r^{(\frac{m+1}{m})} \right) / ((m-1)p_o)}.$$

The reduction method is applied to the steam turbine in order to reduced computing time. By solving the ordinary differential equations, the output P_{ou} is selected from equation (3.2)

$$P_{ou} = rRT_oX_o/h_o. \tag{3.3}$$

From equation (3.3), X_o is identified as

$$\begin{aligned} X_o' &= -\frac{h_o}{v}w_{ou} + \frac{h_o}{v}w_{in} - \frac{w_{in}}{v} \frac{c_p}{R\rho_o} \frac{T_{in}}{T_{ou}}P_{in} + \frac{w_{in}c_p}{v}T_{in}, \\ \int X_o' &= \int -\frac{h_o}{v}w_{ou} + \frac{h_o}{v}w_{in} - \frac{w_{in}}{v} \frac{c_p}{R\rho_o} \frac{T_{in}}{T_{ou}}P_{in} + \frac{w_{in}c_p}{v}T_{in}dt, \\ X_o &= -\frac{h_o}{v}w_{ou}(t) + \frac{h_o}{v}w_{in}(t) - \frac{w_{in}}{v} \frac{c_p}{R\rho_o} \frac{T_{in}}{T_{ou}}P_{in}(t) + \frac{w_{in}c_p}{v}T_{in}(t) + c. \end{aligned} \tag{3.4}$$

Substituting (3.4) into (3.3) gives

$$P_{ou} = \frac{rRT_o}{h_o} \left[-\frac{h_o}{v} w_{ou}(t) + \frac{h_o}{v} w_{in}(t) - \frac{w_{in}}{v} \frac{c_p}{R\rho_o} \frac{T_{in}}{T_{ou}} P_{in}(t) + \frac{w_{in}c_p}{v} T_{in}(t) + c \right].$$

By using FAMOUS, the input parameters of the steam turbine system (HP, IP and LP) are expressed by the fuzzy model parameters p_1 (Inlet steam flow from boiler superheat section), p_2 (Inlet steam pressure), p_3 (Inlet steam flow temperature), p_4 (Inlet steam flow enthalpy) and p_5 (Inlet steam flow density). The membership functions are derived from quasi-Gaussian distributions, as illustrated in Figures 2–4.

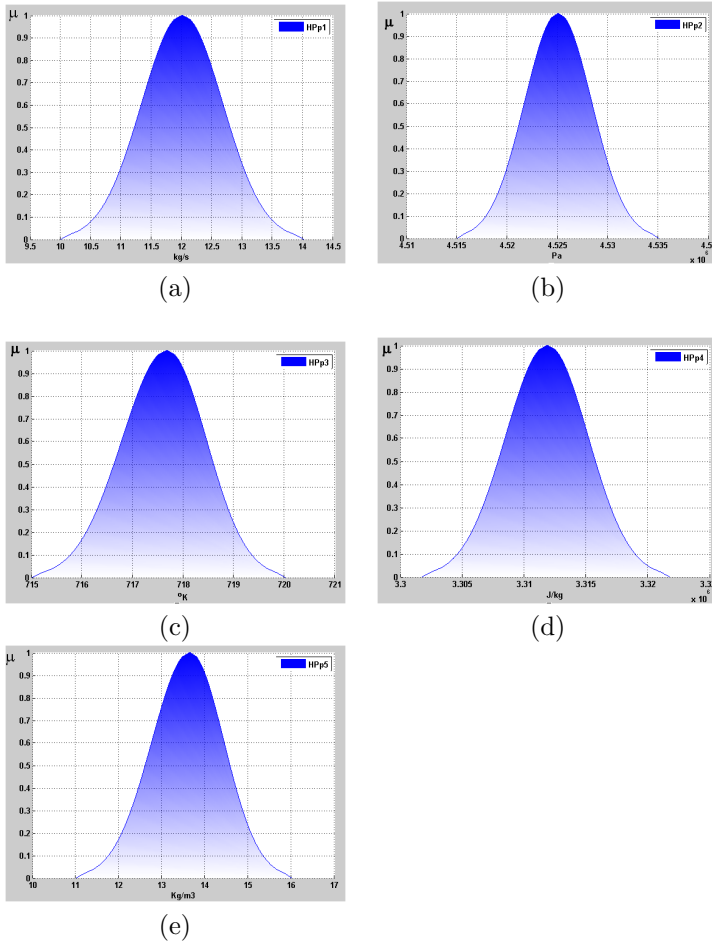


Figure 2. Fuzzy input parameters of high-pressure section of a steam turbine system (a) p_1 (Inlet steam flow from boiler superheat section), (b) p_2 (Inlet steam pressure), (c) p_3 (Inlet steam flow temperature), (d) p_4 (Inlet steam flow enthalpy) and (e) p_5 (Inlet steam flow density).

The output variable $\tilde{q} = P_{ou}$ is obtained for each section of the steam turbine. Figure 5 shows the fuzzy output P_{ou} for HP, IP and LP sections of

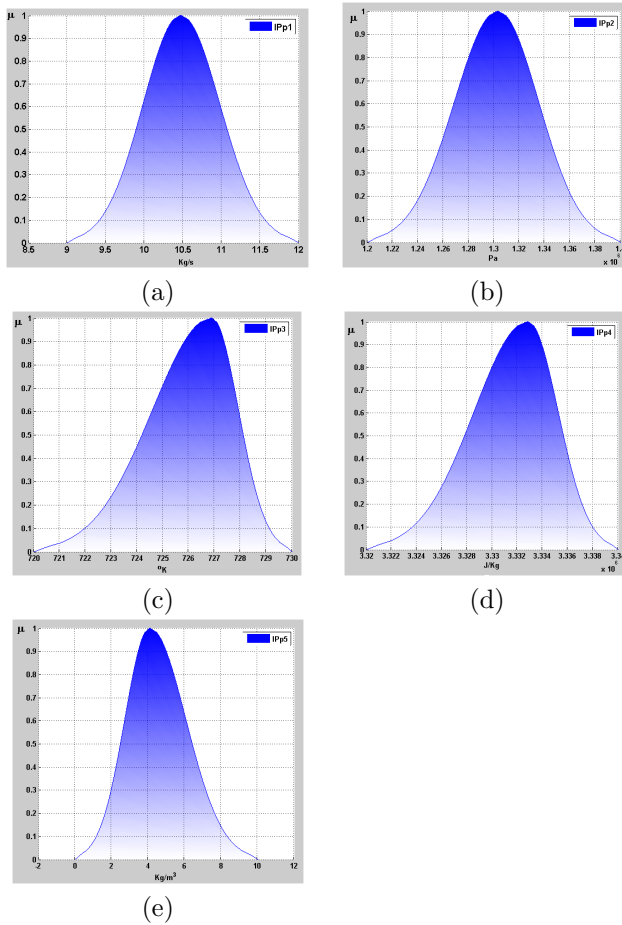


Figure 3. Fuzzy input parameters of intermediate-pressure section of a steam turbine system (a) p_1 (Inlet steam flow from boiler superheat section), (b) p_2 (Inlet steam pressure), (c) p_3 (Inlet steam flow temperature), (d) p_4 (Inlet steam flow enthalpy) and (e) p_5 (Inlet steam flow density).

the system. The results do not show significant variations when compared to the original symmetric quasi-Gaussian distribution, namely p_1, p_2, p_3, p_4 and p_5 of the steam turbine.

Given in Figure 6, the overall uncertainty of the model output in high pressure section is induced by the uncertainty in ρ_2 (Inlet steam pressure) with a degree of influence of 49%. The degree of output uncertainty influenced by ρ_1 is only 32% and for ρ_3 is just 18%. The rest, ρ_4 and ρ_5 have such low percentages of influence and are considered negligible.

As for the intermediate-pressure section: the uncertainty from ρ_2 shows high influence on the overall uncertainty of the system, at 47%. The uncertainties of ρ_1 and ρ_3 show low impact, with 34% and 18% respectively. The influence of parameters ρ_4 and ρ_5 are considered negligible.

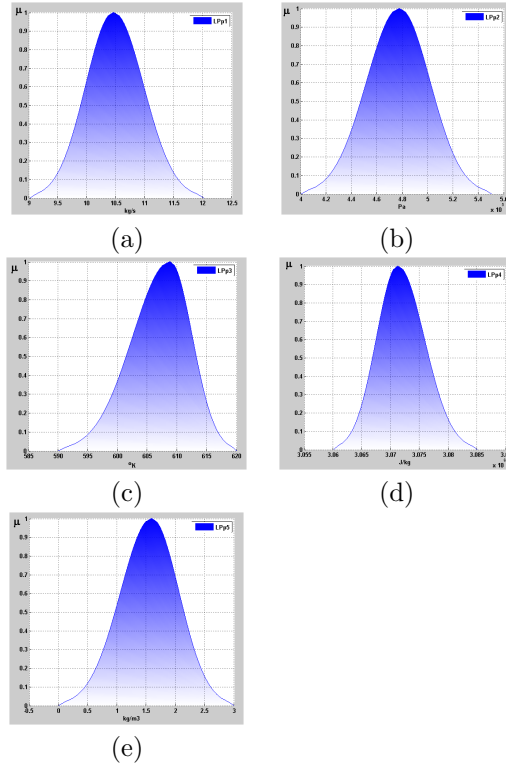


Figure 4. Fuzzy input parameters of low-pressure section of a steam turbine system (a) ρ_1 (Inlet steam flow from boiler superheat section), (b) ρ_2 (Inlet steam pressure), (c) ρ_3 (Inlet steam flow temperature), (d) ρ_4 (Inlet steam flow enthalpy) and (e) ρ_5 (Inlet steam flow density).

The uncertain parameter of the low-pressure section shows ρ_2 has moderate impact of 55%. The uncertainties of ρ_1 and ρ_3 show low influences of 31% and 14% respectively. The parameters ρ_4 and ρ_5 are negligible.

A conclusion that can be made is the influence of inlet steam pressure ρ_2 confined the high influence measure for each section in the steam turbine system. Following the influence measure of inlet steam flow from the boiler superheat section ρ_1 and inlet steam flow temperature ρ_3 . However, the inlet steam flow enthalpy ρ_4 and inlet steam flow density ρ_5 show only a small influence and can be regarded as negligible.

4 Application to a furnace system

A furnace by [9] is considered a complex an uncertain system because it exhibits systemic variability depending on the quantity of inputs. The model’s inputs are identified as fuel, air and exhaust gas flows. The following are the state

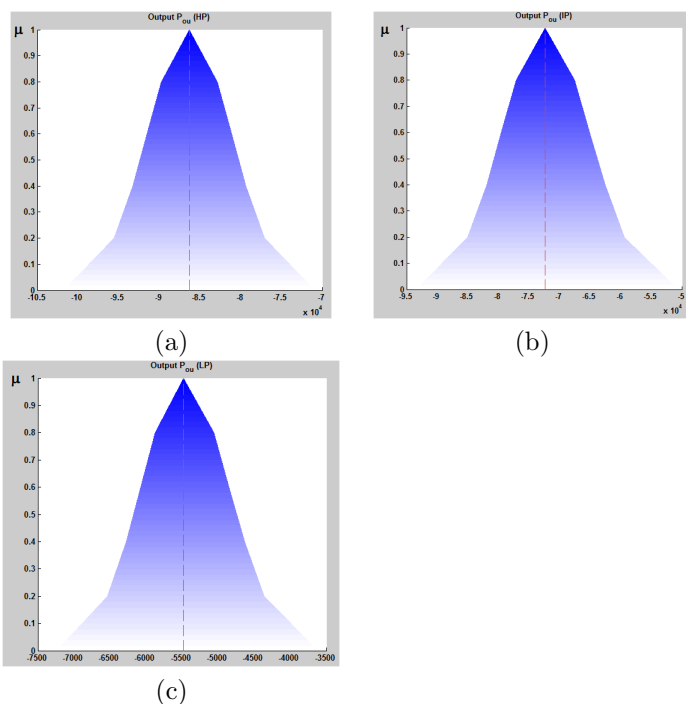


Figure 5. Fuzzy Output P_{ou} of a Steam Turbine System (a) high-pressure, (b) intermediate-pressure, (c) low-pressure.

space equations [9] for the furnace.

$$\begin{aligned} \begin{bmatrix} \dot{\rho}_{EG} \\ X_{F1} \end{bmatrix} &= \begin{bmatrix} -\frac{k_f R_{EG} T_g}{V_F} & 0 \\ -\frac{(R_{EG} T_g)(Q_{ir} + Q_{is})}{V_F P_G} & -\frac{k_f R_{EG} T_g R_S (1 + \frac{Y}{100})}{V_F} \end{bmatrix} \begin{pmatrix} \rho_{EG} \\ X_{F1} \end{pmatrix} \\ &+ \begin{bmatrix} \frac{1}{V_F} & \frac{1}{V_F} & \frac{1}{V_F} \\ \frac{C_F}{V_F} & \frac{h_A}{V_F} & \frac{h_G}{V_F} \end{bmatrix} \begin{pmatrix} W_F \\ W_A \\ W_G \end{pmatrix}, \end{aligned} \tag{4.1}$$

$$\begin{aligned} \begin{bmatrix} Q_{ir} \\ Q_{is} \\ Q_{rs} \\ Q_{es} \\ P_G \end{bmatrix} &= \begin{bmatrix} \left(\frac{\theta}{1-\theta}\right) (Q_{gs} + w_{EG} c_{gs} T_{gr}) \frac{R_{EG} T_g k_f}{w_{EG}} & -\left(\frac{\theta}{1-\theta}\right) \frac{k_f R_{EG} C_{gs} T_g^2}{h_{EG}} \\ (Q_{gs} + w_{EG} c_{gs} T_{gr}) \frac{R_{EG} T_g k_f}{w_{EG}} & -\frac{k_f R_{EG} C_{gs} T_g^2}{h_{EG}} \\ k_f R_{EG} T_g c_{gs} (T_{gr} - T_{ge}) & 0 \\ k_f R_{EG} T_g C_{gs} (T_{ge} - T_{gl}) & 0 \\ R_{EG} T_g & 0 \end{bmatrix} \\ &\times \begin{pmatrix} \rho_{EG} \\ X_{F1} \end{pmatrix}. \end{aligned} \tag{4.2}$$

Equation (4.1) represents the state and equation (4.2) is the output of the furnace. The state parameters of the furnace are ρ_{EG} (the density of exhaust gas from the boiler) and X_{F1} (the enthalpy and density of exhaust gas from

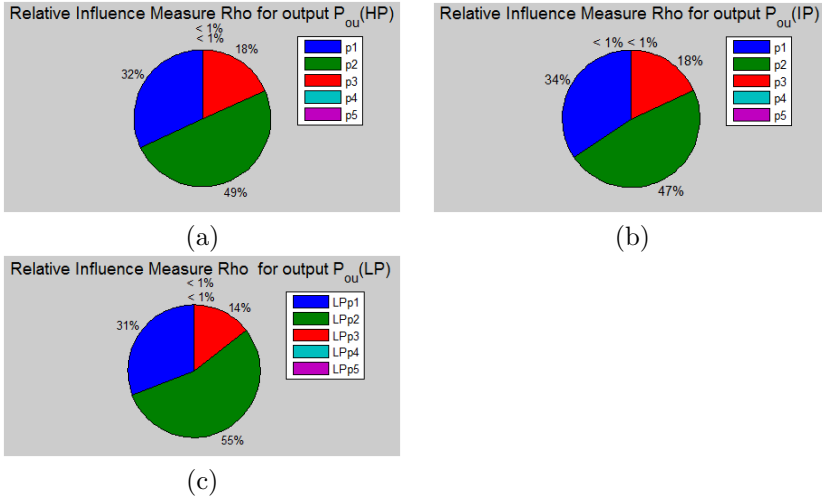


Figure 6. Relative influence measure ρ_i for output P_{ou} in (a) high pressure, (b) intermediate pressure and (c) low pressure section of a steam turbine system.

the boiler). The five output parameters are Q_{ir} (heat transferred to the risers in J/s), Q_{is} (heat transferred to the superheater in J/s), Q_{rs} (heat transferred to the reheater in J/s), Q_{es} (heat transferred to the economizer in J/s) and P_G (furnace air pressure in Pa). The selected Q_{ir} from equation (4.2) is then solved by using the method of integrating factor:

$$Q_{ir} = \left[\frac{\theta T_g R_{EG} K_F}{(1 - \theta) W_{EG}} (Q_{gs} + W_{EG} C_{gs} T_{gr}) \right] \rho_{EG} - \left[\frac{\theta K_F R_{EG} T_g^2 C_{gs}}{(1 - \theta) h_{EG}} \right] X_{F1}, \quad (4.3)$$

$$\rho_{EG} = \frac{W_F + W_A + W_G}{k_f R_{EG} T_g} + C e^{-\frac{K_F R_{EG} T_g}{V} t} \quad (4.4)$$

and in similar way for X_{F1} :

$$X_{F1} = \frac{-(Q_{ir} + Q_{is}) R_{EG} T_g \rho_{EG} / P_G + C_F W_F + h_A W_A + h_G W_G}{k_f R_{EG} T_g R_S (1 + Y/100)} + C e^{-\frac{k_f R_{EG} T_g R_S (1 + Y/100)}{V_F} t}. \quad (4.5)$$

Substitute equations (4.4) and (4.5) into equation (4.3)

$$Q_{ir} = \left(\frac{\theta}{1 - \theta} \right) (Q_{gs} + w_{EG} c_{gs} T_{gr}) \frac{R_{EG} T_g k_f}{w_{EG}} \left(\frac{W_F + W_A + W_G}{k_f R_{EG} T_g} + C e^{-\frac{K_F R_{EG} T_g}{V} t} \right) - \left(\frac{\theta}{1 - \theta} \right) \frac{k_f R_{EG} C_{gs} T_g^2}{h_{EG}} \left(C e^{-\frac{k_f R_{EG} T_g R_S (1 + Y/100)}{V_F} t} + \frac{-\widetilde{W} + C_F W_F + h_A W_A + h_G W_G}{k_f R_{EG} T_g R_S (1 + Y/100)} \right),$$

where

$$\widetilde{W} = \frac{(Q_{ir} + Q_{is})R_{EG}T_g}{P_G} \left(\frac{w_F + w_A + w_G}{k_f R_{EG} T_g} + C e^{-\frac{K_F R_{EG} T_g}{V}} t \right).$$

The input parameters for the furnace model are expressed by fuzzy numbers, namely $p_1 = W_F$, $p_2 = W_A$, $p_3 = W_G$, $p_4 = h_G$ and $p_5 = h_A$ as illustrate in Figure 7.

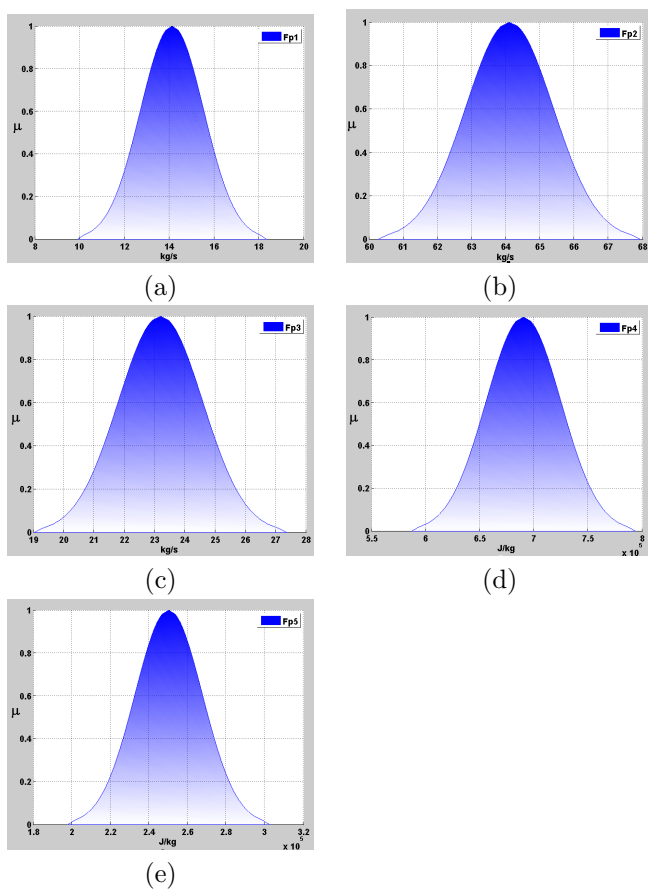


Figure 7. Fuzzy input parameters of a furnace system (a) $p_1 = W_F$, (b) $p_2 = W_A$, (c) $p_3 = W_G$, (d) $p_4 = h_G$ and (e) $p_5 = h_A$

Figure 8(a) shows the fuzzy value output for Q_{ir} , we do not see significant variation in distribution shapes when compared to the original symmetric quasi-Gaussian distribution of the uncertain parameters p_1, p_2, p_3, p_4 and p_5 . The parameters ρ_i , $i = 1, 2, 3, 4, 5$, exhibit non-zero values of influences. Figure 8(b) summarizes the relative influences of input parameters of the furnace system. Only ρ_1 gives a moderate influence to the system. The parameter ρ_2 shows low impact on the system. The parameters ρ_3, ρ_4 and ρ_5 are negligible.

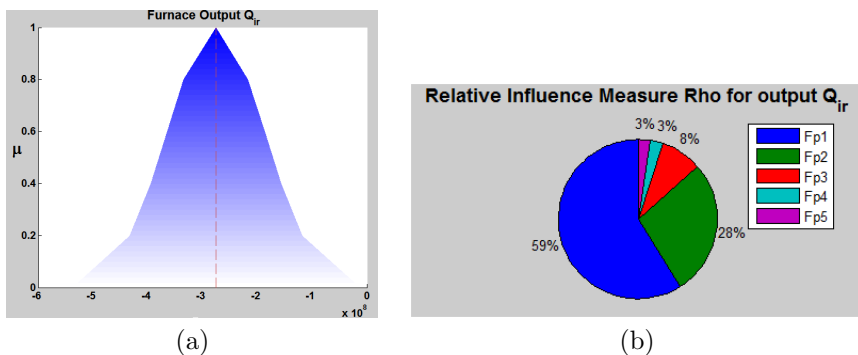


Figure 8. Results for the furnace system: (a) fuzzy output Q_{ir} of furnace system, (b) relative influence measure ρ_i for output Q_{ir} .

5 Application to a reheater system

A reheater is an important heat exchange component in a high-capacity power plant. The following are the state space equations for a reheater system by [10] of a combined-cycle power plant:

$$\begin{bmatrix} \dot{T}_{rh} \\ \dot{X}_{rh} \end{bmatrix} = \begin{bmatrix} -\frac{K_{rh}W_{ri}^{0.8}}{M_r C_{rh}} & 0 \\ \frac{K_{rh}W_{ri}^{0.8}}{V_{rh}} & -\frac{W_{ro}}{V_{rh}\rho_{rh}} \end{bmatrix} \begin{pmatrix} T_{rh} \\ X_{rh} \end{pmatrix} + \begin{bmatrix} \frac{1}{M_r C_{rh}} & 0 & \frac{K_{rh}T_r}{M_r C_{rh}W_{ri}^{0.2}} \\ 0 & \frac{W_{ri}}{V_{rh}} & -\frac{K_{rh}T_r}{V_{rh}W_{ri}^{0.2}} \end{bmatrix} \begin{pmatrix} Q_{rs} \\ h_{ri} \\ W_{ri} \end{pmatrix}, \tag{5.1}$$

$$\begin{bmatrix} P_{ro} \\ T_r \end{bmatrix} = \begin{bmatrix} 0 & R_r \left[\frac{h_{ro} - h_{ref} + C_{pr}T_{ref}}{h_{ro}C_{pr}} \right] \\ 1 & 0 \end{bmatrix} \begin{pmatrix} T_{rh} \\ X_{rh} \end{pmatrix}. \tag{5.2}$$

Equation (5.1) represents the state and equation (5.2) is the output of the reheater. The state parameters of the reheater model consists of T_{rh} (reheater metal tube temperature) and X_{rh} (specific enthalpy of outlet steam and steam density). The two output parameters are P_{ro} (outlet steam pressure) and T_r (reheated steam temperature). For this work, reduction of the reheater model involves selecting the output parameter T_r from Equation (5.2) by using integrating factor

$$P_{ro} = R_r \left[\frac{h_{ro} - h_{ref} + C_{pr}T_{ref}}{h_{ro}C_{pr}} \right] X_{RH}. \tag{5.3}$$

From Equation (5.1), X_{RH} is deduced from ordinary equation

$$\frac{dX_{RH}}{dt} = \frac{K_{rh}W_{ri}^{0.8}}{V_{rh}}T_{rh} - \frac{W_{ro}}{V_{rh}\rho_{rh}}X_{RH} - \frac{W_{ri}}{V_{rh}}h_{ri} - \frac{K_{rh}T_r}{V_{rh}W_{ri}^{0.2}}W_{ri},$$

After simple computations we get:

$$X_{RH} = \frac{K_{rh}W_{ri}^{0.8}T_{rh} + W_{ri} h_{ri} - \frac{K_{rh}T_r}{W_{ri}^{0.2}}W_{ri}}{\frac{W_{ro}}{\rho_{rh}}} + Ce^{-\frac{W_{ro}}{V_{rh}\rho_{rh}}t}. \tag{5.4}$$

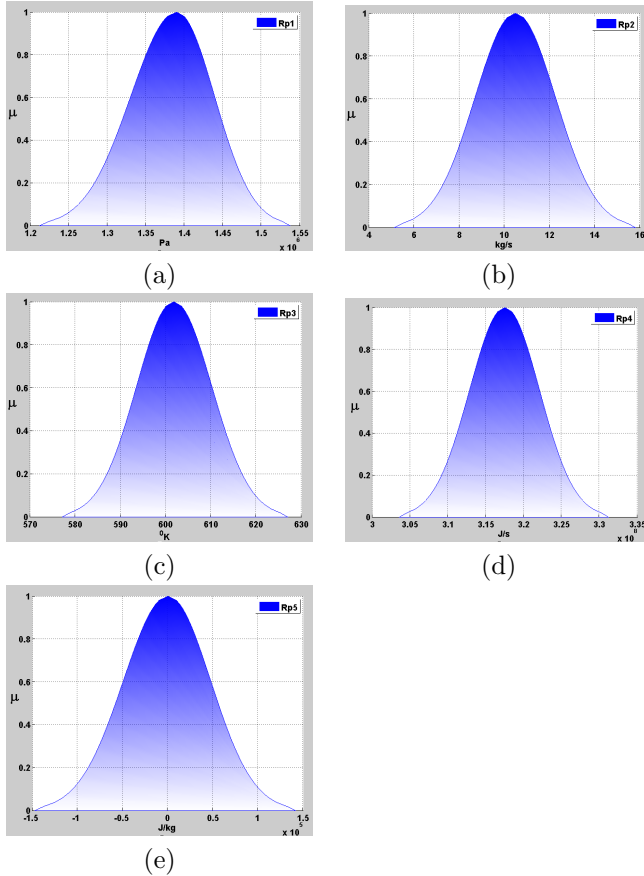


Figure 9. Fuzzy input parameters of reheat system (a) $p_1 = P_{ri}$, (b) $p_2 = W_{ri}$, (c) $p_3 = T_{ri}$, (d) $p_4 = Q_{rs}$ and (e) $p_5 = h_{ri}$

Next, the model parameter of T_{rh} is determined from the following equation

$$\frac{dT_{rh}}{dt} = -\frac{K_{rh}W_{ri}^{0.8}}{M_r C_{rh}}T_{rh} + \frac{1}{M_r C_{rh}}Q_{rs} + \frac{K_{rh}T_r}{M_r C_{rh}W_{ri}^{0.2}}W_{ri},$$

after simple computations we get:

$$T_{rh} = \frac{Q_{rs} + \frac{K_{rh}T_r}{W_{ri}^{0.2}}W_{ri}}{K_{rh}W_{ri}^{0.8}} + Ce^{-\frac{K_{rh}W_{ri}^{0.8}}{M_r C_{rh}}t}. \tag{5.5}$$

Substitute equation (5.4) and (5.5) into equation (5.3) gives

$$P_{ro} = R_r \left[\frac{h_{ro} - h_{ref} + C_{pr}T_{ref}}{h_{ro}C_{pr}} \right] \times \left(\frac{\rho_{rh}Q_{rs}}{W_{ro}} + \frac{\rho_{rh}W_{ri}h_{ri}}{W_{ro}} + \frac{\rho_{rh}K_{rh}W_{ri}^{0.8}Ce^{-\frac{W_{ro}}{v_{rh}\rho_{rh}}t}}{W_{ro}} + Ce^{-\frac{K_{rh}W_{ri}^{0.8}}{M_r C_{rh}}t} \right).$$

The input parameters for the reheater model are expressed by fuzzy numbers p_1, p_2, p_3, p_4 and p_5 as illustrated in Figure 9.

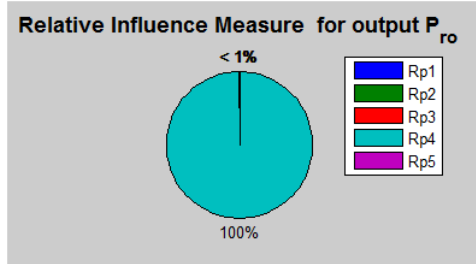


Figure 10. Relative influence measure ρ_i for output P_{ro} in reheater system.

Regarding the influence of input parameters $\rho_i, i = 1, 2, \dots, 5$, the breakdown in Figure 10 indicates only one out of the five uncertain input parameters exerts influence on the outflow of the reheater. The parameter ρ_4 shows significant influence on the output of the reheater compare to other parameters.

6 Conclusions

The general transformation method is used for steam turbine and boiler systems to analyze and quantify the influences of their input parameters.

Acknowledgements

The authors are thankful to Universiti Teknologi Malaysia for providing the necessary environment, technical support and funding for this research. FRGS. 4F756.

References

- [1] A. Chaibakhsh and A. Ghaffari. Steam turbine model. *Simulation Modelling Practice and Theory*, **16**(9):1145–1162, 2008. <https://doi.org/10.1016/j.simpat.2008.05.017>.
- [2] M. Hanss. The transformation method for the simulation and analysis of systems with uncertain parameters. *Fuzzy Sets and Systems*, **130**(3):277–289, 2002. [https://doi.org/10.1016/S0165-0114\(02\)00045-3](https://doi.org/10.1016/S0165-0114(02)00045-3).
- [3] M. Hanss. *Applied Fuzzy Arithmetic. An Introduction with Engineering*. Springer, Berlin, 2005. <https://doi.org/10.1007/b138914>.

- [4] M. Hanss and O. Nehls. Simulation of the human glucose metabolism using fuzzy arithmetic. In *PeachFuzz 2000. 19th International Conference of the North American Fuzzy Information Processing Society - NAFIPS (Cat. No.00TH8500)*, pp. 201–205, 2000. <https://doi.org/10.1109/NAFIPS.2000.877420>.
- [5] M. Hanss and O. Nehls. Enhanced parameter identification for complex biomedical models on the basis of fuzzy arithmetic. In *Proceedings Joint 9th IFSA World Congress and 20th NAFIPS International Conference (Cat. No. 01TH8569)*, volume 3, pp. 1631–1636, 2001. <https://doi.org/10.1109/NAFIPS.2001.943795>.
- [6] M. Hanss and S. Turrin. A fuzzy-based approach to comprehensive modeling and analysis of systems with epistemic uncertainties. *Structural Safety*, **32**(6):433–441, 2010. <https://doi.org/10.1016/j.strusafe.2010.06.003>.
- [7] N.A. Harish, R. Ismail and T. Ahmad. Graphical representation of fuzzy state space of a boiler system. In *Proc. of the 11th WSEAS Int. Conf. on Neural Networks, NN'10, Proceedings of the 11th WSEAS Int. Conf. on Evolutionary Computing, EC'10, Proc. of the 11th WSEAS Int. Conf. on Fuzzy Systems, FS'10*, pp. 99–103, Iasi, Romania, 2010. World Scientific and Engineering Academy and Society (WSEAS) Stevens Point, Wisconsin, USA.
- [8] I.U. Khan, T. Ahmad and N. Maan. Feedback fuzzy state space modeling and optimal production planning for steam turbine of a combined cycle power generation plant. *Research Journal of Applied Science*, **7**(2):100–107, 2012. <https://doi.org/10.3923/rjasci.2012.100.107>.
- [9] W.M. Wan Munirah, T. Ahmad, S. Ahmad and A. Ashaari. Simulation of furnace system with uncertain parameter. *Malaysian Journal of Fundamental and Applied Sciences*, **11**(1):5–9, 2015. <https://doi.org/10.11113/mjfas.v11n1.334>.
- [10] W.M. Wan Munirah, T. Ahmad, A. Ashaari and M. Adib Abdullah. Modeling fuzzy state space of reheater system for simulation and analysis. In *AIP Conference Proceedings*, volume 1605, pp. 488–493, Malaysia, 2014. AIP. <https://doi.org/10.1063/1.4887637>.
- [11] W.M. Wan Munirah, A. Tahir and A. Azmirul. Identifying the uncertain model parameter of a steam turbine system. *Pertanika Journal of Science and Technology*, **25**(2):545–560, 2017.
- [12] A. Ordys, A.W. Pike, M.A. Johnson, R.M. Katebi and M.J. Grimbale. *Modelling and Simulation of Power Generation Plants*. Advances in Industrial Control. Springer-Verlag, London, 1994. <https://doi.org/10.1007/978-1-4471-2114-5>.

Appendix

Parameters of a Steam Turbine System			
P	Parameter	Unit	Definition
High Pressure			
P ₁	W_{in}	kg/s	Inlet steam flow from boiler superheat section
P ₂	P_{in}	Pa	Inlet steam pressure
P ₃	T_{in}	$^{\circ}K$	Inlet steam flow temperature
P ₄	h_{in}	J/kg	Inlet steam flow enthalpy
P ₅	ρ_{in}	Kg/m^3	Inlet steam flow density
Intermediate Pressure			
P ₁	W_{inIP}	kg/s	Inlet steam flow from boilerreheater section
P ₂	P_o	Pa	Inlet steam pressure
P ₃	T_o	$^{\circ}K$	Inlet steam flow temperature
P ₄	h_o	J/kg	Inlet steam flow enthalpy
P ₅	ρ_o	Kg/m^3	Inlet steam flow density
Low Pressure			
P ₁	W_{inLP}	kg/s	Inlet steam flow from IP section
P ₂	P_{inLP}	Pa	Inlet steam pressure
P ₃	T_{inLP}	$^{\circ}K$	Inlet steam flow temperature
P ₄	h_{inLP}	J/kg	Inlet steam flow enthalpy
P ₅	ρ_{inLP}	Kg/m^3	Inlet steam flow density
Parameters of a Furnace System			
P	Parameter	Unit	Definition
P ₁	w_F	kg/s	Fuel flow to the furnace
P ₂	w_A	kg/s	Air flow to the furnace
P ₃	w_G	kg/s	Exhaust gas flow from the gas turbine
P ₄	h_G	J/kg	Enthalpy of exhaust gas from the gas turbine
P ₅	h_A	J/kg	Inlet air enthalpy
P ₆	θ	rad	Tilt angle coefficient
P ₇	T_{st}	$^{\circ}K$	Temperature of superheater metal tubes
P ₈	T_{rh}	$^{\circ}K$	Temperature of reheater metal tubes
P ₉	T_{et}	$^{\circ}K$	Temperature of economizer metal tubes
Parameters of a Reheater System			
P	Parameter	Unit	Definition
P ₁	P_{ri}	Pa	Inlet steam pressure (from the steamturbine)
P ₂	W_{ri}	kg/s	Reheater inlet steam mass flow
P ₃	T_{ri}	$^{\circ}K$	Inlet steam temperature (from the steam turbine)
P ₄	Q_{rs}	J/s	Heat supplied to the reheater (from the steam turbine)
P ₅	h_{ri}	J/kg	Inlet steam specific enthalpy