

MEDIATING EFFECTS OF PERCEIVED USEFULNESS AND TRUST
BETWEEN INDIVIDUAL FACTORS AND INTENTION TO USE E-TRAINING
IN NIGERIAN TECHNOLOGICAL UNIVERSITIES

AHMED UMAR ALKALI

A thesis submitted in fulfilment of the
requirements for the award of the degree of
Doctor of Philosophy (Management)

Faculty of Management
Universiti Teknologi Malaysia

OCTOBER 2017

DEDICATION

By the special grace of Allah, I dedicate this thesis to my lovely mother and father, Alhaji Umar Alkali and Hajiya Hauwa'u Alkali.

ACKNOWLEDGEMENT

I would like to express my gratitude and thank all who helped and supported me during my PhD journey.

First of all, I thank the Almighty ALLAH Subhanahu Wata'ala from the core of my heart for guiding and inspiring me. Indeed, all my achievements in life are due to His Special Grace and Mercy. Alhamdulillah.

I wish to acknowledge the unquantifiable, inputs, guidance, and support of my supervisor, Associate Professor Dr. Nur Naha binti Abu Mansoor, towards making this scholarly work a success. My gratitude goes to my lovely wife Adama and my children Abdallah, Nafisah, and Nana Asma for their love and tremendous support throughout my PhD journey. My special appreciation goes to Professor Dr. Aizzat binti Mohd Nasurdin who was my external examiner. I also want to particularly acknowledge the immense contributions of Professor Dr. Khalil bin Md Nor who served as my internal examiner, Sir I am indeed grateful.

I am sincerely thankful to all my relatives, colleagues, and friends for their prayers, best wishes, support, and encouragement. Last but not the least, I am indebted to Modibbo Adama University of Technology, Yola and TETFUND for supporting my PhD program.

ABSTRACT

Developments in information technology (IT) have offered universities some sophisticated technological tools and innovative training contents that can be used in delivering training to their employees. However, for successful IT integration in training, employees' positive disposition towards the new system is vital. Although factors, including computer/Internet self-efficacy, interactivity, organisational support, perceived usefulness, perceived ease of use and trust have been used in most studies that investigated technology acceptance, little is known about the effects of interactivity and trust on intention to use e-training. Therefore, this study empirically examines the roles of these factors in determining intention to use e-training within the context of Nigerian technological universities using the technology acceptance model (TAM). Data were collected from 301 employees of five technological universities in Nigeria and partial least squares - structural equation modeling (PLS-SEM) was used in the analysis. Findings of the study reveal that interactivity and trust constructs have positively and significantly influenced employees' intention to use e-training systems. Additionally, perceived usefulness and trust are found to have mediated the relationship between individual factors and intention to use e-training. The Importance-Performance Map Analysis (IPMA) result shows that to predict intention to use e-training in Nigerian technological universities, priorities should be accorded to trust and organisational support. Theoretically, the study has contributed to the understanding of factors affecting intention to use e-training demonstrating the applicability as well as effectiveness of interactivity and trust in predicting intention to use e-training. Methodologically, the study has established the relevance of conducting Importance-Performance Map Analysis (IPMA) in examining intention to use e-training. Practically, the study provides new inputs for successful implementation of e-training systems in universities. It is recommended that future studies investigate the influence of other factors such as subjective norm, enjoyment, and appeal on the intention to use e-training.

ABSTRAK

Perkembangan teknologi maklumat (IT) telah menawarkan universiti beberapa alat teknologi yang canggih dan kandungan latihan inovatif yang boleh digunakan dalam menyampaikan latihan kepada pekerja mereka. Walau bagaimanapun, bagi memastikan integrasi IT dalam latihan berjaya, penerimaan positif pekerja terhadap sistem baru adalah penting. Walaupun faktor-faktor efikasi sendiri komputer/Internet, interaktiviti, sokongan organisasi, tanggapan mudah guna, tanggapan kebergunaan dan kepercayaan telah digunakan dalam kebanyakan kajian yang mengkaji penerimaan teknologi, terlalu sedikit yang diketahui tentang kesan interaktiviti dan kepercayaan terhadap niat untuk menggunakan e-latihan. Oleh itu, kajian ini secara empirikal mengkaji peranan faktor-faktor ini dalam menentukan niat untuk menggunakan e-latihan dalam konteks universiti-universiti teknologi di Nigeria dengan menggunakan model penerimaan teknologi (TAM). Data dikumpulkan daripada 301 orang pekerja daripada lima buah universiti teknologi di Nigeria dan Kuasa Dua Terkecil Separa - Model Persamaan Struktur (PLS-SEM) digunakan dalam analisis ini. Penemuan kajian mendedahkan bahawa interaktiviti dan kepercayaan mempengaruhi niat pekerja secara positif dan signifikan untuk menggunakan sistem e-latihan. Tambahan lagi, tanggapan kebergunaan dan kepercayaan didapati dapat mengantara hubungan antara faktor individu dan niat untuk menggunakan e-latihan. Hasil Analisis Data Prestasi Penting (IPMA) juga menunjukkan bahawa untuk meramalkan niat untuk menggunakan e-latihan di universiti-universiti teknologi Nigeria, keutamaan perlu diberikan kepada kepercayaan dan sokongan organisasi. Secara teorinya, kajian ini telah menyumbang kepada pemahaman tentang faktor-faktor yang mempengaruhi niat menggunakan e-latihan yang menunjukkan kebolehgunaan serta keberkesanan interaktiviti dan kepercayaan dalam meramalkan niat untuk menggunakan e-latihan. Secara metodologi, kajian ini telah membuktikan kaitan melaksanakan Analisis Peta Prestasi Penting (IPMA) dalam menilai niat untuk menggunakan e-latihan. Secara praktisnya, kajian ini menyediakan input baru untuk pelaksanaan sistem e-latihan yang berjaya di universiti. Dicadangkan bahawa kajian masa depan menyiasat pengaruh faktor-faktor lain seperti norma subjektif, keseronokan dan rayuan terhadap niat untuk menggunakan e-latihan.

TABLE OF CONTENT

CHAPTER	TITLE	PAGE
	DECLARATION	ii
	DEDICATION	iii
	ACKNOWLEDGEMENT	iv
	ABSTRACT	v
	ABSTRAK	vi
	TABLE OF CONTENT	vii
	LIST OF TABLES	vii
	LIST OF FIGURES	xvii
	LIST OF ABBREVIATIONS	xix
	LIST OF APPENDICES	xxii
1	INTRODUCTION	1
	1.1 Introduction	1
	1.2 Research Background	1
	1.3 Problem Statement	6
	1.4 Research Questions	12
	1.5 Research Objectives	12
	1.6 Significance of the Study	13
	1.6.1 Knowledge contribution	14
	1.6.2 Practice	15

1.6.2.1	Employees	15
1.6.2.2	University management	15
1.6.2.3	Other Stakeholders	16
1.7	Scope and Limitations of the Study	17
1.7.1	Why Nigerian Technological Universities?	18
1.8	Conceptual and Operational Definition of Terms	19
1.8.1	Individual Factors	19
1.8.2	E-training (ET)	20
1.8.3	Intention (INT)	20
1.8.4	Perceived Usefulness (PU)	20
1.8.5	Perceived Ease of Use (PEOU)	21
1.8.6	Computer/Internet Self-Efficacy (CISE)	21
1.8.7	Interactivity (IR)	21
1.8.8	Organisational Support (OS)	22
1.8.9	Trust (TRS)	22
1.9	Structure of this thesis	22
1.10	Summary	23
2	LITERATURE REVIEW	24
2.1	Introduction	24
2.2	Overview of E-Training	24
2.2.1	Definition of Training	25
2.2.2	Definition of E-training	26
2.2.3	E-training Benefits in Organisations	27
2.3	E-training in Nigerian Universities	29
2.3.1	Challenges of E-training Integration in Nigerian Universities	31
2.4	Studies on Factors Determining Technology Acceptance	34
2.4.1	Commonly Used Factors in Technology Acceptance	36

2.4.2	Not Commonly Used Factors in Technology Acceptance	40
2.5	Studies on Factors Determining Intention to Use E-Training	42
2.5.1	Commonly Used Factors in Examining Intention to Use E-training	43
2.5.2	Not Commonly Used Factors in Examining Intention to use E-training	45
2.6	Existing Similarities Between E-training and Other Online-Based Systems	46
2.6.1	Environment	46
2.6.2	Users	47
2.6.3	Uncertainties/Risks	47
2.6.4	Interactivity	48
2.7	Behavioural Intention	49
2.8	Underpinning Theory - Technology Acceptance Model (TAM)	51
2.8.1	Application of the TAM in Studying Intention	53
2.9	Hypotheses Development	54
2.9.1	Relationship between Computer/Internet Self-Efficacy and Intention	55
2.9.2	Relationship between Computer/Internet Self-Efficacy and Perceived Usefulness	56
2.9.3	Relationship between Computer/Internet Self-Efficacy and Trust	57
2.9.4	Relationship between Interactivity and Intention	58
2.9.5	Relationship between Interactivity and Perceived Usefulness	58
2.9.6	Relationship between Interactivity and Trust	59

2.9.7	Relationship between Organisational Support and Intention	60
2.9.8	Relationship between Organisational Support and Perceived Usefulness	61
2.9.9	Relationship between Organisational Support and Trust	62
2.9.10	Relationship between Perceived Ease of Use and Intention	62
2.9.11	Relationship between Perceived Ease of Use and Perceived Usefulness	63
2.9.12	Relationship between Perceived Ease of Use and Trust	64
2.9.13	Relationship between Perceived Usefulness and Intention	65
2.9.14	Relationship between Trust and Intention	66
2.9.15	Relationship between Trust and Perceived Usefulness	66
2.9.16	Mediating Role of Perceived Usefulness between Computer/Internet Self-Efficacy and Intention	67
2.9.17	Mediating Role of Perceived Usefulness between Interactivity and Intention	68
2.9.18	Mediating Role of Perceived Usefulness between Organisational Support and Intention	68
2.9.19	Mediating Role of Perceived Usefulness between Perceived Ease of Use and Intention	69
2.9.20	Mediating Role of Trust between Computer/Internet Self-Efficacy and Intention	70
2.9.21	Mediating Role of Trust between Interactivity and Intention	70

2.9.22	Mediating Role of Trust between Organisational Support and Intention	71
2.9.23	Mediating Role of Trust between Perceived Ease of Use and Intention	72
2.9.24	Mediating Role of Perceived Usefulness between Trust and Intention	72
2.10	Conceptual Framework of the Study	76
2.10.1	Independent variables	76
2.10.2	Perceived Usefulness as a Mediator	77
2.10.3	Trust as a Mediator	79
2.10.4	Dependent Variable	81
2.11	Chapter Summary	82
3	RESEARCH METHODOLOGY	83
3.1	Introduction	83
3.2	Research Philosophy	83
3.2.1	Ontological, Epistemological and Methodological Stand of this Research	84
3.3	Research Design	87
3.4	Study Population	89
3.5	Sample Selection	90
3.6	Instrumentation	92
3.7	Pre-Test	97
3.8	Pilot Study	98
3.9	Data Collection	100
3.10	Data Analysis	101
3.10.1	Structural Equation Modeling (SEM)	101
3.10.2	Partial Least Squares Structural Equation Modeling (PLS-SEM)	102

3.10.2.1	Choosing between PLS and CB-SEM	103
3.10.3	The Stages in Data Analysis	105
3.10.3.1	Statistical Methods, Tests, and Software for Data Analysis	106
3.10.3.2	Data Screening	107
3.10.3.3	Biases and Multi collinearity	108
3.10.3.4	Descriptive Analysis	110
3.11	Measurement Model	110
3.11.1	Reflective Measurement Model	110
3.11.1.1	Internal Consistency Reliability	111
3.11.1.2	Indicator Reliability	111
3.11.1.3	Convergent Validity	112
3.11.1.4	Discriminant Validity	113
3.11.2	Assessment of Formative Measurement Model	115
3.11.2.1	Convergent Validity	116
3.11.2.2	Collinearity	117
3.11.2.3	Significance and Relevance of formative construct's indicators	118
3.12	Structural Model	122
3.12.1	Assessing for collinearity	123
3.12.1.1	Structural Model Relationships	123
3.12.1.2	Assessing the R^2	124
3.12.1.3	Effect Size f^2	124
3.12.1.4	Predictive Relevance Q^2	125
3.12.2	Mediating Effects	126
3.13	Chapter Summary	130
4	DATA ANALYSIS	131
4.1	Introduction	131
4.2	Data Screening	133

4.2.1	Treatment of Missing Values	133
4.2.2	Outliers	134
4.2.3	Normality	136
4.2.3.1	Skewness and Kurtosis	136
4.2.3.2	Common Method Bias	137
4.2.3.3	Multicollinearity	141
4.3	Descriptive Analysis	144
4.4	Research Model Analysis	146
4.4.1	Analysis of Measurement Model (Reflective)	148
4.4.1.1	Construct Validity - Convergent and Discriminant Validity	148
4.4.1.2	Summary of the First-Order Reflective Measurement Model	157
4.4.2	Formative-Reflective Second-Order Measurement Model	161
4.4.2.1	Formative construct's convergent validity	161
4.4.2.2	Collinearity assessment	162
4.4.2.3	Assessing the Significance and Relevance of Formative Indicators	164
4.4.2.4	Summary of the Formative Construct Measurement Model	166
4.5	Assessing the Structural Model	167
4.5.1	Collinearity Assessment	168
4.5.2	Assessing Significance of Structural Model Path Coefficients	169
4.5.3	R Square (R^2)	173
4.5.4	f^2 - Effect size to R^2	175
4.5.5	Q^2 - Predictive Relevance	176
4.5.6	q^2 - Effect Size of q^2	177

4.6	Hypotheses Testing	178
4.7	Mediation	181
4.8	Importance-Performance Map Analysis (IPMA)	184
4.9	Chapter Summary	185
5	DISCUSSIONS AND CONCLUSION	187
5.1	Introduction	187
5.2	Discussions	187
5.2.1	Research Question 1:	188
5.2.2	Research Question 2:	191
5.2.3	Research Question 3:	193
5.3	Knowledge and Practical Implications	195
5.3.1	Knowledge Implication	196
5.3.2	Practical Implication	197
5.3.3	Limitations and Suggestions for Future Research	199
5.3.4	Conclusion	200
5.3.5	Chapter Summary	201
	REFERENCES	202
	Appendices A-O	237-270

LIST OF TABLES

TABLE NO.	TITLE	PAGE
1.1	List of National Technological Universities in Nigeria as at 2015	17
2.1	Technologies Used in Nigerian Public Universities	30
2.2	Summary of Challenges of E-training in Nigerian Public Universities	33
2.3	Summary of Hypotheses	73
3.1	Population and sample of the study	92
3.2	Measures of Constructs and Their Sources	95
3.3	Reliability results for pilot test	100
3.4	Situations for Using PLS or CB-SEM	103
3.5	Statistical tests and Methods	107
3.6	Summary of indices for measurement model analysis using PLS-SEM	115
3.7	Summary of Guidelines for Assessing Formative Measurement Model	121
3.8	Indices for Structural Model Analysis using PLS-SEM	129
4.1	Proposed Stages of Data Analysis	132
4.2	Summary of Responses	134
4.3	Identified outliers in the data set	135
4.4	KMO and Bartlett's Test	138
4.5	Total Variance Explained	138
4.6	Nonlinearity Assessment of the Independent Variables	143
4.7	Respondents Demographics	144
4.8	Items Loadings	149

4.9	Results of Cronbach's Alpha, Composite Reliability and AVE	151
4.10	Items Cross loadings	153
4.11	Discriminant Validity Using Fornell and Lacker's (1981) Criterion	155
4.12	HTMT Criterion Results	156
4.13	First-Order Reflective Measurement Model Results	157
4.14	Summary of First-Order Measurement Model Results	159
4.15	Outer VIF values	163
4.16	Results of the Significance and Relevance of Formative Indicators	165
4.17	Measurement Properties for Formative Construct	167
4.18	Collinearity Statistics	169
4.19	Significance of path coefficients	172
4.20	R-Square (R^2) Values	175
4.21	Results of the Effect Size (f^2).	176
4.22	Results of Q^2	177
4.23	Results of q^2	178
4.24	Results of Hypotheses Testing	180
4.25	Mediation Test Results	182
4.26	Extent of Mediation of Perceived Usefulness and Trust	183
4.27	Importance-Performance Map Analysis (IPMA) results	185

LIST OF FIGURES

FIGURE NO.	TITLE	PAGE
1.1	Thesis Structure	23
2.1	Theory of Reasoned Action (TRA) (Fishbein and Ajzen, 1975)	52
2.2	Original Technology Acceptance Model (Davis, 1986)	52
2.3	TAM (Davis et al., 1989)	53
2.4	Hypotheses of the Study	55
2.5	Research Framework for This Study	82
3.1	Categories of Research Paradigms Used in this Thesis	84
3.2	Research Process of this Study	89
3.3	Stages Used in Data Analysis	106
3.4	Deletion and Retaining of Indicators (Hair et al., 2014)	113
3.5	Redundancy Analysis for Convergent Validity Assessment	116
3.6	Collinearity Assessment in Formative Measurement Model (Hair et al., 2014)	118
3.7	Decision-making Process for Keeping or Deleting Formative Indicators (Hair et al., 2014)	120
3.8	Steps for Assessing the Structural Model Using PLS-SEM (Hair et al., 2014)	122
3.9	Mediating Effect (Baron and Kenny, 1986)	127
4.1	Initial Reflective- formative second order hierarchical model	147
4.2	Final First-order reflective measurement model	160
4.3	Redundancy Analysis	162

4.4	Reflective-Formative Second-Order Structural Model	168
4.5	PLS-SEM Algorithm Results of the Structural Model	170
4.6	Bootstrapping Results of the Structural Model	171
4.7	R-squares of all Dependent Variables	174
4.8	Importance-Performance Map	184

LIST OF ABBREVIATIONS

ATBU	-	Abubakar Tafawa Balewa University
CB-SEM	-	Covariance-Based Structural Equation Modeling
CD	-	Compact Disc
CD-ROM	-	Compact Disc, read-only-memory
CFA	-	Confirmatory Factor Analysis
CISE	-	Computer/Internet Self-Efficacy
CR	-	Composite Reliability
DV	-	Dependent Variable
DVD	-	Digital Versatile Disc or Digital Video Disc
E-HRM	-	Electronic Human Resource Management
ET	-	E-Training
ETF	-	Education Tax Fund
FMoE	-	Federal Ministry of Education
FUTA	-	Federal University of Technology Akure
FUTM	-	Federal University of Technology Minna
FUTO	-	Federal University of Technology Owerri
HRM	-	Human Resource Management
ICT	-	Information and Communication Technology
IMPA	-	Importance-Performance Matrix Analysis
INT	-	Intention

IR	-	Interaction
IS	-	Information System
IT	-	Information Technology
IV	-	Independent Variable
KMO	-	Kaiser-Meyer-Olkin
LMS	-	Learning Management System
MAUTECH	-	Modibbo Adama University of Technology
MBA	-	Master of Business Administration
MIS	-	Management Information System
ML	-	Maximum Likelihood
MOOC	-	Massive open online course
MV	-	Mediating Variable
NITDA	-	National Information Technology Development Agency
NUC	-	National Universities Commission
OLS	-	Ordinary Least Squares
OS	-	Organisational Support
PDA	-	Personal Digital Assistant
PE	-	Perceived Enjoyment
PEOU	-	Perceived Ease of Use
PLS	-	Partial Least Squares
PLS-SEM	-	Partial Least Squares Structural Equation Modeling
PU	-	Perceived Usefulness
SEM	-	Structural Equation Modeling
SL	-	Second Life
SN	-	Subjective Norm
TAM	-	Technology Acceptance Model

TETFUND	-	Tertiary Education Trust Fund
TPB	-	Theory of Planned Behaviour
TRA	-	Theory of Reason Action
TRA	-	Theory of Reason Action
TRS	-	Trust
UTAUT	-	Unified Theory of Acceptance of the Use of Technology
VIF	-	Variance Inflation Factors
VLE	-	Virtual Learning Environment

LIST OF APPENDICES

APPENDIX	TITLE	PAGE
A	Technology Acceptance Factors	237
B	Intention to Use E-training Factors	246
C	Krejcie and Morgan Sampling Table	251
D	Research Questionnaire	252
E	Results of Skewness and Kurtosis	257
F	KMO and Bartlett's Test	259
G	Total Variance Explained	260
H	Scree Plot	261
I	Rotated Component Matrix	262
J	Initial Items Loadings	263
K	HTMT Inference Confidence Level	265
L	HTMT Inference Results	267
M	Formative Items Outer Loadings	268
N	Outer Weight of Formative Construct	269
O	List of Publications	270

CHAPTER 1

INTRODUCTION

1.1 Introduction

The goal of this study is to determine the mediating effects of perceived usefulness and trust in the relationship between individual factors and intention to use e-training system in Nigerian technological universities. This chapter therefore, unveils the outline of this research. In particular, it provides a broad description of the research background, the problem of the study, research questions and objectives, scope and limitations, and the significance of the study.

1.2 Research Background

Putting in place a competent workforce is the desire of every modern organisation. In today's knowledge based economy, the influence of an organisation's human resource cannot be overemphasised as its success largely hinges on the performance of its human resource management (HRM) (Masum et al., 2015). To have competitive advantage and comply with the demands of the emerging global labour market infrastructure, organisations must create a mechanism that ensures the availability of a workforce with the prerequisite knowledge, skills, and ability to

effectively deliver within the existing constraints of global competition. According to Koontz and Weihrich (2006), this can be achieved through the provision of extensive training that provides employees with enhanced knowledge of the new socio-economic and technological changes in the contemporary world of competition.

Previous studies have demonstrated the positive effects of training on quality of workers knowledge, skills, capability, and higher employee job performance (Guest, 1997). Likewise, training was established to have improved employees' productivity, compensation, and eagerness to work, while it also helps organisations to increase productivity (Dermol and Čater, 2013). Training has also been associated with improving employees skills which has led to job satisfaction (Arslan and Uzaslan, 2017). However, the traditional face to face method of delivering training has been criticised by some researchers as being inflexible (Thelen et al., 2011) and expensive, considering the costs incur for training venue, tuition, travel, meals and materials (Bajracharya, 2017). The existence of these weaknesses has led to the demand for other alternative training methods. This saw many organisations adopting web-based forms of learning to provide employee training (Kamal et al. (2016).

It is noteworthy to state here that developments in information and communication technology (ICT) have provided organisations with some sophisticated technological tools and innovative training contents that can be used in delivering training to employees. This concept is known as 'e-training'. E-training refers to the training provided by organisations to their employees using the Internet/Intranet, computers, recorded past trainings on CD-ROM or flash drive, and other electronic media to improve their knowledge and skills for better performance. Indicating the increase in the use of e-training, a study has reported that in past decade, organisations have regularly used technology in delivering training programs to employees (Ozturan and Kutlu, 2010). The rise could be attributed to the benefits organisations drive from its use. For instance, Strother (2002) has reported that Rockwell Collins brought down its total training costs by 40% through the conversion of just 25% of its training contents and making it accessible online. Other reported

outcomes of e-training include knowledge development, job satisfaction, and work performance (Byun and Mills, 2011).

Others researchers have reported saving costs, flexibility in training delivery, employee self-paced learning, and availability of lifelong use of training resources within the company as benefits of e-training (Chao and Chen, 2009; Zainab et al., 2015; Amara and Atia, 2016). Meanwhile, e-training is not without weaknesses. The inherent weaknesses of e-training include lack of physical human interaction, eye contact, and the difficulty of some forms of training to be replaced by information technology (IT) (Singh and Singh, 2015). However, in spite of these weaknesses, there is an increasing organisational demand for web-based forms of learning to provide employee training (Kamal et al. (2016).

Nigerian technological universities are key for social, economic, and technological development of the country. Operating in today's knowledge based economy, where education is no longer constrained by boundaries, a competent, highly skillful, and experienced workforce becomes indispensable to these universities. However, despite the huge budgetary allocations these universities enjoyed in the past, they are still battling with large staff that are usually redundant, ageing, untrained, and working in a poorly provided infrastructure (El-Rufai, 2011). This could be responsible for the weakening level of job performance among employees of these universities in Nigeria (Ogbulafor, 2011). The existence of these problems affect the efficiency of the universities employees which will require new thinking and approach to solve.

As earlier pointed out, providing extensive and timely training will enhance the competence of the university employees. However, with low funding, the universities are in a state that will make sustaining the present traditional face to face form of training with large number of employees that need training, coupled with differing work schedules in the universities (Umeagukwu and Ngozi, 2014; Ahmad et al., 2014), remains a serious challenge that must to be overcome by the Nigerian technological universities. Among the existing weaknesses of the traditional face to

face method of training used in these universities is that once an initial training is completed, employees would have limited access to the trainer, and will individually have to keep training documents in case there is need to refer to the training contents. On the alternative, the employees could opt to ask other colleagues questions when uncertain, which could lead to inconsistencies in jobs especially when the staff consulted failed to provide the correct answers.

Moreover, the university employees do have diverse responsibilities, such as teaching, supervision, customer service, information technology support (IT), safety and security, accounts and audit, and student management to discharge daily. Providing training to employees in these job categories could be very difficult and costly especially when using the traditional training method. Could the integration of e-training be necessary and timely to Nigerian technological universities, especially in the face of their present challenges?

If the universities are to address the above-mentioned training related problems through technology integration in their training activities, the universities will have to contain with the existing constraints which may affect successful integration of e-training. Presently, there are challenges that can affect successful implementation of e-training in Nigerian technological universities. Some of these challenges are organisational in nature while others are individual. The organisational challenges include low funding from the government (Nwogo, 2009; Umeagukwu and Ngozi, 2014), inadequate ICT facilities (Baro and Zuokemefa, 2011; Aworanti, 2016), lack of technical staff to handle ICT training and maintenance (Umeagukwu and Ngozi, 2014; Nwezeh, 2010a), unstable electricity supply and low Internet connectivity (Onuka and Durowoju, 2012; Agbetuyi and Oluwatayo, 2012; Adomi, 2005). Unstable electricity and Internet connectivity have made the available ICT facilities in the universities to be dysfunctional (Aduke, 2008).

There are also challenges that are related to employees in these universities. They include low ICT knowledge, skills, and motivation to use technology in teaching and other work activities (Umeagukwu and Ngozi, 2014; Ajadi et al., 2008). Likewise,

technophobia among employees, lack of awareness and interest in ICT use, and lack of intention to learn how to use ICT were identified as factors affecting technology use in the work activities of employees in Nigerian universities (Nkechinyere, 2011; Baro and Zuokemefa, 2011; Aworanti, 2016; Nwezeh, 2010b; Ahmad et al., 2014; Jegede, 2009; Archibong et al., 2010; Folorunso et al., 2006).

Given the fact that e-training is provided through the means of technology, the dual effects of these challenges could affect the ability of the technological universities to deploy the necessary technologies and other resources required for its successful implementation. Specifically, these challenges may also have consequences on employees' ability to use e-training systems in the universities. Since employees remain the major target of every training program of these universities and central to the implementation, use, and success of e-training, understanding what will hinder them from using e-training or create positive behavioural intention to use the system among the employees also becomes indispensable for the technological universities.

According to Ajzen (1991), behavioural intention involves motivational factors that influence behaviour. These factors indicate how hard people are planning to try and how much effort they are planning to exert in order to perform the behaviour. The essence of investigating employees' intention to use e-training in Nigerian technological universities is to be able to understand and explain the important factors influencing behavioural intention towards its usage. Also, such investigation may likely expose the potential areas of employee weaknesses that can hamper use intention so that they can be remedied to ensure all-inclusive e-training acceptance and use. By so doing, the universities can utilise and maximally benefit from using e-training system and thus, meet their training needs within their present constraints. However, at present it is unclear what factors will be most relevant in determining employees' intention to use e-training within the context of Nigerian technological universities.

1.3 Problem Statement

Implementing successful e-training systems in Nigerian technological universities will require strong commitment of the universities in providing the necessary resources for their deployment and other support for employee to adequately use the systems. The ability of the employees and their willingness to accept and adequately utilise and contribute to successful implementation of e-training in the universities is critical. Even though, e-training use in the universities will be mandatory for all employees, there is still the need to examine the factors that will explain why employees intend to use the system or not. In the past, employees have used their labour unions to avoid the implementation of policies and programmes such as e-payment (Ayoola, 2013). Likewise, there are still reported cases of university employees evading the use of technology and prefer the normal way of teaching, supervision, and other administrative activities than using technology (Ahmad et al., 2014). Therefore, one way of ensuring the cooperation of employees in the successful implementing e-training, is to examine and ascertain the factors that will best explain their behavioural intention towards using e-training systems prior to their implementation in these universities. However, no study has provided empirical evidences on the specific factors affecting employees' intention to use e-training within the context of Nigerian technological universities. Meanwhile, there are well documented evidences on factors affecting technology acceptance.

User technology acceptance has been extensively investigated and reported in the extant literature and these investigations have cut across different fields of study, technologies, and contexts. Among the areas these studies were conducted include; learning management systems (LMS) (Baleghi-Zadeh et al., 2017), e-commerce (Awa et al., 2015), mobile education information system (Koç et al., 2016), e-learning system (Al-Gahtani, 2014), e-government (Hamid et al., 2016), electronic banking (Md Nor and Pearson, 2007); teleconferencing (Park et al., 2014), mobile value added services (Kuo and Yen, 2009), cloud computing (Sharma et al., 2016), computers (Teo et al., 2016), websites (Pengnate and Sarathy, 2017), and social networking sites (Choi

and Chung, 2013). These studies and many others have reported some diverse important factors as determinants of individual's intention to use technology.

These factors include the two main constructs of the TAM model, that is, perceived ease of use and perceived usefulness (Baleghi-Zadeh et al., 2017; Mou et al., 2017; Chen et al., 2007b; Wang et al., 2017; Cigdem and Topcu, 2015), computer/Internet self-efficacy (Abdullah et al., 2016; Cheung and Vogel, 2013; Park et al., 2014), trust (Ahmed et al., 2015; Md Nor and Pearson, 2007; Tsai et al., 2011), interactivity (Qutaishat, 2012; Jeon et al., 2017; Lee et al., 2015b), organisational support (Zainab et al., 2015; Al-alak and Alnawas, 2011), attitude (Ortega Egea and Román González, 2011; Dlalisa, 2017; Bakhsh et al., 2017), enjoyment (Tan and Leby Lau, 2016; Wu and Chang, 2005), and subjective norm (Mou et al., 2017; Cigdem and Topcu, 2015; Shum et al., 2009). Others include security (Qutaishat, 2012), image (Phatthana and Mat, 2011), appeal (Pengnate and Sarathy, 2017), playfulness (Wu and Chang, 2005; Pai and Yeh, 2014; Ifinedo, 2017), compatibility (Chen and Hsiao, 2012; Lai, 2017), perceived fit (Wu et al., 2008), service quality (Tan and Leby Lau, 2016), job opportunity (Sharma et al., 2016), perceived risk (Pavlou, 2003; Ortega Egea and Román González, 2011), and satisfaction (Maria Correia Loureiro et al., 2014). It should be noted however, that perceived usefulness, perceived ease of use, computer/Internet self-efficacy, interactivity, organisational support, and trust were reported by majority of the studies reviewed (see Appendix A).

In the case of e-training, researchers have also investigated the factors that influence employee's intention to use e-training. Review of the literature in the area has revealed some important factors have been established as determinants of intention to use e-training. These factors include perceived ease of use (Halim et al., 2016; Ham et al., 2008; Masa'd, 2017) and perceived usefulness (Makgato and Bankole, 2016; Cheng, 2011; Hashim, 2008), computer/Internet self-efficacy (Mooghali and Mirghaderi, 2012; Hester et al., 2016; Zainab et al., 2017) and organisational support (Chatzoglou et al., 2009; Effendi, 2014; Henneke and Matthee, 2012). These four factors were the most mentioned as determinants of individual's intention to use e-training and are tested in the current study. Others include performance expectancy

(Shaqrah and Husain, 2014), effort expectance (Alrawashdeh and Al-Mahadeen, 2013), computer anxiety (Hester et al., 2016; Yoo et al., 2012), social influence (Hester et al., 2016; Alrawashdeh and Al-Mahadeen, 2013), enjoyment (Yoo et al., 2012), access (Hassan, 2011), privacy (Huang et al., 2015), and motivation (Henneke and Matthee, 2012) (see Appendix B).

The researcher's review of the extant literature has shown that investigations into the factors affecting intention to use e-training systems are not as extensive and wide when compared to factors determining technology acceptance. This has confirmed earlier claims by researchers that empirical evidences on factors affecting intention to use e-training are limited in the literature (Ahmed, 2015; Batalla-Busquets and Martínez-Argüelles, 2014; de Melo Pereira et al., 2015). This also goes further to suggest that factors influencing intention to use e-training, that is, computer/Internet self-efficacy, perceived usefulness, perceived ease of use, and organisational support can be expanded by considering other factors. This can be done by borrowing from existing factors established to have influenced intention to use technology especially those relating to e-learning, e-commerce, and e-government.

Several similarities exist between the environments of these systems and that of e-training. The most important similarity is that they all use technology and their services are provided online. Previous studies have confirmed the technological similarity among these systems. For instance, it was reported that providing e-training will require the use of technology which is mediated by Internet (Mohsin and Sulaiman, 2013). Similarly, e-commerce is facilitated by ICT tools such as the Internet, the World Wide Web (WWW), wireless mobile phones, telefax and computers, among other tools (Migiro, 2006). Likewise, it was reported that e-learning requires technology infrastructure like computers, broadband Internet connection (Oreški and Savić, 2013). Also, it was opined that e-government requires the use of web-enabled computer technologies (Evans and Yen, 2006). Now, since the services of these systems require technology to be offered, it also goes further to suggest that users of these systems are expected to possess the basic knowledge, skills, and confidence of using a computer/Internet.

Another similarity is that the environments of these system contain some elements of uncertainty/risk which are common with most information technologies and online platforms (Yee-Loong Chong et al., 2010). According to Horst et al. (2007), users must trust the infrastructure through which online transactions are performed. Previous studies have reported the existence of risks relating to security of personal information and privacy, in e-commerce, e-government, and in e-learning platforms. For example, it was established that about 75% of consumers worry about security and transaction risks when using mobile payment (Lu et al., 2011; Juan et al., 2009). Similarly, Sarabdeen et al. (2014) have reported that security and privacy are important issues users of e-government consider. In the case of e-learning, Merete Hagen and Albrechtsen (2009) have demonstrated the existence of security and risk issues relating to employee information. The issues relating to privacy and security could also be applicable to e-training environment. Therefore, it is expected that employees of these universities may want to use e-training systems only when they feel it is secured, trustworthy, and can serve their specific needs.

Furthermore, there are also similarities among e-training, e-commerce, e-learning, and e-government systems in terms of how their users interact on their platforms. These systems are expected be interactive in nature in order to enable the users get information, send messages, make queries, and get instant responses. Previous studies have demonstrated that interaction is important in e-learning (Kuo et al., 2013), between e-tailers and customers in e-commerce (Merete Hagen and Albrechtsen, 2009), and necessary for promoting not only online engagement of citizens and public servants, but also offline engagement in e-government (Meskell, 2007). Under e-training, interactions among employees and other participants will also be necessary and important as there is absence of face to face contact during training.

Considering the above similarities among these systems, it will make more sense to incorporate interactivity and trust factors among the determinants of intention to use e-training. Since under e-training, face to face contact is eliminated, and the fact that the employees of Nigerian technological universities are used to the traditional face to face training, it is expected that the ability of their employees to communicate,

send messages and get instant response, could cushion the effects of lack of face to face contact under e-training environment and lead to positive perceptions of its interactivity which will affect intention towards e-training use. Likewise, due to the existence of risks relating to privacy and security in online environment as earlier discussed, employees of these universities may likely exercise some reservations regarding e-training use. Already, there are reported cases of employees evading the use of technology in teaching, supervision, and other work activities due to technophobia (Ahmad et al., 2014), inadequate ICT use knowledge and skills (Igbineweka and Ahmed, 2014) and the fear that technology use will make them lose their jobs (Omeire and Omeire, 2014). In line with this, it is expected that the employees will only want to use e-training when they perceive that e-training system will function well, be reliable, secured, trustworthy, and of benefits to them. Since interactivity and trust constructs have mostly been applied to investigate intention to use e-commerce, e-learning, and e-government, their inclusion to examine intention to use e-training will enhance the present understandings on factors influencing e-training intention and therefore add to new knowledge as these factors have not been examined in e-training yet.

Similarly, the researcher also expects that computer/Internet self-efficacy, perceived usefulness, perceived ease of use, and organisational support will be suitable and relevant in examining intention to use e-training in Nigerian technological universities. These factors as earlier discussed, have been mentioned in the majority of the studies that investigated technology acceptance and those that examined intention to use e-training as strong predictors of intention.

Several theories and models exist in the extant literature that are used in providing explanation on individual's adoption or acceptance of technology. These include among others the Innovation Diffusion Theory, Theory Reasoned Action (TRA), Theory of Planned Behaviour (TPB), the Technology Acceptance Model (TAM), the Unified Theory of Acceptance of the Use of Technology (UTAUT), etc. However, among the various theories and models used in explaining technology use intention, the TAM by Davis (1989) is the most popular and most applied among

researchers (Chau, 1996). Review of the extant literature by the researcher has also confirmed that TAM has been the most widely used among past and recent studies on intention to use technology. According to TAM, user perceptions of usefulness (PU) and ease of use (PEOU) determine user's attitudes toward the system and user's attitudes toward using the system determines his/her behavioural intentions, which subsequently lead to the actual system use of the system. Perceived usefulness has been defined as the extent to which an individual believes that using a particular system would enhance his/her job performance, while perceived ease of use is the extent to which an individual believes that using a particular system would be free of physical and mental effort (Davis, 1989). According to Davis (1989), the chronological relationship of belief to attitude to intention to behaviour in TAM, allows researchers to predict usage of new technologies by users.

Venkatesh and Bala (2008), have reported that many studies have used TAM its applicability and explanatory power in the extant literature relating to technology acceptance and adoption. Another reason advanced for its acceptance among researchers is the degree of its flexibility, which can be modified, based on the purposes of the study, enabling it to be extended (Šumak et al., 2011). Hence, many research were conducted to ascertain the effectiveness of TAM in predicting diverse technologies in which researchers include external variables in order to improve its overall predictive validity (Marangunić and Granić, 2015). Previous studies have applied the TAM and found it to be very effective in providing explanation on why users reject or accept particular technologies (Eke, 2011; Krishanan et al., 2016; Abdullah et al., 2016; Lee et al., 2015b; Masa'd, 2017).

This study used the TAM model as underlying model/theory in explaining why the employees of Nigerian technological universities want to use e-training systems. The traditional relationships of the TAM model were used and additional external factors of computer/Internet self-efficacy, interactivity, organisational support, and trust were incorporated into the model. Perceived usefulness and trust are used as mediators in the present study. Perceived usefulness has been used to mediate the relationships between perceived ease of use, computer/Internet self-efficacy,

interactivity, organisational support, and trust and intention on individual basis. Next section presents the research questions and objectives the study will attempt to answer and achieve respectively.

1.4 Research Questions

Based on the stated problems above, and the gap identified in the extant literature, the following questions were set to be answered by this study:

- III. What are the relationships between the individual factors (computer/Internet self-efficacy, interactivity, organisational support, and perceived ease of use), perceived usefulness, trust and employees' intention to use e-training in Nigerian technological universities?
- IV. Does perceived usefulness mediate the relationship between individual factors and intention to use e-training in Nigerian technological universities?
- V. Does trust mediate the relationship between individual factors and intention to use e-training in Nigerian technological universities?

1.5 Research Objectives

The aim of the study was to determine the mediating effects of perceived usefulness and trust between individual factors and intention to use e-training in Nigerian technological universities. Specifically, the study was set to achieve the following objectives: -

- I. To determine whether relationships exist between these individual factors (computer/Internet self-efficacy, interactivity, organisational support, and perceived ease of use), perceived usefulness, trust and employees' intention to use e-training in Nigerian technological universities.
- II. To determine if perceived usefulness mediates the influence of individual factors on intention to use e-training in Nigerian technological universities.
- III. To determine if trust mediates the influence of individual factors on intention to use e-training in Nigerian technological universities.

1.6 Significance of the Study

Nigerian technological universities were established to provide human capital development by producing scientists and engineers with requisite entrepreneurial and leadership skills, and to facilitate scientific and technological knowledge development, incubation and dissemination through collaborative research and establishing linkages with industries locally and globally (Hayden et al., 1992). To achieve these objectives, the universities are required to have a functional and competent workforce who will carry out the various activities of teaching, supervision, research, and others. However, these universities face the problems of weakening employee performance (Ogbulafor, 2011) and low funding (Umeagukwu and Ngozi, 2014; Aworanti, 2016). Previously, employees' performance was reported to have been influenced by training (Dermol and Čater, 2013). However, with low funding, these universities may find it challenging to sustain the traditional face-to-face training method having been established to be expensive (Bajracharya, 2017). Thus, the universities as a matter of urgency need to seek for alternative strategies for providing training to their diverse and large staff base.

Meanwhile, technological developments have made it possible for these universities to provide e-training which is that is flexible (Chao and Chen, 2009), that provides virtual reality and that is cost-effective (Amara and Atia, 2016). The fact that e-training is highly dependent on technology in order to be delivered, caution must be exercised by the universities regarding to its implementation. A part from the need to put in place necessary technologies required for e-training systems use, the employees, whom the training is meant for should be in the position to adequately utilise it. Therefore, the findings of this study will provide information that will offer adequate explanation and understanding of the important factors to be considered prior to implementing e-training. Specifically, this study is of significance to the following.

1.6.1 Knowledge contribution

It is expected that the findings of this scholarly work have filled the gaps existing in the extant literature on factors influencing intention to use e-training by providing empirical evidences on the factors determining intention to use e-training in Nigerian technological universities. Conducting empirical study to examine the factors influencing intention to use e-training has not only filled the gaps in the literature on factors determining intention to use e-training which was reported as inadequate (Fallery et al., 2010; Zainab et al., 2015), but has also provided more insights into the factors explaining employees' behavioural intention towards using e-training within context of Nigerian technological universities. Also, the findings could be relevant to other universities within Nigeria and other African countries considering their nature and cultural similarity. In addition, to the four common factors examined in e-training, that is, computer/Internet self-efficacy, perceived usefulness, perceived ease of use, and organisational support, by incorporating the external constructs of interactivity and trust into the technology acceptance model, the study, as expected has improved the overall predictiveness of the model. Furthermore, the study also demonstrated the applicability and predictive validity of the TAM in investigating intention to use e-training in Nigerian context. Moreover, the study revealed areas of intention to use e-training that will require further investigations by researchers.

1.6.2 Practice

As expected, the findings of this scholarly work will have impact on e-training practice in the following ways:

1.6.2.1 Employees

Examining the factors influencing intention to use e-training will reveal how employees intend to use e-training and the factors explaining their behavioural intention. Knowing the important factors affecting employees' intention to use e-training will enable the universities' management to strengthen them and improve on areas of weaknesses. For instance, even those employees with high computer/Internet self-efficacy and experience in online learning may still require some training and support when it comes to the use of e-training tools and platforms. Providing special training to improve employees' knowledge, skills, and ability will further improve their capacity to use e-training which will lead to its successful implementation. Successful e-training implementation in the universities will in turn provide the employees with flexible training (Amara and Atia, 2016) that will lead to knowledge development, job satisfaction, and improve work performance (Byun and Mills, 2011).

1.6.2.2 University management

Knowing the factors that will facilitate or deter successful implementation of e-training in the technological universities will be useful to the university management. In other words, by explaining employees' behavioural intention to use e-training in the universities, this study will assist the management of the universities with inputs for planning and decision-making which normally precedes technology integration and drives successful implementation (Jhurree, 2005). For example, findings of this scholarly work have provided some explanation on how employees in Nigerian technological universities arrived at their decision to use e-

training. The findings may further be a reference point for strengthening technology integration in the activities of the universities and for other university management. The findings of the study are also expected to be valuable to management in making decisions in respect of choosing a particular e-training system that will best suit the specific needs of their employees.

With challenges relating to low employee performance and funding, any information that will aid speedy and successful implementation of e-training would be highly appreciated by the management of these universities because it will be timely and very crucial. Successful implementation of e-training will enable the universities to benefit from saving costs relating to employees' travel time and expenditures, flexibility in training delivery, and availability of lifelong use of training resources within the company (Chao and Chen, 2009; Zainab et al., 2015; Amara and Atia, 2016). This will in turn enable the universities develop the knowledge and skills of their employees, and improve job performance (Byun and Mills, 2011; Mohammadyari and Singh, 2015).

1.6.2.3 Other Stakeholders

The Federal Ministry of Education (FMoE) and National Universities Commission (NUC) may find the findings of the study useful for formulation of policies and other regulations for comprehensive continuing professional development of employees in not only technological universities but other public universities as well. Similarly, the findings of the present study may help policy makers to understand the identified areas of e-training that will require priority in the design and implementation in universities. Likewise, developers of training materials, software, and hardware providers will find the findings of this study useful in tailoring their e-training products and related services to universities.

1.7 Scope and Limitations of the Study

There are a total of 43 federal universities spread all over Nigeria (NUC, 2015). Considering the number of these universities, it will be practically impossible for the researcher to cover all in this scholarly work. Since the present study is interested in technology integration, particularly, factors determining intention to use e-training in national public universities, the researcher deemed it suitable to focus on the technological universities among them. In the forty-three universities, five are technological universities and they include Abubakar Tafawa Balewa University (ATBU), Federal Universities of Technology, Akure (FUTA), Federal Universities of Technology, Minna (FUTM), Federal Universities of Technology, Owerri (FUTO), and Modibbo Adama University of Technology, Yola (MAUTECH). Summary of these universities including date established, region, and ownership is provided in Table 1.1. The respondents of the study include both academic and non-academic staff of the five universities as they all require training to improve their knowledge and skills for effective job performance.

Table 1.1: List of National Technological Universities in Nigeria as at 2015

S/N	Name	Region	Ownership	Year Founded
1	Abubakar Tafawa Balewa University, Bauchi (ATBU)	Northeast	Federal	1988
2	Federal University of Technology, Akure (FUTA)	Southwest	Federal	1981
3	Federal University of Technology, Minna (FUTM)	North central	Federal	1982
4	Federal University of Technology, Owerri (FUTO)	Southeast	Federal	1980
5	Modibbo Adama University of Technology, Yola (MAUTECH)	Northeast	Federal	1988

Source: National Universities Commission list of Nigerian universities and year founded (NUC, 2015)

1.7.1 Why Nigerian Technological Universities?

Generally, Nigerian technological universities were established to facilitate new knowledge creation, innovation and technologies for socio-economic development of the country, empowering its citizens, and national integration (Olutola and Olatoye, 2015). According to Hayden et al. (1992), the technological universities in Nigeria are to provide the needed human capital development by producing scientists and engineers with requisite entrepreneurial and leadership skills, and to facilitate scientific and technological knowledge development, incubation and dissemination through collaborative research and establishing linkages with industries locally and globally. To achieve these noble goals, the universities need to attract and hire the most qualified hands in terms of knowledge, skills, and ability to effectively carry out various academic and administrative functions. Likewise, to keep and get the best of their employees, the universities should provide continuous training to improve their competence. As technological universities, they are better positioned and most suitable to use technology in providing training to their employees than other public universities in Nigeria.

From their background, as captured in their objectives above, the Nigerian technological universities should not only be leading in scientific and technological development, but also in their practical applications. In this sense, integrating technology in training employees could set pace for other universities to follow. Also, being funded and assisted by the Federal Government, these universities have fair ICT facilities, and support needed to lead in providing solution to the identified problems of university education through technology (Olutola and Olatoye, 2015). This may include using e-training as compared to other universities who are lagging behind when it comes to technology integration in their activities due to inadequacy of basic ICTs and related skills (Lawal et al., 2014; Oye et al., 2011).

Similarly, these universities are anticipated to have employees (both academic and non-academic) that are professionally inclined towards science and technology and with the basic ICT skills and technical knowledge who are likely to be disposed

towards e-training acceptance and use. In addition, these universities have a national spread from the north, south, west and eastern parts of Nigeria (see Table 1.1 above). This makes them a good sample to study, given their peculiarities in terms of education, knowledge, culture, geography, which could have some impacts on the universities, their employees and perceptions on e-training implementation. Therefore, the above stated reasons, in addition to the researcher's personal experience in technological university as an employee justify the selection of national technological universities in Nigeria for this scholarly work. Next is the conceptual and operational definition of the important terms used in this study.

1.8 Conceptual and Operational Definition of Terms

This part of the chapter provides the conceptual and operational meanings of the terms used in this study. They include the following:

1.8.1 Individual Factors

Individual factors in this study refer to those factors relating to employee's capacity, knowledge and skill, motivation, and beliefs that affect employee's disposition towards using e-training system in Nigerian technological universities. For the present study, individual factors include; computer/Internet self-efficacy, perceived ease of use, interactivity, and organisational support. These factors were arrived at after reviewing literature on the factors influencing technology acceptance and those on intention to use e-training. They were mentioned in most studies as strong determinants of intention to use technology. The researcher expected that these factors will be suitable for examining intention to use e-training in the context of this study.

1.8.2 E-training (ET)

Mohsin and Sulaiman (2013), defined e-training as the process of delivering skills and knowledge with the use of technology that is being mediated by Internet from an instructor to employee. In the present study, e-training refers to e-training as the type of training provided by organizations to their employees through the Internet/ Intranet/Web, computers, recorded past trainings on CD-ROM or flash drive, and other electronic media with a view to improve their knowledge and skills for better performance.

1.8.3 Intention (INT)

Intention to use refers to the degree to which the participants have formulated plans to perform or not perform a specified behavior in the future (Venkatesh et al., 2003). In the context of this study, intention to use e-training is defined as the extent at which the employees of the public universities in Nigeria intend to use e-training system.

1.8.4 Perceived Usefulness (PU)

Perceived usefulness has been defined as the degree to which a person believes that using a particular system would enhance his/her job performance (Davis et al., 1989). Perceived usefulness in this study refers to the degree to which an employee believes that using e-training would enhance his/her skills, task accomplishment, productivity, and make work easy and useful.

1.8.5 Perceived Ease of Use (PEOU)

According to Davis et al. (1989), perceived ease of use is the degree to which a person believes that using a particular system would be free of physical and mental effort. In the present study, perceived ease of use refers to the degree to which an employee believes that using e-training system will be easy to operate, understandable and flexible.

1.8.6 Computer/Internet Self-Efficacy (CISE)

According to Compeau and Higgins (1995), computer self-efficacy refers to an individual's judgment regarding his/her ability to use a computer while Internet self-efficacy refers to the individuals belief regarding his/her capacity to utilise the Internet (Hsu and Chiu, 2004). In this study, computer/Internet self-efficacy mean the extent to which an employee possesses the knowledge, skills, and confidence to perform the basic functions of computer applications like MS Word, Excel, and capacity to use the Internet.

1.8.7 Interactivity (IR)

According to Liu and Shrum (2002), interactivity refers to the degree to which two or more communication parties can act on each other, on the communication medium, and on the messages and the degree to which such influences as synchronized. This study adapted this definition and defined interactivity as the degree to which two or more parties communicating in an e-training environment can act on each other, on the communication medium, and on the messages, and the degree to which such influences are synchronized.

1.8.8 Organisational Support (OS)

Organisational support has been defined as the extent to which top and middle management allocate adequate resources to help employees achieve organisational goals (e.g. top and middle management encouragement, technical support facilities (Lee et al., 2013). In the present study, organisational support is seen from the individual level instead of organisational level and thus defined as the perceptions of employees on organisation or its management commitments towards encouraging the optimal use of e-training system by providing guidance, assistance, and encouragement to employees in order to improve e-training systems use.

1.8.9 Trust (TRS)

Grandison and Sloman (2000) defined trust as the firm belief in the competence of an entity to act dependably, securely, and reliably within a specified context (assuming dependability covers reliability and timeliness). Trust in this study refers to the extent to which employees consider e-training system to be functional, reliable, secure, trustworthy, and in their best interest.

1.9 Structure of this thesis

The structure of this thesis, which shows how it is organised and the processes involved, is captured in Figure 1.1 below

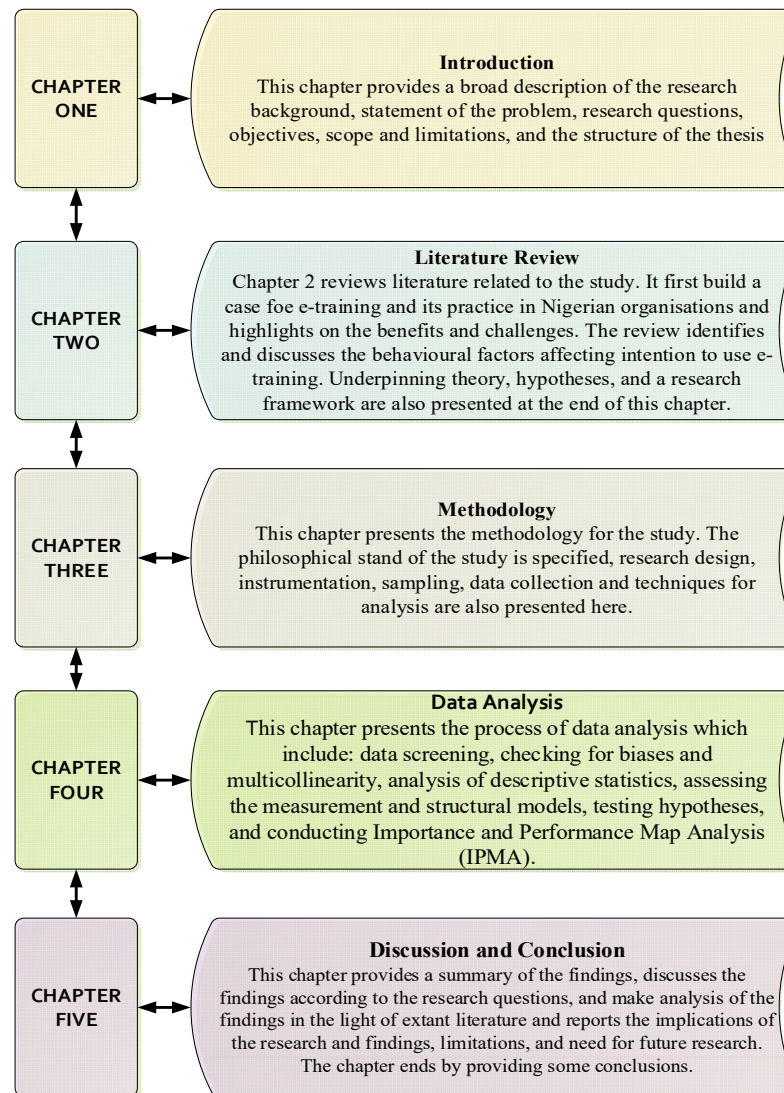


Figure 1.1: Thesis Structure

1.10 Summary

In this chapter, background of the study was presented and the problem of the study was identified and discussed. Similarly, the related research questions and objectives were outlined. The chapter also discussed the significance, scope, and limitations of the study. A structure of the research proposal has equally been presented. The next chapter will provide the conceptual and theoretical background of the study.

REFERENCES

- A Iahad, N. (2011). A model of ICT acceptance and use for teachers in higher education institutions. *International Journal of Computer Science & Communication Networks*. 1(1), 22-40.
- Abbad, M.M., Morris, D. and De Nahlik, C. (2009). Looking under the bonnet: Factors affecting student adoption of e-learning systems in Jordan. *The International Review of Research in Open and Distributed Learning*. 10(2).
- Abdulkadir, I.A. (1995). "Preface", Management Information System for Nigerian Universities: A Report on the 1994 MIS Seminars Held at Mamdala Hotel, Kaduna. Abuja: National Universities Commission.
- Abdullah, F., Ward, R. and Ahmed, E. (2016). Investigating the influence of the most commonly used external variables of TAM on students' Perceived Ease of Use (PEOU) and Perceived Usefulness (PU) of e-portfolios. *Computers in Human Behavior*. 63, 75-90.
- Abu-Shanab, E.A. (2017). E-government familiarity influence on Jordanians' perceptions. *Telematics and Informatics*. 34(1), 103-113.
- Abubakar, F.M. and Ahmad, H.B. (2013). The moderating effect of technology awareness on the relationship between UTAUT constructs and behavioural intention to use technology: A conceptual paper. *Australian Journal of Business and Management Research*. 3(2), 14.
- Achimugu, P., Oluwagbemi, O. and Oluwaranti, A. (2010). An evaluation of the impact of ICT diffusion in Nigeria's higher educational institutions. *Journal of Information Technology Impact*. 10(1), 25-34.
- Adewale, T.O. and Daramola, C.F. (2013). E-Learning in Obafemi Awolowo University, Ile-Ife, Nigeria Distance Learning Centre: An Evaluation of Opportunities and Challenges. *Proceedings of the 8th International Conference on e-Learning: ICEL 2013*. 17.
- Adewole-Odeshi, E. (2014). Attitude of Students Towards E-learning in South-West Nigerian Universities: An Application of Technology Acceptance Model.

- Adeyemi, T. (2011). Impact of information and communication technology (ICT) on the effective management of universities in South-West Nigeria. *Am. J. Soc. Mgmt. Sci.* 2(3), 248-257.
- Adomi, E.E. (2005). Internet development and connectivity in Nigeria. *Program.* 39(3), 257-268.
- Adu, E., Eze, I., Salako, E. and Nyangechi, J. (2013). E-learning and distance education in Nigeria. *International Journal of science and Technology.* 2(2), 203-210.
- Aduke, A.F. (2008). Usage and Challenges of Information Communication Technology (ICT) in teaching and learning in Nigerian Universities. *Asian Journal of Information Technology.* 7(7), 290-295.
- Agag, G. and El-Masry, A.A. (2016). Understanding consumer intention to participate in online travel community and effects on consumer intention to purchase travel online and WOM: An integration of innovation diffusion theory and TAM with trust. *Computers in human behavior.* 60, 97-111.
- Agbetuyi, P. and Oluwatayo, J. (2012). Information and Communication Technology (ICT) in Nigerian Educational System. *Mediterranean Journal of Social Sciences.* 3(3).
- Ahmad, S.A., Kamba, M.A. and Usman, M. (2014). Technophobia Versus ICT Acceptance and Use in Teaching and Learning Among Academic Staff Of Universities in Northern Nigeria. *British Educational Research Association Annual Conference, University of Manchester.* 4-6.
- Ahmad, T.B.T., Madarsha, K.B., Zainuddin, A.M.H., Ismail, N.a.H. and Nordin, M.S. (2010). Faculty's acceptance of computer based technology: Cross-validation of an extended model. *Australasian Journal of Educational Technology.* 26(2).
- Ahmed, T., Alhadi, N. and Seliaman, M.E. (2015). Acceptance of e-Government Services in Sudan: an Empirical Investigation. *2015 International Conference on Cloud Computing (ICCC).* 26-29 April 2015. 1-4.
- Ahmed, T.T. (2015). Transfer Employability Skills through e-Training as Nonlinear Processes Carried Out in Organizations Networks: An Empirical Examination from Innovation Perspective.
- Ajadi, T.O., Salawu, I.O. and Adeoye, F.A. (2008). E-Learning and Distance Education in Nigeria. *Online Submission.* 7(4).
- Ajzen, I. (1991). The theory of planned behavior. *Organizational behavior and human decision processes.* 50(2), 179-211.

- Ajzen, I. and Fishbein, M. (1980). Understanding attitudes and predicting social behaviour.
- Akpodiete, A.A. 2012. *ICT illiteracy in Nigerian Schools and Civil Service – how do we bridge the digital divide?* [Online]. Available: www.thenigerianvoice.com/news/87725/1/ict-illiteracy-innigerian-schools-civil-service.html].
- Akuegwu, B., Ntukidem, E., Ntukidem, P. and Jaja, G. (2011). Information and communications technology (ICT) facilities utilization for quality instructional service delivery among university lecturers in Nigeria. *Review of Higher Education in Africa*. 3(1).
- Al-Alak, B.A. and Alnawas, I.A. (2011). Measuring the acceptance and adoption of e-learning by academic staff. *Knowledge Management & E-Learning: An International Journal (KM&EL)*. 3(2), 201-221.
- Al-Ammary, J.H., Al-Sherooqi, A.K. and Al-Sherooqi, H.K. (2014). The acceptance of social networking as a learning tools at University of Bahrain. *International Journal of Information and Education Technology*. 4(2), 208.
- Al-Gahtani, S.S. (2014). Empirical investigation of e-learning acceptance and assimilation: A structural equation model. *Applied Computing and Informatics*. (0).
- Al-Gahtani, S.S. (2016). Empirical investigation of e-learning acceptance and assimilation: A structural equation model. *Applied Computing and Informatics*. 12(1), 27-50.
- Alenezi, A.R., Karim, A.M.A. and Veloo, A. (2010). An empirical investigation into the role of enjoyment, computer anxiety, computer self-efficacy and internet experience in influencing the students' intention to use e-learning: A case study from Saudi Arabian governmental universities. *TOJET: The Turkish Online Journal of Educational Technology*. 9(4).
- Alrawashdeh, T.A. and Al-Mahadeen, B.M. (2013). Extended UTAUT to Examine the Acceptance of Web Based Training Systems by Public Sector. *International Journal of Interactive Mobile Technologies*. 7(1).
- Alrawashdeh, T.A., Muhairat, M.I. and Alqatawnah, S.M. (2012). Factors affecting acceptance of web-based training system: using extended UTAUT and structural equation modeling. *arXiv preprint arXiv:1205.1904*.
- Amara, N.B. and Atia, L. (2016). E-Training and Its Role in Human Resources Development. *Global Journal of Human Resource Management*. 4(1), 1-12.

- Aminu, H. and Rahaman, S. (2014). Barriers Thrusting e-learning to the Backseat: Nigeria a Case Study. *International Journal of Information Processing & Management*. 5(4).
- Anandarajan, M., Igbaria, M. and Anakwe, U.P. (2002). IT acceptance in a less-developed country: a motivational factor perspective. *International Journal of Information Management*. 22(1), 47-65.
- Ani, O.E., Edem, M.B. and Ottong, E.J. (2010). Analysis of internet access and use by academic staff in the University of Calabar, Calabar, Nigeria. *Library Management*. 31(7), 535-545.
- Annamali, T., Abdullah, A. and Alazidiyeen, N. (2010). The mediating effects of POS on the relation between organizational justice, trust, and performance appraisal in Malaysian secondary schools. *Eur. J. Soc. Sci.* 13(4), 623-632.
- Aramide, K.A. and Bolarinwa, O.M. (2010). Availability and use of audiovisual and electronic resources by Distance Learning Students in Nigerian Universities: A case study of National Open University of Nigeria (NOUN), Ibadan Study Centre.
- Archibong, I.A., Ogbiji, J. and Anijaobi-Idem, F. (2010). ICT competence among academic staff in universities in Cross Rivers State, Nigeria. *Computer and Information Science*. 3(4), p109.
- Aremu, A. and Adediran, E.M. (2011). Teacher Readiness to Integrate Information Technology into Teaching and Learning Processes in Nigerian Secondary Schools: A Case Study. *African Research Review*. 5(4).
- Arslan, R. and Uzaslan, N.T. (2017). Impact of competency-based and target-oriented training on employee performance: A case study. *Industry and Higher Education*. 0950422217715199.
- Ashtari, S. and Eydgahi, A. (2015). Student Perceptions of Cloud Computing Effectiveness in Higher Education. *Computational Science and Engineering (CSE), 2015 IEEE 18th International Conference on*. 184-191.
- Atunde Alao, I. and Lanre Folorunsho, A. (2008). The use of cybercafés in Ilorin, Nigeria. *The Electronic Library*. 26(2), 238-248.
- Awa, H.O., Ojiabo, O.U. and Emecheta, B.C. (2015). Integrating TAM, TPB and TOE frameworks and expanding their characteristic constructs for e-commerce adoption by SMEs. *Journal of Science & Technology Policy Management*. 6(1), 76-94.

- Aworanti, O.A. (2016). Information and Communications Technology (ICT) in Nigeria Educational Assessment System-Emerging Challenges. *Universal Journal of Educational Research*. 4(6).
- Ayoola, T.J. (2013). The effect of cashless policy of government on corruption in Nigeria. *International Review of Management and Business Research*. 2(3), 682-690.
- Babbie, E.R. (1998). *The practice of social research*. Wadsworth publishing company Belmont, CA.
- Baizal, Z.A., Widyantoro, D.H. and Maulidevi, N.U. (2016). Factors Influencing User's Adoption of Conversational Recommender System Based on Product Functional Requirements. *TELKOMNIKA (Telecommunication Computing Electronics and Control)*. 14(4).
- Bajracharya, J.R. (2017). Cost-effectiveness analysis of "ICT in Education" in developing countries. *International Journal of Scientific & Engineering Research*. 8(1), 1548 - 1562.
- Bakhsh, M., Bakhsh, M., Mahmood, A., Mahmood, A., Sangi, N.A. and Sangi, N.A. (2017). Examination of factors influencing students and faculty behavior towards m-learning acceptance: An empirical study. *The International Journal of Information and Learning Technology*. 34(3), 166-188.
- Baleghi-Zadeh, S., Ayub, A.F.M., Mahmud, R. and Daud, S.M. (2017). The influence of system interactivity and technical support on learning management system utilization. *Knowledge Management & E-Learning: An International Journal (KM&EL)*. 9(1), 50-68.
- Bankole, O.M. (2013). The use of internet services and resources by scientists at Olabisi Onabanjo University, Ago Iwoye, Nigeria. *Program*. 47(1), 15-33.
- Bao, H., Bao, H., Li, B., Li, B., Shen, J., Shen, J., Hou, F. and Hou, F. (2016). Repurchase intention in the Chinese e-marketplace: Roles of interactivity, trust and perceived effectiveness of e-commerce institutional mechanisms. *Industrial Management & Data Systems*. 116(8), 1759-1778.
- Barclay, D., Higgins, C. and Thompson, R. (1995). The partial least squares (PLS) approach to causal modeling: Personal computer adoption and use as an illustration. *Technology studies*. 2(2), 285-309.
- Baro, E.E. and Zuokemefa, T. (2011). Information literacy programmes in Nigeria: a survey of 36 university libraries. *New Library World*. 112(11/12), 549-565.

- Baron, R.M. and Kenny, D.A. (1986). The moderator–mediator variable distinction in social psychological research: Conceptual, strategic, and statistical considerations. *Journal of personality and social psychology*. 51(6), 1173.
- Basak, E. and Calisir, F. (2015). An empirical study on factors affecting continuance intention of using Facebook. *Computers in Human Behavior*. 48, 181-189.
- Batalla-Busquets, J.-M. and Martínez-Argüelles, M.-J. (2014). Determining factors in online training in companies. *The International Journal of Management Education*. 12(2), 68-79.
- Beckman, T.J. and Cook, D.A. (2007). Developing scholarly projects in education: a primer for medical teachers. *Medical teacher*. 29(2-3), 210-218.
- Bednar, A.K., Cunningham, D., Duffy, T.M. and Perry, J.D. (1992). Theory into practice: How do we link. *Constructivism and the technology of instruction: A conversation*. 17-34.
- Bell, E. and Bryman, A. (2007). The ethics of management research: an exploratory content analysis. *British Journal of Management*. 18(1), 63-77.
- Benamati, J., Fuller, M.A., Serva, M.A. and Baroudi, J. (2010). Clarifying the Integration of Trust and TAM in E-Commerce Environments: Implications for Systems Design and Management. *IEEE Transactions on Engineering Management*. 57(3), 380-393.
- Benson Adogbeji, O. and Amina Akporhonor, B. (2005). The Impact of ICT (Internet) on Research and Studies: The Experience of Delta State University Students in Abraka, Nigeria. *Library Hi Tech News*. 22(10), 17-21.
- Bhattacharjee, A. and Hikmet, N. (2008). Reconceptualizing Organizational Support and its Effect on Information Technology Usage: Evidence from the Health Care Sector. *Journal of Computer Information Systems*. 48(4), 69-76.
- Bhuasiri, W., Xaymoungkhoun, O., Zo, H., Rho, J.J. and Ciganek, A.P. (2012). Critical success factors for e-learning in developing countries: A comparative analysis between ICT experts and faculty. *Computers & Education*. 58(2), 843-855.
- Bordbar, F.T., Hossein Kamani, S.M. and Yekta, M. (2016). Explain the causal model of The use of Internet technology by employees of the National Bank of Shiraz, According to Subjective norms, governmental and institutional support. *Interdisciplinary Journal of Virtual Learning in Medical Sciences*. 6(4).
- Borghini, G., Aricò, P., Graziani, I., Salinari, S., Sun, Y., Taya, F., Bezerianos, A., Thakor, N.V. and Babiloni, F. (2016). Quantitative assessment of the training

- improvement in a motor-cognitive task by using EEG, ECG and EOG signals. *Brain topography*. 29(1), 149-161.
- Boyinbode, O. and Akinyede, R. (2008). Mobile learning: An application of mobile and wireless technologies in Nigerian learning system. *International Journal of computer science and network security*. 8(11), 386-392.
- Brezavšček, A., Šparl, P. and Žnidaršič, A. (2017). Factors Influencing the Behavioural Intention to Use Statistical Software: The Perspective of the Slovenian Students of Social Sciences. *EURASIA Journal of Mathematics, Science & Technology Education*. 13(3), 953-986.
- Bullock, J.G., Green, D.P. and Ha, S.E. (2010). Yes, but what's the mechanism?(don't expect an easy answer). *Journal of personality and social psychology*. 98(4), 550.
- Byrne, B. (2010). Structural equation modeling using AMOS. *Basic concepts, applications, and programming*.
- Byun, S. and Mills, J.E. (2011). Exploring the creation of learner-centered e-training environments among retail workers: a model development perspective. *Cyberpsychology, Behavior, and Social Networking*. 14(1-2), 65-69.
- Campbell, J.J., Dunnette, M.D., Lawler, E.E. and Weick, K.E. (1970). Managerial behavior, performance, and effectiveness.
- Chai, S. and Kim, M. (2010). What makes bloggers share knowledge? An investigation on the role of trust. *International Journal of Information Management*. 30(5), 408-415.
- Chan, E.S.W. and Choi, J. (2012). Undergraduates' Perceptions Toward the Adoption of Computer-Based Training in Hotels. *Journal of Teaching in Travel & Tourism*. 12(4), 358-376.
- Chang, S.C. and Tung, F.C. (2008). An empirical investigation of students' behavioural intentions to use the online learning course websites. *British Journal of Educational Technology*. 39(1), 71-83.
- Chao, R.-J. and Chen, Y.-H. (2009). Evaluation of the criteria and effectiveness of distance e-learning with consistent fuzzy preference relations. *Expert Systems with Applications*. 36(7), 10657-10662.
- Chatzoglou, P.D., Sarigiannidis, L., Vraimaki, E. and Diamantidis, A. (2009). Investigating Greek employees' intention to use web-based training. *Computers & Education*. 53(3), 877-889.

- Chau, P.Y. (1996). An empirical assessment of a modified technology acceptance model. *Journal of management information systems*. 13(2), 185-204.
- Chen, C.-Y., Sok, P. and Sok, K. (2007a). Exploring potential factors leading to effective training: An exclusive study on commercial banks in Cambodia. *Journal of management development*. 26(9), 843-856.
- Chen, C. (2006). Identifying significant factors influencing consumer trust in an online travel site. *Information Technology & Tourism*. 8(3-4), 197-214.
- Chen, Q., Chen, H.-M. and Kazman, R. (2007b). Investigating antecedents of technology acceptance of initial eCRM users beyond generation X and the role of self-construal. *Electronic Commerce Research*. 7(3), 315-339.
- Chen, R.-F. and Hsiao, J.-L. (2012). An investigation on physicians' acceptance of hospital information systems: a case study. *International journal of medical informatics*. 81(12), 810-820.
- Cheng, B., Wang, M., Moormann, J., Olaniran, B.A. and Chen, N.-S. (2012). The effects of organizational learning environment factors on e-learning acceptance. *Computers & Education*. 58(3), 885-899.
- Cheng, Y.-M. (2011). Antecedents and consequences of e-learning acceptance. *Information Systems Journal*. 21(3), 269-299.
- Chesney, T. (2006). An acceptance model for useful and fun information systems. *Human Technology: An Interdisciplinary Journal on Humans in ICT Environments*. 2(2), 225-235.
- Cheung, R. and Vogel, D. (2013). Predicting user acceptance of collaborative technologies: An extension of the technology acceptance model for e-learning. *Computers & Education*. 63, 160-175.
- Chin, W.W. (1998). The partial least squares approach to structural equation modeling. *Modern methods for business research*. 295(2), 295-336.
- Chin, W.W. (2010). *How to write up and report PLS analyses*. *Handbook of partial least squares*. (pp. 655-690). Springer.
- Chinomona, R. (2013). The influence of perceived ease of use and perceived usefulness on trust and intention to use mobile social software. *African Journal for Physical, Health Education, Recreation and Dance*. 19(2), 258-273.
- Chiu, Y.-L. and Tsai, C.-C. (2014). The roles of social factor and internet self-efficacy in nurses' web-based continuing learning. *Nurse Education Today*. 34(3), 446-450.

- Choi, G. and Chung, H. (2013). Applying the Technology Acceptance Model to Social Networking Sites (SNS): Impact of Subjective Norm and Social Capital on the Acceptance of SNS. *International Journal of Human-Computer Interaction*. 29(10), 619-628.
- Chong, B., Martinsons, M.G. and Wong, M. (2004). Adoption of e-Learning for work-based training: An exploratory study of the Hong Kong apparel industry. *International journal of innovation and learning*. 1(3), 312-326.
- Chu, R. and Tsai, C.C. (2009). Self-directed learning readiness, Internet self-efficacy and preferences towards constructivist Internet-based learning environments among higher-aged adults. *Journal of Computer Assisted Learning*. 25(5), 489-501.
- Chuang, L.-M., Liu, C.-C. and Kao, H.-K. (2016). The adoption of fintech service: TAM perspective. *Int J Manag Adm Sci*. 3, 1-15.
- Chun, M. (2014). A Study on College Students' Use Intention of Internet Learning Resources in Chongqing. *Asian Social Science*. 10(3), 70.
- Chuo, Y., Liu, C. and Tsai, C. (2015). Effectiveness of e-learning in hospitals. *Technology and Health Care*. 23(s1).
- Cigdem, H. and Topcu, A. (2015). Predictors of instructors' behavioral intention to use learning management system: A Turkish vocational college example. *Computers in Human Behavior*. 52, 22-28.
- Coakes, S.J., Steed, L. and Dzidic, P. (2006). SPSS version 13.0 for Windows. *John Willey and Sons Australia Ltd., Australia*.
- Cohen, J. (1988). Statistical power analysis for the behavioral sciences. Vol. 2. *Lawrence Earlbaum Associates, Hillsdale, NJ*.
- Compeau, D.R. and Higgins, C.A. (1995). Computer self-efficacy: Development of a measure and initial test. *MIS quarterly*. 189-211.
- Corbitt, B.J., Thanasankit, T. and Yi, H. (2003). Trust and e-commerce: a study of consumer perceptions. *Electronic commerce research and applications*. 2(3), 203-215.
- Craig, K., Tams, S., Clay, P.F. and Thatcher, J.B. (2010). Integrating Trust in technology and Computer Self-Efficacy within the Post-Adoption Context: An Empirical Examination. *AMCIS*. 425.
- Creswell, J.W. (2002). Educational research: Planning, conducting, and evaluating quantitative. *New Jersey: Upper Saddle River*.

- Davis, F.D. (1989). Perceived usefulness, perceived ease of use, and user acceptance of information technology. *MIS quarterly*. 319-340.
- Davis, F.D., Bagozzi, R.P. and Warshaw, P.R. (1989). User acceptance of computer technology: a comparison of two theoretical models. *Management science*. 35(8), 982-1003.
- De Langen, F. and Bitter-Rijkema, M.E. (2012). Positioning the OER business model for open education. *European Journal of Open, Distance and e-Learning*. 15(1).
- De Melo Pereira, F.A., Ramos, A.S.M., Gouvêa, M.A. and Da Costa, M.F. (2015). Satisfaction and continuous use intention of e-learning service in Brazilian public organizations. *Computers in Human Behavior*. 46, 139-148.
- Dermol, V. and Čater, T. (2013). The influence of training and training transfer factors on organisational learning and performance. *Personnel review*. 42(3), 324-348.
- Diamantopoulos, A. and Siguaw, J.A. (2006). Formative versus reflective indicators in organizational measure development: A comparison and empirical illustration. *British Journal of Management*. 17(4), 263-282.
- Dlalisa, S. (2017). Acceptance and usage of learning management system amongst academics. *Information Communication Technology and Society (ICTAS), Conference on*. 1-7.
- Dukhan, N.R., Mohamad, N. and Ali, A.B. (2017). Analyzing the Effect of the Senior Management's Support on the Relationship between Factors Affecting and Employees' Performance in the Al-Zawiya University of Libya. *Asian Social Science*. 13(3), 42.
- Effendi, A. (2014). Online training effect on employee skills development. *Information and Communication Technology (ICoICT), 2014 2nd International Conference on*. 288-291.
- Eke, H.N. (2011). Modeling LIS students' intention to adopt e-learning: a case from university of Nigeria, Nsukka.
- El-Rufai, N. (2011). Reforming Nigeria: reforming our dysfunctional public service.
- El Said, G.R. (2015). The use of education management information systems in higher education institutions: An empirical investigation of the effect of degree of interactivity. *International Journal of Higher Education Management*. 1(2).

- Elias, N.I. and Walker, T.W. (2016). Factors that Contribute to Continued Use of E-Training among Healthcare Professionals. *Handbook of Research on Individualism and Identity in the Globalized Digital Age*. 403.
- Elkaseh, A.M., Wong, K.W. and Fung, C.C. (2016). Perceived Ease of Use and Perceived Usefulness of Social Media for e-Learning in Libyan Higher Education: A Structural Equation Modeling Analysis. *International Journal of Information and Education Technology*. 6(3), 192.
- Ellis, P.F. and Kuznia, K.D. (2014). Corporate eLearning impact on employees. *Global Journal of Business Research*. 8(4), 1.
- Eriksson, P. and Kovalainen, A. (2008). *Qualitative methods in business research*. London: SAGE Publications.
- Escobar-Rodriguez, T., Carvajal-Trujillo, E. and Monge-Lozano, P. (2014). Factors that influence the perceived advantages and relevance of Facebook as a learning tool: An extension of the UTAUT. *Australasian Journal of Educational Technology*. 30(2).
- Evans, D. and Yen, D.C. (2006). E-Government: Evolving relationship of citizens and government, domestic, and international development. *Government information quarterly*. 23(2), 207-235.
- Eze, S.C., Awa, H.O., Okoye, J.C., Emecheta, B.C. and Anazodo, R.O. (2013). Determinant factors of information communication technology (ICT) adoption by government-owned universities in Nigeria. *Journal of Enterprise Information Management*. 26(4), 427-443.
- Fagan, M.H., Stern, N. and Wooldridge, B.R. (2003). An empirical investigation into the relationship between computer self-efficacy, anxiety, experience, support and usage. *The Journal of Computer Information Systems*. 44(2), 95.
- Falk, R.F. and Miller, N.B. (1992). *A primer for soft modeling*. University of Akron Press.
- Fallery, B., Ologeanu-Taddei, R. and Gerbai, S. (2010). Acceptance and Appropriation of Videoconferencing for E-training: an Empirical Investigation. *International Journal of Technology and Human Interaction*. 6(3), 37-52.
- Faqih, K.M. (2011). Integrating perceived risk and trust with technology acceptance model: An empirical assessment of customers' acceptance of online shopping in Jordan. *2011 International Conference on Research and Innovation in Information Systems*. 1-5.

- Faqih, K.M. (2013). Exploring the influence of perceived risk and internet self-efficacy on consumer online shopping intentions: Perspective of technology acceptance model. *International Management Review*. 9(1), 67.
- Faqih, K.M. (2016). An empirical analysis of factors predicting the behavioral intention to adopt Internet shopping technology among non-shoppers in a developing country context: Does gender matter? *Journal of Retailing and Consumer Services*. 30, 140-164.
- Fishbein, M. and Ajzen, I. (1975). Belief, attitudes, intention, and behavior. *An introduction to theory and research*. Massachusetts: Addison-Wesley.
- Folorunso, O. and Akinwale, A. (2010). Developing visualization support system for teaching/learning database normalization. *Campus-Wide Information Systems*. 27(1), 25-39.
- Folorunso, O., Ogunseye, O.S. and Sharma, S.K. (2006). An exploratory study of the critical factors affecting the acceptability of e-learning in Nigerian universities. *Information management & computer security*. 14(5), 496-505.
- Fornell, C. and Larcker, D.F. (1981). Structural equation models with unobservable variables and measurement error: Algebra and statistics. *Journal of marketing research*. 382-388.
- Fritz, M.S. and Mackinnon, D.P. (2007). Required sample size to detect the mediated effect. *Psychological science*. 18(3), 233-239.
- Garavan, T.N., Carbery, R., O'malley, G. and O'donnell, D. (2010). Understanding participation in e-learning in organizations: a large-scale empirical study of employees. *International Journal of Training and Development*. 14(3), 155-168.
- Garavan, T.N., Costine, P. and Heraty, N. (1995). *Training and development in Ireland: context, policy, and practice*. Cengage Learning EMEA.
- Gefen, D. (2004). What makes an ERP implementation relationship worthwhile: Linking trust mechanisms and ERP usefulness. *Journal of Management Information Systems*. 21(1), 263-288.
- Gefen, D., Karahanna, E. and Straub, D.W. (2003). Trust and TAM in online shopping: an integrated model. *MIS quarterly*. 27(1), 51-90.
- Gefen, D., Straub, D. and Boudreau, M.-C. (2000). Structural equation modeling and regression: Guidelines for research practice. *Communications of the association for information systems*. 4(1), 7.

- Geisser, S. (1974). A predictive approach to the random effect model. *Biometrika*. 101-107.
- Geisser, S. (1975). The predictive sample reuse method with applications. *Journal of the American Statistical Association*. 70(350), 320-328.
- George, D. and Mallery, P. (2012). *IBM SPSS Statistics 19 Step by Step*. Boston, Mass: Pearson.
- Ghobakhloo, M., Sabouri, M.S., Hong, T.S. and Zulkifli, N. (2011). Information technology adoption in small and medium-sized enterprises; an appraisal of two decades literature. *interdisciplinary Journal of Research in Business*. 1(7), 53-80.
- Gold, A.H. and Arvind Malhotra, A.H.S. (2001). Knowledge management: An organizational capabilities perspective. *Journal of management information systems*. 18(1), 185-214.
- Grandison, T. and Sloman, M. (2000). A survey of trust in internet applications. *IEEE Communications Surveys & Tutorials*. 3(4), 2-16.
- Gravetter, F.J. and Wallnau, L.B. (2016). *Statistics for the behavioral sciences*. Cengage Learning.
- Gu, J.-C., Lee, S.-C. and Suh, Y.-H. (2009). Determinants of behavioral intention to mobile banking. *Expert Systems with Applications*. 36(9), 11605-11616.
- Guest, D.E. (1997). Human resource management and performance: a review and research agenda. *International journal of human resource management*. 8(3), 263-276.
- Guzzo, T., Ferri, F. and Grifoni, P. (2016). A model of e-commerce adoption (MOCA): consumer's perceptions and behaviours. *Behaviour & Information Technology*. 35(3), 196-209.
- Hair, J.F., Anderson, R.E., Tatham, R.L. and William, C. (1998). Black (1998), *Multivariate data analysis*. Upper Saddle River, NJ: Prentice Hall.
- Hair, J.F., Hult, G.T.M., Ringle, C. and Sarstedt, M. (2013). *A primer on partial least squares structural equation modeling (PLS-SEM)*. Sage Publications.
- Hair, J.F., Hult, G.T.M., Ringle, C. and Sarstedt, M. (2014). *A primer on partial least squares structural equation modeling (PLS-SEM)*. Sage Publications, Inc.
- Hair, J.F., Ringle, C.M. and Sarstedt, M. (2011). PLS-SEM: Indeed a silver bullet. *Journal of Marketing theory and Practice*. 19(2), 139-152.

- Hair, J.F., Sarstedt, M., Pieper, T.M. and Ringle, C.M. (2012). The use of partial least squares structural equation modeling in strategic management research: a review of past practices and recommendations for future applications. *Long range planning*. 45(5), 320-340.
- Halim, A.H.A., Hanafi, E. and Zain, F.M. (2016). *An Analysis of Organisational Dimension as Predictor to the Intention to Use of e-Training System Among Senior School Administrators. Envisioning the Future of Online Learning*. (pp. 159-169). Springer.
- Ham, S., Kim, W.G. and Forsythe, H.W. (2008). Restaurant employees' technology use intention: Validating technology acceptance model with external factors. *Journal of Hospitality & Leisure Marketing*. 17(1-2), 78-98.
- Hamid, A.A., Razak, F.Z.A., Bakar, A.A. and Abdullah, W.S.W. (2016). The Effects of Perceived Usefulness and Perceived Ease of Use on Continuance Intention to Use E-Government. *Procedia Economics and Finance*. 35, 644-649.
- Han, M.-C. (2014). How social network characteristics affect users' trust and purchase intention. *International Journal of Business and Management*. 9(8), 122.
- Harfoushi, O. and Obiedat, R. (2011). E-Training Acceptance Factors in Business Organizations. *iJET*. 6(2), 15-18.
- Harland, P.E. and Nienaber, A.M. (2014). Trust and technology acceptance model: An experimental investigation concerning the idea contributor's acceptance of the organizational matchmaking process. *Proceedings of PICMET '14 Conference: Portland International Center for Management of Engineering and Technology; Infrastructure and Service Integration*. 27-31 July 2014. 226-235.
- Hashim, J. (2008). Factors influencing the acceptance of web-based training in Malaysia: applying the technology acceptance model. *International Journal of Training and Development*. 12(4), 253-264.
- Hassan, H. (2011). Teaching and Learning In Industries: Are We Malaysian Workers Really Ready for The E-Training? *Journal of Technical Education and Training*. 3(2).
- Hayden, M.A., Suleman, I.Y. and Gomper, S. (1992). Technology education in Nigeria: The views of practitioners. *International Journal of Technology and Design Education*. 2(3), 61-63.
- Hayes, A.F. (2009). Beyond Baron and Kenny: Statistical mediation analysis in the new millennium. *Communication monographs*. 76(4), 408-420.

- He, W., Fang, Y. and Wei, K.-K. (2009). The role of trust in promoting organizational knowledge seeking using knowledge management systems: An empirical investigation. *Journal of the American Society for Information Science and Technology*. 60(3), 526-537.
- Henneke, M. and Matthee, M. (2012). The adoption of e-Learning in corporate training environments: an activity theory based overview. *Proceedings of the South African Institute for Computer Scientists and Information Technologists Conference*. 178-187.
- Henseler, J., Ringle, C.M. and Sarstedt, M. (2015). A new criterion for assessing discriminant validity in variance-based structural equation modeling. *Journal of the Academy of Marketing Science*. 43(1), 115-135.
- Henseler, J., Ringle, C.M. and Sinkovics, R.R. (2009). The use of partial least squares path modeling in international marketing. *Advances in international marketing*. 20(1), 277-319.
- Hester, A.J., Hutchins, H.M. and Burke-Smalley, L.A. (2016). Web 2.0 and Transfer: Trainers' Use of Technology to Support Employees' Learning Transfer on the Job. *Performance Improvement Quarterly*. 29(3), 231-255.
- Hew, T.-S. and Syed Abdul Kadir, S.L. (2016). Behavioural intention in cloud-based VLE: An extension to Channel Expansion Theory. *Computers in Human Behavior*. 64, 9-20.
- Hinkin, T.R. (1998). A brief tutorial on the development of measures for use in survey questionnaires. *Organizational research methods*. 1(1), 104-121.
- Holden, M.T. and Lynch, P. (2004). Choosing the appropriate methodology: understanding research philosophy. *The marketing review*. 4(4), 397-409.
- Horst, M., Kuttschreuter, M. and Gutteling, J.M. (2007). Perceived usefulness, personal experiences, risk perception and trust as determinants of adoption of e-government services in The Netherlands. *Computers in Human Behavior*. 23(4), 1838-1852.
- Hsiao, J.-L. and Chen, R.-F. (2016). Critical factors influencing physicians' intention to use computerized clinical practice guidelines: an integrative model of activity theory and the technology acceptance model. *BMC medical informatics and decision making*. 16(1), 3.
- Hsu, C.-L., Lu, H.-P. and Hsu, H.-H. (2007). Adoption of the mobile Internet: An empirical study of multimedia message service (MMS). *Omega*. 35(6), 715-726.

- Hsu, M.-H. and Chiu, C.-M. (2004). Internet self-efficacy and electronic service acceptance. *Decision support systems*. 38(3), 369-381.
- Hsu, M.K., Wang, S.W. and Chiu, K.K. (2009). Computer attitude, statistics anxiety and self-efficacy on statistical software adoption behavior: An empirical study of online MBA learners. *Computers in Human Behavior*. 25(2), 412-420.
- Huang, X., Ge, W. and Liu, Y. (2015). Design and Implementation of E-Training Decision-Making System. *Educational Innovation through Technology (EITT), 2015 International Conference of*. 24-28.
- Hung, M.-L., Chou, C., Chen, C.-H. and Own, Z.-Y. (2010). Learner readiness for online learning: Scale development and student perceptions. *Computers & Education*. 55(3), 1080-1090.
- Idris, M.A., Ismail, Y. and Rizman, Z.I. (2017). The Technology Acceptance of Small and Medium Enterprise towards Vegetable Cutting Technology. *J. Appl. Environ. Biol. Sci*. 7(3), 209-213.
- Ifinedo, P. (2017). Examining students' intention to continue using blogs for learning: Perspectives from technology acceptance, motivational, and social-cognitive frameworks. *Computers in Human Behavior*. 72, 189-199.
- Igbineweka, V. and Ahmed, M. (2014). Teaching and Research Functions in Nigerian Universities: How Many Lecturers Use the Internet? *Journal of Educational and Social Research*. 4(3), 173.
- Islam, A.A. (2016). Development and Validation of the Technology Adoption and Gratification (TAG) Model in Higher Education: A Cross-Cultural Study Between Malaysia and China. *International Journal of Technology and Human Interaction (IJTHI)*. 12(3), 78-105.
- Iwhiwhu, E.B. (2005). Management of records in Nigerian universities: problems and prospects. *Electronic Library, The*. 23(3), 345-355.
- Jamshidi, D. and Hussin, N. (2013). Determining a conceptual framework for adoption of islamic credit card in context of Malaysia. *Journal of Basic and Applied Scientific Research*. 3(1), 188-196.
- Jegede, P.O. (2009). Assessment of Nigerian teacher educators' ICT training. *Issues in Informing Science and Information Technology*. 6, 415-420.
- Jeon, H., Jang, J. and Barrett, E.B. (2017). Linking Website Interactivity to Consumer Behavioral Intention in an Online Travel Community: The Mediating Role of Utilitarian Value and Online Trust. *Journal of Quality Assurance in Hospitality & Tourism*. 18(2), 125-148.

- Jeong, H.I. and Kim, Y. (2017). The acceptance of computer technology by teachers in early childhood education. *Interactive Learning Environments*. 25(4), 496-512.
- Jhurree, V. (2005). Technology integration in education in developing countries: Guidelines to policy makers. *International Education Journal*. 6(4), 467-483.
- John, S.P. (2013). Influence of Computer Self-Efficacy On Information Technology Adoption. *International Journal of Information Technology*. 19(1), 1-13.
- Johnson, R.D., Hornik, S. and Salas, E. (2008). An empirical examination of factors contributing to the creation of successful e-learning environments. *International Journal of Human-Computer Studies*. 66(5), 356-369.
- Joo, Y.J., Kim, N. and Kim, N.H. (2016). Factors predicting online university students' use of a mobile learning management system (m-LMS). *Educational Technology Research and Development*. 1-20.
- Joo, Y.J., Lim, K.Y. and Park, S.Y. (2011). Investigating the structural relationships among organisational support, learning flow, learners' satisfaction and learning transfer in corporate e-learning. *British Journal of Educational Technology*. 42(6), 973-984.
- Joseph Vella and Caruana, A. (2012). Encouraging CRM systems usage: a study among bank managers. *Management Research Review*. 35(2), 121-133.
- Juan, C.R., José García, J. and José De La Vega, J. (2009). The importance of perceived trust, security and privacy in online trading systems. *Information Management & Computer Security*. 17(2), 96-113.
- Kamal, K.B., Aghbari, M.A. and Atteia, M. (2016). E-Training & Employees' Performance a Practical Study on the Ministry of Education in the Kingdom of Bahrain. *Journal of Resources Development and Management*. 18.
- Kamba, M.A. (2010). Implication of ICT's in libraries of higher education institutes: A panacea catapulting library development in Africa. *DESIDOC Journal of Library & Information Technology*. 31(1).
- Kee, N.S., Omar, B., Mohamed, R., Ukwueze, A.C., Handayani, N.S., Amine, B.M., Benachaiba, C., Guemide, B. and Oluniyi, O. (2012). Towards Student-Centred Learning: Factors Contributing to the Adoption of E-Learn@ USM. *Malaysian Journal of Distance Education*. 14(2), 1-24.
- Kim, J., Erdem, M., Byun, J. and Jeong, H. (2011). Training soft skills via e-learning: international chain hotels. *International Journal of Contemporary Hospitality Management*. 23(6), 739-763.

- Kline, R. (2011). Principles and practice of structural equation modeling. 2011. *New York: Guilford Press Google Scholar*.
- Kline, R.B. (2015). *Principles and practice of structural equation modeling*. Guilford publications.
- Koç, T., Turan, A.H. and Okursoy, A. (2016). Acceptance and usage of a mobile information system in higher education: An empirical study with structural equation modeling. *The International Journal of Management Education*. 14(3), 286-300.
- Koontz, H. and Wehrich, H. (2006). *Essentials of management*. 6th ed., Tata McGraw-Hill Publication Co.
- Krejcie, R.V. and Morgan, D.W. (1970). Determining sample size for research activities. *Educational and psychological measurement*. 30(3), 607-610.
- Krishanan, D., Khin, A.A., Teng, K.L.L. and Chinna, K. (2016). Consumers' Perceived Interactivity & Intention to Use Mobile Banking in Structural Equation Modeling. *International Review of Management and Marketing*. 6(4).
- Kudisch, J.D., Fortunato, V.J. and Smith, A.F. (2006). Contextual and individual difference factors predicting individuals' desire to provide upward feedback. *Group & Organization Management*. 31(4), 503-529.
- Kuo, Y.-C., Walker, A.E., Belland, B.R. and Schroder, K.E. (2013). A predictive study of student satisfaction in online education programs. *The International Review of Research in Open and Distributed Learning*. 14(1), 16-39.
- Kuo, Y.-C., Walker, A.E., Schroder, K.E. and Belland, B.R. (2014). Interaction, Internet self-efficacy, and self-regulated learning as predictors of student satisfaction in online education courses. *The Internet and Higher Education*. 20, 35-50.
- Kuo, Y.-F. and Yen, S.-N. (2009). Towards an understanding of the behavioral intention to use 3G mobile value-added services. *Computers in Human Behavior*. 25(1), 103-110.
- Kwache, P. (2007). The imperatives of information and communication technology for teachers in Nigeria higher education. *Merlot Journal of Online Learning and Teaching* 3 (4), 395. 399.
- Lai, H.-J. (2017). Examining civil servants' decisions to use Web 2.0 tools for learning, based on the decomposed theory of planned behavior. *Interactive Learning Environments*. 25(3), 295-305.

- Lai, M.L. (2008). Technology readiness, internet self-efficacy and computing experience of professional accounting students. *Campus-Wide Information Systems*. 25(1), 18-29.
- Lallmahomed, M.Z., Lallmahomed, N. and Lallmahomed, G.M. (2017). Factors influencing the adoption of e-Government Services in Mauritius. *Telematics and Informatics*.
- Lawal, V. and Akintunde, S. (2014). E-learning and information literacy at the University of Jos. *Library Management*. 35(8/9), 607-628.
- Lawal, V., Akintunde, S. and O'connor, S. (2014). E-learning and information literacy at the University of Jos. *Library Management*. 35(8/9), null.
- Lee, D., Moon, J., Kim, Y.J. and Yi, M.Y. (2015a). Antecedents and consequences of mobile phone usability: Linking simplicity and interactivity to satisfaction, trust, and brand loyalty. *Information & Management*. 52(3), 295-304.
- Lee, H.Y., Lee, Y.-K. and Kwon, D. (2005). The intention to use computerized reservation systems: the moderating effects of organizational support and supplier incentive. *Journal of Business Research*. 58(11), 1552-1561.
- Lee, J., Choi, M. and Lee, H. (2015b). Factors affecting smart learning adoption in workplaces: comparing large enterprises and SMEs. *Information Technology and Management*. 16(4), 291-302.
- Lee, K.W., Yau, J.X.R., Said, N., Yoon, S.J., Tan, C.K., Nguyen, L.V. and Thang, S.M. (2016). *Designing a collaborative Malaysian-Vietnamese online writing project: a design-based research. Envisioning the Future of Online Learning*. (pp. 53-67). Springer.
- Lee, Y.-H., Hsieh, Y.-C. and Chen, Y.-H. (2013). An investigation of employees' use of e-learning systems: applying the technology acceptance model. *Behaviour & Information Technology*. 32(2), 173-189.
- Lee, Y.-H., Hsieh, Y.-C. and Ma, C.-Y. (2011). A model of organizational employees' e-learning systems acceptance. *Knowledge-Based Systems*. 24(3), 355-366.
- Lemelson, G. (2007). Methods, systems and apparatus for displaying user generated tracking information. Google Patents.
- Lewicka, D. and Krot, K. (2015). The model of HRM-trust-commitment relationships. *Industrial Management & Data Systems*. 115(8), 1457-1480.

- Lewis, L.T. and Loker, S. (2014). Technology usage intent among apparel retail employees. *International Journal of Retail & Distribution Management*. 42(5), 422-440.
- Liang, H., Saraf, N., Hu, Q. and Xue, Y. (2007). Assimilation of enterprise systems: the effect of institutional pressures and the mediating role of top management. *MIS quarterly*. 59-87.
- Liang, J.-C. and Tsai, C.-C. (2008). Internet Self-Efficacy and Preferences Toward Constructivist Internet-based Learning Environments: A Study of Pre-school Teachers in Taiwan. *Educational Technology & Society*. 11(1), 226-237.
- Liang, J.C. and Wu, S.H. (2010). Nurses' motivations for Web-based learning and the role of Internet self-efficacy. *Innovations in Education and Teaching International*. 47(1), 25-37.
- Liao, S.-H., Chang, J.-C., Cheng, S.-C. and Kuo, C.-M. (2004). Employee relationship and knowledge sharing: A case study of a Taiwanese finance and securities firm. *Knowledge Management Research & Practice*. 2(1), 24-34.
- Liaw, S.-S., Huang, H.-M. and Chen, G.-D. (2007). Surveying instructor and learner attitudes toward e-learning. *Computers & Education*. 49(4), 1066-1080.
- Liébana-Cabanillas, F., Marinković, V. and Kalinić, Z. (2017). A SEM-neural network approach for predicting antecedents of m-commerce acceptance. *International Journal of Information Management*. 37(2), 14-24.
- Lim, H., Lee, S.-G. and Nam, K. (2007). Validating E-learning factors affecting training effectiveness. *International Journal of Information Management*. 27(1), 22-35.
- Lincoln, Y.S., Lynham, S.A. and Guba, E.G. (2011). Paradigmatic controversies, contradictions, and emerging confluences, revisited. *The Sage handbook of qualitative research*. 4, 97-128.
- Liu, I.-F., Chen, M.C., Sun, Y.S., Wible, D. and Kuo, C.-H. (2010). Extending the TAM model to explore the factors that affect Intention to Use an Online Learning Community. *Computers & education*. 54(2), 600-610.
- Liu, X. (2010). Empirical Testing of a Theoretical Extension of the Technology Acceptance Model: An Exploratory Study of Educational Wikis. *Communication Education*. 59(1), 52-69.
- Liu, Y. (2003). Developing a scale to measure the interactivity of websites. *Journal of advertising research*. 43(2), 207-216.

- Liu, Y. and Shrum, L. (2002). What is interactivity and is it always such a good thing? Implications of definition, person, and situation for the influence of interactivity on advertising effectiveness. *Journal of advertising*. 31(4), 53-64.
- Loh, P.Y.W., Lo, M.C., Wang, Y.C. and Mohd-Nor, R. (2013). Improving the level of competencies for small and medium enterprises in Malaysia through enhancing the effectiveness of E-training: a conceptual paper. *Labuan e-Journal of Muamalat and Society*. 7(1), 1 - 6.
- Lorange, P. (1996). A business school as a learning organization. *The Learning Organization*. 3(5), 5-13.
- Lowry, P.B. and Gaskin, J. (2014). Partial least squares (PLS) structural equation modeling (SEM) for building and testing behavioral causal theory: When to choose it and how to use it. *IEEE Transactions on Professional Communication*. 57(2), 123-146.
- Lu, Y., Yang, S., Chau, P.Y. and Cao, Y. (2011). Dynamics between the trust transfer process and intention to use mobile payment services: A cross-environment perspective. *Information & Management*. 48(8), 393-403.
- Luarn, P. and Juo, W.-J. (2010). The role of trust in technology within the TAM in the context of NFC mobile payment. *Journal of Information and Optimization Sciences*. 31(4), 875-896.
- Luck, D.J. and Rubin, R.S. (1987). *Marketing Research*. Prentice Hall of India Pvt. Ltd.
- Macy, M.W. and Skvoretz, J. (1998). The evolution of trust and cooperation between strangers: A computational model. *American Sociological Review*. 638-660.
- Mahdavi, A.M. and Maleki, M. (2015). Factors affecting acceptance of electronic human resource management (E-HRM) based on the Technology Acceptance Model (TAM) in organization offering educational services: Case study of Alzahra University. *Jurnal UMP Social Sciences and Technology Management Vol.* 3(3).
- Makgato, S. and Bankole, F.O. (2016). The Impact of Perceived Government Support on e-training Adoption by Municipality Employees.
- Marangunić, N. and Granić, A. (2015). Technology acceptance model: a literature review from 1986 to 2013. *Universal Access in the Information Society*. 14(1), 81-95.

- Maria Correia Loureiro, S., Rüdiger Kaufmann, H. and Rabino, S. (2014). Intentions to use and recommend to others: An empirical study of online banking practices in Portugal and Austria. *Online Information Review*. 38(2), 186-208.
- Marriott, H.R. and Williams, M.D. (2016). Developing a Theoretical Model to Examine Consumer Acceptance Behavior of Mobile Shopping. *Conference on e-Business, e-Services and e-Society*. 261-266.
- Marzuki, M.I.I., Rosly, A.N., Roslan, N.S., Abdullah, D., Kamal, S.B.M. and Azmi, A. (2016). The Role of Perceived Interactivity, Perceived Ease of Use, Perceived Usefulness, and Perceived Enjoyment toward Intention to Use Online Mapping Service Applications.
- Masa'd, F.M.S. (2017). Implementation of E-Training in Developing Country: Empirical Evidence from Jordan. *International Business Research*. 10(4), 42.
- Masum, A.K.M., Kabir, M.J. and Chowdhury, M.M. (2015). Determinants that Influencing the Adoption of E-HRM: An Empirical Study on Bangladesh. *Asian Social Science*. 11(21), 117.
- Mbarek, R. (2011). Individual and perceptual characteristics influences on e-learning outcomes. *Communications of the IBIMA*.
- (2002). *A training needs assessment for the united way of Dunn County Wisconsin*. Citeseer.
- Mckay, E. and Vilela, C. (2011). Corporate sector practice informs online workforce training for Australian government agencies: Towards effective educational-learning systems design. *Australian Journal of Adult Learning*. 51(2), 302.
- Mcnabb, D. (2013). *Research methods in public administration and nonprofit management: Quantitative and qualitative approaches*. New York, NY: ME Sharpe. Inc. Print.
- Md Nor, K. and Pearson, J. (2007). The Influence of Trust on Internet Banking Acceptance. *Journal of Internet Banking and Commerce*. 12(2), 1-10.
- Merete Hagen, J. and Albrechtsen, E. (2009). Effects on employees' information security abilities by e-learning. *Information Management & Computer Security*. 17(5), 388-407.
- Meskill, D. (2007). New opportunities for involving citizens in the democratic process. *The USA Services Intergovernmental Newsletter*. (20).

- Migiro, S.O. (2006). Diffusion of ICTs and E-commerce adoption in manufacturing SMEs in Kenya. *South African Journal of Libraries and Information Science*. 72(1), 35-44.
- Mohammadyari, S. and Singh, H. (2015). Understanding the effect of e-learning on individual performance: The role of digital literacy. *Computers & Education*. 82, 11-25.
- Mohsin, M. and Sulaiman, R. (2013). A Study on E-Training Adoption for Higher Learning Institutions. *International Journal of Asian Social Science*. 3(9), 2006-2018.
- Montazemi, A.R. and Saremi, H.Q. (2013). Factors affecting Internet banking pre-usage expectation formation. *System Sciences (HICSS), 2013 46th Hawaii International Conference on*. 4666-4675.
- Mooghali, A. and Mirghaderi, S.S. (2012). Employees' Intention to Use Web-based Training in South Zagros Oil and Gas Production Company, a Causal Model. *Life Science Journal*. 9(2).
- Moore, M.G. (2002). Editorial, what does research say about the learners using computer-mediated communication in distance learning? *The American Journal of Distance Education*. 16(2), 61-64.
- Moreno, V., Cavazotte, F. and Alves, I. (2016). Explaining university students' effective use of e-learning platforms. *British Journal of Educational Technology*.
- Mou, J., Shin, D.-H. and Cohen, J. (2017). Understanding trust and perceived usefulness in the consumer acceptance of an e-service: A longitudinal investigation. *Behaviour & Information Technology*. 36(2), 125-139.
- Ngozi Anasi, S. and Ali, H. (2014). Academic librarians' perceptions of the benefits and challenges of adopting e-learning for continuing professional development in Lagos state, Nigeria. *New Library World*. 115(7/8), 340-354.
- Nitzl, C., Roldan, J.L. and Cepeda, G. (2016). Mediation analysis in partial least squares path modeling: Helping researchers discuss more sophisticated models. *Industrial management & data systems*. 116(9), 1849-1864.
- Nkechinyere, A.M. (2011). Supporting Learning in the Digital Age: E-Learning Strategies for NOUN (National Open University of Nigeria). *Online Submission*.
- Nneka Eke, H. (2010). The perspective of e-learning and libraries in Africa: challenges and opportunities. *Library Review*. 59(4), 274-290.

- Nuc (2015). List of Approved Universities in Nigeria. *In: National University Commission, N. (ed.) Monday Bulletin*. Abuja: NUC.
- Nunnally, J.C. and Bernstein, I.H. (1994). *Psychometric theory* 3rd ed. ed. New York, McGraw Hill.
- Nwagwu, E., Williams and Okafor, J.-L. (2014). Diffusion of ebooks among postgraduate students of the University of Ibadan, Nigeria. *Library Review*. 63(1/2), 86-109.
- Nwezeh, C.M. (2010a). The impact of internet use on teaching, learning and research activities in Nigerian universities: a case study of Obafemi Awolowo University. *Electronic Library, The*. 28(5), 688-701.
- Nwezeh, C.M.T. (2010b). The impact of internet use on teaching, learning and research activities in Nigerian universities. *The Electronic Library*. 28(5), 688-701.
- Nwogo, E. (2009). Digitizing projects in developing countries: the case of the University of Nigeria. *Library Hi Tech News*. 26(5/6), 14-15.
- Ofuyatan, O., Opaluwa, E. and Adeola, A. (2014). Challenges And Effects of E-Learning in the Development of Architecture and Engineering in Nigeria's Private Tertiary Institution. *Developing Country Studies*. 4(23), 130-134.
- Ogbulafor, C. (2011). Motivation and job performance of academic staff of state universities in Nigeria: the case of Ibrahim Badamasi Babangida University, Lapai, Niger State. *International Journal of Business and Management*. 14(7).
- Ogunsola, L. and Aboyade, W. (2005). Information and communication technology in Nigeria: Revolution or evolution. *Journal of Social science*. 11(1), 7-14.
- Okiki, C.O. (2011). Information communication technology support for an elearning enviroment at the university of lagos, Nigeria.
- Olaniyi, S. (2006). E-learning technology: The Nigeria experience. *Shaping the Change: XXIII FIG Congress, Munich, Germany*.
- Olatokun, W.M. and Mala, A. (2006). Assessing Students' Satisfaction With an E-Learning System: Learning System: The Case Of National Open University Of Nigeria.
- Olutola, A.T. and Olatoye, O.O. (2015). Challenges of E-Learning Technologies in Nigerian University Education. *Journal of Educational and Social Research*. 5(1), 301.

- Omeire, E.U. and Omeire, C. (2014). New wine in old wine skin: an exploration of major constraints to e-government implementation in Nigeria.
- Onuka, A.O. and Durowoju, E.O. (2012). Managing Perceived Challenges of E-Learning in Nigerian Higher Education. *IAMURE International Journal of Education*. 4(1).
- Oreški, P. and Savić, I. (2013). Primary Education Teachers E-Learning Adoption. *HASSACC-Human And Social Sciences at the Common Conference*.
- Ortega Egea, J.M. and Román González, M.V. (2011). Explaining physicians' acceptance of EHCR systems: An extension of TAM with trust and risk factors. *Computers in Human Behavior*. 27(1), 319-332.
- Oshinaike, A. and Adekunmisi, S. (2012). Use of multimedia for teaching in Nigerian university system: A case study of university of Ibadan.
- Ouadahi, J. (2008). A qualitative analysis of factors associated with user acceptance and rejection of a new workplace information system in the public sector: A conceptual model. *Canadian Journal of Administrative Sciences/Revue Canadienne des Sciences de l'Administration*. 25(3), 201-213.
- Overman, S. (2004). Dow Chemical, Hewlett-Packard put e-learning to work to save time and money. *HR Magazine*. 49(2), 8-9.
- Oye, N., Salleh, M. and A Iahad, N. (2010). Holistic E-learning in Nigerian higher education institutions. *Journal of Computing*. 2(11), 20-26.
- Oye, N., Salleh, M. and Iahad, N. (2011). Challenges of E-learning in Nigerian University Education based on the experience of developed countries. *International Journal of Managing Information Technology*. 3(2), 39-48.
- Oyelaran-Oyeyinka, B. and Adeya, C.N. (2004). Internet access in Africa: empirical evidence from Kenya and Nigeria. *Telematics and Informatics*. 21(1), 67-81.
- Ozturan, M. and Kutlu, B. (2010). Employee satisfaction of corporate e-training programs. *Procedia - Social and Behavioral Sciences*. 2(2), 5561-5565.
- Pai, F.-Y. and Huang, K.-I. (2011). Applying the technology acceptance model to the introduction of healthcare information systems. *Technological Forecasting and Social Change*. 78(4), 650-660.
- Pai, F.-Y. and Yeh, T.-M. (2014). The effects of information sharing and interactivity on the intention to use social networking websites. *Quality & Quantity*. 48(4), 2191-2207.

- Pallant, J. (2010). A step by step guide to data analysis using the SPSS program. *SPSS survival manual 4th ed. Australia: Allen and Unwin Books.*
- Panneerselvam, R. (2004). *Research methodology.* PHI Learning Pvt. Ltd.
- Papadopoulos, T., Stamati, T. and Nopparuch, P. (2013). Exploring the determinants of knowledge sharing via employee weblogs. *International Journal of Information Management.* 33(1), 133-146.
- Park, N., Rhoads, M., Hou, J. and Lee, K.M. (2014). Understanding the acceptance of teleconferencing systems among employees: An extension of the technology acceptance model. *Computers in Human Behavior.* 39, 118-127.
- Pavlou, P.A. (2003). Consumer acceptance of electronic commerce: Integrating trust and risk with the technology acceptance model. *International journal of electronic commerce.* 7(3), 101-134.
- Peat, J. and Barton, B. (2005). *Medical Statistics: A Guide to Data Analysis and Critical Appraisal.* 2005. Malden, Massachusetts: Blackwell CrossRef Google Scholar.
- Peng, H., Su, Y.J., Chou, C. and Tsai, C.C. (2009). Ubiquitous knowledge construction: Mobile learning re-defined and a conceptual framework. *Innovations in Education and Teaching international.* 46(2), 171-183.
- Pengnate, S.F. and Sarathy, R. (2017). An experimental investigation of the influence of website emotional design features on trust in unfamiliar online vendors. *Computers in Human Behavior.* 67, 49-60.
- Phatthana, W. and Mat, N.K.N. (2011). The Application of Technology Acceptance Model (TAM) on health tourism e-purchase intention predictors in Thailand. *2010 International Conference on Business and Economics Research, IACSIT Press, Kuala Lumpur, Malaysia.* 196-199.
- Phichitchaisopa, N. and Naenna, T. (2013). Factors affecting the adoption of healthcare information technology. *EXCLI journal.* 12, 413.
- Phiri, A.C., Foko, T. and Mahwai, N. (2014). Evaluation of a pilot project on information and communication technology for rural education development: A Cofimvaba case study on the educational use of tablets. *International Journal of Education and Development using Information and Communication Technology.* 10(4), 60.
- Podsakoff, P.M., Mackenzie, S.B., Lee, J.-Y. and Podsakoff, N.P. (2003). Common method biases in behavioral research: a critical review of the literature and recommended remedies. *Journal of applied psychology.* 88(5), 879.

- Popescu, D., Avramescu, E.T., Popescu, L.C., Pascual, J.L., Pratikakis, I., Perantonis, S. and Lupescu, O. (2014). A Web-based E-training Platform for biomedical engineering education. *Electrical and Power Engineering (EPE), 2014 International Conference and Exposition on.* 162-167.
- Purnomo, S.H. and Lee, Y.-H. (2013). E-learning adoption in the banking workplace in Indonesia an empirical study. *Information Development.* 29(2), 138-153.
- Qutaishat, F.T. (2012). Users' perceptions towards website quality and its effect on intention to use e-government services in Jordan. *International Business Research.* 6(1), 97.
- Ramayah, T., Ahmad, N.H. and Hong, T.S. (2012). An Assessment of E-training Effectiveness in Multinational Companies in Malaysia. *Educational Technology & Society.* 15(2), 125-137.
- Ramayah, T., Cheah, J., Chuah, F., Ting, H. and Meman, M.A. (2016). *Partial Least Squares Structural Equation Modeling (PLS-SEM) using SmartPLS 3.0.* Pearson Malaysia Sdn Bhd, Kuala Lumpur.
- Ramayah, T., Ling, C.Y., Suki, N.M., Ibrahim, A. and Teknologi, F.P. (2005). Determinants of Intention to Use an Online Bill Payment System among MBA Students.
- Ramkumar, M. and Jenamani, M. (2015). Organizational Buyers' Acceptance of Electronic Procurement Services—An Empirical Investigation in Indian Firms. *Service Science.* 7(4), 272-293.
- Raoprasert, T. and Islam, S.M. (2010). *Designing an Efficient Management System: Modeling of Convergence Factors Exemplified by the Case of Japanese Businesses in Thailand.* Springer.
- Rasouli, R., Mooghali, A., Mousavi, M. and Rashidi, M. (2013). Designing and explaining the model of knowledge workers' retention with emphasis on HRM practices. *Management Science Letters.* 3(4), 1145-1154.
- Reid, M. and Levy, Y. (2008). Integrating trust and computer self-efficacy with TAM: An empirical assessment of customers' acceptance of banking information systems (BIS) in Jamaica. *Journal of Internet Banking and Commerce.* 12(3), 1-17.
- Revels, J., Tojib, D. and Tsarenko, Y. (2010). Understanding consumer intention to use mobile services. *Australasian Marketing Journal (AMJ).* 18(2), 74-80.
- Ringle, C.M., Wende, S. and Will, A. (2005). SmartPLS (Version 2.0 (beta)). *Hamburg, Germany.*

- Robson, C. (2002). *Real world research. 2nd. Edition. Blackwell Publishing. Malden.*
- Roca, J.C. and Gagné, M. (2008). Understanding e-learning continuance intention in the workplace: A self-determination theory perspective. *Computers in Human Behavior. 24(4)*, 1585-1604.
- Rotchanakitumnuai, S. and Speece, M. (2009). Modeling electronic service acceptance of an e-securities trading system. *Industrial Management & Data Systems. 109(8)*, 1069-1084.
- Rouibah, K., Hamdy, H.I. and Al-Enezi, M.Z. (2009). Effect of management support, training, and user involvement on system usage and satisfaction in Kuwait. *Industrial Management & Data Systems. 109(3)*, 338-356.
- Roy, A., Borbora, Z.H. and Srivastava, J. (2013). Socialization and trust formation: A mutual reinforcement? An exploratory analysis in an online virtual setting. *Advances in Social Networks Analysis and Mining (ASONAM), 2013 IEEE/ACM International Conference on. 653-660.*
- Rym, B., Olfa, B. and Mélika, B.M.B. (2013). Determinants of E-Learning Acceptance: An Empirical Study in the Tunisian Context. *American Journal of Industrial and Business Management. 3(03)*, 307.
- Sadaf, A., Newby, T.J. and Ertmer, P.A. (2016). An investigation of the factors that influence preservice teachers' intentions and integration of Web 2.0 tools. *Educational Technology Research and Development. 64(1)*, 37-64.
- Sánchez, R.A. and Hueros, A.D. (2010). Motivational factors that influence the acceptance of Moodle using TAM. *Computers in human behavior. 26(6)*, 1632-1640.
- Sarabdeen, J., Rodrigues, G. and Balasubramanian, S. (2014). E-Government users' privacy and security concerns and availability of laws in Dubai. *International Review of Law, Computers & Technology. 28(3)*, 261-276.
- Sarstedt, M., Ringle, C.M., Smith, D., Reams, R. and Hair, J.F. (2014). Partial least squares structural equation modeling (PLS-SEM): A useful tool for family business researchers. *Journal of Family Business Strategy. 5(1)*, 105-115.
- Saunders, M.N. (2011). *Research methods for business students, 5/e.* Pearson Education India.
- Schumacker, R.E. and Lomax, R.G. (2004). *A beginner's guide to structural equation modeling.* Psychology Press.

- Sekaran, U. (2003). *Research Methods for Business: A Skill Building Approach*. Fourth Edition ed. New York, John Willey and Sons, Inc. .
- Sekaran, U. (2006). *Research methods for business: A skill building approach*. John Wiley & Sons.
- Shaqrah, A.A. and Husain, A.H.A. (2014). A Model of Jordanian Firm's Trainees' Acceptance of A Web-Based Training. *Journal of International Technology and Information Management*. 23(2), 3.
- Sharma, R. and Yetton, P. (2003). The contingent effects of management support and task interdependence on successful information systems implementation. *MIS quarterly*. 533-556.
- Sharma, S.K., Al-Badi, A.H., Govindaluri, S.M. and Al-Kharusi, M.H. (2016). Predicting motivators of cloud computing adoption: A developing country perspective. *Computers in Human Behavior*. 62, 61-69.
- Shen, J. and Eder, L.B. (2009). Intentions to use virtual worlds for education. *Journal of Information Systems Education*. 20(2), 225.
- Shih, Y.-Y. and Huang, S.-S. (2009). The actual usage of ERP systems: An extended technology acceptance perspective. *Journal of Research and Practice in Information Technology*. 41(3), 263.
- Shook, C.L., Ketchen, D.J., Hult, G.T.M. and Kacmar, K.M. (2004). An assessment of the use of structural equation modeling in strategic management research. *Strategic management journal*. 25(4), 397-404.
- Shum, P.-S., Land, L. and Dick, G. (2009). Exploring Lecturers' Acceptance Of Online Media For Teaching.
- Singh, B.S. and Malhotra, M. (2015). The Mediating Role of Trust in the relationship between Perceived Organizational Support and Silence. *International Journal of Scientific and Research Publications*. 5(9), 1-10.
- Singh, H. and Singh, B.P. (2015). E-Training: An assessment tool to measure business effectiveness in a business organization. *Computing for Sustainable Global Development (INDIACom), 2015 2nd International Conference on*, 1229-1231.
- Singh, S. and Srivastava, S. (2017). The effect of shopping platform and product type on antecedents of online consumer behaviour—A proposed framework. *Journal of Internet Banking and Commerce*. 22(S8).

- Sledgianowski, D. and Kulviwat, S. (2009). Using social network sites: The effects of playfulness, critical mass and trust in a hedonic context. *Journal of Computer Information Systems*. 49(4), 74-83.
- Spitzeck, H. and Chapman, S. (2012). Creating shared value as a differentiation strategy - the example of BASF in Brazil. *Corporate Governance*. 12(4), 499-513.
- Stone, M. (1974). Cross-validatory choice and assessment of statistical predictions. *Journal of the royal statistical society. Series B (Methodological)*. 111-147.
- Strother, J.B. (2002). An assessment of the effectiveness of e-learning in corporate training programs. *The International Review of Research in Open and Distributed Learning*. 3(1).
- Šumak, B., Heričko, M. and Pušnik, M. (2011). A meta-analysis of e-learning technology acceptance: The role of user types and e-learning technology types. *Computers in Human Behavior*. 27(6), 2067-2077.
- Sun, P.-C., Tsai, R.J., Finger, G., Chen, Y.-Y. and Yeh, D. (2008). What drives a successful e-Learning? An empirical investigation of the critical factors influencing learner satisfaction. *Computers & Education*. 50(4), 1183-1202.
- Tabachnick, B.G., Fidell, L.S. and Osterlind, S.J. (2001). Using multivariate statistics.
- Tan, E. and Leby Lau, J. (2016). Behavioural intention to adopt mobile banking among the millennial generation. *Young Consumers*. 17(1), 18-31.
- Tanduklangi, A. (2017). Determinants of User Intention in Using e-Learning Technology in Indonesian Context: An Empirical Study. *Mediterranean Journal of Social Sciences*. 8(3), 69.
- Tarhini, A., Hone, K. and Liu, X. (2014). The effects of individual differences on e-learning users' behaviour in developing countries: A structural equation model. *Computers in Human Behavior*. 41, 153-163.
- Teo, T. (2011). Factors influencing teachers' intention to use technology: Model development and test. *Computers & Education*. 57(4), 2432-2440.
- Teo, T. (2016). Modelling Facebook usage among university students in Thailand: the role of emotional attachment in an extended technology acceptance model. *Interactive Learning Environments*. 24(4), 745-757.
- Teo, T., Milutinović, V., Zhou, M. and Banković, D. (2016). Traditional vs. innovative uses of computers among mathematics pre-service teachers in Serbia. *Interactive Learning Environments*. 1-17.

- Teo, T. and Noyes, J. (2011). An assessment of the influence of perceived enjoyment and attitude on the intention to use technology among pre-service teachers: A structural equation modeling approach. *Computers & Education*. 57(2), 1645-1653.
- Teo, T. and Zhou, M. (2014). Explaining the intention to use technology among university students: a structural equation modeling approach. *Journal of Computing in Higher Education*. 26(2), 124-142.
- Thelen, A.C., Herr, S.D., Hees, F. and Jeschke, S. (2011). *Microtraining for Workplace-Related Learning*. In: Jeschke, S., Isenhardt, I. and Henning, K. (Ed.) *Automation, Communication and Cybernetics in Science and Engineering 2009/2010*. (pp. 347-357). Berlin, Heidelberg: Springer Berlin Heidelberg.
- Tsai, M.-T., Cheng, N.-C. and Chen, K.-S. (2011). Understanding online group buying intention: the roles of sense of virtual community and technology acceptance factors. *Total Quality Management & Business Excellence*. 22(10), 1091-1104.
- Tsai, T.-H., Chang, H.-T. and Ho, Y.-L. (2016). Perceptions of a Specific Family Communication Application among Grandparents and Grandchildren: An Extension of the Technology Acceptance Model. *PLoS ONE*. 11(6), e0156680.
- Tung, F.-C., Chang, S.-C. and Chou, C.-M. (2008). An extension of trust and TAM model with IDT in the adoption of the electronic logistics information system in HIS in the medical industry. *International journal of medical informatics*. 77(5), 324-335.
- Turčáni, M. and Magdin, M. (2012). The impact of interactivity on students results when passing through an e-learning course. *DIVAI 2012*.
- Umeagukwu, E. and Ngozi, E. (2014). An Analysis of ICT impact on the Curricular of Major Nigerian Universities in the Last Ten Years 2003-2013. *International Journal of Science and Technology*. 3(1).
- Urbach, N. and Ahlemann, F. (2010). Structural equation modeling in information systems research using partial least squares. *JITTA: Journal of Information Technology Theory and Application*. 11(2), 5.
- Van Raaij, E.M. and Schepers, J.J.L. (2008). The acceptance and use of a virtual learning environment in China. *Computers & Education*. 50(3), 838-852.
- Vance, A., Elie-Dit-Cosaque, C. and Straub, D.W. (2008). Examining trust in information technology artifacts: the effects of system quality and culture. *Journal of management information systems*. 24(4), 73-100.

- Venezky, R.L. and Davis, C. (2002). Quo vademus? The transformation of schooling in a networked world. *Version 8c. OECD Centre for Educational Research and Innovation, Paris.*(www.oecd.org/pdf/M00027000/M00027107.pdf).
- Venkatesh, V. and Bala, H. (2008). Technology acceptance model 3 and a research agenda on interventions. *Decision sciences*. 39(2), 273-315.
- Venkatesh, V. and Davis, F.D. (2000). A theoretical extension of the technology acceptance model: Four longitudinal field studies. *Management science*. 46(2), 186-204.
- Venkatesh, V., Morris, M.G., Davis, G.B. and Davis, F.D. (2003). User acceptance of information technology: Toward a unified view. *MIS quarterly*. 425-478.
- Venkatesh, V., Thong, J.Y., Chan, F.K., Hu, P.J.H. and Brown, S.A. (2011). Extending the two-stage information systems continuance model: Incorporating UTAUT predictors and the role of context. *Information Systems Journal*. 21(6), 527-555.
- Voorhees, C.M., Brady, M.K., Calantone, R. and Ramirez, E. (2016). Discriminant validity testing in marketing: an analysis, causes for concern, and proposed remedies. *Journal of the Academy of Marketing Science*. 44(1), 119-134.
- Walker, S.K. and Kim, H. (2015). Family Educators' Technology Use and Factors Influencing Technology Acceptance Attitudes. *Family and Consumer Sciences Research Journal*. 43(4), 328-342.
- Wang, C.-C. (2017). Factors influencing the adoption of online group-buying in virtual community. *Multimedia Tools and Applications*. 1-18.
- Wang, C.-Y., Chou, S.-C.T. and Chang, H.-C. (2009). Examining the impacts of perceived value and perceived quality on users' intention to join web 2.0 communities. *Proceedings of the 11th International Conference on Electronic Commerce*. Taipei, Taiwan, 329-334.
- Wang, H., Meng, Y. and Wang, W. (2013). The role of perceived interactivity in virtual communities: building trust and increasing stickiness. *Connection Science*. 25(1), 55-73.
- Wang, M. (2011). Integrating organizational, social, and individual perspectives in Web 2.0-based workplace e-learning. *Information Systems Frontiers*. 13(2), 191-205.
- Wang, S., Dong, P.-H. and Shao, S. (2017). Research on Influencing Factors of Employees' Acceptance of MOOC Training. *Management Information and Optoelectronic Engineering: Proceedings of the 2016 International*

Conference on Management, Information and Communication (ICMIC2016) and the 2016 International Conference on Optics and Electronics Engineering (ICOEE2016). 197-203.

- Wang, W.-T. and Wang, C.-C. (2009). An empirical study of instructor adoption of web-based learning systems. *Computers & Education*. 53(3), 761-774.
- Wu, G., Hu, X. and Wu, Y. (2010). Effects of Perceived Interactivity, Perceived Web Assurance and Disposition to Trust on Initial Online Trust. *Journal of Computer-Mediated Communication*. 16(1), 1-26.
- Wu, G. and Wu, G. (2006). Conceptualizing and measuring the perceived interactivity of websites. *Journal of Current Issues & Research in Advertising*. 28(1), 87-104.
- Wu, J.-J. and Chang, Y.-S. (2005). Towards understanding members' interactivity, trust, and flow in online travel community. *Industrial Management & Data Systems*. 105(7), 937-954.
- Wu, K., Zhao, Y., Zhu, Q., Tan, X. and Zheng, H. (2011). A meta-analysis of the impact of trust on technology acceptance model: Investigation of moderating influence of subject and context type. *International Journal of Information Management*. 31(6), 572-581.
- Wu, M., Jayawardhena, C. and Hamilton, R. (2014). A comprehensive examination of internet banking user behaviour: evidence from customers yet to adopt, currently using and stopped using. *Journal of Marketing Management*. 30(9-10), 1006-1038.
- Wu, W., Chang, H.-P. and Guo, C.-J. (2008). An empirical assessment of science teachers' intentions toward technology integration. *The Journal of Computers in Mathematics and Science Teaching*. 27(4), 499.
- Yan, H. and Yang, Z. (2015). Examining mobile payment user adoption from the perspective of trust. *International Journal of u-and e-Service, Science and Technology*. 8(1), 117-130.
- Ye, L., Chen, Z. and Li, X. (2012). A study of impacts on online purchase behaviour: information richness and website interactivity perspectives. *International Journal of Services Technology and Management*. 18(1-2), 3-15.
- Yee-Loong Chong, A., Ooi, K.-B., Lin, B. and Tan, B.-I. (2010). Online banking adoption: an empirical analysis. *International Journal of Bank Marketing*. 28(4), 267-287.

- Yin, R. (1994). *Case study research: Design and methods*. Beverly Hills, CA: Sage publishing.
- Yin, R.K. (2003). *Case study research: Design and methods*. Sage.
- Yoo, S.J., Han, S.-H. and Huang, W. (2012). The roles of intrinsic motivators and extrinsic motivators in promoting e-learning in the workplace: A case from South Korea. *Computers in Human Behavior*. 28(3), 942-950.
- Yoon, C. (2009). The effects of national culture values on consumer acceptance of e-commerce: Online shoppers in China. *Information & Management*. 46(5), 294-301.
- Young, J.R. (1997). Rethinking the Role of the Professor in an Age of High-Tech Tools. *Chronicle of Higher Education*. 44(6).
- Yu, U.-J. and Damhorst, M.L. (2015). Body Satisfaction as Antecedent to Virtual Product Experience in an Online Apparel Shopping Context. *Clothing and Textiles Research Journal*. 33(1), 3-18.
- Yusoff, Y.M., Ramayah, T. and Othman, N.-Z. (2015). Why Examining Adoption Factors, HR Role and Attitude towards Using E-HRM is the Start-Off in Determining the Successfulness of Green HRM? *Journal of Advanced Management Science Vol.* 3(4).
- Zailani, S., Iranmanesh, M., Nikbin, D. and Beng, J.K.C. (2014). Determinants of RFID Adoption in Malaysia's Healthcare Industry: Occupational Level as a Moderator. *Journal of Medical Systems*. 39(1), 172.
- Zainab, B., Bhatti, M.A. and Pangil, F. (2017). An examination of the factors affecting the adoption of E-training in the Nigerian civil service sector. *Global Business and Organizational Excellence*. 36(4), 33-42.
- Zainab, B., Bhatti, M.A., Pangil, F.B. and Battour, M.M. (2015). E-training adoption in the Nigerian civil service. *European Journal of Training and Development*. 39(6), 538-564.
- Zaman, S., Khawaja, K.F. and Waqar, S. (2013). Impact of service Quality Perceived Risk, Perceived Privacy and Security and Perceived Trust on technology acceptance model: An empirical study based on online banking sector of Pakistan. *Information Assurance (NCIA), 2013 2nd National Conference on*. 11-12 Dec. 2013. 89-94.
- Zarmpou, T., Saprikis, V., Markos, A. and Vlachopoulou, M. (2012). Modeling users' acceptance of mobile services. *Electronic Commerce Research*. 12(2), 225-248.

- Zhao, X., Lynch, J.G. and Chen, Q. (2010). Reconsidering Baron and Kenny: Myths and truths about mediation analysis. *Journal of consumer research*. 37(2), 197-206.
- Zhou, T. (2011a). The effect of initial trust on user adoption of mobile payment. *Information Development*. 27(4), 290-300.
- Zhou, T. (2011b). Examining the critical success factors of mobile website adoption. *Online Information Review*. 35(4), 636-652.
- Zhou, T. (2015). Understanding user adoption of location-based services from a dual perspective of enablers and inhibitors. *Information Systems Frontiers*. 17(2), 413-422.
- Zikmund, W. (2003). *Exploring Research Methods*. 7th ed. ed.: Ohio: Thomson, South Western.