

SEQUENCE OF IMAGE ENHANCEMENT OF FLAT
ELECTROENCEPHALOGRAPHY USING INTUITIONISTIC
FUZZY SET

SUZELAWATI BINTI ZENIAN

UNIVERSITI TEKNOLOGI MALAYSIA

SEQUENCE OF IMAGE ENHANCEMENT OF FLAT
ELECTROENCEPHALOGRAPHY USING INTUITIONISTIC
FUZZY SET

SUZELAWATI BINTI ZENIAN

A thesis submitted in fulfilment of the
requirements for the award of the degree of
Doctor of Philosophy (Mathematics)

Faculty of Science
Universiti Teknologi Malaysia

FEBRUARY 2018

To my beloved son Adam Mikael and my family

ACKNOWLEDGEMENT

First and foremost, praise be to Allah for giving me good health, strength and patience throughout these years to complete this thesis and for that I would like to express my greatest gratitude. Throughout this journey, many individuals have come along and assisted me into completing this thesis with success. My warmest and sincerest appreciation and gratitude to my supervisor, Prof. Dr. Tahir Ahmad and co-supervisor, Dr. Amidora Idris for the continuous guidance, support, encouragement, and always been a great source of inspiration throughout the research. They have led me into their world and coach me from the beginning until now.

I would like to gratefully thank Prof. Dr. Reza Saatchi and Assoc. Prof. Dr. Normah Maan for their guidance through valuable comments in producing a good thesis. My appreciation is also extended to Mr (Dr) Mohd. Sofan Zenian, Neurosurgeon, Neurosurgery Department, Queen Elizabeth Hospital, Kota Kinabalu, for his valuable advice and suggestions. Thank you so much to my beloved family for their endless support. There are simply no words to describe my appreciation for all the help and guidance you have given me from the very beginning of my career until now. Without your guidance, I would not have been where I am today.

My heartfelt thank you to the Ministry of Higher Education Malaysia and Universiti Malaysia Sabah for granting the scholarship and permission to pursue my studies under SLAI. Also to all the members of the Fuzzy Research Group (FRG), Department of Mathematics, and Ibnu Sina Institute for Scientific and Industrial Research, Universiti Teknologi Malaysia whom I have the honour to work with during my time in UTM. Special thanks to my colleagues and friends. To everyone mentioned above, you have inspired me to be a better person through your excellence and continuous dedication. Thank you.

ABSTRACT

This study focused on contrast enhancement of Flat Electroencephalography (fEEG) image during epileptic seizure. The main interest is in visualizing the path of brainstorm in the brain that occur during seizure. Selected techniques that are involved ranging from classical, ordinary fuzzy, and advanced fuzzy namely the intuitionistic fuzzy sets (IFS). Different techniques may result in different output of fEEG image. The methods in classical approach are Power Law Transformation, Histogram Equalization, and Image Size Dependent Normalization. The intensifier operator is implemented in the fuzzy contrast enhancement technique. For the IFS approach, the Window Based Enhancement Scheme (WBES) and its revised version (RWBES) are applied. The RWBES gives better results compared to the WBES whereby the vague boundary of the cluster centres are reduced resulting in a smaller area of the vague boundary. The vague boundary represents the strength of the electrical potential of the foci of seizure. Next, the quality of the output image is measured via the objective measure such as mean squared error (MSE), peak-signal-to-noise-ratio (PSNR), universal image quality index (UIQI), and structural similarity index measure (SSIM). In IFS, the sum of membership and non-membership is not necessarily equal to one. Thus, there exists hesitancy in deciding the degree to which an element satisfies a particular property. Moreover, the sequence of enhanced fEEG images are demonstrated by varying the value of parameter, namely λ , that also influence the hesitation value π . In addition, the Sugeno type intuitionistic fuzzy generator which is used to compute the non-membership value ν has been extended to the concept of fuzzy limit. Hence, by implementing the definition of fuzzy limit, different values of ϵ will be tested in obtaining the values of integer N that will determine the value of λ and hence the value of hesitation π . The relationship between membership, non-membership, and hesitation values are also demonstrated graphically.

ABSTRAK

Kajian ini memfokuskan kepada penambahbaikan kontras bagi imej Elektroensifalografi Meleper (fEEG) semasa serangan sawan. Kepentingan utama adalah untuk menggambarkan laluan ribut otak dalam otak semasa berlakunya sawan. Teknik-teknik terpilih yang terlibat berbagai-bagai dari klasik, kabur biasa, dan kabur lanjutan iaitu set kabur intuisinistik (IFS). Teknik berbeza akan memberikan imej output fEEG yang berbeza. Kaedah pendekatan klasik adalah Transformasi Hukum Kuasa, Penyamaan Histogram, dan Normalisasi Berdasarkan Saiz Imej. Pengoperasi keamatan diimplementasi dalam teknik penambahbaikan kontras kabur. Untuk pendekatan IFS, Skim Penambahbaikan Berasaskan Tetingkap (WBES) dan versinya yang disamak semula (RWBES) digunakan. RWBES memberikan keputusan yang lebih baik berbanding WBES yang mana sempadan kabur bagi pusat gugusan dikurangkan, lalu menghasilkan kawasan yang lebih kecil bagi sempadan kabur tersebut. Sempadan kabur tersebut mewakili kekuatan potensi elektrik bagi pusat sawan. Seterusnya, kualiti imej output diukur menerusi ukuran objektif seperti min ralat kuasa dua (MSE), nisbah isyarat puncak kepada hingar (PSNR), indeks kualiti imej universal (UIQI), dan ukuran indeks kesamaan struktur (SSIM). Dalam IFS, hasil tambah keahlian dan bukan keahlian tidak semestinya bersamaan dengan satu. Oleh itu, keraguan wujud dalam menentukan darjah bagi suatu unsur memenuhi sesuatu sifat tertentu. Selanjutnya, jujukan imej fEEG yang telah ditambahbaik dipamerkan dengan mengubah-ubah nilai parameter, iaitu λ , yang juga akan mempengaruhi nilai keraguan π . Tambahan pula, penjana intuisinistik kabur jenis Sugeno yang digunakan untuk mengira nilai bukan keahlian ν telah dilanjutkan kepada konsep had kabur. Seterusnya, dengan mengimplementasi definisi had kabur, nilai ϵ yang berbeza akan diuji untuk memperolehi nilai integer N yang akan menentukan nilai bagi λ dan seterusnya nilai keraguan π . Hubungan antara nilai keahlian, bukan keahlian, dan keraguan turut dipamerkan secara graf.

TABLE OF CONTENTS

CHAPTER	TITLE	PAGE
	DECLARATION	ii
	DEDICATION	iii
	ACKNOWLEDGEMENT	iv
	ABSTRACT	v
	ABSTRAK	vi
	TABLE OF CONTENTS	vii
	LIST OF TABLES	xi
	LIST OF FIGURES	xii
	LIST OF SYMBOLS	xvii
	LIST OF ABBREVIATIONS	xix
	LIST OF APPENDICES	xx
1	INTRODUCTION	1
	1.1 Introduction	1
	1.2 Research Background	1
	1.3 Problem Statement	3
	1.4 Research Questions	4
	1.5 Research Objectives	4
	1.6 Scope of Research	5
	1.7 Significant Contributions	5
	1.8 Research Framework	8

2	LITERATURE REVIEW	10
2.1	Introduction	10
2.2	Human Brain	10
2.3	Seizures	19
2.3.1	Classification based on type	19
2.3.2	Classification based on etiology	20
2.3.3	Classification based on epileptic syndromes	21
2.3.4	Pathophysiology of seizure	22
2.4	Digital Image Processing	23
2.5	Fuzzy Image Processing	31
2.6	Intuitionistic Fuzzy Image Processing	33
2.7	Image Enhancement	37
2.8	Noise	41
2.9	Medical Imaging	42
2.10	Electroencephalography	47
2.11	Implementation of Intuitionistic Fuzzy Set in Medical Images	52
2.12	Conclusion	59
3	MATHEMATICAL BACKGROUND	60
3.1	Introduction	60
3.2	Classical Set	61
3.3	Fuzzy Set	62
3.4	Intuitionistic Fuzzy Set	63
3.5	Sequence of Fuzzy Numbers	66
3.6	Flat EEG (fEEG)	67
3.7	Digital fEEG	71
3.8	Image Quality Assessment	77
3.8.1	Mean Square Error (MSE)	78
3.8.2	Peak-Signal-to-Noise Ratio (PSNR)	78
3.8.3	Universal Image Quality Index (UIQI)	78

3.8.4	Structural Similarity Index Measure (SSIM)	80
3.9	Conclusion	81
4	ENHANCING fEEG IMAGE	82
4.1	Introduction	82
4.2	Contrast Enhancement of fEEG Image	82
4.3	Classical Approach	85
4.3.1	Power Law (Gamma) Transformation	85
4.3.2	Histogram Equalization	86
4.3.3	Image Size Dependent Normalization	86
4.4	Fuzzy Approach	87
4.5	IFS Approach	89
4.5.1	The WBES Procedure	89
4.5.2	Revised Version of WBES Procedure	90
4.6	Conclusion	92
5	DEMONSTRATION OF fEEG IMAGE	93
5.1	Introduction	93
5.2	fEEG Input Image	93
5.3	fEEG Output Image by Using Classical Approach	102
5.3.1	Power Law (Gamma) Transformation Output Image	102
5.3.2	Histogram Equalization Output Image	105
5.3.3	Image Size Dependent Normalization Output Image	106
5.4	Fuzzy Approach Output Image	107
5.5	IFS Approach Output Image	108
5.5.1	WBES Output Image	108
5.5.2	RWBES Output Image	112
5.6	Results for Other Datasets	121
5.7	Conclusion	122

6	fEEG IMAGE QUALITY TEST	123
6.1	Introduction	123
6.2	Performance Comparisons	123
6.3	Analysis and Discussion of Quality Test	126
6.4	SSIM Index Map for fEEG Output Image	128
6.5	Conclusion	136
7	DETERMINATION OF HESITATION VALUE	137
7.1	Introduction	137
7.2	Hesitation Value via Fuzzy Limit	137
7.3	Conclusion	143
8	CONCLUSION	145
8.1	Introduction	145
8.2	Summary of Thesis	145
8.3	Significance of Research	147
8.4	Future Work	147
	REFERENCES	149
	Appendices A - D	158–268

LIST OF TABLES

TABLE NO.	TITLE	PAGE
5.1	The location and electrical potential of cluster centres on fEEG (patient <i>A</i>)	100
6.1	Performance comparison for Power Law Transformation, $t = 1$	124
6.2	Performance comparison for Histogram Equalization, $t = 1$	124
6.3	Performance comparison for Image Size Dependent Normalization, $t = 1$	124
6.4	Performance comparison for Fuzzy Approach, $t = 1$	124
6.5	Performance comparison for WBES with 4 partitioned windows, $t = 1$	125
6.6	Performance comparison for WBES with 16 partitioned windows, $t = 1$	125
6.7	Performance comparison for RWBES with no partitioned window; fuzzification by Equation 4.6, $t = 1$	125
6.8	Performance comparison for RWBES with 4 partitioned windows; fuzzification by Equation 4.6, $t = 1$	125
6.9	Performance comparison for RWBES with no partitioned windows; fuzzification by Equation 4.7, $t = 1$	126
6.10	Performance comparison for RWBES with 4 partitioned windows; fuzzification by Equation 4.7, $t = 1$	126
7.1	Values of Parameters	140
7.2	Values of π for particular λ	140

LIST OF FIGURES

FIGURE NO.	TITLE	PAGE
1.1	Research contribution on fEEG image	7
1.2	Research framework	9
2.1	Human brain [7]	11
2.2	(a) Dorsal portion (b) Lateral portion [11]	12
2.3	(a) Ventral portion (b) Insular lobe [11]	12
2.4	Medial portion [11]	13
2.5	Specific brain functions based on cerebral lobes [9]	14
2.6	Cortical layers and neuronal organizations [9]	15
2.7	Neuronal action potential and depolarization [8]	16
2.8	Graph of action potential of the neurons [8]	17
2.9	Broadmann area of the brain [13]	17
2.10	Cortical Homunculus [11]	18
2.11	Uncinate seizure origin [11]	22
2.12	Jacksonian seizure origin [11]	22
2.13	Pixel quantization in digital image [21]	25
2.14	Image digitization [18]	26
2.15	Illustration of image sampling and quantization. (a) Original image, (b) Image under sampling, (c) Image under quantization [24]	26
2.16	An example of the digital image acquisition process. (a) Energy (illumination) source, (b) An element of a scene, (c) Imaging system, (d) Projection of the scene onto the image plane, (e) Digitized image [18]	26
2.17	Fundamental steps in digital image processing [18]	27
2.18	(a) Original image, (b) Enhanced image [18]	28

2.19	(a) Original image, (b) Restored image [18]	28
2.20	An RGB image. (a) RGB image, (b) R component, (c) G component, (d) B component [18]	29
2.21	Original image and compressed images with different coefficients [18]	29
2.22	(a) Original image, (b) Image segmented by Sobel edge detector, (c) Image segmented by Prewitt edge detector [18]	30
2.23	Structure of fuzzy image processing [22]	33
2.24	Intuitionistic fuzzy image processing framework [32]	36
2.25	Transformation of image f into image g using T [35]	38
2.26	Improving image contrast by adjusting the image histogram [39]	38
2.27	(a) Original image, (b) Edge of the image [40]	39
2.28	Noise reduction examples [41]	39
2.29	Image enhancement for brightness transformation	40
2.30	(a) Original image, (b) With added salt and pepper noise [43]	42
2.31	(a) Original image, (b) Image corrupted by Gaussian noise [24]	42
2.32	CT scan device [44]	43
2.33	CT scan images of the brain [45]	43
2.34	Medical images. (a) Ultrasound, (b) X-ray, (c) MRI [27]	44
2.35	Imperfections in medical images [47]	45
2.36	Medical image methods [47]	46
2.37	Brain imaging methods hierarchy [47]	46
2.38	An EEG system [49]	47
2.39	Post synaptic dendritic potential (current dipole) measure by EEG [52]	49
2.40	Functional magnetic resonance imaging (fMRI) [58]	50
2.41	Magnetoencephalography (MEG) [59]	50
2.42	Positron Emission Topography (PET) [60]	51
2.43	Video EEG (V-EEG) [63]	52
2.44	(a) Blood cell image, (b) FCM cluster, (c) Intuitionistic fuzzy cluster [46]	53

2.45	(a) CT scan brain image, (b) Enhancement using fuzzy method, (c) Enhancement using intuitionistic fuzzy method, (d) Enhancement using proposed intuitionistic fuzzy set [64]	54
2.46	(a) Original image, (b) Otsu method (nonfuzzy method), (c) Bustince method (IFS method), (d) Robert method (nonfuzzy method), (e) Couto method, (f) Chaira and Ray method, (g) Vlachos method, (h) Proposed method by Chaira [66]	55
2.47	(a) Brain image, (b)-(d) Chaira method, (e) Canny's method [68]	56
2.48	(a) Hestain image, (b) Bustince method, (c) Proposed Chaira's method [68]	57
3.1	Category of uncertainty [71]	61
3.2	Geometrical representation of Atanassov's IFS [33]	64
3.3	Flat EEG at different time (in seconds) [88]	68
3.4	EEG coordinate system [4]	69
3.5	EEG projection [4]	70
3.6	EEG signal [4]	71
3.7	Analyzed EEG signal [4]	71
3.8	Transformation of EEG signal	72
3.9	Voronoi digitization on fEEG x -axis [6]	73
3.10	fEEG pixels [6]	74
3.11	Fuzzy neighborhood of each cluster centre c_j of a fEEG [6]	76
3.12	fEEG image [6]	76
4.1	Classical approach	84
4.2	Fuzzy approach	84
4.3	IFS approach	85
4.4	Fuzzy contrast enhancement	88
4.5	Flowchart of the RWBES process	92
5.1	A sample of EEG signal for patient A	95
5.2	The fEEG and fEEG image for patient A at time $t = 1$ to $t = 16$	99
5.3	fEEG image at time 1 of size 11×11 , (b) Image histogram	101

5.4	Membership value of fEEG image at time 1 of size 11×11	101
5.5	(a) fEEG image at time 1 of size 201×201 (b) Image histogram	101
5.6	fEEG output image for $\gamma = 0.5$, (a) Output image (b) Image histogram	102
5.7	fEEG output image for $\gamma = 1$, (a) Output image (b) Image histogram	103
5.8	fEEG output image for $\gamma = 2$, (a) Output image (b) Image histogram	103
5.9	fEEG output image for $\gamma = 3$, (a) Output image (b) Image histogram	103
5.10	fEEG output image for $\gamma = 4$, (a) Output image (b) Image histogram	104
5.11	fEEG output image for $\gamma = 8$, (a) Output image (b) Image histogram	104
5.12	fEEG output image for $\gamma = 10$, (a) Output image (b) Image histogram	104
5.13	fEEG output image for $\gamma = 20$, (a) Output image (b) Image histogram	105
5.14	Using global histogram equalization, (a) fEEG output image (b) Image histogram	105
5.15	Using local histogram equalization, (a) fEEG output image (b) Image histogram	106
5.16	Using Image Size Dependent Normalization, (a) fEEG output image (b) Image histogram	106
5.17	Fuzzification by using Equation 4.6, (a) fEEG output image (b) Image histogram	107
5.18	Fuzzification by using Equation 4.7, (a) fEEG output image (b) Image histogram	107
5.19	fEEG output image by using WBES with 4 partitioned windows	109
5.20	Histogram by using WBES with 4 partitioned windows	110
5.21	fEEG output image by using WBES with 16 partitioned windows	111
5.22	Histogram by using WBES with 16 partitioned windows	112

5.23	fEEG output image with no partitioned window (fuzzification by Equation 4.6)	114
5.24	Histogram of Figure 5.23	115
5.25	fEEG output image by using 4 partitioned windows (fuzzification by Equation 4.6)	116
5.26	Histogram of Figure 5.25	117
5.27	fEEG output image with no partitioned window (fuzzification by Equation 4.7)	118
5.28	fEEG output image with 4 partitioned windows (fuzzification by Equation 4.7)	119
5.29	Histogram of Figure 5.27	120
5.30	Histogram of Figure 5.28	121
6.1	SSIM index map using Power Law Transformation	129
6.2	SSIM index map using global histogram equalization	129
6.3	SSIM index map using local histogram equalization	130
6.4	SSIM index map using Image Size Dependent Normalization	130
6.5	SSIM index map using fuzzy approach (fuzzification by Equation 4.6)	130
6.6	SSIM index map using fuzzy approach (fuzzification by Equation 4.7)	131
6.7	SSIM index map using WBES with 4 partitioned windows	131
6.8	SSIM index map using WBES with 16 partitioned windows	132
6.9	SSIM index map for RWBES using fuzzification by Equation 4.6 with no partitioned window	133
6.10	SSIM index map for RWBES using fuzzification by Equation 4.6 with 4 partitioned windows	134
6.11	SSIM index map for RWBES using fuzzification by Equation 4.7 with no partitioned window	135
6.12	SSIM index map for RWBES using fuzzification by Equation 4.7 with 4 partitioned windows	136
7.1	Relationship between membership, non-membership, and hesitation for tested λ (a) $\lambda = 2$, (b) $\lambda = 5$, (c) $\lambda = 10$, (d) $\lambda = 46$, (e) $\lambda = 92$	142
7.2	The output images with different values of λ	144

LIST OF SYMBOLS

Na^+	-	Sodium ion
K^+	-	Potassium ion
Ca^{++}	-	Calcium ion
Cl^-	-	Chloride ion
x_{ij}	-	Gray level at pixel (i, j)
$\mu_l(x_{ij})$	-	Membership value of the gray level x_{ij}
I	-	An image of $M \times N$ pixel
o	-	Object function that denotes the object or scene
p	-	Point-spread function
n	-	Additive noise-nondeterministic function
X	-	A set of element x_i
$\pi_A(x)$	-	The degree of non-determinacy or hesitation
$v_A(x)$	-	Non membership $v_A(x)$
N	-	Total number of pixel
σ_x	-	Standard deviations of x
σ_y	-	Standard deviations of y

r	-	Input pixel value
s	-	Output pixel value
c	-	Scaling constant
γ	-	Positive value
h	-	Frequency value
K	-	Enhancement variable
t_i	-	Time at i seconds
\mathbb{R}	-	Real number
\leq	-	Less than or equal to
\in	-	Member of
λ	-	Parameter value

LIST OF ABBREVIATIONS

EEG	-	Electroencephalography
C_{EEG}	-	EEG coordinate system
FTTM	-	Fuzzy Topographical Topological Mapping
IFS	-	Intuitionistic fuzzy set
IFIP	-	Intuitionistic fuzzy image processing
fEEG	-	Flat Electroencephalography
MSE	-	Mean square error
PSNR	-	Peak signal to noise ratio
UIQI	-	Universal image quality index
SSIM	-	Structural similarity index measure
WBES	-	Window Based Enhancement Scheme
RWBES	-	Revised Version of Window Based Enhancement Scheme
PET	-	Positron Emission Topography
MEG	-	Magnetoencephalography
I-EEG	-	Intracranial Electroencephalograph
ECoG	-	Electrocorticography
fMRI	-	Functional magnetic resonance image
CT	-	Computerized tomography
PSF	-	Point-spread function

LIST OF APPENDICES

APPENDIX	TITLE	PAGE
A	Implementation of Patient A	158
B	Implementation of Patient B	194
C	Approval Letter of Using EEG System at Hospital Kuala Lumpur	266
D	Paper Published	267

CHAPTER 1

INTRODUCTION

1.1 Introduction

The human body functions are generally controlled by two most important systems which are the nervous system and the endocrine system. Human nervous system is a very complex system, well organized, highly sophisticated with estimated at least about 100 billion of neurons and 100 trillion of interconnections or synapses involve in its networking system. It can be divided anatomically into central nervous system (CNS) which comprises the brain and spinal cord, and the peripheral nervous system (PNS) which forms the cranial and spinal rootlets. It also can be classified base on the functional status into somatic nervous system which innervates the structures of the body wall such as skin, muscles and mucous membranes or the autonomic nervous system (ANS) which innervates the smooth muscles, internal organs, blood vessels and glandular system. These systems work together to maintain body homeostasis and internal milieu state within the acceptable normal physiological condition in order to allow the hormones, enzymes, metabolism and other vital functions for life able to operate in the most optimal condition [1].

1.2 Research Background

Epilepsy is a general term used for a group of disorders that cause disturbances in electrical signalling in the brain. It is not a disease but a symptom that originated in the brain. A seizure refers to a single event of abnormal and excessive electrical discharge of group of neurons. People with multiple seizures will experience chronic

condition which is epilepsy. Epileptic foci refer to the location of the current sources that generate the corresponding magnetic fields. Electroencephalography (EEG) has been used as a system that measures and records electrical activity of the brain in graphic form [2]. It is a method of visualizing physiology to discover the hidden causes of epilepsy such that it reads voltage differences on the head relative to a given point [3].

In the preliminary study by Fuzzy Research Group (FRG) of Universiti Teknologi Malaysia (UTM) in 1999, the data sources is based only on the data collected from epileptic patients from Hospital Kuala Lumpur (HKL) and Hospital Universiti Sains Malaysia (HUSM) Kubang Kerian, Kelantan. Previous study by Zakaria [4] showed the transformation of the EEG signal during epileptic seizure into Flat Electroencephalography (fEEG) via flattening method. It is a mathematical technique that involved the mapping from high dimensional signal (i.e, EEG signal) into low dimensional space (i.e, fEEG) whereby clustering process was carried out in the study. Then the signals were transformed into discrete data by using Nicolet One software. The EEG signal was then processed by using Fuzzy *c*-means (FCM) clustering to cluster the discrete data at every second. Finally, the optimal number of clusters were obtained via cluster validity.

Moreover, previous study by Abdy [5, 6] showed the transformation of fEEG into digital fEEG and finally into image. Digitization process of fEEG by using the Voronoi digitization is implemented in obtaining the digital fEEG. Next, fuzzy approach is applied in assigning the membership value for each pixel via the quantization pixel process. Finally, the membership value is transformed into gray level value such that an image of fEEG is obtained. The main aim of the previous research by Zakaria [4] and Abdy [6] is to visualize and to trace the electrical pulses paths of the brainstorm event right from the scalp of the head to the point where they started (i.e. the foci).

In the literature, most of the images or specifically medical images are captured by using medical devices such as X-ray, MRI, CT scan, ultrasound, 3D imaging systems and so forth. The occurrence of noise in an image may be caused by the system devices or situation such as hand shaking or taking picture while moving. However the

images of fEEG are obtained without using any image processing system devices. It is a challenging task since the abnormalities are detected non-invasively.

1.3 Problem Statement

In the process of imaging and transformations such as fEEG, it is hard to avoid the inheritance of different kinds of noise during recording of the EEG signals. Since the regions of clusters in fEEG are not always defined, uncertainty might arise within every transformations. In this study, the noise is defined as the uncertainty that occur in transforming the EEG signal into image. Furthermore, the digital fEEG itself is a fuzzy object which has been proven in details in Abdy [6]. In the process of determining the membership value, uncertainty might arise due to the lack of information or knowledge which lead to the unclear boundaries of the epileptic foci.

In Abdy [6], the boundary area of the epileptic foci which is represented in the shades of gray is not well-defined. The shades of gray spread out widely since it considered the electrical potential strength. Thus, in the presence of noise, pre-processing steps such as image enhancement is needed. The objectives of image enhancement are to remove noise, to smooth non impulsive noise, and to enhance the edges or other salient structures on fEEG.

Besides that, in order to have a clearer boundary, unwanted background or unwanted object in the scene should be eliminated. Hence, enhancement is carried out in order to obtain an improved image of fEEG. Since the focus of this study is to enhance the boundary of the epileptic foci, therefore, the unwanted object or background which is the electrical potential strength will be suppressed or reduced. Previous study by Abdy [6] has implemented fuzzy set in determining the membership value of the pixels. Therefore, it is more realistic to acquire a more comprehensive element rather than ordinary fuzzy set since the ordinary fuzzy set only considers the membership value of an element. The enhancement technique that is implemented in this study is based on the intuitionistic fuzzy set (IFS) approach which considered more parameters or uncertainties compared to the ordinary fuzzy set. The IFS aims to

handling the inherent uncertainty carried by image pixels. Hence, in dealing with noise and to obtain more accurate results, more advanced techniques that considered more parameters other than membership value is needed.

1.4 Research Questions

Some of the research questions are as follows:

1. How to reduce the vague boundary of the epileptic foci?
2. How to measure the image quality of fEEG?
3. How does implementing different approaches might affect the fEEG output image?
4. To what extent the enhancement methods may help in visualizing the path of brainstorm during seizure?
5. How to determine the hesitation value via fuzzy limit?

1.5 Research Objectives

The main objectives of this study are as follows:

1. To enhance the contrast of fEEG input images in determining the epileptic foci by classical and non-classical approaches.
2. To investigate the fEEG output images by various methods such as classical and non-classical approaches.
3. To evaluate the quality of the output images via different image quality assessment.
4. To extend the concept of fuzzy generator into fuzzy limit in obtaining the hesitation parameter.

1.6 Scope of Research

The research focused mainly on enhancing the contrast of fEEG input images during epileptic seizures. The IFS approach is implemented on fEEG input images via Window Based Enhancement Scheme (WBES) and Revised Version of WBES (RWBES). Furthermore, the results are compared with selected classical and ordinary fuzzy approaches. Data that is used in this research is based on the secondary data of epileptic patients that obtained from Hospital Universiti Sains Malaysia (HUSM) and Hospital Kuala Lumpur (HKL).

1.7 Significant Contributions

In this digital era, everything is seemed to be computerized due to the rapid development in advanced technologies. The environment of medical imaging has changed dramatically from analogue to digital technology. It is important in assisting medical practitioners to diagnose different medical condition without having to undergo surgical procedure to look into various organs and areas in the body.

The contributions of the research particularly in the fEEG image is described briefly in Figure 1.1. Figure 1.1 begins with the technique of EEG whereby small and non-invasive electrode is placed on the patient's head. EEG is an aid in characterizing epilepsy and plays important role in localizing the damaged tissue. The type of the activity such as abnormal patterns (e.g. spikes and sharp waves) can be seen in the EEG signals recording.

This study has built on previous related work by Zakaria [4] and Abdy [6] which indicates the continuity of research work. Furthermore, this research adopts the techniques of image processing in enhancing the contrast of fEEG images in different domains which are the classical and non-classical. The non-classical are the ordinary fuzzy and advanced fuzzy approaches. Different contrast enhancement techniques show different fEEG output images. Fuzzy theory based technique is designed in this study to better detect epileptic seizures. The innovation of this study has brought

together medical field, mathematics, signal and image processing. It is expected to contribute greatly in these fields. This study contains a mixture of theoretical development and practical investigation.

Besides that, the RWBES is proposed in obtaining better fEEG output images. In RWBES there are two different ways of fuzzification that have been done for the fEEG input images. The RWBES able to reduce the vague boundaries of the cluster centres. It also able to preserve information of the clusters as the value of λ increased. The outcome of the fEEG images may help in determining or improving the visibility of a sharp boundary of the epileptic foci. It is expected from the results that a clearer view of the path is able to be visualized during seizure. Moreover the Sugeno type intuitionistic fuzzy generator is extended to the concept of fuzzy limit which highlights the great impact in the field of real analysis application in image processing.

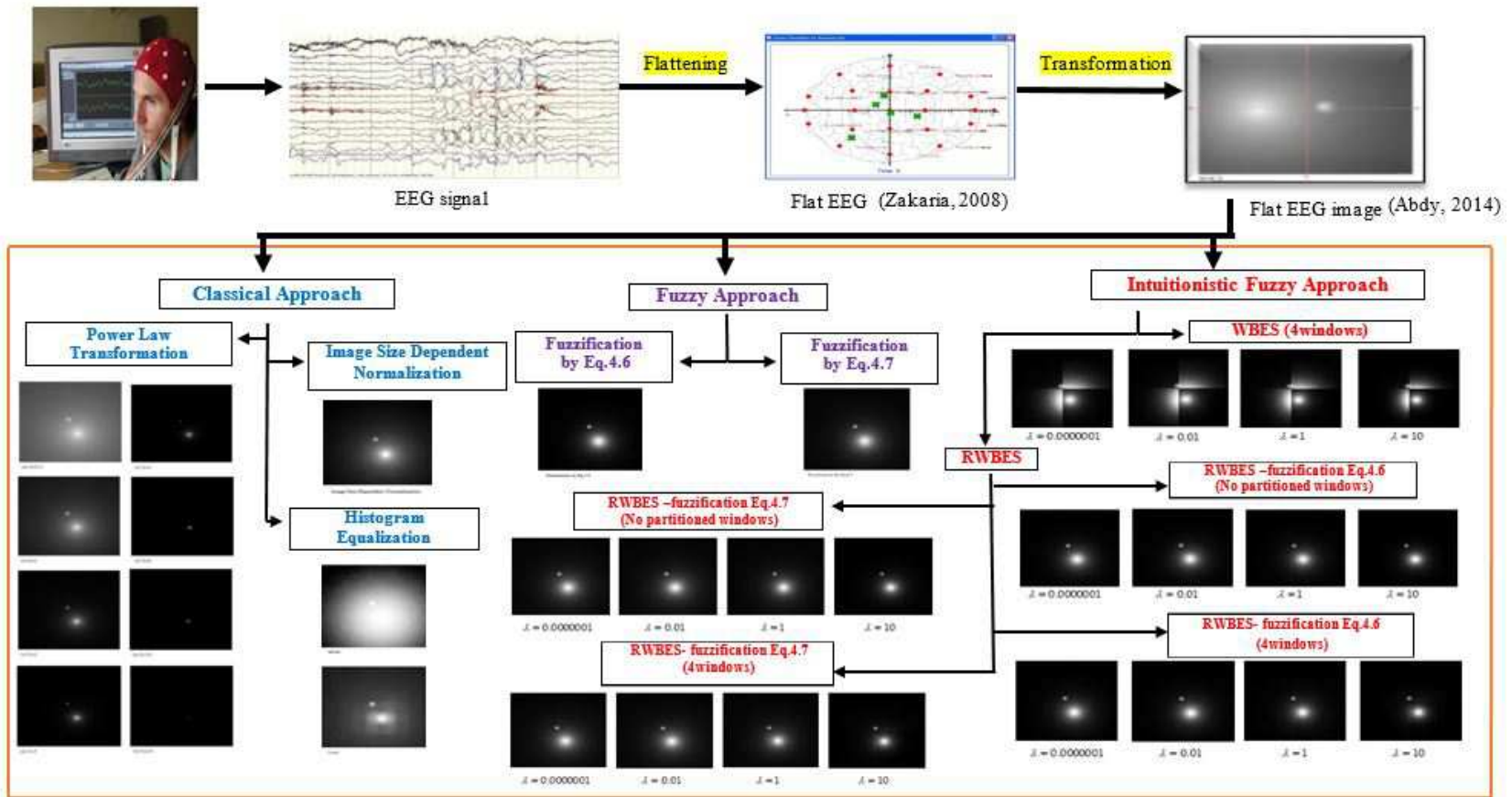


Figure 1.1 Research contribution on fEEG image

1.8 Research Framework

This research consists of eight chapters and the summary of framework is shown in Figure 1.2. The first chapter serves as an introduction to the whole thesis. This chapter provides the general information about the research background, problem statement, research questions, research objectives, scope of the research, and significant contributions. Chapter 2 presents the literature review of this research which contains of information on human brain, seizure, digital image processing, fuzzy image processing, intuitionistic fuzzy image processing, image enhancement, medical imaging, and electroencephalography.

The mathematical background of fEEG image is demonstrated in Chapter 3. Moreover, the mathematical concepts of classical set, fuzzy set, intuitionistic fuzzy set, sequence of fuzzy number, fEEG, digital fEEG, and image quality assessment are discussed in this chapter. The enhancement process of fEEG image is discussed in Chapter 4. It focused on contrast enhancement which covers the classical, fuzzy, and intuitionistic fuzzy approaches. The selected methods and algorithms are presented in details in this chapter. The implementation of the enhancement methods is given in Chapter 5. The fEEG input image that is presented in this chapter is for patient A at time $t = 1$ with size of 201×201 , which is a grayscale image. Different enhancement methods will give different output images.

Chapter 6 demonstrates some image quality indices that are applied to the input and output images which consist of the error based and structural based metrics. Additionally, in Chapter 7, the concept of Sugeno type intuitionistic fuzzy generator in the non-membership function is extended to the concept of fuzzy limit. Some values of ε are tested to obtain the values of integer N . Hence the values of λ and hesitation π are also determined. Finally, Chapter 8 concludes the research outcomes which highlights the significance of the research and provides some suggestions for future works.

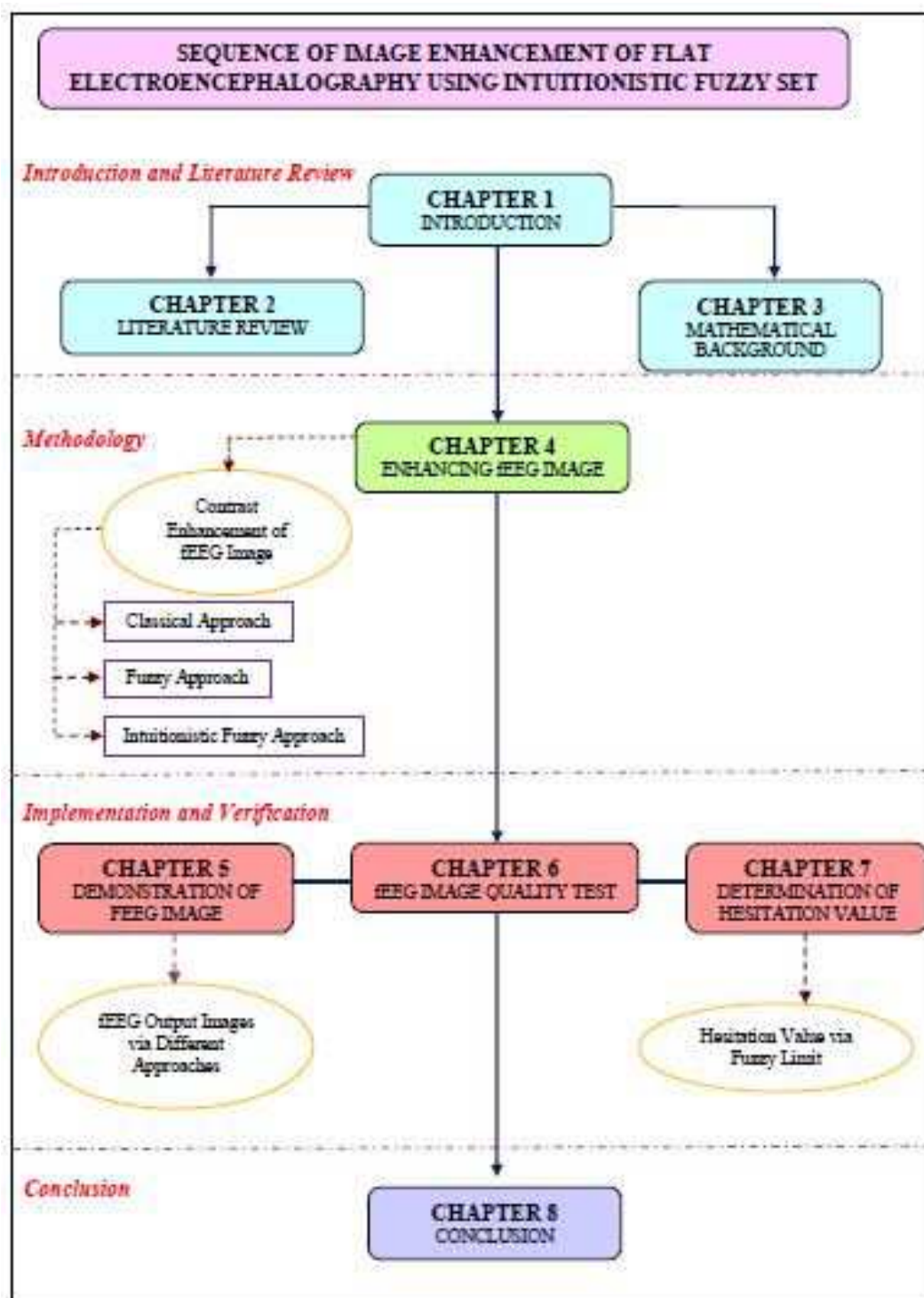


Figure 1.2 Research framework

REFERENCES

1. DiFrancesco, M. W., Holland, S. K. and Szaflarski, J. P. Simultaneous EEG/Functional Magnetic Resonance Imaging at 4 Tesla: Correlates of Brain Activity to Spontaneous Alpha Rhythm During Relaxation. *Journal of Clinical Neurophysiology: Official Publication of the American Electroencephalographic Society*. 2008. 25(5): 255.
2. Rudman, J. *EEG Technician*. National Learning Corporation. 2012.
3. Shorvon, S. D., Andermann, F. and Guerrini, R. (Eds.). *The Causes of Epilepsy (Common and Uncommon Causes in Adults and Children)*. Cambridge University Press. 2011.
4. Zakaria, F. *Dynamic Profiling of EEG Data During Seizure Using Fuzzy Information*. Ph.D. Thesis. Universiti Teknologi Malaysia; 2008.
5. Abdy, M. and Ahmad, T. Transformation of EEG Signals into Image Form During Epileptic Seizure. *International Journal of Basic & Applied Sciences*. 2011. 11(2): 18–23.
6. Abdy, M. *Fuzzy Digital Topological Space and Image of Flat Electroencephalography During Seizure*. Ph.D. Thesis. Universiti Teknologi Malaysia; 2014.
7. Snell, R. S. *Clinical Neuroanatomy Book*. Lippincott Williams & Wilkins. 2006.
8. Waxman, S. G. *Clinical Neuroanatomy Book*. McGraw-Hill Medical New York. 2010.
9. Adel, K. A. and Ronald, A. B. *Functional Neuroanatomy: Text and Atlas*. *Functional Neuroanatomy: Text and Atlas*. 2005.
10. Greenberg, M. S. *Handbook of Neurosurgery*. Thieme. 2006.

11. Sofan, M. Z. Neurosurgeon, Neurosurgery Department, Queen Elizabeth Hospital, Kota Kinabalu, Sabah, 2016.
12. Hämäläinen, M., Hari, R., Ilmoniemi, R. J., Knuutila, J. and Lounasmaa, O. V. Magnetoencephalography: Theory, Instrumentation, and Applications to Noninvasive Studies of the Working Human Brain. *Reviews of Modern Physics*. 1993. 65(2): 413.
13. Brodmann, K. and Garey, L. J. *Brodmann's: Localisation in the Cerebral Cortex*. Springer Science & Business Media. 2007.
14. Weaver, D. F. *Epilepsy and Seizures: Everything You Need To Know*. Firefly Books. 2001.
15. Hunt, K. A. *The Art of Image Processing with Java*. CRC Press. 2010.
16. Joshi, M. A. *Digital Image Processing: An Algorithm Approach*. PHI Learning Pvt. Ltd. 2006.
17. Burdick, H. E. *Digital Imaging: Theory and Applications*. McGraw-Hill, Inc. 1997.
18. Gonzalez, R. C. and Woods, R. E. *Digital Image Processing*. Prentice Hall Upper Saddle River, NJ. 2008.
19. Zhang, Y. *Image Engineering*. Publishing House of Tsinghua University. 2009.
20. Solomon, C. and Breckon, T. *Fundamentals of Digital Image Processing: A Practical Approach with Examples in Matlab*. John Wiley & Sons. 2011.
21. Kumar, M. and Singh, R. Digital Image Processing of Remotely Sensed Satellite Images for Information Extraction. In *Conference on Advances in Communication and Control Systems (CAC2S 2013)*. 2013.
22. Acharya, T. and Ray, A. K. *Image Processing: Principles and Applications*. John Wiley & Sons. 2005.

23. Lakshmi, J. K. and Punithavalli, M. A Survey on Skeletons in Digital Image Processing. In *International Conference on Digital Image Processing*. IEEE. 2009. 260–269.
24. Zhou, H., Wu, J. and Zhang, J. *Digital Image Processing: Part I*. Bookboon. 2010.
25. Awcock, G. J. and Thomas, R. *Applied Image Processing*. McGraw-Hill, Inc. 1995.
26. Frank, Y. S. *Image Processing and Pattern Recognition*. John Wiley & Sons. 2010.
27. Chaira, T. and Ray, A. K. *Fuzzy Image Processing and Applications with MATLAB*. CRC Press, Inc. 2010.
28. Pal, S. K. Fuzzy Sets in Image Processing and Recognition. In *IEEE International Conference on Fuzzy Systems*. IEEE. 1992. 119–126.
29. Hanmandlu, M., Jha, D. and Sharma, R. Color Image Enhancement by Fuzzy Intensification. *Pattern Recognition Letters*. 2003. 24(1): 81–87.
30. Chaira, T. and Ray, A. Segmentation Using Fuzzy Divergence. *Pattern Recognition Letters*. 2003. 24(12): 1837–1844.
31. Vlachos, I. K. and Sergiadis, G. D. Intuitionistic Fuzzy Image Processing. In *Soft Computing in Image Processing*. Springer. 2007. 383–414.
32. Vlachos, I. K. and Sergiadis, G. D. Intuitionistic Fuzzy Information–Applications to Pattern Recognition. *Pattern Recognition Letters*. 2007. 28(2): 197–206.
33. Vlachos, I. K. and Sergiadis, G. D. The Role of Entropy in Intuitionistic Fuzzy Contrast Enhancement. In *Foundations of Fuzzy Logic and Soft Computing*. Springer. 2007. 104–113.
34. Chaira, T. Medical Image Thresholding Scheme Using Atanassov Intuitionistic Fuzzy Set. In *Proceeding of International Conference on Methods and Models in Computer Science, 2009. ICM2CS 2009*. . IEEE. 2009. 1–5.
35. Maini, R. and Aggarwal, H. A Comprehensive Review of Image Enhancement Techniques. *Journal of Computing*. 2010. 2(3).

36. Petrou, M. and Petrou, C. *Image Processing: The Fundamentals*. John Wiley & Sons. 2010.
37. Marques, O. *Practical Image and Video Processing Using MATLAB*. John Wiley & Sons. 2011.
38. Chaira, T. A Rank Ordered Filter for Medical Image Edge Enhancement and Detection Using Intuitionistic Fuzzy Set. *Applied Soft Computing*. 2012. 12(4): 1259–1266.
39. Jahne, B. *Digital Image Processing: Concepts, Algorithms, and Scientific Applications*. Berlin, Heidelberg: Springer-Verlag. 1997.
40. Rakesh, R. R., Chaudhuri, P. and Murthy, C. Thresholding in Edge Detection: A Statistical Approach. *IEEE Transactions on Image Processing*. 2004. 13: 927–936.
41. Van De Ville, D., Nachtegael, M., Van der Weken, D., Kerre, E. E., Philips, W. and Lemahieu, I. Noise Reduction by Fuzzy Image Filtering. *IEEE Transactions on Fuzzy Systems*. 2003. 11(4): 429–436.
42. Mythili, C. and Kavitha, V. Efficient Technique for Color Image Noise Reduction. *The Research Bulletin of Jordan, ACM*. 2011. 1(11): 41–44.
43. McAndrew, A. An Introduction to Digital Image Processing with Matlab. *School of Computer Science and Mathematics, Victoria University of Technology*. 2004: 1–264.
44. Mayo clinic. (2017, March 1). CT Scan Slices. Retrieved from website: <http://www.mayoclinic.org/tests-procedures/ct-scan/multimedia/ct-scan-slices/img-20008348>.
45. Mayo clinic. (2017, March 1). CT Scan Images of the Brain. Retrieved from website: <http://www.mayoclinic.org/tests-procedures/ct-scan/multimedia/ct-scan-images-of-the-brain/img-20008347>.
46. Chaira, T. Intuitionistic Fuzzy Set Theory in Medical Imaging. *International Journal of Soft Computing and Engineering*. 2011. 1: 24–26.

47. Yasmin, M., Sharif, M., Masood, S., Raza, M. and Mohsin, S. Brain Image Enhancement-A Survey. *World Applied Sciences Journal*. 2012. 17(9): 1192–1204.
48. Nunez, P. L. and Pilgreen, K. L. The Spline-Laplacian in Clinical Neurophysiology: A Method to Improve EEG Spatial Resolution. *Journal of Clinical Neurophysiology*. 1991. 8(4): 397–413.
49. Michel, C. M. and Murray, M. M. Towards the Utilization of EEG as a Brain Imaging Tool. *Neuroimage*. 2012. 61: 371–385.
50. Benbadis, S. R., Husain, A. M., Kaplan, P. W., Tatum, W. O., Tatum, W., Benbadis, S., Husain, A. and Kaplan, P. *Handbook of EEG Interpretation*. Demos Medical Publishing. 2007.
51. Klein, S. B. and Thorne, B. M. *Biological Psychology*. Macmillan. 2006.
52. Niedermeyer, E. and Da Silva, F. L. *Electroencephalography: Basic Principles, Clinical Applications, and Related Fields*. Lippincott Williams & Wilkins. 2005.
53. Khalil, B. A. and Misulis, K. *Atlas of EEG & Seizure Semiology*. Elsevier, Butterworth Heinehmann Edition, Philadelphia. 2006.
54. Schenck, J. F. The Role of Magnetic Susceptibility in Magnetic Resonance Imaging: MRI Magnetic Compatibility of the First and Second Kinds. *Medical Physics*. 1996. 23(6): 815–850.
55. Murphy, K. J. and Brunberg, J. A. Adult Claustrophobia, Anxiety and Sedation in MRI. *Magnetic Resonance Imaging*. 1997. 15(1): 51–54.
56. O'Regan, S., Faul, S. and Marnane, W. Automatic Detection of EEG Artefacts Arising from Head Movements. In *Engineering in Medicine and Biology Society (EMBC), 2010 Annual International Conference of the IEEE*. IEEE. 2010. 6353–6356.
57. Yasuno, F., Brown, A. K., Zoghbi, S. S., Krushinski, J. H., Chernet, E., Tauscher, J., Schaus, J. M., Phebus, L. A., Chesterfield, A. K., Felder,

- C. C. The Pet Radioligand [11C] Meppep Binds Reversibly and with High Specific Signal to Cannabinoid CB1 Receptors in Nonhuman Primate Brain. *Neuropsychopharmacology*. 2007. 33(2): 259–269.
58. What is fMRI? (2017, March 1). Retrieved from website: <http://fmri.ucsd.edu/Research/whatisfmri.html>.
59. Magnetoencephalography. (2017, March 1). Retrieved from website: <http://www.supraconductivite.fr/en/index.php>.
60. PET Scan. (2017, March 1). Retrieved from website: <http://www.nhs.uk/Conditions/PET-scan/Pages/Introduction.aspx>.
61. Schlögl, A., Slater, M. and Pfurtscheller, G. Presence Research and EEG. In *Proceedings of the 5th International Workshop on Presence*. 2002. 9–11.
62. Laufs, H., Kleinschmidt, A., Beyerle, A., Eger, E., Salek-Haddadi, A., Preibisch, C. and Krakow, K. EEG-Correlated fMRI of Human Alpha Activity. *Neuroimage*. 2003. 19(4): 1463–1476.
63. What is Video EEG Monitoring? (2017, March 1). Retrieved from website: <http://www.seizuretheday.org/2014/04/what-is-video-eeg-monitoring.html>.
64. Chaira, T. Medical Image Enhancement Using Intuitionistic Fuzzy Set. In *1st International Conference on Recent Advances in Information Technology (RAIT-2012), March 15–17*. IEEE. 2012. 54–57.
65. Chaira, T. A Novel Intuitionistic Fuzzy c-Means Clustering Algorithm and Its Application to Medical Images. *Applied Soft Computing*. 2011. 11(2): 1711–1717.
66. Chaira, T. Intuitionistic Fuzzy Segmentation of Medical Images. *IEEE Transactions on Biomedical Engineering*. 2010. 57(6): 1430–1436.
67. Chaira, T. A Novel Rank Ordered Filter Based Edge Enhancement of Medical Images Using Intuitionistic Fuzzy Set Theory. In *International Conference on Methods and Models in Computer Science (ICM2CS)*. IEEE. 2010. 18–21.

68. Chaira, T. and Chaira, T. Intuitionistic Fuzzy Set: Application to Medical Image Segmentation. In *Computational Intelligence in Medical Informatics*. Springer. 2008. 51–68.
69. Chaira, T. and Anand, S. A Novel Intuitionistic Fuzzy Approach for Tumor/Hemorrhage Detection in Medical Images. *Journal of Scientific and Industrial Research*. 2011. 70(6): 427–434.
70. Chaira, T. and Ray, A. A New Measure Using Intuitionistic Fuzzy Set Theory and Its Application to Edge Detection. *Applied Soft Computing*. 2008. 8(2): 919–927.
71. Ross, T. J. *Fuzzy Logic with Engineering Applications*. John Wiley & Sons. 2009.
72. Halpern, J. Y. *Reasoning About Uncertainty*. MIT Press Cambridge. 2005.
73. Mukaidono, M. *Fuzzy Logic for Beginners*. vol. 34. World Scientific. 2001.
74. Negnevitsky, M. *Artificial Intelligence: A Guide to Intelligent Systems*. Pearson Education. 2005.
75. Zadeh, L. A. Fuzzy Sets. *Information and Control*. 1965. 8(3): 338–353.
76. Atanassov, K. T. Intuitionistic Fuzzy Sets. *J. Fuzzy Sets and Systems*. 1986. 20: 87–96.
77. Wang, L. X. *A Course in Fuzzy Systems*. Prentice-Hall Press, USA. 1999.
78. Grzegorzewski, P. and Mrówka, E. Some Notes on (Atanassov's) Intuitionistic Fuzzy Sets. *Fuzzy Sets and Systems*. 2005. 156(3): 492–495.
79. Atanassov, K. Answer to D. Dubois, S. Gottwald, P. Hajek, J. Kacprzyk and H. Prade's Paper Terminological Difficulties in Fuzzy Set Theory: The Case of Intuitionistic Fuzzy Sets. *Fuzzy Sets and Systems*. 2005. 156(3): 496–499.
80. Atanassov, K. T. Intuitionistic Fuzzy Sets: Past, Present and Future. In *EUSFLAT Conference*. 2003. 12–19.
81. Deschrijver, G. and Kerre, E. E. On the Relationship between Some Extensions of Fuzzy Set Theory. *Fuzzy Sets and Systems*. 2003. 133(2): 227–235.

82. Deschrijver, G. and Kerre, E. E. On the Position of Intuitionistic Fuzzy Set Theory in the Framework of Theories Modelling Imprecision. *Information Sciences*. 2007. 177(8): 1860–1866.
83. Gerstenkorn, T. and Mańko, J. Bifuzzy Probabilistic Sets. *Fuzzy Sets and Systems*. 1995. 71(2): 207–214.
84. Bustince, H. and Burillo, P. Vague Sets are Intuitionistic Fuzzy Sets. *Fuzzy Sets and Systems*. 1996. 79(3): 403–405.
85. Nikolova, M., Nikolov, N., Cornelis, C. and Deschrijver, G. Survey of the Research on Intuitionistic Fuzzy Sets. In *Proceedings of the 6th Joint Conference on Information Sciences*. Association for Intelligent Machinery. 2002. 117–120.
86. Savas, E. A Note on Sequence of Fuzzy Numbers. *Information Sciences*. 2000. 124: 297–300.
87. Nanda, S. On Sequences of Fuzzy Numbers. *Fuzzy Sets and Systems*. 1989. 33: 123–126.
88. Ahmad, T., Abdullah, J., Fauziah, F., Mustapha, F. and Zabidi, H. Tracking the Storm in the Brain. *J. Quantitative Methods*. 2006. 2: 1–9.
89. Ahmad, N. *Theoretical Foundation for Digital Space of Flat Electroencephalogram*. Ph.D. Thesis. Universiti Teknologi Malaysia; 2009.
90. Wang, Z., Bovik, A. C. and Lu, L. Why is Image Quality Assessment So Difficult? In *IEEE International Conference on Acoustics, Speech, and Signal Processing (ICASSP)*. IEEE. 2002. 4: 3313–3316.
91. Wang, Z., Bovik, A. C., Sheikh, H. R. and Simoncelli, E. P. Image Quality Assessment: From Error Visibility to Structural Similarity. *IEEE Transactions on Image Processing*. 2004. 13(4): 600–612.
92. Dosselmann, R. and Yang, X. D. Existing and Emerging Image Quality Metrics. In *Canadian Conference on Electrical and Computer Engineering*. IEEE. 2005. 1906–1913.

93. Hore, A. and Ziou, D. Image Quality Metrics: PSNR vs. SSIM. In *20th International Conference on Pattern Recognition (ICPR)*. IEEE. 2010. 2366–2369.
94. Wang, Z. and Bovik, A. C. A Universal Image Quality Index. *Signal Processing Letters, IEEE*. 2002. 9(3): 81–84.
95. Zohair, A., Sulong, G., Johar, M. G. M. Enhancing the Contrast of CT Medical Images by Employing a Novel Image Size Dependent Normalization Technique. *International Journal of Bio-Science and Bio-Technology*. 2012. 4(3): 63–68.