

IMPROVED PARTICLE SWARM OPTIMIZATION AND GRAVITATIONAL  
SEARCH ALGORITHM FOR PARAMETER ESTIMATION IN ASPARTATE  
PATHWAYS

AHMAD MUHAIMIN BIN ISMAIL

UNIVERSITI TEKNOLOGI MALAYSIA

IMPROVED PARTICLE SWARM OPTIMIZATION AND GRAVITATIONAL  
SEARCH ALGORITHM FOR PARAMETER ESTIMATION IN ASPARTATE  
PATHWAYS

AHMAD MUHAIMIN BIN ISMAIL

A thesis submitted in fulfilment of the  
requirements for the award of the degree of  
Master of Philosophy

Faculty of Computing  
Universiti Teknologi Malaysia

JUNE 2017

*To my beloved father, mother, and family.*

## **ACKNOWLEDGEMENT**

First of all, I would like to thank to my supervisors Assoc Prof Dr Mohd Saberi Bin Mohamad, Dr Khairul Hamimah Binti Abas, Mr Hairudin Bin Abdul Majid, and Prof Dr Safaai Bin Deris for given me guidance and advice in completing this research. In addition, I would also like to thanks to everyone in AIBIG for their helpful comments and suggestion during the weekly seminar. Lastly, I also want to thank to my parents and friends that given me encouragements, guidance and motivation comment. All of them are always support me in overcome the problems in completing this research.

## ABSTRACT

One of the main issues in biological system is to characterize the dynamic behaviour of the complex biological processes. Usually, metabolic pathway models are used to describe the complex processes that involve many parameters. It is important to have an accurate and complete set of parameters that describe the characteristics of a given model. Therefore, the parameter values are estimated by fitting the model with experimental data. However, the estimation on these parameters is typically difficult and even impossible in some cases. Furthermore, the experimental data are often incomplete and also suffer from experimental noise. These shortcomings make it challenging to identify the best-fit parameters that can represent the actual biological processes involved in biological systems. Previously, a computational approach namely optimization algorithms are used to estimate the measurement of the model parameters. Most of these algorithms previously often suffered bad estimation for the biological system models, which resulted in bad fitting (error) the model with the experimental data. This research proposes a parameter estimation algorithm that can reduce the fitting error between the models and the experimental data. The proposed algorithm is an Improved Particle Swarm Optimization and Gravitational Search Algorithm (IPSOGSA) to obtain the near-optimal kinetic parameter values from experimental data. The improvement in this algorithm is a local search, which aims to increase the chances to obtain the global solution. The outcome of this research is that IPSOGSA can outperform other comparison algorithms in terms of root mean squared error (RMSE) and predictive residual error sum of squares (PRESS) for the estimated results. IPSOGSA manages to score the smallest RMSE with 12.2125 and 0.0304 for Ile and HSP metabolite respectively. The predicted results are benefits for the estimation of optimal kinetic parameters to improve the production of desired metabolites.

## ABSTRAK

Salah satu isu utama dalam sistem biologi adalah untuk menggambarkan ciri dinamik proses biologi yang kompleks. Biasanya, model laluan metabolik digunakan untuk menggambarkan proses kompleks yang melibatkan banyak parameter. Ia penting untuk mempunyai satu set parameter yang tepat dan lengkap yang dapat menerangkan ciri-ciri model yang diberikan. Oleh itu, nilai-nilai parameter dianggar dengan menyesuaikan model dengan data eksperimen. Namun, anggaran pada parameter ini biasanya sukar, malahan mustahil dalam kes-kes tertentu. Tambahan pula, data eksperimen sering tidak lengkap dan juga mengalami gangguan eksperimen. Kelemahan ini menjadi cabaran untuk mendapatkan parameter terbaik yang boleh mewakili proses biologi sebenar. Sebelum ini, algoritma pengoptimuman digunakan untuk menganggarkan pengukuran parameter model. Kebanyakan algoritma sebelum ini sering mengalami anggaran yang tidak tepat bagi model sistem biologi, menyebabkan penyesuaian tidak tepat (ralat) pada model dengan data eksperimen. Penyelidikan ini mencadangkan satu algoritma anggaran parameter yang boleh mengurangkan ralat penyesuaian antara model dan data eksperimen. Algoritma yang dicadangkan adalah gabungan Kawanan Partikel Pengoptimuman yang lebih baik dan Algoritma Carian Graviti (IPSOGSA) dalam mendapatkan nilai parameter kinetik hampir optimum daripada data eksperimen. Pengubahsuaian dalam gabungan algoritma ini adalah pada carian setempat untuk meningkatkan peluang untuk mendapatkan penyelesaian global. Hasil kajian ini menunjukkan IPSOGSA dapat mengatasi algoritma perbandingan yang lain dari segi ralat punca min kuasa dua (RMSE) dan hasil kuasa dua ramalan ralat (PRESS) untuk keputusan anggaran. IPSOGSA berjaya mendapatkan nilai RMSE yang paling kecil masing-masing 12.2125 dan 0.0304 untuk metabolit Ile dan HSP. Keputusan anggaran ini bermanfaat bagi anggaran parameter kinetik optimum untuk meningkatkan pengeluaran metabolit dikehendaki.

## TABLE OF CONTENTS

CHAPTER	TITLE	PAGE
	<b>DECLARATION</b>	<b>ii</b>
	<b>DEDICATION</b>	<b>iii</b>
	<b>ACKNOWLEDGEMENT</b>	<b>iv</b>
	<b>ABSTRACT</b>	<b>v</b>
	<b>ABSTRAK</b>	<b>vi</b>
	<b>TABLE OF CONTENT</b>	<b>vii</b>
	<b>LIST OF TABLES</b>	<b>xi</b>
	<b>LIST OF FIGURES</b>	<b>xii</b>
	<b>LIST OF SYMBOLS</b>	<b>xiv</b>
	<b>LIST OF ABBREVIATIONS</b>	<b>xvi</b>
	<b>LIST OF APPENDICES</b>	<b>xvii</b>
<b>1</b>	<b>INTRODUCTION</b>	<b>1</b>
	1.1 Overview	1
	1.2 Introduction	2
	1.3 Problem Background	4
	1.4 Problem Statements	5
	1.5 Aim of the Research	6
	1.6 Objectives of the Research	6
	1.7 Scopes of the Research	7
	1.8 Significant of the Study	7
	1.9 Report Structure	8

<b>2</b>	<b>LITERATURE REVIEW</b>	<b>10</b>
2.1	Overview	10
2.2	Metabolic Engineering of Microorganisms	11
2.3	Processes of Biological Systems	12
2.4	Mathematical Modelling of Biological Systems	13
2.2.1	Stoichiometric Modeling	15
2.2.2	Kinetic Modeling	16
2.5	Parameter Estimation in Mathematical Modelling of Biological Systems	19
2.5.1	Noise in Experimental data	22
2.5.2	Model Fitting in Biological Systems	23
2.5.3	Parameter Estimation Strategies in Biological Systems	24
2.5.3.1	Particle Swarm Optimization	26
2.5.3.2	Gravitational Search Algorithm	28
2.5.3.3	Hybrid of Particle Swarm Optimization and Gravitational Search Algorithm	30
2.5.4	Comparison on Parameter Estimation Algorithms	31
2.5.5	Hybrid and Improved version of Parameter Estimation Algorithms	35
2.6	Trend of Parameter Estimation in Biological System	37
2.6	Summary	39
<b>3</b>	<b>RESEARCH METHODOLOGY</b>	<b>40</b>
3.1	Overview	40
3.2	Research Framework	41
3.2.1	Phase 1	42
3.2.1.1	Understand and investigate the target domains	42
3.2.1.2	Examine the kinetic	43



	pathway simulation models	
3.2.1.3	Modeling parameter estimation as optimization problem and tuning control parameter for the experiment setups	46
3.2.1.4	Develop the proposed design of IPSOGSA and other comparison algorithms for parameter estimation	48
3.2.2	Phase 2	50
3.2.2.1	Implement the proposed algorithm and other comparison algorithms as the parameter estimation algorithms for the target pathway models	50
3.2.2.2	Evaluate the performance of proposed algorithm and comparison algorithms	53
3.2.2.3	Compare the performances and results of all algorithms in estimating near optimal kinetic parameter values	54
3.3	Software and Hardware Requirement	55
3.4	Summary	56
<b>4</b>	<b>IMPLEMENTATION OF IMPROVED PARTICLE SWARM OPTIMIZATION AND GRAVITATIONAL SEARCH ALGORITHM FOR PARAMETER ESTIMATION</b>	<b>57</b>
4.1	Overview	57
4.2	Improved Particle Swarm Optimization and Gravitational Search Algorithm	58
4.4.1	Initialization	60

	4.4.2	Evaluation	61
	4.4.3	Probability	62
	4.4.4	Acceleration	65
	4.4.5	Update Position	65
4.3		Result and Discussion	66
	4.3.1	Parameter Estimation of Ile metabolite in <i>A. thaliana</i> pathway model	66
	4.3.1.1	Comparison of the estimation results for Ile	68
	4.3.2	Parameter Estimation of HSP metabolite in <i>E. coli</i> pathway model	73
	4.3.2.1	Comparison of the estimation results for HSP	75
	4.3.3	Discussion	82
4.4		Summary	83
<b>5</b>		<b>CONCLUSION</b>	<b>84</b>
	5.1	Overview	84
	5.2	Research Conclusion	85
	5.3	Research Contribution	86
	5.4	Research Limitation	86
	5.5	Future Works	87
		<b>REFERENCES</b>	<b>88</b>
		<b>APPENDIX A</b>	<b>97</b>
		<b>APPENDIX B</b>	<b>100</b>
		<b>APPENDIX C</b>	<b>106</b>

**LIST OF TABLES**

<b>TABLE NO.</b>	<b>TITLE</b>	<b>PAGE</b>
2.1	Summary of parameter estimation in biological modeling	21
2.2	Comparison on some of the stochastic optimization algorithms based on issues in the parameter estimation	32
2.3	List of some hybrid/improved version of estimation algorithms	35
3.1	Detail of pathway models	43
3.2	List of control parameters	47
4.1	Standard deviation and Z-score of kinetic parameter values estimated for Ile	67
4.2	Model fitting based on the best set of kinetic parameter values estimated for Ile	68
4.3	T-test for model estimated with experimental result of Ile	73
4.4	Standard deviation and Z-score of the individual kinetic parameter values estimated for HSP	74
4.5	Model fitting based on the best set of kinetic parameter values estimated for HSP	76
4.6	T-test for model estimated with experimental result of HSP	81

## LIST OF FIGURES

FIGURE NO.	TITLE	PAGE
1.1	Metabolic pathway model processing	3
1.2	Model fitting from noisy experimental data	6
2.1	Aspartate metabolism pathway	13
2.2	Cycle of mathematical modeling	14
2.3	Summary of stoichiometric modeling	16
2.4	Summary of kinetic modeling	18
2.5	Overview on parameter estimation algorithms	24
2.6	The flowchart of basic PSO algorithm	27
2.7	The flowchart of GSA	29
2.8	The flowchart of PSOGSA	30
3.1	Research framework	41
3.2	Involvement of Ile in threonine deaminase reaction	45
3.3	Involvement of HSP in threonine synthase and homoserine kinase reaction	46
3.4	Flowchart of IPSOGSA and PSOGSA	49
4.1	The pseudo-code of IPSOGSA	59
4.2	Initialization of random population	60
4.3	Evaluation process calculation	61
4.4	The activities involve in probability phase	63
4.5	Example of local search in probability phase	64
4.6	Illustration on the searching space in probability phase	64
4.7	Comparison on the model fitting with experimental data for each comparison algorithms	70

4.8	Convergence graph for Isoleucine	71
4.9	Model estimated for Isoleucine	72
4.10	Comparison on the model fitting with experimental data for each comparison algorithms	78
4.11	Convergence graph for HSP	79
4.12	Model estimated for HSP	81

## LIST OF SYMBOLS

$\emptyset_{ij}$	-	The random number between -1 and 1
$\alpha$	-	Descending coefficient in gravitational formula
$ac$	-	The acceleration of an individual in population
$A$	-	Average error rate
$c1$	-	The weighting factors
$c2$	-	The weighting factors
$D$	-	The dimension of problems
$\frac{ds}{dt}$	-	Ordinary Differential Equation
$g_{best}$	-	Memory to store best solution
$e$	-	The generated measurement noise
$F$	-	The force of the individuals
$fit$	-	The fitness of individuals
$G0$	-	Descending coefficient in gravitational formula
$M$	-	Mass of the individual
$min()$	-	The minimum value
$N()$	-	The random numbers
$n$	-	Number of rows in time series data
$newF$	-	The fitness of new generated neighbor individuals
$np$	-	The number of population
$p_i$	-	The probability of an individual in the population
$Rand$	-	Random number between 0 and 1
$RMSE$	-	Root mean squared error
$STD$	-	Sample standard deviation
$s(x)$	-	The biochemical compounds with set of parameter $x$
$t$	-	The sampling time

- $v_{ij}$  - The velocity of an individual in the population
- $x_{ij}$  - The position of an individual in the population
- $y^{exp}$  - Experimental time series data
- $y$  - Simulated time series data

## LIST OF ABBRABATIONS

ABC	-	Artificial Bee Colony Algorithm
<i>A. thaliana</i>	-	<i>Arabidopsis thaliana</i>
BA	-	Bee algorithm
<i>E. coli</i>	-	<i>Escherichia coli</i>
GSA	-	Gravitational Search Algorithm
HSP	-	Homoserine phosphate
IDE		Improved Differential Evolution
Ile	-	Isoleucine
IPSOGSA	-	Improved Particle Swarm Optimization and Gravitational Search Algorithm
ODE	-	Ordinary differential equations
PSO	-	Particle Swarm Optimization
PSOGSA	-	Particle Swarm Optimization and Gravitational Search Algorithm
RMSE	-	Root mean squared error
SA	-	Simulated Annealing
SBML	-	System Biology Markup Language
SD	-	Simplex Downhill
STD	-	Standard deviation



**LIST OF APPENDICES**

<b>APPENDICES</b>	<b>TITLE</b>	<b>PAGE</b>
A	Model Preparation	97
B	Datasets	100
C	Results	106

## CHAPTER 1

### INTRODUCTION

#### 1.1 Overview

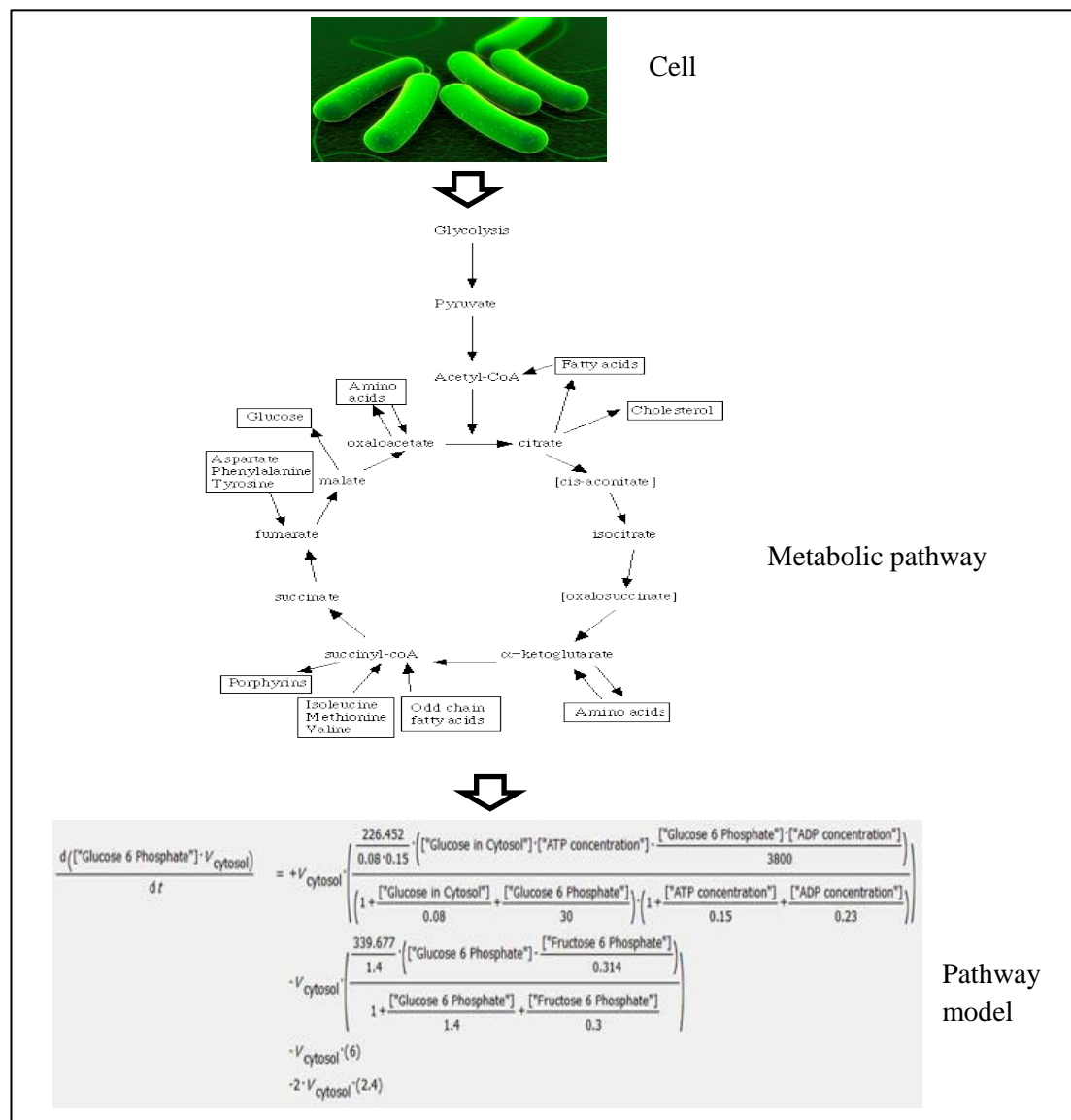
This chapter was about the introduction of modeling and parameter estimation by using *in silico* optimization algorithms in biological systems. Then, the problem background and problem statement of the research are discussed and explained. Next, the objectives are determined to achieve the goal of the research. The scope also is clearly stated about the limitations, data collection, and requirements in this chapter. Finally, the last section of this chapter explains the report structure.

## 1.2 Introduction

Pharmaceutical and dairy food products are produced by a fermentation process which used fed-batch culture. This fed-batch culture converts substrate into desired products (metabolites), and this procedure being carried out using apparatus namely bioreactor. Aspartate metabolism can synthesize the essential amino acids which are essential to be consumed by the human. The essential amino acids which produced are Lysine, Threonine, Methionine and Isoleucine. These amino acids are the amino acid which human body unable to synthesize and required to consume from other sources. Unfortunately, the direct production of essential amino acids in the human body is unavailable to be studied and understood. The alternative ways are by understanding the living things model. The small organisms are used as a model because of the nature of these organisms able to produce both of the essential amino acid and unessential amino acid. The productions of these products are part of metabolic engineering which is the part of discipline in the biotechnology field. Microorganism such as *E. coli* and *Saccharomyces cerevisiae* are widely used as cell factory as they have a very good growth rate in production of dairy food product industries. Besides, small flowering plants especially *A. thaliana* are widely used in the production of pharmaceutical and pastries products, especially related to the amino acid derived aspartate.

Biological systems are typically complicated and not fully understandable. Most of the biologist having difficulty in facing with the enormous number of cellular components that required to be characterized based on their role in biological processes, and also their dynamic behaviors. Therefore, there are significant improvements in the research study of system biology field throughout these recent years. In system biology field, the used of the ordinary differential equation in dynamic system modeling is a popular approach (Raue *et al.*, 2015). Besides, the mathematical modeling is widely used in various biological systems. Especially, it has become the fundamental in giving a better understanding of dynamic behaviors and regulation in both biological metabolism and pathways. The pathways are used to understand the complex processes that involve the relations between many parameters. Figure 1.1

gives the illustration on the pathway models. Moreover, the mathematical modeling also gives a prediction and also understanding on both biological simulation and experimental process. In mathematical modeling, there are nine operations which comprise of collect information on network structure, selection on data, simplification and assumption, framework selection, parameter estimation, model diagnostic, model validation, refine model and model application (Chou and Voit, 2009).



**Figure 1.1.** Metabolic pathway model processing

Accurate and complete set of parameters which describes the characteristic of the systems are critical and important as the system model need to be accurate. Nonetheless, the measurement of these parameters is costly and time consuming through *in vitro* experimental process. Hence, there is a requirement for fast and accurate estimation algorithms which can be used to estimate the near optimal kinetic parameter values. Parameter estimation in system biology is an optimization process. The aim is to obtain the optimum parameter values that give the best model fitting with corresponding experimental analyses. In nonlinear biological systems, meta-heuristic optimization methods are used as their capable of finding the local and global optimal efficiently.

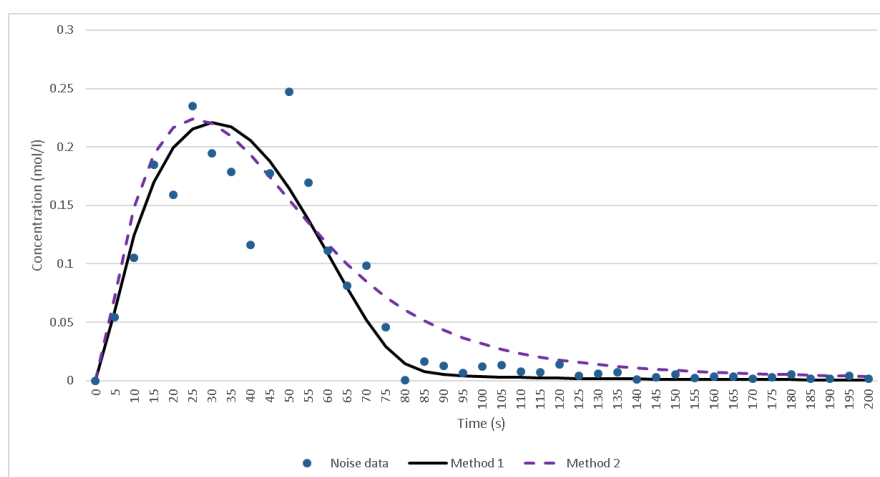
### 1.3 Problem Background

Explaining the complex network biological processes that are characterized by dynamic behavior is one of the main issues in systems biology (Lillacci and Khammash, 2010; Raue *et al.*, 2015). Mathematical models are commonly used to describe dynamic biological processes. These models consist of a set of parameters that describe the physical properties of a dynamic system like the rate of reactions. Measuring these parameters is usually difficult and even impossible in some cases (Fernández *et al.*, 2010). The parameters are often predicted based on fitting the model output with experimental time-series data. The goal of this fitting process is to minimize the errors between these two sets of data by adjusting the parameter values of the model (Rodriguez *et al.*, 2006). However, these experimental data are often incomplete and suffer from experimental noise (Villaverde *et al.*, 2015). This drawback makes it challenging to find the best-fit parameters that adequately represent the actual biological processes involved.

It is crucial that the best parameter values for the biochemical models be estimated and obtained by refining the model parameter values (Schilling *et al.*, 2016). These parameter values are usually identified and measured through costly and time-consuming wet-lab experiments (Tashkova *et al.*, 2011). Alternatively, these parameters can also be estimated using computational approaches. Thus, the parameters estimation turned into multimodal optimization problems, and global optimization algorithms are required to avoid local solutions (Banga, 2008; Sun, Garibaldi, and Hodgman, 2012). Currently, there are a lot of global optimization algorithms that available for estimating the model parameters in various biological systems. Nevertheless, most of the global optimization algorithms mainly Genetic Algorithm, Particle Swarm Optimization, Gravitational Search Algorithm and others often converge to the local solutions instead of the global optimum (Civicioglu and Besdok, 2013; Kang and Zhang, 2016; Sheikhalishahi *et al.*, 2013). These local solutions can lead to poorly fitting data that the model itself can potentially match accurately with a set of experimental data.

#### **1.4 Problem Statement**

The main problem of this research is the parameter estimation algorithms previously often faced bad estimation for the biological system models, which led to bad fitting (error) the model with experimental data. Figure 1.2 shows the example of model fitting with the experimental data.



**Figure 1.2:** Model fitting from noisy experimental data (Note: The line graph shows good model fitting, and the dashed line shows poor model fitting)

## 1.5 Aim

The aim of this research is to propose a parameter estimation algorithm that can reduce the fitting error between the models estimated and experimental data.

## 1.6 Objectives

The specified objectives to achieve the aim of the research are as shown below

- i. To design and develop Improved Particle Swarm Optimization and Gravitational Search Algorithm (IPSOGSA) in obtaining the near-optimal kinetic parameter values by minimize the fitting error of the model and experimental data.
- ii. To evaluate and compare the proposed algorithm by using performance of root mean squared error and predictive residual error sum of squares.

## 1.7 Scopes of the Study

The scopes of this research are described as followed:

- i. Case studies: Aspartate pathways of BIOMD0000000066 and BIOMD0000000212 in SBML format
- ii. Data Source: BioModel database
- iii. Target metabolite: Parameter estimation on the kinetic parameter values of Isoleucine and Homoserine phosphate synthesize in Aspartate pathways for *A.thaliana* and *E.coli*.
- iv. Parameters estimation: Minimize the fitting error between pathway model and the experimental data.

## 1.8 Significant of the Study

This study intends to propose a parameter estimation algorithm for estimating the kinetic parameter values of metabolites in the biochemical pathways. Usually, the parameter estimation in the biochemical pathway is a stochastic problem, and the optimal solution cannot be guaranteed. Thus, the estimation only can achieve the near optimal condition for the estimated solutions. It is significant to determine the near-optimal parameter values in biochemical pathway model as the model itself need to be the near optimal and actual condition. Hence, the production of desired metabolites (product) can be increased and fully utilized in food and health product industries. Furthermore, there are still lacking in the modeling and simulating on the biological pathway models, especially in predicting and optimizing processes. Thus, this study intends to fill this gap, which benefits the industrial and manufacture of dairy food and health products.



## 1.9 Report Structure

In the first chapter, the introduction is explained briefly about the computational modeling of parameter estimation. Besides, there are also the explanation on the background of the problems, problem statement, aim, objectives and scopes covered in this research.

Chapter two gives a review on the area such as mathematical modeling on microorganisms, parameter estimation, and some optimization algorithms that available for computational parameter estimation of the biochemical pathways. Besides, the published previous works on the parameter estimation in the biological model also have been reviewed in this chapter. Besides, there are also the comparisons on different estimation algorithms which discussed in the comparison tables.

Chapter three gives an overall description of the research methodology, which included the phases and activities for each phase. Furthermore, the research framework also listed in this chapter. The description and explanation of the datasets which used in this research also mentioned. Besides, there are also performance evaluations which have being used to validate and comparison all parameter estimation algorithms. Then the last part of this chapter is about software and hardware requirements for this research.

Chapter four focuses on the implementation of proposed algorithm for parameter estimation in Aspartate metabolism pathways. The first section of this chapter is about the implementation of the proposed algorithms. Then, the following section is about the result and discussion for research outcomes. The section includes the estimated kinetic parameter values along with model output data, performance evaluation, and comparison of estimated results among the estimation algorithms. Finally, the last section explained the summary of the chapter.

Chapter five gives the conclusion of this research based on the finding throughout this research. Then, the sections of the chapter continued with the discussion on the future work, limitation, contribution and summary section of this chapter.

## REFERENCE

- Abdullah, A., Deris, S., Anwar, S., & Arjunan, S. N. V. (2013). An Evolutionary Firefly Algorithm for the Estimation of Nonlinear Biological Model Parameters. *PLoS ONE*, 8(3), 1–16. <http://doi.org/10.1371/journal.pone.0056310>
- Abdullah, A., Deris, S., Mohamad, M. S., & Anwar, S. (2013). An Improved Swarm Optimization for Parameter Estimation and Biological Model Selection. *PLoS ONE*, 8(4). <http://doi.org/10.1371/journal.pone.0061258>
- Abramson, M. A., Audet, C., & Dennis, J. E. (2004). Generalized pattern searches with derivative information. *Mathematical Programming*, 100(1), 3–25. <http://doi.org/10.1007/s10107-003-0484-5>
- Allen, D. M. (1974). The Relationship between Variable Selection and Data Augmentation and a Method for Prediction. *Technometrics*, 16(1), 125. <http://doi.org/10.2307/1267500>
- Almquist, J., Cvijovic, M., Hatzimanikatis, V., Nielsen, J., & Jirstrand, M. (2014). Kinetic models in industrial biotechnology - Improving cell factory performance. *Metabolic Engineering*, 24, 38–60. <http://doi.org/10.1016/j.ymben.2014.03.007>
- Bailey, J. E. (1998). Mathematical modeling and analysis in biochemical engineering: past accomplishments and future opportunities. *Biotechnology Progress*, 14(1), 8–20. <http://doi.org/10.1021/bp9701269>
- Baker, S. M., Schallau, K., & Junker, B. H. (2010). Comparison of different algorithms for simultaneous estimation of multiple parameters in kinetic metabolic models. *Journal of Integrative Bioinformatics*, 7(3), 1–9. <http://doi.org/10.2390/biecoll-jib-2010-133>
- Banga, J. R. (2008). Optimization in computational systems biology. *BMC Systems Biology*, 2(FEBRUARY 2008), 47. <http://doi.org/10.1186/1752-0509-2-47>
- Banga, J. R., & Balsa-Canto, E. (2008). Parameter estimation and optimal experimental design. *Essays in Biochemistry*, 45(FEBRUARY), 195–209.

<http://doi.org/10.1042/BSE0450195>

- Chassagnole, C., Fell, D. a, Raïs, B., Kudla, B., & Mazat, J. P. (2001). Control of the threonine-synthesis pathway in *Escherichia coli*: a theoretical and experimental approach. *The Biochemical Journal*, 356(Pt 2), 433–444. <http://doi.org/10.1042/0264-6021:3560433>
- Chassagnole, C., Raïs, B., Quentin, E., Fell, D. a, & Mazat, J. P. (2001). An integrated study of threonine-pathway enzyme kinetics in *Escherichia coli*. *The Biochemical Journal*, 356(Pt 2), 415–423. <http://doi.org/10.1042/0264-6021:3560415>
- Chong, C. K., Mohamad, M. S., Deris, S., Shamsir, M. S., & Abdullah, A. (2014). An improved differential evolution algorithm for enhancing biochemical pathways simulation and production. *International Journal of Data Mining and Bioinformatics*, 10(4), 424. <http://doi.org/10.1504/IJDMB.2014.064893>
- Chong, C. K., Mohamad, M. S., Deris, S., Shamsir, M. S., Chai, L. E., & Choon, Y. W. (2014). Using an Improved Bee Memory Differential Evolution Algorithm for Parameter Estimation To Simulate Biochemical Pathways. *Journal of Biological Systems*, 03(22(01)), 101–121. <http://doi.org/10.1142/S0218339014500065>
- Chou, I. C., & Voit, E. O. (2009). Recent developments in parameter estimation and structure identification of biochemical and genomic systems. *Mathematical Biosciences*, 219(2), 57–83. <http://doi.org/10.1016/j.mbs.2009.03.002>
- Civicioglu, P., & Besdok, E. (2013). A conceptual comparison of the Cuckoo-search, particle swarm optimization, differential evolution and artificial bee colony algorithms. *Artificial Intelligence Review* (Vol. 39). <http://doi.org/10.1007/s10462-011-9276-0>
- Curien, G., & Bastien, O. (2009a). Understanding the regulation of aspartate metabolism using a model based on measured kinetic parameters. *Molecular Systems ...*, 5(271), 271. <http://doi.org/10.1038/msb.2009.29>
- Curien, G., & Bastien, O. (2009b). Understanding the regulation of aspartate metabolism using a model based on measured kinetic parameters. *Molecular Systems Biology*, 5(271), 271. <http://doi.org/10.1038/msb.2009.29>
- Fan, M., Kuwahara, H., Wang, X., Wang, S., & Gao, X. (2015). Parameter estimation methods for gene circuit modeling from time-series mRNA data: a comparative study. *Briefings in Bioinformatics*, 16(February), 1–13. <http://doi.org/10.1093/bib/bbv015>

- Fernández Slezak, D., Suárez, C., Cecchi, G. A., Marshall, G., & Stolovitzky, G. (2010). When the optimal is not the best: Parameter estimation in complex biological models. *PLoS ONE*, 5(10). <http://doi.org/10.1371/journal.pone.0013283>
- Fong, S. S. (2014). Computational approaches to metabolic engineering utilizing systems biology and synthetic biology. *Computational and Structural Biotechnology Journal*, 11(18), 28–34. <http://doi.org/10.1016/j.csbj.2014.08.005>  
Mini Review
- Gábor, A., & Banga, J. R. (2015). Robust and efficient parameter estimation in dynamic models of biological systems. *BMC Systems Biology*, 9(1), 74. <http://doi.org/10.1186/s12918-015-0219-2>
- Galazzo, J. L., & Bailey, J. E. (1990). Fermentation pathway kinetics and metabolic flux control in suspended and immobilized *Saccharomyces cerevisiae*. *Enzyme and Microbial Technology*, 12(3), 162–172. [http://doi.org/10.1016/0141-0229\(90\)90033-M](http://doi.org/10.1016/0141-0229(90)90033-M)
- Gombert, A. K., & Nielsen, J. (2000). Mathematical modelling of metabolism. *Current Opinion in Biotechnology*, 11(2), 180–186. [http://doi.org/10.1016/S0958-1669\(00\)00079-3](http://doi.org/10.1016/S0958-1669(00)00079-3)
- Gutenkunst, R. N., Waterfall, J. J., Casey, F. P., Brown, K. S., Myers, C. R., & Sethna, J. P. (2007). Universally sloppy parameter sensitivities in systems biology models. *PLoS Computational Biology*, 3(10), 1871–1878. <http://doi.org/10.1371/journal.pcbi.0030189>
- Hassanzadeh, H. R., & Rouhani, M. (2010). A multi-objective gravitational search algorithm. *Proceedings - 2nd International Conference on Computational Intelligence, Communication Systems and Networks, CICSyN 2010*, 1, 7–12. <http://doi.org/10.1109/CICSyN.2010.32>
- He, Q., & Wang, L. (2007). An effective co-evolutionary particle swarm optimization for constrained engineering design problems. *Engineering Applications of Artificial Intelligence*, 20(1), 89–99. <http://doi.org/10.1016/j.engappai.2006.03.003>
- Idoumghar, L., Melkemi, M., Schott, R., & Aouad, M. I. (2011). Hybrid PSO-SA Type Algorithms for Multimodal Function Optimization and Reducing Energy Consumption in Embedded Systems. *Applied Computational Intelligence and Soft Computing*, 2011, 1–12. <http://doi.org/10.1155/2011/138078>

- Ingber, L. (1993). Simulated annealing: Practice versus theory. *Mathematical and Computer Modelling*, 18(11), 29–57. [http://doi.org/10.1016/0895-7177\(93\)90204-C](http://doi.org/10.1016/0895-7177(93)90204-C)
- Jianyong Sun, Garibaldi, J. M., & Hodgman, C. (2012). Parameter Estimation Using Metaheuristics in Systems Biology: A Comprehensive Review. *IEEE/ACM Transactions on Computational Biology and Bioinformatics*, 9(1), 185–202. <http://doi.org/10.1109/TCBB.2011.63>
- Kang, F., Li, J., & Xu, Q. (2009). Structural inverse analysis by hybrid simplex artificial bee colony algorithms. *Computers and Structures*, 87(13-14), 861–870. <http://doi.org/10.1016/j.compstruc.2009.03.001>
- Kang, L., & Zhang, S. (2016). Application of the Elitist-Mutated PSO and an Improved GSA to Estimate Parameters of Linear and Nonlinear Muskingum Flood Routing Models. *Plos One*, 11(1), e0147338. <http://doi.org/10.1371/journal.pone.0147338>
- Kanungo, T., & Zhen, Q. (2001). A downhill simplex algorithm for estimating morphological degradation model parameters, 0(D). Retrieved from <http://oai.dtic.mil/oai/oai?verb=getRecord&metadataPrefix=html&identifier=ADA458745>
- Karaboga, D., & Akay, B. (2009). A comparative study of Artificial Bee Colony algorithm. *Applied Mathematics and Computation*, 214(1), 108–132. <http://doi.org/10.1016/j.amc.2009.03.090>
- Karaboga, D., & Akay, B. (2009). Artificial bee colony (ABC), harmony search and bees algorithms on numerical optimization. *Proceedings of Innovative Production Machines and Systems Virtual Conference, IPROMS*, 1–6. Retrieved from <http://natcomp.liacs.nl/SWI/papers/artificial.bee.colony.algorithm/abc.harmony.search.and.bees.algorithms.on.numerical.optimization.pdf>
- Karaboga, D., & Basturk, B. (2007). Artificial Bee Colony (ABC) Optimization Algorithm for Solving Constrained Optimization. *Lnai* 4529, 789–798. [http://doi.org/10.1007/978-3-540-72950-1\\_77](http://doi.org/10.1007/978-3-540-72950-1_77)
- Koh, C. H., Nagasaki, M., Saito, A., Wong, L., & Miyano, S. (2010). DA 1.0: parameter estimation of biological pathways using data assimilation approach. *Bioinformatics (Oxford, England)*, 26(14), 1794–6. <http://doi.org/10.1093/bioinformatics/btq276>

- Koshel, R. J. (2002). Enhancement of the downhill simplex method of optimization. *Proceedings of SPIE*, 4832(520), 270–282. <http://doi.org/10.1117/12.486465>
- kumar, Y., & Sahoo, G. (2014). A Review on Gravitational Search Algorithm and its Applications to Data Clustering & Classification. *International Journal of Intelligent Systems and Applications*, 6(6), 79–93. <http://doi.org/10.5815/ijisa.2014.06.09>
- Lee, C.-M., & Ko, C.-N. (2009). Time series prediction using {RBF} neural networks with a nonlinear time-varying evolution {PSO} algorithm. *Neurocomputing*, 73(1–3), 449–460. <http://doi.org/10.1016/j.neucom.2009.07.005>
- Leong, Y. Y., Chong, C. K., Choon, Y. W., En, L., Deris, S., Illias, R. M., ... Saberi, M. (2013). Simulation of Fermentation Pathway Using Bees Algorithm. *Advances In Distributed Computing And Artificial Intelligence Journal*, 1(2), 13–19. <http://doi.org/10.14201/ADCAIJ2012121319>
- Levenberg, K. (1944). A Method for the solution of certain non-linear problems in least squares. *Q. Appl. Math.*, 11(2), 164–168.
- Lillacci, G., & Khammash, M. (2010). Parameter estimation and model selection in computational biology. *PLoS Computational Biology*, 6(3). <http://doi.org/10.1371/journal.pcbi.1000696>
- Liu, M., Shin, D., & Kang, H. Il. (2009). Parameter estimation in dynamic biochemical systems based on adaptive Particle Swarm Optimization. *2009 7th International Conference on Information, Communications and Signal Processing (ICICS)*, 1–5. <http://doi.org/10.1109/ICICS.2009.5397662>
- Llaneras, F., & Picó, J. (2008). Stoichiometric modelling of cell metabolism. *Journal of Bioscience and Bioengineering*, 105(1), 1–11. <http://doi.org/10.1263/jbb.105.1>
- Lumb, J. R. (1987). Computer simulation of biological Systems. *Molecular and Cellular Biochemistry*, 73, 91–98.
- Mallick, S., Ghoshal, S. P., Acharjee, P., & Thakur, S. S. (2013). Optimal static state estimation using improved particle swarm optimization and gravitational search algorithm. *International Journal of Electrical Power and Energy Systems*, 52(1), 254–265. <http://doi.org/10.1016/j.ijepes.2013.03.035>
- Meng, Y., Kazeem, O., & Muller, J. C. (2007). A Hybrid ACO/PSO Control Algorithm for Distributed Swarm Robots. In *2007 IEEE Swarm Intelligence Symposium* (pp. 273–280). IEEE. <http://doi.org/10.1109/SIS.2007.367948>
- Mirjalili, S., & Hashim, S. Z. M. (2010). A new hybrid PSO-GSA algorithm for

- function optimization. *Proceedings of ICCIA 2010 - 2010 International Conference on Computer and Information Application*, (1), 374–377. <http://doi.org/10.1109/ICCIA.2010.6141614>
- Mirjalili, S., Wang, G.-G., & Coelho, L. D. S. (2014). Binary optimization using hybrid particle swarm optimization and gravitational search algorithm. *Neural Computing and Applications*, 25(6), 1423–1435. <http://doi.org/10.1007/s00521-014-1629-6>
- Miro, A., Pozo, C., Guillen-Gosalbez, G., Egea, J. a., & Jiménez, L. (2012). Deterministic global optimization algorithm based on outer approximation for the parameter estimation of nonlinear dynamic biological systems. *BMC Bioinformatics*, 13(1), 90. <http://doi.org/10.1186/1471-2105-13-90>
- Moradi, S., Razi, P., & Fatahi, L. (2011). On the application of bees algorithm to the problem of crack detection of beam-type structures. *Computers and Structures*, 89(23-24), 2169–2175. <http://doi.org/10.1016/j.compstruc.2011.08.020>
- Naik, M. K., & Panda, R. (2015). A New Hybrid CS-GSA Algorithm for Function Optimization. *International Conference on Electrical, Electronics, Signals, Communication and Optimization*, (1), 1–6.
- Ng, S. T., Chong, C. K., Choon, Y. W., Chai, L. E., Deris, S., Illias, R. M., ... Mohamad, M. S. (2013). Estimating Kinetic Parameters for Essential Amino Acid Production in Arabidopsis Thaliana by Using Particle Swarm Optimization. *Jurnal Teknologi*, 64(1), 73–80. <http://doi.org/10.11113/jt.v64.1737>
- Pham, D. T., & Castellani, M. (2009). The Bees Algorithm: modelling foraging behaviour to solve continuous optimization problems. *Proceedings of the Institution of Mechanical Engineers, Part C: Journal of Mechanical Engineering Science*, 223(12), 2919–2938. <http://doi.org/10.1243/09544062JMES1494>
- Pham, D. T., Ghanbarzadeh, A., Koç, E., Otri, S., Rahim, S., & Zaidi, M. (2006). The bees algorithm—a novel tool for complex optimisation problems. *Proceedings of the 2nd International Virtual Conference on Intelligent Production Machines and Systems (IPROMS 2006)*, 454–459. <http://doi.org/http://dx.doi.org/10.1016/B978-008045157-2/50081-X>
- Powell, M. J. D. (2006). The {NEWUOA} software for unconstrained minimization without derivatives. *Large-Scale Nonlinear Optimization*, 83, 255–297. [http://doi.org/doi:10.1007/0-387-30065-1\\_16](http://doi.org/doi:10.1007/0-387-30065-1_16)
- Qian, Z. G., Xia, X. X., & Lee, S. Y. (2009). Metabolic engineering of Escherichia



- coli for the production of putrescine: A four carbon diamine. *Biotechnology and Bioengineering*, 104(4), 651–662. <http://doi.org/10.1002/bit.22502>
- Rashedi, E., Nezamabadi-pour, H., & Saryazdi, S. (2009). GSA: A Gravitational Search Algorithm. *Information Sciences*, 179(13), 2232–2248. <http://doi.org/10.1016/j.ins.2009.03.004>
- Raue, A., Steiert, B., Schelker, M., Kreutz, C., Maiwald, T., Hass, H., ... Timmer, J. (2015). Data2Dynamics: A modeling environment tailored to parameter estimation in dynamical systems. *Bioinformatics*, 31(21), 3558–3560. <http://doi.org/10.1093/bioinformatics/btv405>
- Rezaei Adaryani, M., & Karami, a. (2013). Artificial bee colony algorithm for solving multi-objective optimal power flow problem. *International Journal of Electrical Power & Energy Systems*, 53, 219–230. <http://doi.org/10.1016/j.ijepes.2013.04.021>
- Rodriguez-Fernandez, M., Egea, J. a., & Banga, J. R. (2006). Novel metaheuristic for parameter estimation in nonlinear dynamic biological systems. *BMC Bioinformatics*, 7, 483. <http://doi.org/10.1186/1471-2105-7-483>
- Rodriguez-Fernandez, M., Mendes, P., & Banga, J. R. (2006). A hybrid approach for efficient and robust parameter estimation in biochemical pathways. *BioSystems*, 83(2-3 SPEC. ISS.), 248–265. <http://doi.org/10.1016/j.biosystems.2005.06.016>
- Schaber, J. (2012). Easy parameter identifiability analysis with COPASI. *BioSystems*, 110(3), 183–185. <http://doi.org/10.1016/j.biosystems.2012.09.003>
- Schallau, K., & Junker, B. H. (2010). Simulating Plant Metabolic Pathways with Enzyme-Kinetic Models. *Plant Physiology*, 152(4), 1763–1771. <http://doi.org/10.1104/pp.109.149237>
- Schilling, C., Bogomolov, S., Henzinger, T. A., Podelski, A., & Ruess, J. (2016). Adaptive moment closure for parameter inference of biochemical reaction networks. *Biosystems*. <http://doi.org/10.1016/j.biosystems.2016.07.005>
- Schmidt, H. (2007). SBaddon: High performance simulation for the Systems Biology Toolbox for MATLAB. *Bioinformatics*, 23(5), 646–647. <http://doi.org/10.1093/bioinformatics/btl668>
- Schmidt, H., & Jirstrand, M. (2006). Systems Biology Toolbox for MATLAB: A computational platform for research in systems biology. *Bioinformatics*, 22(4), 514–515. <http://doi.org/10.1093/bioinformatics/bti799>
- Shanhe, J., & Zhicheng, J. (2014). An improved HPSO-GSA with adaptive evolution

- stagnation cycle. In *Proceedings of the 33rd Chinese Control Conference* (pp. 8601–8606). IEEE. <http://doi.org/10.1109/ChiCC.2014.6896444>
- Sheikhalishahi, M., Ebrahimipour, V., Shiri, H., Zaman, H., & Jeihoonian, M. (2013). A hybrid GA-PSO approach for reliability optimization in redundancy allocation problem. *International Journal of Advanced Manufacturing Technology*, 68(1-4), 317–338. <http://doi.org/10.1007/s00170-013-4730-6>
- Shi, Y., & Eberhart, R. C. (1999). Empirical study of particle swarm optimization. *Proceedings of the 1999 Congress on Evolutionary Computation-CEC99*, 1945–1950. <http://doi.org/10.1109/CEC.1999.785511>
- Sun, S., & Peng, Q. (2014). A hybrid PSO-GSA strategy for high-dimensional optimization and microarray data clustering. *2014 IEEE International Conference on Information and Automation, ICIA 2014*, (July), 41–46. <http://doi.org/10.1109/ICInfA.2014.6932623>
- Tashkova, K., Korošec, P., Šilc, J., Todorovski, L., & Džeroski, S. (2011). Parameter estimation with bio-inspired meta-heuristic optimization: modeling the dynamics of endocytosis. *BMC Systems Biology*, 5(1), 159. <http://doi.org/10.1186/1752-0509-5-159>
- Toya, Y., & Shimizu, H. (2013). Flux analysis and metabolomics for systematic metabolic engineering of microorganisms. *Biotechnology Advances*, 31(6), 818–826. <http://doi.org/10.1016/j.biotechadv.2013.05.002>
- Transtrum, M. K., & Qiu, P. (2012). Optimal experiment selection for parameter estimation in biological differential equation models. *BMC Bioinformatics*, 13(1), 181. <http://doi.org/10.1186/1471-2105-13-181>
- Villaverde, A. F., Egea, J. a., & Banga, J. R. (2012). A Cooperative Strategy for Parameter Estimation in Large Scale Systems Biology Models. *BMC Systems Biology*, 6, 75. <http://doi.org/10.1186/1752-0509-6-75>
- Villaverde, A. F., Henriques, D., Smallbone, K., Bongard, S., Schmid, J., Cicin-Sain, D., ... Banga, J. R. (2015). BioPreDyn-bench: a suite of benchmark problems for dynamic modelling in systems biology. *BMC Systems Biology*, 9(1), 8. <http://doi.org/10.1186/s12918-015-0144-4>
- Wang, F.-S., & Sheu, J.-W. (2000). Multiobjective parameter estimation problems of fermentation processes using a high ethanol tolerance yeast. *Chemical Engineering Science*, 55, 3685–3695. [http://doi.org/10.1016/S0009-2509\(00\)00038-5](http://doi.org/10.1016/S0009-2509(00)00038-5)

- Yang, X.-S. (2009). Firefly Algorithms for Multimodal Optimization. *Proceedings of the 5th International Conference on Stochastic Algorithms: Foundations and Applications*, 169–178. [http://doi.org/10.1007/978-3-642-04944-6\\_14](http://doi.org/10.1007/978-3-642-04944-6_14)
- Zhan, C., & Yeung, L. F. (2011). Parameter estimation in systems biology models using spline approximation. *BMC Systems Biology*, 5(1), 14. <http://doi.org/10.1186/1752-0509-5-14>
- Zhang, Y., Meng, Q., Ma, H., Liu, Y., Cao, G., Zhang, X., ... Ma, Y. (2015). Determination of key enzymes for threonine synthesis through in vitro metabolic pathway analysis. *Microbial Cell Factories*, 14(1), 86. <http://doi.org/10.1186/s12934-015-0275-8>
- Zhao, L., & Yang, Y. (2009). PSO-based single multiplicative neuron model for time series prediction. *Expert Systems with Applications*, 36(2 PART 2), 2805–2812. <http://doi.org/10.1016/j.eswa.2008.01.061>
- Zhou, J., Zhang, X., Zhang, G., & Chen, D. (2015). Optimization and Parameters Estimation in Ultrasonic Echo Problems Using Modified Artificial Bee Colony Algorithm. *Journal of Bionic Engineering*, 12(1), 160–169. [http://doi.org/10.1016/S1672-6529\(14\)60110-4](http://doi.org/10.1016/S1672-6529(14)60110-4)