

FACTORS INFLUENCING SENSE OF SECURITY IN RESIDENTIAL
NEIGHBOURHOOD IN JOHOR BAHRU

HAMED NAJAFPOUR

A thesis submitted in fulfilment of the
requirements for the award of the degree of
Doctor of Philosophy (Architecture)

Faculty of Built Environment
Universiti Teknologi Malaysia

FEBRUARY 2015

Who, being loved, is poor?"

Oscar Wild

Dear Mom & Dad,
My Darling little sisters

Without you my world is meaningless

ACKNOWLEDGEMENT

IN THE NAME OF ALLAH, MOST GRACIOUS, MOST COMPASSIONATE

I would like to acknowledge my advisors, Professor Dr. Hasanuddin Bin Lamit, for his astute and expert editing. I would like to express gratitude for their patience, generosity and collaboration.

“Wise father, amiable mother, sweet sisters”

Thank you for your perpetual encouragement and support. Your unwavering love that have shaped my mind and opened the doors of opportunity leading me to become the person I am today. Also I extend my thanks to my father, mother, and my sisters in law, for their charming support.

I would like to thank all of the individuals who have helped me during my thesis study.

ABSTRACT

Sense of security or the lack of it is increasingly becoming one of the main social issues in modern residential neighbourhoods. This research aims to investigate and evaluate the factors influencing sense of security in residential neighbourhoods of Johor Bahru. It also examines the effect of residential neighbourhood's distance from the city centre on resident's sense of security. A questionnaire survey was undertaken as a primary data collection tool. The data were analysed with SmartPLS and SPSS softwares. The SmartPLS was used to evaluate the research questions and construct the research model. Results revealed the appropriateness of designed research model by approving 16 relationships among the research factors. In addition, the research factors associated to economic and demographical background of the research respondents were examined by using SPSS software. The analyses showed the effect of gender, age, income and the distance of selected research study areas (Taman Abad and Taman JP Perdana) to central part of Johor Bahru on sense of security. Finally, the results revealed that residents of residential neighbourhood closer to the city centre feel more insecure compared to residents in farther residential neighbourhoods. The results also revealed that females feel less secure compared to male residents. The sense of insecurity was higher within the higher age groups (50 years and above). Moreover, higher income groups (RM10000/month and above) feel less secure comparing to the residents in lower income groups (below RM1000/month). Urban designers and architects can use the aforementioned results to improve the sense of security in residential neighbourhoods of Johor Bahru by considering the distance of residential neighbourhoods to urban centres and the social composition of residents in terms of gender, age and income status. In closing, the results of this research generally can be helpful in improving the overall quality of life and sense of security in residential neighbourhoods of Johor Bahru.

ABSTRAK

Rasa selamat atau kurangnya rasa selamat semakin menjadi isu sosial utama di dalam kawasan kejiranan perumahan moden. Kajian ini bertujuan untuk menyelidik dan menilai faktor-faktor yang mempengaruhi rasa selamat dikalangan penduduk kejiranan perumahan di Johor Bahru. Ia juga menilai pengaruh jarak kawasan kejiranan dari pusat bandaraya keatas rasa selamat penduduk. Soal selidik merupakan instrumen utama untuk mengumpul data. Perisian SmartPLS dan SPSS digunakan untuk menganalisis data kajian. SmartPLS digunakan untuk menilai soalan kajian dan merekabentuk model kajian. Hasil kajian menunjukkan tahap kesesuaian model penyelidikan yang direka dengan mengesahkan 16 hubungan yang telah dikenal pasti antara konstruk penyelidikan. Selain itu, konstruk kajian (faktor) dalam konteks demografi dan latarbelakang ekonomi responden telah dinilai dengan perisian SPSS. Kajian juga menunjukkan kesan jantina, umur, pendapatan dan jarak kawasan kajian (Taman Abad dan Taman JP Perdana) dengan pusat bandaraya. Secara amnya, hasil kajian menunjukkan penduduk kejiranan yang dekat dengan pusat bandaraya merasa kurang selamat dibandingkan dengan penduduk yang lebih jauh. Kajian turut menyimpulkan bahawa penduduk wanita merasa kurang selamat berbanding penduduk lelaki. Rasa kurang selamat juga tinggi dikalangan kelompok umur lebih tua (50 tahun dan keatas). Rasa kurang selamat juga lebih tinggi dikalangan kelompok berpendapatan tinggi (RM10000/ bulan dan keatas) dibandingkan dengan yang berpendapatan rendah (bawah RM1000/bulan). Hasil kajian boleh membantu perekabentuk bandar, arkitek serta perekabentuk yang lain secara amnya dalam meningkatkan rasa selamat dalam kejiranan perumahan dengan mengambil kira jarak kawasan kejiranan dengan pusat bandar serta komposisi sosial penduduk berkaitan jantina, umur dan pendapatan. Ini secara amnya boleh memperbaiki nilai kehidupan secara keseluruhan di kawasan kejiranan perumahan terutama yang terletak di pinggiran pusat bandaraya.

TABLE OF CONTENTS

CHAPTER	TITLE	PAGE
	DECLARATION	ii
	DEDICATION	v
	ACKNOWLEDGEMENT	ix
	ABSTRACT	x
	ABSTRAK	xi
	TABLE OF CONTENTS	xii
	LIST OF TABLES	xii
	LIST OF FIGURES	xiii
	LIST OF ABBREVIATIONS	xvii
	LIST OF SYMBOLS	xix
	LIST OF APPENDICES	xxi
1	INTRODUCTION	1
	1.1 Background of study	1
	1.2 Problem statement	2
	1.3 Research questions	4
	1.4 Aim and objectives	5
	1.5 Scope of the study	5
	1.6 Theoretical Framework	6
	1.7 Significance of the Study	10
2	LITERATURE REVIEW	12
	2.1 Introduction	12

2.2	The introduction of neighbourhood and sense of security	13
2.3	The definition of neighbourhood	13
2.4	The importance of neighbourhoods	17
2.5	The strong neighbourhood's dimension	18
2.6	How neighbourhood features affect quality of life	20
2.6.1	Physical features	20
2.6.2	Social features	21
2.6.3	Economical features	22
2.7	The assessment of neighbourhood's quality of life	22
2.7.1	Introduction	22
2.7.2	The research's strategy	25
2.7.3	Selection of criteria	25
2.7.4	Factors influencing quality of life in residential neighbourhoods	26
2.7.5	Summary	36
2.8	Factors influence sense of security	38
2.8.1	Introduction	38
2.8.2	The research strategy	38
2.8.3	Selection of criteria	39
2.8.4	Factors Influencing Sense of Security in Residential neighborhoods	39
2.8.5	Grounded group decision making (GGDM)	49
2.8.6	Summary	49
2.8.7	Conclusion	50
3	RESEARCH METHODOLOGY	51
3.1	Research design	51

3.1.1	Sequential mixed method	52
3.2	Study area	54
3.3	Research design and method	55
3.3.1	Undertaking the divers research measurement methods	55
3.4	Data collection	56
3.4.1	Content analysis	56
3.4.2	Questionnaire	57
3.4.3	Sampling process	58
3.5	Translation procedure	63
3.6	Piloting the questionnaire	64
3.6.1	Secondary data	65
3.6.2	Library research	65
3.7	Instruments	66
3.8	The selection of statistical package	67
3.9	Why choosing two statistical packages in this research	69
3.10	Normality test	71
3.11	The selection of statistical techniques	72
3.11.1	The analysis's objectives	72
3.11.2	The focus of analysis	73
3.12	Statistical techniques	74
3.12.1	Constructs' measurement relationships	74
3.12.2	Formative constructs	75
3.12.3	Reflective constructs	76
3.12.4	Construct validation	76
3.12.5	Construct reliability	77

3.12.6	The overview of model assessment	78
3.12.7	Construct validities and reliabilities for reflective constructs assessment	78
3.12.8	Factor analysis	79
3.12.9	Cronbach's alpha	79
3.12.10	Composite reliability	80
3.12.11	Average variance extracted	80
3.12.12	Univariate analysis	81
3.12.13	Bivariate analysis	81
3.12.14	T-test analysis	81
3.12.15	One-Way analysis of variance and tukey's test	82
3.12.16	Hypotheses testing (predicting approach)	83
3.13	Evaluation of the measurements	85
3.13.1	Validity	85
3.13.2	Reliability	88
3.14	The Structure of research methodology	92
3.15	Summary	96
4	CASE STUDY	97
4.1	Introduction	97
4.2	Study area	98
4.3	Johor Bahru's location	100
4.4	Heritage in Johor Bahru city centre	100
4.5	Residential development	101
4.5.1	Johor Bahru structural and local plan	101
4.5.2	Social issues in Johor Bahru	102

4.5.3	Crime scenario and fear of crime in Johor Bahru	103
4.5.4	Economic issues in Johor Bahru	107
4.5.5	Structure of local government	107
4.5.6	Functions of local government	108
4.5.7	Johor Bahru city council (Majlis Bandaraya Johor Bahru)	108
4.5.8	Organizational structure of MBBJ	109
4.5.9	Johor Bahru as the study area	109
4.6	The existing neighborhoods of Johor Bahru	110
4.7	Taman Abad	115
4.8	Taman JP Perdana	116
5	SURVEY DEVELOPMENT OF METHODOLOGY	117
5.1	Introduction	117
5.2	The objectives of data collection	118
5.3	Design of the survey	118
5.4	The basis of questions and questionnaire design	119
5.5	Rating scale development	120
5.6	The construction of the questions relating to specified factors	120
5.6.1	Demographic factors	121
5.6.2	Perception and feeling of security in residential neighborhood	121
5.6.3	Physical participation	122
5.6.4	Walkability	122
5.6.5	Casual interaction between neighbors	122
5.6.6	Time of the day (daytime and night-time)	123

5.6.7	Social cohesion	123
5.6.8	Physical environment	124
5.6.9	Appearance	124
5.6.10	Building design	124
5.6.11	Natural surveillance	125
5.6.12	Street lighting	125
5.6.13	Neighborhood incivilities	125
5.6.14	Fear of crime	126
5.6.15	Perceptions of incivilities	126
5.6.16	Disturbances by neighbours or youngsters	127
5.6.17	Victimization experience	127
5.7	Survey translation	127
5.8	Pilot test method and survey preparation	128
5.9	Conclusion	133
6	ANALYSIS AND FINDINGS	134
6.1	Introduction	134
6.2	Data analysis design	134
6.3	Data collection overview	135
6.4	Data preparation	136
6.5	Descriptive statistics	136
6.6	Statistical analyses overview	139
6.7	Measurement model results of reliability and validity	140
6.8	Hypotheses testing	150
6.8.1	Structural research model assessment	150
6.8.2	Bootstrapping procedure	152

6.8.3	Research hypotheses examination	155
6.8.4	Sense of security formula	164
6.9	Normality test	167
6.10	Comparing research's constructs based on gender	169
6.10.1	Gender differences and sense of security	169
6.10.2	Gender differences and appearance	170
6.10.3	Gender differences and building design	171
6.10.4	Gender differences and casual interaction between neighbours	171
6.10.5	Gender differences and disturbance by neighbours or youngsters	172
6.10.6	Gender differences and during the day	172
6.10.7	Gender differences and during the night	173
6.10.8	Gender differences and fear of crime	173
6.10.9	Gender differences and natural surveillance	174
6.10.10	Gender differences and neighbourhood incivilities	174
6.10.11	Gender differences and perception of incivilities	175
6.10.12	Gender differences and physical environment	176
6.10.13	Gender differences and physical participation	176
6.10.14	Gender differences and social cohesion	177
6.10.15	Gender differences and street lighting	177
6.10.16	Gender differences and victimization experience	178
6.10.17	Gender differences and walkability	178

6.11	Comparing research's constructs based on the distance of neighbourhoods to the city centre of Johor Bahru	179
6.11.1	Distance differences and sense of security	179
6.11.2	Distance differences and appearance	180
6.11.3	Distance differences and building design	180
6.11.4	Distance differences and casual interaction between neighbours	181
6.11.5	Distance differences and disturbance by neighbours or youngsters	181
6.11.6	Distance differences and during the day	182
6.11.7	Distance differences and during the nights	182
6.11.8	Distance differences and fear of crime	183
6.11.9	Distance differences and natural surveillance	183
6.11.10	Distance differences and neighbourhood incivilities	184
6.11.11	Distance differences and perception of incivilities	184
6.11.12	Distance differences and physical environment	185
6.11.13	Distance differences and physical participation	185
6.11.14	Distance differences and social cohesion	186
6.11.15	Distance differences and street lighting	186
6.11.16	Distance differences and victimization experience	187
6.11.17	Distance differences and walkability	187
6.12	Comparing research's constructs and age differences of the respondents	188

6.12.1	Age differences and sense of security	188
6.12.2	Age differences and appearance	190
6.12.3	Age differences and building design	191
6.12.4	Age differences and casual interaction between neighbours	192
6.12.5	Age differences and disturbance by neighbours or youngsters	193
6.12.6	Age differences and time of day (during a day)	194
6.12.7	Age differences on sense of security during night	195
6.12.8	Age differences and fear of crime	196
6.12.9	Age differences and natural surveillance	197
6.12.10	Age differences and neighbourhood incivilities	198
6.12.11	Age differences and perception of incivilities	199
6.12.12	Age differences and physical environment	200
6.12.13	Age differences and physical participation	202
6.12.14	Age differences and social cohesion	203
6.12.15	Age differences and street lighting	204
6.12.16	Age differences and victimization experience	205
6.12.17	Age differences and walkability	206
6.13	Comparing research's constructs and income differences of the respondents	208
6.13.1	Income differences and sense of security	208
6.13.2	Income differences and appearance	210

6.13.3	Income differences and building design	211
6.13.4	Income differences and casual interaction between neighbours	212
6.13.5	Income differences and disturbance by neighbours or youngsters	213
6.13.6	Income differences and during the day	215
6.13.7	Income differences and sense of security during nights	216
6.13.8	Income differences and fear of crime	217
6.13.9	Income differences and natural surveillance	218
6.13.10	Income differences and neighbourhood incivilities	220
6.13.11	Income differences and perception of incivilities	221
6.13.12	Income differences and physical environment	222
6.13.13	Income differences and physical participation	223
6.13.14	Income differences and social cohesion	225
6.13.15	Income differences and street lighting	226
6.13.16	Income differences and victimization experience	227
6.13.17	Income differences and walkability	228
6.14	Conclusion	229
7	DISCUSSION AND CONCLUSION	231
7.1	Introduction	231
7.2	Summary of the research	232
7.3	Discussion of finding	235
7.4	Hypothesis testing	235

7.5	Research constructs comparison based on demographic differences among the residents of johor bahru neighborhoods	241
7.5.1	Demographical factors and sense of security	241
7.5.2	Demographic factors and appearance	242
7.5.3	Demographic factors and building design	244
7.5.4	Demographic factors and casual interaction between neighbours	245
7.5.5	Demographic factors and disturbance by neighbours or youngsters	246
7.5.6	Demographic factors and sense of security during a daytime	248
7.5.7	Demographic factors and sense of security during the night	249
7.5.8	Demographic factors and fear of crime	250
7.5.9	Demographic factors and natural surveillance	251
7.5.10	Demographic factors and neighbourhood incivilities	253
7.5.11	Demographic factors and perception of incivilities	254
7.5.12	Demographic factors and physical environment	256
7.5.13	Demographic factors and physical participation	257
7.5.14	Demographic factors and social cohesion	258
7.5.15	Demographic factors and street lighting	259
7.5.16	Demographic factors and victimization experience	260
7.5.17	Demographic factors and walkability	262

7.6	Research constructs comparison based on distance differences among the chosen neighbourhoods to central part of Johor Bahru	263
7.6.1	Distance differences and sense of security	263
7.6.2	Distance differences and appearance	263
7.6.3	Distance differences and building design	264
7.6.4	Distance differences and casual interaction between neighbours	264
7.6.5	Distance differences and disturbance by neighbours or youngsters	265
7.6.6	Distance differences and during the day	265
7.6.7	Distance differences and during the night	266
7.6.8	Distance differences and fear of crime	266
7.6.9	Distance differences and natural surveillance	266
7.6.10	Distance differences and neighbourhood incivilities	267
7.6.11	Distance differences and perception of incivilities	267
7.6.12	Distance differences and physical environment	268
7.6.13	Distance differences and physical participation	268
7.6.14	Distance differences and social cohesion	269
7.6.15	Distance differences and street lighting	269
7.6.16	Distance differences and victimization experience	269
7.6.17	Distance differences and walkability	270
7.7	The conclusion of the results	270
7.8	Limitations of the research	276

7.9	Recommendations for future research	276
REFERENCES		278
Appendies A-F		309

LIST OF TABLES

TABLE NO.	TITLE	PAGE
2.1	The characteristic of research based on 17 reviewed articles	28
2.2	Factors affecting the quality of life in neighbourhood	29
2.3	The characteristic of research based on 46 reviewed articles	41
2.4	Factors affecting sense of security in urban neighborhoods	43
4.1	Criteria and requirements for town to be declared as city council criteria and requirements	99
4.3	Comparison of crime index 2007-2008	104
4.4	Crime index in johor bahru 2007-2008	104
4.5	Crime statistics in Johor	104
4.6	Crime statistics in Johor Bahru	105
4.7	Crime indexes in Johor Bahru for 2013	106
4.8	Existing neighborhoods in Johor Bahru	111
4.9	Neighborhoods with more acer area and number of buildings than the average	114
6.1	Suitability of the measures	137
6.2	Gender distribution of the respondents	137
6.3	Age distribution of the respondents	138

6.4	Educational statistic of the respondents	138
6.5	Total household income distribution among the respondents	139
6.6	Outer loadings of research indicators	141
6.7	Cross-loadings of latent variables and indicators 1	143
6.8	Cross-loadings of latent variables and indicators 2	145
6.9	Composite reliabilities and cronbachs alpha of constructs in model	147
6.10	Average variance extracted (AVE)	148
6.11	Discriminant validity for model	149
6.12A	Hypothesis testing	154
6.12B	R Square	155
6.12C	The construct's name and number	165
6.12D	The construct's name and number	165
6.12E	Descriptive specification of sense of security	167
7.1	The construct's name and number	239
7.2	The construct's coefficients	239
7.3	The positive or negative effectiveness of each research sub-factors on upper level research factors	273
7.4	The most sensitive groups of residents based on specified research constructs	274

LIST OF FIGURES

FIGURE NO.	TITLE	PAGE
1.1	Factors influencing sense of security diagram	7
1.2	Research constructs' hierarchy diagram	8
1.3	Research constructs differences in terms of diverse demographical backgrounds	9
1.4	Research constructs differences in terms of diverse demographical backgrounds	9
1.5	Research constructs differences in terms of urban neighborhoods' distance to the central part of Johor Bahru	10
3.1	Sequential mixed method (tashakkori and teddlie (2010))	53
4.1	Map of johor bahru city, source: (structure plan of Johor)	100
4.2	Shop houses in jalan trus, Johor Bahru	100
4.3	Existing malay urban villages in city centre. source: sjer cdp 2025	101
4.4	Crime rates in selangor from 2006 to 2007, source: cpps, 2008	103
4.5	Crime rates in johor from 2006 to 2007, source: cpps, 200	103
4.6	Crime rates in johor from 2013, source: numbeo.com	106
4.7	Johor Bahru city centre source: majlis bandaraya johor bahru, (1997)	110

4.8	The distance of johor bahru's residential neighborhood to the city center	113
4.9	The johor bahru's residential neighborhoods' number of houses	113
4.10	The johor Bahru's residential neighborhoods in acres	114
4.11	Taman Abad's location in johor bahru	115
4.12	Taman JP Perdana's location in the map of Johor Bahru	116
5.1	The survey questionnaire design diagram	118
5.2	Two malaysian students assisting in pilot questionnaire distribution	129
5.3	PLS model measurement before removing unacceptable indicators	129
5.4	PLS model measurement after removing unacceptable indicators	131
6.1	Data analysis design's diagram	135
6.2	PLS model measurement	140
6.3	The structural model after bootstrapping approach	151
6.4	Assessment of research model	153
6.4A	Histogram of all variables	168
6.4B	Normal Q-Q plot of sense of security	168
6.5	The line chart of sense of security's changes based on age differences	189
6.6	The line chart of appearances' changes based on age differences	190
6.7	The line chart of building design's changes based on age differences	191

6.8	The line chart of casual interaction between neighbours' changes based on age differences	192
6.9	The line chart of disturbance by neighbours or youngsters' changes based on age differences	193
6.10	The line chart of during the day's changes based on age differences	194
6.11	The line chart of sense of security during the night's changes based on age differences	195
6.12	The line chart of fear of crime's changes based on age differences	196
6.13	The line chart of natural surveillance's changes based on age differences	197
6.14	The line chart of neighbourhood incivilities' changes based on age differences	199
6.15	The line chart of perception of incivilities' changes based on age differences	200
6.16	The line chart of physical environment's changes based on age differences	201
6.17	The line chart of physical participation's changes based on age differences	202
6.18	The line chart of social cohesion's changes based on age differences	203
6.19	The line chart of street lighting's changes based on age differences	204
6.20	The line chart of victimization experience's changes based on age differences	206
6.21	The line chart of walkability's changes based on age differences	207

6.22	The line chart of sense of security's changes based on income differences	209
6.23	The line chart of appearances' changes based on income differences	210
6.24	The line chart of building design's changes based on income differences	211
6.25	The line chart of casual interaction between neighbours' changes based on income differences	213
6.26	The line chart of disturbance by neighbours or youngsters' changes based on income differences	214
6.27	The line chart of during the day's changes based on income differences	215
6.28	The line chart of during the night's changes based on income differences	216
6.29	The line chart of fear of crime's changes based on income differences	218
6.30	The line chart of natural surveillance's changes based on income differences	219
6.31	The line chart of neighbourhood incivilities' changes based on income differences	220
6.32	The line chart of perception of incivilities' changes based on income differences	221
6.33	The line chart of physical environment's changes based on income differences	222
6.34	The line chart of physical participation's changes based on income differences	224
6.35	The line chart of social cohesion's changes based on income differences	225

6.36	The line chart of street lighting's changes based on income differences	226
6.37	The line chart of victimization experience's changes based on income differences	227
6.38	The line chart of walkability's changes based on income differences	229

LIST OF ABBREVIATIONS

GIS	-	Geographic information systems
PLS	-	Partial Least Squares
SPSS	-	Statistical Package for the Social Science
SAS	-	Statistical Analysis System
PCA	-	Principal component analysis
R ²	-	R square
SEM	-	Structural equation modeling
CFA	-	Confirmatory factor analysis
AVE	-	Average variance extracted
CR	-	Composite reliability
VFPIBT	-	Majlis Bandar Johor Bahru Tengah
PBTPG	-	Perjabat Pusat Bandar Tempatan Pasir Gudang
MDK	-	Majlis Bandar Kulai
MBJB	-	Bandar Nusajaya. and Majlis Bandaraya Johor Bahru

MSC	-	Multimedia Super Corridor
SJER	-	South Johor Economic Region
SQLI	-	Social and Quality of Life Index
NAPIC	-	National Property Information Centre
CMV	-	Common method variance

LIST OF SYMBOLS

n	-	Sample Size
Z	-	Z Statistic (Z): For the Level of Confidence of 95%, which is Conventional)
σ	-	The population variance
e	-	Precision
r	-	Correlation
N	-	The number of questions
S_i^2	-	The variance of individual questions (or parts)
S_x^2	-	The variance of the whole test
α	-	Sense of Security's coefficient
β	-	Physical Participation's coefficient
γ	-	Neighborhood Incivilities' coefficient
δ	-	Physical Environment's coefficient
$F1$	-	Sense of Security
$F2$	-	During The Day

<i>F3</i>	-	During The Night
<i>F4</i>	-	Physical Participation
<i>F5</i>	-	Neighbourhood Incivilities
<i>F6</i>	-	Physical Environment
<i>F7</i>	-	Natural Surveillance
<i>F8</i>	-	Victimization Experience
<i>F9</i>	-	Walk-Ability
<i>F10</i>	-	Casual Interaction Between Neighbours
<i>F11</i>	-	Social Cohesion
<i>F12</i>	-	Appearance
<i>F13</i>	-	Building Design
<i>F14</i>	-	Street Lighting
<i>F15</i>	-	Fear of Crime
<i>F16</i>	-	Disturbance By Neighbours or Youngsters
<i>F17</i>	-	Perception of Incivilities

LIST OF APPENDICES

APPENDIX	TITLE	PAGE
A	Questionnaire survey (English version)	309
B	Questionnaire survey (Malay version)	316
C	Questionnaire survey (Chinese version)	324
D	The research questions extracted from the journals associating with sense of security in residential urban neighborhood, the types of five-Likert scales and the way they are presented in the survey questionnaire and questionnaire survey items	332
E	The results of t-test approach	414
F	The results of one-way anova approach	427

CHAPTER 1

INTRODUCTION

1.1 Background of Study

According to Oxford dictionary, security is defined as the state of feeling safe, stable and free from fear or anxiety. In addition, it refers to a condition with the lack of existing and perceived risks to the security for each group or individual. In some cases security refers to when people are in an endurable condition. Being secure and feeling secure are the issues when scholars talk about security. A place has sense of security when people do not feel vulnerable to any threats or risks in the society. Sense of insecurity, crime, antisocial behaviors and disorder affect neighborhoods directly. Moreover, residents' sense of insecurity and the existing crime in the neighborhoods are the main reasons for reducing the attraction of neighborhoods for living, working or visiting (Teck-Hong, T. (2011)).

The main goal of this research is conducted in terms of understanding the most significant factors of sense of security affecting residential neighbourhoods of Johor Bahru.

According to Ditton and Innes (2005), different social groups' interpretation of security is the main factor for introducing and designing the interventions in enhancing neighborhoods' security. In effect, managing the people's impressions about their neighborhoods and what they see and feel when they are in the

neighborhoods, is a vital component due to improve sense of security (Ditton and Innes 2005).

1.2 Problem Statement

Worldwide concern about population growth and rapid urbanization will continue to address crime and sense of insecurity as social problems. The design of buildings and the arrangement of streets and other outdoor spaces can influence crime and level of sense of insecurity. Several studies related to sustainable development define it as reflecting a tension between economic activities and the environment. Evidence suggests that reducing crime and sense of insecurity can improve the quality of life that is an essential factor in producing developments that are more sustainable. In light of the population growth and rapidly urbanization advances all over the world, sense of insecurity and its related issues such as crime and so on has become one of the most serious social problems. In fact, governments and other authorities are trying to overcome this phenomenon by investing a lot of money as in prevention measures. However, this problem is still unresolved as insecure condition in residential neighborhoods and crime rates around the globe continue to escalate. Tackling and reducing the negative impacts of sense of insecurity on human life will inevitably lead to greater regulations and further invite more participation of both the individuals and the community (Marzbali, M. H., Abdullah, A., Razak, N. A., & Tilaki, M. J. M. (2011)).

The most prominent underlying reasons why house buyers in Malaysia want the gated and guarded property is because of the status symbol that goes along with owning a home that is protected and secure (Tan, 2010).

One of the main characteristics of the gated-guarded landscape compound neighborhood is the added security features. Snatch thefts, assaults and rampant break-ins in Malaysian urban areas make house buyers a little more concerned about

their personal security. House buyers generally are willing to pay more to live in this neighborhood because of the security provided by security guards. Better security measures could instill a sense of trust and peace of mind amongst the residents (Teck-Hong, T. (2011)).

Designers and other design professionals should take into consideration the surrounding environment in order to reduce or enhance security rates. The design of buildings and the arrangement of streets, public facilities and other outdoor spaces can affect the opportunity of crime and the level of sense of security. Cozens, Saville and Hillier (2005, p. 343) defined a sustainable community as “secure, perceives itself to be secure and is considered by others to be secure”. However, both sustainability and security are two important factors to be considered during the design process. Sometimes these two elements complement each other. In light of these considerations, mitigating crime and sense of insecurity may improve the quality of human life (Crowe (2000) and Schneider & Kitchen (2002)) which is a basic human need. Safety and security have always been major human needs throughout history (Cozens, 2007a, 2008). Maslow (1970) proposed that the hierarchy of the most basic human needs includes five levels where security needs is at the second level after physiological needs. The organizations of fortifications for castles such as defensive walls, landscaping and moats, which were developed during the Middle Ages, have always, tended to protect occupants from various threats (Cozens (2008) and Schneider & Kitchen (2002)). It is, indeed, an essential task to produce developments that are sustainable. Evidence suggested that integrating physical security in a project from the start rather than modifying it at a later stage can decrease design costs in the long-term (Crowe (2000) and Neill, Rueda, & Savage (2009)). Blunkett, D. (2004) interpreted the improvement of the security as fundamental factor of the new labor project and broader civil renewal. He highlighted that:

Security plays a key role for everything that people do in the society. Therefore, communities can be strengthening, more confident and creative of

responsibility for people for their own lives and well-being by improving more secure societies (Blunkett, D. (2004)).

Therefore, architects, designers and planners should consider security attributes in new developments at the planning and design stage. To do so, this research aims on considering the most effective sense of security factors on residential neighborhoods of Johor Buhro.

1.3 Research Questions

To address the aim of this research the following questions are identified:

Q.1: What are the factors that influence the sense of security in neighborhoods?

Q.2: How is the hierarchy of the sense of security factors influencing Johor Bahru residential neighborhoods? (Establish the levels of relationship of factors).

Q.3: Does the effect of the factors of sense of security differ between diverse demographical backgrounds of Johor Bahru residential neighborhoods?

Q.4: Does the effect of the factors of sense of security differ between diverse socio-economic backgrounds of Johor Bahru residential neighborhoods?

Q.5: Does the effect of the sense of security factors differ between different distances of residential neighborhoods to the central part of Johor Bahru?

1.4 Aim and Objectives

This study aims to ‘consider the factors influencing sense of security in residential neighborhoods’ of Johor Bahru. To address the aim following objectives are identified:

Obj.1: To examine the factors influencing sense of security in residential neighborhoods.

Obj.2: To conduct the hierarchy of the sense of security factors influencing Johor Bahru residential neighborhoods.

Obj.3: To examine the effects of sense of the security factors in terms of diverse demographical backgrounds of Johor Bahru residential neighborhoods.

Obj.4: To consider the effect of sense of the security factors in terms of diverse socio-economic backgrounds of Johor Bahru residential neighborhoods.

Obj.5: To address the effect of urban neighborhoods’ distance to the central part of Johor Bahru in reducing / increasing sense of security.

1.5 Scope of the Study

- a) Establish theoretical framework on factors influence the sense of security. This will be based on literature review, analysis and discussion with experts.

- b) Johor Bahru city is undertaken as case study for this research to examine how the sense of security influences urban neighbourhoods. Johor Bahru, the capital city of the state of Johor, has its area defined within the Inner Ring Road-1124.97 areas of land extending from the inner ring road to Jalan Abu Bakar - Jalan Tun Dr Ismail. Its dense development and clearly by defined streets, make up of major and minor roads, that leads to the Johor Bahru waterfront is accessorized with high commercial and government institutional activities. Regarding the aim of this research, Johor Bahru residential neighbourhoods located at the Malaysia are south as the scope of this research.

- c) Compare the importance of sense of security factors between residential neighbourhoods and background of residents.

1.6 Theoretical Framework

Theatrical framework considered the methods approaches associating with the objectives of this research. To do so, the following charts are developed as guidance for the methodology section.

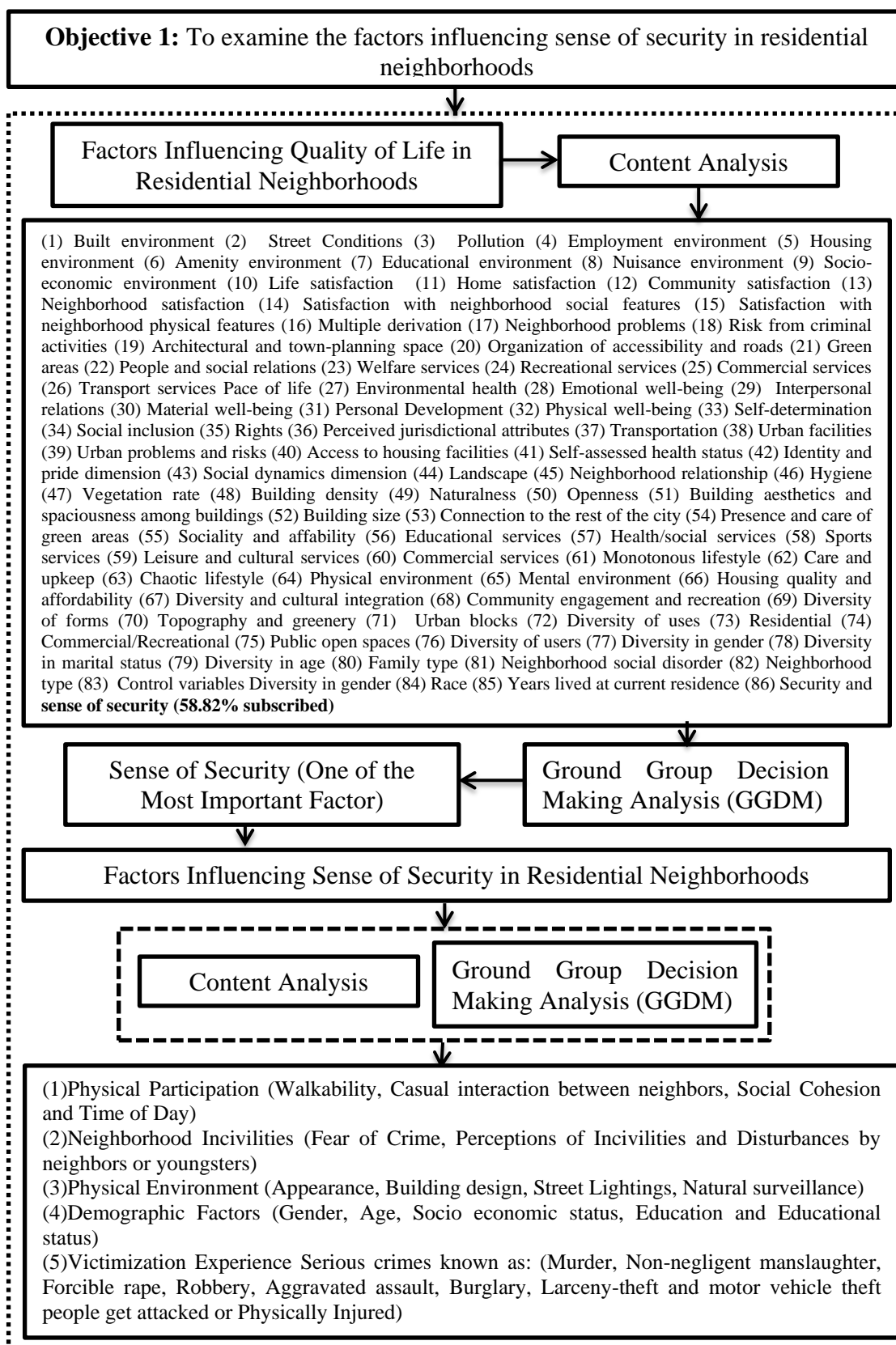


Figure 1.1 Factors Influencing Sense of Security Diagram

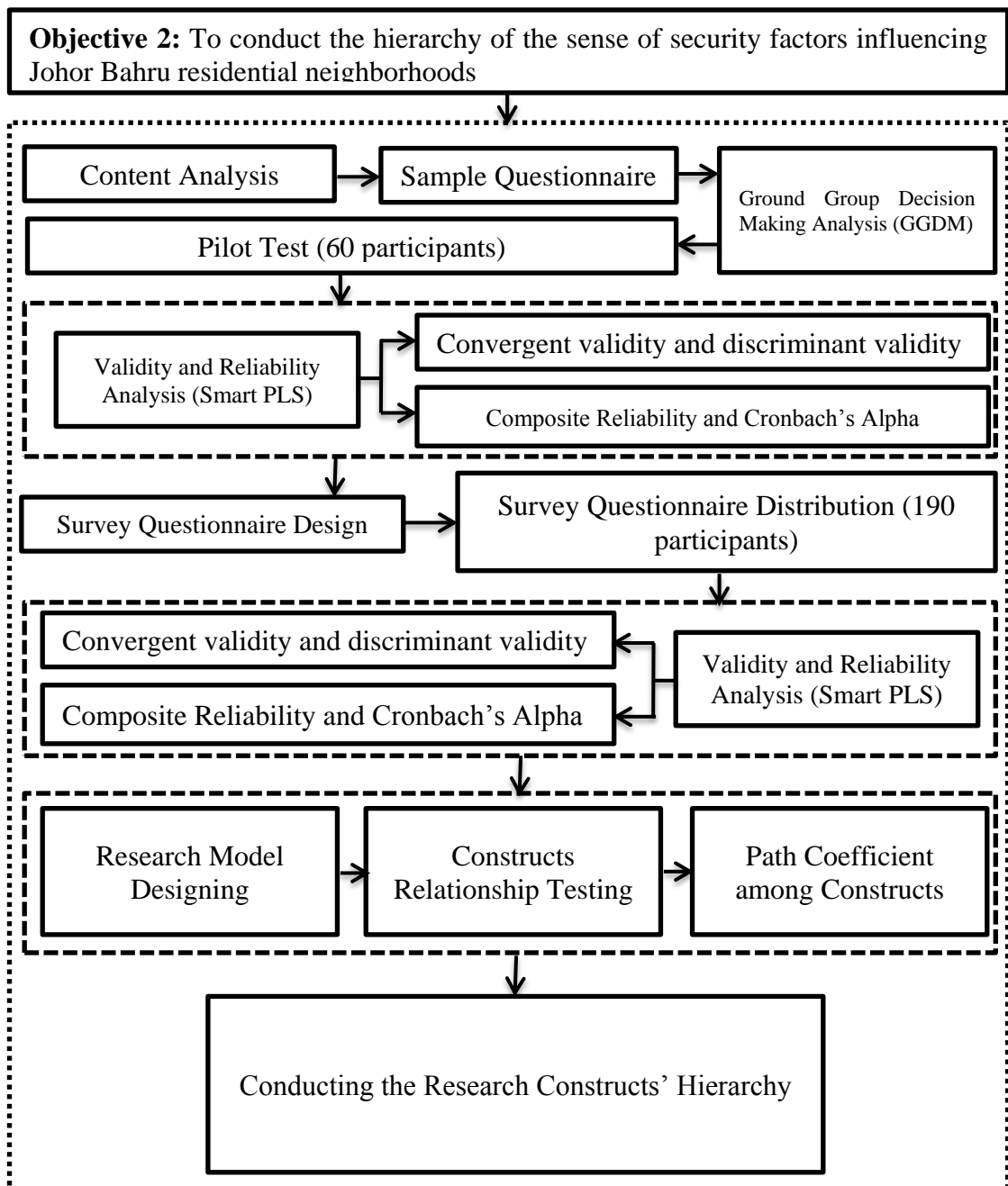


Figure 1.2 Research Constructs' Hierarchy Diagram

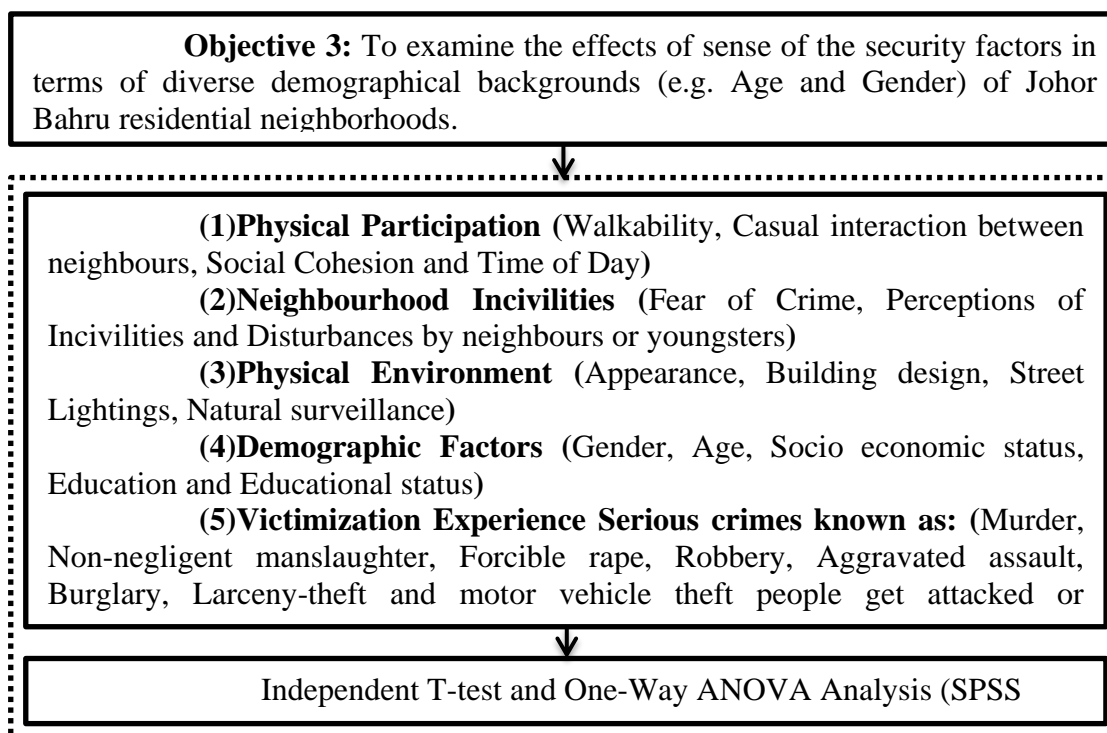


Figure 1.3 Research Constructs Differences in Terms of diverse demographical backgrounds

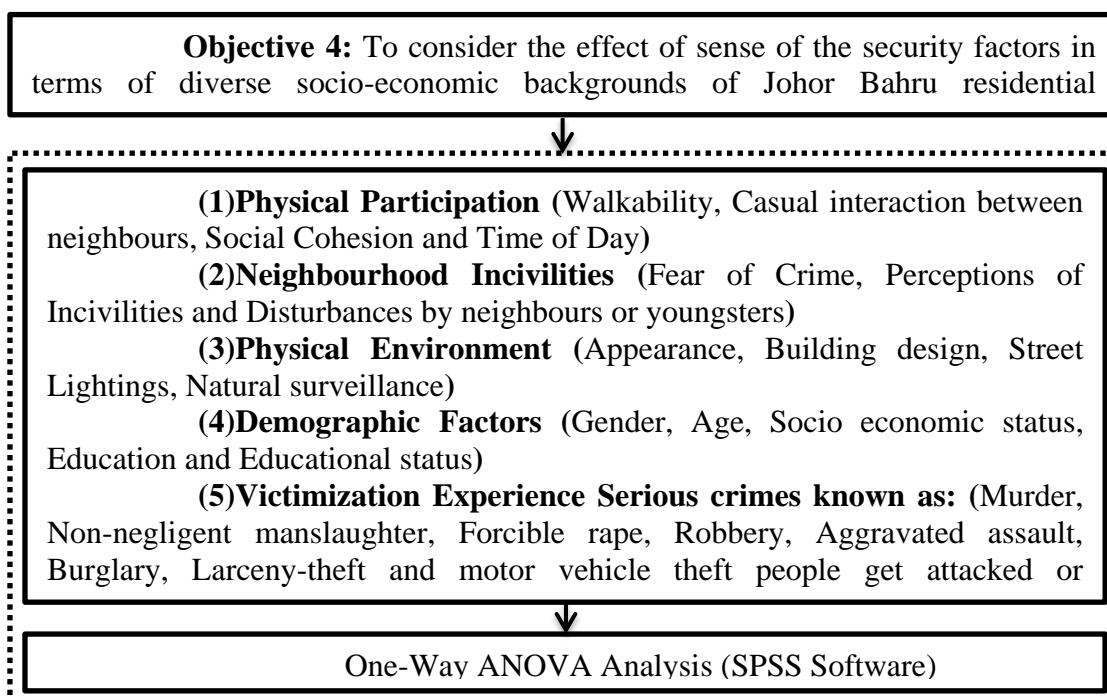


Figure 1.4 Research Constructs Differences in Terms of diverse demographical backgrounds

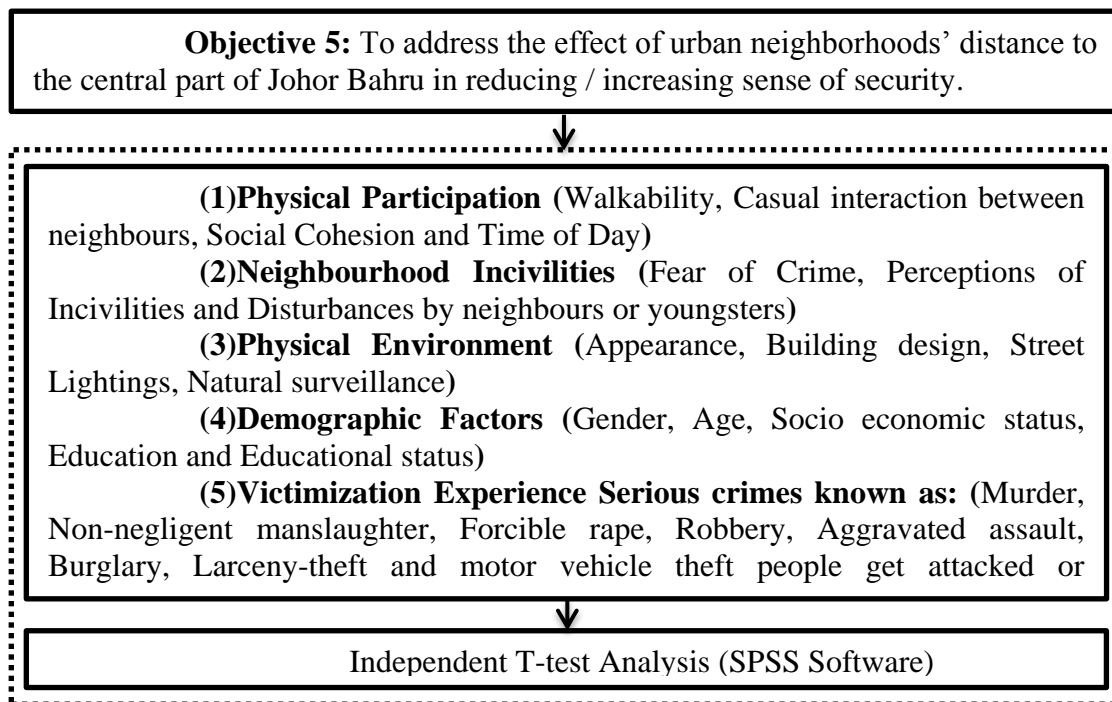


Figure 1.5 Research Constructs Differences in Terms of urban neighborhoods' distance to the central part of Johor Bahru

1.7 Significance of the Study

In terms of human needs, Maslow's hierarchy suggests sustainable environments should cater for psychological needs, safety and security, affiliation (belonging and acceptance), esteem (status) and self-actualization (expression and fulfilment) (McLeod, S. (2007)). It is suggested to create comfortable environments that are of human scale and visually interesting, that allows secure and crime-free human contact, movement and navigation (legibility), that are socially mixed, and that through their design and the disposition of uses are available to all (Carmona, M. (Ed.). (2010)). Since the 1970's it has been noted that certain architectural and planning designs have unintentionally created environments that provide greater opportunities for crime to be committed. To be known as the first generation crime prevention through environmental design (CPIED), this approach focused entirely on

the rational offender, who calculate the potential risks and rewards before committing a crime.

In addition, quality of life based on various demographic and socio-economic situations is influenced by sense of insecurity as important social issue (Franklin et al 2008). Many researches revealed that the definition of sense of insecurity is synonymous with the perception of safety (Baba, Y., & Austin, D. M. (1989)) and others specify the direct relationship between sense of security and quality of life (Michalos, A. C., & Zumbo, B. D. (2000)). Other research defines sense of insecurity as feeling or emotion of fear which comes from the expectation of danger (Ferraro, K. F. (1995), Mark Weir, quoted in Kohm, S. A. (2009)). On the other hand, Karakus et al (2010) argued that sense of insecurity comes from people's reaction to the probable perception of victimization (Karakus, O., McGarrell, E. F., & Basibuyuk, O. (2010)). Moreover, sense of insecurity can affect residents' quality of life more than actual experience of them in residential neighborhoods (Pain 2000 quoted in Wood, L., Shannon, T., Bulsara, M., Pikora, T., McCormack, G., & Giles-Corti, B. (2008)). Therefore, people perception of security, which comes from built environment situation, has a direct relation to the sense of insecurity.

Meanwhile, less academics or practitioner paid attention to sense of security among residents of Johor Bahru residential neighborhoods. Therefore, investigating in aspects, ecological, social, economic and geographical in the Johor Bahru neighborhood at the same time is the aim of this study. It is expected to expand the understanding of more secure communities can be adapted to any other residential neighborhood.

REFERENCES

- Abrams, M. (1973). Subjective social indicators. *Social trends*, 4, 35-50. In United Kingdom Central Statistical Office (eds.) *Social Trends*. Vol. 4. London: Her Majesty's Stationary office.
- Adams, J. S. (1984). The meaning of housing in America. *Annals of the Association of American Geographers*, 74(4), 515-526.
- Adams, J. S., & Gilder, K. S. (1976). Household location and intra-urban migration. *Social areas in cities*, 1, 159-192. in D. T. Herbert and R. S. Johnson (eds.) *Social Area in Cities*. Vol. 2. Chichester, England: John Wiley.
- Afifi, A., May, S., & Clark, V. A. (2003). *Computer-aided multivariate analysis*. CRC Press.
- Ahlbrandt, R. S., Cunningham, J. V., & Baroni, G. C. (1979). *A new public policy for neighborhood preservation*. New York: Praeger.
- Ainsworth, B. E., Wilcox, S., Thompson, W. W., Richter, D. L., & Henderson, K. A. (2003). Personal, social, and physical environmental correlates of physical activity in African-American women in South Carolina. *American journal of preventive medicine*, 25(3), 23-29.
- Albright, J. J., & Park, H. M. (2009). Confirmatory factor analysis using Amos, LISREL, Mplus, and SAS/STAT CALIS. *The Trustees of Indiana University*, 1, 1-85.
- Ali Asgari (2010). "Neighborhood satisfaction in Navab neighborhood", (www.urbanmanagement.ir).
- Altman, I., & Low, S. M. (1992). Place attachment.
- Allen-Hays, R., & Kogl, A. M. (2007). Neighbourhood attachment, social capital building and political participation; a case study of low and moderate-income residents of Waterloo, Iowa. *Iowa, Journal of Urban Affairs*, 29(2), 181-205.

- Andreev, P., Heart, T., Maoz, H., & Pliskin, N. (2009). Validating formative partial least squares (PLS) models: methodological review and empirical illustration.
- Andrews, F. M., & Withey, S. B. (1976). Social indicators of well-being: Americans' perceptions of life quality.
- Aiello, A., Ardone, R. G., & Scopelliti, M. (2010). Neighbourhood planning improvement: Physical attributes, cognitive and affective evaluation and activities in two neighbourhoods in Rome. *Evaluation and program planning*, 33(3), 264-275.
- Angel, S. (1968). *Discouraging crime through city planning*. Center for Planning and Development Research, Institute of Urban and Regional Development, University of California.
- Andrews, F. M. (1970). The squatters of Lima: who they are and what they want. *The Journal of Developing Areas*, 4(2), 211-224.
- Andrews, F. M., & Withey, S. B. (1976). Social indicators of well-being: Americans' perceptions of life quality.
- Appleyard, D. (1973). *Notes on urban perception and knowledge*. na.
- Appleton, J. (1996). The experience of landscape.
- Argyrous, G. (2011). *Statistics for research: with a guide to SPSS*. Sage Publications.
- Arnett, D. B., Laverie, D. A., & Meiers, A. (2003). Developing parsimonious retailer equity indexes using partial least squares analysis: a method and applications. *Journal of Retailing*, 79(3), 161-170.
- Aragones, J. I., & Arredondo, J. M. (1985). Structure of urban cognitive maps. *Journal of Environmental Psychology*, 5(2), 197-212.
- Asadoorian, M. O., & Kantarelis, D. (2005). *Essentials of inferential statistics*. University Press of America.
- Austin, D. M., Furr, L. A., & Spine, M. (2002). The effects of neighborhood conditions on perceptions of safety. *Journal of Criminal Justice*, 30(5), 417-427.
- Austin, P. C., & Tu, J. V. (2004). Bootstrap methods for developing predictive models. *The American Statistician*, 58(2), 131-137.
- Austin, D. M., Woolever, C., & Baba, Y. (1994). Crime and safety-related concerns in a small community. *American Journal of Criminal Justice*, 19(1), 79-97.
- Baker, C. E. (2005). "Protecting the Neighborhood: Study Trough Design". University of Maryland.

- Ball, K., Timperio, A., Salmon, J., Giles-Corti, B., Roberts, R., & Crawford, D. (2007). Personal, social and environmental determinants of educational inequalities in walking: a multilevel study. *Journal of epidemiology and community health, 61*(2), 108-114.
- Bachrach, K. M., & Zautra, A. J. (1985). Coping with a community stressor: The threat of a hazardous waste facility. *Journal of Health and Social Behavior, 127*-141.
- Balfour, J. L., & Kaplan, G. A. (2002). Neighborhood environment and loss of physical function in older adults: evidence from the Alameda County Study. *American Journal of Epidemiology, 155*(6), 507-515.
- Baker, D. A., & Palmer, R. J. (2006). Examining the effects of perceptions of community and recreation participation on quality of life. *Social Indicators Research, 75*(3), 395-418.
- Baba, Y., & Austin, D. M. (1989). Neighborhood environmental satisfaction, victimization, and social participation as determinants of perceived neighborhood safety. *Environment and Behavior, 21*(6), 763-780.
- Barrera, M. (1981). Social support in the adjustment of pregnant adolescents: Assessment issues. *Social networks and social support, 4*, 69-96.
- Behling, O., & Law, K. S. (Eds.). (2000). *Translating questionnaires and other research instruments: Problems and solutions* (Vol. 133). Sage.
- Berry, B. J. L. (1974). *Land use, urban form and environmental quality* (No. 155). University of Chicago, Department of Geography.
- Berrigan, D., Dodd, K., Troiano, R. P., Reeve, B. B., & Ballard-Barbash, R. (2006). Physical activity and acculturation among adult Hispanics in the United States. *Research quarterly for exercise and sport, 77*(2), 147-157.
- Bergen, A., & While, A. (2000). A case for case studies: exploring the use of case study design in community nursing research. *Journal of Advanced Nursing, 31*(4), 926-934.
- Bell, S., & Montarzino, A. (2007). Landscape perception as a reflection of quality of life and social exclusion in rural areas. *Open Space: People Space, 55*.
- Blunkett, D. (2004). *New Challenges for Race Equality and Community Cohesion in the 21st Century: A Speech by the Rt. Hon. David Blunkett MP, Home Secretary, to the Institute of Public Policy Research, 7th July 2004*. Home Office Communications Directorate.

- Black, T. R. (1999). Doing quantitative research in the social sciences. *An integrated approach to research design, measurement and statistics*.
- Booth, M. L., Owen, N., Bauman, A., Clavisi, O., & Leslie, E. (2000). Social–cognitive and perceived environment influences associated with physical activity in older Australians. *Preventive medicine, 31*(1), 15-22.
- Bollen, K.L. (1989). “Structural equations with latent variables”, John Wiley, New York.
- Bryman, A., & Bell, E. (2011). *Business Research Methods 3e*. Oxford university press.
- Bonnes, M., Mannetti, L., Secchiaroli, G., & Tanucci, G. (1990). The city as a multi-place system: An analysis of people—urban environment transactions. *Journal of Environmental Psychology, 10*(1), 37-65.
- Bonnes, M., Bonaiuto, M., & Ercolani, A. P. (1991). Crowding and Residential Satisfaction in the Urban Environment A Contextual Approach. *Environment and Behavior, 23*(5), 531-552.
- Bradford, N. J. (2002). *Why cities matter: Policy research perspectives for Canada*. Ottawa: Canadian Policy Research Networks.
- Brownson, R. C., Baker, E. A., Housemann, R. A., Brennan, L. K., & Bacak, S. J. (2001). Environmental and policy determinants of physical activity in the United States. *American journal of public health, 91*(12), 1995-2003.
- Brown, B. B., Perkins, D. D., & Brown, G. (2004). Crime, New housing, and housing incivilities in a first-ring suburb: Multilevel relationships across time. *Housing Policy Debate, 15*(2), 301-345.
- Breakwell, G. M. (1999). “The identity of places and place identity”. In C. Gallo Barbisio (Ed.), *La rappresentazione del paesaggio [Landscape representation]* (pp. 51–61). Torino: Tirrenia.
- Brown, B., Perkins, D. D., & Brown, G. (2003). Place attachment in a revitalizing neighborhood: Individual and block levels of analysis. *Journal of environmental psychology, 23*(3), 259-271.
- Bruin, M. J., & Cook, C. C. (1997). Understanding constraints and residential satisfaction among low-income single-parent families. *Environment and Behavior, 29*(4), 532-553.
- Burns, R. B. (1997). *Introduction to research methods*. Addison Wesley Longman.

- Burby, R. J., & Weiss, S. F. (1976). *New communities USA*. Lexington, MA: Lexington Books.
- Buttimer, A. and S.T. McDonald (1974). "residential areas: planning, perceptions and preferences", "pp. 163-182 in J.Forbes (ed.) *Studies in Social Science and Planning*. New York: John Wiley.
- Bursik Jr, R. J., & Grasmick, H. G. (1999). *Neighborhoods & Crime*. Lexington Books.
- Cavanagh, S. (1997). Content analysis: concepts, methods and applications. *Nurse researcher*, 4(3), 5-13.
- Alexander, C., Ishikawa, S., & Silverstein, M. (1968). *A pattern language which generates multi-service centers*. Berkeley, CA: Center for Environmental Structure.
- Chaix, B., Merlo, J., Subramanian, S. V., Lynch, J., & Chauvin, P. (2005). Comparison of a spatial perspective with the multilevel analytical approach in neighborhood studies: the case of mental and behavioral disorders due to psychoactive substance use in Malmö, Sweden, 2001. *American Journal of Epidemiology*, 162(2), 171-182.
- Carmona, M. (Ed.). (2010). *Public places, urban spaces: the dimensions of urban design*. Routledge.
- Carmona, M., & Tiesdell, S. (Eds.). (2007). *Urban design reader*. Routledge.
- Cadwallader, M. T. (1979). Neighborhood evaluation in residential mobility. *Environment and Planning A*, 11(4), 393-401.
- Campbell, A., Converse, P. E., & Rodgers, W. L. (1976). *The quality of American life: Perceptions, evaluations, and satisfactions*. Russell Sage Foundation.
- Carnegie, M. A., Bauman, A., Marshall, A. L., Mohsin, M., Westley-Wise, V., & Booth, M. L. (2002). Perceptions of the physical environment, stage of change for physical activity, and walking among Australian adults. *Research quarterly for exercise and sport*, 73(2), 146-155.
- Carp, F. M. (1986). Neighborhood quality perception and measurement. *Housing an aging society: Issues, alternatives, and policy*, 127-140.
- Chang, L. M., Chang, S. I., Ho, C. T., Yen, D. C., & Chiang, M. C. (2011). Effects of IS characteristics on e-business success factors of small-and medium-sized enterprises. *Computers in Human Behavior*, 27(6), 2129-2140.

- Churchill, G. A. (1976). *Marketing Research: Methodological Foundations*. Hinsdale, Illinois: Dryden Press.
- Chin, W. W. (1998). The partial least squares approach to structural equation modeling. *Modern methods for business research*, 295(2), 295-336.
- Chin, W. W., Johnson, N., & Schwarz, A. (2008). A fast form approach to measuring technology acceptance and other constructs. *MIS Quarterly*, 687-703.
- Chi, P. S., & Griffin, M. D. (1980). Social indicators for measuring residential satisfaction in marginal settlements in Costa Rica. *Social Indicators Research*, 8(4), 453-465.
- Charmaz, K. (2011). Grounded theory methods in social justice research. *Sage, Thousand Oaks, CA*, 359-380.
- Chavis, D. M., & Wandersman, A. (1990). Sense of community in the urban environment: A catalyst for participation and community development. *American journal of community psychology*, 18(1), 55-81.
- Christa Freiler, (2004). "Why Strong Neighborhoods Matter: Implications for Policy and Practice", the Research for Strong Neighborhoods Task Force Toronto.
- Churchill, G. A. (1976). *Marketing Research: Methodological Foundations*. Hinsdale, Illinois: Dryden Press.
- Comrey, A. L., & Lee, H. B. (2013). *A first course in factor analysis*. Psychology Press.
- Cochran, W. G. (2007). *Sampling techniques*. John Wiley & Sons.
- Coleman, R. P. (1987). "Attitude Towards Neighborhoods: How American Choose to Live". Cambridge, MA: Joint Center for Urban Studies of MIT and Harvard University.
- Covington, J., & Taylor, R. B. (1991). Fear of crime in urban residential neighborhoods. *The Sociological Quarterly*, 32(2), 231-249.
- Cohen, D. A., Scribner, R. A., & Farley, T. A. (2000). A structural model of health behavior: a pragmatic approach to explain and influence health behaviors at the population level. *Preventive medicine*, 30(2), 146-154.
- Cook, C. C. (1988). Components of neighborhood satisfaction responses from urban and suburban single-parent women. *Environment and Behavior*, 20(2), 115-149.
- Cooper Marcus, C., & Sarkissian, W. (1986). Housing as if people mattered: Site design guidelines for medium-density family housing.

- Costa, P. T., & McCrae, R. R. (1980). Influence of extraversion and neuroticism on subjective well-being: happy and unhappy people. *Journal of personality and social psychology*, 38(4), 668.
- Crowe, T. D. (2000). *Crime prevention through environmental design: applications of architectural design and space management concepts* (2nd ed.): Butterworth-Heinemann.
- Cozens, P. M., Saville, G., & Hillier, D. (2005). Crime prevention through environmental design(CPTED): a review and modern bibliography. *Property Management*, 23(5), 328-356.
- Cozens, P. (2007a). Planning, crime and urban sustainability. *Sustainable Development and Planning III*, 1, 187-196.
- Cozens, P. (2008). Crime prevention through environmental design in Western Australia: planning for sustainable urban futures. *International Journal of Sustainable Development and Planning*, 3(3), 272–292.
- Dahmann, D. C. (1981). Subjective indicators of neighborhood quality. *Measurement of Subjective Phenomena (US Government Printing Office: Washington, DC)*, 97-118. in Denis F. Johnston (ed.), *Measurement of Subjective Phenomena (US Government Printing Office, Washington, DC, pp. 97–118.*
- Dahmann, D. C. (1983). Subjective assessments of neighborhood quality by size of place. *Urban Studies*, 20(1), 31-45.
- Dale, B. (1980). Subjective and objective social indicators in studies of regional social well-being. *Regional Studies*, 14(6), 503-515.
- Collins, P. A., Hayes, M. V., & Oliver, L. N. (2009). Neighbourhood quality and self-rated health: A survey of eight suburban neighbourhoods in the Vancouver Census Metropolitan Area. *Health & place*, 15(1), 156-164.
- Cronbach, L. J. (1949). *Essentials of psychological testing*.
- Cronbach, L. J. (1951). Coefficient alpha and the internal structure of tests. *psychometrika*, 16(3), 297-334.
- Craik, K. H. (1979). "Environmental Psychology", *New Direction in Psychology* 4. New York: Holt, Rinehart and Winston.
- Craik, K. H., & Zube, E. H. (1975). *Issues in perceived environmental quality research*. Institute for Man and Environment, University of Massachusetts.

- Craig, C. L., Brownson, R. C., Cragg, S. E., & Dunn, A. L. (2002). Exploring the effect of the environment on physical activity: a study examining walking to work. *American journal of preventive medicine*, 23(2), 36-43.
- Crank, J. P., Giacomazzi, A., & Heck, C. (2003). Fear of crime in a nonurban setting. *Journal of Criminal Justice*, 31(3), 249-263.
- Crane, J. (1991). Effects of neighborhoods on dropping out of school and teenage childbearing. *The urban underclass*, 299-320.
- Creswell, J. W. (2013). *Research design: Qualitative, quantitative, and mixed methods approaches*. Sage.
- Curtis, Vesta Sarkhosh, and Sarah Stewart. *Birth of the Persian Empire*. IB Tauris, 2005.
- Dassopoulos, A., Batson, C. D., Futrell, R., & Brents, B. G. (2012). Neighborhood connections, physical disorder, and neighborhood satisfaction in Las Vegas. *Urban Affairs Review*, 1078087411434904.
- Davidson, W. B., & Cotter, P. R. (1986). Measurement of Sense of Community Within the Sphere of City1. *Journal of Applied Social Psychology*, 16(7), 608-619.
- Davidson, W. B., & Cotte, P. R. (1989). Sense of community and political participation. *Journal of community psychology*, 17(2), 119-125.
- De Vaus, D. A. (2002). *Surveys in social research*. Psychology Press.
- Dekker, K. (2007). Social capital, neighbourhood attachment and participation in distressed urban areas. A case study in The Hague and Utrecht, the Netherlands. *Housing Studies*, 22(3), 355-379.
- DeLone, G. J. (2008). Public housing and the fear of crime. *Journal of Criminal Justice*, 36(2), 115-125.
- De Bourdeaudhuij, I., Sallis, J. F., & Saelens, B. E. (2003). Environmental correlates of physical activity in a sample of Belgian adults. *American journal of health promotion*, 18(1), 83-92.
- DeFrances, C. J., & Titus, R. M. (1993). Urban planning and residential burglary outcomes. *Landscape and Urban Planning*, 26(1), 179-191.
- De Bourdeaudhuij, I., Sallis, J. F., & Saelens, B. E. (2003). Environmental correlates of physical activity in a sample of Belgian adults. *American journal of health promotion*, 18(1), 83-92.

- Denzin, Norman K. & Lincoln, Yvonna S. (Eds.). (2005). *The Sage Handbook of Qualitative Research* (3rd ed.). Thousand Oaks, CA: Sage
- Diamantopoulos, A., & Winklhofer, H. M. (2001). Index construction with formative indicators: an alternative to scale development. *Journal of marketing research*, 38(2), 269-277.
- Diamantopoulos, A., & Schlegelmilch, B. B. (2000). *Taking the fear out of data analysis: a step-by-step approach* (No. 118). Cengage Learning EMEA.
- Dingemans, D. J., & Datel, R. E. (1979). Field measurements of central city and suburban neighborhood quality. *Journal of Geography*, 78(3), 102-108.
- Dillman, D. A. (1972). Preferences for community living and their implications for population redistribution.
- Ditton, J., & Innes, M. (2005). The role of perceptual intervention in the management of crime fear. *Handbook of crime prevention and community safety. Cullompton: Willan.*
- Diener, E. (2009). Subjective well-being. In *The science of well-being* (pp. 11-58). Springer Netherlands.
- Driscoll, D. L., Appiah, Y. A., Philip, S., and Douglas, J. R. (2007). Merging Qualitative and Quantitative Data in Mixed Methods Research: How To and Why Not, *Ecological and Environmental Anthropology*. 3(1), 19- 28.
- Downey, L. (2006). Using geographic information systems to reconceptualize spatial relationships and ecological context. *AJS; American journal of sociology*, 112(2), 567.
- Downs, R. M., & Stea, D. (Eds.). (1974). *Image and environment: Cognitive mapping and spatial behavior*. Transaction Publishers.
- Dahmann, D. C. (1985). Assessments of neighborhood quality in metropolitan America. *Urban Affairs Review*, 20(4), 511-535.
- Doyle, S., Kelly-Schwartz, A., Schlossberg, M., & Stockard, J. (2006). Active community environments and health: the relationship of walkable and safe communities to individual health. *Journal of the American Planning Association*, 72(1), 19-31.
- Droettboom Jr, T., McAllister, R. J., Kaiser, E. J., & Butler, E. W. (1971). Urban violence and residential mobility. *Journal of the American Planning Association*, 37(5), 319-325.

- Dublin City Development Board, (2012). "Executive Summary". Draft 10-Year Social, Economic and Cultural Strategy for Dublin City.
- Duncan, M., & Mummery, K. (2005). Psychosocial and environmental factors associated with physical activity among city dwellers in regional Queensland. *Preventive medicine*, 40(4), 363-372.
- Eby, J., Kitchen, P., & Williams, A. (2012). Perceptions of quality life in Hamilton's neighbourhood hubs: A qualitative analysis. *Social indicators research*, 108(2), 299-315.
- Edwards, J. R., & Bagozzi, R. P. (2000). On the nature and direction of relationships between constructs and measures. *Psychological methods*, 5(2), 155.
- Ellaway, A., Macintyre, S., & Bonnefoy, X. (2005). Graffiti, greenery, and obesity in adults: secondary analysis of European cross sectional survey. *Bmj*, 331(7517), 611-612.
- Eliasson, I., Knez, I., Westerberg, U., Thorsson, S., & Lindberg, F. (2007). Climate and behaviour in a Nordic city. *Landscape and Urban Planning*, 82(1), 72-84.
- Evenson, K. R., Sarmiento, O. L., Tawney, K. W., Macon, M. L., & Ammerman, A. S. (2003). Personal, social, and environmental correlates of physical activity in North Carolina Latina immigrants. *American journal of preventive medicine*, 25(3), 77-85.
- Eyler, A. A., Brownson, R. C., Bacak, S. J., & Housemann, R. A. (2003). The epidemiology of walking for physical activity in the United States. *Medicine and science in sports and exercise*, 35(9), 1529-1536.
- Ferraro, K. F., & Grange, R. L. (1987). The measurement of fear of crime*. *Sociological inquiry*, 57(1), 70-97.
- Ferraro, K. F. (1995). *Fear of crime: Interpreting victimization risk*. SUNY press.
- Feldman, R. M. (1990). Settlement-identity psychological bonds with home places in a mobile society. *Environment and Behavior*, 22(2), 183-229.
- Feldman, R. M. (1996). Constancy and change in attachments to types of settlements. *Environment and Behavior*, 28(4), 419-445.
- Fisher, B. A., & Ellis, D. G. (1980). *Small group decision making: Communication and the group process*. New York: McGraw-Hill.
- Fink, A. (1995). "How to Design Surveys". London: Sage Publications Ltd.

- Florin, P. R., & Wandersman, A. (1984). Cognitive social learning and participation in community development. *American Journal of Community Psychology, 12*(6), 689-708.
- Fornell, C., & Larcker, D. F. (1981). Evaluating structural equation models with unobservable variables and measurement error. *Journal of marketing research, 39*-50.
- Fornell, C., Johnson, M. D., Anderson, E. W., Cha, J., & Bryant, B. E. (1996). The American customer satisfaction index: nature, purpose, and findings. *The Journal of Marketing, 7*-18.
- Forza, C. (2002). Survey research in operations management: a process-based perspective. *International Journal of Operations & Production Management, 22*(2), 152-194.
- Foster, C., Hillsdon, M., & Thorogood, M. (2004). Environmental perceptions and walking in English adults. *Journal of epidemiology and community health, 58*(11), 924-928.
- Freedman, D. (2009). *Statistical models: theory and practice*. Cambridge University Press.
- Fried, M., & Gleicher, P. (1961). Some sources of residential satisfaction in an urban slum. *Journal of the American Institute of Planners, 27*(4), 305-315.
- Fried, M. (2000). Continuities and discontinuities of place. *Journal of environmental psychology, 20*(3), 193-205.
- Franklin, T. W., Franklin, C. A., & Fearn, N. E. (2008). A multilevel analysis of the vulnerability, disorder, and social integration models of fear of crime. *Social Justice Research, 21*(2), 204-227.
- Frankfort-Nachmias, C., & Leon-Guerrero, A. (2010). *Social statistics for a diverse society*. Sage Publications.
- Francescato, G., Weidemann, S., & Anderson, J. R. (1989). Evaluating the built environment from the users' point of view: an attitudinal model of residential satisfaction. In *Building evaluation* (pp. 181-198). Springer US.
- Galster, G. (2001). On the nature of neighbourhood. *Urban studies, 38*(12), 2111-2124.
- Garofalo, J. (1979). Victimization and the fear of crime. *Journal of Research in Crime and Delinquency, 16*(1), 80-97.

- Garavan, T. N., & McGuire, D. (2001). Competencies and workplace learning: Some reflections on the rhetoric and the reality. *Journal of Workplace Learning*, 13, 144-163.
- George C. Galster. (1987). *Homeowners and neighborhood reinvestment*. Duke University Press.
- Glaster, G. C., & GARRY, W. H. (1981). Residential satisfaction: contextual and compositional correlates. *Environmental and Behavior*, 13(6), 737-758.
- Galster, G. C., & Hesser, G. W. (1981). Residential satisfaction compositional and contextual correlates. *Environment and Behavior*, 13(6), 735-758.
- Gay, L. R., & Airasian, P. (2000). Competencies for analysis and application. *Educational Research. Florida International University*, 448-457.
- Gefen, D., & Straub, D. (2005). A practical guide to factorial validity using PLS-Graph: Tutorial and annotated example. *Communications of the Association for Information systems*, 16(1), 5.
- Gilchrist, E., Bannister, J., Ditton, J., & Farrall, S. (1998). Women and the 'fear of crime' challenging the accepted stereotype. *British Journal of Criminology*, 38(2), 283-298.
- Gliem, J. A., & Gliem, R. R. (2003). Calculating, interpreting, and reporting Cronbach's alpha reliability coefficient for Likert-type scales. Midwest Research-to-Practice Conference in Adult, Continuing, and Community Education.
- Giles-Corti, B., & Donovan, R. J. (2002). The relative influence of individual, social and physical environment determinants of physical activity. *Social science & medicine*, 54(12), 1793-1812.
- Giles-Corti, B., & Donovan, R. J. (2002). Socioeconomic status differences in recreational physical activity levels and real and perceived access to a supportive physical environment. *Preventive medicine*, 35(6), 601-611.
- Giuliani, M. V., Ferrara, F., & Barabotti, S. (2003). "One attachment or more?," In G. Moser, E. Pol, Y. Bernard, M. Bonnes, J. Corraliza, & V. Giuliani (Eds.), *People, places, and sustainability: 21st Century Metropolis* (pp. 111-122). Göttingen, Germany: Hogrefe & Huber.
- Given, Lisa M. (2008). *The Sage encyclopedia of qualitative research methods*. Los Angeles, Calif.: Sage Publications.

- Gomme, P., & Greenwood, J. (1995). On the cyclical allocation of risk. *Journal of Economic dynamics and control*, 19(1), 91-124.
- Godbey, G. C., Caldwell, L. L., Floyd, M., & Payne, L. L. (2005). Contributions of leisure studies and recreation and park management research to the active living agenda. *American journal of preventive medicine*, 28(2), 150-158.
- Gregory, R. J. (2004). *Psychological testing: History, principles, and applications*. Allyn & Bacon.
- Greenleaf, E. A. (1992). Improving rating scale measures by detecting and correcting bias components in some response styles. *Journal of Marketing Research*, 29(2), 176-188.
- Grant, R. M. (1996). Toward a Knowledge-Based Theory of the firm. *Strategic management journal*, 17(S2), 109-122.
- Grannis, R. (1998). The Importance of Trivial Streets: Residential Streets and Residential Segregation 1. *American Journal of Sociology*, 103(6), 1530-1564.
- De Graaff, T., Florax, R. J., Nijkamp, P., & Reggiani, A. (2001). A general misspecification test for spatial regression models: dependence, heterogeneity, and nonlinearity. *Journal of Regional Science*, 41(2), 255-276.
- Grannis, R. (2005). T-Communities: Pedestrian Street Networks and Residential Segregation in Chicago, Los Angeles, and New York. *City & Community*, 4(3), 295-321.
- Gray, D. E. (2013). *Doing research in the real world*. Sage.
- Gravetter, F., & Wallnau, L. (2006). *Statistics for the behavioral sciences*. Cengage Learning.
- Green, S. B., & Salkind, N. J. (2010). *Using SPSS for Windows and Macintosh: Analyzing and understanding data*. Prentice Hall Press.
- Greenberg, S. W., & Rohe, W. M. (1984). Neighborhood Design and Crime A Test of Two Perspectives. *Journal of the American Planning Association*, 50(1), 48-61.
- Gudi, A. (2008). Effective knowledge integration in emergency response organizations.
- Gustafson, P. (2001). Meanings of place: Everyday experience and theoretical conceptualizations. *Journal of environmental psychology*, 21(1), 5-16.

- Hair, J. F., Tatham, R. L., Anderson, R. E., & Black, W. (2006). *Multivariate data analysis* (Vol. 6). Upper Saddle River, NJ: Pearson Prentice Hall.
- Harrison, R. A., Gemmell, I., & Heller, R. F. (2007). The population effect of crime and neighbourhood on physical activity: an analysis of 15 461 adults. *Journal of epidemiology and community health, 61*(1), 34-39.
- Harrison, J., & Sarre, P. (1975). Personal construct theory in the measurement of environmental images. *Environment and Behavior*.
- Hale, C. (1996). Fear of crime: A review of the literature. *International review of Victimology, 4*(2), 79-150.
- Hay, R. (1998). Sense of place in developmental context. *Journal of environmental psychology, 18*(1), 5-29.
- Hartnagel, T. F. (1979). The perception and fear of crime: Implications for neighborhood cohesion, social activity, and community affect. *Social Forces, 58*(1), 176-193.
- Henseler, J., & Fassott, G. (2010). Testing moderating effects in PLS path models: An illustration of available procedures. In *Handbook of partial least squares* (pp. 713-735). Springer Berlin Heidelberg.
- Herbert, D., & Davidson, N. (1994). Modifying the built environment: the impact of improved street lighting. *Geoforum, 25*(3), 339-350.
- Hinkin, T. R., Tracey, J. B., & Enz, C. A. (1997). Scale construction: Developing reliable and valid measurement instruments. *Journal of Hospitality & Tourism Research, 21*(1), 100-120.
- Hidalgo, M. C., & Hernandez, B. (2001). Place attachment: Conceptual and empirical questions. *Journal of environmental psychology, 21*(3), 273-281.
- Hooker, S. P., Wilson, D. K., Griffin, S. F., & Ainsworth, B. E. (2005). PEER REVIEWED: Perceptions of Environmental Supports for Physical Activity in African American and White Adults in a Rural County in South Carolina. *Preventing chronic disease, 2*(4).
- Houts, S., & Kassab, C. (1997). Rotter's social learning theory and fear of crime: Differences by race and ethnicity. *Social science quarterly, 78*(1), 122-136.
- Hourihan, K. (1979). The evaluation of urban neighbourhoods 2: preference. *Environment and Planning A, 11*(12), 1355-1366.

- Hoehner, C. M., Brennan Ramirez, L. K., Elliott, M. B., Handy, S. L., & Brownson, R. C. (2005). Perceived and objective environmental measures and physical activity among urban adults. *American journal of preventive medicine*, 28(2), 105-116.
- Hsieh, H. F., & Shannon, S. E. (2005). Three approaches to qualitative content analysis. *Qualitative health research*, 15(9), 1277-1288.
- Hur, M., Nasar, J. L., & Chun, B. (2010). Neighborhood satisfaction, physical and perceived naturalness and openness. *Journal of Environmental Psychology*, 30(1), 52-59.
- Hulland, J. (1999). Use of partial least squares (PLS) in strategic management research: a review of four recent studies. *Strategic management journal*, 20(2), 195-204.
- Humpel, N., Owen, N., Iverson, D., Leslie, E., & Bauman, A. (2004). Perceived environment attributes, residential location, and walking for particular purposes. *American journal of preventive medicine*, 26(2), 119-125.
- Park, H. M. (2003). *Comparing group means: t-tests and one-way ANOVA using Stata, SAS, R, and SPSS*. Technical Working Paper. The University Information Technology Services (UITS) Centre for Statistical and Mathematical Computing, Indiana University.
- Huston, S. L., Evenson, K. R., Bors, P., & Gizlice, Z. (2003). Neighborhood environment, access to places for activity, and leisure-time physical activity in a diverse North Carolina population. *American Journal of Health Promotion*, 18(1), 58-69.
- Humpel, N., Owen, N., & Leslie, E. (2002). Environmental factors associated with adults' participation in physical activity: a review. *American journal of preventive medicine*, 22(3), 188-199.
- Jacobs, J. (2010). The Death and Life of Great American Cities. *The Blackwell City Reader*. London: John Wiley & Sons, 273-278.
- Jarvis, C. B., MacKenzie, S. B., & Podsakoff, P. M. (2003). A critical review of construct indicators and measurement model misspecification in marketing and consumer research. *Journal of consumer research*, 30(2), 199-218.
- Newman, O. (1972). *Defensible Spaces, People & Design in Violent City*.
- Janson, P., & Ryder, L. K. (1983). Crime and the elderly: The relationship between risk and fear. *The Gerontologist*, 23(2), 207-212.

- Jorgensen, B. S., & Stedman, R. C. (2001). Sense of place as an attitude: Lakeshore owners attitudes toward their properties. *Journal of environmental psychology*, 21(3), 233-248.
- Kasl, S. V., & Harburg, E. (1972). Perceptions of the neighborhood and the desire to move out. *Journal of the American Institute of Planners*, 38(5), 318-324.
- Kawachi, I., Kennedy, B. P., & Wilkinson, R. G. (1999). Crime: social disorganization and relative deprivation. *Social science & medicine*, 48(6), 719-731.
- Kanter, R. M. (1972). *Commitment and community: Communes and utopias in sociological perspective* (Vol. 36). Harvard University Press.
- Kazem Jajromi, (2009). "Evaluation of quality of life in Gonbad", www.urbanmanagement.ir.
- Karakus, O., McGarrell, E. F., & Basibuyuk, O. (2010). Fear of crime among citizens of Turkey. *Journal of Criminal Justice*, 38(2), 174-184.
- Keller, G. (2011). *Statistics for management and economics*. Cengage Learning.
- Kerlinger, F. N., & Lee, H. B. (1964). *Foundations of behavioral research: Educational and psychological inquiry*. New York: Holt, Rinehart and Winston.
- Keane, C. (1998). Evaluating the influence of fear of crime as an environmental mobility restrictor on women's routine activities. *Environment and Behavior*, 30(1), 60-74.
- Keller, S. (1968). *The urban neighborhood: A sociological perspective* (Vol. 33). New York: Random House.
- Kindt, M., & van den Hout, M. (2003). Dissociation and memory fragmentation: Experimental effects on meta-memory but not on actual memory performance. *Behaviour Research and Therapy*, 41(2), 167-178.
- Kindt, M., Van den Hout, M., & Buck, N. (2005). Dissociation related to subjective memory fragmentation and intrusions but not to objective memory disturbances. *Journal of Behavior Therapy and Experimental Psychiatry*, 36(1), 43-59.
- Kinncar, T. C., & Taylor, J. R. (1996). *Marketing research: an applied approach*.
- King, A. C., Castro, C., Wilcox, S., Eyler, A. A., Sallis, J. F., & Brownson, R. C.

- (2000). Personal and environmental factors associated with physical inactivity among different racial–ethnic groups of US middle-aged and older-aged women. *Health psychology, 19*(4), 354.
- Knight, A., & Ruddock, L. (Eds.). (2009). *Advanced research methods in the built environment*. John Wiley & Sons.
- Korpela, K. M. (1989). Place-identity as a product of environmental self-regulation. *Journal of Environmental psychology, 9*(3), 241-256.
- Koskela, H., & Pain, R. (2000). Revisiting fear and place: women's fear of attack and the built environment. *Geoforum, 31*(2), 269-280.
- Kozma, A., Stone, S., & Stones, M. J. (2000). Stability in components and predictors of subjective well-being (SWB): Implications for SWB structure. In *Advances in quality of life theory and research* (pp. 13-30). Springer Netherlands.
- Kohm, S. A. (2009). Spatial Dimensions of Fear in a High-Crime Community: Fear of Crime or Fear of Disorder? 1. *Canadian Journal of Criminology and Criminal Justice/La Revue canadienne de criminologie et de justice pénale, 51*(1), 1-30.
- Krause, N. (1996). Neighborhood deterioration and self-rated health in later life. *Psychology and aging, 11*(2), 342.
- Kruger, D. J., Hutchison, P., Monroe, M. G., Reischl, T., & Morrel-Samuels, S. (2007). Assault injury rates, social capital, and fear of neighborhood crime. *Journal of Community Psychology, 35*(4), 483-498.
- Kumar, R. (1999). “Research Methodology: A Step-by-Step Guide for Beginners”, London: Sage Publications Ltd.
- Kuz, T. J. (1978). Quality of life, an objective and subjective variable analysis. *Regional Studies, 12*(4), 409-417.
- Ladd, F. C. (1970). Black youths view their environment: Neighborhood maps. *Environment and Behavior*.
- Lane, J., & Meeker, J. W. (2000). Subcultural diversity and the fear of crime and gangs. *Crime & Delinquency, 46*(4), 497-521.
- Lang, J. (1994). *Urban design: the American experience*. John Wiley & Sons.
- Lansing, J. B., Marans, R. W., & Zehner, R. B. (1970). *Planned residential environments* (No. 269 pp).
- Larsen, R. J., Diener, E. D., & Emmons, R. A. (1985). An evaluation of subjective well-being measures. *Social Indicators Research, 17*(1), 1-17.

- LaGrange, R. L., & Ferraro, K. F. (1989). ASSESSING AGE AND GENDER DIFFERENCES IN PERCEIVED RISK AND FEAR OF CRIME*. *Criminology*, 27(4), 697-720.
- Leslie, E., Saelens, B., Frank, L., Owen, N., Bauman, A., Coffee, N., & Hugo, G. (2005). Residents' perceptions of walkability attributes in objectively different neighbourhoods: a pilot study. *Health & place*, 11(3), 227-236.
- Lewis, D. A., & Maxfield, M. G. (1980). Fear in the neighborhoods: An investigation of the impact of crime. *Journal of Research in Crime and Delinquency*, 17(2), 160-189.
- Lee, B. A., & Guest, A. M. (1983). Determinants of Neighborhood Satisfaction: A Metropolitan-Level Analysis*. *The Sociological Quarterly*, 24(2), 287-303.
- Lee, S. (2009). Narrated Landscape as Counterweight to Perception of Placelessness in Contemporary Urban Landscape: Re-Visioning Place in Gwangbok-Dong and Nampo-Dong, Busan, South Korea. *ProQuest LLC*.
- Levin, I., & Stokes, J. P. (1989). Dispositional approach to job satisfaction: Role of negative affectivity. *Journal of applied psychology*, 74(5), 752.
- Li, F., Fisher, K. J., Brownson, R. C., & Bosworth, M. (2005). Multilevel modelling of built environment characteristics related to neighbourhood walking activity in older adults. *Journal of epidemiology and community health*, 59(7), 558-564.
- Limayem, M., Khalifa, M., & Chin, W. W. (2004). CASE tools usage and impact on system development performance. *Journal of Organizational Computing and Electronic Commerce*, 14(3), 153-174.
- Lim, K., & Taylor, L. (2005). Factors associated with physical activity among older people—a population-based study. *Preventive Medicine*, 40(1), 33-40.
- Lloyd, K. M., & Auld, C. J. (2002). The role of leisure in determining quality of life: Issues of content and measurement. *Social Indicators Research*, 57(1), 43-71.
- Long, D. A., & Perkins, D. D. (2007). Community social and place predictors of sense of community: A multilevel and longitudinal analysis. *Journal of Community Psychology*, 35(5), 563-581.
- Long, J. S., & Freese, J. (2006). *Regression models for categorical dependent variables using Stata*. Stata press.
- Lodico, M. G., Spaulding, D. T., & Voegtle, K. H. (2010). *Methods in educational research: From theory to practice* (Vol. 28). John Wiley & Sons.

- Lupton, R. (2003). Neighbourhood effects: can we measure them and does it matter?. *LSE STICERD Research Paper No. CASE073*.
- Lu, M. (1999). Determinants of residential satisfaction: Ordered logit vs. regression models. *Growth and Change*, 30(2), 264-287.
- Lynch, K. (1960). *The image of the city* (Vol. 11). MIT press.
- Malhotra, N. K., Birks, D. F., Palmer, A., & Koenig-Lewis, N. (2000). Market research: an applied approach. *Journal of marketing management*, 27, 1208-1213.
- Marans, R. W. (1976). Perceived quality of residential environments. In *Perceiving environmental quality* (pp. 123-147). Springer US.
- Marans, R. W., & Rodgers, W. (1975). Toward an understanding of community satisfaction. *Metropolitan American. Washing-ton, DC: National Academy of Science*, 311-375.
- Marino Bonaiuto, Ferdinando Fornara and Mirilia Bonnes (2003). "Indexes of perceived residential environment quality and neighborhood attachment in urban environments", *Landscape and Urban Planning* 65. Pp, 41–52.
- Marzbali, M. H., Abdullah, A., Razak, N. A., & Tilaki, M. J. M. (2011). A review of the effectiveness of crime prevention by design approaches towards sustainable development. *Journal of Sustainable Development*, 4(1), p160.
- McLeod, S. (2007). Maslow's hierarchy of needs. *Simply Psychology*.
- May, T. (2011). *Social research: Issues, methods and research*. McGraw-Hill International.
- May, D. C., & Dunaway, R. G. (2000). Predictors of fear of criminal victimization at school among adolescents. *Sociological Spectrum*, 20(2), 149-168.
- Mayhew, P., Clarke, R. V. G., Burrows, J. N., Hough, J. M., & Winchester, S. W. C. (1979). Crime in Public View, Home Office Research Study No. 49. *Her Majesty's Stationary Office, London*.
- Marchand, D. (2003). "Representation of the city and image of the centre in two different urban structures: A modern and a traditional town", In G. Moser, E. Pol, Y. Bernard, M. Bonnes, J. A. Corraliza, & M. V. Giuliani (Eds.), *People, places and sustainability* (pp. 11–24). Goettingen, Germany: Hogrefe & Huber.
- Mannarini, T., & Fedi, A. (2009). Multiple senses of community: The experience and meaning of community. *Journal of Community Psychology*, 37(2), 211-227.

- Manzo, L. C. (2003). Beyond house and haven: Toward a revisioning of emotional relationships with places. *Journal of environmental psychology*, 23(1), 47-61.
- Marshall, Catherine & Rossman, Gretchen B. (1998). *Designing Qualitative Research*. Thousand Oaks, CA: Sage.
- Merriam, S. B. (1998). *Qualitative Research and Case Study Applications in Education. Revised and Expanded from "Case Study Research in Education."*. Jossey-Bass Publishers, 350 Sansome St, San Francisco, CA 94104.
- Mendenhall, W., Beaver, R., & Beaver, B. (2012). *Introduction to probability and statistics*. Cengage Learning.
- McNeill, L. H., Wyrwich, K. W., Brownson, R. C., Clark, E. M., & Kreuter, M. W. (2006). Individual, social environmental, and physical environmental influences on physical activity among black and white adults: a structural equation analysis. *Annals of Behavioral Medicine*, 31(1), 36-44.
- Mitchell, V. W. (1996). "Assessing the reliability and validity of questionnaire", *Journal of Applied Management Studies* 5 (2): 199-217.
- Michelson, W. (1977). *Environmental choice, human behavior, and residential satisfaction*. New York: Oxford University Press.
- Micheal Pacione, (2003). "Urban environmental quality and human wellbeing", *Landscape and Urban Planning* 65 (2003) 19–30.
- Greenberg, M., & Crossney, K. (2007). Perceived neighborhood quality in the United States: Measuring outdoor, housing and jurisdictional influences. *Socio-Economic Planning Sciences*, 41(3), 181-194.
- Milgram, S., & Jodelet, D, (1976). "Psychological maps of Paris", In A. Proshansky, W. H. Ittelson, & L. G. Rivlin (Eds.), *Environmental psychology: People and their physical settings*. New York: Holt, Rinehart and Winston.
- Miller, F. D., Tsemberis, S., Malia, G. P., & Grega, D. (1980). Neighborhood satisfaction among urban dwellers. *Journal of Social Issues*, 36(3), 101-117.
- Michalos, A. C., & Zumbo, B. D. (2000). Criminal victimization and the quality of life. *Social Indicators Research*, 50(3), 245-295.
- Mohit, M. A., Ibrahim, M., & Rashid, Y. R. (2010). Assessment of residential satisfaction in newly designed public low-cost housing in Kuala Lumpur, Malaysia. *Habitat International*, 34(1), 18-27.

- Mohai, P., & Saha, R. (2006). Reassessing racial and socioeconomic disparities in environmental justice research. *Demography*, 43(2), 383-399.
- Moore, P. W. (1980). Measuring Residential Environmental Quality. *Historical Methods: A Journal of Quantitative and Interdisciplinary History*, 13(4), 193-203.
- Mohammad.Reza. Pour jaafar, (2008). "Criteria for evaluating the quality of life in Iran", (www.urban management.ir).
- Mota, J., Lacerda, A., Santos, M.P., Ribeiro, J.C., Carvalho, J., (2007). "Perceived neighborhood environments and physical activity in an elderly sample", *Percept. Mot. skills* 104, 438-444.
- Morris, E. W., & Winter, M. (1978). *Housing, family, and society*. John Wiley and Sons.
- Mohammad. Reza. Rezvani, (2011). "Assessment of quality of life in Norabad", (www.urban management.ir).
- Mullen, M. R. (1995). Diagnosing measurement equivalence in cross-national research. *Journal of International Business Studies*, 573-596.
- Nasar, J. L., & Fisher, B. (1993). 'Hot spots' of fear and crime: a multi-method investigation. *Journal of environmental psychology*, 13(3), 187-206.
- Nasar, J. L., & Jones, K. M. (1997). Landscapes of fear and stress. *Environment and behavior*, 29(3), 291-323.
- Nathanson, C. A. (1974). Moving preferences and plans among urban black families. *Journal of the American Institute of Planners*, 40(5), 353-359.
- Neill, D. O., Rueda, R., & Savage, J. (2009). *Security Design for Sustainable Buildings and Campuses* (Fisrt ed.), Massachusetts: Applied Risk Management (ARM).
- Neuman, W. L., & Neuman, W. L. (2006). *Social research methods: Qualitative and quantitative approaches*.
- Newman, S. J., & Duncan, G. J. (1979). Residential problems, dissatisfaction, and mobility. *Journal of the American Planning Association*, 45(2), 154-166.
- Nenci, A. M., De Rosa, A. S., Testa, G., and Carrus, G, (2003). "Social and architectural legibility of the city", In G. Moser, E. Pol, Y. Bernard, M. Bonnes, J. A. Corraliza, & M. V. Giuliani (Eds.), *People, places and sustainability* (pp. 25–37). Go" ttingen, Germany: Hogrefe & Huber.

- Nielsen-Pincus, M., Goldberg, C. S., Pocewicz, A., Force, J. E., Waits, L. P., Morgan, P., & Vierling, L. (2010). Predicted effects of residential development on a northern Idaho landscape under alternative growth management and land protection policies. *Landscape and urban planning*, 94(3), 255-263.
- NRU (Neighbourhood Renewal Unit) (2002), NDC Elections: A Study in Community Engagement, London: The Stationary Office.
- Nunnally, J. C., Bernstein, I. H., & Berge, J. M. T. (1967). *Psychometric theory*(Vol. 226). New York: McGraw-Hill.
- Ohmer, M., & Beck, E. (2006). Citizen participation in neighborhood organizations in poor communities and its relationship to neighborhood and organizational collective efficacy. *J. Soc. & Soc. Welfare*, 33, 179.
- Oppenheim, A. N. (1992). *Questionnaire design, interviewing and attitude measurement*. Bloomsbury Publishing.
- Omuta, G. E. (1988). The quality of urban life and the perception of livability: A case study of neighbourhoods in Benin City, Nigeria. *Social Indicators Research*, 20(4), 417-440.
- Pallant, J. (2010). *SPSS survival manual: A step by step guide to data analysis using SPSS*. McGraw-Hill International.
- Park, Robert E., Ernest W. Burgess, Roderick D. McKenzie and Louis Wirth, (1925). "The City", Chicago, IL: University of Chicago Press.
- Patton, M. Q. (1990). *Qualitative evaluation and research methods*. SAGE Publications, inc.
- Painter, K. (1996). The influence of street lighting improvements on crime, fear and pedestrian street use, after dark. *Landscape and urban planning*, 35(2), 193-201.
- Pani, N. (2009). Resource cities across phases of globalization: Evidence from Bangalore. *Habitat International*, 33(1), 114-119.
- Petter, S., Straub, D., & Rai, A. (2007). Specifying formative constructs in information systems research. *Mis Quarterly*, 623-656.
- Peterson, R. A. (1994). A meta-analysis of Cronbach's coefficient alpha. *Journal of consumer research*, 381-391.

- Perkins, D. D., & Taylor, R. B. (2002). Ecological assessments of community disorder: Their relationship to fear of crime and theoretical implications. In *Ecological Research to Promote Social Change* (pp. 127-170). Springer US.
- Phang, S. Y. (2001). Housing policy, wealth formation and the Singapore economy. *Housing Studies*, *16*(4), 443-459.
- Piro, F. N., Næss, Ø., & Claussen, B. (2006). Physical activity among elderly people in a city population: the influence of neighbourhood level violence and self perceived safety. *Journal of Epidemiology and Community Health*, *60*(7), 626-632.
- Power, A., & Wilson, W. J. (2000). Social exclusion and the future of cities.
- Pooley, C. G., & Turnbull, J. (2005). Coping with congestion: responses to urban traffic problems in British cities c. 1920–1960. *Journal of historical geography*, *31*(1), 78-93.
- Proshansky, H. M., Fabian, A. K., & Kaminoff, R. (1983). Place-identity: Physical world socialization of the self. *Journal of environmental psychology*, *3*(1), 57-83.
- Prezza, M., Costantini, S., Chiarolanza, V., and Di Marco, S. (1999). “La scala italiana del senso di comunita”, [The Italian Sense of Community Scale]. *Psicologia della Salute*, *3-4*, 135-158.
- Prezza, M., Pilloni, S., Morabito, C., Sersante, C., Alparone, F. R., & Giuliani, M. V. (2001). The influence of psychosocial and environmental factors on children's independent mobility and relationship to peer frequentation. *Journal of Community & Applied Social Psychology*, *11*(6), 435-450.
- Proshansky, H. M. (1978). The city and self-identity. *Environment and behavior*, *10*(2), 147-169.
- Putnam, R. D., Leonardi, R., & Nanetti, R. Y. (1994). *Making democracy work: Civic traditions in modern Italy*. Princeton university press.
- Rainey, J. K., & Goh, M. C. (2004). An interactive triple-helical collagen builder. *Bioinformatics*, *20*(15), 2458-2459.
- Riger, S., LeBailly, R. K., & Gordon, M. T. (1981). Community ties and urbanites' fear of crime: An ecological investigation. *American Journal of Community Psychology*, *9*(6), 653-665.

- Ringel, N. B., & Finkelstein, J. C. (1991). Differentiating neighborhood satisfaction and neighborhood attachment among urban residents. *Basic and applied social psychology, 12*(2), 177-193.
- Ringle, C. M., Wende, S., & Will, A. (2005). SmartPLS–Version 2.0. *Universität Hamburg, Hamburg.*
- Rohm Young, D., & Voorhees, C. C. (2003). Personal, social, and environmental correlates of physical activity in urban African-American women. *American Journal of Preventive Medicine, 25*(3), 38-44.
- Rose, D., & Sullivan, O. (1993). *Introducing data analysis for social scientists*. Open University Press.
- Rosengren, K. E. (Ed.). (1981). *Advances in content analysis*. Beverly Hills, CA: Sage.
- Ross, C. E. (2000). Walking, exercising, and smoking: does neighborhood matter?. *Social science & medicine, 51*(2), 265-274.
- Ross, C. E., & Mirowsky, J. (2001). Neighborhood disadvantage, disorder, and health. *Journal of health and social behavior, 25*8-276.
- Rountree, P. W., & Land, K. C. (1996). Perceived risk versus fear of crime: Empirical evidence of conceptually distinct reactions in survey data. *Social forces, 74*(4), 1353-1376.
- Rogerson, P. A. (2010). *Statistical methods for geography: a student's guide*. Sage Publications.
- Rust, J., & Golombok, S. (1999). *Modern psychometrics: The science of psychological assessment*. Psychology Press.
- Russ-Eft, D, (1979). “Identifying components comprising neighbourhood quality of life”, *Social Indicators Research 6*, pp. 349–372.
- Saarinen, T. F, (1975). “Environmental Planning: Perception and Behaviour”, Boston: Houghton Mifflin.
- Saeidi, S., & Oktay, D. (2012). Diversity for Better Quality of Community Life: Evaluations in Famagusta Neighbourhoods. *Procedia-Social and Behavioral Sciences, 35*, 495-504.
- Sallis, J. F., Johnson, M. F., Calfas, K. J., Caparosa, S., & Nichols, J. F. (1997). Assessing perceived physical environmental variables that may influence physical activity. *Research quarterly for exercise and sport, 68*(4), 345-351.

- Sallis, J., Bauman, A., & Pratt, M. (1998). Environmental and policy interventions to promote physical activity. *American journal of preventive medicine*, 15(4), 379-397.
- Sampson, R. J., Raudenbush, S. W., & Earls, F. (1997). Neighborhoods and violent crime: A multilevel study of collective efficacy. *Science*, 277(5328), 918-924.
- Sarason, S. B. (1974). *The psychological sense of community: Prospects for a community psychology*. Jossey-Bass.
- Schuppe, M. (2008). *Coping with Growth in Tehran*. GRIN Verlag.
- Schalock, R. L. (2004). The concept of quality of life: what we know and do not know. *Journal of intellectual disability research*, 48(3), 203-216.
- Schneider, R. H., & Kitchen, T. (2002). *Planning for crime prevention: a transatlantic perspective*. New York: Routledge.
- Schneider, M. (1975). The quality of life in large American cities: Objective and subjective social indicators. *Social Indicators Research*, 1(4), 495-509.
- Schwarzer, R., & Renner, B. (2009). Health-specific self-efficacy scales. Available from: URL: [http://www. RalfSchwarzer. de](http://www.RalfSchwarzer.de).
- Sekaran, U. (2006). *Research methods for business: A skill building approach*. John Wiley & Sons.
- Shenassa, E. D., Liebhaber, A., & Ezeamama, A. (2006). Perceived safety of area of residence and exercise: a pan-European study. *American Journal of Epidemiology*, 163(11), 1012-1017.
- Shoval, N. (2008). Tracking technologies and urban analysis. *Cities*, 25(1), 21-28.
- Sirgy, M. J., & Cornwell, T. (2002). How neighborhood features affect quality of life. *Social Indicators Research*, 59(1), 79-114.
- Sirgy, M. J., & Cornwell, T. (2001). Further validation of the Sirgy et al.'s measure of community quality of life. *Social Indicators Research*, 56(2), 125-143.
- Sirgy, M. J., Rahtz, D. R., Cicic, M., & Underwood, R. (2000). A method for assessing residents' satisfaction with community-based services: a quality-of-life perspective. *Social Indicators Research*, 49(3), 279-316.
- Skogan, W. G., & Maxfield, M. G. (1981). *Coping with crime: Individual and neighborhood reactions* (p. 272). Beverly Hills: Sage Publications.
- Skogan, W. G. (1992). *Disorder and decline: Crime and the spiral of decay in American neighborhoods*. Univ of California Press.

- Smith, V. K. (1977). Residential location and environmental amenities: a review of the evidence. *Regional Studies*, *11*(1), 47-61.
- Smith, W. R., & Torstensson, M. (1997). Gender differences in risk perception and neutralizing fear of crime: Toward resolving the paradoxes. *British journal of criminology*, *37*(4), 608-634.
- Sooman, A., & Macintyre, S. (1995). Health and perceptions of the local environment in socially contrasting neighbourhoods in Glasgow. *Health & Place*, *1*(1), 15-26.
- Sopher, D. E. (1979). The landscape of home: myth, experience, social meaning. *The interpretation of ordinary landscapes*, 129-149.
- Spreiregen, P. D. (1965). *Urban design: the architecture of towns and cities*. New York: McGraw-Hill.
- Speare, A. (1974). Residential satisfaction as an intervening variable in residential mobility. *Demography*, *11*(2), 173-188.
- Stafford, M., Chandola, T., & Marmot, M. (2007). Association between fear of crime and mental health and physical functioning. *Journal Information*, *97*(11).
- Steptoe, A., & Feldman, P. J. (2001). Neighborhood problems as sources of chronic stress: development of a measure of neighborhood problems, and associations with socioeconomic status and health. *Annals of Behavioral Medicine*, *23*(3), 177-185.
- Stokols, D. (1996). Translating social ecological theory into guidelines for community health promotion. *American journal of health promotion*, *10*(4), 282-298.
- Stokols, D. (2000). Social ecology and behavioral medicine: Implications for training, practice, and policy. *Behavioral medicine*, *26*(3), 129-138.
- Stokols, D., Allen, J., & Bellingham, R. L. (1996). The social ecology of health promotion: implications for research and practice. *American Journal of Health Promotion*, *10*(4), 247-251.
- Strauss, A., & Corbin, J. M. (1990). *Basics of qualitative research: Grounded theory procedures and techniques*. Sage Publications, Inc.
- Staw, B. M., Bell, N. E., & Clausen, J. A. (1986). The dispositional approach to job attitudes: A lifetime longitudinal test. *Administrative Science Quarterly*, 56-77.

- Stoeckeler, H. S. (1977). AESTHETIC QUALITY OF HOME INTERIOR—A USEFUL INDICATOR FOR HOUSING SATISFACTION AND OTHER QUALITY OF LIFE MEASURES. *Journal of Interior Design*, 3(1), 53-73.
- Stoeckler, H. S., & Larntz, K. (1986). Cross-cultural differences in relationships among satisfaction with aesthetic quality of dwelling interior, overall housing, and quality of life. *Compendium of Quality of Life Research*, (Illinois Agricultural Experiment Station, Urbana, pp. 122–135).
- Sundeen, R. A., & Mathieu, J. T. (1976). The fear of crime and its consequences among elderly in three urban communities. *The Gerontologist*, 16(3), 211-219.
- Sundquist, J. L. (1975). Dispersing population: what America can learn from Europe.
- Suminski, R. R., Poston, W. S. C., Petosa, R. L., Stevens, E., & Katzenmoyer, L. M. (2005). Features of the neighborhood environment and walking by US adults. *American journal of preventive medicine*, 28(2), 149-155.
- Suttles, G. D., & Suttles, G. D. (1972). *The social construction of communities* (Vol. 111). Chicago: University of Chicago Press.
- Tabachnick, B. G., & Fidell, L. S. (2001). Using multivariate statistics.
- Tabachnick, B. G., & Fidell, L. S. (1989). Using multivariate statistics, 1989. *Harper Collins. Tuan, PD A comment from the viewpoint of time series analysis. Journal of Psychophysiology*, 3, 46-48.
- Taub, R. P., Taylor, D. G., & Dunham, J. D. (1981). Neighborhoods and safety. *Reactions to crime*, 103-119.
- Tan, T.H. (2010), “The effects of housing characteristics on neighborhood stability of homeownership”, *International Journal of Business and Emerging Market*, Vol. 2 No. 3, pp. 286-304.
- Tashakkori and Teddlie's (2010). *Handbook of mixed methods in the social and behavioral research* Thousand Oaks: Sage.
- Tesch, R. (1990). *Qualitative research: Analysis types and software tools*. Psychology Press.
- Teck-Hong, T. (2011). Neighborhood preferences of house buyers: the case of Klang Valley, Malaysia. *International Journal of Housing Markets and Analysis*, 4(1), 58-69.
- Temme, D., Kreis, H., & Hildebrandt, L. (2006). *PLS path modeling: A software review* (No. 2006, 084). SFB 649 discussion paper.

- Tenenhaus, M., Vinzi, V. E., Chatelin, Y. M., & Lauro, C. (2005). PLS path modeling. *Computational statistics & data analysis*, 48(1), 159-205.
- Tremblay Jr, K. R., Dillman, D. A., & Van Liere, K. D. (1980). An examination of the relationship between housing preferences and community-size preferences [Small towns and rural areas versus metropolitan areas]. *Rural Sociology*.
- Troped, P. J., Saunders, R. P., Pate, R. R., Reininger, B., & Addy, C. L. (2003). Correlates of recreational and transportation physical activity among adults in a New England community. *Preventive medicine*, 37(4), 304-310.
- Tuan, Y. F. (1990). *Topophilia: A study of environmental perception, attitudes, and values*. Columbia University Press.
- Tuan, Y. F. (1980). Rootedness versus sense of place. *Landscape*, 24(1), 3-8.
- Twigger-Ross, C. L., & Uzzell, D. L. (1996). Place and identity processes. *Journal of environmental psychology*, 16(3), 205-220.
- Uzzell, D., Pol, E., & Badenas, D. (2002). Place identification, social cohesion, and environmental sustainability. *Environment and Behavior*, 34(1), 26-53.
- Vagias, W. M. (2006). Likert-type scale response anchors. *Clemson International Institute for Tourism and Research Development*, 1.
- van Lenthe, F. J., Brug, J., & Mackenbach, J. P. (2005). Neighbourhood inequalities in physical inactivity: the role of neighbourhood attractiveness, proximity to local facilities and safety in the Netherlands. *Social science & medicine*, 60(4), 763-775.
- Vest, J., Valadez, A., (2005). "Perceptions of neighbourhood characteristics and leisure- time physical inactivity", Austin/Travis County, Texas, 2004. *Morb. Mort. Wkly. Reports* 54, 926-928.
- Vliet, W. V. (1981). Neighborhood evaluations by city and suburban children. *Journal of the American Planning Association*, 47(4), 458-466.
- Vincenzo, E. V., Wynne, W. C., Jörg, H., and Huiwen, W, (2010). "Handbook of Partial Least Squares; Concepts, Methods and Applications", Springer Heidelberg Dordrecht London New York, ISBN 978-3-540-32825-4, DOI 10.1007/978-3-540-32827-8.
- Vogt, W. P., & Johnson, R. B. (2011). *Dictionary of statistics & methodology: A nontechnical guide for the social sciences*. Sage.

- Voorhees, C. C., & Rohm Young, D. (2003). Personal, social, and physical environmental correlates of physical activity levels in urban Latinas. *American journal of preventive medicine*, 25(3), 61-68.
- Vrij, A., & Winkel, F. W. (1991). Characteristics of the built environment and fear of crime: A research note on interventions in unsafe locations.
- Vrbka, S. J., & Combs, E. R. (1993). PREDICTORS OF NEIGHBORHOOD AND COMMUNITY SATISFACTIONS IN RURAL. *Housing and Society*, 20(1).
- Walters, A. A. (1975). Noise and prices.
- Wandersman, A., & Florin, P. (2003). Community interventions and effective prevention. *American Psychologist*, 58(6-7), 441.
- Warr, P., Jackson, P., & Banks, M. (1988). Unemployment and mental health: Some British studies. *Journal of social issues*, 44(4), 47-68.
- Watson, D., & Clark, L. A. (1984). Negative affectivity: the disposition to experience aversive emotional states. *Psychological bulletin*, 96(3), 465.
- Wasserman, I. M., & Chua, L. A. (1980). Objective and subjective social indicators of the quality of life in American SMSA's: A reanalysis. *Social Indicators Research*, 8(3), 365-381.
- Weatherley, R., Siti Hajar, A. B., Noralina, O., John, M., Preusser, N., & Yong, M. (2012). Evaluation of a school-based sexual abuse prevention curriculum in Malaysia. *Children and Youth Services Review*, 34(1), 119-125.
- Weber, R. P. (Ed.). (1990). *Basic content analysis* (No. 49). Sage.
- Wendel-Vos, G. W., Schuit, A. J., De Niet, R., Boshuizen, H. C., Saris, W. H. M., & Kromhout, D. A. A. N. (2004). Factors of the physical environment associated with walking and bicycling. *Medicine and science in sports and exercise*, 36(4), 725-730.
- Weidemann, S., Anderson, J. R., Butterfield, D. I., & O'Donnell, P. M. (1982). Residents' Perceptions of Satisfaction and Safety A Basis for Change in Multifamily Housing. *Environment and Behavior*, 14(6), 695-724.
- Weidemann, S., Anderson, J. R., & Chenoweth, R. (1979). *Residents' Satisfaction in HUD-assisted Housing: Design and Management Factors: Prepared for the Office of Policy Development and Research, US Department of Housing and Urban Development*. The Office.

- Western, J. S., Weldon, P. D., & Haung, T. T. (1974). Housing and satisfaction with environment in Singapore. *Journal of the American Institute of Planners*, 40(3), 201-208.
- Weil, M. O., & Gamble, D. N. (1995). Community practice models. *Encyclopedia of social work*, 19, 577-594.
- Williams, A. (2003). How to... Write and analyse a questionnaire. *Journal of Orthodontics*, 30(3), 245-252.
- Wilcox, S., Bopp, M., Oberrecht, L., Kammermann, S. K., & McElmurray, C. T. (2003). Psychosocial and perceived environmental correlates of physical activity in rural and older African American and white women. *The Journals of Gerontology Series B: Psychological Sciences and Social Sciences*, 58(6), P329-P337.
- Wilbur, J., Chandler, P.J., Dancy, B., Lee, H., (2003b). "Correlates of physical activity in urban mid-western Latinas", *Am. J. Prev. Med.* 25, 69–76.
- Wilson, D. K., Kirtland, K. A., Ainsworth, B. E., & Addy, C. L. (2004). Socioeconomic status and perceptions of access and safety for physical activity. *Annals of Behavioral Medicine*, 28(1), 20-28.
- Wilson, J. Q., & Kelling, G. L. (1982). Broken windows. *Atlantic monthly*, 249(3), 29-38.
- Wilson, J. Q., & Kelling, G. L. (1982). Broken windows. *Atlantic monthly*, 249(3), 29-38.
- Wilbur, J., Chandler, P. J., Dancy, B., & Lee, H. (2003). Correlates of physical activity in urban Midwestern Latinas. *American journal of preventive medicine*, 25(3), 69-76.
- Wood, L., Shannon, T., Bulsara, M., Pikora, T., McCormack, G., & Giles-Corti, B. (2008). The anatomy of the safe and social suburb: an exploratory study of the built environment, social capital and residents' perceptions of safety. *Health & place*, 14(1), 15-31.
- Wolpert, J. (1966). Migration as an adjustment to environmental stress. *Journal of Social Issues*, 22(4), 92-102.
- Yin, R. K. (2014). *Case study research: Design and methods*. Sage publications.
- Yockey, K. M. (1976). *Residential alterations and additions and housing-neighborhood satisfaction* (Doctoral dissertation, Iowa State University).
- Yuen, B. (2004). Safety and dwelling in Singapore. *Cities*, 21(1), 19-28.

- Zainal, N. R., Kaur, G., Ahmad, N. A., & Khalili, J. M. (2012). Housing Conditions and Quality of Life of the Urban Poor in Malaysia. *Procedia-Social and behavioral Sciences*, 50, 827-838.
- Zehner, R. B. (1971). Neighborhood and community satisfaction in new towns and less planned suburbs. *Journal of the American Institute of Planners*, 37(6), 379-385.
- Zelinka, A., & Brennan, D. (2001). *SafeScape. Creating Safer, More Livable Communities through Planning and Design*.
- Zilbershtein, G. (2009). *Architecture in the era of terror: Design and perception of security in two societies* (Doctoral dissertation, Texas A&M University).
- Zikmund, W., Babin, B., Carr, J., & Griffin, M. (2012). *Business research methods*. Cengage Learning.