

# DEVELOPMENT AND PERFORMANCE EVALUATION OF A PROTOTYPE ELECTRIC HYBRID POWERTRAIN SYSTEM FOR AUTOMOTIVE APPLICATIONS

Azhar Abdul Aziz and Lim Chon Wei

Automotive Development Centre (ADC), Faculty of Mechanical Engineering,  
Universiti Teknologi Malaysia, 81310 Skudai, Johor

## ABSTRAK

Researchers at Universiti Teknologi Malaysia (UTM) have developed a dedicated hybrid power plant based on the parallel configuration using a gasoline engine coupled to a high performance electric motor, specifically targeted for automotive application. The aims are to achieve even lower exhaust emissions, better fuel economy and better performance than the conventional arrangement, demonstrating an alternative solution to the conventional power plant. The engine used is a 1.3 litre spark-ignition, coupled with a 27.5 kW Nexus electric motor. The control strategy developed in conjunction with the program is to use the electric drive motor for initial acceleration and for regeneration braking energy recovery, and for reducing the peak load and transients seen by the engine. A relatively small pack of advanced lead acid batteries is used for energy storage. The design, development and evaluation exercises are fully described giving a comprehensive insight of the prototype and its capabilities.

**Keywords :** Automotive, parallel, electric motor, batteries, hybrid

## NOMENCLATURE

$P_{road}$	Road power demand, kW
$P_{roll}$	Power to overcome rolling resistance, kW
$P_{hill}$	Power required for hill climbing, kW
$P_{aero}$	Power to overcome aerodynamic drag, kW
$P_{accel}$	Power for acceleration, kW
$m$	Mass, kg
$g$	Gravitational constant, 9.81 m/s <sup>2</sup>
$V$	Velocity, m/s
$C_r$	Rolling resistance coefficient
$C_d$	Aerodynamic drag coefficient
$\rho$	Density of air, kg/m <sup>3</sup>
$A$	Frontal area of vehicle, m <sup>2</sup>
ICE	Internal Combustion Engine
SOC	State of Charge
HEV	Hybrid Electric Vehicle

## INTRODUCTION

Today's motorised vehicles can be improved from the perspective of fuel economy and emission. While the major auto manufacturers invest huge sums to perfect the fuel cell technology, electric hybrid system – a conventional internal combustion engine boosted by an electric motor – looks the more likely to be the interim technology, before fuel cell can be the ideal replacement of the low efficiency internal combustion engines.

Hybrid systems are essentially tandem energy sources. Hybrids offer major advantages - they can provide the best of both performance and fuel economy in the same package and able to capture energy usually lost in braking and recover it as electric energy. All these looks promising provided the systems be reasonably priced. Hybrid configurations are generally more complex in design compared to vehicles with conventional

powertrains. They contain various extra components and the interaction and energy flows between components, as well as their management is more complex. Despite this, it offers certain design flexibility as powertrain components can be placed in different parts of the vehicle where practical.

In a hybrid system, the internal combustion engine (ICE) can operate at a constant speed to charge the engine alternator and generate power for the electric traction motors - a series approach. Likewise, it can be linked directly to the drive train and propel the vehicle in parallel using electric motors – a parallel system. A group of researchers from UTM has undertaken to develop a prototype electric hybrid power plant in the first of the many phases of the development program, from design to prototyping, dedicated for automotive application.

## DESIGN OBJECTIVES

The aims of building the electric hybrid power plant are:

1. Component integration and design
2. Control algorithm
3. System architecture development

The unforeseeable objective is the establishment of the learning curve in developing such technology on a low cost research budget.

## PARALLEL VERSUS SERIES

In initiating such a broad base R&D project, the choice of either series or parallel configuration must be seriously given due consideration.

Series Hybrids: Most beneficial in city driving conditions, since electric motors, which operate efficiently through a wide range of conditions, propel the vehicle. The IC engine can run at a constant speed to operate the

alternator, while regenerative braking captures braking efficiency energy normally lost to help charge the batteries. The engine of series hybrid is uncoupled from the road load and runs in either a fixed or a restricted range of operating points. The engine-generator set generally supplies the average demanded power, while an energy storage device (mostly batteries) supplies peak power.

**Parallel Hybrids:** Most efficient at highway speeds, since the IC engine is directly connected to the drive wheels and an electric motor can augment the IC engine during launches and acceleration. Regenerative braking and surplus power from the engine keep the batteries charged. The two power sources may contribute torque separately or in combination with each other. This offer design flexibility of the components placement.

The parallel hybrid electric configuration is the choice for two main reasons. First, a hybrid vehicle yields the most acceptable combination of the low emissions and high-energy economy achieved by electric vehicles with the superior range and performance of an IC engine vehicle [1]. Second, an extremely high efficiency IC engine was available to the team with a peak power of 54 kW (86 hp). These traits allow parallel hybrid to perform well in high load, high average power conditions. This is the choice of many interested parties and is well demonstrated by a group of engineering students (univ. of Wisconsin, US) who is an active participant in the annual Future Truck competition [2].

## DESIGN OF HYBRID ELECTRIC VEHICLE

A hybrid electric vehicle (HEV) has two sources of on-board power. The integration of these power-producing components with the electrical energy storage components allows for many different types of HEV designs. The flexibility in the design comes from the ability of the control strategy to manage how much power is flowing to or from each component. This way, the components are match with the control strategy to achieve the optimal design for a given set of design constraints. There are many, often conflicting objectives desirable for HEVs. The primary ones being:

- maximise fuel economy
- minimise emissions
- minimise propulsion system to keep cost affordable
- do all the above while maintaining or improving upon acceptable performance (acceleration, range, noise etc.)

To achieve these objectives, both the hardware configuration and the power control strategy are integrated as a package. The hardware configuration dictates to some extent what control strategies make sense, although there is a wide spectrum of control strategies for each hardware configuration. As described earlier, a parallel hybrid configuration was selected based on the project requirements and literature studies. The series layout was not given consideration because of its low overall power conversion efficiency [2]. It is required to convert the mechanical energy of engine to electrical energy at the generator, and finally to mechanical energy at the motor.

In the parallel configuration, the engine and electric motor are parallel to one another, with their shafts coupled by a torque coupler so that the combined torque can be

absorb by the dynamometer (Figure 1). The torque coupler consists of, one-way clutch, electro-magnetic clutch and belt drive. With a one-way clutch on the engine shaft output, the electric motor can directed motive power to the dynamometer without driving the engine. Further, by decoupling the electro-magnetic clutch on the motor shaft, the engine can run independently as prime mover. The one-way clutch and electro-magnetic clutch transition the parallel hybrid powertrain from one mode of operation to another.

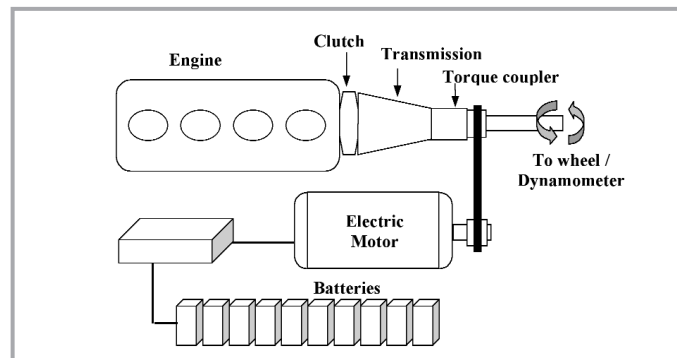


Figure 1: The parallel power plant configuration

## VEHICLE ENERGY ANALYSIS

The Road power demand equation represents the energy consumption of a vehicle over a period. This equation defines how power is use in a vehicle as it travels down the road. It is the principle behind the vehicle simulation and all the components and modifications integrated into the vehicle. Equation 1 describes the road power demand in details.

$$P_{\text{road}} = P_{\text{roll}} + P_{\text{hill}} + P_{\text{aero}} + P_{\text{accel}} + P_{\text{aux}} \quad (1)$$

It encompasses all of the vehicle design aspects that UTM-HEV team could vary to improve the overall economy. The relative importance of reducing the different parameters of the equation is shown in Figure 2.

In order to increase the fuel economy of the vehicle the road power demand must be decreased, which is accomplish by reducing the power demands that make up the road power.

The power to overcome rolling resistance is equal to the product of the vehicle mass, gravity, velocity, coefficient of rolling resistance, and the cosine angle that the road makes with

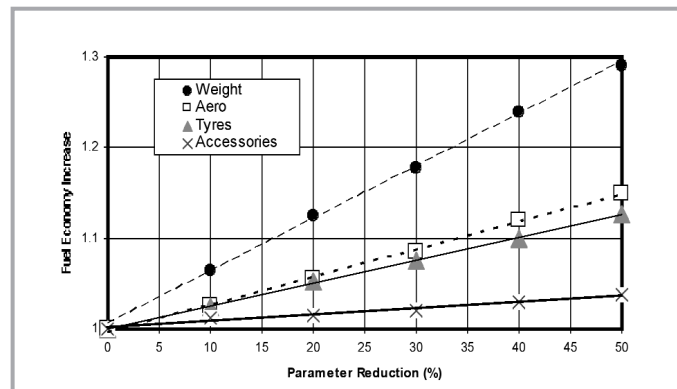


Figure 2: Parameter reduction to increase fuel economy [3]

level ground. Equation 2 describes this fact in details.

$$P_{\text{roll}} = mg VC_r \cos\theta \quad (2)$$

This power loss is reduced by aggressively pursuing weight reduction in the vehicle through numerous means. Selecting tyres with a very low rolling resistance will also prove the system performance.

The second portion of road power demand is the power required to climb hills. The value for the hill power loss is determined using Equation 3.

$$P_{\text{hill}} = mgV\sin\theta \quad (3)$$

Mass is the only portion of this equation that can be changed in the design.

The third power loss is due to aerodynamic drag. Shown as Equation 4, aerodynamic drag power loss is dependent on the air density, front area profile, velocity, and the coefficient of aerodynamic drag.

$$P_{\text{aero}} = 0.5 \rho AV^3 C_d \quad (4)$$

In the above equation, the front area profile and drag coefficient are the only changeable parameters.

Equation 5 is the power consumption caused by acceleration.

$$P_{\text{accel}} = d/dt E_{\text{kinetic}} = m V dV/dt \quad (5)$$

Again, mass reduction appears as a key to energy economy, but neither the velocity nor the change in velocity (with respect to time) are altered in the design.

The final portion of the road power demanded is the energy drawn by the auxiliary functions. This power consumption is reduced in the Perodua Rusa van by employing a smaller localised air conditioning system. Equations to quantify auxiliary power are more complex than this discussion warrants and have been omitted.

## COMPUTER MODEL

A parallel hybrid drive train was conceptualised, simulated, fabricated, and assembled at the Automotive Development Centre (ADC), in UTM. All parts used were off-the-shelf, except for the control system, which was custom designed and fabricated.

Prior to developing the hardware, a rigorous computer model of the drive train was developed using the ADVISOR, a hybrid modeling and simulation software produced by NREL (National Renewable Energy Laboratory). For reasons of brevity, the mathematical model derivation of the drive train is omitted. ADVISOR is a Matlab/Simulink based simulation analysis tool.

The developed computer model is of the forward-looking type, with a driver sending commands to the drive train controller based on vehicle speed deviation from the desired driving schedule.

## DRIVETRAIN SIMULATION

The parallel electric hybrid power plant combines an IC engine and an electric motor, drawing energy from gasoline fuel and batteries. Prediction of how the changing one aspect of the drive train will interact and affect the performance of

the other systems becomes very difficult, especially under varying driving conditions. An effective control strategy must balance several design tradeoffs that each plays a role in the overall efficiency of the vehicle. The team needed an inexpensive but a fast method to make sound engineering decisions regarding what components to use and how to tune them once installed in the vehicle. For this reason, the research team developed the system using the computer simulation approach, i.e. the dynamic simulation program, i.e. the dynamic simulation program SIMULINK.

## CONTROL STRATEGY

The team has also developed a hybrid control strategy capable of regulating state of charge (SOC) and load leveling. A SOC regulating strategy will monitor the battery voltage level and maintain the voltage within a prescribed range, neither full nor empty. Transient emissions caused by the changes in the engine load, was over come by the use of the electric motor. The gradual increase in engine power output is up set by the motor output. Buffering the engine from the road in this manner also increases the vehicle fuel economy. Keeping the average engine load within the permissible limits controls steady state emission concentrations.

The control system (refer Figure 3) was developed as a machine with four conditional states. Upon assigning the control strategy as a finite state machine, the software is restricted to run in a sequence of one state at a time. Since the current vehicle state can always be determined, each state can be tested, debugged, and tuned separately. Each of the states is reviewed in the following sections.

### STATE 1: ENGINE ONLY

The first state is engine only mode. In this state, the vehicle operates as if the electrical system were not present. All pedal commands go directly to the engine and the motor provides no load leveling assistance. This state is use during vehicle forward driving, high speed coasting, and battery recharging operation. When conditions dictate for high voltage requirements, the state ceases to operate. The state is not for reverse driving.

### STATE 2: ELECTRIC ONLY

The second state is electric only mode. In this state, the vehicle operates as pure electric vehicle. All pedal commands go to the electric motor through motor speed controller. This state is use during low speed operation or city driving and reverses driving within the sufficient SOC of the battery. When the battery SOC drops to low level, the state will automatically change to Hybrid state.

### STATE 3: REGENERATIVE BRAKING

The third state is the regenerative braking system state. Regenerative braking is the act of using the mechanical energy from the wheels to drive the motor, generating electricity for storage in the battery. This process recharges the battery while decreasing the vehicle speed.

The vehicle goes into the regenerative braking state only if the brake pedal is depressed and the high voltage system has room to store energy. All regenerative braking commands are passed through a set of filters. The first filter reduces the regenerative motor commands at low velocities to avoid "chatter" present at

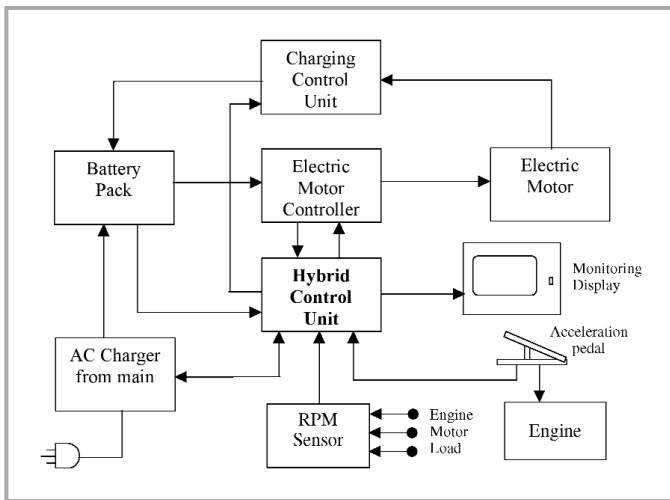


Figure 3: Schematic diagram of the control system

low motor speeds. The second filter reduces regenerative commands as the SOC approaches dangerously high levels.

#### STATE 4: HYBRID

HYBRID state is the fourth and most common state of the control strategy. It contains the SOC regulator control code, that manages the battery voltage as previously described. The range within the high and low bounds of the SOC regulator is called the SOC dead-zone. The dead-zone, set approximately between 50 to 60% SOC, adjusts for the best efficiency during battery charging and discharging. While in the HEV state, the control system will make use of both the engine and the motor conditions to meet the driver's demands.

### COMPONENTS IDENTIFICATION AND SELECTION

With the overall parallel powertrain chosen and the road load energy analysed, it was time to select the major components so that the complete drivetrain could be developed. Firstly, the two power sources must be determined. The team had selected the gasoline engine as the prime mover, while the electric motor as mover to augment the engine.

#### ENGINE

The engine is to provide the average power needed for all operating conditions. A Daihatsu gasoline 1.3 litre engine is used for the hybrid system design. The engine has sufficient power to maintain a highway cruising mode of 110 km/hr.

#### ELECTRIC MOTOR

One of the most critical components of a HEV is the electric motor. The selection was due to its efficiency, performance, functionality and size. DC motors are typically easier to

Table 1: Engine specifications

Type	Petrol engine, in-line, 4-cylinder, 4-cycle, 16 valve, SOHC
Displacement	1296 cc
Compression ratio	9.5:1
Max. output	54 kW/6000 rpm
Max. torque	101 Nm/3200 rpm

control, thus their controllers tend to be less expensive [4]. The Nexus brushed DC motor was the choice. It was originally developed as part of the hybrid electric-diesel bus drive system in the UK. The motor has a rated power of 27.5 kW (at 160 VDC, 60 minutes rating) and a peak torque of 180 Nm (at 55 kW). The speed range of the motor is up to 7000 rpm having a bulk mass of 80 kg and input voltage ranging from 24 to 160 V respectively.

With the power sources selected, the remaining components selection can now be made and the overall layout finalised. The parallel electric hybrid powertrain layout is shown in Figure 4. The components shown in this figure are described in the following paragraph.

#### A. ENGINE

The engine selected was a four cylinder, in-line, 53 kW, gasoline type. The engine and its accessories are supported by a custom-made frame.

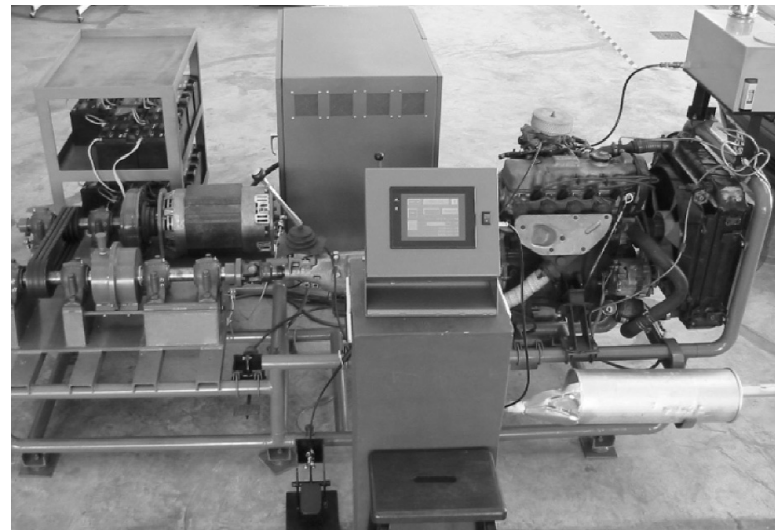


Figure 4: Photograph of the parallel hybrid power plant

#### B. ELECTRIC MOTOR

Nexus brushed DC motor with rated power of 27.5 kW and maximum torque of 180 Nm.

#### C. BATTERY PACK

Electrochemical batteries are the most commonly used devices in hybrid vehicles. Due to cost constraint and availability, Hawker Genesis advanced lead-acid battery was selected, with specification of 12 Volt and 42 Ah respectively. The batteries are arranged in series to supply power to the electric motor.

#### D. TRANSMISSION

A 5-speed manual transmission was used in the laboratory evaluation of the parallel hybrid arrangement.

#### E. CONTROL UNIT

The control unit built up of motor controller, speed encoder, switches, safety devices, and power electronic components. The heart of the hybrid control is the Siemens programmable logic controller (PLC), which integrates all components involved.



**F. BELT DRIVE**

The two parallel shafts were coupled by belt drive assembly and were supported by bearings. The structure of the platform enables drivetrain offset and adjustment to the tensioning of the drive belt be made.

**G. ONE-WAY CLUTCH**

In order to allow electric motor to operate without driving the engine, a one-way clutch or overrunning clutch is needed. This enables the engine to be isolated when it is not required, and to start and rotate up to the motor speed when its torque is needed to execute certain portion of the drive cycle. The Means One-way clutch which suitable for high rotational speed and torque for automotive transmission purpose is selected (refer to Figure 5.a).

**H. ELECTRO-MAGNETIC CLUTCH**

In engine mode operation, electric motor is disconnected from the main drive shaft. A high speed and high torque electro-magnetic clutch is needed for this application. Warner Electric clutch with static torque of 350 Nm and maximum running speed of 3600 rpm was selected (refer to Figure 5.b).

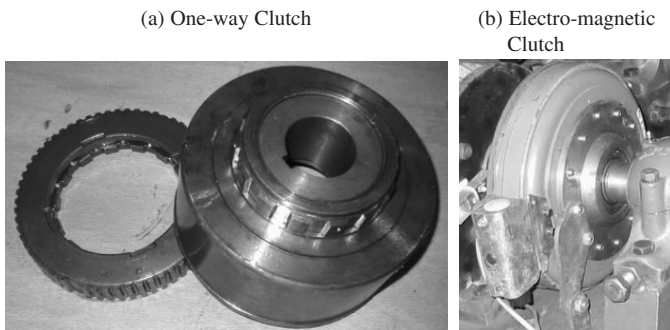


Figure 5: Photographs of the clutches

**I. FLEXIBLE COUPLING**

Flexible coupling protect against misalignment that may damage the components.

**J. ACCELERATION PEDAL**

The acceleration pedal was a combination design specially to throttle the engine and control the electric motor speed.

**K. TOUCH SCREEN**

The touch screen facilitate display, monitor and control. It serves as a user-friendly way for control parameter input. Omron touch pad was selected. Figure 6 shows several views of touch screen display windows. When the system is switch on, the screen display three operation modes for selection (Figure 6.a). By touching the desire box on the screen will select the mode for driving. Each operation modes (Figure 6.b, c and d) display driving command (forward, reverse, and stop), electro-magnetic clutch status ("CLT ON" for clutch engage, "CLT OFF" for clutch disengage), button to start engine (ICE), battery SOC and rotational speed displays. Operator can also set parameter input (Figure 6.e) and monitor the working time of various components (Figure 6.f).

**SEQUENCE OF OPERATION**

The operation of hybrid electric vehicle is meant for maximising fuel economy and reducing emission that makes use the advantages of both power sources. Therefore, three modes of operation are specified. They are (i) Engine mode, (ii) Electric mode and (iii) Hybrid mode. The selection of mode depend on the driving requirement and available of battery charge. The battery level is measure in state of charge (SOC). When the battery is full, SOC indicates 100% and when the battery is empty, SOC indicates zero. The control system will monitor the SOC within the range of 40% to 100%. The three-operational mode control strategy is shown in Figure 7 and 8.

For high SOC, the vehicle operates as electric vehicle at low speed. When power requirement is above electric motor capability, engine will take over the driving task in hybrid mode. During high speed, the vehicle operates as conventional vehicle. Battery charging is possible. If hard acceleration or high power is needed exceeding engine capability, electric motor will assist in hybrid mode.

For low SOC, certainly the vehicle operates in engine mode and charges the battery whenever have excessive power.

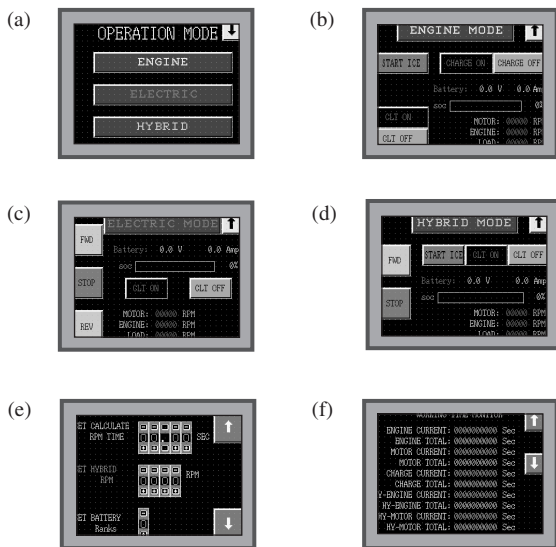


Figure 6: The displays of touch screen

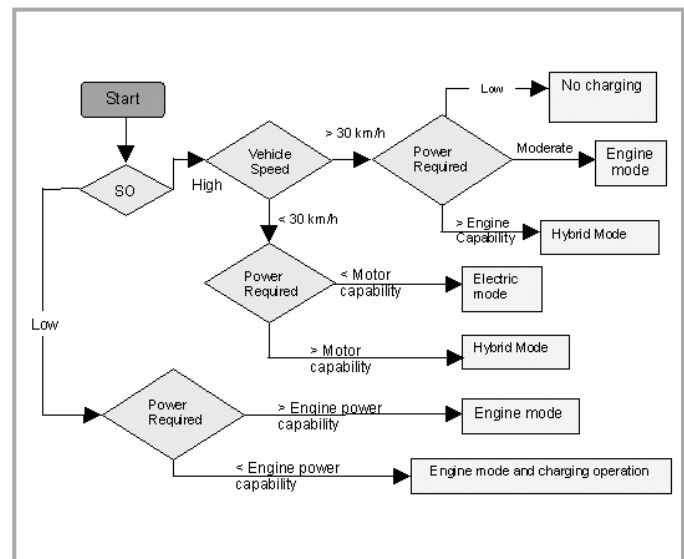


Figure 7: Flow chart of control strategy

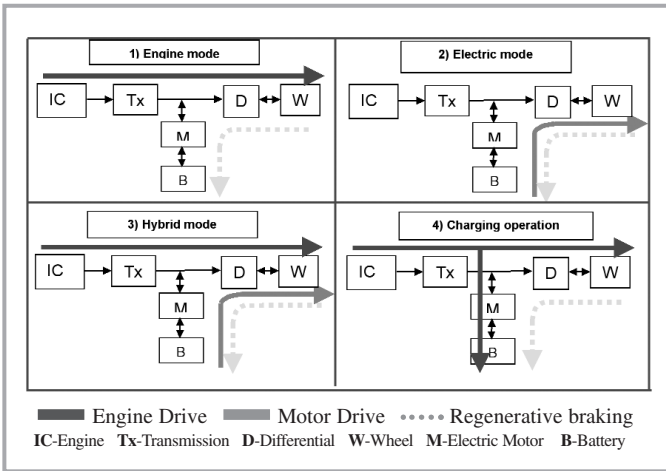


Figure 8: Power flow of multi-mode control strategy

**ENGINE MODE**

This mode is for highway driving and when the battery SOC is low. ICE provides power for forward driving requirement. The vehicle will function as conventional vehicle except for reversing, where the electric power is opt. Extra power of the engine is used to charge the battery until reaching high SOC. While charging, the electro-magnetic clutch will be engaged.

**ELECTRIC MODE**

This mode is for urban driving and when the battery SOC is high. The vehicle will be completely driven by the electric powered motor. The electro-magnetic clutch will be engaged. It is only intended for short driving range, which is restricted by the battery capacity.

**HYBRID MODE**

Hybrid mode is the most common mode during driving. In this mode, the electric motor is to accelerate the vehicle from rest to a speed of 30 km/h. Once reaching the speed, the engine is activated to provide motive power. The engine can adequately provide power up to 100 km/h and climbing at 5% gradient. During high acceleration and load, the motor will assist the engine in meeting the power demand. The vehicle drives in reverse when it is in the electric mode.

Regenerative braking will be present in all the modes to salvage the recovered energy and stored in the battery.

**PERFORMANCE EVALUATION**

Two driving cycles were used to predict the power plant performance and emission results, as shown in Figure 9. The Urban Dynamometer Driving Schedule (UDDS) was used for city test and represents city driving condition [5]. The Highway Fuel Economy Test (HWFET) on the other hand, is used to simulate highway driving. Currently it is used by the US EPA for Corporate Average Fuel Economy (CAFE) certification of passenger vehicles in the United States.

**RESULTS AND DISCUSSION**

The performances of the batteries, motor and engine (in conjunction with the UDDS driving cycle, in hybrid mode) are shown in Figure 10. The type of control strategy used is "parallel electric assist" [6]. Here the motor is to provide additional power when needed by the vehicle and to maintain the state of charge (SOC). By observing the battery

performance, the SOC is opted, and maintain above 60%. The initial battery SOC is 70%. Through out the driving cycle, the engine is the sole source power. It provides the average driving power to the vehicle while the motor is to augment the engine. As seen in the chart of motor power, the electric motor provides motive power during starting. Negative torque is noticeable in the motor during deceleration. At this stage, motor acts as a generator to recover kinetic energy, which is used to charge the battery. As a whole, the simulated Parallel HEV is strictly in the path the driving cycle.

Figure 11 shows comparison of the simulation results of conventional vehicle and parallel Hybrid Electric Vehicle

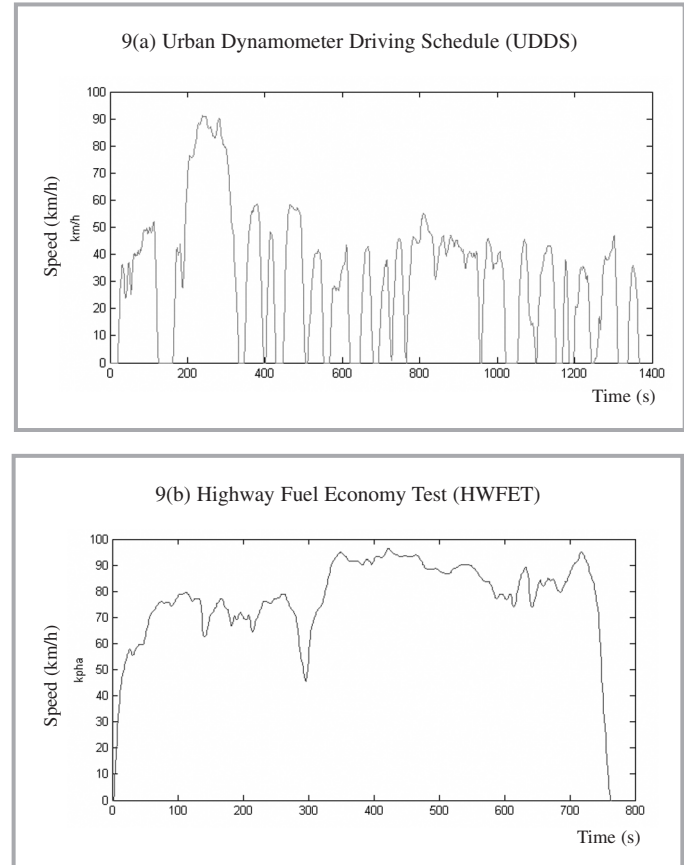


Figure 9: Driving cycle for power plant evaluation

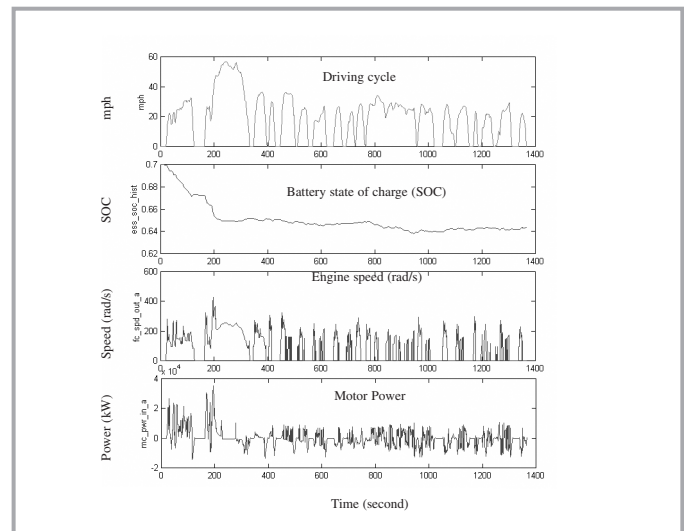


Figure 10: Simulation result of UDDS cycle

(HEV). Results indicate parallel HEV obtained fuel economy of 28.6 mpg as compared to 24.6 mpg of conventional power plant on the same platform running on the driving cycle of UDDS. HEV also achieved better acceleration performance. However, the gradeability at 55 mph is lower than conventional vehicle because hybrid vehicle carries extra weight of batteries and electric motor. Gradeability refers to the maximum grade the vehicle is able to maintain at 55 mph for 10 seconds. It is based on the requirement of PNGV (Partnership for a New Generation of Vehicle) associate with fuel economy and emission.

Table 2 summarises the emission concentration produced in UDDS cycle. Here the total emission concentration was

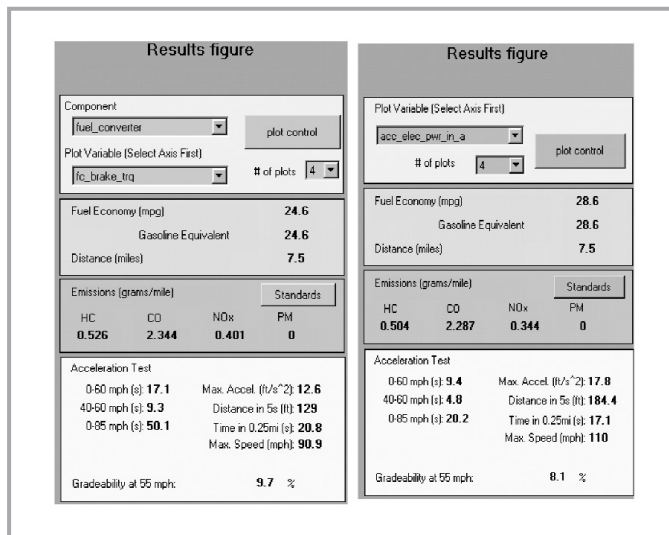


Figure 11: Results of conventional vehicle and hybrid electric vehicle

reduced drastically. Both the UDDS and HWFET test cycles depict promising results from the emission perspective. Same vehicle parameters were used which is the Perodua Rusa van with coefficient of drag 0.5, coefficient of rolling resistant 0.015 and frontal area of 2.221 m<sup>2</sup>. Both used the 54 kW engine. Figure 12 illustrates the results. High emission can only be seen in the beginning of the cycle. Hybrid operation in electric mode assists in keeping the emission level to the minimum.

Table 2: Emission levels

Regulated Emission	Emission Levels (gram/mile)
Hydrocarbon (HC)	0.504
Carbon Monoxide (CO)	2.207
NOx	0.344
Particle Material (PM)	0

## CONCLUSIONS

A parallel hybrid power train system based on the combination of an internal combustion engine and a dedicated electric motor was successfully developed and evaluated. The hybrid control strategy is to use the electric motor for initial acceleration, for battery charging and regenerative braking energy recovery, and to assist the engine when it's not operate effectively. This has been well developed and demonstrated to be feasible. From the

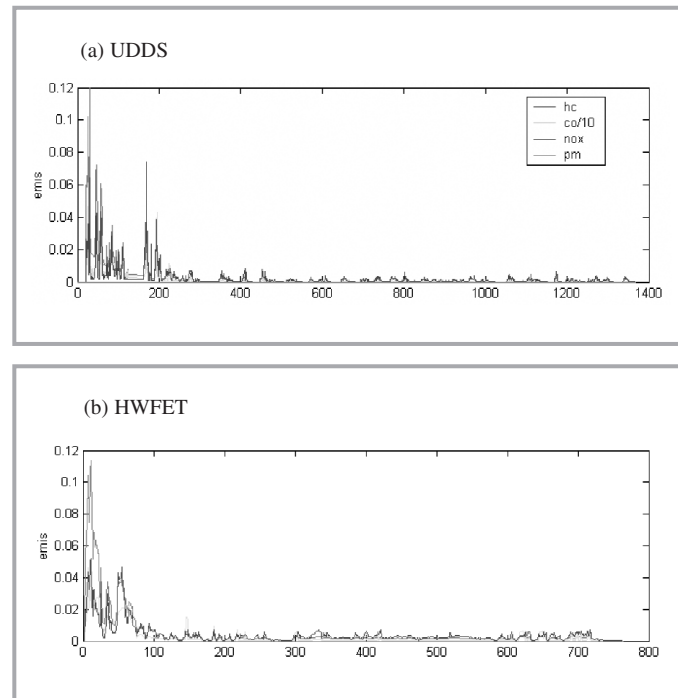


Figure 12: Emission charts

aspects of performance, the system has demonstrated its potential to minimise emission and fuel economy.

The completion of parallel electric hybrid prototype has brought many challenges and new ideas for improvement. In the second phase of the project, it will focus on the refinement of the complete system to render it having higher power-to-weight, smooth switching modes and power-to-volume ratios, suitable for fitting onto a platform (reference vehicle) for field trial evaluations.

## ACKNOWLEDGEMENTS

The IRPA's advisory committee at MOSTI (Malaysia's Ministry of science, technology and Innovation) approved the research grant for the project in the year 2000. The cooperation and encouragement by all parties in ensuring the success of the project implementation are gratefully acknowledged. ■

## REFERENCES

- [1] Y. Gao, L. Chen, and M. Ehsani, "Investigation of the Effectiveness of Regenerative Braking for EV and HEV", SAE Paper 1999-01-2910, 1999.
- [2] P.E. Ross, "Start Your Motors!", Feature Article, IEEE Spectrum, Oct. 2003.
- [3] A.D. Vyas, H.K. Ng, D.J. Santini, and J.L. Anderson, "Electric and Hybrid Electric Vehicle: A Technology Assessment Based on a Two-Stage Delphi Study", Argonne National Laboratory Report ANL/ESD-36, Argonne, IL, 1997.
- [4] N.M. LeBlanc, M. Douba, S. Quong, R.P. Larsen, M. Stithim, and W. Rimkus, "Technical Analysis of the 1994 HEV Challenge", SAE Paper 950176, 1995.

- [5] S. Sluder, M. Duoba, and R. Larson, "Evaluation of High Energy Efficiency Powertrain Approaches. The 1996 Future Car Challenge", SAE SP 1234, 1997.
- [6] National Renewable Energy Laboratory, ADVISOR homepage, <http://www.ctts.nrel.gov/analysis/>
- [7] B.K. Powell, K.E. Bailey, and S.R. Cikanek, "Dynamic Modelling and Control of Hybrid Electric Vehicle Powertrain System", IEEE Control System, October 1998, pp 17-33, Oct. 1998.
- [8] J.S. Burn, N.D. Lamar, M.O. Dimick, and S.J. Granger, "Development of the L3: An Efficient, High-power, Clean Fueled, Parallel Format, Hybrid Vehicle", SAE Paper 2000-01-3097, 2000.
- [9] R. Dimitrios, J. Burl, and J. Beard, "Control Strategies for a Series-Parallel Hybrid Electric Vehicle", SAE Paper 2001-01-1354, 2001.
- [10] A. Abdul Aziz, L. C. Wei, and K. B. Tawi, "A Dedicated Parallel Hybrid Automotive Power Plant for a Small Utility Vehicle", 6th Asia-Pacific International Symposium on Combustion and Energy Utilization (APISCEU), Kuala Lumpur, 2002.

## INFORMATION

# THE JOURNAL OF THE INSTITUTION OF ENGINEERS, MALAYSIA

### AIMS OF IEM JOURNAL

The Journal is intended to be a forum for a publication and discussion of current practice and future developments in all engineering disciplines.

Practical papers are particularly sought in which examples of good present practice can be described and disseminated for the benefit of professional engineers in industry. The propose is to encourage the widest possible readership and to keep the audience fully informed of the latest developments and practices, both in Malaysia and throughout the world.

Papers of high technical merit relying on mathematical arguments and computation will be considered but author are urged to relegate as far as possible the details of analysis to an appendix. The aim is to convey the

essential arguments and conclusions, and their relevance to present problems as simply as possible in the main text so that the paper is understandable to the widest possible audience of professional engineers.

To maintain the standard of the paper, a system of specialist refereeing is employed. Referees are asked to be particularly concerned with the clarity and depth of treatment as well as the particularly and topicality of the subject.

The editors endeavour to balance practice and theory as far as contribution allow so that the Journal is suited to the needs of practicing engineers as well as those in teaching and research.

### TASK OF THE REFEREES

The main object of the refereeing procedure is to protect the reputation of the journal by excluding any material which is not original or significant or which is not sufficiently concise or well presented. A referee need not concern himself if with minor editorial matters.

While a referee is obviously expected to draw attention to obvious errors, he should not criticize a paper adversely merely because he does not agree with all its ideas, or because he does not favour the methods or procedures

that it advocates. He should try to recognise real merit, even in a paper, which to him personally is uninteresting or unattractive.

Referees are asked not to mark the manuscript of the paper in any way, except that, if really necessary, small marginal asterisks, or numerals, for across-reference to the referee's report, may be lightly inserted in pencil. If a reference decides to refer a paper to a colleague to reinforce his opinion, this must be done under confidential cover.

### PRESENTATION

Referees are asked to consider whether the author presents his material logically, in clear and direct English and in as concise a manner as possible. Referees are asked to consider most carefully whether any paper can be

shortened, and to give instructions as to how any length reduction can be achieved.

### MATHEMATICS

Referees are asked to consider whether all the mathematics is essential or which parts can be deleted or relegated to an Appendix.

### ILLUSTRATIONS

Experimental result can often be displayed more effectively by means of graphs than by tabulation, but, when a graph shows merely a simple mathematical law, it should be omitted and the author should be asked to

present the facts in word or symbols. If the paper included tables and graphs (or other diagrams) presenting the same data, this should be pointed out by the referee. Detailed engineering drawings or wiring diagrams are preferable.

### REFERENCES

Referees are asked to consider whether the references are adequate. If important recent references have been omitted it will help if the referee would

indicate where these might found. If references are quoted which might difficult to locate, the referee is asked to consider whether these are necessary.

### ABSTRACT

The abstract is an essential part of the paper. It should be as concise as possible, and should comprise a brief and factual summary of the contents and conclusions of the paper, refer to any new information that it may contain, and

given an indication of its relevance. It should be intelligible in itself without reference to the paper.





Vol. 66, No. 1, March 2005  
KDN PP5476/7/2005 ISSN 0126-513X

**MAJLIS BAGI SESI 2005/2006 (IEM COUNCIL SESSION 2005/2006)**

**YANG DIPERTUA / PRESIDENT:**

Ir. Prof. Dr Ow Chee Sheng

**TIMBALAN YANG DIPERTUA / DEPUTY PRESIDENT:**

Y. Bhg. Dato' Paduka Ir. Keizrul bin Abdullah

**NAIB YANG DIPERTUA / VICE PRESIDENTS:**

Ir. Choo Kok Beng, Ir. Neoh Cheng Aik, Ir. Prof. Ishak bin Abdul Rahman, Ir. Prof. Dr Chuah Hean Teik, Ir. Prof. Dr Ruslan bin Hassan, Y. Bhg. Dato' Ir. Hj Abdul Rashid bin Maidin, Ir. Tan Yean Chin

**SETIAUSAHA KEHORMAT / HONORARY SECRETARY:**

Ir. M.C. Hee

**BENDAHARI KEHORMAT / HONORARY TREASURER:**

Ir. Lee Weng Onn

**WAKIL STRUKTUR / STRUCTURAL REPRESENTATIVE:**

Ir. Jeffrey Chiang Choong Luin

**WAKIL AWAM / CIVIL REPRESENTATIVE:**

Ir. Aik Siaw Kong

**WAKIL ELEKTRIK / ELECTRICAL REPRESENTATIVE:**

Ir. Mah Soo

**WAKIL MEKANIK / MECHANICAL REPRESENTATIVE:**

Ir. Gopal Narian Kutty

**WAKIL KIMIA & DISIPLIN LAIN / CHEMICAL & OTHERS REPRESENTATIVE:**

Ir. Ahmad Nordeen bin Mohd. Salleh

**AHLI MAJLIS / COUNCIL MEMBERS:**

Ir. Dr Wong Chin Chaw, Ir. Prof. Dr Siti Hamisah binti Tapsir, Ir. Chin Mee Poon, Ir. Peter Tan Hoh You, Ir. Kukanesan a/l Sakthiveil, Ir. Muhammad Imran bin Baharuddin, Ir. Adnan bin Zulkiple, Ir. David Lai Kong Phooi, Ir. Manogaran a/l K. Raman, Ir. Hj. Mohd. Hassin @ Mohd Hashim Daud, Ir. Assoc. Prof. Lt. Kol. Mohd. Hazani bin Hj. Shafie, Ir. Mohd. Rasid bin Osman, Ir. Woo Ah Keong, Ir. Yeo Boon Kah, Ir. Yusouf bin Ahmad, Ir. Dr Tee Tiam Ting, Ir. Vincent Chen Kim Kieong, Ir. Dr Tan Yean Guan, Ir. Dr G. Balamurugan, Ir. Yim Hon Wa, Ir. Patrick Cyril Augustin, Ir. Major (R) Hj. Ahmad Mazlan bin Othman, Ir. Assoc. Prof. Dr Norlida binti Buniamin, Ir. Hoo Choon Sean, Ir. Ching Chin Chuan, Ir. Awangku Hidup bin Awangku Hosain, Y. Bhg. Datuk Abdul Hadi bin Mohd. Deros, Ir. Dr Judin bin Abdul Karim

**BEKAS YANG DIPERTUA TERAKHIR / IMMEDIATE PAST PRESIDENT:**

Ir. Prof. Abang Abdullah bin Abang Ali

**BEKAS YANG DIPERTUA / PAST PRESIDENT:**

Y. Bhg. Tan Sri Ir. (Dr) J. G. Daniel, Ir. T. T. Chiam, Y. Bhg. Dato' Ir. Pang Leong Hoon, Y. Bhg. Academician Dato' Ir. Lee Yee Cheong, Ir. P.E. Chong, Y. Bhg. Dato' Ir. Abdul Rashid bin Ahmad, Ir. Dr Ting Wen Hui, Ir. Hj. Mohd Mazlan, Y. Bhg. Datuk Ir. (Dr) Hj. Ahmad Zaidée bin Laidin, Ir. Dr Gue See Sew

**PENGERUSI CAWANGAN / BRANCH CHAIRMAN:**

Pulau Pinang – Ir. Vincent Tan Huei Meng  
Selatan – Ir. Steve Chong Yoon On  
Perak – Y. Bhg. Dato' Ir. Hj. Abdul Rahman bin Dahan  
Timur – Y. Bhg. Dato' Ir. Hj. Annies bin Md. Ariff  
Terengganu – Y. Bhg. Dato' Ir. Hj. Mohamad bin Husin  
Negeri Sembilan – Ir. Hj. Ahmad Husaini bin Hj. Sulaiman  
Melaka – Ir. Hj. Abd Rahim bin Shamsudin  
Sarawak – Ir. Zawawi bin Embong  
Sabah – Ir. Lee Tet Fon  
Miri – Ir. Dr Edwin Jong Nyon Tchan  
Kedah-Perlis – Y. Bhg. Dato' Ir. Hj. Abdullah bin Hj. Abbas

**AHLI JAWATANKUASA PENERBITAN / STANDING COMMITTEE ON PUBLICATIONS:**

Pengerusi / Chairman: Ir. Prof Ruslan bin Hassan  
Naib Pengerusi / Vice Chairman: Ir. Dr G. Balamurugan a/l B. Gurusamy  
Setiausaha / Secretary: Ir. Assoc. Prof. Dr Junaidah binti Ariffin  
Pengerusi (Perpustakaan) / Library Chairman: Dr Chuah Teong Guan  
Ahli-Ahli / Committee Member: Ir. Chin Mee Poon, Ir. Mah Soo, Ir. Look Keman bin Hj. Sahari, Ir. Dr Jeffrey Chiang Choong Luin, Sdr. K.H. Man

**LEMBAGA PENGARANG / EDITORIAL BOARD:**

Ketua Pengarang / Chief Editor – Ir. Chin Mee Poon  
Pengarang (Bulletin) / Bulletin Editor – Ir. Mah Soo  
Pengarang (Jurnal) / Journal Editor – Ir. Assoc. Prof. Dr Aminuddin bin Mohd. Baki  
Setiausaha / Secretary – Ir. Assoc. Prof. Dr Junaidah binti Ariffin  
Ahli-Ahli / Committee Member – Ir. Dr Jeffrey Chiang Choong Luin, Ir. Look Keman bin Hj. Sahari, Sdr. K.H. Man

**AHLI JAWATANKUASA JOURNAL / SUB-COMMITTEE ON JOURNAL:**

Pengerusi / Chairman – Ir. Assoc. Prof. Dr Aminuddin bin Mohd. Baki  
Ahli-Ahli / Committee Member – Ir. Assoc. Prof. Dr Junaidah binti Ariffin, Ir. Mohd. Taufik bin Salleh, Ir. Mohd. Zawawi bin Ahmad, Ir. Dr Jeffrey Chiang Choong Luin, Assoc. Prof. Dr Mohamad Azmi bin Ayob

THE INSTITUTION OF ENGINEERS, MALAYSIA  
Bangunan Ingenieur, Lots 60 & 62, Jalan 52/4, P.O. Box 223,  
(Jalan Sultan) 46720 Petaling Jaya, Selangor.  
Tel: 03-7968 4001/4002 Fax: 03-7957 7678  
E-mail: sec@iem.org.my Homepage: http://www.iem.org.my

Printed by : SETIAKAWAN PRINTERS SDN. BHD.  
NO. 5 & 7, Jalan Industri PBP 11,  
Taman Industri Pusat Bandar Puchong, 47100 Selangor Darul Ehsan, Malaysia.  
Tel: 603-5891 7363 Fax:603-5891 7232/33 E-mail: skpsb@tm.net.my

# CONTENT

- 1 **Kesan Kuantiti Agen Penyerak Dalam Pencirian Saiz Zarah Oksida Seramik Menggunakan Kaedah Pembelajaran Laser by A. Muchtar**
- 6 **Analysis of Design Parameter Effects on Vibration Modes of a Motorcycle Drum Brake and Brake Shoe Using the Finite Element Method by Zahrul Fuadi**
- 13 **Elasto-Plastic Deformation of Hostun Sand During Cyclic Loading in Triaxial Test by Eqramul Hoque**
- 19 **A Generalised Price-Scoring Model for Tender Evaluation by Thum Peng Chew**
- 28 **Numerical Modelling of Reverse Pulse Cleaning on Rigid Ceramic Filters by T. G. Chuah**
- 34 **A Method to Evaluate Design Efficiency Based on Assembly Criteria in Support of Design for Modularity by A. B. Abdullah**
- 41 **Bedload Transport Model for Field Conditions - Using Characteristic Diameter Approach by Mohammad Ashiq**
- 53 **Highly Reactive Electrogenerated Zinc: Perparation and its Use in Cross-Coupling Reactions by Aishah Abdul Jalil**
- 61 **Determination of Probability Distribution for Data on Rainfall and Flood Levels in Bangladesh by M. Ferdows**
- 73 **Development and Performance Evaluation of a Prototype Electric Hybrid Powertrain System for Automotive Applications by Azhar Abdul Aziz**

## INTERNATIONAL ADVISORY PANEL

Prof. J. M. Owen                      Prof. Don Mclean                      Prof. Hiroshi Yabe  
*University of Bath, UK*                      *University of Southampton, UK*                      *University of Kyoto, Japan*

Prof. M. Rodds                      Prof. A. J. Saul  
*University of Wales, UK*                      *University of Sheffield, UK*

## BRANCHES

HEAD-QUARTERS	THE INSTITUTION OF ENGINEERS, MALAYSIA BANGUNAN INGENIEUR, LOT 60/62, JALAN 52/4 PETI SURAT 223, 46720 PETALING JAYA, SELANGOR.	TEL: 03-7968 4001 7968 4002 FAX: 03-7957 7678
KEDAH-PERLIS	THE INSTITUTION OF ENGINEERS, MALAYSIA CAWANGAN KEDAH-PERLIS, NO. 135, 2ND FLOOR, KOMPLEKS ALOR SETAR, LEBUHRAYA DARUL AMAN, 05100 ALOR SETAR, KEDAH.	TEL: 04-734 3420 FAX: 04-733 3962
PENANG	THE INSTITUTION OF ENGINEERS, MALAYSIA LEVEL 5, 5-A NORTHAM VENTURE, 37 JALAN SULTAN AHMAD SHAH, 10050 PENANG	TEL: 04-818 2045 808 2046 FAX: 04-818 2046
SARAWAK	THE INSTITUTION OF ENGINEERS, MALAYSIA ULTIMATE PROFESSIONAL CENTRE 2ND FLOOR, 16 JALAN BUKIT MATA KUCHING, 93100 KUCHING, SARAWAK.	TEL: 082-428 506 FAX: 082-243 718
MIRI	THE INSTITUTION OF ENGINEERS, MALAYSIA LOT 2935, 2ND FLOOR, FARADALE COMMERCIAL CENTRE, JALAN BULAN SABIT, 98000 MIRI, SARAWAK.	TEL: 085-453 297 FAX: 085-454 959
PERAK	THE INSTITUTION OF ENGINEERS, MALAYSIA NO. 11, JALAN JOHAN 1/2, KAWASAN PERINDUSTRIAN PENGKALAN II, BATU 7, 31550 LAHAT, PERAK.	TEL: 05-365 4733 FAX: 05-365 4739
NEGERI SEMBILAN	THE INSTITUTION OF ENGINEERS, MALAYSIA No. 28-1, JALAN DURIAN EMAS 4, BETARIA BUSINESS CENTRE OFF JALAN DATO' SIAMANG GAGAP 70100 SEREMBAN, NSDK.	TEL: 06-767 7333 FAX: 06-767 7000
TERENGGANU	THE INSTITUTION OF ENGINEERS, MALAYSIA D/A JKR, TINGKAT 12, WISMA NEGERI, 20200 KUALA TERENGGANU, TERENGGANU	TEL: 09-622 2444 FAX: 09-623 5624
MELAKA	THE INSTITUTION OF ENGINEERS, MALAYSIA 2, JALAN MALINJA 2, TAMAN MALINJA, BUKIT BARU, 75150 MELAKA..	TEL: 06-284 8028 FAX: 06-283 8919
SABAH	THE INSTITUTION OF ENGINEERS, MALAYSIA 77-3, WISMA NEW FAR EAST, LUYANG, 88855 KOTA KINABALU, SABAH.	TEL: 088-236 749 FAX: 088-236 749
SOUTHERN	THE INSTITUTION OF ENGINEERS, MALAYSIA NO. 24-B, JALAN ABIAD, TAMAN TEBRAU JAYA, 80400 JOHOR BAHRU.	TEL: 07-331 9705 FAX: 07-331 9710
EASTERN	THE INSTITUTION OF ENGINEERS, MALAYSIA PEJABAT PENGARAH KERJA RAYA KELANTAN, JALAN KUALA KRAI, 15050 KOTA BHARU, KELANTAN DARUL NAIM.	TEL: 09-745 5901 FAX: 09-745 5970

# INFORMATION FOR AUTHORS

Submission of a contribution is taken to manifest the fact that the submission has not been submitted, accepted, published, or copyrighted elsewhere.

To avoid publication delays, please send all manuscripts to the Editor and observe the following guidelines.

## A) SUBMISSION OF PAPER

Send four (4) copies of your manuscript. Each copy should be complete with illustrations (if any) and an abstract. Submission should be made to the address below :

Chief Editor  
The Institution of Engineers, Malaysia  
Bangunan Ingenieur,  
Lots 60 & 62, Jalan 52/4  
Peti Surat 223, Jalan Sultan  
46720 Petaling Jaya  
Selangor Darul Ehsan  
Tel : 03 – 7968 4001 / 7968 4002  
Fax : 03 – 7957 7678

Three types of papers are solicited for the IEM Journal:

- (1) **Regular Paper** – Presentation of significant research, developments or applications in any field of engineering or within the scope of the journal. Tutorials and surveys are also considered. For submission, the length should be about 30 pages; double-spacing, single column with font of 12 (Times).
- (2) **Brief Paper** – A concise description of new technical concepts or applications within the scope of the journal. Submission should be about 20 pages; double-spacing, single column with font of 12 (Times).
- (3) **Technical Correspondence** – Letter to the Editor, comments on established engineering topics and discussion of published papers. Submission should be about 10 pages; double-spacing, single column with font of 12 (Times).

**NOTE:** In the event your paper is accepted for publication, the style of manuscript is in a different format (see point 7 below)

Manuscripts submitted as papers should state the significance of the problem in the Introduction.

Paper size should be of A4 (210 cm x 297 cm) with 2 cm margins on the left, right, and bottom and 3 cm from the top.

Enclose a signed letter giving your preferred address, telephone, fax number, and e-mail address (if available) for correspondence and return of proofs.

If the manuscript has been presented, published, or submitted for publication elsewhere, please also inform the Editor. Our primary objective is to published technical materials not available elsewhere, but on occasion we publish papers of unusual merit that have appear or will appear before other audiences.

The language of the journal is English. However, a papers in Bahasa Melayu are also accept and an abstract in English must be included.

Note that upon acceptance of an article for publication, the author is requested o submit a camera-ready format of the manuscript with single-spacing, double-column and font of 10 (Times). Illustrations and keywords of the papers should be included in the text. An electronic copy of the manuscript should also be submitted together with the hardcopies. The author is also requested to submit a passport-sized and a short biography. This information will be sent to the author by the Editor.

## B) STYLE FOR MANUSCRIPT

The manuscript should be typewritten using double-space, using font of 12 (Times); use one side of sheet only and single column format.

The format for IEM Journal follows that of the IEEE Transactions (USA), except that the

submission for you should follow Point 1 above.

As we practice blind review, please do not put your name and address in the manuscript.

Provide and informative 100- to 250- word abstract at the head of the manuscript.

All section should be numbered in Roman such as 1, 11, etc. with the title in capitals.

Sub-sections should be numbered in alphabet such as A, B, C, etc.

Sub-sub-sections (if any) should be numbered as A., A.2, etc.

Number all equations in round brackets such as ( ) and flush to right. The equation should be in the center.

References in the text should be cited each by a reference number in square brackets, e.g. [12] or [4-6], etc.

In the reference section, the references should be written as follows :

Style for papers: Reference Number, Author, first initials followed by last name, title (italics), location and publisher, year, chapter or page numbers, month, and year.

Style for books : Reference Number, Author, first initial followed by last name, title (italics), location and publisher, year, chapter or page numbers (if desired).

**Sample format for REFERENCES is as follows :**

(for paper)

[3] M. Khalid, S. Omatu, and R. Yusof, "Temperature Regulations with Neural Networks and Alternative Control Shcemes" IEEE Trans on Neural Networks, Vol. 6, No. 3, pp. 572-582, May, 1995.

(for book)

[4] S. Omatu, M. Khalid, and R. Yusof, Neural-Control and Its Applications, London: Springer-Verlag, 1995.

If your paper is in Bahasa Melayu, please provide an abstract in English.

In the event of the paper being accepted, we will require the camera-steady manuscript to be submitted in a double column format, single-spacing and font of 10 (Times). Include all illustrations in between the text (if possible). An electronic copy should be submitted. We prefer word processing to be done in Microsoft Word. If other word processing software is used, please specify.

## C) STYLE FOR ILLUSTRATIONS

Try to include the illustrations in between the text.

Originals for illustrations should be sharp, noise-free and of good contrast.

Each illustration must be numbered such as "Figure 1, Figure 2, etc." and have a meaningful caption at the bottom.

For tables, the caption must be at the top.

On graphs, show only the coordinate axes, or at most the major grid lines, to avoid a dense hard-thread result.

All lettering should be large enough to permit legible reduction of the figure to column width, perhaps as much as 4:1. Typing on figures is not acceptable.

Photographs should be glossy prints, of good contrast and gradation and any reasonable size.

Number each original on the back, or at the bottom of the front, and also indicate the author's name.

Upon acceptance of your paper submit a set of the figures and a list of the captions.

### ADVERTISING

To advertise in Journal of IEM, please contact Dimension Publishing Sdn. Bhd. Advertisements that appear in Journal of IEM implies neither endorsement nor recommendation by The Institution of Engineers, Malaysia.

### SUBSCRIPTIONS

To subscribe Journal of IEM please contact Dimension Publishing Sdn. Bhd. (address below).

**Dimension Publishing Sdn. Bhd.** (449732-T)

Unit No. 3A-10, Block F, Phileo Damansara 1  
9 Jalan 16/11, Off Jalan Damansara  
46350 Petaling Jaya, Selangor Darul Ehsan.  
Tel: (603) 7955 5335  
Fax: (603) 7955 5773  
Email: info@dimensionpublishing.com

### PUBLICATION DISCLAIMER

The publication has been compiled by IEM and Dimension with great care and they disclaim any duty to investigate any product, process, service, design and the like which may be described in this publication. The appearance of any information in this publication does not necessarily constitute endorsement by IEM and Dimension. They do not guarantee that the information in this publication is free from errors. IEM and Dimension do not necessarily agree with the statement or the opinion expressed in this publication.

### COPYRIGHT

Journal of IEM is the official magazine of The Institution of Engineers, Malaysia and is published by Dimension Publishing Sdn. Bhd. The Institution and the Publisher retain the copyright in all material published in the magazine. No part of this magazine may be reproduced and transmitted in any form, or stored in any retrieval system of any nature without the prior written permission of IEM and the Publisher.