

STABILITY ANALYSIS OF DISC BRAKE SQUEAL CONSIDERING TEMPERATURE EFFECT

Abd Rahim Abu Bakar*
Mohd Kameil Abdul Hamid
Afandi Dzakaria
Badri Abdul Ghani
Maziah Mohamad

Faculty of Mechanical Engineering
Universiti Teknologi Malaysia
81310 UTM, Skudai, Johor, Malaysia

ABSTRACT

Passenger cars have become one of the main transportations for people travelling from one place to another. Indeed, vehicle quietness and passenger comfort issues are a major concern. One of vehicle components that occasionally generate unwanted vibration and unpleasant noise is the brake system. Brake squeal noise is the most troublesome and irritating one to both car passenger and the environment, and is expensive to brakes and carmakers in terms of warranty costs.

Brake squeal has been studied over 20 years ago through experimental, analytical and numerical methods in an attempt to understand, to predict and to prevent squeal occurrence. In recent years, the finite element (FE) method has become the preferred method due to inadequacy of experimental methods in predicting squeal at early stage in the design process. However, the drawbacks of the FE method are over-predictions and missing unstable modes in the squeal frequency range.

This paper attempts to improve the drawbacks by considering temperature effect, which is typically neglected by many previous investigators. Prediction of disc brake squeal is performed using complex eigenvalue analysis that available in ABAQUS V6.4. In doing so, a validated and detailed 3-D finite element model of a real disc brake is used. Predicted results are then compared to those obtained in the experimental results with and without the effect of temperature.

Keywords: *Squeal, disc brake, complex eigenvalue, temperature, finite element.*

1.0 INTRODUCTION

Passenger cars have become one of the main transportations for people travelling from one place to another. Indeed, vehicle quietness and passenger comfort issues are a major concern. One of vehicle components that occasionally generate unwanted vibration and unpleasant noise is the brake system. As a result, carmakers, brake and friction material suppliers face challenging tasks to reduce

* Corresponding author: E-mail: arahim@fkm.utm.my, Tel: +6-07-5534572, Fax: +6-07-5566159

high warranty payouts. Akay [1] stated that the warranty claims due to the noise, vibration and harshness (NVH) issues including brake squeal in North America alone were up to one billion US dollars a year. Similarly, Abendroth and Wernitz [2] noted that many friction material suppliers had to spend up to 50 percent of their engineering budgets on the NVH issues.

In a recent review, Kinkaid *et. al.* [3] listed a wide array of brakes noise and vibration phenomenon described by its own terminology. Squeal, creep-groan, moan, chatter, judder, hum, and squeak are among the names that can be found in the open literature. Of these noises, squeal is the most troublesome and irritant one to both car passengers and the environment, and is expensive to the brakes and car manufacturers in terms of warranty costs [4]. It is well accepted that brakes squeal is due to friction - induced vibration or self-excited vibration via a rotating disc. Brake squeal frequently occurs at frequency above 1 kHz [5] and is described as sound pressure level above 78 dB [6].

Brake squeal has been studied since 1930's by many investigators through experimental, analytical and numerical methods in an attempt to understand, to predict and to prevent squeal occurrence. In recent years, the finite element (FE) method, particularly using complex eigenvalue analysis, has become the preferred method in studying brake squeal. The popularity of finite element analysis (FEA) is due to the inadequacy of experimental methods in predicting squeal at early stage in the design process. Moreover, FEA can potentially simulate any changes made on the disc brake components much faster and easier than experimental methods. A recent review by [7] stated that experimental methods are expensive due to hardware costs and long turnaround time for design iterations. In addition, discoveries made on a particular type of brake are not always transferable to other types of brake and quite often product developments are based on trial-and-error basis. Furthermore, a stability margin is frequently not found experimentally.

However, the crux now lies in how the FE method can be a predictive tool rather than a diagnosis tool. Kung *et. al.* [8] commented that although the complex eigenvalue analysis was successfully used in brake squeal problems, the shortcomings of this method were over-predictions and sometimes missing, unstable modes in the squeal frequency range. In a similar paper, they suggested that in order to improve the complex eigenvalue predictability, user experience and engineering judgement were essential to obtain reliable results. In addition to this, they also stated that realistic friction coupling between pad and disc interface, consideration of friction-induced (positive and/or negative) damping and lining wear could also play important role for improving the predictability. AbuBakar [9] in his thesis found that combination of realistic surface topography of brake pads with friction-induced negative damping could produce better prediction in the complex eigenvalue analysis.

Sanders *et. al.* [10] in his work recommended that for up-front design and system modelling, it is desirable to describe the frictional behaviour of a brake lining as a function of contact pressure, sliding speed and temperature. Similarly, Mahajan *et. al.* [11] stated that asymmetric stiffness matrix that represented friction coupling between the pads and the disc interface due to friction coefficient which could be assumed as a function of contact pressure, sliding velocity and other factors such as temperature and humidity. However in their stability

analysis, temperature and humidity effects were ignored. In the past, most of FE models [11-15] did account only for friction coefficient as a function of contact pressure and sliding velocity. Recently the authors found another way to improve the complex eigenvalue analysis predictability, i.e. by considering friction coefficient (μ) as a function of contact pressure, sliding velocity and temperature. In an attempt to do so, a validated and detailed FE model of a real brake assembly is used throughout this work. Complex eigenvalue analysis that is available in a commercial software package, ABAQUS v6.4 is fully utilised. Predicted results are then compared to those obtained in the experimental results with and without temperature effects.

2.0 FINITE ELEMENT MODEL

A detailed 3-dimensional finite element (FE) model of a Mercedes solid disc brake assembly is developed. Figures 1a and 1b show a real disc brake of a floating calliper design and its FE model, respectively. The FE model consists of a disc, a piston, a calliper, a carrier, piston and finger pads, two bolts and two guide pins. All the disc brake components are modelled carefully in order to achieve as accurate a representation as possible of a real disc brake. Most of the critical geometries of the components are taken into account except for some small, very local features such as tiny grooves in the brake pad and the calliper, chamfers of sharp edges and a brake fluid transfer hole. A rubber seal (attached to the piston) and two rubber washers (attached to the guide pins) in this brake assembly are not included in the FE model either. It is thought that those local features and those two small components are not significant enough to affect squeal occurrence. Damping shims are also absent since they have been removed in the squeal experiments carried out before and unrelated to the present work. The FE model uses up to 8350 solid elements and approximately 37,100 degrees of freedom (DOFs). The number of degree of freedom is excluding the spring elements that have been used to connect disc brake components.

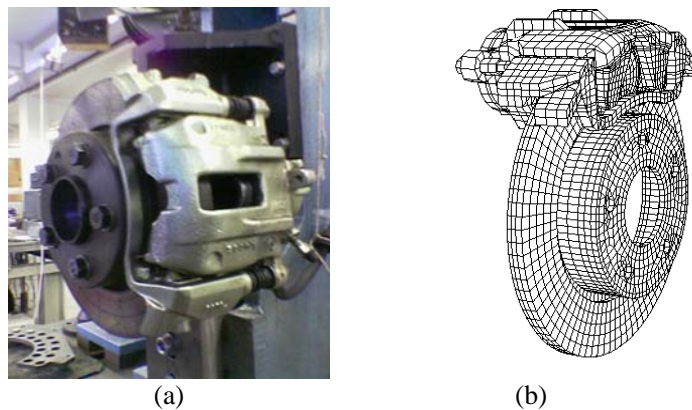


Figure 1: Disc brake assembly a) an actual disc brake b) its FE model

The disc, brake pads, piston, guide pins and bolts are developed using a combination of 8-node (C3D8) and 6-node (C3D6) linear solid elements while other components are developed using a combination of 8-node (C3D8), 6-node (C3D6) and 4-node (C3D4) linear solid elements. Element types in bracket are the notations in ABAQUS' nomenclature. Details for each of the components are given in Table 1.

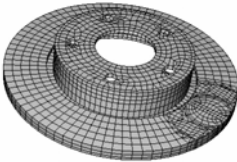
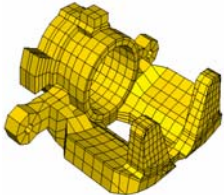
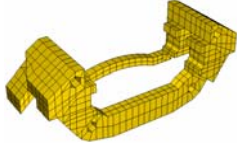
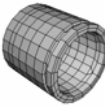
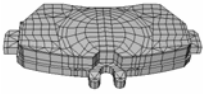
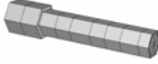

Since the contact between the disc and the friction material is crucial, a realistic representation of those interfaces should be made. The friction material of pads has a rougher surface and is softer than the disc, which has quite a smooth and flat surface, and is less prone to wear. Therefore in this work, actual surfaces at the piston and finger pads are measured and considered at macroscopic level. A Mitutoyo linear gauge LG-1030E and a digital scale indicator are used to measure and provide readings of the surface respectively, as shown in Figure 2. The linear gauge is able to measure the surface height distribution from 0.01mm up to 12 mm.

Prior to the measurement, the back plate must be to lie flat and level. This can be confirmed by taking four measurement points at both pad abutments and the digital indicator should show nearly identical heights. Node mapping, as shown in Figure 2, is required so that surface measurement can be made at desirable positions, which are generated from the FE model. By doing this, the information obtained in the measurement can be used to adjust the coordinates of the nodes of piston and finger pads in the brake pad interface model. There are about 227 nodes on the piston pad interface and 229 nodes on the finger pad interface. Figure 3 shows the surface topography of the piston and finger pads.



Figure 2: Arrangement of tools for surface measurement

Table 1: Description of disc brake components

<i>COMPONENTS</i>		<i>TYPES OF ELEMENT</i>	<i>NO. OF ELEMENTS</i>	<i>NO. OF NODES</i>
	<i>Disc</i>	C3D8 C3D6	3090	4791
	<i>Calliper</i>	C3D8 C3D6 C3D4	1418	2242
	<i>Carrier</i>	C3D8 C3D6 C3D4	862	1431
	<i>Piston</i>	C3D8 C3D6	416	744
	<i>Back plate</i>	C3D8 C3D6	2094	2716
	<i>Friction Material</i>	C3D8 C3D6		
	<i>Guide pin</i>	C3D8 C3D6	388	336
	<i>Bolt</i>	C3D8 C3D6	80	110

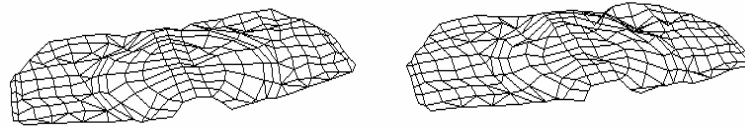


Figure 3: A real surface topography of the piston pad (left) and finger pad (right)

Upon completion of the modelling, all the disc brake components must be brought together to form an assembly model. Contact interaction between disc brake components is represented by linear spring elements (SPRING 2 in ABAQUS nomenclature) except for the disc/pad interface where surface-to-surface contact elements are employed. This selection is due to the fact that contact pressure distributions at the disc/pad interface are more significant than at the other component contact interfaces. Figure 4 shows a schematic diagram of contact interaction that has been used in the disc brake assembly model. A rigid boundary condition is imposed at the boltholes of the disc and of the carrier bracket, where all six degrees of freedom are rigidly constrained. In order to ensure accuracy of the developed FE model, three validation stages are established, i.e., modal analysis at component and assembly levels and confirmation of static contact pressure distributions and contact area of the pads. Details of the validation processes were given in [16].

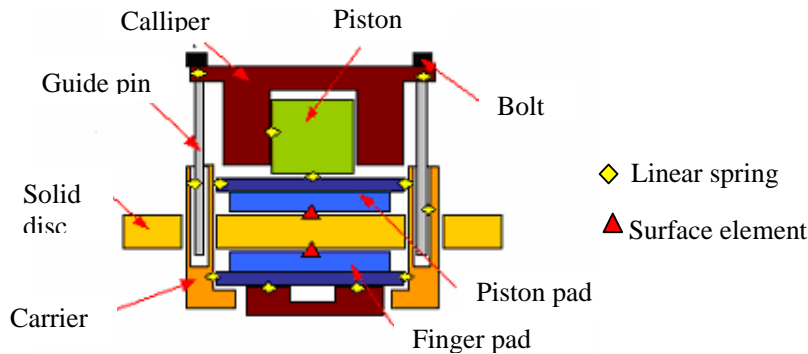


Figure 4: Schematic diagram of contact interaction in a disc brake assembly

3.0 COMPLEX EIGENVALUE ANALYSIS

The complex eigenvalue analysis made available in ABAQUS is fully utilised to determine disc brake assembly stability. The positive real parts of the complex eigenvalue indicate the degree of instability (unstable frequencies and unstable modes) of the disc brake assembly and are thought to imply the likelihood of squeal occurrence. The essence of this method lies in the asymmetric stiffness matrix that is derived from the contact stiffness and the friction coefficient at the

disc/pads interface [17]. In order to perform the complex eigenvalue analysis using ABAQUS, four main steps are required [15]. They are given as follows:

1. Non-linear static analysis for applying brake-line pressure
2. Non-linear static analysis to impose rotational speed on the disc
3. Normal mode analysis to extract natural frequency of undamped system
4. Complex eigenvalue analysis that incorporates the effect of friction coupling

In this analysis, the complex eigenvalues are solved using the subspace projection method. The eigenvalue problem can be given in the following form:

$$(\lambda^2 \mathbf{M} + \lambda \mathbf{C} + \mathbf{K})\mathbf{y} = 0 \quad (1)$$

where \mathbf{M} is the mass matrix, \mathbf{C} is the damping matrix, \mathbf{K} is the asymmetric (due to friction) stiffness matrix and \mathbf{y} is the eigenvector. This unsymmetrical stiffness matrix leads to complex eigenvalues and eigenvectors. In the third step stated above, the symmetric eigenvalue problem is first solved, by dropping damping matrix \mathbf{C} and the unsymmetric contributions to the symmetric stiffness matrix \mathbf{K}_s , to find the projection subspace. Therefore the eigenvalue, λ becomes a pure imaginary where $\lambda = i\omega$, and the eigenvalue problem now becomes:

$$(-\omega^2 \mathbf{M} + \mathbf{K}_s)\mathbf{z} = 0 \quad (2)$$

This symmetric eigenvalue problem then is solved using subspace eigensolver [1]. The next step is that the original matrices are projected in the subspace of real eigenvectors, \mathbf{z} and given as follows:

$$\mathbf{M}^* = [\mathbf{z}_1, \mathbf{z}_2, \dots, \mathbf{z}_n]^T \mathbf{M} [\mathbf{z}_1, \mathbf{z}_2, \dots, \mathbf{z}_n], \quad (3a)$$

$$\mathbf{C}^* = [\mathbf{z}_1, \mathbf{z}_2, \dots, \mathbf{z}_n]^T \mathbf{C} [\mathbf{z}_1, \mathbf{z}_2, \dots, \mathbf{z}_n], \quad (3b)$$

$$\mathbf{K}^* = [\mathbf{z}_1, \mathbf{z}_2, \dots, \mathbf{z}_n]^T \mathbf{K} [\mathbf{z}_1, \mathbf{z}_2, \dots, \mathbf{z}_n], \quad (3c)$$

Now the eigenvalue problem is expressed in the following form:

$$(\lambda^2 \mathbf{M}^* + \lambda \mathbf{C}^* + \mathbf{K}^*)\mathbf{y}^* = 0 \quad (4)$$

The reduced complex eigenvalues problem is then solved using the QZ method for a generalized nonsymmetrical eigenvalue problem. The eigenvectors of the original system are recovered by the following:

$$\mathbf{y}^k = [\mathbf{z}_1, \mathbf{z}_2, \dots, \mathbf{z}_n] \mathbf{y}^{*k} \quad (5)$$

where \mathbf{y}^k is the approximation of the k -th eigenvector of the original system. The reader may refer to [15, 17] for the details of frictional contact formulation.

4.0 EXPERIMENTAL AND PREDICTION OF DISC BRAKE SQUEAL

In this work, only part of the experimental results obtained in [18] are utilised for comparison. Table 2 shows operating conditions for six squeal tests and their respective squeal frequencies captured in the experiments. From the table, it is shown that test numbers T01 and T19 have two squeal frequencies at 3.6 and 6.6 kHz, and 2.9 and 6.8 kHz respectively. For the other test numbers (T06, T27, T45 and T47) there is only one squeal frequency captured as given in Table 2. All those squeal frequencies are characterised either by 4, 5, 6 or 7 nodal diameters (ND) of the disc. For illustration, Figure 5 shows distributions of squeal frequencies against brake-line pressure. It shows that there are two squeal frequencies at brake-line pressure range of 0.1~0.2 MPa, three squeal frequencies at range of 0.3~0.4 MPa, one squeal frequency between 0.6~0.7 MPa and two squeal frequencies at brake-line pressure range of 0.8~0.9 MPa. This figure will be used later to compare with prediction results from the FE method.

Table 2: Operating conditions of squeal test [18]

Test No.	Average Temperature, T (°C)	Pressure, p (MPa)	Speed, Ω (rad/s)	Kinetic Friction Coefficient, μ	Squeal Frequency (Hz)
T01	33.0	0.33	3.22	0.46	3516, 6599
T06	83.7	0.83	6.32	0.50	7540
T19	255.8	0.16	25.57	0.48	2944, 6797
T27	131.7	0.66	3.23	0.55	7112
T45	76.2	0.81	3.22	0.57	7420
T47	232.2	0.38	3.278	0.50	8201

Firstly, complex eigenvalue analysis is simulated without temperature effect. Using similar operating conditions as shown in Table 2, it is found that there are 48 unstable frequencies predicted compared to 8 squeal frequencies captured in the experiments as illustrated in Figure 6. It is suggested that there are over-predictions in the simulation results even though those 8 unstable frequencies are reasonably matched with the experimental data. From Figure 6, there are about 8 unstable frequencies predicted for brake-line pressure range of 0.1~0.2 MPa whereas only 2 squeal frequencies captured in this range. For brake-line pressure between 0.3~0.4 MPa, complex eigenvalue analysis predicts about 19 unstable frequencies whilst in the experiments there are only 3 squeal frequencies captured and thus it indicates that there are 15 unstable frequencies over predicted. At brake-line pressure range of 0.6~0.7 MPa, there are about 7 unstable frequencies obtained in the complex eigenvalue analysis compared to only one squeal

frequency appears in the squeal tests. Finally, for brake-line pressure between 0.8-0.9 MPa, 14 unstable frequencies are predicted compared to 2 squeal frequencies in the experiments. This brings to over-predictions of 12 unstable frequencies. By looking at those over-predictions for the whole range of brake-line pressure, it is suggested that improvement in the predictability particularly using complex eigenvalue analysis should be made.

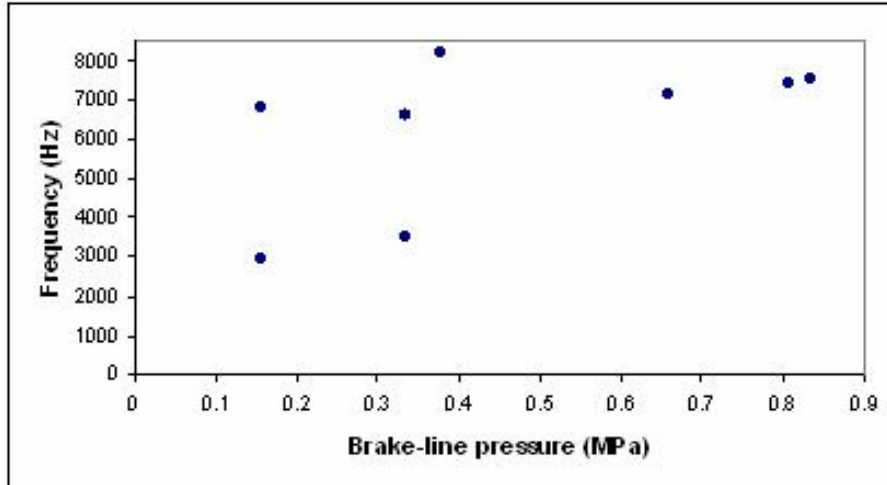


Figure 5: Experimental results of disc brake squeal [18]

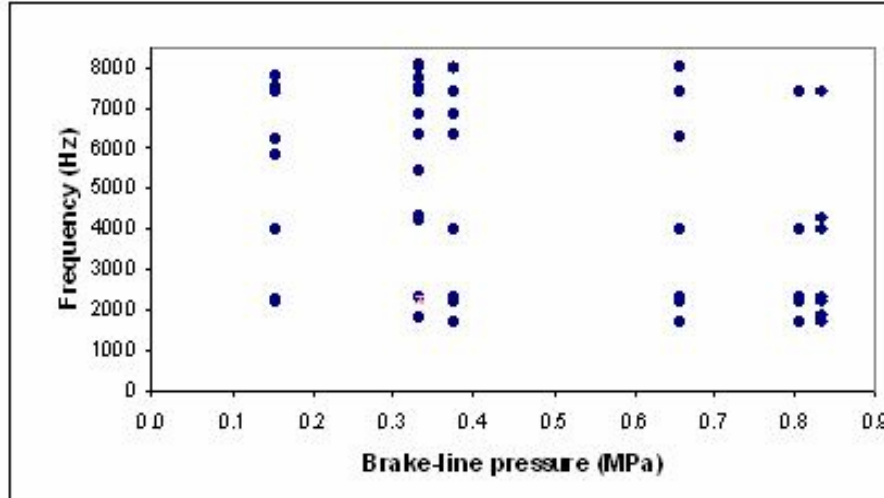


Figure 6: Predicted unstable frequencies without consideration of temperature effect

In this paper, the authors attempt to include temperature effect by considering its dependency to friction coefficient ($T-\mu$ dependency). This could improve predictability in complex eigenvalue analysis. In order to include temperature effect, previous ABAQUS input file (Figure 7(a)) need to be modified as shown in Figure 7(b). Initial temperature on the brake pad and the disc is set to 20 degree Celsius [19] and the final temperature is given in Table 2.

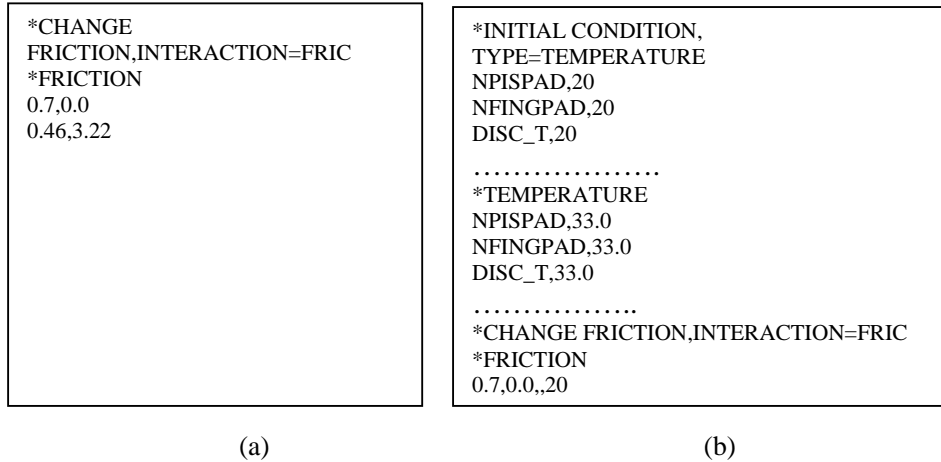


Figure 7: ABAQUS input file: (a) without temperature effect (b) with temperature effect

Using a similar approach i.e., complex eigenvalue analysis, six simulations are performed according to the operating conditions given in Table 2 and with the inclusion of temperature effect ($T-\mu$ dependency). From Figure 8, it is shown that the number of unstable frequencies is far more less than those predicted without temperature effect. There are only 15 unstable frequencies appeared in complex eigenvalue analysis compared to 48 unstable frequencies (Figure 6), which is about reduction of 69 percent. Now by looking at a certain range of brake-line pressure, Figure 8 shows that at range of 0.1~0.2 MPa good agreement is achieved between predicted and measured data. There are 2 unstable frequencies predicted in complex eigenvalue analysis and these frequencies are almost the same as captured in the squeal tests. For brake-line pressure of 0.3~0.4 MPa, there are 7 unstable frequencies appeared in the analysis compared to 3 squeal frequencies captured in the experiments which are 4 unstable frequencies over predicted. At brake-line pressure range of 0.6~0.7 MPa only 3 unstable frequencies are predicted which are two more than captured in the squeal tests. Finally for brake-line pressure between 0.8~0.9 MPa, complex eigenvalue analysis predicts 3 unstable frequencies compared to 2 squeal frequency in the experiments which is only one unstable frequency over predicted. In overall, with the inclusion of temperature effect predictability in complex eigenvalue analysis can be improved and subsequently it increases reliability in the predicted results.

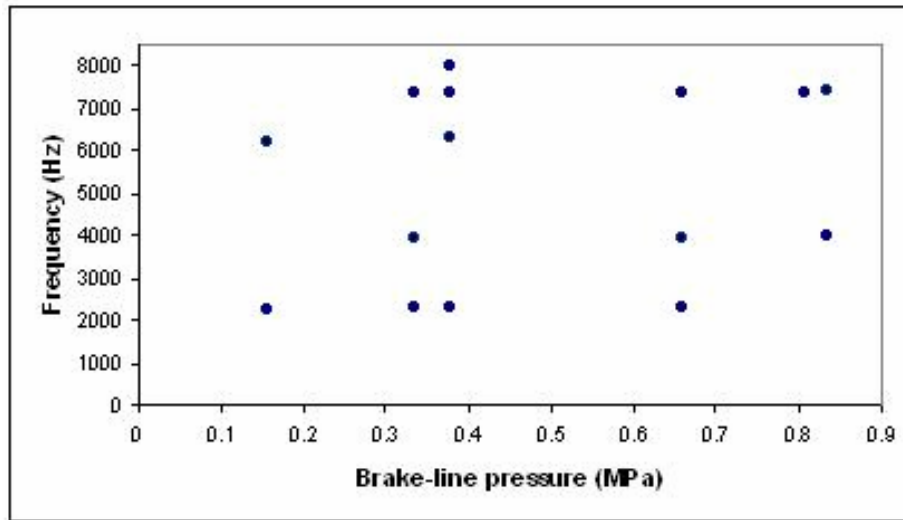


Figure 8: Predicted unstable frequencies with consideration of temperature effect

It is also important to note that correlation of the prediction results is not only based on the unstable frequencies alone but also in terms of their unstable mode shapes. For example, T19 has two squeal frequencies which are characterised by 4ND at 2944 Hz and 6ND at 6797 Hz. Similarly, in complex eigenvalue analysis, there are two unstable frequencies predicted at 2847 Hz and 6249 Hz which are characterised by 4ND and 6ND respectively as shown in Figure 9. The results show that not only unstable frequencies are close enough to measured data but also their unstable modes match well with those mode shapes found in the experiments.

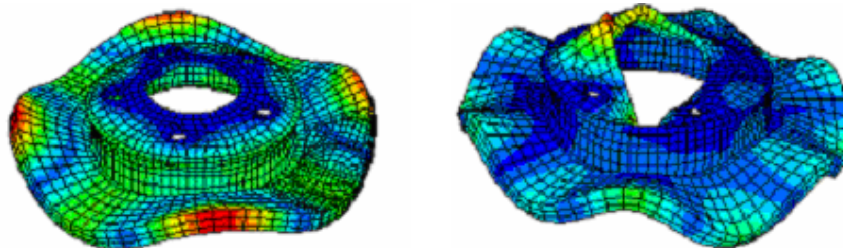


Figure 9: Unstable modes of the disc characterized by 4ND (left) and 6ND (right)

5.0 CONCLUSIONS

This paper presents numerical analysis of disc brake squeal using the finite element (FE) method. Complex eigenvalue analysis that made available in a

commercial software package called ABAQUS v6.4 is fully utilised to predict unstable frequencies and their modes. The FE model of a real disc brake assembly is simulated for two different cases i.e., with and without temperature effect. It is found that with the inclusion of temperature effect predictability in the complex eigenvalue analysis can be improved where the results show that the numbers of unstable frequencies are reduced significantly than those predicted without temperature effect. It is also found the predicted unstable frequencies are not only have reasonably good agreement with the experimental results but also their mode shapes are also matched well. This suggests that temperature dependent friction coefficient relationship cannot be easily ignored in predicting squeal using complex eigenvalue analysis as it can reduce over-prediction of unstable frequencies and thus produces more reliable and better correlation against experimental data.

ACKNOWLEDGEMENT

The first author would like to thank Dr Huajiang Ouyang for his valuable comments and Dr. Simon James for providing his experimental results.

REFERENCES

1. Akay, A., 2002, Acoustics of friction, *J. Acoust. Soc. Am.*, 111(4):1525-1548.
2. Abendroth, H. and Wernitz, B., 2000, The integrated test concept dyno-vehicle; performance and noise, *S.A.E Technical Paper 2000-01-2774*.
3. Kinkaid, N.M., O'Reilly, O.M. and Papadopolous, P., 2003, Review of automotive disc brake squeal, *Journal of Sound and Vibration*, 267: 105-166.
4. Crolla, D.A. and Lang, A.M., 1991, Brake noise and vibration – The state of the art, *Vehicle Tribology Leeds-Lyon Tribology Series*, 18: 165-174.
5. Lang, A.M. and Smales, H., 1983, An approach to the solution of disc brake vibration problems, *Proc. IMechE*, C37/83.
6. Eriksson, M., 2000, Friction and contact phenomenon of disc brakes related to squeal, *PhD Thesis*, Faculty of Science and Technology, Uppsala University.
7. Ouyang, H., Nack, W.V., Yuan, Y. and Chen, F., 2005, Numerical analysis of automotive disc brake squeal: a review, *Int. J Vehicle Noise and Vibrations*, 1(3/4): 207-230.
8. Bajer, A., Belsky, V. and Kung, S., 2004, The influence of friction-induced damping and nonlinear effects on brake squeal analysis, *S.A.E. Technical Paper 2004-01-2794*.
9. AbuBakar, A.R., 2005, Modelling and simulation of disc brake contact analysis and squeal, *PhD Thesis*, Department of Mechanical Engineering, University of Liverpool.
10. Sanders, P.G., Dalka, T.M. and Basch, R.H., 2001, A reduced-scale brake dynamometer for friction characterisation, *J. Tribology International*, 34: 609-615.

11. Mahajan, S.K., Hu, Y. and Zhang, K., 1999, Vehicle disc brake squeal simulations and experiences, *S.A.E. Technical Paper* 1999-01-1738.
12. Goto, Y., Amago, T., Chiku, K., Matsushima, T. and Ishihara, T., 2004, Experimental identification method for interface contact stiffness of FE model for brake squeal, *Proc. IMechE International Conference-Braking 2004*, Leeds, pp. 143-155.
13. AbuBakar, A.R., Ouyang, H., Li, L. and Siegel, J.E., 2005, Brake pad surface topography Part II: Squeal generation and prevention, *SAE Technical Paper* 2005-01-3935.
14. Liles, G.D., Analysis of disc brake squeal using finite element methods, *S.A.E. Technical Paper* 891150.
15. Bajer, A., Belsky, V. and Zeng, L.J., 2003., Combining a nonlinear static analysis and complex eigenvalue extraction in brake squeal simulation, *S.A.E Technical Paper* 2003-01-3349.
16. AbuBakar, A.R. and Ouyang, H., A prediction methodology of disc brake squeal using complex eigenvalue analysis, Submitted to *Journal Computers and Structures*.
17. ABAQUS Manual Version 6.4, 2003, Hibbit, Karlsson & Sorensen, Inc.
18. James, S., 2003, An experimental study of disc brake squeal, *PhD Thesis*, Department of Engineering, University of Liverpool.
19. Day, A.J., 1988, An analysis of speed, temperature, and performance characteristics of automotive drum brakes, *Journal of Tribology*, 110: 295–305.