

DEVELOPMENT OF LOW PROFILE UNIDIRECTIONAL ANTENNA FOR  
WIRELESS LOCAL AREA NETWORK APPLICATION

LWAY FAISAL ABDULRAZAK

A project report submitted in partial fulfillment of the  
requirements for the award of the degree of  
Master of Electrical Engineering  
(Electronics & Telecommunication)

Faculty of Electrical Engineering  
Universiti Teknologi Malaysia

MAY 2007

To  
My beloved Mother, Father, Brothers  
and to  
The soul of my uncle Ahmed Dawod Alsuhayl  
who devoted his life towards defending Islam and our country

## ACKNOWLEDGEMENT

First of all, Praise to Allah, the Most Gracious and Most Merciful, Who has created the mankind with knowledge, wisdom and power.

I would like to take this opportunity to express my deepest gratitude to a number of people who have provided me with invaluable help over the course of my studies.

I thank Prof. Dr. Tharek Abd. Rahman, my supervisor, for his priceless help and advice over the course of my research, and for reviewing this thesis. His wise suggestions have always helped me and a great number of them have gone into the thesis.

Special thanks are dedicated to the members of Wireless Communication Center who offered invaluable technical assistance and supports, En. Mohamed Abu Bakar, En. Omar bin Abdul Aziz, En. Mohammed Khomeini.

My sincere gratitude and thanks also goes to those who have contributed to the completion of this research directly or indirectly.

## **ABSTRACT**

This thesis will review the project conducted the development of a low profile unidirectional antenna for WLAN applications, performed with frequency range 2.4-2.4835GHz. The Radial Waveguide Slot Array Antenna (RWSA) is investigated as a low profile, significant shape, lightly weight, simple but effective, easy to design and fabricate with reasonable cost efficient. Simulation and optimization of structure based on Zeland Fidelity - FDTD (Finite-Difference Time-Domain) with Full-3D EM Simulation for the radiation pattern, and return loss. The other part of this project deals with producing design relying on optimum simulation results. The developed antenna was tested in terms of return loss, gain and radiation pattern. Finally, integrated experimental trial had been compared with a monopole antenna on an Access point for WLAN. Measurements are conformed to results presented by the prototype simulation.

## ABSTRAK

Thesis ini akan mengulas project pembentukan antenna satu arah berprofil rendah untuk aplikasi WLAN, dalam julat frekuensi antara 2.4-2.4835GHz. Antena Radial Waveguide Slot Array (RWSA) telah didapati mempunyai rekabentuk yang menarik dan ringkas, ringan, mudah dihasilkan, berkos rendah dan mempunyai nilai gandaan yang tinggi. Simulasi dan optimasi struktur antenna dilakukan menggunakan perisian Zeland Fidelity - FDTD (Finite-Difference Time-Domain) dengan simulasi Full-3D EM untuk menentukan corak radiasi dan nilai kehilangan balikan. Seterusnya project ini telah menghasilkan rekabentuk antenna RWSA berdasarkan hasil simulasi yang paling optimum. Kehilangan balikan, gandaan dan juga corak radiasi antenna yang dihasilkan telah diukur dan dibandingkan dengan antenna satu kutub bagi aplikasi 'Access point' untuk WLAN. Pengukuran didapati bertepatan dengan hasil simulasi yang diberikan oleh perisian Zeland Fidelity.

## CONTENTS

<b>CHAPTER</b>	<b>TITLE</b>	<b>PAGE</b>
	<b>TITLE</b>	i
	<b>DECLARATION</b>	ii
	<b>DEDICATION</b>	iii
	<b>ACKNOWLEDGEMENT</b>	iv
	<b>ABSTRACT</b>	v
	<b>ABSTRAK</b>	vi
	<b>CONTENTS</b>	vii
	<b>LIST OF TABLES</b>	xi
	<b>LIST OF FIGURES</b>	xii
	<b>LIST OF ABBREVIATIONS</b>	xv
	<b>LIST OF APPENDICES</b>	xvii
<b>I</b>	<b>INTRODUCTION</b>	
	1.1 Introduction	1
	1.2 Problem Statement	2
	1.3 Objective	2
	1.4 Research scope	3
	1.5 Research Methodology	3
	1.6 Thesis Outline	6

## **II WIRELESS LOCAL AREA NETWORK AND RADIAL WAVEGUIDE SLOT ARRAY ANTENNA**

2.1	Introduction	7
2.2	Wireless LAN background	7
2.3	Indoor hot spot WLAN service and outdoor last-mile broadband access	9
2.4	IEEE 802.11b/a/g Standards	11
2.5	Comparing the Wireless Standards	12
2.6	RWSA Evaluation	15
2.7	Introduction to RWSA	15
2.8	Single-Layer RWSA Antenna Design	18
2.9	Problem Configuration of RWSA	21
2.10	General Theoretical Consideration	22
2.10.1	Model of single slot	22
2.10.2	Model of slots' assembly in radial line	23
2.11	Small RWSA Antenna	26
2.12	Summery	28

## **III RWSA ANTENNA DESIGN AND SIMULATION MODELLING**

3.1	Introduction	29
3.2	Antenna Structure	30
3.3	Initial Calculation Results	33
3.4	Finite Difference Time Domain (FDTD) Simulation	35
3.5	Antenna Simulation Modeling	37
3.6	Antenna Design and simulation results	40
3.7	Simulation results	41
3.8	Radiation pattern	41
3.9	Return loss Various Frequencies	42
3.10	Comparison between this design and previous design	43

3.11	Summary	44
------	---------	----

## IV

## FABRICATION AND MEASUREMENTS

4.1	Introduction	45
4.2	Antenna Prototype	45
4.3	Antenna Measurement Setup	48
4.4	Return Loss Measurement Result for the first Design	48
4.5	RWSA 2.4 GHz Simulations and Prototype (first design) Measurement Comparison	49
4.6	Second design	49
4.6.1	Introduction	49
4.6.2	Theoretical ideas and solutions	49
4.6.3	Second design structure	50
4.6.4	Comparison between the 1st & 2nd design	51
4.6.5	Return Loss Measurement Result for the Second Design	52
4.6.6	Comparison between the First and the Second design Parameters	52
4.6.7	Comparison between the RWSA second design and the simulation results biases on the Return Loss	53
4.6.8		
4.6.9	RWSA 2.4 GHz Simulations and Prototype (Second Design) Measurement Comparison	53
4.7	Radiation pattern measurements	54
4.8	RWSA antenna Gain Result over deferent Frequencies	56
4.9	Received Signal Strength Index	57
4.10	Summery	59



<b>V</b>	<b>CONCLUSION AND SUGGESTIONS FOR FUTURE WORK</b>	
	5.1 Conclusion	60
	5.2 Suggestions for Further Work	61
	<b>REFERENCES</b>	63
	<b>APPENDICES</b>	66

**LIST OF TABLES**

<b>TABLES</b>	<b>TITLE</b>	<b>PAGE</b>
2.1	802.11a vs. 802.11b vs. 802.11g	12
3.1	Initial calculation results based on 5.2 GHz antenna prototype	33
4.1	antenna parameters comparison for simulation and prototype for First design	47
4.2	RWSA 2.4 GHz simulation and prototype measurement comparison	49
4.3	antenna parameters comparison for simulation and prototype	51
4.4	antenna parameters comparison for 1st & 2nd design prototype	51
4.5	RWSA 2.4 GHz simulation and prototype measurement comparison	54

## LIST OF FIGURES

<b>FIGURES</b>	<b>TITLE</b>	<b>PAGE</b>
1.1	Flow chart representing a unified design of RWSA antenna	5
2.1. a	WLAN topology for ad-hoc mode	9
2.1. b	WLAN topology for infrastructure mode	9
2.2	A circular slot formed by a multiplicity of short linear slots	16
2.3	Annular slot aperture and space geometry	16
2.4	Radial waveguide slot waveguide array (a) double layered, (b) single layered	19
2.5	single layer RWSA with different feeds (a) probe feed, (b) recessed cavity feed	20
2.6	Schematic presentation of the single-layered linear-polarized RWSA antenna with its principal elements	21
2.7	Common slot geometry of linear-polarized RWSA antenna	22
2.8	equivalent electrical lumped-circuit model of slot in thin metallic plate	22
2.9	For the TEM two-plate guide	23

2.10	Ringed segment of radial line for its presentation by transmission line model	24
2.11	Equivalent transmission line model of slots' assembly in the radial guide forming RWSA antenna aperture like quasi-periodic radial structure	25
2.12	Equivalent electrical features of slotted radial line where quality factor Q as parameter above is determined by slot geometry namely	25
2.13	CP RWSA antenna proposed by Zagriatski and Bialkowski	27
3.1	R WSA antenna structure	30
3.2	The radiating surface of the RLSA antenna is formed by 4 discrete slots arranged at tangent of the array radius	31
3.3	RLSA antenna structure shorted probe (lower layout)	32
3.4	Insertion of coaxial monopole SMA connector into the slotted radial waveguide through the backing plate	32
3.5	Simulation domain in 3D outline view, which shows the antenna structure and the space boundaries	38
3.6	Object list to define the antenna structure	39
3.7	3D view of the antenna structure, built in FIDELITY. The structure is meshed into small rectangular cubes	40
3.8	Radiation pattern of the 2.4GHz RWSA antenna design	41
3.9	2.4GHz RWSA Antenna Radiation Pattern viewing from (a) z plane and (b) y plane	42

3.10	Return loss in case of polypropylene as radial waveguide cavity	43
3.11	Comparison between this design and previous design [33]	43
4.1	The R WSA antenna prototype structure	46
4.2	Return loss result for R WSA first design antenna prototype	48
4.3	Return loss result for R WSA second design antenna prototype	52
4.4	Comparison between the First and the Second design Parameters	52
4.5	Return loss result Comparison between the second design and the simulation results	53
4.6	direction of E-field, and the direction of H- field for the single slot	54
4.7	Rotating degree during the Radiation field pattern measurements at $0^{\circ}$ , $45^{\circ}$ , and $90^{\circ}$	54
4.8	Radiation Pattern at $0^{\circ}$	55
4.9	Radiation Pattern at $45^{\circ}$	55
4.10	Radiation Pattern at $90^{\circ}$	56
4.11	antenna gain under different frequencies	57
4.12	RSSI Comparison between RWSA antenna and RSSI of the monopole antenna using AirMagnet for a short distance	58
4.13	Comparison between the RSSI of the RWSA antenna and RSSI of the monopole antenna using AirMagnet for a Long distance	58

**LIST OF SYMBOLS**

2D	-	Two dimension
3D	-	Three dimension
$\epsilon_{\text{eff}}$	-	Effective dielectric constant
$\epsilon_0$	-	dielectric constant of free space
$\epsilon_r$	-	dielectric constant / permittivity
$\lambda$	-	wavelength
$\lambda_g$	-	guided wavelength
$\lambda_0$	-	free space wavelength
$\mu_0$	-	Permeability of free space
c	-	velocity of light
D	-	directivity
dB	-	decible
f	-	Frequency
b	-	Radial Cavity Hight
IL	-	Insertion Loss
L	-	Inductance
$P_i$	-	Incident Power
$P_{\text{max}}$	-	Peak handling Capacity
$P_r$	-	Reflected Power
$P_t$	-	Transmitted Power
R	-	Resistance
RL	-	Return Loss
TEM	-	Transverse Electromagnetic
V	-	Voltage

$\rho_a$	-	Slot Array Radius
$\rho_{sc}$	-	Short circuit distance
$\rho_w$	-	waveguide radius
$L_s$	-	slot length
$w_s$	-	slot width
$Z_0$	-	chaacteristics impedance

**LIST OF APPENDICES**

<b>APPENDIX</b>	<b>TITLE</b>	<b>PAGE</b>
A	Antenna Prototype Dimensions	65
B	Antenna Measurement Setup	69
C	RSSI SETUP	70
D	Matlab Code for Radiation Pattern Graphs	71



# CHAPTER I

## INTRODUCTION

### 1.1 Introduction

Antenna designers are always searching for ways to improve existing designs or introduce novel designs in order to achieve desirable radiation characteristics, reduce the size and weight, which are mandatory requirement for antennas used in WLAN and thus make antennas more cost efficient [1].

Return loss, axial ratio, gain, bandwidth and received signal strength are some of the important properties which are improved.

The recent explosion in information technology and wireless communications has created many opportunities for enhancing the performance of existing signal transmission. An indispensable element of any wireless communication system is the antenna. Transmission of data at higher rates requires adequate bandwidth for the elements constituting a communication link accordant to IEEE802.11b/g standard which well-handled in this project [2].

For WLAN applications, where problems such as multi-path fading due to reflections from various scatters occur, a linearly polarized RWSA antenna is a preferable option. The reason is that this polarization enhances overall system diversity and permits freedom of orientation for the user-end antenna [3].

Radial waveguide slot array Antennas (RWSA) is very attractive for applications in communication devices for wireless local area network (WLAN) systems in the 2.4 GHz (2400–2484MHz), the free Industry-Scientific-Medicine (ISM) frequency band [4]. Work investigated on development of the low profile unidirectional Radial Waveguide Slot Array Antenna as a potential alternative to the WLAN AP antenna.

## **1.2 Problem Statement**

The problem statement of this project is stated in the follow: WLAN users often complain of poor signal coverage. Therefore, an antenna with High gain and directivity suitable for indoor and outdoor WLAN in 2.4GHz ISM band is required, other point is the importance of obtaining a satisfactory coverage can not be over emphasized.

Theoretical results are obtained to satisfy good return loss requirements and specific radiation pattern shapes for the RWSA antenna, but the practical result is still big challenge to be veriflicated and prove that down-to-earth.

## **1.3 Objective**

The proposed project proposes a development of the low power profile for a unidirectional antenna depending on Radial Waveguide Slot Array Antenna (RWSA), which is attractive for point-to-multipoint point communications, linear polarized small RWSA antenna as an external antenna for access point of WLAN based on IEEE 802.11b/g standard, and the simulation design will done according to the Federal Communication Commission (FCC) regulations, by depending on the simulation results prototype will be doe and tested in Lab, and test bed as a field trial.

## **1.4 Research Scope**

The Research introduces:

1. WLAN protocols such as IEEE 802.11a/b/g free ISM band for which RWSA antennas are aimed to be designed.
2. The antenna specifications include parameters such as frequency, bandwidth, polarization, gain and all theoretical investigations.
3. Following that the simulation tools for antenna design based on Zeland Fidelity, FDTD, with Full-3D EM Simulation for the radiation pattern will be introduced.
4. Using of the linear polarization to improve the antenna gain.
5. Simulation of the Radiation pattern until reach the best result, and compare with previous design in field pattern and return loss result.
6. simulation result should be proven for indoor WLAN then outdoor WLAN
7. The prototype will be produced based on the simulation to involve the design and development of the low profile antenna; it will be tested in Lab and test bed as a field trial to measure the antenna performance.
8. Comparison of measured prototype with simulation.
9. Report / Thesis writing.

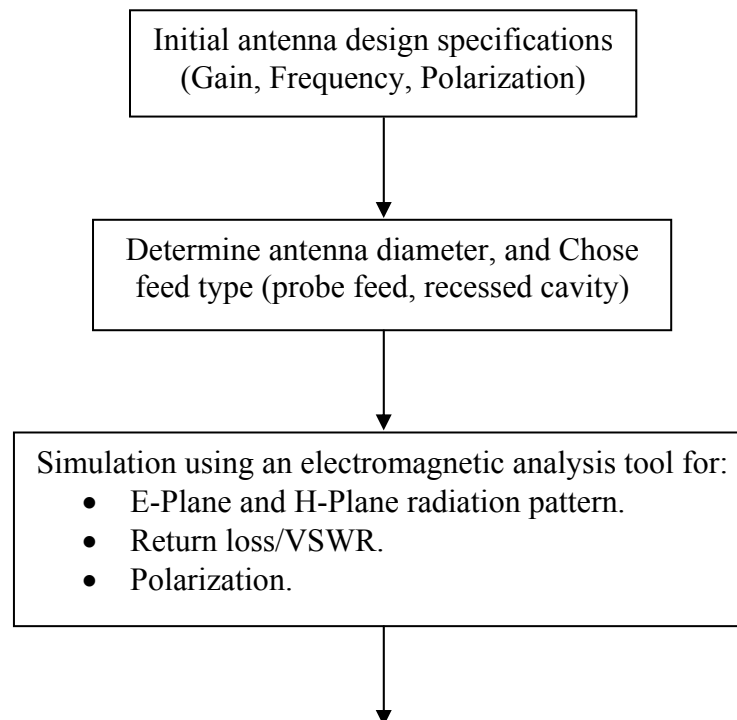
## **1.5 Research Methodology**

A reactive theoretical and experimental design approach was utilized to optimize the antenna structure, the strategy implemented for simplifying the design and development procedures in this research work can be divided into the following points:

1. initial concept
  - literature review
  - problem statement
  - design conceptual understanding

2. Design and simulation stage
  - Slot pattern design and desired radiation pattern and polarization.
  - Antenna input impedance.
  - Compare between this design and previous design.
3. Prototype stage
  - Antenna fabrication.
4. Measurement stage.
  - Radiation pattern.
  - Return loss.
5. Analysis stage.
  - Comparison between the measurements and the simulation results.

The antenna fabrication needs to fit within the costing constraints and the availability of materials. The design and development procedures are briefly summarized in the following chart Figure 1.1 in particular, this methodology provides an approximate chronological progress of the work performed to finally complete the full design cycle.



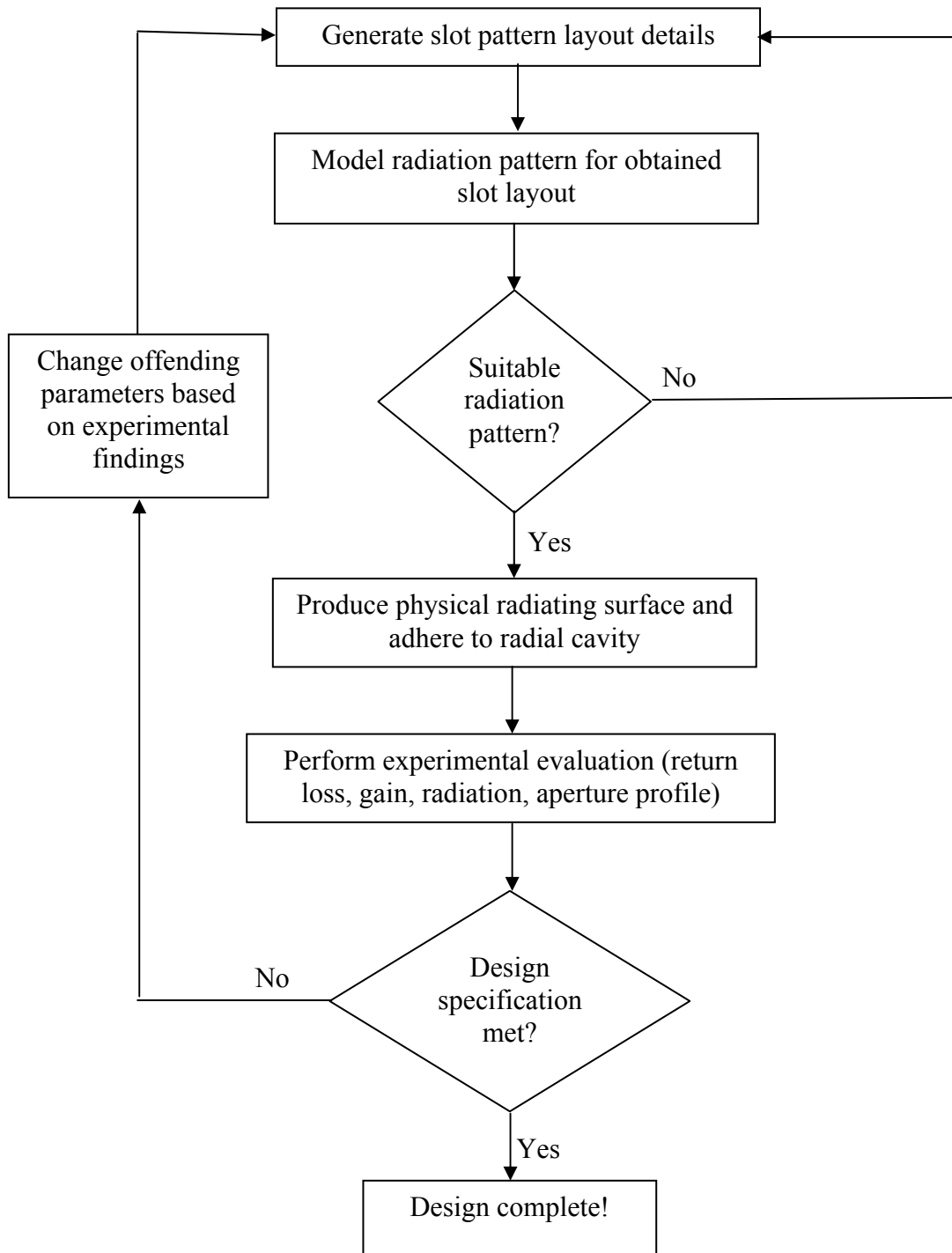


Figure 1.1: Flow chart representing a unified design of RWSA antenna.

## 1.6 Thesis Outline

Chapter 1: Consists of introduction of the project. Brief General Background is presented. The objectives of the project are clearly phased with detailed. The research scope and methodology background are also presented.

Chapter 2: Includes section1 of the literature review, introduction to the wireless communication, begins with an overview of indoor and outdoor contents then IEEE standard. Radial Waveguide slot array antenna evaluation and general description to the profile structure characteristics and its type also presented with theory background, historical development.

Chapter 3: Design and simulation modeling for the antenna, provides descriptions of the initial calculation results of the model and techniques for the finite difference time domain, design and simulation results, compare the result with the previous design.

Chapter 4: Presents the results of antenna prototype measurements and apply the antenna in the real environment, starting with the indoor application then applied the RWSA antenna outdoor.

Chapter 5: Concludes the thesis. The conclusion is given based on the analysis of results from the previous chapter and suggestion for future research.