

BEHAVIOUR OF PINNED BEAM-TO-COLUMN CONNECTIONS FOR
PRECAST CONCRETE FRAMES

DENNIS CHAN PAUL LEONG

A project report submitted in partial fulfillment of
the requirements for the award of the degree of
Master of Engineering (Civil - Structure)

Faculty of Civil Engineering
Universiti Teknologi Malaysia

OCTOBER, 2006

To my beloved parents and family

ACKNOWLEDGEMENT

I would like to express my greatest appreciation to my supervisor, Assoc. Prof. Dr. Ahmad Baharuddin Abd. Rahman, for his generous guidance, advice and motivation throughout this research.

A special thank dedicated to my beloved parents and family, for their continuing financial and morale supports throughout my studies. Finally, my sincere appreciation also extends to all my friends, the structural laboratory personnel, those who were directly or indirectly involved in the process of producing this research report, for their generous assistance, useful views and tips.

Without their support and contribution, this research project would not have been possible.

ABSTRACT

The connection design plays a vital role in determining the successful of the precast concrete structure. The detailing and structural behaviour of the connection such as beam-to-column connections will affect the strength, stability and constructability as well as load distribution of the structure under load. However, lack of experimental data and analytical proof accounts for the ductile connection details for beam-to-column connections are major problems in precast concrete structure. Reliable connection behaviour can only be properly assessed by laboratory testing or proven performance. Therefore, in this research project, laboratory testing was conducted to determine the moment of resistance of beam-to-column connections and to study the behaviour of beam-to-column connections in precast concrete frames. This research project involved a total of four specimens which was limited to simple beam-to-column connections in precast concrete frames. At the end of research, it is found that the performance of precast concrete simple beam-to-column connection had been improved using top fixing angle cleats. Furthermore, ductility of connection was not significantly reduced after this modification.

ABSTRAK

Rekabentuk sambungan rasuk-tiang merupakan suatu elemen yang mustahak dan tidak boleh diabaikan dalam struktur konkrit pratuang. Perincian serta sifat sambungannya akan menentukan kekuatan, kestabilan, kebolehinaan serta agihan beban keseluruhan struktur. Namun, kekurangan data dan analisis tentang sambungan rasuk-tiang dalam struktur konkrit pratuang masih merupakan suatu cabaran dan masalah. Sifat-sifat sambungan hanya boleh dinilai sepenuhnya melalui ujian-ujian makmal yang terkawal. Justeru, kajian ini telah dijalankan menerusi ujian makmal untuk menentukan rintangan momen and sifat-sifat sambungan rasuk-tiang dalam struktur konkrit pratuang. Walau bagaimanapun, kajian ini hanya memberi tumpuan terhadap jenis sambungan mudah dan melibatkan empat spesimen sahaja. Pada akhir kajian, didapati bahawa sambungan mudah rasuk-tiang yang menggunakan “*top fixing angle cleat*” telah memberikan prestasi yang baik. Di samping itu, sifat kemuluran sambungan didapati tidak banyak berubah selepas perubahan tersebut.

CONTENTS

CHAPTER	SUBJECT	PAGE
	THESIS TITLE	i
	DECLARATION	ii
	DEDICATION	iii
	ACKNOWLEDGEMENT	iv
	ABSTRACT	v
	ABSTRAK	vi
	CONTENTS	vii
	LIST OF TABLES	xi
	LIST OF FIGURES	xii
	LIST OF SHORTFORMS	xv
	LIST OF APPENDICES	xvii
CHAPTER I	INTRODUCTION	1
	1.1 Introduction	1
	1.2 Statement of Problem	2
	1.3 Objective of Study	3
	1.4 Scope of Study	4
	1.5 Importance of Study	4

CHAPTER II	LITERATURE REVIEW	6
2.1	Introduction	6
2.2	Connections and Joints	7
2.2.1	Hybrid Connection	8
2.3	Types of Beam-to-Column Connection in Precast Concrete Structures	9
2.3.1	Simple Connections	9
2.3.1.1	Beam Supported on Corbels	9
2.3.1.2	Beam Supported on Haunched Column	12
2.3.1.3	Beam Supported on Column Head	13
2.4	Corbel	14
2.4.1	Strut and Tie Model	16
2.4.2	Failure Mechanisms of Corbel	17
2.5	Mechanism of Bond Transfer	19
2.6	Load-displacement Relationships	20
2.7	Moment-rotation Relationships	21
CHAPTER III	RESEARCH METHODOLOGY	24
3.1	Introduction	24
3.2	Research Design and Procedure	25
3.3	Materials Used to Form the Specimens	36
3.3.1	Concrete	36
3.3.2	Reinforcement	37
3.3.3	Formwork	37
3.3.4	Steel Connectors	38
3.3.5	Grout	38
3.4	Test Setup	39

CHAPTER IV	RESULT AND ANALYSIS	41
4.1	Introduction	41
4.1.1	Moment-rotation Calculation Methods	42
4.2	Specimen 1	44
4.2.1	Load-displacement Relationship	44
4.2.2	Moment-rotation Relationship	46
4.2.3	Failure Mechanisms	46
4.3	Specimen 2	48
4.3.1	Load-displacement Relationship	48
4.3.2	Moment-rotation Relationship	50
4.3.3	Failure Mechanisms	51
4.4	Specimen 3	53
4.4.1	Load-displacement Relationship	53
4.4.2	Moment-rotation Relationship	55
4.4.3	Failure Mechanisms	56
4.5	Specimen 4	58
4.5.1	Load-displacement Relationship	58
4.5.2	Moment-rotation Relationship	60
4.5.3	Failure Mechanisms	62
CHAPTER V	DISCUSSION	63
5.1	Introduction	63
5.2	Load-displacement Relationship	63
5.3	Moment-rotation Relationship	69
5.4	Failure Mode	75
5.5	The Effects of Bearing Pad	77

CHAPTER VI	CONCLUSION	81
6.1	Introduction	81
6.2	Conclusion	82
6.3	Suggestion for Future Study	83
	REFERENCE	85
	APPENDIX	88

LIST OF TABLES

TABLE NO.	TITLE	PAGE
5.1	Load resistances of specimens.	67
5.2	Maximum displacements of specimens at first stage.	67
5.3	Maximum displacements of specimens at final stage.	67
5.4	Moment capacities of specimens.	73
5.5	Maximum relative rotations of specimens at first stage.	73
5.6	Maximum relative rotations of specimens at final stage.	73
5.7	Summary of failure for each specimen.	75
5.8	Comparison of load resistance.	80
5.9	Comparison of moment resistance.	80

LIST OF FIGURES

FIGURE NO.	TITLE`	PAGE
1.1	The application of simple beam-to-column connections in precast concrete skeletal frame.	5
1.2	Proposed hybrid beam-to-column connection in precast concrete frame.	5
2.1	Beam supported on corbel with dowel bar (Richardson, 1991).	10
2.2	Connection BC-2 (Walker, 1973).	11
2.3	Connection FS3 (Bruggeling and Huyghe, 1991)	11
2.4	Connection BC-1 (Walker, 1973).	12
2.5	Connection BC-3 (Walker, 1973).	13
2.6	Connection BC-5 (Walker, 1973).	14
2.7	Design information of corbels (Reynolds and Steedman, 1988).	15
2.8	Shear force transfer between beam and column through half-joint and corbel (Elliot, 1996).	15
2.9	Forces acting on bar (Macgregor, 1992).	17
2.10	Failure mechanisms in corbels. (a) Flexural tension. (b) Diagonal Splitting (c) Sliding shear. (d) Anchorage splitting. (e) Crushing due to bearing. (f) Horizontal tension. (Park and Paulay, 1975)	18
2.11	Failures of corbels due to poor detailing (Macgregor, 1992).	19

2.12	Bond transfer mechanism (Macgregor, 1992).	20
2.13	Typical load–displacement curve (Park and Paulay, 1975).	21
2.14	Typical moment-rotation curve (Park and Paulay, 1975).	22
2.15	Connection failing in compression (Park and Paulay, 1975).	23
2.16	Moment-rotation curve (Park and Paulay, 1975).	23
3.1	Geometry and dimension of precast beam-to-column connection.	26
3.2	Detailing of specimen 1.	27
3.3	Isometric view of unconnected specimen 1.	27
3.4	Isometric view of connected specimen 1.	28
3.5	Detailing of specimen 2.	28
3.6	Isometric view of unconnected specimen 2.	29
3.7	Isometric view of connected specimen 2.	29
3.8	Detailing of specimen 3.	30
3.9	Isometric view of unconnected specimen 3.	30
3.10	Isometric view of connected specimen 3.	31
3.11	Detailing of specimen 4.	31
3.12	Isometric view of unconnected specimen 4.	32
3.13	Isometric view of connected specimen 4.	32
3.14	Plate detail of specimen 2, specimen 3 and specimen 4.	33
3.15	Angle detail of specimen 2.	33
3.16	Stiffened angle detail of specimen 3.	34
3.17	Stiffened angle detail of specimen 4.	34
3.18	Bolt and nut details of specimen 2, specimen 3 and specimen 4.	35
3.19	Dowel bar details.	35
3.20	Typical experimental setup.	40
4.1	Location of testing equipment.	42
4.2	Typical moment-rotation calculation method.	43
4.3	Load-displacement curves of specimen 1.	45
4.4	The vertical displacements of specimen 1.	45

4.5	Moment-rotation curves of specimen 1.	47
4.6	Failure mode of specimen 1.	47
4.7	Load-displacement curves of specimen 2.	49
4.8	The vertical displacements of specimen 2.	49
4.9	Moment-rotation curves of specimen 2.	52
4.10	Failure mode of specimen 2.	52
4.11	Load-displacement curves of specimen 3.	54
4.12	The vertical displacements of specimen 3.	54
4.13	Moment-rotation curves of specimen 3.	57
4.14	Failure mode of specimen 3.	57
4.15	Load-displacement curves of specimen 4.	59
4.16	The vertical displacements of specimen 4.	59
4.17	Moment-rotation curves of specimen 4.	61
4.18	Failure mode of specimen 4.	61
5.1	Load-displacement curves at Point 1.	64
5.2	Load-displacement curves at Point 2.	64
5.3	Load-displacement curves at Point 3.	65
5.4	Load-displacement curves at Point 4.	65
5.5	Load-displacement curves at Point 5.	66
5.6	Moment-relative (3-1) rotation curves.	70
5.7	Moment-relative (4-1) rotation curves.	70
5.8	Moment-relative (5-1) rotation curves.	71
5.9	Moment-relative (3-2) rotation curves.	71
5.10	Moment-relative (4-2) rotation curves.	72
5.11	Moment-relative (5-2) rotation curves.	72
5.12	Failure mechanism at connection part of precast beam.	76
5.13	Rotation of precast beam supported by 10 mm thick bearing pad.	77
5.14	Rotation of precast beam supported by thinner and wider bearing pad.	78
5.15	The typical shifted moment-rotation curves.	79
6.1	Provision of extra shear reinforcement.	84

LIST OF SHORTFORMS

%	- percentage
°	- degree
A_s	- area of tension steel reinforcement
a_v	- level arm distance to shear force
b	- breadth of section
d	- effective depth of section to tension steel
F	- force
f_{cu}	- characteristic compressive strength of concrete
f_y	- ultimate yield stress of steel
h	- depth of section
k	- depth at outer edge of corbel
kg	- kilograms
kN	- kilo Newton
kNm	- kilo Newton meter
m	- meter
M	- bending moment
m^3	- meter cubes
milirad	- miliradian
mm	- millimeter
N/mm^2	- Newton per millimeter square
N_u	- horizontal force
Φ	- rotation
rad	- radian
V	- shear force
v	- shear stress

v_c	- design concrete shear stress
V_u	- gravity load
z	- lever arm
Z	- section modulus of dowel
δ	- deflection
Δu	- ultimate deflection
Δy	- initial yield deflection
μm	- micrometer
Φ_u	- ultimate rotation
Φ_y	- initial yield rotation
\tan	- tangent
π	- “pi”, mathematical constant equal to 3.141592654

LIST OF APPENDICES

APPENDIX	TITLE	PAGE
A	Concrete mix design form.	88
B	Materials used to form the specimens.	89
B1	Drying of coarse and fine aggregates.	89
B2	Cubes test.	89
B3	Steel reinforcement preparations.	90
B4	Formwork preparations.	91
B5	Connectors.	91
B6	Cubes test of grout.	92
C1	Load-displacement data of specimen 1.	93
C2	Moment-rotation data of specimen 1.	95
D1	Load-displacement data of specimen 2.	102
D2	Moment-rotation data of specimen 2.	104
E1	Load-displacement data of specimen 3.	115
E2	Moment-rotation data of specimen 3.	117
F1	Load-displacement data of specimen 4.	125
F2	Moment-rotation data of specimen 4.	128
G	Specimen design.	142
H	Experimental moment-rotation curve.	147

CHAPTER I

INTRODUCTION

1.1 Introduction

Precast concrete construction have been getting popular and being widely applied in construction sector today. The rapid growth of the building industry together with increasing demand for quality buildings necessitates the construction industry to continuously seek for improvement, leading to industrialization in this industry. Cost reduction is achieved through lesser construction time and amount of labour (Farah *et al.*, 2004).

The history of precast concrete dates back to few decades ago in which several factors such as rising steel costs, material shortages during the Korean conflict, the expanded highway construction program, and the development of mass production methods to minimize labor costs have all been factors leading to the use of precast concrete in United States (Sheppard and Philips, 1989).

The first precast concrete skeletal frame in United Kingdom was Weaver's Mill in Swansea which was constructed in 1897-98 (Elliot, 1996). Meanwhile,

precast concrete was first introduced in Malaysia in 1964 with the construction of flat houses at the intersection of Jalan Pekeliling and Jalan Pahang, located opposite General Hospital Kuala Lumpur. The second project was 6 blocks of 17-storey flat and 3 blocks of 18-storey flat, 66 units shop houses at Jalan Riffle Range, Pulau Pinang (Zubir, 2004).

The significance of precast structures has gained further recognition through the launching of Industrialized Building System (IBS) in Malaysia. To date, precast concrete components in our country is supplied by several companies such as Associated Structural Concrete Sdn. Bhd. (ACPI), Hume Concrete Marketing Sdn. Bhd., IJM Building System Sdn. Bhd., Setia Precast Sdn. Bhd., Sunway Precast Industries Sdn. Bhd., Eastern Pretech (M) Sdn. Bhd., Baktian Sdn. Bhd., Zenbes Sdn. Bhd., Integrated Brickworks Sdn. Bhd., Multi Usage (Holding) Sdn. Bhd. and PJD Concrete Sdn. Bhd. (CIDB, 2004).

1.2 Statement of Problem

Many types of beam-to-column connections have been developed to join precast beam elements to column elements. Twenty five typical precast beam-to-column connections details have been recommended by the Prestressed Concrete Institute (PCI) were based on simplicity, durability and construction tolerance rather than strength and stiffness. However, all these details indicate one or more of these disadvantages, such as slow erection, no reliable moment capacity, construction tolerance problem and expansive connection hardware (Seckin and Fu, 1990).

To remain competitive, precast structures must be erected quickly and with minimum site presence. The structural elements (columns, beams, floors and walls) must be erected simply and safely, through efficient connector design (Elliot, 2000).

Furthermore, the Institution of Structural Engineers (ISE) report mentions that a lack of appreciation of essential differences between precast concrete and in-situ has led to failure of joints and connections on the processes of manufacture and erection. Joints and connections in precast concrete and their influence on local and overall action of the structure, both during and after construction, have resulted in such failures (Richardson, 1991).

According to Elliot *et al.* (1998), some 24 tests have been conducted using welded plate and billet connectors, however, the concrete corbel and stiffened cleat types have not widely carried out. Although the Prestressed Concrete Institute (PCI) manuals contain descriptions of typical beam-to-column connections fulfilling many functions, the published test results are available for only a few of them (Loo and Yao, 1995).

Thus, the main statement of problem is as follows:

- Lack of experimental data and analytical proof accounts for the ductile connection details for beam-to-column connection in precast structure. In addition, reliable connection behaviour can only be properly assessed by laboratory testing or proven performance.

1.3 Objective of Study

The objectives of this study are as follows:

- i. To determine the moment of resistance of beam-to-column connections in precast concrete frames by laboratory testing.

- ii. To study the behaviour of beam-to-column connections in precast concrete frames by laboratory testing.

1.4 Scope of Study

The scope of this study is limited to simple beam-to-column connections in precast concrete frames. The precast beams, corbels and columns for this testing were designed using BS 8110:1997. According to BS 8110: Part 1: 1997 Clause 5.1.2, the recommended methods of design and detailing for reinforced concrete and prestressed concrete also applied to precast concrete. Apart from that, the connectors such as angles, plates and bolts were designed based on BS 5950: 2000. The testing consisted of four specimens. Each specimen contained of a beam 200 x 300 x 1000 mm, and was jointed with a supported corbel of 200 mm wide and 220 mm depth in a 200 x 200 x 2000 mm column. The concrete strength for all specimens was 40 N/mm² at 28 days. The testing was conducted to study the behaviour and performance of beam-to-column connections in precast concrete frames.

1.5 Importance of Study

The connection design plays a vital role in determining the successful of the precast concrete structure. The detailing and structural behaviour of the connection such as beam-to-column connections will affect the strength, stability and constructability as well as load distribution of the structure under load. In this research, laboratory testing was conducted to assess the behaviour and performance of the beam-to-column connections by studying load-displacement relationships,

moment-rotation relationships and types of failure in connections. Based on the results obtained, the use of the proposed connections with either precast concrete braced frame (with lateral stability systems such as shear walls) or unbraced frame (without lateral stability systems) can be studied. Furthermore, it is expected that the proposed connections can be utilized in future precast concrete construction, as shown in Figure 1.1 and Figure 1.2. Moreover, the formation of safe, economical and ductile precast beam-to-column connections conforming to building code requirements can be utilized.

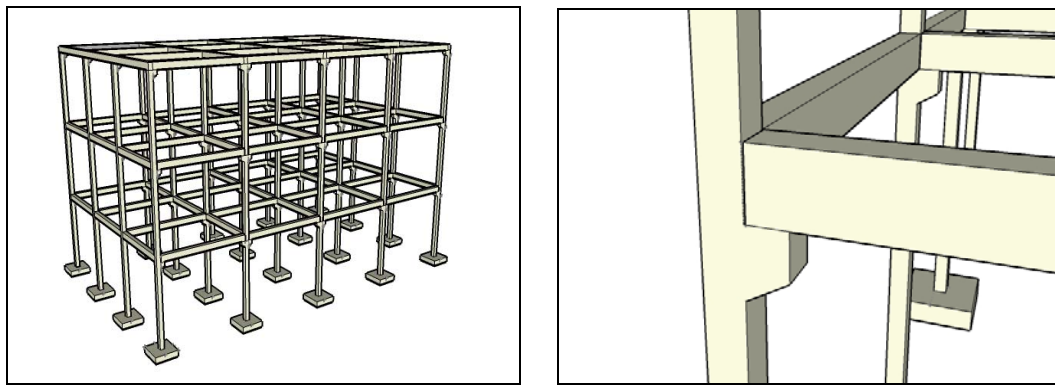


Figure 1.1: The application of simple beam-to-column connections in precast concrete skeletal frame.

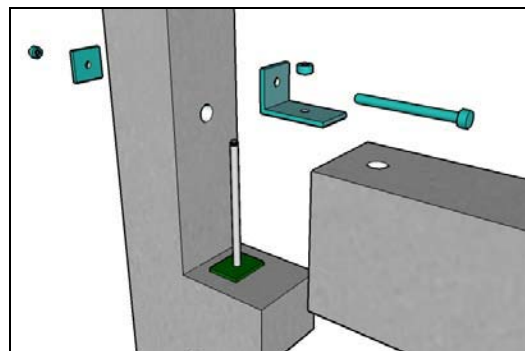


Figure 1.2: Proposed hybrid beam-to-column connection in precast concrete frame.

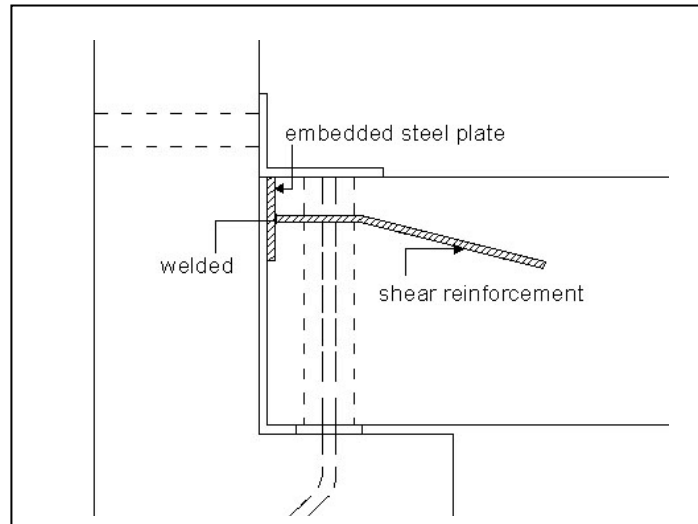


Figure 6.1: Provision of extra shear reinforcement.

REFERENCE

- Bruggeling A.S.G. and Huyghe G.F. (1991). "Prefabrication with Concrete."
Rotterdam: A.A. Balkema.
- CIDB (2004). "IBS Publication: Catalogue of Precast Concrete Components for
Building Works 2004/2005." Available: <http://www.cidb.gov.my/>
- Dolan C.W., Stanton J.F. and Anderson R.G.(1987). "Moment Resistance
Connections and Simple Connections." PCI Journal 1987, V32 No.2, 64-74.
- Dr. Che Wan Fadhil (2005). "Realising The Industrialization of Malaysia
Construction Industry- Construction It Perspective." IBS Digest. July-September
2005, 6.
- Elliot K.S, Davies G., Gorgun H., Mohammad Reza A. (1998). "The Stability of
Precast Concrete Skeletal Structures." PCI Journal 1998, V43 No.2, 42-61.
- Elliot K.S. (2000). "Research and Development in Precast Concrete Framed
Structures." Journal- Progress in Structural Engineering and Materials 2000: 2 ,
405-428.
- Elliot K.S.(1996). "Multi-Storey Precast Concrete Framed Structures." United
Kingdom: Blackwell Science Ltd.
- Farah Nora Aznieta Abd.Aziz, Abang Abdullah Abg. Ali, Mohd Saleh Jaafar, Abdul
Aziz Abd. Samad and D.N. Trikha (2004). "Ultimate Strength of Precast

Concrete Sandwich Panel with Opening Under Axial Load.” Journal- The Institution of Engineers, Malaysia, Vol.65, No.1/2, March/June 2004, 8.

FIP Commission on Prefabrication (1986). “Design of Multi-storey Precast Concrete Structures.” London: Thomas Telford Ltd.

Loo Y.C. and Yao B.Z.(1995). “Static and Repeated Load Tests on Precast Concrete Beam-to-Column Connections.” PCI Journal 1995, V40 No.2, 106-115.

Macgregor J.G. (1992). “Reinforced Concrete Mechanics and Design.” United State: Prentice-Hall.

Neville A.M. and Brooks J.J. (1987). “Concrete Technology.” England: Longman Group Ltd.

Ngui Yeang Ling (2004). “Behaviour of Beam-to-Column Connection in Precast Concrete Structure.” Universiti Teknologi Malaysia: Masters Thesis.

Park R. and Paulay T. (1975). “Reinforced Concrete Structures.” New York: John Wiley & Sons.

Reynolds C.E. and Steedman J.C. (1988). “Reinforced Concrete Designer’s Handbook.” London: Spon Press, Taylor & Francis Group.

Richardson J.G. (1991). “Quality in Precast Concrete”. New York : John Wiley & Sons.

Seckin M. and Fu H.C. (1990). “Beam-Column Connections in Precast Reinforced Concrete Construction.” ACI Structural Journal 1990, V87 No.3, 252-261.

Sheppard.D.A and Philips.W.R (1989). “Plant-Cast Precast & Prestressed Concrete.” United State: McGraw-Hill.

Walker H.C. (1973). "PCI on Design of Connection for Precast Prestressed Concrete." Chicago: Prestressed Concrete Institute.

Wynn A.E. (1956). "Design and Construction of Formwork for Concrete Structures." London: Concrete Publications Limited.

Zubir Bin Mohd Salleh (2004). "Sambungan Struktur Konkrit Pratuang". Universiti Teknologi Malaysia: First Degree Thesis.

Technical Data Sheet (2005). "SikagROUT 215- General Purpose Non-Shrink Cementitious Grout." Available:
<http://www.sikaindo.com/construction/pdf/sikaGrout215.pdf#search='sikagROUT%20215'>