

MATHEMATICAL MODELLING OF NON-NEWTONIAN BLOOD FLOW
THROUGH A TAPERED STENOTIC ARTERY

ZUHAILA BINTI ISMAIL

A dissertation submitted in partial fulfilment of the
requirements for the award of the degree of
Master of Science (Mathematics)

Faculty of Science
Universiti Teknologi Malaysia

MAY 2006

For My Dear Family

ACKNOWLEDGEMENT

First of all, thanks to Almighty Allah s.w.t. for graciously bestowing me the perseverance to undertake this research. I sincerely have to thank all those who have supported and helped me writing this report. A special thanks and a deepest appreciation to my supervisor, Prof Dr Norsarahaida S. Amin who provided guidance and advice. Dr P.K. Mandal of the Department of Mathematics, Visva-Bharati, West Bengal, India who assisted me with some materials for this dissertation.

A warmest gratitude to my family especially my parents, Pn. Hajjah Zaiton Mohd Yusof and Tuan Haji Ismail Mat Hanif for their constant encouragement and advice. Without their support, it would not have been possible for me to complete this project.

I also would like to thank my special friend, Nurul Anwar Abdul Aziz for his willingness to help me when I really need it. Finally, I wish to thank my friends especially Ilyani Abdullah, Norzieha Mustapha, Wan Rukaida Wan Abdullah, Siti Aisyah Zulkifli, Nur Ilyana Anwar Apandi, Norhafizah Md Sarif, Noor Zakiah Yahya for all the wonderful times we have had. I would not have lasted through the research without your encouragement and support.

ABSTRACT

A mathematical model of non-Newtonian blood flow through a tapered stenotic artery is considered. It has been established that the regional blood rheology is altered once a stenosis develops. A stenosis is defined as the partial occlusion of the blood vessels due to the accumulation of cholesterols and fats and the abnormal growth of tissue. The non-Newtonian model chosen is characterized by the generalized Power-Law model and the effect of tapering on the arterial segment is incorporated in the analysis due to the pulsatile nature of blood flow. The flow is assumed to be unsteady, laminar, two-dimensional and axisymmetric. The equations of motion in terms of the viscous shear stress in the cylindrical coordinate system are first derived and then transformed using the radial coordinate transformation before they are solved numerically using a finite difference scheme. Numerical results obtained show that the blood flow characteristics such as the velocity profiles, flow rate, and wall shear stress have lower values while the resistive impedances have higher values compared to the values obtained from the Newtonian model.

ABSTRAK

Model matematik bagi aliran darah tak Newtonan melalui arteri berstenosis yang menirus dipertimbangkan. Sifat semulajadi darah akan berubah di sekitar kawasan di mana terdapatnya stenosis, iaitu himpunan kolesterol dan lemak-lemak serta pertumbuhan tisu yang luar biasa pada dinding arteri. Model tak Newtonan yang dipilih bercirikan model '*Power-Law*', sementara kesan arteri yang menirus dan mengembang diambil kira di dalam analisis berdasarkan sifat semulajadi aliran darah yang bergantung kepada denyutan jantung. Aliran darah yang dipertimbangkan adalah aliran tak mantap dalam dua matra, lamina dan berpaksi simetri. Persamaan gerakan dalam sebutan tegasan ricih dalam koordinat silinder diterbit dan dijelmakan menggunakan jelmaan jejari koordinat. Persamaan ini diselesaikan secara berangka menggunakan kaedah beza terhingga. Keputusan berangka yang diperoleh menunjukkan ciri-ciri aliran darah seperti halaju, kadar aliran dan tegasan ricih mempunyai nilai yang lebih rendah manakala jumlah rintangan adalah lebih tinggi berbanding nilai yang diperoleh daripada model Newtonan.

CONTENTS

CHAPTER	SUBJECT	PAGE
	TITLE	i
	DECLARATION	ii
	DEDICATION	iii
	ACKNOWLEDGEMENT	iv
	ABTRACTS	v
	ABSTRAK	vi
	CONTENTS	vii
	LIST OF FIGURES	xi
	LIST OF SYMBOLS	xiii
	LIST OF TERMINOLOGY	xiv
I	INTRODUCTION	1
	1.1 Introduction	1
	1.2 Research Background	3
	1.3 Objectives of Research	6
	1.4 Scope of Research	7
	1.5 Significance of Study	7
	1.6 Outline of Dissertation	8
II	DERIVATION OF THE GOVERNING EQUATIONS	10
	2.1 Introduction	10

2.2	The Equation of Continuity	10
2.3	The Equations of Motion	15
2.3.1	x - Component of Momentum	15
2.3.2	y - Component of Momentum	19
2.3.3	z - Component of Momentum	22
2.3.4	The Power-law Model	26
2.4	The Governing Equations in Cylindrical Coordinates	29
2.5	Derivation of the Mathematical Model	33
2.6	The Boundary Conditions	34
2.6.1	The Pressure Gradient	35
III	THE GEOMETRY OF STENOSIS	36
3.1	Introduction	36
3.2	The Geometry of Stenosis	36
3.3	Formulation of the Geometry of Mild Stenosis in a non Tapered Artery	41
3.4	Formulation of the Geometry of Mild Stenosis in a Tapered Artery	44
IV	SOLUTION PROCEDURE	49
4.1	Introduction	49
4.2	Transformation of the Governing Equations using Radial Coordinate Transformation	49
4.2.1	Transformation of the z Momentum	50
4.2.2	Transformation of the Continuity Equation	52
4.2.3	Transformation of the Normal Stress (τ_{zz})	52
4.2.4	Transformation of the Shear Stress (τ_{xz})	53
4.2.5	Transformation of the Boundary Conditions	54
4.3	Derivation of the Radial Velocity Component, $v_r(x, z, t)$	54

4.4	Discretization of the Axial Velocity component, $v_z(x, z, t)$	58
4.5	Discretized Forms of Blood Flow Characteristics	61
4.6	The Numerical Procedure	64
4.7	Some Comments	65
V	NUMERICAL RESULTS AND DISCUSSION	69
5.1	Introduction	69
5.2	Effect of Tapering on Axial and Radial velocity	69
5.2.1	Different Taper Angle under Stenotic Conditions	69
5.2.2	Effect of Stenosis on Axial and Radial Velocity	71
5.3	Axial and Radial Velocity at Different Times	73
5.4	Axial and Radial Velocity at Different Axial Positions	75
5.5	Variation of Blood Flow Characteristics	77
5.5.1	Variation of the Rate of Flow with Time	77
5.5.2	Variation of the Resistance of Flow with Time	78
5.5.3	Variation of the Wall Shear Stress with Time	79
VI	CONCLUSION	81
6.1	Summary of Research	81
6.2	Suggestions for Future Research	83
	REFERENCES	84
	Appendix A	89
	Appendix B	95

LIST OF FIGURES

FIGURE NO.	TITLE	PAGE
1.1.1	Atherosclerosis	2
1.1.2	Stenosis that Exists in Coronary Artery Restricts Blood Flow to the Heart.	2
2.2.1	Region of Volume $\Delta x \Delta y \Delta z$ Fixed in Space through which a Fluid is Flowing.	11
2.3.1	Volume Element $\Delta x \Delta y \Delta z$ with Arrows Indicating the Direction in which the x -component of Momentum is Transported through the Surfaces.	15
2.4.1	Cylindrical Coordinates.	29
3.2.1	The Geometry of Mild Stenosis.	37
3.2.2	The Geometry of a Cosine-Shaped Stenosis.	38
3.2.3	The Geometry of Bell-Shaped Stenosis.	38
3.2.4	The Geometry of Two Overlapping Stenosis.	39
3.2.5	The Geometry of Three Overlapping Stenosis.	39
3.2.6	The Irregular Stenosis.	40
3.2.7	The Geometry of Multi-Mild Stenosis.	40
3.2.8	The Geometry of Multi-Irregular Stenosis.	41
3.2.9	The Smooth Profile used to Approximate Multi Irregular Stenosis.	41
3.3.1	The Geometry of Mild Stenosis in non-Tapered ($\phi = 0$) Artery.	42
3.4.1	The Geometry of Mild Stenosis in Tapered ($\phi > 0$) Artery.	44

3.4.2	The Geometry of Mild Stenosis for Different Angles of Tapering.	48
4.7.1	Radial Velocity Profile for $\phi = 0^\circ$	65
4.7.2	Axial Velocity Profile for $\phi = 0^\circ$	66
4.7.3	Variation of the Rate of Flow for $\phi = 0^\circ$	66
4.7.4	Variation of the Resistance for $\phi = 0^\circ$	67
4.7.5	Variation of the Wall Shear Stress for $\phi = 0^\circ$	67
5.2.1	Axial Velocity Profiles for Different Taper Angles at $t = 0.45\text{s}$.	70
5.2.2	Radial Velocity Profiles for Different Taper Angles at $t = 0.45\text{s}$.	71
5.2.3	Axial Velocity Profiles at $z = 28\text{mm}$ for $t = 0.45\text{s}$.	72
5.2.4	Radial Velocity Profiles at $z = 28\text{mm}$ for $t = 0.45\text{s}$.	73
5.3.1	Axial Velocity Profiles for Different Times at $z = 28\text{mm}$.	74
5.3.2	Radial Velocity Profiles for Different Times at $z = 28\text{mm}$.	75
5.4.1	Axial Velocity Profiles for Different Axial Positions at $t = 0.45\text{s}$.	76
5.4.2	Radial Velocity Profiles for Different Axial Positions at $t = 0.45\text{s}$.	77
5.5.1	Variation of the Rate of Flow with Time at $z = 28\text{mm}$.	78
5.5.2	Variation of the Resistance of Flow with Time at $z = 28\text{mm}$.	79
5.5.3	Variation of the Wall Shear Stress with Time at $z = 28\text{mm}$.	80

LIST OF SYMBOLS

$R(z, t)$	-	the radius of the tapered arterial segment in the stenotic region
a	-	the constant radius of the non-tapered artery in the non-stenotic region
ϕ	-	the angle of tapering
l_0	-	the length of the stenosis
d	-	the location of the stenosis
$\tau_m \sec \phi$	-	the critical height of the stenosis for the tapered artery appearing at $z = d + \frac{l_0}{2}$.
m	-	the slope of the tapered vessel
ω	-	the angular frequency
f_p	-	the pulse frequency
b	-	constant variable
L	-	the finite difference arterial segment
$\phi < 0$	-	the converging tapering
$\phi = 0$	-	the non-tapered artery
$\phi > 0$	-	the diverging tapering
τ_{rz}	-	shear stress
$v_z(r, z, t)$	-	the axial velocity component
$v_r(r, z, t)$	-	the radial velocity component
p	-	pressure
ρ	-	density of blood
λ	-	wavelength

$\frac{\partial p}{\partial z}$	-	pressure gradient
A_0	-	constant amplitude of the pressure gradient
A_1	-	amplitude of the pulsatile component
Δx	-	increment in the radial directions
Δz	-	increment in the axial directions
Δt	-	small time increment
Q	-	volumetric flow rate
\wedge	-	resistance
τ_w	-	wall shear stress
V	-	volume

LIST OF TERMINOLOGY

- Atherosclerosis - arteriosclerosis characterized by irregularly distributed lipid deposits in the intima of large and medium-sized arteries; such deposits provoke fibrosis and calcification. Atherosclerosis is set in motion when cells lining the arteries are damaged as a result of high blood pressure, smoking, toxic substances in the environment, and other agents. Plaques develop when high density lipoproteins accumulate at the site of arterial damage and platelets act to form a fibrous cap over this fatty core. Deposits impede or eventually shut off blood flow.
- Blood - the fluid and its suspended formed elements that are circulated through the heart, arteries, capillaries, and veins; blood is the means by which 1) oxygen and nutritive materials are transported to the tissues, and 2) carbon dioxide and various metabolic products are removed for excretion. The blood consists of a pale yellow or gray-yellow fluid, plasma, in which are suspended red blood cells (erythrocytes), white blood cells (leukocytes), and platelets.
- Cardiac arrest - complete cessation of cardiac activity either electric, mechanical, or both; may be purposely induced for therapeutic reasons.

- Cardiac cycle - the complete round of cardiac systole and diastole with the intervals between, commencing with any event in the heart's action and ending when same event is repeated.
- Cardiovascular - relating to the heart and the blood vessels or the circulation.
- Cerebrovascular - relating to the blood supply to the brain, particularly with reference to pathologic changes.
- Diastole - normal postsystolic dilation of the heart cavities, during which they fill with blood; diastole of the atria precedes that of the ventricles; diastole of either chamber alternates rhythmically with systole or contraction of that chamber.
- Diastolic - relating to diastole.
- Disease - an interruption, cessation, or disorder of body functions, systems, or organs.
- Elastic - having the property of returning to the original shape after being compressed, bent, or otherwise distorted or a rubber or plastic band used in orthodontics as either a primary or adjunctive source of force to move teeth. The term is generally modified by an adjective to describe the direction of the force or the location of the terminal connecting points.
- Erythrocyte - a mature red blood cell. Synonym: red blood cell, haemacyte, red corpuscle, hemacyte.
- Hemoglobin - the red respiratory protein of erythrocytes, consisting

of approximately 3.8% heme and 96.2% globin, with a molecular weight of 64,450, which as oxyhemoglobin (HbO_2) transports oxygen from the lungs to the tissues where the oxygen is readily released and HbO_2 becomes Hb. When Hb is exposed to certain chemicals, its normal respiratory function is blocked; e.g., the oxygen in HbO_2 is easily displaced by carbon monoxide, thereby resulting in the formation of fairly stable carboxyhemoglobin (HbCO), as in asphyxiation resulting from inhalation of exhaust fumes from gasoline engines. When the iron in Hb is oxidized from the ferrous to ferric state, as in poisoning with nitrates and certain other chemicals, a nonrespiratory compound, methemoglobin (MetHb), is formed.

- Hypertension - high blood pressure; generally established guidelines are values of more than 140 mmHg systolic, or more than 90 mmHg diastolic blood pressure. Despite many discrete and inherited but rare forms that have been identified, the evidence is that for the most part blood pressure is a multifactorial, perhaps galtonian trait.
- Laminar - arranged in plates or laminae.
- Laminar flow - the relative motion of elements of a fluid along smooth parallel paths, which occurs at lower values of Reynolds number.
- Stenosis - a stricture of any canal; especially, a narrowing of one of the cardiac valves.
- Stenotic - narrowed; affected with stenosis.

- Stress** - reactions of the body to forces of a deleterious nature, infections, and various abnormal states that tend to disturb its normal physiologic equilibrium (homeostasis) or psychological stimulus such as very high heat, public criticism, or another noxious agent or experience which, when impinging upon an individual, produces psychological strain or disequilibrium.
- Systole** - contraction of the heart, especially of the ventricles, by which the blood is driven through the aorta and pulmonary artery to traverse the systemic and pulmonary circulations, respectively; its occurrence is indicated physically by the first sound of the heart heard on auscultation, by the palpable apex beat, and by the arterial pulse.
- Systolic** - relating to, or occurring during cardiac systole.
- Vessel** - a structure conveying or containing a fluid, especially a liquid.
- Viscosity** - in general, the resistance to flow or alteration of shape by any substance as a result of molecular cohesion; most frequently applied to liquids as the resistance of a fluid to flow because of a shearing force.
- Viscous** - sticky; marked by high viscosity.

CHAPTER I

INTRODUCTION

1.1 Introduction

Heart problem is one of the most common causes of death. Angina pectoris and myocardial infarction are two examples of heart diseases. Angina pectoris is the term used to describe the pain cause when the vessel is not carrying enough blood to the heart muscle. The pain occurs especially when the heart muscle needs more blood. In the case of myocardial infarction or heart attack, part of the heart muscle is destroyed. This causes severe pain in the chest that can lead to death. A healthy person is not aware of having a heart, or the important work it does in making the body works properly. The heart is the strongest organ in the body, and it works like a pump. The heart is like an engine, which can wear out, and breaks down completely, this is called cardiac arrest. Actually how likely someone is to have a heart attack depends on a number of things. The main cause that leads to a heart attack is atherosclerosis (see Figure 1.1.1).

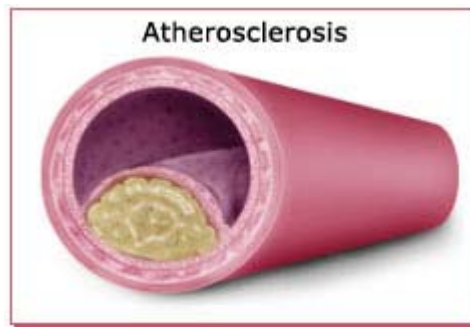


Figure 1.1.1 Atherosclerosis

Chakravarty (1987) mentioned that atherosclerosis occurs when the nature of blood flow changes from its usual state to a disturbed flow condition due to the presence of a stenosis in an artery. Stenosis is defined as a partial occlusion of the vessels caused by abnormal growth of tissues or the deposition of cholesterol as substances on the arterial wall. This research considers the study of blood flow through arteries in the presence of stenosis because it can cause the development of cardiovascular diseases such as stroke and heart attack (see Figure 1.1.2).

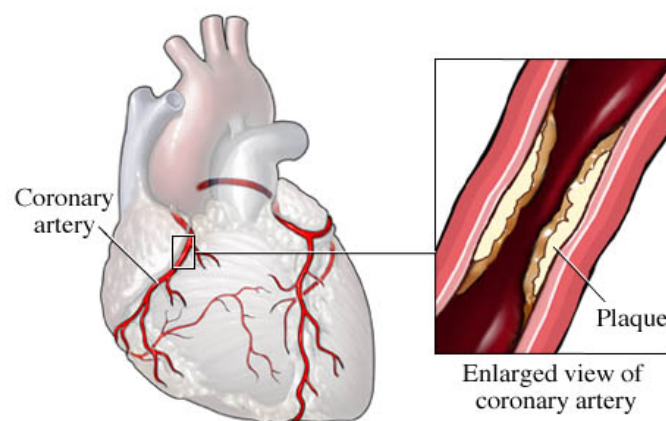


Figure 1.1.2 Stenosis that Exists in Coronary Artery
Restricts Blood Flow to the Heart.

The fact that blood exhibits non – Newtonian behaviour was actually first recognised around the turn of the century (Enderle et al. (2000)). From a biofluid mechanics point of view, blood would not be expected to obey the very simple, one parameter, and linearized law of viscosity as developed by Newton. Blood is

nonhomogeneous, anisotropic ionic, composite fluid composed of a suspension of many asymmetric, relatively large, viscoelastic particles carried in a liquid that contains high molecular weight, asymmetric, ionic that behaves in a complicated way under shear – type loading. Therefore, blood exhibits non-Newtonian (nonlinear), time dependent (viscoelastic) deformation (flow) characteristics that can only be modelled by higher order constitutive equations, such as the power-law paradigm (Enderle et al. (2000)).

In physiological flows, there are other important factors that can be accounted for such as the effects of vessel tapering together with the geometry of stenosis. It has been pointed out that most of the vessels could be considered as long and narrow, slowly tapering cones. Besides, the process of systolic and diastolic also affects the vessels segment because it makes the vessel segment converges and diverges. Thus the effects of vessel tapering together with the non-Newtonian behaviour of the streaming blood seem to be equally important, hence deserves special attention.

In the next sections, we present the research background for the project followed by the objectives, scope, significance of research and outline of the dissertation.

1.2 Research Background

A number of researchers have studied the flow of non-Newtonian fluids with various perspectives. Ronald L. Fournier (1998) explained about the field of rheology concerns the deformation and flow behaviour of fluids, the prefix *rheo* is from Greek and refers to something that flows because of the particulate nature of blood. He expected the rheological behaviour of blood to be some what more complex than a simple fluid such as water. He mentioned that in order to understand the flow behaviour of blood, one must first define the relationship between shear stress and the shear rate. Ishikawa et al. (1998) found that the non-Newtonian

pulsatile flow through a stenosed tube is different from Newtonian flow. The non-Newtonian property strengthens the peaks of wall shear stress and wall pressure, weakens the strength of the vortex and reduces the vortex size and separated region. Therefore, he concluded that non-Newtonian flow is more stable than Newtonian flow.

Chakravarty and Mandal (1994) studied the unsteady flow behaviour of blood in an artery under stenotic condition analytically, by considering blood to be a non-Newtonian fluid and by properly accounting for blood viscoelasticity while the geometry of the stenosis was chosen to be overlapping to some extent, depending on time. Chakravarty et al. (1996) investigated the effect of a single cycle of body acceleration on unsteady non-Newtonian blood flow past a time-dependent arterial stenosis. Mandal (2005) pointed out that in some disease conditions, for example, patients with severe myocardial infarction, cerebrovascular diseases and hypertension, blood exhibits non-Newtonian properties. Gijsen et al. (1999) studied the impact of non-Newtonian properties of blood on the velocity distribution. They made a comparison between the non-Newtonian fluid model and a Newtonian fluid at different Reynolds numbers. Comparison reveals that the character of flow of the non-Newtonian fluid is simulated quite well by using the appropriate Reynolds number. Cheng Tu and Michel Deville (1995) noticed that for non-Newtonian flow through 75% stenosis, the influence of the geometrical disturbance affects the flow over a longer axial range.

John Enderle et al. (2000) pointed out those significant attempts to define such non-Newtonian behaviour, however did not appear until the 1960s, when variable-shear rotational viscometers were introduced. Since then, literally dozens of constitutive models have been proposed that attempt to relate shear stress to shear rate in the fluid. They said, the most practical of these is an empirical power law formulation that generalizes Newton's law of viscosity. R. Manica and A.L. de Bortoli (2003) presented the simulation of incompressible non-Newtonian flow through channels with sudden expansion using the Power Law model. The Power Law model is applied to predict pseudoplastic (shear thinning) and dilatant (shear thickening) behaviour in such expansions. They pointed out that a better understanding of non-Newtonian flow through sudden expansions should lead to

both the design and development of hydrodynamically more efficient process and to an improved quality control of the final products.

The effect of vessel tapering is another important factor that should be considered. Chakravarty and Mandal (2000) formulated the problem on tapered blood vessel segment having overlapping stenosis. The problem is modelled mathematically as a thin elastic tube with a circular section containing an incompressible Newtonian fluid representing blood. Jeffords and Knisley (1956) and Bloch (1962) pointed out that most of the vessels could be considered as long and narrow, slowly tapering cones (Chakravarty and Mandal (2000)).

Inside a normal artery, red and white blood cells and other particles can flow freely to the peripheral organs. The walls of the inner linings of arteries are smooth and uniform in thickness. As an initial study, Formaggia et al. (2003) and Lee and Xu (2002) observed blood flow behaviour in non-stenotic vessel or a normal artery. Over time, however, the stenosis can build up within the artery walls. Quite a good number of theoretical studies related to blood flow through stenosed arteries have been carried out recently, Misra and Chakravarty (1989), Chakravarty (1987) and Chakravarty and Datta (1987). Most of the studies carried out so far have been focused on the presence of mild or single stenosis as discussed by Chakravarty et al. (1995, 1996, 2000), Chakravarty and Mandal (1997, 2000), Taylor et al. (1998), Lee and Xu (2002) and Mandal (2005). Moayeri and Zendehtboodi (2003) found that once a mild stenosis is developed, the resulting flow disorder plays an important role in the further development of the disease.

In order to update resemblance to the *in vivo* situation, some studies have been investigated an overlapping stenosis in blood vessel segment subject to the pulsatile pressure gradient. Chakravarty and Mandal (1996), noted that the problem becomes more acute in the presence of an overlapping stenosis in the artery instead of having a mild stenosis as considered by aforesaid researchers. The study has been extended by Chakravarty and Mandal (2000) to include the time-dependent geometry of an overlapping stenosis present in a tapered artery. However, these studies considered a Newtonian model for blood flow. Beside the mild and overlapping

stenosis, Chakravarty and Sannigrahi (1999) gave special attention to multistenoses which appear in the artery.

There are different methods of solution in solving the problem of blood flow in normal and stenosed artery. Some researchers are solving analytically and some of them use numerical methods. Gerrald and Taylor (1977) used the finite difference method to solve the problem of blood flow in a normal artery. The finite difference method based on the central difference approximation has been employed by Chakravarty and Mandal (1994, 1997) and Mandal (2005). Misra and Pal (1999) observed the blood motion using Crank Nicolson implicit finite difference method. Runge-Kutta formula has been used by Chakravarty and Mandal (1996, 2000), Chakravarty et al. (1995, 1996, 2000) and Chakravarty and Sannigrahi (1999).

Beside the finite difference scheme, the finite element method has also been employed. Sud and Sekhon (1986) used the finite element model of flow in the normal branched arterial system subject to externally imposed periodic body acceleration and the relevance works have been extended by Sud and Sekhon (1987) by considering a stenosed artery. Formaggia et. al. (2003) presented a finite element Taylor-Galerkin scheme combined with operator splitting techniques in order to carry out several test cases.

1.3 Objectives of Research

The main objective of this research is to develop a mathematical model for non-Newtonian blood flow through a tapered stenotic artery.

The specific objectives are:

1. To derive the governing equations of blood flow, comprising the equation of continuity and the equation of motion in terms of the viscous shear stress.

2. To formulate the geometry of mild stenosis.
3. To carry out the radial coordinate transformation on the governing equations.
4. To solve the governing equations numerically using a finite difference scheme.

1.4 Scope of Research

This research takes into consideration the stenotic blood flow through the tapered artery to be incompressible, unsteady, two-dimensional and axisymmetric under laminar flow condition. The flowing blood is treated as a non-Newtonian fluid that is characterized by the generalized Power-law model and is observed through a mild stenosis. The discussion of this problem follows from the work of (Mandal (2005)).

1.5 Significance of Study

The benefits of this study are:

1. The development of a more realistic mathematical model to describe blood flow.
2. The development of a numerical package for the computation and simulation of bio-fluid problems.

1.6 Outline of Dissertation

This dissertation is divided into six chapters including this introductory chapter. Section 1.2 – 1.5 present the research background, objectives, scope and significance of research.

Chapter II presents the derivation of the governing equations. First, we show the derivation of continuity equation and then the derivation of the equation of motion in terms of the viscous stress tensor, $\bar{\tau}$. After that, both equations will be converted to cylindrical coordinates. The derivations of these formulae are given in Appendix A. Then, we show the derivation of the mathematical model. The last section in this chapter states the boundary conditions. The next chapter contains a discussion on the geometry of stenosis with their mathematical formulation. Then, we will show how to formulate the geometry of mild stenosis in a non-tapered and tapered artery.

The following chapter presents the transformation of the governing equations using the radial coordinate transformation. Then, the derivations of the radial velocity component, $v_r(x, z, t)$ and the solution of the axial velocity component, $v_z(x, z, t)$ are shown using the finite difference method. In the same section, the volumetric flow rate, the resistance and the wall shear stress will be determined. Next, we will show the numerical procedure to programme the finite difference method using MATLAB programming. The complete program is given in Appendix B. Lastly, in this chapter we state some comments about the numerical results.

Chapter V discusses the numerical results. This chapter will be divided into eight sections including the introduction. In Section 5.2, we discuss the results for the axial and radial velocities at different taper angles under stenotic conditions and also at taper angle with comparison between flow through stenosis, non stenosis and steeper stenosis. Next section, the results and discussion for axial and radial velocity at different times and at different type of fluid in the same times are given. Section

5.4 will be presented the results for axial and radial velocity at different axial positions. The following section will illustrate the results of the variation flow rate, resistance and wall shear stress with time. Last sections we will state some comments about the results obtained. Finally, Chapter VI will conclude the research problem and list out several suggestions for future research.

REFERENCES

- Acheson, D.J. (1990). *Elementary Fluid Dynamics*. Oxford: Clarendon press.
- Astarita, G. and Marrucci, G. (1974). *Principle of non-Newtonian Fluid Mechanics*.
Maidenhead: McGRAW HILL Book Company.
- Barille, A. (1993). *How my body works - Circulation*. London: Orbis Publishing Ltd.
- Bird, R.B., Stewart, W.E. and Edwin, N.L. (2004). *Transport Phenomena*. New York:
John Wiley and Sons, Inc.
- Calvacanti, S. (1995). "Hemodynamics of an Artery with Mild Stenosis." *Journal Biomechanic*. **28**. 387-399.
- Chakravarty, S. (1987). "Effect of Stenosis on the Flow Behaviour of Blood in an Artery." *International Journal of Engineering Science*. **25**. 1003-1018.
- Chakravarty, S. and Datta, A. (1989). "Effect of Stenosis on Arterial Rheology through a Mathematical Model." *Mathematical Computer Modelling*. **12**. 1601-1612.
- Chakravarty, S. and Mandal, P.K. (1994). "Mathematical Modelling of Blood Flow Through an Overlapping Arterial Stenosis." *Mathematical and Computer Modelling*. **19**. 59-70.

- Chakravarty, S. and Mandal, P.K. (1996). "A Nonlinear Two-Dimensional Model of Blood Flow in an Overlapping Arterial Stenosis Subjected to Body Acceleration." *Mathematical and Computer Modelling*. **24**. 43-58.
- Chakravarty, S. and Mandal, P.K. (2000). "Two-Dimensional Blood Flow Through Tapered Arteries Under Stenotic Conditions." *International Journal of Non-Linear Mechanics*. **35**. 779-793.
- Chakravarty, S. and Sannigrahi, A.K. (1998). "An Analytical Estimate of the Flow-Field in a Porous Stenotic Artery Subject to Body Acceleration." *International Journal of Engineering Science*, **36**. 1083-1102.
- Chakravarty, S. and Sannigrahi, A.K. (1999). "A Nonlinear Mathematical Model of Blood Flow in a Constricted Artery Experiencing Body Acceleration" *Mathematical and Computer Modelling*. **29**. 9-25.
- Chakravarty, S., Datta, A. and Mandal, A.K. (1995). "Analysis of Nonlinear Blood Flow in a Stenosed Flexible Artery." *International Journal of Engineering Science*. **33**. 1821-1837.
- Chakravarty, S., Datta, A. and Mandal, A.K. (1996). "Effect of Body Acceleration on Unsteady Flow of Blood past a Time-Dependent Arterial Stenosis." *Mathematical and Computer Modelling*. **24**. 57-74.
- Crochet, M.J., Davies, A.R. and Walters, K. (1984). *Principle of non-Newtonian Fluid Mechanics*. Oxford: Elsevier.
- Edward, J., Shaughnessy, Jr., Katz, I.M. and Schaffer, J.P. (2005). *Introduction to Fluid Mechanics*. Oxford: Oxford University press.

- Enderle, J., Susan, B. and Bronzino, B. (2000). *Introduction to Biomedical Engineering*. London: Academic Press.
- Formaggia, L., Lamponi, D. and Quarteroni, A. (2003). "One-Dimensional Models for Blood Flow in Arteries." *Journal of Engineering Mathematics*. **47**. 251-276.
- Gijssen, F.J.H., Allanic, E., Vosse, F.N. and Janssen, J.D. (1999). "The Influences of the non-Newtonian Properties of Blood on the Flow in Large Arteries: Unsteady Flow in a 90° Curved Tube." *Journal of Biomechanics*. **32**. 705-713.
- Imaeda, K. and Goodman, F.O. (1980). "Analysis of Nonlinear Pulsatile Blood Flow in Arteries". *Journal Biomechanics*. **13**. 1007-1022.
- Ishikawa, T., Guimaraes, L.F.R., Oshima, S. and Yamone, R. (1998). "Effect of Non-Newtonian Property of Blood on flow through a Stenosed Tube". *Fluid Dynamic research*. **22**. 251-264.
- Jameson, A.H. (1937). *An Introduction to Fluid Mechanics*. London: Longmans, Green and Co.
- Kundu, P.K. and Cohen, I.M. (2004). *Fluid Mechanics*. Amsterdam: Elsevier Academic Press.
- Lee, K.W. and Xu, X.Y. (2002). "Modelling of Flow and Wall Behaviour in a Mildly Stenosed Tube." *Medical Engineering & Physics*. **24**. 575-586.
- Leyton, L. (1975). *Fluid Behavior in biological systems*. London: Oxford University Press.

- Mandal, P.K. (2005). "An Unsteady Analysis of Non-Newtonian Blood Flow through Tapered Arteries with a Stenosis." *International Journal of Non-Linear Mechanics*. **40**. 151-164.
- Manica, R. and Bortoli, A.L. (2003). "Simulation of Incompressible non-Newtonian flows through Channels with Suddens Expansion using the Power-Law model." *TEMA Tend. Mat. Apl. Comput.* **4**. 333-340.
- Michael, M.D (2004). *Introduction to Biomedical Engineering*. New Jersey: Pearson, Prentice Hall.
- Misra, J.C., Chakravarty, S. (1986). "Flow in Arteries in the present of Stenosis." *Journal Biomechanics*. **19**. 907-918.
- Moayeri, M.S. and Zendehtoodi, G.R. (2003). "Effect of Elastic Property of the Wall on Flow Characteristics through Arterial Stenosis." *Journal of Biomechanics*. **36**. 525-535.
- Nerem, K.E. (1992). "Vascular Fluid Mechanics, the Arterial Wall and arteriosclerosis". *Journal Biomechanics, Eng, Trans ASME*. **114**. 274-282.
- Paterson, A.R. (1984). *A First Course in Fluid Dynamics*. Clarendon: The press Syndicate of the University of Cambridge.
- Pedley, T.J. (1980). *The Fluid Mechanics of large Blood Vessels*. London: Cambridge University Press.
- Renold, L.F. (1998). *Basic Transport Phenomena in Biomedical Engineering*. Philadelphia: Taylor and Francis.

Tzirtzilakis, E.E. (2005). "A Mathematical Model for Blood Flow in Magnetic Field."
Journal of Fluids. **17**. 1-15.

Tzirtzilakis, E.E., Kafoussias, N.G., and Hatzikonstantinou, P.M. (2002). "Biomagnetic
Fluid Flow in a Rectangular Duct". *4th GRACM Congress on Computational
Mechanics*.