
PICA: PIPELINE INTEGRATED CORROSION ASSESSMENT TOOL FOR STRUCTURE INTEGRITY

¹Norhazilan Md Noor, ²Nor Apaziah Nor Ozman, ³Nordin Yahaya,
⁴Mohd Nazmi Mohd Ali Napiah & ⁵Zaabah Abdullah

^{1,2,3}Reliability Engineering & Safety Assessment Research Group (RESA), Department of
Structure and Material, Faculty of Civil Engineering, Universiti Teknologi Malaysia, 81310,
Skudai, Johor, Malaysia.

^{4,5}Petronas Gas Berhad (PGB), KM 10 Lebuhraya Kuantan-Segamat, Segamat, 85000, Johor.

¹corresponding author : norhazilan@utm.my

Abstract: The paper develops an automated assessment tool specially tailored for corroding steel pipeline used to convey hydrocarbon deposit. The proposed tool named PICA integrates deterministic and reliability method to evaluate the time-variant remaining allowable pressure of steel pipelines subjects to internal and external corrosion based on series of metal loss data. The deterministic assessment method is preferred by pipeline operator due to its simplicity, yet the accuracy is still arguable as the integrity of assessment results is dominantly governed by inherent uncertainties which insufficiently covered even by the introduction of safety factor. Whereas reliability assessment requires systematic data sampling and matching method as well as probabilistic nature of the parameters to give more credible and accurate result especially in estimating the corrosion growth rate. The combination of data sampling, data analysis, structure assessment and integrity prediction both in the form of deterministic and reliability-based methodology has great potential to be developed as robust and potent software. This assessment software covers wide range of options including selection of assessment codes, corrosion models, data sampling techniques, assessment methods and particularly effective to manage the vast amounts of collected data relating to pipeline condition, in a way that enables pipeline operators to monitor the pipeline integrity efficiently. By integrating various stages of pipeline assessment procedure into a unified systematic assessment framework, it can greatly assist pipeline operator to protect the public, financial investment and environment from such devastating effects owing to pipeline failures.

Keywords: Pipeline; Corrosion; Integrity; Probabilistic

1.0 INTRODUCTION

Corrosion is recognized as one of the most important degradation mechanisms capable to affect the long-term reliability and integrity of metallic

pipelines (Shu, et al., 2009). Corrosion damage and failure criteria are not commonly considered in the design and construction of many engineering structures. Even if corrosion is considered, unanticipated changes environment in which the structure operates can result in unexpected corrosion damage (Tkacker, 2009). Pipeline operators throughout the world are confronted with the expensive and risky task of operating aged pipelines because of corrosion and its potential damaging effects (Ahammed, 1998). Loss of the metal cross section is one of the major effects of corrosion and these results in a reduction of pipeline carrying capacity and safety and as the pipelines are ageing and corrosion may develop, the economical consequences of reduced operation pressure, repairs or replacements may become adversely high. Assessment method is required to determine the severity of such defects when they are detected in pipelines (Cosham et al., 2003). The assessment condition of existing oil and gas pipeline is necessary in order to protect the public, financial investment and environment from such failures. Systematic and optimised regular inspections of pipelines with state-of-the art tools and procedures can reduce significantly the risk of any undue accident caused by a lack of unawareness of the integrity of the line (Cosham, et al., 2007).

2.0 PIPELINE CORROSION ASSESSMENT

As in-line inspection technology advances and tool resolution and accuracy increases, the traditional methods of dealing with ILI data are quickly becoming unfeasible, both from an economic and a practical point of view. Corrosion growth analysis provides a proactive method of analysing large quantities of ILI data, prioritizing pipeline repair programs and optimizing re-inspection intervals. It enables operator to fully understand the potential future risk to a pipeline due to corrosion (Desjardins, 2002). There is thus a need to provide the pipeline industry with an effective and affordable approach to assess corroding pipeline, and in particular, a need to effectively manage the vast amounts of collected data relating to pipeline condition, in a way that enables pipeline operators to maintain pipeline integrity. An initial review of the pipeline integrity based on the operating history and the results of any past survey or inspections will identify the likely problems and consequently the additional data that may needed to make a decision about the future of the pipeline (Jones and Hopkins, 2005). In order to achieve such optimization, the improvised of best practice assessment and prediction tools need to be developed.

3.0 AVAILABILITY OF PIPELINE TOOLS ASSESSMENT

Numerous pigging data availability is just the first piece of a much larger puzzle. The challenge is how to build a system capable of collecting data and turn it into information in the context of managing pipeline integrity (Wiegele et al., 2004). Recognizing the value of numerous of pigging data in industry, an inherent understanding of how to fully utilize pigging data for the sake of structure integrity assessment has become a necessity. A systematic approach to automate the assessment process by the means of software specially tailored to assess corroding pipeline with great capability of data processing and sampling as well as deterministic and reliability assessment engine is hardly available in the industry since existing tools are not that comprehensive (Dawson et al., 2001). Most of the pipeline assessment is purely deterministic and are lacking stochastic and reliability engineering element as well as data sampling tool, hence under utilises the inspection data in determining the exact corrosion growth rate (Shu et al., 2009; Melchers and Jeffery, 2007). Available assessment tools for assessing corroding pipeline in industry such as Electronic Corrosion Engineer [ECE], ENCIPDA and CORROLINE are designed for assessment of pipeline internal condition based on operational parameters such as temperature, liquid flow velocity, hydraulic diameter of the pipe and others (Kvernfold et al. 1992). In real world, the aforementioned parameters are somehow immeasurable consistently along the length of the pipeline causing uncertainties in the estimation of corrosion dynamic rate. Other existing software such as RSTRENG is used to calculate the remaining strength of externally corroded pipe whereby the procedure merely take into account of maximum depth of defect from the numerous number of inspection data (Bjornoy and Marley, 2001). Hence, neglecting the effect of defect variation upon pipeline failure probability.

4.0 THE ASSESSMENT PROCEDURE FRAMEWORK

The framework of PICA procedure consists of four independent stages namely data sampling, data analysis, structure assessment and integrity prediction. Every single stage was developed as a standalone component with specific output. Even so, all stages are later integrated to give a comprehensive assessment option to pipeline owner if failure probability of the line becomes the preferable main output. Figures 1 to 3 depict the architecture of PICA algorithm. Data sampling and data analysis require large volume of inspection data which in

practiced are often underutilized due to lack of understanding in handling the data statistically.

Key to a robust yet practical assessment tool is the ability to assess with a measurable level of confidence, the corrosion rates for all defects on the pipeline. When multiple in-line inspections are available, corrosion rate determination is enhanced by PICA software that automatically correlates defects from one inspection to the next. The appropriate level of confidence in growth rates and corrosion severity predictions are obtained by incorporating the error associated with inspection tools into all observations and subsequent calculations. The data optimisation can be used effectively to assess the integrity of the corroding pipeline to determine the level of fitness-for-service. The structure integrity assessment and prediction can be based on either deterministic or reliability method or combination of both.

4.1 Data Sampling

In this stage, historical data representing metal loss dimension (depth and length) measured through repeated pigging inspection are utilised to determine the corrosion growth rate. The calculation of growth rate is based on linear model. The sampling process is intended to match corresponding inspection data from previous inspection with the later one. When two or more inspections database available, individual defect growth rates can be determined with a decent degree of confidence. Corrosion rates are then calculated from the change in defect size between two or more inspections. Determining the change in size however, presents the significant challenge of matching every defect from multiple ILI data sets. Manual checks are conducted throughout the process to ensure data accuracy. This process takes full advantage of the ILI data and gather corrosion growth information, enabling the future repair and re-inspection needs to be assessed based on economy and safety issues (Dawson and Walker, 2005). The flowchart of data sampling procedure and its software interface are shown in Figure 4 and 5 respectively.

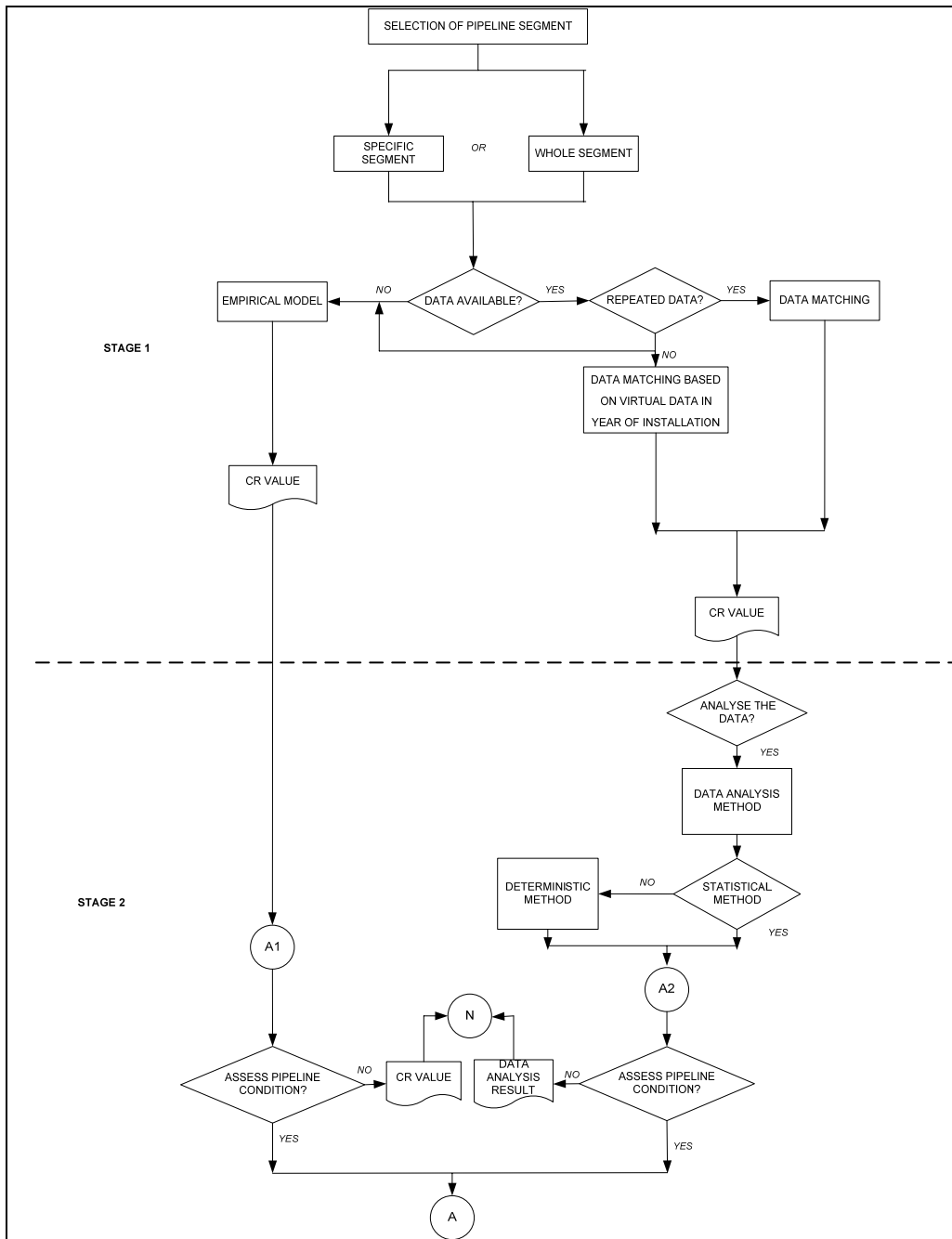


Figure 1: Flowchart of data sampling and data analysis stages

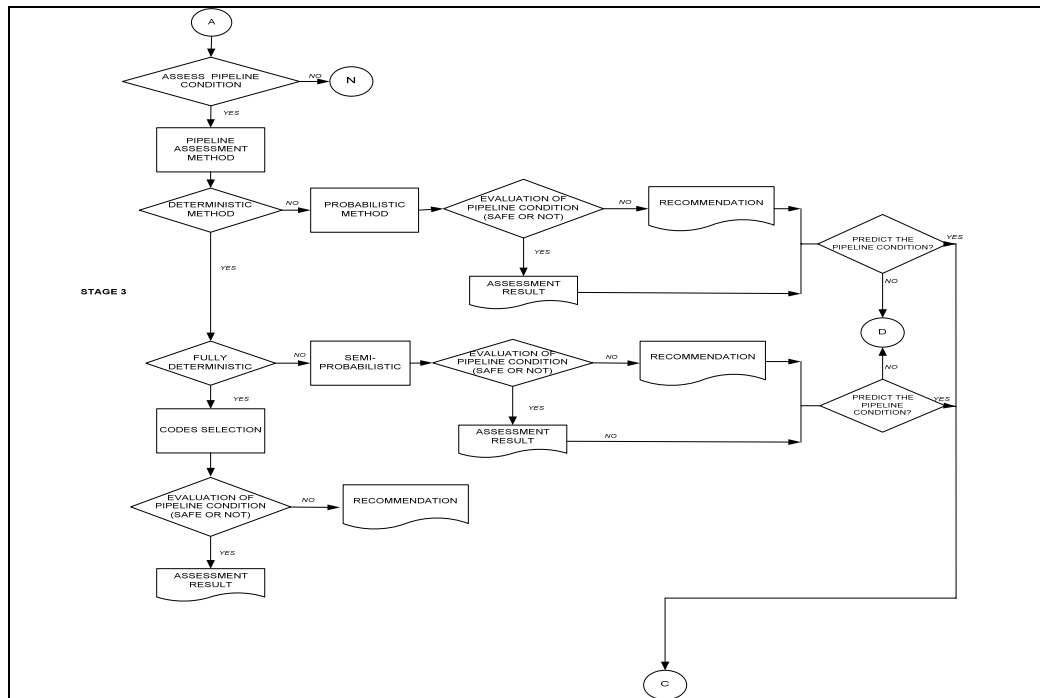


Figure 2: Flowchart of structure assessment stage

4.2 Data Analysis

Data analysis provides useful information pertaining to corrosion mechanism such as defect dimensions and defect growth rate based on the matched data. This process consists of two stages namely statistical and probabilistic analysis. Statistical method is used to estimate the average and variation of the corrosion parameters. Throughout several systematic probability methods, a proper distribution can be well verified. Under deterministic approach, histogram of the corrosion-related parameter is more than sufficient to provide vital information for code-based pipeline assessment procedure. However, if the operator tends to use reliability method in the assessment process, it is a requisite to enhance data analysis so it can cover the proper steps of probabilistic technique. Data analysis can be effectively used to locate data problem areas, measure data changing over time and increase the overall understanding of complex statistics. The information obtained from such analysis can have a significant effect on decision making.

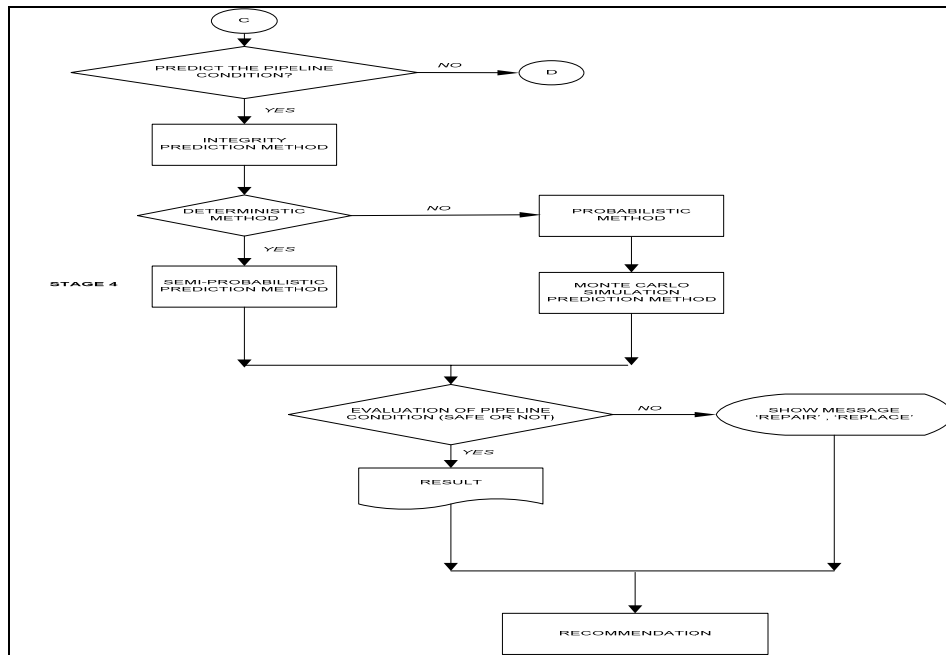


Figure 3: Flowchart of integrity prediction stage

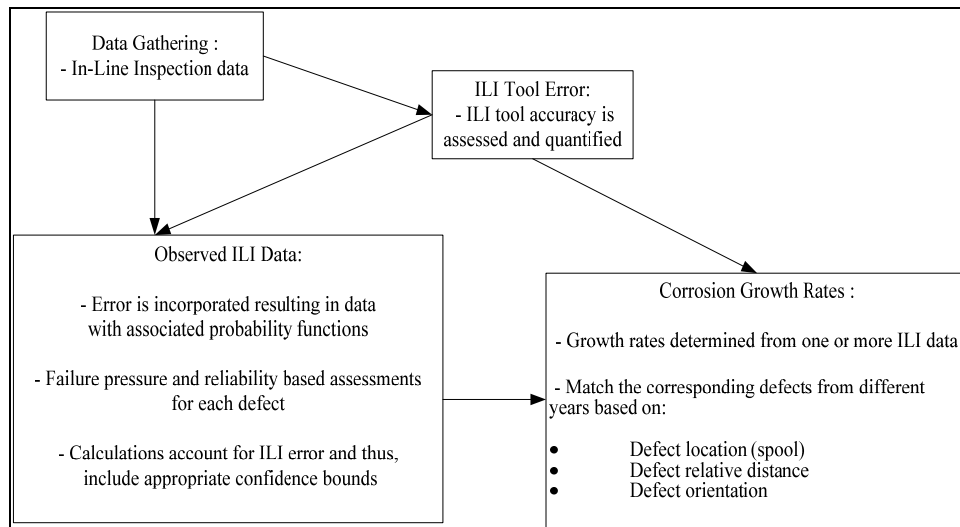


Figure 4: Data sampling procedure

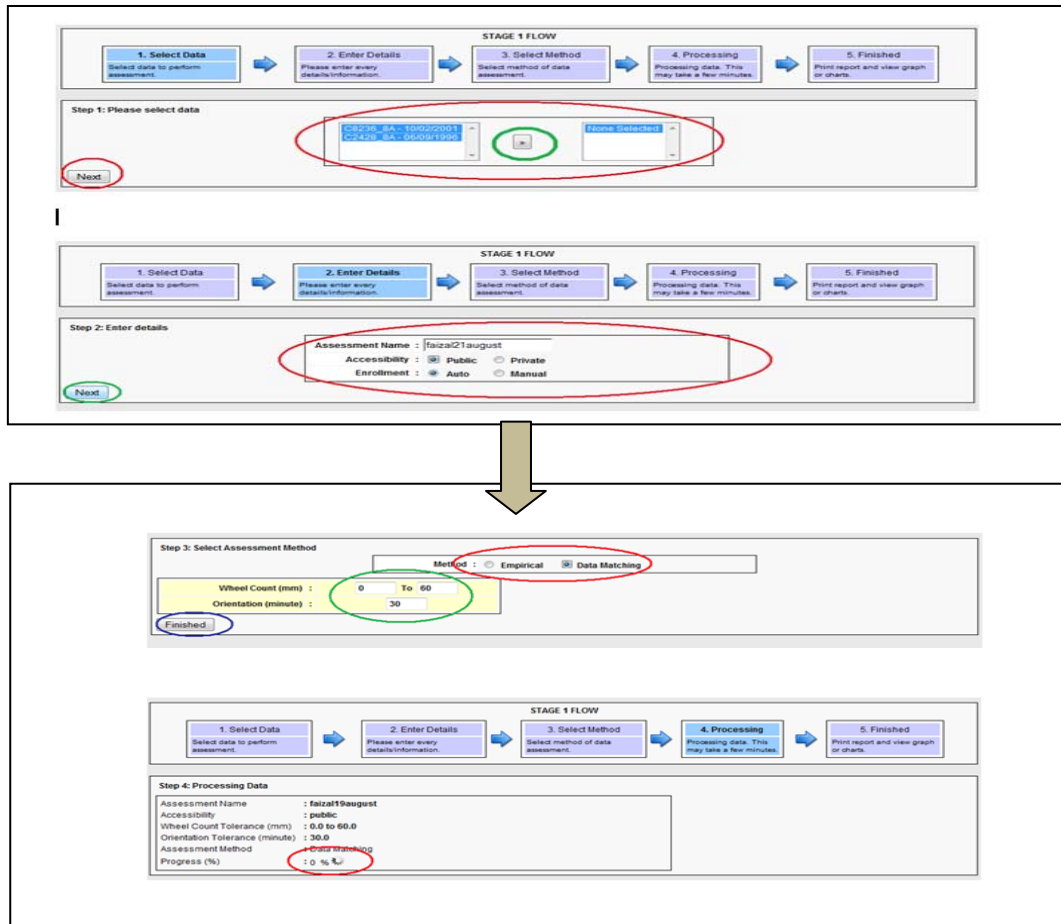


Figure 5: Interface of data matching architecture

4.3 Pipeline Assessment

The evaluation of remaining strength and reliability assessment of corroded pipelines can be carried out using both deterministic and reliability methods. Deterministic assessment is a straight-forward approach based on codes or established capacity equation such as the ASME B31G, modified ASME B31G and DNV RP-F101. The failure pressure equation adopted in these codes is used to estimate the maximum allowable pressure for corroded pipeline. The available assessment codes can be categorised into two categories that is fully deterministic code and semi-probabilistic code. Fully deterministic code such as B31G equation does not cater the variation of the corrosion parameters as it is already represented by safety factor, hence poor capability of projecting

the future remaining life of the pipeline. DNV in year 1999 has introduced a deterministic capacity equation with partial safety factors through its new assessment code known as RP-F101 (Det Norske Veritas, 1999).

The traditional design code which focused in deterministic methods are unable to predict the failure probability of corroded pipelines at given time and reference back to design code or specifications is likely to produce unduly conservative assessment ^[1]. As an alternative, the methods require a reliability engineering technique to assess future risk based on calculating the probability of failure (POF). This method is based on the principle of load-resistance interference distribution. It has great capability of taking into account inherent uncertainties that govern the variation of corrosion parameters in order to improve the accuracy of pipeline assessment. As previously mentioned, the outcome of this approach is the failure probability estimated using limit state function derived from pipeline capacity equation from the assessment codes.

4.4 Integrity Prediction

The concept of integrity or reliability means that any attempt to quantify it must involve the use of statistical methods. Therefore to evaluate the future remaining life of corroding pipelines, the use of statistical and probabilistic approaches are necessary. Since the outcome of the pipeline assessment based on reliability approach is the probability of failure (POF), the load-resistance interference principle must be adopted. Monte Carlo simulation is one of the methods for iteratively evaluating a deterministic model using sets of random numbers as inputs. This method is often used when the model is complex, nonlinear, or involves more than just a couple uncertain parameters. The variation in failure probability can be plotted against time and compared with the target probabilities for the limit state considered; the critical hazard and the time of pipeline failure can be identified. Monte Carlo simulation is preferable since this technique is less complicated and it can simulate a large number of experiments and the variables can be in any type of distribution. This technique involves sampling of random variables from respective distribution and evaluating the numbers of failure attempt (violation of limit state function) over the number of simulation cycles, N . Limit state function shows how the pipeline fails (leakage or bursting). It is repeated many times with a new random vector of variables [refer to Figure 6]. Therefore for N trials, the probability of failure is determined as;

$$P_f = \frac{n(G(x) < 0)}{N} \quad [1]$$

$n [G(x) \leq 0]$ = number of trials which violated limit state function
 N = number of trials.
 P_f = probability of failure

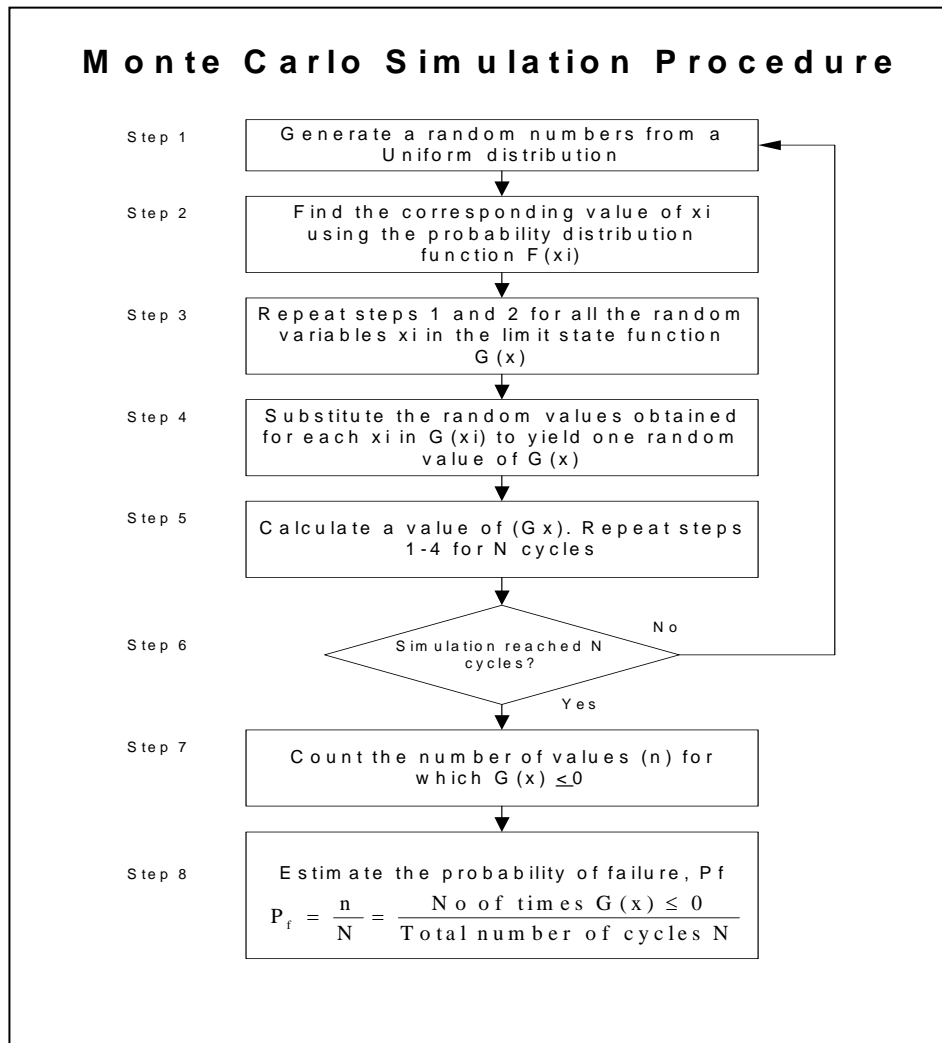


Figure 6: Procedure of probability of failure estimation using Monte Carlo simulation method.

5.0 REQUIREMENT AND DEVELOPMENT OF SOFTWARE SYSTEM

The next stage is to integrate all of the standalone stages and automate the assessment process using IT tools (refer Table 1 and Figure 7). The automation of the procedure will boost the effectiveness and speed of the assessment and make it more marketable.

Table 1: Types of programming, platform and system utilized in software development

Programming/System	Criteria
Java Programming Language	Java is well-known for its portability and the code can be run either on UNIX-based or Windows-based system. Java is widely used in scientific and engineering application nowadays. Alternatively, dot.Net framework is available but only compatible with Windows-based system.
Web-based Approach	By using web-based platform, user can access to the system without any need for specific installation in their personal computer. Alternatively, developer can use stand alone application which needs to be installed beforehand.
Apache Tomcat 6.0	Apache is an open source software provider and its main product is Apache Web Server. There are several versions of Apache and in this system, Apache Tomcat 6.0 was chosen for installation on UNIX-based machine or Windows-based machine.
MySQL 5.1	MySQL is a database tool with its main function to store system data. MySQL is open source software and can be installed on either UNIX-based machine or Windows-based machine. MySQL 5 support features like PL/SQL and Views.
Netbeans IDE 6.5	Netbeans IDE is open source software which focuses on Java technology and widely used by Java developer. Netbeans can be used to develop web-based software or standalone software. Plus, Netbeans can support native language like C++ and other programming language such as Ruby and PHP.

<p>Adobe Dreamweaver CS3</p>	<p>Adobe Dreamweaver is a development tool for web with a very user-friendly interface. Adobe Dreamweaver is widely used to develop web interface and code whereby it can support many programming language such as Java JSP, PHP and ASP.</p>
<p>SQLYog 8.14</p>	<p>SQLYog is database editor software focused on MySQL database. SQLYog is a shareware and it's free edition only limited to certain features. Alternatively, Navicat can be used to replace SQLYog.</p>
<p>Amcharts</p>	<p>Amcharts is a flash-based application used to provide graphical data representation for this system. Amchart can be deployed on web-based application or standalone application and completely platform independent. Jchart can be used as an alternative to Amcharts with similar capability.</p>

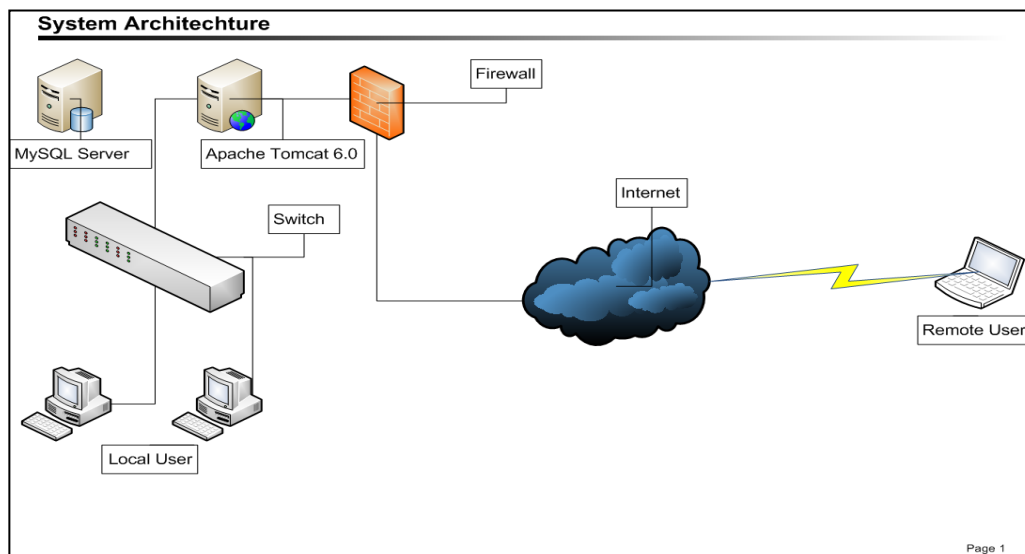


Figure 7: System Architecture

5.0 INTEGRATION OF THE ASSESSMENT TOOLS

The integration of four standalone stages can assist pipeline operator to assess their assets integrity effectively at a much cheaper cost (refer to Figure 8). Assessing structure integrity; pipeline in this case; involves multiple levels that requires combination of multi-dimensional knowledge covering variety of disciplines. As such, the overall assessment process becomes complex and impractical unless these multiple levels of assessment methodology can be integrated seamlessly. The proposed assessment procedure meet adverse challenge to combine four standalone stages of data sampling, data analysis, structure assessment and integrity prediction under one single framework with flexibility of producing different types of output according to the selected stages. For instance, the user can choose to assess the pipeline remaining life at the time of inspection rather than projecting to the point where the structure might fail in the future..

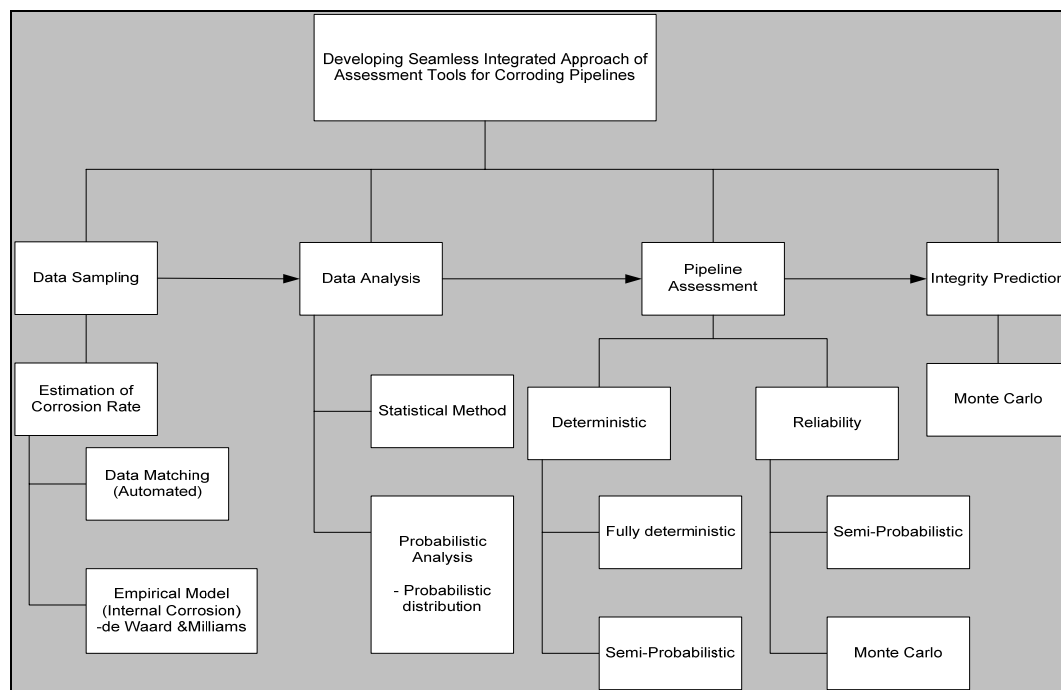


Figure 8: Integration of Assessment Stages

This selection only involves data sampling, data analysis and pipeline assessment without having to go through integrity prediction stage. Every single

stage is designed to produce its intended output independently, yet the output can be utilized in other stage to achieve better output. In a simple word, the stages are independent of each other unless the user decides to run multiple analyses under several stages

5.0 SOFTWARE DEMONSTRATION

Data sampling procedure was conducted to match corresponding inspection results from different years manually in Stage 1. To locate the corresponding defects, information of girth weld, wheel count, and defect orientation is referred to (Yahaya et al. 2009; Noor et al. 2010). The existence of distance-related errors may cause difficulties in locating the pair of defect based on wheel count distance between two databases of pigging data (as shown in Figure 9). Therefore, a reasonable margin of error /tolerance in regard to relative distance was allowed until sufficient numbers of data can be successfully matched to produce a proper distribution.

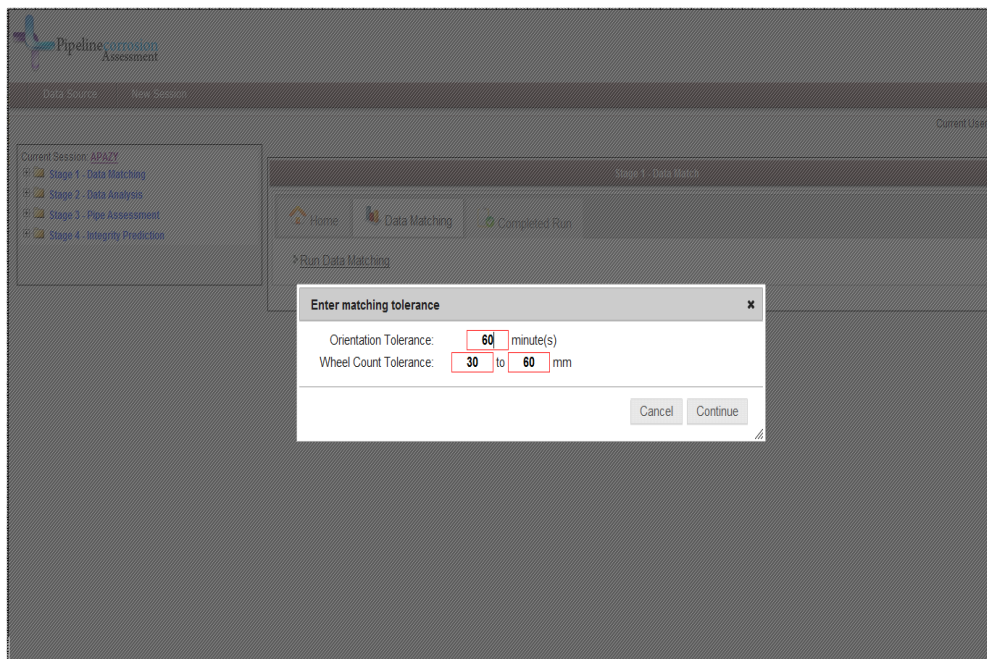


Figure 9: Tolerance of orientation and wheel count for data matching in Stage 1

Margin of errors/tolerance will alleviate difficulties in finding correct pair of data between two historical databases of pigging data. Figure 10 illustrates example of result from data matching in percentage. Result from data matching is then stored and ready for access in the next stage to calculate probability of failure of the pipeline. Figure 11 shows the flow of the procedure in assessing the pipeline using this tool. The outcome from this procedure is a probability of failure either at the time of inspection or in the future.

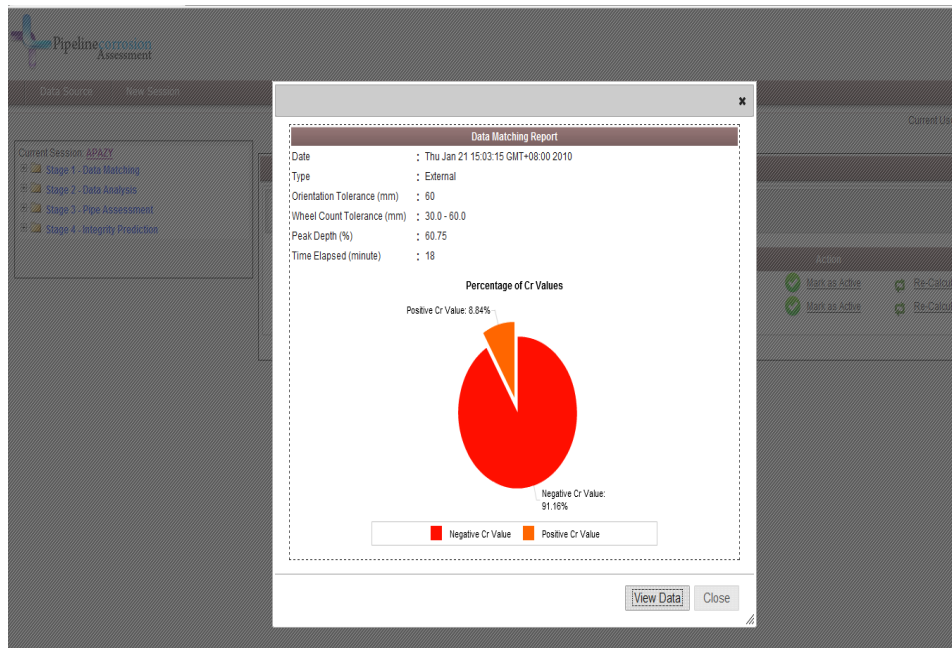


Figure 10: Example of result from data matching in percentage



Figure 11: The flow of the procedure for pipeline assessment from Stage 1 to Stage 4 covering data matching, statistical and probabilistic assessment and estimation of failure probability

6.0 CONCLUSION

The study will contribute to a betterment of pipeline integrity assessment practiced among pipeline operators in Malaysia and perhaps globally. It will encourage pipeline operators to optimise the large volume of inspection data for assessment purposes. The integration of different processes related to pipeline assessment is hardly feasible due to the complexity of reliability method and the issue on the availability of pipeline inspection data. By integrating two different principles of deterministic and reliability engineering to form a complete assessment package the pipeline operators can have a great option to choose either deterministic or reliability approaches according to the targeted requirement. Moreover, the proposed seamless integrated approach as a software package may simplify yet maintain the practicality aspect of pipeline fitness-for-service evaluation, hence minimise the future maintenance cost that may arise due to structure failure associated with corrosion defects.

7.0 ACKNOWLEDGMENT

The authors are pleased to acknowledge the Petronas Gas Berhad (PGB), Ministry of Science, Technology and Innovation, Malaysia (MOSTI) and the Ministry of Higher Education (MOHE) for the support of providing the research funds and scholarship (NSF).

REFERENCES

- Ahmed, M. (1998). Probabilistic Estimation of Remaining Life of a Pipeline in the Presence of Active Corrosion Defects. *International Journal of Pressure Vessels and Piping*. 75. 321-329.
- Bjornoy, O.H. and Marley, M.J. (2001). "Assessment of Corroded Pipelines , Past, Present and Future." Stavanger, Norway: ISOPE 2001, Proceedings of the 11th International Offshore and Polar Engineering Conference. June 17-22. **Vol II**. 93-101.
- Cosham, A. and Hopkins, P. (2003). The assessment of corrosion in pipelines – Guidance in the pipeline defect assessment manual (PDAM). *International Colloquium Reliability of High Pressure Steel Pipelines*, pp 1-30
- Cosham, A., Hopkins, P., Macdonald, K.A. (2007). Best practice for the assessment of defects in pipelines – Corrosion. *Engineering Failure Analysis*. 14. 1245 – 1265.
- Dawson, J. and Walker, J. (2005). Integrated Pipeline Remediation. The Oil and gas Review

- Dawson, J., Bruce, K and John, D.G. (2001). *Corrosion Risk Assessment and Safety Management for Offshore Processing Facilities*.(1st ed.)St Clements House, Colegate, Norwich.
- Desjardins, G. (2002). Improved Data Quality Opens Way for Predicting Corrosion Growth and Severity. Pipeline and Gas Journal. Dec:229,12:ABI/INFORM Trade & Industry.
- Det Norske Veritas (1999). "Recommended Practice RP-F101 for Corroded Pipelines 2004. " Norway: Det Norske Veritas.
- Jones, R.P and Hopkins, P. (2005). Managing ILI Projects to get the Results you need.Pigging Products and Services Association. Penspen Integrity, Richmond – Upon –Thames,: UK
- Kvernfold, O., Johnson, R. and Helgerson, T.,(1992).Assessment of Internal Pipeline Corrosion. *Proceedings of the International Offshore Mechanics and Arctic Engineering Symposium*. 7 – 12 June. Calgary, Alberta: 409-420.
- Melchers, R.E. and Jeffrey, R. (2007). Probabilistic models for steel corrosion loss and pitting of marine infrastructure, Reliability Engineering and System Safety 93: 428-432.
- Noor, N.M. , Yahaya, N., Ozman, N.A.N. and Othman, S.R. (2010). The Forecasting Residual Life of Corroding Pipeline based on Semi-Probabilistic Method. UNIMAS e-Journal Civil Engineering. Vol.1(2): April 2010
- Nyborg, R. (2006). Field Data Collection, Evaluation and Use for Corrosivity Prediction and Validation of Models. Part 2: Evaluation of field Data and Comparison of Prediction Models. CORROSION NACEExpo/2006.61st Annual Conference & Exposition. Houston Texas: NACE International, 2006.
- Shu X. L, Shu R. Y, Hai L.Z, Jian H.L. and Rui L. (2009). Predicting Corrosion Remaining Life of Underground Pipelines with a Mechanically-based Probabilistic Model. Journal of Petroleum Science and Engineering.65.162-166.
- Thacker, H.B. *et al.*, (2009). Assessing the Integrity of Oil and Gas Pipelines.Southwest Research Institute. PETROMIN.Asia's Exploration & Production Bussiness Magazine.March/April 2009.
- Wiegele E., Clouston S. and Book D. (2004). Realize the value of pipeline data management across the enterprise by exploiting legacy databases. GITA 13th Annual GIS for Oil and Gas Conference. September 22.Houston:1-9.
- Yahaya, N., Noor, N.M. , Din, M.M. and Nor, S.H.M. (2009). Prediction of CO₂ Corrosion Growth in Submarine Pipelines. Malaysian J. Civil. Eng, Vol. 21 (1): 69-81.