

## Adsorption of Metsulfuron-Methyl on Soils under Oil Palm Plantation: A Case Study

Norhayati Mohd Tahir\* and Nicholas Yeow Jee Sing

*Environmental Research Group (ERG), Department of Chemical Sciences,  
Faculty of Science and Technology, Kolej Universiti Sains dan Teknologi Malaysia (KUSTEM), Mengabang Telipot, Kuala  
Terengganu, 21030 Malaysia.*

### Abstract

The adsorption of metsulfuron-methyl herbicide in four types of soil series taken from an oil palm estate has been investigated using a batch technique with the herbicide detected using a reversed phase C<sub>18</sub> HPLC technique. Selected soil physicochemical properties were also analysed. The adsorption behaviour of the herbicide in the soils was evaluated using Freundlich and linear adsorption isotherms. Results indicated that soil from Bernam series exhibited strongest adsorption affinity for the herbicide followed by Jawa, Selangor and Tongkang soil series with distribution coefficient value of ca. 29.0, 19.2, 18.3 and 18.0, respectively. Comparison of the soils physicochemical properties revealed that whilst Tongkang and Selangor soil series have similar pH values, their organic matter content differed significantly from one another. Bernam soil on the other hand exhibited the lowest pH values compared to the other three soils but its organic matter content is similar to that of Selangor soil and is significantly higher than Tongkang and Jawa soil series. Thus it could be concluded that differences in soil properties contributed to the varying adsorption coefficient values observed in the present study. In agreement with previously reported studies, this observation supports the contention that soil properties play an important role in controlling the adsorption behaviour of metsulfuron-methyl herbicide in soils.

*Keywords: adsorption; metsulfuron-methyl; soils; sulfonyl urea herbicides; oil palm plantation*

### 1.0 Introduction

Metsulfuron-methyl (Fig. 1) is a post emergence sulfonylurea herbicide with high herbicidal activity even at low application rate and is widely used worldwide including Malaysia for effective control of a wide range of weeds in cereal, pasture and plantation crops. Sulfonylurea herbicides inhibit acetolactate synthase, a key enzyme in the biosynthesis of branched amino acids in plants. They are generally assumed to be environmentally safe because of their relatively short half-life in the environment, low application rates and low toxicity to mammals; however there have been studies which showed to the contrary [1-5], giving rise to concerns over the possible environmental contamination of this herbicide, particularly its leaching potential to the ground water system. The leaching potential of any pesticide, in general, can be assessed by the degree of their adsorption at the soil-water interface. This adsorption process is, in turn, influenced by the physical and chemical properties of soil, chemical nature of the herbicide and also the climatic factors [6]. Although the adsorption behaviour of sulfonylurea herbicides has been well studied in temperate soils [7-8 and literature cited therein], only limited similar studies have been carried out in tropical

---

\*Corresponding author: Tel: 609-6683258; Fax: 609-6694660; Email: hayati@kustem.edu.my

soils [9-11]. Since tropical soils may differ significantly in terms of their physico-chemical properties compared to those commonly found in temperate climate, there is still a need to obtain information on the influence of soil properties on the sorption behaviour of these herbicides in tropical soils. The objective of this study was to investigate the adsorption behaviour of metsulfuron-methyl in four types of soil series commonly found in palm oil plantation in order to provide data to assess the potential risk of this herbicide to contaminate the environment.

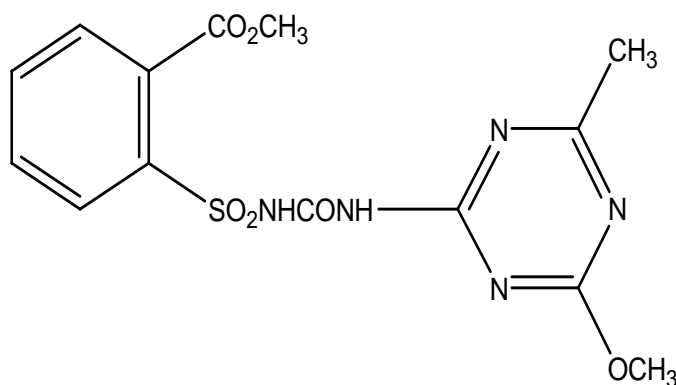


Figure 1 Structure of metsulfuron-methyl

## 2.0 Materials & Method

Surface soil samples (0-10cm) from the Selangor, Tongkang, Jawa and Bernam series were taken from an oil palm estate in Sungai Buloh, Selangor Darul Ehsan. Bulk soils were air-dried, ground and passed through a 2mm sieve. Sub-samples of freshly collected soils were dried at 110°C for 24h to determine initial soil moisture content. Soil organic matter (OM) content was determined using the Walkley and Black method [12] whilst soil pH was determined using a glass electrode in a 1:2.5 soil to 0.02M calcium chloride suspension.

The commercial formulation of metsulfuron-methyl herbicide (trade name Ally®) containing 20% active ingredient was used in this study. All herbicide solutions were prepared in 0.02M CaCl<sub>2</sub> and its concentrations determined by a reversed phase C<sub>18</sub> HPLC using a mobile phase of acetonitrile in water containing orthophosphoric acid (60:40:0.25). Detection of the herbicide was carried out at 242 nm wavelength. Adsorption study was carried out using a batch equilibrium method [7]. Triplicate samples of the air-dried soil (5g) were equilibrated with 10ml herbicide solutions (initial concentration, C<sub>i</sub> = 0 – 10 mg L<sup>-1</sup>), shaken for 24h and then allowed to stand followed by centrifugation. The clear supernatants thus obtained were analysed for their herbicide content using HPLC technique described above. The amount of herbicide adsorbed by the soil was estimated as the differences between that initially present in solution (C<sub>i</sub>) and that remaining after equilibration with soil (C<sub>e</sub>). Solutions of metsulfuron-methyl in CaCl<sub>2</sub> without the soil subjected to similar equilibration process resulted in non-significant losses of the herbicide.

## 3.0 Results and Discussion

Table 1 presents the physicochemical properties of the soils used in this study. Results obtained showed that Selangor exhibited relatively higher surface soil moisture content

compared to Jawa, Bernam and Tongkang soils; statistical analysis (ANOVA) however suggests that this differences is insignificant ( $p>0.05$ ). The Selangor and Bernam soils were observed to have similar OM content but significantly richer ( $p<0.05$ ) in OM content compared to the Jawa and Tongkang soil, respectively. Interestingly, soil pH of the Tongkang soil was comparable to that of Selangor soil but both were found to be significantly higher ( $p<0.05$ ) than that of the Jawa and Bernam soil series.

Table 1: Selected physicochemical properties of the soil samples

Soil Properties	Tongkang	Selangor	Bernam	Jawa
Moisture Content (%)	23.2	28.5	22.6	26.1
pH (0.02M CaCl <sub>2</sub> )	3.45	3.46	3.05	3.24
Organic Matter (%)	4.40	15.2	15.8	8.50
Organic Carbon (%)	2.55	8.80	9.17	4.93

The adsorption isotherms for metsulfuron-methyl in the soil samples are shown in Figure 2. In contrast to earlier results with other soil and herbicide systems [9-11], generally all the adsorption isotherms corresponded to the H-type curve according to classification of Giles *et al.* [13]. This behaviour indicates a very high herbicide-soil affinity such that complete adsorption of the herbicide occurred at low herbicide concentration; the adsorption then further increased with increasing solution concentration with no constant value being reached in the concentration range used in this study. The adsorption coefficient ( $K_d$ ), which represents the partitioning of the herbicide between liquid ( $C_e$ ) and solid phases ( $C_s$ ) in equilibrium was calculated using Equation 1. The empirical Freundlich adsorption isotherm (Equation 2), which allows the evaluation of experimental constants  $K_f$  and  $n$ , was also calculated using the linearised form the equation (Equation 3). The Freundlich isotherm takes into account the non-linearity of sorption at increasing concentration and the values of  $K_f$  will equal  $K_d$  when  $n$  equals 1. In addition, the distribution coefficient values of all soils normalized with respect to percentage of organic carbon (%OC) present in the soil,  $K_{oc}$ , [14] were also calculated (Equation 4); typically a very narrow range of  $K_{oc}$  among soils with varying levels of organic carbon is indicative of the latter being the major factor in controlling adsorption process whereas a wider range would suggest that possibly other soil properties influenced the herbicide adsorption.

$$C_s = K_d C_e \quad (\text{Equation 1})$$

$$C_s = K_f C_e^{1/n} \quad (\text{Equation 2})$$

$$\text{Log } C_s = \text{Log } K_f + 1/n \text{ Log } C_e \quad (\text{Equation 3})$$

$$K_{oc} = K_d / \%OC \quad (\text{Equation 4})$$

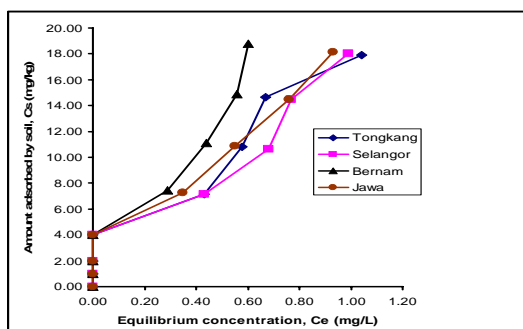


Figure 2 Adsorption isotherm of metsulfuron-methyl in soil samples

The values of the  $K_d$ , Freundlich constants,  $K_f$  and  $n$ , and  $K_{oc}$  thus obtained are given in Table 2 and the effect of soils properties could clearly be seen from, these data. All the adsorption isotherms showed a reasonably good fit with the Freundlich isotherms ( $r^2 > 0.92$ ) and the  $K_f$  values calculated for the soils were quite close to the  $K_d$  values with  $n$  values approximated to unity indicating that the adsorption behaviour is effectively linear for the soil-herbicide systems under investigation. The adsorption capacity of the soils towards metsulfuron-methyl was evaluated by comparing the values of  $K_d$  and  $K_f$  obtained. Bernam soil with highest OM and lowest pH exhibited the highest value of  $K_d$  followed by Jawa, Selangor and Tongkang soil, respectively. A similar trend was observed for the Freundlich adsorption coefficient ( $K_f$ ) except that Tongkang soil, instead of Selangor, exhibited the lowest adsorption capacity towards the herbicide. Interestingly, Selangor and Tongkang soils have similar soil pH (3.46 and 3.45, respectively) but the Selangor soil has almost four times more organic matter content than Tongkang soil. Another interesting feature to note is that although Selangor soil contained comparable OM content to Bernam soil (Table 1), the adsorption capacity of Bernam soil significantly exceeds that of Selangor soil series. OM has been reported to be one of the major factors that influence the extent of pesticide adsorption on soils and results obtained in this study are in agreement with earlier reports [7- 11, 15]. A simple correlation test between soil OM and  $K_d$  and  $K_f$ , respectively was carried out to assess the extent of which OM influence the adsorption of metsulfuron-methyl; the coefficient was found to be 0.59 and 0.54, respectively and although relatively smaller than previously reported [8, 11], the values obtained nonetheless indicate a fairly strong positive correlation between OM content and adsorption. In addition, a lower correlation values is probably indicative of other additional factor(s) imparting their role in controlling the adsorption behaviour of metsulfuron-methyl in the soils studied. A wide range of values obtained for the distribution coefficient values normalized with respect to percentage of organic carbon (%OC) present in the soil,  $K_{oc}$ , also support the contention that OM alone could not account for the observed variation in  $K_d$  and  $K_f$  values between these soils.

Table 2. Freundlich constants ( $K_f$  and  $n$ ), distribution coefficient ( $K_d$ ) and organic carbon normalized distribution coefficient ( $K_{oc}$ )

Soil	$K_{oc}$	Distribution Coefficient		Freundlich Constants		
		$K_d$	$R^2$	$K_f$	$n$	$r^2$
Tongkang	7.06	18.0	0.91	18.8	0.96	0.91
Selangor	2.07	18.3	0.92	18.1	0.88	0.97
Bernam	3.16	29.0	0.92	31.6	0.84	0.96
Jawa	3.89	19.2	0.93	19.0	1.09	1.00

Previous studies have shown that the adsorption of sulfonylurea herbicides is also pH dependent [7-11]. This is not surprising since metsulfuron-methyl is a weak acid with a  $pK_a$  value of ca. 3.3 and thus its speciation is pH dependent; this herbicide will dissociate above its  $pK_a$  value and tend to be present in the ionic form in neutral and alkaline soil solution. Figure 3 shows the influence of soil pH on the adsorption of metsulfuron-methyl. This figure clearly shows that soil with the lowest pH (Bernam) exhibited the highest adsorption capacity whilst soil with highest pH exhibited the lowest capacity to adsorb the herbicide. A correlation analysis between  $K_d$  and  $K_f$  with pH gives a strong negative correlation (-0.90 and -0.87, respectively) which indicated a strong inverse relationship between soil pH and adsorption capacity. This result is consistent with Abdullah *et al.* [11] and Walker *et al.* [8] who also observed a negative relationship ( $r^2 = -0.821$  and  $-0.795$ , respectively) between adsorption of metsulfuron-methyl and the pH of the soils they studied. Other researchers have found a similar negative relationship between other sulfonyl urea herbicides and soil pH [7-9, 15-18].

#### 4.0 Conclusion

Results obtained in the present clearly demonstrated the influences of soil organic matter content and soil pH on the adsorption of metsulfuron-methyl in Bernam, Selangor, Jawa and Tongkang soils series which are commonly found in oil palm plantations in Malaysia. Consistent with previously reported work, it was observed that soils with high organic matter content exhibited a high adsorption affinity for the herbicide whilst a high soil pH resulted in a low adsorption affinity for the herbicide.

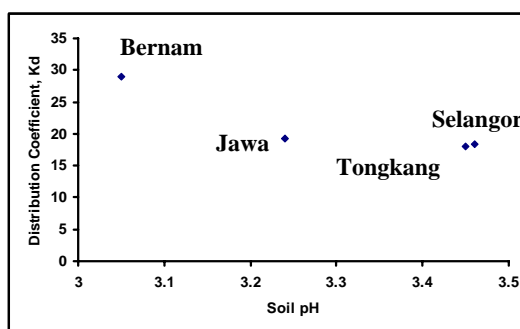


Figure 3 Influence of soil pH on adsorption of metsulfuron-methyl

## Acknowledgement

The financial support of the Department of Chemical Sciences of KUSTEM is gratefully acknowledged.

## References

- [1] Ye, Q., J. Sun and J. Wu. 2003. Causes of phytotoxicity of metsulfuron-methyl bound residues in soil. *Environmental Pollution* 126:417-423.
- [2] Li, Z-J., J-M. Xu, A. Muhammad and G-R. Ma. 2005. Effect of bound residues of metsulfuron-methyl in soil on rice growth. *Chemosphere* 58:1177-1183.
- [3] Boldt, T.S. and C. S. Jacobsen. 1998. Different toxic effects of the sulfonylurea herbicides metsulfuron-methyl, chlorsulfuron and thifensulfuron methyl on fluorescent pseudomonads isolated from an agricultural soil. *FEMS Microbiology Letters* 161(1):29-35.
- [4] Nicholls, P.H. and A.A. Evans. 1998. The behaviour of chlorsulfuron and metsulfuron in soils in relation to incidents of injury to sugar beet. *Proc. Brighton Crop Protec. Conf. Weeds* 549-556.
- [5] Kjaer, C., M. Strandberg and M. Erlandsen. 2006. Effects on hawthorn the year after simulated spray drift. *Chemosphere* 63(5):853-859.
- [6] Nicholls, P.H. 1988. Factors influencing entry of pesticides into soil water. *Pest. Sci.* 22:123-137.
- [7] Walker, A. and M. Jurado-Exposito. 1998. Adsorption of isoproturon, diuron and metsulfuron-methyl in two soils as high soil:solution ratios. *Weed Res.* 38:229-238.
- [8] Walker, A., Cotterill, E.G., and Welch, S.J. 1989. Adsorption and degradation of chlorsulfuron and metsulfuron-methyl in soils from different depths. *Weed Res.* 29:281-287.
- [9] Mohd Tahir, N., M. M. Ariffin, S. Suratman and P.P Lye. 2005. Adsorption and desorption of chlorimuron-ethyl on Setiu agricultural soils. *Malays. J. Anal. Sci.* 9(2):198-204.
- [10] Abdullah A. R., S. Sinnakhannu and N. M. Tahir. 2001. Adsorption, desorption and mobility of Metsulfuron-methyl in Malaysian agricultural soils. *Bull. Environ. Contam. Toxicol.* 66:762-769.
- [11] Abdullah A. R., S. Sinnakhannu and N. M. Tahir. 2001. Adsorption-desorption behaviour of Metsulfuron-methyl in selected Malaysian agricultural soils. *Fres. Environ. Bull.* 10(1):94-97.
- [12] Lim H. K. 1975. Working manual for soil analysis. Ministry of Agriculture Malaysia, Kuala Lumpur.
- [13] Giles, C. H., T. H. McEwans, S.N. Nakhwa and D. Smith. 1960. Studies in adsorption: Part XI. A system of classification of solution adsorption isotherms and its use on diagnosis of adsorption mechanism and in measurement of specific areas of soil. *J. Chem. Soc.* 3:3973-3993.
- [14] Mirsal, I.A. 2004. *Soil pollution: origin, monitoring and remediation*. Springer-Verlag Berlin Heidelberg, Germany. pp252
- [15] Borggaard, O.K. and J.C. Streibig. 1989. Chlorsulfuron adsorption by selected soils samples. *Acta. Agric. Scandinavia* 29:351-360.
- [16] Walker, A and S.L. Welch. 1989. The relative movement and persistence in soil of chlorsulfuron, metsulfuron-methyl and triasulfuron. *Weed Res.* 29: 375-383
- [17] James, T. K., P. Klaffenbach, P. T. Holland and A. Rahman. 1995. Degradation of primisulfuron-methyl and metsulfuron-methyl in soil. *Weed Res.* 35:113-120
- [18] Mohd Tahir, N., A.R. Abdullah and M. Baharom. 2001. Adsorption and mobility of chlorimuron in four selected agricultural soils. *Malays. J. Anal. Sci.* 6(1):105-111