

REDUCTION OF REFRACTION EFFECTS DUE TO INADEQUATE
SOUND VELOCITY PROFILE MEASUREMENTS IN
MULTIBEAM ECHOSOUNDER SYSTEMS

M.D.E.K. GUNATHILAKA

UNIVERSITI TEKNOLOGI MALAYSIA

REDUCTION OF REFRACTION EFFECTS DUE TO INADEQUATE
SOUND VELOCITY PROFILE MEASUREMENTS IN
MULTIBEAM ECHOSOUNDER SYSTEMS

M.D.E.K. GUNATHILAKA

A thesis submitted in fulfilment of the
requirement for the award of the degree of
Master of Science (Hydrography)

Faculty of Geoinformation Engineering and Sciences
Universiti Teknologi Malaysia

JULY 2008

DEDICATION

To my beloved parents and my loving Biyani ...

ACKNOWLEDGMENT

First of all, I would like express my sincere thanks to Professor Dr. Mohd Razali Mahmud for his assistance and support throughout my study at Universiti Teknologi Malaysia. This work would never be successful without his valuable advices, guidance and encouragements.

My gratefulness to the lectures and the staff of the faculty of the Geoinformation Science and Engineering in UTM, those who helped directly or indirectly during my studies. Especially to Mr. Bustami and Mr. Gazali for their logistic assistance during the data collection, and to the undergraduate students who helped in many ways in the data collection.

Special thanks to the Vice Chancellor of the Sabaragamuwa University of Sri Lanka, the Dean of the faculty of Geomatics, Heads of the departments of Surveying and Geodesy and the department of CPRSG and my fellow staff members at the University of Sabaragamuwa, for their full support on this study.

I also convey my gratitude to Dr. Othman, Mr. Joseph, Mr. Kelana and my colleagues of Hydrographic Research and Training Office (HRTTO), who have helped me in many ways, especially giving valuable suggestions regarding to this study. Last, but not least, I thank my family and my friends for their encouragement, love and moral support, provided during my study.

ABSTRACT

The single most important acoustical variable in the water is its speed. The average speed of sound in the ocean is about 1500 m/s, but its precise value in a location is strongly depends on temperature, pressure and salinity of that particular location. These factors change rapidly in time and space due to various reasons. In data acquisition, the collection of these denser sound speed data becomes critical. These inadequate sound speed measurements cause unknown propagation through the water column that adds a major uncertainty to the multibeam echosounder measurements (MBES). There are two types of sound speed measurements made in the flat array multibeam sonars. Surface Sound Speed (SSS) is measured at the face of the transducer and Sound Velocity Profile (SVP) is measured through the water column. SSS is used to determine the beam pointing angle (beam steering) and SVP is used to determine the depth and position (ray-tracing) of each beam. From these, the SSS is measured almost at each ping vies and SVP may be once or twice a day depending on the situation. When it comes to ray tracing, one has the options of using either the SSS or the surface value of SVP (SSVP). Some multibeam software manufacturers use the SSS in Snell's refraction constant determination while others use the surface value of the last performed SVP. In this study, both methods of refraction constant determination are evaluated. The results clearly showed that the use of SSS for Snell's refraction constant determination gives about 25% to 30% better results in multibeam bathymetry against refraction than the use of SSVP. A combined solution of SSS and SSVP provide a better, simpler and cost effective method of reduction of refraction effects in MBES. The results also demonstrated that the effects of inadequate sound speed measurements in each phase of bathymetric calculations would result in both depth and positional errors.

ABSTRAK

Salah satu pemboleh ubah akustik bagi air yang penting adalah kelajuan air. Purata kelajuan bunyi dalam laut adalah 1500 m/s, akan tetapi nilai kejituannya bagi sesuatu kawasan bergantung kepada suhu, tekanan dan ketumpatan bagi kawasan tersebut. Kesemua faktor ini berubah dengan cepat mengikut masa dan keluasan disebabkan oleh pelbagai punca. Pengumpulan data kelajuan bunyi yang banyak menjadi kritikal ketika kutipan data dilakukan. Pengukuran kelajuan bunyi yang kurang berupaya untuk menghasilkan perambatan yang tak diketahui melalui lapisan air telah menambahkan ketidakpastian kepada pengukuran pemerum gema berbilang alur (MBES). Terdapat dua jenis kelajuan bunyi yang dilakukan dalam susunan mendatar sonar berbilang alur. Kelajuan permukaan bunyi (SSS) adalah diukur pada paras muka tranduser manakala profil halaju bunyi (SVP) diukur melalui lapisan air. SSS digunakan untuk menentukan sudut arah alur dan SVP pula digunakan untuk menentukan kedalaman dan kedudukan setiap alur. Dari sini, SSS diukur pada hampir setiap ping dan SVP diukur sekali atau dua kali dalam satu hari bergantung pada keadaan. Apabila hendak mengesan sinar, kaedah yang boleh dilakukan adalah sama ada menggunakan SSS atau nilai permukaan bagi SVP (SSVP). Beberapa pengeluar perisian pemerum gema berbilang alur menggunakan lebih banyak SSS dalam penentuan angkatap biasan Snell, manakala pengeluar lain menggunakan nilai permukaan bagi SVP terakhir yang diperolehi. Dalam kajian ini, penilaian terhadap kedua-dua kaedah penentuan angkatap biasan dilakukan. Hasil kajian yang diperolehi jelas menunjukkan penggunaan lebih banyak SSS bagi penentuan angkatap biasan Snell memberi keputusan yang lebih baik bagi batimetri berbilang alur berbanding dengan penggunaan SSVP iaitu antara 25% ke 30%. Gabungan penyelesaian SSS dan SSVP menghasilkan kaedah lebih baik, mudah dan penjimatan untuk mengurangkan kesan pembiasan dalam MBES. Hasil kajian juga menerangkan tentang kesan kurang upaya bagi kelajuan bunyi dalam setiap fasa pengiraan MBES akan menyebabkan selisih kedalaman dan penentududukan.

TABLE OF CONTENTS

CHAPTER	TITLE	PAGE
	TITLE PAGE	i
	DECLARATION	ii
	DEDICATION	iii
	ACKNOWLEDGEMENTS	iv
	ABSTRACT	v
	ABSTRAK	vi
	TABLE OF CONTENTS	vii
	LIST OF TABLES	xii
	LIST OF FIGURES	xiii
	LIST OF SYMBOLS	xviii
	LIST OF ABBREVIATIONS	xx
	LIST OF APPENDICES	xxii
1	INTRODUCTION	1
	1.1 Background	1
	1.2 Research Problem	3
	1.3 Aim of the Research	6
	1.4 Research Objectives	7
	1.5 Research Scope	7
	1.6 Significance and Contributions of the Study	8
	1.7 Review of the Relevant Literature on Refraction Issue in MBES	9
	1.8 Summary	13

2	PRINCIPLE OF MULTIBEAM ECHOSOUNDING	14
2.1	Characteristics of the Acoustic Wave	14
2.2	Sound Wave in the Hydrographic Medium	15
2.2.1	Properties of Seawater Affecting Speed of Sound	15
2.2.1.1	Temperature	15
2.2.1.2	Salinity	16
2.2.1.3	Pressure	17
2.2.1.4	Density	17
2.2.2	Sound Speed Measurements in Water	18
2.2.3	Sound Speed Variability in the Ocean	18
2.2.3.1	Sound Speed Layers in the Oceans	19
2.3	Equation for Speed of Sound in the Water	22
2.4	Multibeam Echosounder Systems	27
2.4.1	Introduction	27
2.4.2	Principle of MBES Operation	28
2.4.3	Transducer	29
2.4.4	Transducer Arrays	30
2.4.4.1	Flat Array Transducers	31
2.4.4.2	Curved array Transducers	33
2.5	Beam Steering in MBES	34
2.6	Beam Steering in Flat Arrays	34
2.6.1	Mechanical Beam Steering	35
2.6.2	Electronic Beam Steering	35
2.6.2.1	Time Delay Method	37
2.6.2.2	Phase Delay Method	38
2.6.2.3	Fast Fourier Transformation Method	38
2.7	Beam Steering in Curved Arrays	39
2.8	Ray Tracing	41
2.8.1	Introduction	41
2.8.2	Vertical Incidence	42
2.8.3	Oblique Incidence	42
2.8.3.1	Layers with Constant Sound Speed	44
2.8.3.2	Layers with Constant Sound Speed Gradient	45

2.9 Sound Speed Measurements in MBES	48
2.9.1 Surface Sound Speed (SSS)	49
2.9.2 Sound Velocity Profile (SVP)	49
2.10 Errors in Multibeam Systems	50
2.10.1 Introduction	50
2.10.2 What are the Largest Errors?	51
2.10.3 Does our Sound Speed Measurements	
Adequate Enough?	51
2.10.4 Refraction in Multibeam Echosounders	52
2.10.4.1 Introduction	52
2.10.4.2 Effects during the Beam Steering	53
2.10.4.3 Effects Through the Water Column	54
2.11 Summary	55
 3 FIELD DATA COLLECTION	 56
3.1 Introduction	56
3.2 Survey Instrumentation	56
3.2.1 The MBES system	56
3.2.2 The Single Beam Echosounder (SBES)	57
3.2.3 The Positioning System	58
3.2.4 Sound Speed Measurements	59
3.2.4.1 SSS Measurements	59
3.2.4.2 SVP Measurements	60
3.2.5 Motion (Attitude) Sensor	61
3.2.6 Tide Gauge	61
3.3 Survey Software	62
3.4 Survey Platform	63
3.5 Field Data Collection	64
3.6 Methodology for Determination of Inadequate	
Sound Speed Measurements in MBES	65
3.6.1 The Effects of Inadequate SSS on MBES	65
3.6.1.1 Simulated Data Case for SSS	65
3.6.1.2 Real Data Case for SSS	66

3.6.2	Determination of Inadequate Sound Velocity	
	Profile (SVP) Effects on MBES	67
3.6.2.1	Simulated Data Case for SVP	68
3.6.2.2	Real Data Case for SVP	69
3.7	Comparison of SSS and SSVP in Determination of	
	Snell's Refraction Constant for Refraction Reduction	70
3.7.1	Data Collection for Refraction Reduction	70
3.7.2	Raw Data Extraction	71
3.7.2.1	MBES Data	71
3.7.2.2	Transducer Position Data	72
3.7.2.3	Vessel Attitude Data	73
3.7.2.4	SBES DTM Data	74
4	COMPUTER PROGRAM DEVELOPMENT	76
4.1	Introduction	76
4.2	The SSS Program	76
4.3	The Algorithm of the SSS Program	89
4.4	The SSVP Program	92
4.5	The Algorithm of the SSVP Program	92
5	DATA PROCESSING	94
5.1	Programme Validation	94
5.2	Data Processing	94
5.2.1	MBES Data Processing	94
5.2.2	SBES Data Processing	97
5.2.3	Final Comparison	99
6	RESULTS AND ANALYSIS	102
6.1	Introduction	102
6.2	Results of Program Validation	102
6.2.1	Northing Comparison	103
6.2.2	Easting Comparison	104
6.2.3	Depth Comparison	106

6.2.4 Summary of Program Validation	107
6.3 Inadequate SSS Effects on Flat Array MBES Transducers	108
6.3.1 Synthetic Data Results	108
6.3.2 Real Data Results	110
6.3.3 Summary of Inadequate SSS Effects on Flat Array MBES Transducers	111
6.4 Inadequate SVP Effects on Flat Array MBES Transducers	112
6.4.1 Synthetic Data Results	113
6.4.2 Real Data Results	114
6.4.3 Summary of Inadequate SVP Effects on Flat Array MBES Transducers	115
6.5 Refraction Reduction Results	116
6.5.1 Nadir Comparison	116
6.5.2 Outer Comparison	118
6.5.3 Summary of Refraction Reduction Results	120
7 CONCLUSION AND RECOMMENDATIONS	121
7.1 Conclusion	121
7.2 Recommendations	122
REFERENCES	124
Appendices A-E	128-145

CHAPTER 1

INRODUCTION

1.1 Background

One of the most impressive hydrographic survey technique developed during the past few decades is the Multibeam Echosounder System (MBES). It is a rapid and more automated depth measurement system, guaranteeing the full bottom coverage. Therefore it has become the number one choice for most of the hydrographic surveys. Multibeam sonars uses sound as a remote sensing tool. The fundamental data collected by these sonars are the two way travel time of the short acoustic pulse travelling between the transducer and the bottom surface and the direction from which the echo is reflected. A typical MBES (eg. RESON Seabat 8124) has some 80 separate beams, spanning 120 degrees are sounded across the ship's track on each acoustic ping, which will normally covers an area of 3.5 times of the depth.

Use of MBES for accuracy-critical applications has now become wide spread with the improvement in acoustic transducer design and digital data processing. Now MBES have become a cost effective, reliable tool and being increasingly employed in ocean mapping, dredging operations, route surveys and various other underwater engineering works (Dinn *et al.*, 1995). Along with the adoption of the MBES as the instrument of choice of the most hydrographic applications, has come the challenge of minimising any associated errors (Cartwright and Clarke, 2002).

Final sounding data from the MBES system is a result of processing information from several data sources. These include the ship's heading and attitude data from the gyrocompass and the motion sensor; vertical reference data from the tide gauge; positional data from the Global Positioning System (GPS) unit and sound velocity data from the Conductivity Temperature Density (CTD) or Sound Velocity Profile (SVP) probe in addition to the basic MBES data itself. Data from each source is subject to individual errors contributing to overall data quality. To limit these, system planners often have established error budgets for various components of the system.

The International Hydrographic Organization (IHO) recommends accuracy limits for the type of hydrographic surveys and the depth of water in which a survey is conducted. These accuracies are divided in to two categories, horizontal accuracy and depth accuracy. Horizontal accuracy refers to the horizontal positioning accuracy of each sonar beam and depth accuracy includes amongst other things like tidal measurement errors, data processing errors and measurement system and sound velocity errors (Batton, 2004).

Thanks to the intensive researches carried over the last decade, system manufactures have introduced equipments advertised to achieve positional uncertainties of 2 cm or better (Real Time kinematics GPS), tidal measurement uncertainties less than 2 cm (Real Time Tide) and vessel altitude uncertainties of 0.02 degrees. The uncertainties of these instruments contribute to the surveys are within or if not better, than the accuracy suggested by the IHO (Batton, 2004). Therefore with the advent of the new technologies, the last remaining obstacles to absolute precision are sound speed variance and roll biases (William and Capell, 1999).

This chapter outlines the core areas of this study including research problem statement, aim and objectives, research scope, significance of the study as well as the discussion of related previous works. Chapter 2 provide a detailed theoretical overview of the marine acoustical environment, sound wave propagation, MBES system and need of sound speed in MBES. The next chapter (Chapter 3) discusses the field data collection. The computer program development part is explained in Chapter 4. Here the algorithms used and the flowcharts of each program are discussed in detail. In Chapter 5, data processing techniques are presented. The results and data analysis are discussed in Chapter 6 and finally, Chapter 7 concludes the results obtained and the recommendations for the future studies also presented.

1.2 Research Problem

The nature of the sea environment is the most fundamental factor, which separates land and sea surveying. The sea is fluid and dynamic. It is coronial and full of living organisms that changes the structure. The characteristics of the medium through which measurements are made are always subjected to variation (Ingham and Abbott, 1992). These variations must be understood and corrections to be applied in order to achieve precise results.

When it comes to acoustic depth measurements in the oceans, the dominant character is speed of sound. The speed of sound in the oceans is subjected to significance changes caused by rapid changes in temperature, pressure and salinity over a short period of time. These changes are more prominent in continental shelf regions; as a result of rapid heating and cooling of the water surface due to solar heating, interactions with fresh waters carried by rivers, tidal and current mixing and so on (William and Capell, 1999).

Measuring these physical properties that control the speed of sound in the ocean (using CTD probe) or direct sound speed measurements (using SVP probe) is the standard procedure for collecting the sound speed information. These physical oceanographic variables have clearly demonstrated temporal and spatial scale variation during common hydrographic surveys that are usually extending from days to weeks and survey lines from kilometers to tens of kilometers. As a result, in most hydrographic operations one must take discrete measurements of sound speeds at periods of more than once a day; bringing a survey vessel to a halt, lowering a sensor several hundred meters and then taking care of all the data quality assurance and data transfer protocols necessary. This would commonly involve at least 30 minutes of ship time.

Because of this, agencies are reluctant to take more frequent observations and thereby implicitly assumed that the space and time variability of the ocean could adequately be described using these sparse observations. Even more, now the swath of the multibeam sonars have moved to ever wider angular sectors in order to achieve even wider coverage, as the other sources of uncertainties have been gradually eliminated, which means they are more sensitive to refraction (Clarke et al. 2000). When applying these SVPs, there are two principal limitations exists:

- a) The water mass really does change over time scales much shorter than the standard sampling period.
- b) The application of SVP is almost universally done based on the prior observations only.

This inadequate sound speed measurements cause an unknown propagation (refraction errors) that adds a major source of uncertainty to depth measurements, resulting artifacts can create short-wavelength topographic features that may be misinterpreted as sea floor relief (Gardner, *et al.*, 2001) as shown in Figures 1.1 and 1.2.

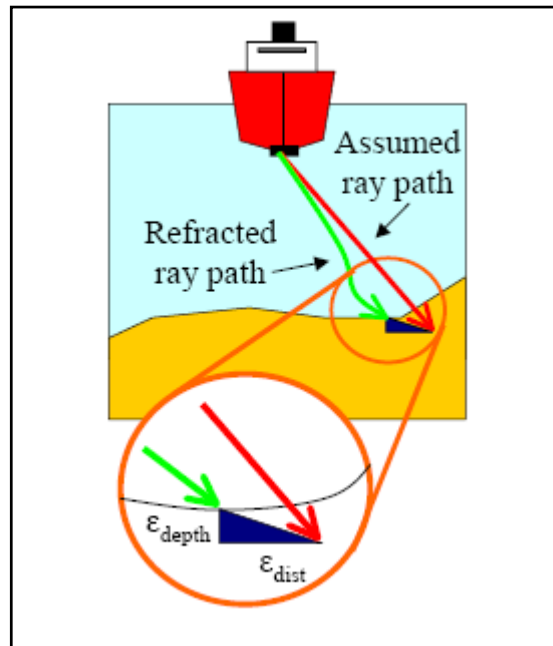


Figure 1.1 Illustration of how refraction degrade the accuracy of MBES data (OMG-UNB, Canada)

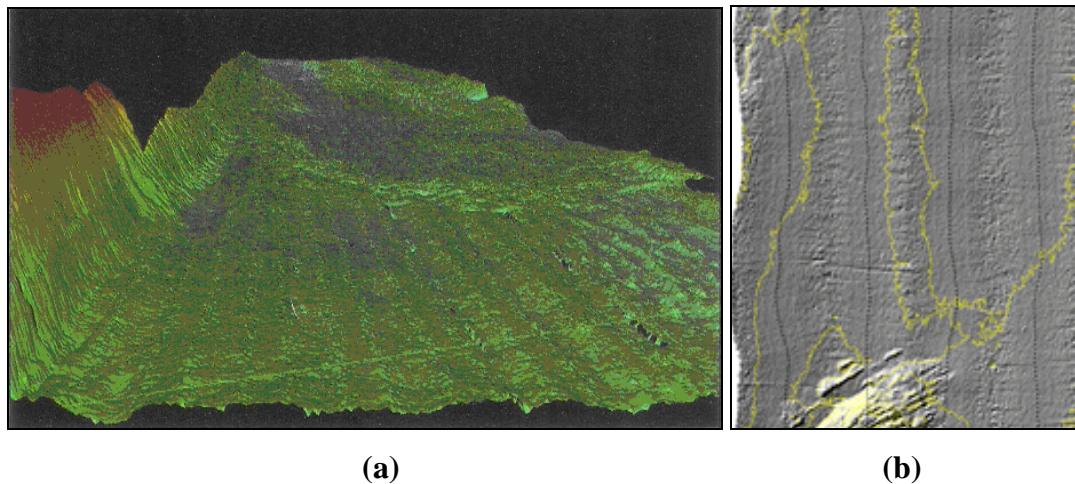


Figure 1.2 Observe the Parallel ridges and valleys due to sound speed errors (a) Exhibits an artificial wave-like pattern in DTM (Jeroen, 2007) (b) Exhibits how contours are altered by these artificial features (OMG-UNB)

Almost all of the flat array MBES (eg. RESON SeaBat 8124) measures two types of sound speed measurements. The surface sound speed (SSS) measured using the probe near the sonar head is used for beam steering purpose and the sound

velocity profile (SVP) measured through the water column used for depth and position calculation of each beam (ray tracing). The SSS is measured continuously through out the survey period, while the SVP is only measured in discrete of times. Therefore the dominant uncertainty remaining to be solved is caused by the fact that we have an imperfect knowledge of the water column and accompanying changes in sound speed with depth (Cartwright and Clarke, 2002).

In this case, to address this imperfect knowledge on SVP, some multibeam system manufacturers use more frequent (real-time) SSS measurements, measured at the sonar head along with spares SVP in ray tracing. Here, they use SSS in refraction (Snell's) constant determination for each beam, measured almost at each ping vies (about >10Hz). While other manufacturers use SSS in beam steering purpose only and the SVP is used alone in ray tracing (here they use the surface value of the SVP for refraction constant determination). This seems that, still there is no agreement in the hydrographic community, which one gives better results against refraction.

1.3 Aim of the Research

The aim of this research is to evaluate, the most appropriate value in the determination of refraction coefficient for the ray tracing purpose to perform the refraction calculations. That is, either the surface sound speed (SSS) or the surface value of the sound velocity profile (SSVP) giving the best results in ray tracing.

1.4 Research Objectives

The objectives of this research are;

- 1) To study the effects caused by inadequate sound speed measurements in each phase of the multibeam echosounder system. The effects from:
 - a) The surface sound speed.
 - b) The sound speed through the water column.
- 2) To develop two computer programmes for MBES bathymetric calculations using SSS and SSVP as refraction constant.
- 3) To perform a comparative test between the above two approaches to identify any significance difference between the two methods of refraction constant determination.

1.5 Research Scope

Unlike in the open oceans, where the sound velocity profile has a predictable and stable shape, in coastal and shallower areas, (continental shelf regions) the SVPs are irregular and unpredictable. Therefore, for this study the fieldwork is carried out in shallow coastal waters in Lido beach, Johor Bahru, Malaysia. In addition to that, the effects are simulated for a 100m deep synthetic flat seabed for each case.

Over the years various types of multibeam echosounder system configurations have been designed and developed for various purposes. Curved array, flat array, dual flat array are some of them. Each individual system behaves differently in refraction. This study is limited to the Mill's cross type, flat array multibeam configuration. RESON SeaBat 8124 is a typical system of that kind.

The SSS is measured using the surface sound speed-measuring probe located at the face of the transducer and SVP-15 probe is used to measure the sound velocity profile through the water column.

QINSy version 7.5 software was used to collect, extract raw data and process the multibeam data. AutoCAD R14 and QuickSurf 5.1 software are used in visualization of bathymetric data and Digital Terrain Model (DTM) generation.

MATLAB- R2006a is used to develop the computer programmes. Here the ray tracing is performed assuming that each sound speed layer has a constant sound speed. The bathymetric calculation procedures used in the developed programs are the same as the QINSy software procedures, except the refraction constant determination method. The bathymetric results from the QINSy software are used to validate the results from the developed programs.

Nadir beams are least affected by refraction, therefore in this study the nadir beams were used for benchmarking or as reference depths (true depths) in comparison of refraction effects. SBES data is also used for this purpose.

Corresponding profiles from SSS and SSVP DTMs, SBES lines and adjacent MBES nadir area are compared to each other in the final comparative test to determine the significance between the two approaches.

1.6 Significance and Contributions of the Study

Since MBES is a recent development, very few researches have been carried out in the issue of refraction. For Malaysia, MBES is even newer. There is hardly any proper study carried out in Malaysian waters of this kind.

This study will completely address how the variation of the sound speed affects in multibeam echosounder bathymetric measurements, both in beam forming and in ray path calculations. This is very much important in equatorial waters where the sound speeds are more critical due to solar heating, tidal and current mixing.

This knowledge will be very much useful to the survey planners to make extra measures to overcome the effects caused and hence improve the efficiency and accuracy of the works.

Finally, this will give more insight to MBES system and software developers to come up with advanced systems and software that will suffer less effects from sound speed variation (refraction) in future.

1.7 Review of Relevant Literature on Refraction Issue in MBES

Over the years hydrographers and oceanographers have faced greater challenges when they dealt with oceanic parameters, especially when they began to use the acoustic techniques. Because of this, many researchers have done much research and experiments on these matters. Some tried to understand how this really affect the measurements, while other researchers tried to come up with a solution for it. These solutions can be discussed in two phases. The first one is in post processing content like applying ray tracing techniques, while the next approach is addressing the roots (in data collection stage) of the problem; that is to collect the near continuous sound speed profiles.

Badiey *et al.* (2002) try to understand the correlation between the oceanographic features and the high-frequency acoustic wave propagation. Their results clearly showed a direct relationship between salinity and temperature changes with acoustic wave propagation in shallow waters. Furthermore, the hydrodynamic parameters such as surface waves, tides and current can influence amplitude and travel time of signal transmissions.

Gardner *et al.* (2001) have highlighted that the refraction is the single biggest limitation on the quality of bathymetric data, and strong water stratification causes problems for the beam steering and ray tracing in MBES. They suggested measuring sound speed profiles more frequently to minimize these effects.

But measuring highly variable and dynamic oceanographic components is not that easy. Clarke (2002) illustrated how fast water masses changes in oceans, in time and space, using observed sound speed cross-sections. He also stated that when beams become less vertical, the affects get worse. As a result one could see parallel ridges in MBES data, along the ship-track direction where neighbouring lines get overlapped.

Tonchia and Bisquay (1996) and Dinn *et al.* (1995) have shown that the inadequate sound speed measurements effects in two phases in MBES. That is, the surface sound speed affects the beam forming and the sound velocity profile affects the ray path. Beam forming depend on the transducer configurations (flat-level, flat-tiled, circular-faced), and they mathematically illustrate the effects in each transducer configuration. Furthermore, they have shown that when the vessels roll is significant, the roll modulate the depth errors contributed by sound speed uncertainty. Finally, they suggested measuring the surface sound speed continually and to use adaptive modeling of the error regime coupled with deliberately introduced redundancy in the depth data in an effort to enable interpolation between temporally and spatially sparse SVPs.

Kammerer *et al.* (1998) faced the same problem while they try to monitor the temporal changes in seabed morphology, using multibeam sonars in Saguenay River in France. The local mixing of fresh and salt water has introduced more uncertainties than they first expected, due to the refraction. They dealt with this by separating the different lines corresponding to the different sound velocity profiles (SVP) taken during the survey and distinguished them geographically within each of these sets, assuming that the water masses are affected differently and requiring different refraction coefficients. Then, they applied estimated refraction corrections to each of these groups of lines; hence reduce the curvature of the swath.

Batton (2004) found out that the sound velocity formula used to compute the speed of sound in the water column is also a source of uncertainty related to the horizontal position of the chart depths. She measured the temperature, conductivity and pressure in North Atlantic Ocean and used Chen and Millero, Meckenzie and Medwin formulae for the estimation of sound speed. Then, she performed ray tracing to compute the horizontal distances of refraction for the beams through the water column. Through this, she concluded that the sound velocity formula used to compute the sound speed also contribute to uncertainties associated with outer swath of MBES.

William *et al.* (1999) described a method to determine the magnitude of the SVP errors using the MBES data itself, by running cross lines. These crossing swaths are obtained from the check lines used in most hydrographic surveys. Here, in addition to refraction errors they observed the roll bias and tidal differences also.

Beaudoin *et al.* (2004) demonstrated that it is possible to correct soundings corrupted by incorrect surface sound speed in post-processing. During their multibeam survey in Amundsen Gulf, Canada; their surface sound speed probe has failed in several occasions. This caused a greater uncertainty in their measurements. Then they interpolated SSS from the measured SVP's and recalculated the beam steering angles. Through this they were able to improve the accuracy of the data.

Furlong *et al.* (1997) had come up with a solution to measure oceanographic parameters in real-time using a computer-controlled winch and a davit. The winch deploys a 'free-fall' fish that can be instrumented with a sound velocity sensor (like CTD). They named this as "Moving Vessel Profiler" (MVP). The initial system was capable of profiling down to 100 meters even at the vessel speeds up to 12 knots and the entire procedure from the launch to recovery take about 4 minutes. This technique improved the accuracy of the MBES data and do not interrupt the survey process as it operates while the vessel is underway.

Clarke *et al.* (2000) and Clarke and Parrott (2001) had used the above technique (MVP) to study the sound speed variability of the oceans and with the use of MVP along with MBES, frequent water column information allowed a much better control of sounding errors due to the spatial and temporal variations in the water column; making the wider swath (160°) MBES more reliable.

Cartwright and Clarke (2002) also faced serious problems with refraction when they carried out a survey in Fraser River delta, Canada. This River deltaic area was considered being an extreme refraction environment with strong sound speed anomaly. Even with the MVP, it was not possible to collect those large number of spatially dense sound velocity profiles. There they recalculated the departure angles and ray tracing using the spatially interpolated SVPs in order to increase the accuracy of the data in post processing.

Kammerer and Clarke (2000) presented another method of removing refraction effects in MBES using the MBES data itself. They tried to develop a systematic analysis and correction software package for multibeam in post-processing context. The methodology consists of the estimation of the variation in the water sound speed distribution by using the information given by the MBES dataset. This was done by the evaluation of appropriate modeled SVPs, which was added to an already existing SVP or applied directly to the raw data. Here they considered two methods, the first one was using two neighboring parallel lines and the second method was cross-line method. In both cases they assumed that the nadir beams are unaffected by refraction.

Beaudoin *et al.* (2004) developed a sound speed decision support system for multibeam sonar operations in the Canadian Arctic. This helps hydrographers make better decisions by integrating the various types of information relating to sound speed into a single software application.

REFERENCE

- Badiey, W., Wong, K. and Lenain, L. (2002). High Frequency Acoustic Propagation in the Presence of Oceanographic Variability. *Proceeding NATO Scalant Undersea Research Center*. Roma.
- Batton, D. (2004). The Effect of Refraction on Oblique Angles of Multibeam Echosounder Due to Sound Speed Changes Through the Water Column. *The Hydrographic Journal*, July 2004:15-20.
- Beaudoin, J., Clarke, J. E. H. and Bartlett, J. (2004). *A Sound Speed Decision Support System for Multibeam Sonar Operation in the Canadian Arctic*. University of New Brunswick, Department of Geodesy and Geomatics Engineering.
Online: www.omg.unb.ca/omg/papers/beaudoin_ASM2004_poster.pdf
Visited: November, 2006.
- Beaudoin, J., Clarke, J. E. H. and Bartlett, J. (2004). Raytracing (And Re-raytracing) Amundsen's Journey Through the Northwest Passage. *Proceedings of the Canadian Hydrographic Conference 2004*, Ottawa.
- Burdic, W. S. (1991). *Underwater Acoustic System Analysis*. 2nd ed. New Jersey: Prentice Hall.
- Cartwright, D. S. and Clarke, J. E. H. (2002). Multibeam Survey on the Fraser River Delta, Coping with Extreme Refraction Environment. *Proceedings of Canadian Hydrographic Conference, 2002*.
- Cartwright, D. S. (2003). *Multibeam Bathymetric Surveys in the Fraser River Delta, Managing Severe Acoustic Refraction Issues*. University of New Brunswick: M.Eng. Report.
- Caruthers, J. W. (1977). *Fundamentals of Marine Acoustics*. Amsterdam, Netherlands: Elsdvier scientific publishing Company
- Charls W. Brennen, (2002). *Multibeam Lecture Series*. Reson Inc. September, 2002
- Clarke, J. E. H., Lamplugh, M. and Kammerer, E. (2000). Intergration of Near-Continuous Sound Speed Profile Information. *Canadian Hydrographic Conference, 2000*. Montreal.
- Clarke, J. E. H. and Parrott, R. (2001). Integration of Dense, Time-Varying Water Column Information with High-Resolution Swath Bathymetric Data. *U.S. Hydrographic Conference, 2001*, Norfolk VA.

- Clarke, J. E. H. (2002). Visualization of Seafloor: Mapping Submarine Landscapes. *Symposium on Visualization and Looking Beyond Earth*. American Association of Advancement of Sciences.
Online: www.omg.unb.ca/AAAS/UNB_Seafloor_Mapping.html
Visited: October, 2006.
- Coates, R. F. W. (1990). *Underwater Acoustic Systems*. London: Macmillan Education LTD.
- Coppens, A. B. (1981). Simple equation for the speed of sound in Neptunian waters. *The Journal of the Acoustical Society of America*. 69(3): 862-863.
- Dera, J. (1991). *Marine Physics*. Amsterdam; New York; Elsevier; Warszawa: PWN-Polish Scientific Publishers.
- Dinn, D. F., Loncarevic, B. D. and Costello, G. (1995). The Effect of Sound Velocity Errors on Multi-beam Sonar Depth Accuracy. *Challenges of Our Changing Global Environment, IEEE Ocean'95 Conference Proceedings*. 2: 1001-1010.
- Etter, P. C. (2003). *Underwater Acoustic Modeling and Simulation*. 3rd ed. London: Spon Press
- Furlong, A., Beanlands, B. and Chin-Yee, M. (1997). *Moving Vessel Profiler (MVP) Real Time Near Vertical Data Profiles at 12 Knots*. IEEE Xplore, 1997.
- Gardner, J. V., Mayer, A. L., Clarke, J. E. H., Dartnell, P. and Sulak, K. (2001). *The Bathymetry and Acoustic Backscatter of the Mid Shelf to Upper Slope Off Panama City, Florida, Northeastern Gulf of Mexico*. CURISE Report.
- Horne, R. A. (1969). *Marine Chemistry: the structure of water and the chemistry of the hydrosphere*. New York: Wiley Interscience.
- Huibert J.L., Robert V. D.V., Tim Haycock, Pieter Jansen, Rein de Vries, Paul V. W. and Cor Beemster, (2006). *Handbook of Offshore Survey-Acquisition and Processing*. London: Clarkson Research Services Ltd.
- Ingham, A. E. and Abbott, V. J. (1992). *Hydrography for Surveyor and Engineer*. 3rd ed. New Jersey: Blackwell Science.
- International Hydrographic Organization (2008). *IHO standards for hydrographic Surveys, 5th ed*. Monaco. Special Publication No.44.
- International Hydrographic Organization (2005). *Manual on Hydrography*. 1st ed. Monaco: International Hydrographic Bureau.
- Jacops, M. (2002). *Analysis of High Resolution Bathymetric Data in the Eltanin Impact Area*. Delft University of Technology, Germany: Masters Thesis.

- James V.G., Larry A.M., Clarke J.E.H., Peter D. and Kenneth J.S., (2001). *The Bathymetry and Acoustic Backscatter of the mid shelf to upper slope of Panama City, Mexico*. CRUISE Report, USGS. M1-01-GM September 2001
- Jeroen Van D.A. (2007). Improving MBES measurements. *Hydro International*. Vol 11 November 02: 27-29
- Jong, C. D., Lachapelle, G., Skone, S. and Elema, I. A. (2002). *Hydrography*. 1st ed. BM Delft, The Netherlands: Vereniging voor Studie- en Studentenbelangen te Delft.
- Kammerer, E., Clarke, J. E. H., Doucet, L. N. and Godin, A. (1998). Monitoring Temporal Changes in Seabed Morphology and Composition Using Multibeam Sonars: a Case Study of the 1996 Saguenay River Floods. *Proceedings of the Canadian Hydrographic Conference 1998*. Victoria, Canada: 450-461.
- Kammerer, E. and Clarke, J. E. H. (2000). New Method of Removal of Refraction Artifacts in Multibeam Echosounder Systems. *Canadian Hydrographic Conference 2000*. Montreal.
- Mackenzie, K. V. (1981). Nine -term equation for sound speed in the oceans. *The Journal of the Acoustical Society of America*. 70(3): 807-8112.
- National Physics Laboratory (2000). *Technical Guidelines-Speed of Sound in Sea Water*. National Physical Laboratory, Middlesex, UK: Technical Report.
- Navitronic System AS. (1998). *SVP-14/15 Operator's Manual*, Revision 1.00. Navitronic Systems Association, Denmark.
- Odom Hydrographic Systems Inc. (2005). *Hydrotrack Installation/Operation Manual*, Version 2.22. ODOM Hydrographic Systems Incorporation, Louisiana, USA.
- OMG. (2005). *Y2005 Research Status Report*. Chair, Ocean Mapping Group, UNB, Canada. Online: www.omg.unb.ca/omg/papers/Chair_Report_2005.pdf
Visited: December 2006.
- OMG-UNB. *Lecture Notes*. Ocean Mapping Group- University of New Brunswick, Canada.
- QPS BV. (2004). *Drivers and Interfacing Manual QINSy Version 7.x*. Quality Positioning System BV, The Netherlands.
- RESON Inc. (2005). *RESON Training CD for Universiti Teknologi Malaysia*, RESON Incorporation, The Netherlands.
- RESON Inc. (2003). *SeaBat 8124 Operator's Manual*. Version 4, RESON Incorporation, California, USA.

- Rodney, F. W. (1990). *Underwater Acoustics Systems*. London: Macmillan Education LTD.
- Schmidt, V., Chayes, D. and Caress, D. (2006). *MB-System Cookbook*. Online, www.mbari.org/data/mbsystem/mb-cookbook/. Visited: December, 2007.
- Simrad AS. (2003). *MB Stave Display - Instruction Manual*. Base Version. Kongsburg Simrad Association, Horten, Norway.
- Tonchia, H. and Bisquay, H. (1996). The Effect of Sound Velocity on Wide Swath Multibeam System Data. *IEEE Oceans'96 "Prospects for the 21st Century" Conference Proceedings*. 2: 969-974.
- Trimble Navigation Ltd (2002). *DSM 21/212 Receiver User Guide*, Version 1.73, Trimble Navigation Limited, California, USA.
- Tucker, D.G. (1966). *Underwater observation using sonar*. London: Fishing News (Books)
- Urick, R. J. (1983). *Principles of Underwater Sound*. 3rd ed. Los Altos, Calif: Peninsula Publishing
- USACE (2004). *Engineering Design and Hydrographic Survey*. Engineering Manual EM1110-2-1003. U.S. Army Corps of Engineers, Washington DC, USA.
- Valeport Ltd (2004). *Valeport 740 Tide Gauge user's Manual*. Valeport Limited, Devon, UK
- VT TSS Ltd (2003). *MAHRS Surface Product System Manual*. Issue 1.1, VT TSS Limited, Herts, UK
- William, J. and Capell, Sr. (1999). Determination of Sound Velocity Profile Errors Using Multibeam Data. *IEEE Oceans' 99 "Riding the Crest into the 21st Century" Conference Proceedings*. 3: 1144-1148.